



LUTON TOWN FOOTBALL AND ATHLETIC CO. LTD.

OFFICIAL
JOURNAL

PRICE 2d



League—Division II

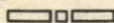
December 10th, 1938.

LUTON TOWN v. CHESTERFIELD

“TRUE-FORM”
THE FINEST FOOTWEAR
IN THE TOWN



BUY DIRECT FROM THE MAKERS



LOCAL BRANCH:

32, GEORGE STREET

Head Office and Factories: NORTHAMPTON

Insist upon the
Building Materials for
your new house coming from

POWDRILL'S

BUILDERS' MERCHANTS
COAL and COKE MERCHANTS
BRICK MANUFACTURERS
SAND & GRAVEL QUARRY OWNERS

GEORGE POWDRILL & SON LTD., 1, 3 & 5, HITCHIN ROAD, LUTON
TELEPHONE 2073 (2 Lines)

HELEY'S CAFE

MILL STREET

NEXT TO PALACE THEATRE, LUTON

DINNERS

11.30 — 2.30

TEAS

3.30 — 6

SUPPERS

6 — 12

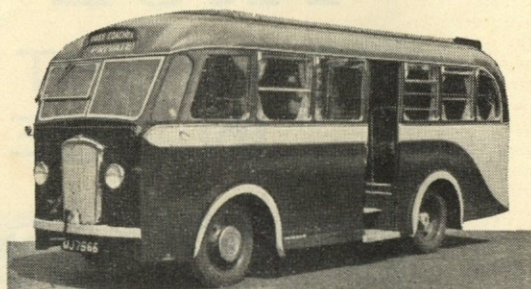
SPECIAL

FOOTBALL TEAS

FISH AND CHIPS
SAUSAGE AND MASH

— ETC. —

PROPRIETOR: A. S. HELEY



COOPERS COSY COACHES

F. J. COOPER LTD.

20, 26 and 30 Seater
Coaches for private hire,
also stream lined 7 Seater
Car for weddings and
long distances

OXEN ROAD GARAGE

'Phone LUTON 731

LUTON
FOOTBALL AND



TOWN
ATHLETIC CO.

Telephone No. 3151-2.

LIMITED.

President: Alderman Harry Arnold, C.A., J.P.

Vice-President: The Right Honourable E. Leslie Burgin, M.P., P.C., D.L.I.,
(His Majesty's Minister of Transport).

Directors:

Chairman: Chas. Jeyes, Esq., C.C.

E. Hugh Woods, Esq. (Vice-Chairman), Frank J. Andrews, Esq., Councillor Horace S. Hewson,
Percival G. Mitchell, Esq., Henry Richardson, Esq., C.C., Philip W. Wright, Esq.

Team Manager: Mr. Neil McBain.

Secretary: Mr. A. E. Wickson.

Honorary Medical Officer: E. J. Crarer, Esq., M.B., Ch.B.

Honorary Solicitors: Messrs Machin & Co., 17-19, George Street West, Luton.

CLUB NOTES by "Hatter"

QUITE a number of supporters made the journey to Fulham, and I am quite sure took with them fear and trepidation as to what the result would be. Far from being overwhelmed our boys only lost by the odd goal in three, and even "fear and trepidation" were loud in their praises and amongst the vociferators who claim the "Cottagers" were most fortunate to win. The game the boys put up amply convinced those supporters, who had been told of the team's prowess on foreign soil, but who had not previously seen them away from home, that we have players on our books who can compete with the next, and only slight adjustments are needed to make them into a team which can be compared with any. The biggest mistake the forwards made was to keep the ball too close when near goal, their approach work was magnificent, and in this they were most ably supported by Fred Roberts and Jock Finlayson. They failed, however, to accept their opportunities, otherwise we should have had a commanding lead at the interval which would have denied defeat. The inclusion of Tom King undoubtedly stiffened the defence, and he gave Arnold little or no scope, whilst Tom Dunsmore equally obliterated his wing. All three goals came from corner kicks, a strange feature these days and whilst that of Bill Redfern's was quite a clear cut case, those obtained by Fulham were real scrambles, and not a few thought that on each occasion Joe Coen was impeded and a free kick should have been awarded to Luton. Anyhow, I think the match has given that confidence desired to the supporters who undertook the journey, and we shall hear less complaints in the future than previously.

The "Stiffs" continued their winning ways at the expense of Bristol City, but the visitors fought valiantly, and infinitely superior to that expected from their position in the Combination table. I have no doubt that the heavy going suited them for they had a great physical advantage over us. Pride

of honours must go to young Doug Gardiner. I thought he was the best player on the field, for the ball appeared as a magnet to him and without exception he used it to advantage. The need of Ron Stevens for first team duty brought in Tony Carroll at outside right with young Bill Burgess on the extreme left. Both did quite well and further outings will be to their advantage.

The "A" team obtained the right to meet Biggleswade and District in the next round of the United Counties' Knock Out Cup Competition by defeating Wellingborough Town, at Wellingborough, by three goals to one. A further trial was given to J. C. Botterill, the Northampton Park player, and he had the satisfaction of being amongst the goal scorers, whilst another youngster to be given a run out was young Denis Stokes of Luton Spartan.

Today we entertain Chesterfield who will arrive full of confidence following their six goals to one victory over Southampton, last week end. Again it is about time we broke our sequence of non-successes at home and I am sure we are all hoping this is the case today. The "Stiffs" visit Swansea where we hope they will be successful, whilst owing to Bedford Town having to replay a Cup match the "A" team are without a game this week end.

If Chesterfield, who last week scored six,
Today get up to any such tricks,
Or get even a point,
There'll be many round this 'joint'
Who'll be like a lot of cats on hot bricks.

Before we transferred Joe Payne,
"Give it to Joe" was the usual refrain,
We'll have to change the tune
To "Give it to Jack" soon,
Now Vinall's amongst the goals again.

ATTENDANCE BAROMETER

1937		1938		1937				1938				
				£		s.	d.	£		s.	d.	
Aug. 28	Aug. 27	Brighton & Hove Reserves	7346	167	0	3	6356	144	15	3
		Southend United Reserves								
	Aug. 31	Newcastle United					17689	811	11	4
Sept. 1		Aston Villa	25349	1299	14	4				
	Sept. 3	Norwich City					16547	747	0	6
Sept. 4		Manchester United	20610	994	1	2				
	Sept. 7	Tottenham Hotspur Reserves					5955	131	1	7
Sept. 8		Clapton Orient Reserves	4823	93	6	7				
	Sept. 10	Watford Reserves					7256	163	5	10
Sept. 11		Chelsea Reserves	7725	175	7	7				
	Sept. 17	Southend Reserves					5826	126	10	7
Sept. 18		Tottenham Hotspur	23788	1235	7	8				
Sept. 22		Leicester City Reserves	3626	69	19	2				
	Sept. 24	Sheffield United					17436	808	7	6
Sept. 25		Queens Park Rangers Reserves	6558	142	1	11				
	Oct. 1	Chelsea Reserves					7831	182	7	4
Oct. 2		Bury	17650	821	19	0				
	Oct. 5	Leicester City Reserves					1300	33	14	8
	Oct. 8	Tottenham Hotspur					21061	1067	7	8
Oct. 9		Brighton and Hove Reserves	5236	107	4	10				
	Oct. 15	Bradford					14955	684	3	8
Oct. 16		Swansea Town Reserves	6592	141	16	2				
	Oct. 22	Brentford Reserves					6698	151	14	7
Oct. 23		West Ham United	17757	897	18	10				
	Oct. 29	Blackburn Rovers					16819	782	12	4
Oct. 30		Reading Reserves	5571	116	1	10				
	Nov. 5	Clapton Orient Reserves					5744	129	16	4
Nov. 5		Blackburn Rovers	16776	818	16	6				
	Nov. 12	West Ham United					18331	910	7	10
Nov. 13		Millwall Reserves	6929	149	18	5				
	Nov. 19	West Ham United Reserves					6208	137	11	9
Nov. 20		Chesterfield	17088	802	11	10				
	Nov. 26	Sheffield Wednesday					15936	744	9	0
Nov. 27		Arsenal Reserves	7116	158	2	0				
	Dec. 3	Bristol City Reserves					5264	112	13	4
Dec. 3		Fulham	13529	653	13	6				
					204069	8795	1	7	197212	7869	19	1

N.B. The attendance figures for both League II and London Combination matches, include the number of Season Tickets issued. The gate receipts are the net amounts received after Entertainment Tax has been deducted.

ALBUMS

At the request of a number of supporters we have had prepared an Album to contain the Art Plates of our Football Personalities, which we present with this programme at League II matches.

Will any supporters who desire one of these Albums please place their orders at the office, 70-72, Kenilworth Road, Luton. Price 1/6 each.

DO NOT MISS OBTAINING A COPY OF THE PROGRAMME ON

SATURDAY, DECEMBER 24th.
It will contain a full sized autographed Art Plate of Tom King.

Back numbers of previous programmes including Art Plates, can be obtained on application to the Editor, 70-72, Kenilworth Road, Luton. Price 2d.

PURCHASE A PROGRAMME AND HELP THE FOOTBALL CLUB.

Next Match, Saturday, December 17th, 1938.

LONDON COMBINATION

LUTON TOWN RES. v. CRYSTAL PALACE RES.

Kick-Off 2.30 p.m.

ADMISSION—Centre Stand 1/6

Stand and Enclosure 1/- Ladies and Boys 6d. : Ground 6d. Boys 3d.

(ALL PRICES INCLUDE ENTERTAINMENT TAX)

LUTON TOWN FOOTBALL AND ATHLETIC Co., Ltd.

OFFICIAL JOURNAL

"A" TEAM FIXTURES

UNITED COUNTIES LEAGUE

Season 1938-9

Matches will be played at Ford End Road, Bedford

		F. A.	
Sat., Aug. 27	Wellingborough	...	A 3 1
Sat., Sept. 3	Stewart and Lloyds	...	H 0 0
Sat., " 17	Wisbech	...	A 2 2
Mon., " 26	Rushden	...	A 1 1
Sat., Oct. 8	Spalding	...	H 4 1
Sat., " 22	Biggleswade (Beds. Invit. Cup)	...	A 4 1
Sat., " 29	All Blacks (Friendly)	...	H 10 2
Sat., Nov. 5	Bedford	...	A 2 1
Sat., " 19	Biggleswade	...	A 4 1
Sat., " 26	St. Neots	...	H 4 0
Sat., Dec. 3	Wellingborough (U.C. Cup)	...	A 3 1
Sat., " 24	Rushden	...	H
Mon., " 26	St. Neots	...	A
Sat., " 31	Stewart and Lloyds	...	A
Sat., Jan. 7	Biggleswade	...	H
Sat., " 21	Desborough	...	A
Sat., " 28	Biggleswade (U.C. Cup)	...	A
Sat., Feb. 4	Kettering	...	A
Sat., " 11	Stamford	...	H
Sat., " 18	Wisbech	...	H
Wed., Mar. 1	West Ham "A" (Friendly)	...	H
Sat., " 4	Bedford	...	H
Sat., " 18	Wellingborough	...	H
Sat., April 1	Kettering	...	H
Fri., " 7	Stamford	...	A
Sat., " 8	Spalding	...	A
Mon., " 10	Luton League (Friendly)	...	H
Sat., " 15	Desborough	...	H
Sat., " 29	Northfleet United (Friendly)	...	H
Sat., May 6	Northfleet United (Friendly)	...	A

When we've finished with our hissing
And we've let off all our steam,
When we fail to spit a sixpence from our mouth,
Will you kindly drop a shilling
In the Bobbers' tambourine
To meet the overdraft when in Third Division South.

When we've done with shouting "Bah!"
And we've sung, "Lor', what a team!"
When we've finished with our "Blimey" and "Lor'
rotten!"

Will you kindly drop a shilling
(For string) in the Bobbers' tambourine
So they can strangle any blighters we've forgotten.

Then for Chiltern and poor old Crusader
They can hire a soup tureen,
That is, if they're not entitled to the dole.
But, in any case drop a shilling
In the Bobbers' tambourine
For you know you can't cook soup without the coal!

There is a Scottish back named Dunsmore,
Who clubs offered considerable sums for
But Luton stepped in
Produced the tin
And now they could transfer him for tons more.

H.B.

PLAYER'S APPEARANCES

	League II		London Comb. Utd. Counties League		F.A. Cup		Other Matches		Total	
	App.	Goals	App.	Goals	App.	Goals	App.	Goals	App.	Goals
Billington, H. J. R.	5	5	15	14			1	1	21	20
Burgess, W. W.			7	1					7	1
Campbell, R.			7	1			1		14	1
Carroll, J.	1		2		3	2	3		9	2
Carte, R.	2		6		3		4		15	
Clark, C.	7	3	6	4	4	2			17	9
Coen J. L.	7		14				1		22	
Connelly, E.	16	6					1		17	6
Dolman, H. W.	10				3		3		16	
Dreyer, G.			12	1			2		14	1
Dunsmore, T. H.	15						1		16	
Ferguson, C.	9	1	1		3	3	3	2	16	6
Finlayson, J.	17						1		18	
Gager, H. E.			20	5	1		1		22	5
Gardiner, D.			5		5		3	1	13	1
Goodyear, G.					3		2		5	
Hogg, F.			7		4	1	5	5	16	7
Kidd, G. I.			6				1		7	
King, T. P.	1		13		1				15	
Laing, J. F.			6	2	5	1	2		13	3
Lewis, J.			18				1		19	
Loughran, J.	16		1				1		18	
Lutterloch, B. R.			21				2		23	
Mayberry, S.			7		5		1		13	
Nelson, J. H.	17						1		18	
Redfern, W. J.	8	3	14	11			1	2	23	16
Roberts, F.	12		5	3			1	1	18	4
Smith, T. S.	16						2		18	
Stephenson, G. H.	15	4	1	1			1		17	5
Stevens, R. F.	1		18	9	1		1		21	9
Strathie, J.			1		7	1	4		12	1
Vinall, E. J.	12	5	5	6			1	1	18	12
Wale, J.			10		4		3		17	
Amateurs and Others	1		2		30	6	11	9	43	16

ARE YOU one of the many people seeking a modern house within reasonable distance of the centre of the Town, and large works, on excellent bus route to all parts yet possessing good garden and unrestricted view of open country, and above all at a low inclusive rental?

IF SO, we can offer you a house with all these advantages, and containing 3 good bedrooms, bathroom, 2 family size reception rooms and easy-work kitchen at a weekly rental of 16/9 inclusive.

SELL & MITCHELL

Auctioneers, Land & Estate Agents

7 & 9, PRINCESS STREET, LUTON

'PHONE 2003/4

95, HIGH STREET NORTH, DUNSTABLE

'PHONE 354



A Point to remember!
E. A. ALLEN
the Printer of this Programme

WILL GIVE SERVICE AND SATISFACTION
424, DUNSTABLE ROAD
LUTON
Telephone 1626

To-Day's Half-Time Scores

FIRST LIST

A	BIRMINGHAM	v.	BRENTFORD
B	BOLTON WAN.	v.	ASTON VILLA
C	CHARLTON A.	v.	WOLVES
D	CHELSEA	v.	HUDDERSFIELD
E	LEEDS UNITED	v.	SUNDERLAND
F	LEICESTER C.	v.	DERBY CO'NTY
G	LIVERPOOL	v.	GRIMSBY T.
H	MANCH. UN.	v.	ARSENAL
K	MIDDLESBRO'	v.	BLACKPOOL
L	PRESTON N. E.	v.	EVERTON
M	STOKE CITY	v.	PORTSMOUTH
N	BURNLEY	v.	MANCH. CITY

NOTE—The Letter in the Programme corresponds with the letter on the Board—thus A 0—1 means that the first-named Club has scored 0 and their opponents 1.



Specialities

Paint and Enamel
Manufacturers

"Stuart" Series
Wallpapers

OGDEN & CLEAVER

Stuart Street, LUTON

TELEPHONE 580

LUTON GAS COMPANY

JUST A TURN OF THE TAP
AND GAS GIVES INSTANT
HOT WATER, REAL FIRE-
SIDE COMFORT, CAREFREE
COOKING

Be up-to-date with Gas

Showrooms—GEORGE STREET
and DUNSTABLE ROAD

THE BEST DEFENCE

against

WINTER'S ATTACK

'OXAVIN'
TONIC WINE

Large Bottle 4/6

Medium Bottle 2/6

L. GREENER, Wine Merchant

60, WELLINGTON STREET, LUTON

(Corner of Stuart Street)

H. R. WILLIAMS

REGISTERED
ELECTRICAL CONTRACTOR

and Member of the
Electrical Contractors' Association

17, DURHAM ROAD
LUTON

'PHONE: LUTON 2012

NEWBERRY

& CO. (LUTON) LIMITED

32/36, CROMWELL ROAD
LUTON

Builders' Merchants

Ironmongers

Door and Gate Importers

PHONE 294

PRIVATE 511

PHONE 223

EST. 1860

WHITE'S

again supply

LUTON TOWN
FOOTBALL CLUB

WITH THEIR

FOOTBALL
BOOTS

THEY know the Best

H. WHITE (LUTON) LTD.

FOOTWEAR

of every description

MANCHESTER STREET

LUTON

To-Day's Half-Time Scores

SECOND LIST

A	COVENTRY C.	v.	FULHAM
B	NEWCASTLE	v.	BURY
C	NORWICH C.	v.	TRANMERE R.
D	NOTTS. FOR.	v.	WEDNESDAY
E	PLYMOUTH	v.	SWANSEA T.
F	SHEFFIELD UN.	v.	BRADFORD
G	SOUTHAMPTON	v.	BLACKBURN
H	TOTTENHAM	v.	MILLWALL A.
K	WEST BROM.	v.	WEST HAM U.
L	EXETER CITY	v.	NORTHAMPT'N
M	READING	v.	BRISTOL CITY
N	BARNLEY	v.	GATESHEAD

S.J. HAWKINS
STATION WORKS. FLITWICK BEDS.

'PHONE: FLITWICK 253

PNEUMATIC TYRED
TRUCKS, TROLLEYS AND
BARROWS

for all trades

WHOLESALE AND RETAIL

Send for List L101 Post Free

CYCLES & REPAIRS

Get your new machine from

S. A. LEWIS

138, DUNSTABLE ROAD

LUTON

PHONE 807

Terms from

2/-
Weekly

All kinds of
repairs executed
by experienced
workmen

men like gifts
from a mans shop

Charles
MARES
LIMITED

TAILORS - HATTERS - HOSIERS

George Street
LUTON

TELE.
6 2 5

TODAY

**PALACE
THEATRE**
LUTON

TODAY

GARY COOPER BASIL RATHBONE
— IN —

**"THE ADVENTURES
OF MARCO POLO"**

(U)

Football, Rugby,
Hockey, Badminton,
Table Tennis,
Miniature Billiard
Tables, Dominoes
and all Indoor Games

DART BOARDS and
DARTS a Speciality

Roller Skates and Boots
in Great Variety

G. A. WILD
AND SONS

Sports Outfitters

14, Manchester Street, Luton
103, High Street N., Dunstable

BOOK AT
BAILEY'S

FOR
LONDON COASTAL COACHES
ALL INDEPENDENT SERVICES
JERSEY AIRWAYS
LONDON THEATRES
AND
AMUSEMENTS

Daily Services to all
parts of Great Britain

TOBACCONIST
AND BOOKING AGENT

38, NEW BEDFORD ROAD
LUTON

Phone 1972

LUTON TOWN

Shirts White
Knickers Black
Stockings Black with White Tops

1
Coen
Goal

2
King
Right Back

4
Finlayson
Right Half

7
Clark
Outside Right

8
Redfern
Inside Right

Referee—

G. W. JONES
(Nottingham)

12
Bonass
Outside Left

13
Mackie
Inside Left

17
Weightman
Left Half

20
Kidd
Left Back

CHESTERFIELD

Shirts Blue and White Vertical Stripes
Knickers Blue
Stockings Blue and White Hoops

22
Middleton
Goal

FIRST PRIZE won by
J.W. GREEN'S
BITTER BEER

other awards for

OATMEAL STOUT and LUTONIAN STOUT

AT BREWERS' EXHIBITION, LONDON

November, 1938

J. W. GREEN LIMITED, The Brewery, LUTON

Telephone - Luton 3131

League—Division II

3
Dunsmore
Left Back

6
Roberts
Left Half

10
Connelly
Inside Left

11
Stephenson
Outside Left

Linesmen—

Blue Flag: W. RILEY (Birmingham)
Red Flag: F. T. BARTON (Ealing)

15
Lyon
Inside Right

16
Hughes
Outside Right

19
McMillen
Right Half

21
Milburn
Right Back

Kick-Off 2.30 p.m.

L-M-S
RAILWAY

DECEMBER 26th, 1938
(BOXING DAY)

NOTTS FOREST
v.
LUTON TOWN

Depart Luton 11.5 a.m.

Return from Nottingham 6.30 p.m.

RETURN FARE 5/9

MODERN
FIREPLACES

HEATING
APPLIANCES

Up-to-date Sanitary Fittings
in White and Colours

For ARTISTIC WALLPAPERS

**CHARLES
BIRD & SONS LTD.**
COLLINGTON STREET
LUTON

Telephone: Luton 1255/1256

For QUALITY PAINTS

"Triplex" Safety Glass
Motor Screens (Fitted)

Makers of

MIRRORS—SPLASH BACKS—GLASS
SHELVES & GLASS FIRE SCREENS

HARRY CANHAM

Cardboard Box

Packing Case, Ply Box and

Crate Manufacturer

9a, MARKET HILL, LUTON

TELEPHONE 458

WAKE UP YOUR LIVER BILE

*without Calomel—and you'll jump out of bed in
the morning full of vim and vigour*

YOUR LIVER should pour out
two pints of liquid bile into
your system daily. If this bile is
not flowing freely, your food
doesn't digest. It just decays
inside you. Gas bloats up your
stomach. You get constipated.
Your whole system is poisoned
and you feel sour, sunk, and the
world looks punk.

Laxatives help a little, but a
mere bowel movement doesn't

get at the cause. It takes those
good old Carters Brand Little
Liver Pills to get these two pints
of bile flowing freely and make
you feel "up and up." Harmless,
gentle, yet amazing in making
bile flow freely. Ask
for Carters Brand Little
Liver Pills.

Stubbornly refuse any-
thing else. 1/3 and 3/- at
all chemists.

NOW ALSO IN
PENNYWORTHS
EVERYWHERE

There can be no
"PENALTY AREA"

for you if you are
BUYING YOUR OWN HOUSE

It is a Safe Investment

Write for our attractive terms:

**LUTON & MIDLANDS
BUILDING SOCIETY**

Telephone: Luton 1067

11, George St.
West
LUTON

WEBDALE'S
of WELLINGTON STREET

— FOR —

KITCHEN EQUIPMENT

AND ALL

HOUSEHOLD REQUIREMENTS

AT LOWEST PRICES

21 to 27, WELLINGTON STREET
Phone 41 LUTON

Charnley and Sons REGISTERED OPTICIANS

NATIONAL HEALTH
INSURANCE

On the Official List of
H.S.A. OPTICIANS

11, Wellington Street
LUTON
Telephone 1808

Over 50 years in the
Printing Trade
in Luton
○○○○○

W. F. BUNKER

WILL HELP YOU IN
THE PRODUCTION
OF YOUR PRINTING
REQUIREMENTS

26a, CHAPEL STREET
LUTON
PHONE 224

E. A. GREEN

BOOKSELLER
NEWSAGENT
STATIONER

Luton's Most Progressive
Circulating Library

21a, New Bedford Road
and 228, Biscot Road
LUTON
Telephone 476

F. WHITE

BUILDER
and
CONTRACTOR
141,
Stockingstone Road
LUTON

ALL CLASSES OF
REPAIRS, PAINTING
AND DECORATING
UNDERTAKEN

Estimates Free

To-Day's Half-Time Scores

THIRD LIST

F.A. CUP—SECOND ROUND

A	BRISTOL ROV.	v.	BOURNEM'UTH
B	CARDIFF C.	v.	CREWE ALEX.
C	CHESTER	v.	HULL CITY
D	FOLKESTONE	v.	YEOVIL
E	HALIFAX T.	v.	MANSFIELD T.
F	HARTLEPOOLS	v.	QUEEN'S PARK
G	IPSWICH T.	v.	TORQUAY U.
H	PORT VALE	v.	SOUTHEND U.
K	SCUNTHORPE	v.	WATFORD
L	SOUTHPORT	v.	SWINDON T.
M	STOCKPORT C.	v.	WALTH'STOW
N	WALSALL	v.	CLAPTON O'

W. CHAMBERLAIN & Co.

Proprietors—
A. M. Chamberlain
R. Deadman

106, Dunstable Road
LUTON

Best British Made
Brushes and Brooms
Enamel Ware

City of London
White Lead Paint

Messrs Merrediths & Co.
Merlac Enamel Paints

Fadeless Wall Paper
Ask for Pattern Books

—□—
A TRIAL SOLICITED

W. HOLES

3, Gordon Street, Luton
Coal and
Coke Merchant

Authorized Agent for
Luton Gas Company's
large and graded coke

Agent for
L.M.S. Passenger Dept.

Telephone 210



TELEPHONE:
LUTON 2126

P. W. SMITH

Builder — Contractor
High Class Decorator

418, DUNSTABLE ROAD
LUTON



LUTON BOBBERS STAND CLUB

President: P. W. Wright, Esq.

Vice-Chairman: E. G. Gibbs, Esq.

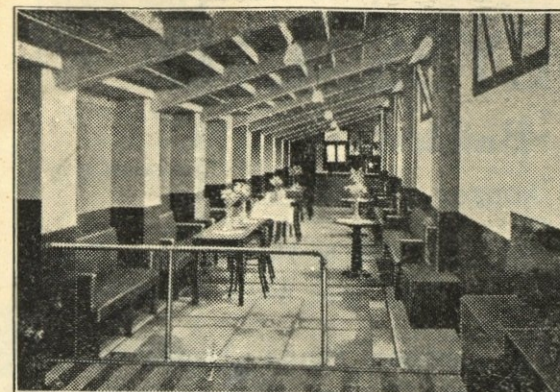
Hon. Secretary: Mr. A. C. Wright

Hon. Treasurer: Mr. J. Collier

Committee:

Messrs W. Banks, F. Cooper, A. Flitton,
N. Lines, S. Setchell, R. G. Smith

TELEPHONE 2566



Today, December 10th, will be an important one for the Bobbers Stand Club—why? The Secretary has received a letter from the Rt. Hon. E. Leslie Burgin, M.P., P.C., D.L.I., notifying him of his intention to pay the Bobbers Stand Club a visit after the Chesterfield match, also a desire to become a Life Member of the Club. Now, Bobbers rally round after the match and give him a warm welcome.

The Committee have placed a contract for a New Tea Bar to be erected in the New Stand, so that prompt service can be given for teas etc.

Don't forget to buy your Christmas Draw Tickets at one penny each—every ticket purchased goes to help the New Stand Fund.

The enthusiasm between the top half of the Skittles League Table still continues to be very keen, our team have again found their winning form, on

Tuesday last they paid a visit to the Tudor "B" Club and won an interesting game by 44 to 33, may they still continue on the winning path. In next week's issue we shall publish the League Table up to date, so that you can see what the Bobbers are doing.

What a night these Thursday nights are! Why? Come along and join the Club and see for yourselves.

We offer a very hearty invitation to all non-members to join the Club. The subscription is 1/2 per year, that is all.

Or if you would rather prefer to be a Life Member we shall be pleased to enrol you on payment of £1/1/-

Some interesting items will appear weekly in this space.

THE CENTRAL RESTAURANT

20/22/24, CHEAPSIDE
LUTON
○○○

SEATING FOR 300 ESTABLISHED 60 YEARS

Phone 172 and book a table
and have your meal in comfort

WE CAN CATER FOR YOU
ANYWHERE
ANY TIME
ANY NUMBER

A. E. NICHOLLS

Wholesale
CONFECTIONER & TOBACCONIST

CAN SUPPLY YOU WITH
EVERYTHING YOU WANT
FOR THE TOBACCO AND
CONFECTIONERY TRADE
AT LOWEST PRICES



Prompt Delivery and Civility

16, MILL STREET, LUTON

'Phone: Luton 902

CHARLES JEYES LTD.

The Luton Builders

have the following houses TO LET

3 Bedroom House—Black Swan Lane
Rent 16/6 per week inclusive

Superior Villa in Humberstone Road
Rent 19/- per week exclusive

3 Bedroom House—Cavendish Road
Rent 16/- per week exclusive

3 Bedroom House—Napier Road
Rent 14/- per week exclusive

3 Bedroom House—Beechwood Road
Rent 15/- per week exclusive

Apply

17a, WINDSOR STREET, LUTON

TELEPHONE 594

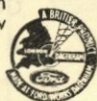
Another cut IN YOUR TRANSPORT COSTS

FORDSON 10 CWT. VAN
NOW £165

FORDSON 5 CWT. VAN
NOW £112'10


Renowned alike for smartness, speed and economy, the Fordson 5 cwt. and 10 cwt. vans, at the new price, offer exceptional value.

Fordson 
FOR XMAS DELIVERIES ON TIME
Come in and see them at



FATHER CHRISTMAS ARRIVES



IN A  Ford "Eight"

... it's his gift to the family—and a wise choice, too. The roomiest and best equipped car in its class, it has the finest all-round performance. The Ford "Eight," costing £115 at works, can be secured for only **£25 DOWN**, taxed and insured ready for the road.

FOR THE FORD OWNER . . .

A genuine Ford Accessory makes an ideal gift. There is a wide range available. See them in our showroom.

LUTON MOTOR Co., Ltd.

SOLE WHOLESALE FORD DISTRIBUTORS FOR THIS DISTRICT

BEECH HILL, DUNSTABLE ROAD, LUTON - 'Phone 15

Football League Division II — RESULTS AT A GLANCE

	Blackburn R.	Bradford	Burnley	Bury	Chesterfield	Coventry City	Fulham	Luton Town	Manch. City	Millwall	Newcastle U.	Norwich City	Notts Forest	Plymouth A.	Sheffield U.	Sheffield W.	Southampton	Swansea T.	Tottenham H.	Tranmere R.	West Brom.	West Ham U.
Blackburn Rovers	H	4 0	2 3	2 0	0 2	1 1	3 3	1 4	3 0	6 0	3 1	1 2	0 3	4 0	3 1	3 2	3 1
Bradford	A	0 4	2 2	1 0	1 3	0 4	2 2	4 2	1 3	0 1	3 1	1 2	2 2	3 1	3 1	2 1	1 1	2 2	3 0	0 2	2 1
Burnley	H	3 2	0 1	2 3	1 1	0 0	3 2	1 1	2 3	0 4	2 1	0 1	2 1	1 1	2 2	3 1	0 3	0 1
Bury	H	A	1 0	+	3 1	0 0	0 2	2 5	0 0	2 1	2 2	0 2	5 2	3 3	0 3	3 3	1 1
Chesterfield	H	0 2	3 2	1 3	+	0 2	0 2	0 3	1 3	1 3	1 0	1 1	3 1	6 1	1 1	2 2	1 0	0 1	1 0
Coventry City	H	2 0	1 1	0 0	2 0	+	1 0	0 3	2 1	1 0	0 3	0 0	2 2	3 0	4 2	1 2	1 3	1 4
Fulham	H	A	0 0	0 2	2 0	+	2 1	5 3	2 1	1 2	3 3	2 2	0 0	1 1	1 1	0 1	1 0	3 0
LUTON TOWN	H	1 1	2 2	2 3	5 2	0 1	1 2	+	2 1	2 1	2 1	1 4	2 0	1 5	3 2	0 0	3 2	0 3	1 2
Manchester City	H	3 3	2 4	3 0	3 0	3 5	1 2	+	1 6	4 1	4 3	0 0	3 2	1 3	2 1	5 0	2 0	1 3	2 4
Millwall	H	4 1	3 1	1 1	0 0	3 1	1 2	6 1	2 2	2 0	5 0	3 0	1 2	0 1	1 1	0 2	1 5
Newcastle United	H	A	3 2	0 1	2 1	1 2	2 2	+	4 0	2 1	0 0	2 0	1 0	3 0	0 1	5 1	5 1	1 1
Norwich City	H	0 6	1 3	4 0	3 1	3 3	1 2	0 2	+	0 1	2 1	0 4	0 7	2 1	3 0	1 4	2 3	0 2
Notts Forest	H	1 3	2 1	1 2	1 2	3 0	2 2	3 4	0 5	0 4	1 0	+	0 3	0 2	2 2	1 2	2 1	1 1	0 0
Plymouth Argyle	H	A	2 2	1 0	0 1	0 0	4 1	0 0	0 3	1 2	1 2	3 0	+	1 0	2 1	1 2	3 1	2 1	1 2
Sheffield United	H	2 1	2 2	1 1	0 0	0 2	2 3	2 1	0 0	4 0	2 0	0 1	+	0 0	2 1	2 2	2 0	4 3	3 1
Sheffield Wednesday	H	3 0	1 3	1 3	2 2	5 1	3 1	0 2	7 0	1 2	0 0	+	3 4	1 1	3 3	2 0	1 5	3 2
Southampton	H	A	1 2	1 2	2 5	0 3	1 1	1 2	1 0	0 1	1 2	2 2	2 1	4 3	+	4 1	1 2	3 1	2 1
Swansea Town	H	0 4	1 1	1 1	3 3	1 1	2 4	1 1	0 5	1 1	0 3	2 1	1 2	1 1	1 4	+	1 1	2 5
Tottenham Hotspur	H	A	1 3	2 2	2 1	1 0	0 0	0 2	1 0	4 1	1 2	2 2	3 3	2 1	1 1	+	2 0	3 4	2 1
Tranmere Rovers	H	A	3 0	0 1	0 1	2 3	2 0	1 5	1 1	1 3	0 2	0 2	1 3	0 2	+	3 1	1 6
West Bromwich A.	H	2 0	3 0	3 3	1 0	3 1	3 0	3 1	5 1	1 5	3 2	1 2	3 4	5 1	1 2	4 3	1 3
West Ham United	H	1 3	1 0	1 0	0 1	4 1	2 3	2 1	4 2	1 1	2 0	0 0	2 1	1 3	2 3	5 2	1 2	6 1	+

FIXTURES, 1938 - 9

FIRST XI Division II

					F.	A.
Sat., Aug. 27	West Bromwich Albion	A	0	3
Wed., " 31	Newcastle United	...	4 1	H	2	1
Sat., Sept. 3	Norwich City	...	1 1	H	2	1
Mon., " 5	Coventry City	...	1 2	A	0	1
Sat., " 10	Manchester City	A	2	1
Sat., " 17	Plymouth Argyle	...	4 2	A	1	4
Sat., " 24	Sheffield United	...	2 3	H	2	0
Sat., Oct. 1	Burnley	...	2 3	A	2	3
Sat., " 8	Tottenham Hotspur	...	2 4	H	0	0
Sat., " 15	Bradford	...	4 2	H	2	2
Sat., " 22	Swansea Town	...	1 1	A	3	2
Sat., " 29	Blackburn Rovers	...	4 1	H	1	1
Sat., Nov. 5	Tranmere Rovers	A	3	2
Sat., " 12	West Ham United	...	2 2	H	1	2
Sat., " 19	Bury	...	4 3	A	5	2
Sat., " 26	Sheffield Wednesday	...	2 2	H	1	5
Sat., Dec. 3	Fulham	...	1 4	A	1	2
Sat., " 10	Chesterfield	...	1 1	H
Sat., " 17	Millwall	A
Sat., " 24	West Bromwich Albion	H
Mon., " 26	Nottingham Forest	...	0 1	A
Tues., " 27	Nottingham Forest	...	2 2	H
Sat., " 31	Norwich City	...	4 0	A
Sat., Jan. 7	Manchester City	H
Sat., " 14	Plymouth Argyle	...	1 1	H
Sat., " 21	Sheffield United	...	0 2	A
Sat., Feb. 4	Burnley	...	3 1	H
Sat., " 11	Tottenham Hotspur	...	0 3	A
Sat., " 18	Bradford	...	1 1	A
Sat., " 25	Swansea Town	...	5 1	H
Sat., Mar. 4	Blackburn Rovers	...	2 2	A
Sat., " 11	Tranmere Rovers	H
Sat., " 18	West Ham United	...	0 0	A
Sat., " 25	Bury	...	0 1	H
Sat., April 1	Sheffield Wednesday	...	0 4	A
Fri., " 7	Southampton	...	1 3	H
Sat., " 8	Fulham	...	4 0	H
Mon., " 10	Southampton	...	6 3	A
Sat., " 15	Chesterfield	...	2 5	A
Sat., " 22	Millwall	H
Sat., " 29	Newcastle United	...	3 1	A
Sat., May 6	Coventry City	...	1 4	H

RESERVE FIXTURES London Combination F. A.

Sat., Aug. 27	Brighton & Hove A.	...	6 2	H	2	1
Mon., " 29	Millwall	...	0 3	A	5	1
Sat., Sept. 3	Bournemouth	...	1 1	A	3	1
Wed., " 7	Tottenham Hotspur	...	0 2	H	1	1
Sat., " 10	Watford	...	2 0	H	1	2
Sat., " 17	Southend United	...	3 1	H	4	0
Mon., " 19	Tottenham Hotspur	...	3 5	A	2	2
Sat., " 24	Queens Park Rangers	...	0 4	A	0	1
Wed., " 28	Southampton	...	2 0	A	2	2
Sat., Oct. 1	Chelsea	...	1 1	H	2	1
Wed., " 5	Leicester City	...	0 1	H	6	1
Sat., " 8	Charlton Athletic	...	0 4	A	3	2
Mon., " 10	Leicester City	...	1 4	A	5	0
Sat., " 15	Fulham	...	1 5	A	1	3
Sat., " 22	Brentford	...	0 0	H	3	2
Sat., " 29	Arsenal	...	0 1	A	2	4
Sat., Nov. 5	Clapton Orient	...	3 0	H	5	0
Sat., " 12	Portsmouth	...	0 0	A	2	2
Sat., " 19	West Ham	...	0 1	H	2	1
Sat., " 26	Northampton Town	...	1 1	A	4	1
Sat., Dec. 3	Bristol City	...	3 1	H	3	1
Sat., " 10	Swansea Town	...	1 0	A
Sat., " 17	Crystal Palace	...	6 1	H
Sat., " 24	Brighton & Hove A.	...	1 1	A
Sat., " 26	Southampton	...	2 1	H
Sat., " 31	Bournemouth	...	2 1	H
Sat., Jan. 7	Reading	...	3 1	H
Sat., " 14	Watford	...	2 3	A
Sat., " 21	Southend United	...	0 4	A
Sat., " 28	Queens Park Rangers	...	2 2	H
Sat., Feb. 4	Chelsea	...	2 6	A
Sat., " 11	Charlton Athletic	...	2 0	H
Sat., " 18	Fulham	...	3 0	H
Sat., " 25	Brentford	...	0 3	A
Sat., Mar. 4	Arsenal	...	1 2	H
Sat., " 11	Clapton Orient	...	7 0	A
Sat., " 18	Portsmouth	...	1 2	H
Sat., " 25	West Ham	...	1 1	A
Sat., April 1	Northampton Town	...	3 3	H
Fri., " 7	Coventry City	...	0 1	A
Sat., " 8	Bristol City	...	2 3	A
Mon., " 10	Coventry City	...	4 0	H
Sat., " 15	Swansea Town	...	1 1	H
Sat., " 22	Crystal Palace	...	3 1	A
Sat., " 29	Millwall	...	5 1	H
Sat., May 6	Reading	...	4 1	A

LEAGUE TABLES

LEAGUE DIVISION II

	Pld.	Won	Lost	Drn.	For	Agst.	P.
Fulham	18	9	3	6	32	19	24
West Brom. A.	18	11	6	1	47	33	23
Blackburn Rovers	18	10	6	2	41	26	22
Sheffield United	17	8	3	6	28	18	22
Newcastle United	18	9	6	3	32	25	21
Tottenham Hotspur	17	7	4	6	29	25	20
Coventry City	17	8	5	4	24	22	20
West Ham United	18	8	7	3	36	27	19
Millwall	17	7	6	4	34	22	18
Sheffield Wednesday	17	7	6	2	38	29	18
Manchester City	17	8	7	2	40	37	18
Plymouth Argyle	17	7	7	3	23	21	17
Chesterfield	17	7	7	3	25	25	17
Bradford	17	6	6	5	28	31	17
LUTON TOWN	17	7	7	3	28	32	17
Burnley	18	6	7	5	24	28	17
Bury	17	5	6	6	24	29	16
Southampton	17	6	9	2	27	35	14
Notts Forest	17	4	9	4	20	34	12
Norwich City	17	5	11	1	22	42	11
Swansea Town	17	1	8	8	20	41	10
Tranmere Rovers	17	3	13	1	18	39	7

LONDON COMBINATION

	Pld.	Won	Lost	Drn.	For	Agst.	P.
Arsenal	21	15	4	2	77	29	32
LUTON TOWN	21	13	4	4	58	29	30
Chelsea	19	13	5	1	45	26	27
Tottenham Hotspur	20	11	6	3	51	26	25
Queens Park Rangers	19	10	5	5	48	23	24
Brighton & Hove A.	19	11	6	2	34	32	24
West Ham United	19	10	6	3	53	36	23
Brentford	20	9	6	5	52	37	23
Watford	20	10	7	3	31	37	23
Coventry City	18	11	7	0	53	26	22
Portsmouth	20	8	7	5	47	39	21
Bournemouth	21	7	7	7	40	49	21
Southend United	17	8	5	4	31	25	20
Fulham	20	8	8	4	32	40	20
Swansea Town	22	8	10	4	27	46	20
Crystal Palace	20	7	9	4	42	39	18
Charlton Athletic	20	6	9	5	29	31	17
Leicester City	21	7	12	2	38	56	16
Millwall	20	6	10	4	28	45	16
Bristol City	22	7	15	0	31	60	14
Southampton	20	5	12	3	33	46	13
Reading	19	4	11	4	37	69	12
Northampton	19	4	13	2	19	45	10
Clapton O.	21	2	16	3	17	72	7

Edward Martell

& Co., Ltd.

TELEPHONE

896-7

Coal and Coke Merchants

ESTABLISHED

1879

24, UPPER GEORGE STREET, LUTON

Burn "Hucknall" Ashless Coal

It Scores Every Time!!

Popular Price! Saves Labour!! Great Heat!!!

WHY NOT TRY IT?

CARRY ON

LUTON TOWN!

a packet of

ROSEMARY

TOBACCO

is always enjoyable

W. & F. FAULKNER

LONDON

BRANCH OF THE IMPERIAL TOBACCO CO.
(OF GREAT BRITAIN AND IRELAND), LIMITED

SEE that you "SEE"

all of the game

comfortably,

if you cannot do so

CALL AND SEE

A. G. PRATT

M.P.S., F.S.M.C.

CHEMIST AND OPTICIAN

169, DUNSTABLE ROAD, LUTON

(Corner Kenilworth Road)

Recognised by the O.B.A.C. for

National Health Insurance Benefit

'PHONE 708

PARTRIDGE'S TOY FAIR

Hundreds and hundreds of dazzling new toys,
Especially created for good girls and boys;
Time-honoured favourites in brilliant array,
Newcomers, too, who WILL have their say;
Tricycles, bicycles, wagons and such
Gifts for those whom you love so much;
Beautiful dolls with movable eyes
Perfectly real, including their cries;
All of these gifts, and many more too,
Are stored in our Toyland, waiting for you;

SEE WINDOWS AND WALK ROUND TOYLAND AT

H. G. PARTRIDGE & Co.
10 - 12, CHAPEL STREET, LUTON

You need



**EASY-RUNNING
& RELIABILITY**

in the Country!

MODELS FROM £5:10:0 CASH
(Sturmey-Archer 3-speed gear 21/- extra, cash)
Deferred Terms from
5/- down and 12 equal monthly payments (from 10/7). Sturmey-Archer 3-speed gear 21/- extra, monthly. Call for "The Book of the Raleigh."

RALEIGH
THE ALL-STEEL BICYCLE

NO CYCLE IS COMPLETE WITHOUT THE FAMOUS STURMEY-ARCHER 3-SPEED GEAR.

Local Agents—

PARTRIDGES, 10-12, CHAPEL STREET, LUTON