



# LUTON TOWN FOOTBALL AND ATHLETIC CO. LTD.

OFFICIAL  
JOURNAL

PRICE 2d



League—Division II

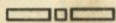
November 26th, 1938.

LUTON TOWN v. SHEFFIELD WEDNESDAY

**“TRUE-FORM”**  
THE FINEST FOOTWEAR  
IN THE TOWN



BUY DIRECT FROM THE MAKERS



LOCAL BRANCH:

**32, GEORGE STREET**

Head Office and Factories: NORTHAMPTON



*Insist upon the  
Building Materials for  
your new house coming from*

## POWDRILL'S

BUILDERS' MERCHANTS  
COAL and COKE MERCHANTS  
BRICK MANUFACTURERS  
SAND & GRAVEL QUARRY OWNERS

GEORGE POWDRILL & SON LTD., 1, 3 & 5, HITCHIN ROAD, LUTON  
TELEPHONE 2073 (2 Lines)

## HELEY'S CAFE

MILL STREET

NEXT TO PALACE THEATRE, LUTON

DINNERS

11.30 — 2.30

TEAS

3.30 — 6

SUPPERS

6 — 12

SPECIAL

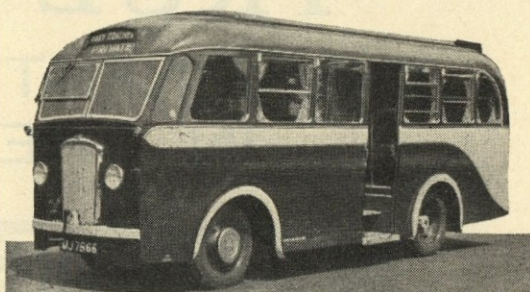
FOOTBALL TEAS

FISH AND CHIPS

SAUSAGE AND MASH

— ETC. —

PROPRIETOR: A. S. HELEY



## COOPERS COSY COACHES

F. J. COOPER LTD.

20, 26 and 30 Seater  
Coaches for private hire,  
also stream lined 7 Seater  
Car for weddings and  
long distances

OXEN ROAD GARAGE

'Phone LUTON 731

LUTON  
FOOTBALL AND



TOWN  
ATHLETIC CO.

Telephone No. 3151-2.

LIMITED.

President: Alderman Harry Arnold, C.A., J.P.

Vice-President: The Right Honourable E. Leslie Burgin, M.P., P.C., D.L.I.,  
(His Majesty's Minister of Transport).

Directors:

Chairman: Chas. Jeyes, Esq., C.C.

E. Hugh Woods, Esq. (Vice-Chairman), Frank J. Andrews, Esq., Councillor Horace S. Hewson,  
Percival G. Mitchell, Esq., Henry Richardson, Esq., C.C., Philip W. Wright, Esq.

Team Manager: Mr. Neil McBain.

Secretary: Mr. A. E. Wickson.

Honorary Medical Officer: E. J. Crarer, Esq., M.B., Ch.B.

Honorary Solicitors: Messrs Machin & Co., 17-19, George Street West, Luton.

### CLUB NOTES by "Hatter"

OUR match at Bury can be compared with the variations of the English weather. The first half saw a first class "Shakers" team, whose positional play, manoeuvring of the ball and passing was equal to International standard, and who, but for the really magnificent exhibition given by Joe Coen, would have been leading by half a dozen goals at least at the interval. I am informed that Joe has never given such a brilliant display as in this game, saving what looked like scoring shots all the way, not on one, but on numerous occasions. To him therefore, must go in my opinion, chief honours for the victory. The second half was a transformation, our boys instead of being on the defensive, assumed the initiative and how they went about their task is now so much history. The story has been told so often that I do not profess to repeat it here. Surely it must go down as the most outstanding event of the season. During the week I have heard many comments as to why we can win away from home and yet before our own supporters fail to do so. There may be other reasons, but to my mind two are predominant. First of all I do not think the boys receive at home their due amount of vocal support; there is a very noticeable rumble of dissent, if in the first advance made down the field, the ball is lost when perhaps it should not have been. This you will say, should not affect all the players, but perhaps during the next advance another player loses the ball. There are repeated rumbles of dissent and all the players hear it. Now when this happens continually it does affect them and whilst it does not make them frightened to play before their own supporters, it gives them a preference for playing away. Now this should not be and a remedy is for continual support, especially vocal. The second reason is that our boys have shown a preference for a wider playing pitch, where there is more room to make the ball work; our playing pitch at Luton is rather narrower than the average.

The "Stiffs" and the "A" team both won their matches against West Ham Reserves and Biggleswade and District respectively and conse-

quently continued their challenge for championship honours. Today the "Stiffs" visit the "Cobblers," whilst the "A" team entertain St. Neots and District at the Ford End Road Ground.

This afternoon we welcome Sheffield Wednesday, who last season shared four goals here and were the victors by four clear goals at Hillsborough. Last Saturday they ran up seven goals without any reply from Norwich City and as our boys scored five in forty-five minutes too, if a continuance of these spectacles happen, then we ought not to complain of our money's worth this afternoon. I was rather pleased with my forecast of the win at Bury and being so minded am going to prophesy a home victory this afternoon. We cannot go on much longer without one.

Now when I commenced to write these notes I intended to give pride of place to the Luton Schoolboys. On Saturday next, on this ground, they entertain Ipswich Boys in the Third Round of the English Schools Shield. The Kick-Off has been fixed for 12 o'clock, which is as late as can be arranged in view of the Combination match against Bristol City Reserves at 2.30 p.m. The Schools Association have a debit balance as a result of previous rounds, so I make an appeal to all supporters to come and give the Boys a hand up next Saturday. These schoolboys matches are worth seeing too, for rare footcraft is displayed on occasion.

Supporters are earnestly requested not to invade the playing pitch at any time before, during or after the match. The reason for this is obvious and the policemen and officials on duty have orders to eject any persons infringing this instruction.



# ATTENDANCE BAROMETER

					1937			1938		
					£	s.	d.	£	s.	d.
Aug. 28	Aug. 27	Brighton & Hove Reserves ...	...	...	7346	167	0	6356	144	15
	Aug. 31	Southend United Reserves ...	...	...	...	...	...	...	...	...
Sept. 1	Sept. 3	Newcastle United ...	...	...	25349	1299	14	17689	811	11
	Sept. 7	Aston Villa ...	...	...	...	...	...	...	...	...
Sept. 4	Sept. 10	Norwich City ...	...	...	20610	994	1	16547	747	0
	Sept. 17	Manchester United ...	...	...	...	...	...	...	...	...
Sept. 8	Sept. 24	Tottenham Hotspur Reserves ...	...	...	4823	93	6	5955	131	1
	Oct. 1	Clapton Orient Reserves ...	...	...	...	...	...	...	...	...
Sept. 11	Oct. 5	Watford Reserves ...	...	...	7725	175	7	7256	163	5
	Oct. 8	Chelsea Reserves ...	...	...	...	...	...	...	...	...
Sept. 18	Oct. 15	Southend Reserves ...	...	...	23788	1235	7	5826	126	10
Sept. 22	Oct. 22	Tottenham Hotspur ...	...	...	3626	69	19	...	...	...
	Oct. 29	Leicester City Reserves ...	...	...	...	...	...	...	...	...
Sept. 25	Nov. 5	Sheffield United ...	...	...	6558	142	1	17436	808	7
	Nov. 12	Queens Park Rangers Reserves ...	...	...	...	...	...	...	...	...
Oct. 2	Nov. 19	Chelsea Reserves ...	...	...	17650	821	19	7831	182	7
	Nov. 20	Bury ...	...	...	...	...	...	...	...	...
Oct. 9		Leicester City Reserves ...	...	...	...	...	...	1300	33	14
		Tottenham Hotspur ...	...	...	...	...	...	21061	1067	7
Oct. 16		Brighton & Hove Reserves ...	...	...	5236	107	4	14955	684	3
		Bradford ...	...	...	...	...	...	...	...	...
Oct. 23		Swansea Town Reserves ...	...	...	6592	141	16	6698	151	14
		Brentford Reserves ...	...	...	...	...	...	...	...	...
Oct. 30		West Ham United ...	...	...	17757	897	18	16819	782	12
		Blackburn Rovers ...	...	...	...	...	...	...	...	...
Nov. 5		Reading Reserves ...	...	...	5571	116	1	5744	129	16
		Clapton Orient Reserves ...	...	...	...	...	...	...	...	...
Nov. 13		Blackburn Rovers ...	...	...	16776	818	16	18331	910	7
		West Ham United ...	...	...	...	...	...	...	...	...
Nov. 20		Millwall Reserves ...	...	...	6929	149	18	6208	137	11
		West Ham United Reserves ...	...	...	...	...	...	...	...	...
		Chesterfield ...	...	...	17088	802	11	...	...	...
			...	...	183424	7983	6	176012	7012	16

N.B. The attendance figures for both League II and London Combination matches, include the number of Season Tickets issued. The gate receipts are the net amounts received after Entertainment Tax has been deducted.

## "A" TEAM FIXTURES

### UNITED COUNTIES LEAGUE

Season 1938-9

Matches will be played at Ford End Road, Bedford

					F. A.
Sat., Aug. 27	Wellingborough ...	...	...	A	3 1
Sat., Sept. 3	Stewart and Lloyds ...	...	...	H	0 0
Sat., Sept. 17	Wisbech ...	...	...	A	2 2
Mon., Sept. 26	Rushden ...	...	...	A	1 1
Sat., Oct. 8	Spalding ...	...	...	H	4 1
Sat., Oct. 22	Biggleswade (Beds. Invit. Cup)	...	...	A	4 1
Sat., Oct. 29	All Blacks (Friendly)	...	...	H	10 2
Sat., Nov. 5	Bedford ...	...	...	A	2 1
Sat., Nov. 19	Biggleswade ...	...	...	A	3 1
Sat., Nov. 26	St. Neots ...	...	...	H	
Sat., Dec. 3	Wellingborough (U.C. Cup)	...	...	A	
Sat., Dec. 10	Bedford Town (Friendly)	...	...	H	
Sat., Dec. 24	Rushden ...	...	...	H	
Mon., Dec. 26	St. Neots ...	...	...	A	
Sat., Dec. 31	Stewart and Lloyds ...	...	...	A	
Sat., Jan. 7	Biggleswade ...	...	...	H	
Sat., Jan. 21	Desborough ...	...	...	A	
Sat., Feb. 4	Kettering ...	...	...	A	
Sat., Feb. 11	Stamford ...	...	...	H	
Sat., Feb. 18	Wisbech ...	...	...	H	
Wed., Mar. 1	West Ham "A" (Friendly)	...	...	H	
Sat., Mar. 4	Bedford ...	...	...	H	
Sat., Mar. 18	Wellingborough ...	...	...	H	
Sat., April 1	Kettering ...	...	...	H	
Fri., April 7	Stamford ...	...	...	A	
Sat., April 8	Spalding ...	...	...	A	
Mon., April 10	Luton League (Friendly)	...	...	H	
Sat., April 15	Desborough ...	...	...	H	
Sat., April 29	Northfleet United (Friendly)	...	...	H	
Sat., May 6	Northfleet United (Friendly)	...	...	A	

## UNITED COUNTIES LEAGUE

	Pld.	Won	Drn.	Lost	For	Agst.	P.
Kettering Town ...	11	8	3	0	26	14	19
Luton "A" ...	7	4	3	0	15	7	11
Rushden ...	4	3	1	0	12	7	7
Bedford Town ...	5	1	2	2	10	10	4
Biggleswade ...	5	2	0	3	13	15	4
Spalding United ...	6	2	0	4	14	17	4
Desborough ...	7	1	2	4	11	14	4
Corby ...	3	1	1	1	4	3	3
Stamford Town ...	4	1	1	2	9	12	3
Wellingborough ...	5	1	1	3	9	13	3
Wisbech Town ...	4	0	2	2	8	13	2
St. Neots ...	5	1	0	4	9	15	2

What I can't understand about Londoners  
Is why they try to be funny,  
We know their players are wonders  
And also they have the money.

But why the cynical visage,  
The scoff at the country team,  
The town called the village  
And ground the village green?

What I can't understand about Londoners  
Is—they don't realise at all  
That if there were no villagers  
There would be no London football.

H.B.

## ENGLISH SCHOOLS SHIELD—ROUND THREE

# LUTON BOYS v. IPSWICH BOYS

on Luton Town Ground  
on DECEMBER 3rd, 1938

KICK-OFF 12 o'clock

— ADMISSION —  
CHILDREN 3d. ADULTS 6d. STAND 1/-

## ALBUMS

At the request of a number of supporters we have had prepared an Album to contain the Art Plates of our Football Personalities, which we present with this programme at League II matches.

## PLAYER'S APPEARANCES

	League II		London Comb.		Utd. Counties		League F.A. Cup		Other Matches		Total	
	App.	Goals	App.	Goals	App.	Goals	App.	Goals	App.	Goals	App.	Goals
Billington, H. J. R. ...	3	4	15	14					1	1	19	19
Burgess, W. W. ...			5	1							5	1
Campbell, R. ...			7	1							12	1
Carroll, J. ...	1		1		2				3		7	
Carte, R. ...	2		5		2				4		13	
Clark, C. ...	5	3	6	4	4	2					15	9
Coen, J. L. ...	5		14						1		20	
Connelly, E. ...	14	6							1		15	6
Dolman, H. W. ...	10				2				2		15	
Dreyer, G. ...			10	1					2		12	1
Dunsmore, T. H. ...	13								1		14	
Ferguson, C. ...	9	1	1		2	3			2	2	14	6
Finlayson, J. ...	15								1		16	
Gager, H. E. ...			18	4	1				1		20	4
Gardiner, D. ...			3		5				3	1	11	1
Goodyear, G. ...					2				1		3	
Hogg, F. ...			7		3	1			4	4	14	5
Kidd, G. I. ...			6						1		7	
King, T. P. ...			12		1						13	
Laing, J. F. ...			4	1	5	1			2		11	2
Lewis, J. ...			18						1		19	
Loughran, J. ...	15								1		16	
Lutterloch, B. R. ...			19						2		21	
Mayberry, S. ...			5		5				1		11	
Nelson, J. H. ...	15								1		16	
Redfern, W. J. ...	6	2	14	11					1	2	21	15
Roberts, F. ...	11		4	3					1	1	16	4
Smith, T. S. ...	15								1		16	
Stephenson, G. H. ...	14	4	1	1					1		16	5
Stevens, R. F. ...			17	9					1		19	9
Strathie, J. ...			1		6	1			3		10	1
Vinall, E. J. ...	12	5	3	1					1	1	16	7
Wale, J. ...			10		3				2		15	
Amateurs and Others	1		2		28	4			8	7	38	12

Next Match, Saturday, December 3rd, 1938.

LONDON COMBINATION

# LUTON TOWN RES. v. BRISTOL CITY RES.

Kick-Off 2.30 p.m.

ADMISSION—Centre Stand 1/6

Stand and Enclosure 1/- Ladies and Boys 6d. : Ground 6d. Boys 3d.

(ALL PRICES INCLUDE ENTERTAINMENT TAX)

Will any supporters who desire one of these Albums please place their orders at the office, 70-72, Kenilworth Road, Luton. Price 1/6 each.

**DO NOT MISS OBTAINING A COPY OF THE PROGRAMME ON SATURDAY, DECEMBER 10th. It will contain a full sized autographed Art Plate of Jack Vinall.**

Back numbers of previous programmes including Art Plates, can be obtained on application to the Editor, 70-72, Kenilworth Road, Luton. Price 2d.

**PURCHASE A PROGRAMME AND HELP THE FOOTBALL CLUB.**



**CENTRE** your attention for one moment on these Modern Houses which we have TO LET in all parts of the Town. All at inclusive rentals from 15/6 weekly. We shall be pleased to supply keys and further particulars and arrange for your inspection.

Shelley Road 15/6 inc.	Bradley Road 16/6 inc.	Runfold Avenue 16/9 inc.
Icknield Road 16/- inc.	Pembroke Avenue 16/9 inc.	Runley Road 17/- inc.
Atherstone Road 16/6 inc.	Carisbrooke Road 16/9 inc.	Trinity Road 17/6 inc.
	Brackendale Grove 16/9 inc.	

## SELL & MITCHELL

*Auctioneers, Land & Estate Agents*

7 & 9, PRINCESS STREET, LUTON

'PHONE 2003/4

95, HIGH STREET NORTH, DUNSTABLE

'PHONE 354

**a**  
Point  
to remember!  
**E. A. ALLEN**  
the Printer of this  
Programme  
WILL GIVE SERVICE  
AND SATISFACTION  
424, DUNSTABLE ROAD  
LUTON  
Telephone 1626

### To-Day's Half-Time Scores

#### FIRST LIST

A	BIRMINGHAM	v.	PORTSMOUTH	0-0
B	BOLTON WAN.	v.	GRIMSBY T.	0-1
C	CHARLTON A.	v.	SUNDERLAND	2-0
D	CHELSEA	v.	WOLVES	0-1
E	LEEDS UNITED	v.	DERBY CO'NTY	1-2
F	LEICESTER C.	v.	BRENTFORD	1-1
G	LIVERPOOL	v.	BLACKPOOL	1-0
H	MANCH. UN.	v.	HUDDERSFIELD	0-1
K	MIDDLESBRO'	v.	ARSENAL	0-1
L	PRESTON N.E.	v.	ASTON VILLA	3-2
M	STOKE CITY	v.	EVERTON	0-0
N	BURNLEY	v.	TRANMERE R.	2-1

NOTE—The Letter in the Programme corresponds with the letter on the Board—thus A 0-1 means that the first-named Club has scored 0 and their opponents 1.

MONO BRAND



#### Specialities

Paint and Enamel  
Manufacturers

"Stuart" Series  
Wallpapers

**OGDEN & CLEAVER**

Stuart Street, LUTON

TELEPHONE 580

## LUTON GAS COMPANY

JUST A TURN OF THE TAP  
AND GAS GIVES INSTANT  
HOT WATER, REAL FIRE-  
SIDE COMFORT, CAREFREE  
COOKING

*Be up-to-date with Gas*

Showrooms—GEORGE STREET  
and DUNSTABLE ROAD

## THE BEST DEFENCE

against

WINTER'S ATTACK

**'OXAVIN'**  
TONIC WINE

Large Bottle 4/6  
Medium Bottle 2/6

**L. GREENER,** Wine Merchant  
60, WELLINGTON STREET, LUTON  
(Corner of Stuart Street)

## H. R. WILLIAMS

REGISTERED  
ELECTRICAL CONTRACTOR

and Member of the  
Electrical Contractors' Association

17, DURHAM ROAD  
LUTON

'PHONE: LUTON 2012

## NEWBERY

& CO. (LUTON) LIMITED

32/36, CROMWELL ROAD  
LUTON

Builders' Merchants

Ironmongers

Door and Gate Importers

PHONE 294

PRIVATE 511

PHONE 223

EST. 1860

## WHITE'S

again supply

LUTON TOWN  
FOOTBALL CLUB

WITH THEIR  
FOOTBALL  
BOOTS

THEY know the Best

**H. WHITE** (LUTON) LTD.

FOOTWEAR

of every description

MANCHESTER STREET  
LUTON

### To-Day's Half-Time Scores

#### SECOND LIST

A	COVENTRY C.	v.	BRADFORD	2-0
B	NEWCASTLE	v.	MILLWALL A.	1-1
C	NORWICH C.	v.	FULHAM	1-2
D	NOTTS. FOR.	v.	MANCH. CITY	1-1
E	SHEFFIELD UN.	v.	WEST HAM U.	2-1
F	SOUTHAMPTON	v.	SWANSEA T.	2-1
G	TOTTENHAM	v.	CHESTERFIELD	0-0
H	WEST BROM.	v.	BLACKBURN	1-0
2.45 p.m. KICK-OFFS				
K	PLYMOUTH	v.	BURY	
F.A. CUP—FIRST ROUND				
L	ALDERSHOT	v.	GUILDFORD C.	0-0
M	BOURNEM'UTH	v.	BRISTOL CITY	1-1
N	BRISTOL ROV.	v.	PETERBORO'	2-1

**S.J. HAWKINS**  
STATION WORKS, FLITWICK, BEDS.

'PHONE: FLITWICK 253

PNEUMATIC TYRED  
TRUCKS, TROLLEYS AND  
BARROWS  
for all trades

WHOLESALE AND RETAIL

Send for List L101 Post Free

## CYCLES & REPAIRS

Get your new machine from

**S. A. LEWIS**  
138, DUNSTABLE ROAD  
LUTON

PHONE 807

Terms from


2/-  
Weekly

All kinds of  
repairs executed  
by experienced  
workmen



# MARES

for men's  
**JAEGER**  
for  
**WARMTH**

Charles  
 **MARES** Limited  
GEORGE STREET, LUTON  
And at St. Albans

TODAY

## PALACE THEATRE

LUTON

TODAY

ADOLPHE MENJOU and  
THE RITZ BROTHERS  
— IN —

### "THE GOLDWYN FOLLIES"

NEXT WEEK

(U)

NEXT WEEK

TOM WALLS and  
RENE SAINT-CYR in 'STRANGE BOARDERS'

(A)

## FIRST PRIZE won by J.W. GREEN'S BITTER BEER

other awards for  
OATMEAL STOUT and LUTONIAN STOUT

AT BREWERS' EXHIBITION, LONDON  
November, 1938

J. W. GREEN LIMITED, The Brewery, LUTON

Telephone - Luton 3131

## L-M-S RAILWAY

DECEMBER 26th, 1938  
(BOXING DAY)

## NOTTS FOREST v. LUTON TOWN

Depart Luton 11.5 a.m.  
Return from Nottingham 6.30 p.m.

RETURN FARE 5/9

Football, Rugby,  
Hockey, Badminton,  
Table Tennis,  
Miniature Billiard  
Tables, Dominoes  
and all Indoor Games

DART BOARDS and  
DARTS a Speciality

Roller Skates and Boots  
in Great Variety

## G. A. WILD AND SONS

Sports Outfitters

14, Manchester Street, Luton  
103, High Street N., Dunstable

## BOOK AT BAILEY'S FOR LONDON COASTAL COACHES ALL INDEPENDENT SERVICES JERSEY AIRWAYS LONDON THEATRES AND AMUSEMENTS

Daily Services to all  
parts of Great Britain

TOBACCONIST  
AND BOOKING AGENT

38, NEW BEDFORD ROAD  
LUTON  
Phone 1972

### LUTON TOWN

Shirts White  
Knickers Black  
Stockings Black with White Tops

1  
Coen  
Goal

2  
Smith  
Right Back

4  
Finlayson  
Right Half

7  
Clark  
Outside Right

8  
Redfern  
Inside Right

Referee—  
W. P. HARPER  
(Stourbridge)

12  
Fallon  
Outside Left

13  
Napier  
Inside Left

17  
Burrows  
Left Half

20  
Lester  
Left Back

### SHEFFIELD WEDNESDAY

Shirts Blue and White Vertical Stripes  
Knickers Dark Blue  
Stockings Blue and White Hoops with White Tops

22  
Goodfellow  
Goal

### League—Division II

3  
Dunsmore  
Left Back

6  
Loughran  
Left Half

10  
Connolly  
Inside Left

Linesmen—  
Blue Flag: R. M. BURCH  
(Palmer's Green)  
Red Flag: E. PRATT (Romford)

15  
Robinson  
Inside Right

19  
Russell  
Right Half

21  
Ashley  
Right Back

Kick-Off 2.30 p.m.

MODERN  
FIREPLACES

HEATING  
APPLIANCES

Up-to-date Sanitary Fittings  
in White and Colours

For ARTISTIC WALLPAPERS

**CHARLES  
BIRD & SONS  
LTD.**  
COLLINGTON STREET  
LUTON

Telephone: Luton 1255/1256

For QUALITY PAINTS

"Triplex" Safety Glass  
Motor Screens (Fitted)

Makers of

MIRRORS—SPLASH BACKS—GLASS  
SHELVES & GLASS FIRE SCREENS

**HARRY CANHAM**

Cardboard Box

Packing Case, Ply Box and

Crate Manufacturer

9a, MARKET HILL, LUTON

TELEPHONE 458

## WAKE UP YOUR LIVER BILE

without Calomel—and you'll jump out of bed in  
the morning full of vim and vigour

YOUR LIVER should pour out  
two pints of liquid bile into  
your system daily. If this bile is  
not flowing freely, your food  
doesn't digest. It just decays  
inside you. Gas bloats up your  
stomach. You get constipated.  
Your whole system is poisoned  
and you feel sour, sunk, and the  
world looks punk.

Laxatives help a little, but a  
mere bowel movement doesn't

get at the cause. It takes those  
good old Carters Brand Little  
Liver Pills to get these two pints  
of bile flowing freely and make  
you feel "up and up." Harmless,  
gentle, yet amazing in making  
bile flow freely. Ask  
for Carters Brand Little  
Liver Pills.

Stubbornly refuse any-  
thing else. 1/3 and 3/- at  
all chemists.

NOW ALSO IN  
**PENNYWORTHS**  
EVERYWHERE

## "THROW-IN" your lot with us and BUY YOUR OWN HOUSE We also offer A GOOD INVESTMENT

Write for our attractive terms:

**LUTON & MIDLANDS  
BUILDING SOCIETY**

Telephone: Luton 1067

11, George St.  
West  
LUTON

## WEBDALE'S of WELLINGTON STREET

— FOR —

KITCHEN EQUIPMENT

AND ALL

HOUSEHOLD REQUIREMENTS

AT LOWEST PRICES

21 to 27, WELLINGTON STREET

'Phone 41

LUTO N



**Charnley**  
and Sons  
REGISTERED  
OPTICIANS

NATIONAL HEALTH  
INSURANCE

On the Official List of  
H.S.A. OPTICIANS

11, Wellington Street  
LUTON  
Telephone 1808

Over 50 years in the  
Printing Trade  
in Luton  
○○○○○

**W. F. BUNKER**

WILL HELP YOU IN  
THE PRODUCTION  
OF YOUR PRINTING  
REQUIREMENTS

26a, CHAPEL STREET  
LUTON  
PHONE 224

**E. A. GREEN**

BOOKSELLER  
NEWSAGENT  
STATIONER

*Luton's Most Progressive  
Circulating Library*

21a, New Bedford Road  
and 228, Biscot Road  
LUTON  
Telephone 476

**F. WHITE**

BUILDER  
and  
CONTRACTOR  
141,  
Stockingstone Road  
LUTON

—□—  
ALL CLASSES OF  
REPAIRS, PAINTING  
AND DECORATING  
UNDERTAKEN

Estimates Free

### To-Day's Half-Time Scores

#### THIRD LIST

A	CHELTENHAM	v. CARDIFF C.	1-0
B	CLAPTON O'	v. HAYES	3-0
C	CRYSTAL PAL.	v. QUEEN'S P. R.	1-0
D	IPSWICH T.	v. STREET	1-0
E	OLDHAM A.	v. CREWE ALEX.	2-1
F	READING	v. NEWPORT CO'	2-2
G	SOUTHEND U.	v. CORINTHIANS	1-0
H	SWINDON T.	v. LOWESTOFT T.	5-0
K	TORQUAY U.	v. EXETER CITY	1-0
L	WATFORD	v. NORTHAMPT'N	0-3
M	YEOVIL	v. BRIGHTON & H.	1-1
N	WREXHAM	v. PORT VALE	1-1

W.  
**CHAMBERLAIN**  
& Co.

Proprietors—  
A. M. Chamberlain  
R. Deadman  
106, Dunstable Road  
LUTON

Best British Made  
Brushes and Brooms  
Enamel Ware

City of London  
White Lead Paint

Messrs Merrediths & Co.  
Merlac Enamel Paints

Fadeless Wall Paper  
Ask for Pattern Books

—□—  
A TRIAL SOLICITED

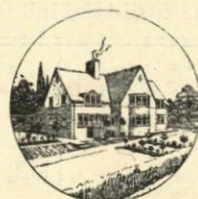
**W. HOLES**

3, Gordon Street, Luton  
Coal and  
Coke Merchant

Authorised Agent for  
Luton Gas Company's  
large and graded coke

Agent for  
L.M.S. Passenger Dept.

Telephone 210



TELEPHONE:  
LUTON 2126

**P. W. SMITH**

Builder — Contractor  
High Class Decorator

418, DUNSTABLE ROAD  
LUTON



### LUTON BOBBERS STAND CLUB

President: P. W. Wright, Esq.

Vice-Chairman: E. G. Gibbs, Esq.

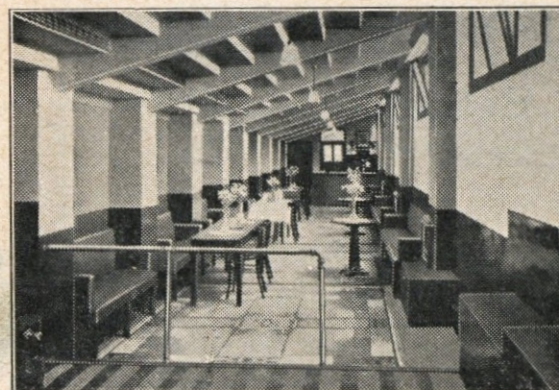
Hon. Secretary: Mr. A. C. Wright

Hon. Treasurer: Mr. J. Collier

Committee:

Messrs W. Banks, F. Cooper, A. Flitton,  
N. Lines, S. Setchell, R. G. Smith

TELEPHONE 2566



The Club's most important item to you this week is the Christmas Draw Tickets which are on sale at one penny each. Every ticket you buy not only gives a donation to the New Stand Fund, but also helps you to participate in the Christmas Draw, now supporters do your bit and help to make this a success. Tuesday evening was the Secretary's night, when about twenty of his late colleagues at the Ministry of Labour honoured him with a visit to the Club. A most enjoyable evening was spent in tournaments and music, the visitors being so much impressed with the Club that many are becoming members. Their parting wish was for a similar

night on some future occasion. In our last week's report we were hoping the "B" team which played in the People's National Dart Tournament would be successful, unfortunately our wishes were not fulfilled as they were beaten by the Vauxhall Motors, so we must wish our remaining team in the competition every success in the next round. The Skittles Team found their winning form again on Tuesday, when they visited the Beech Hill Club, and after a very good game beat Beech Hill "B" team. The Mystery Nights, held on Thursday evenings, are still proving very popular, and good attendances are kept up. For 1/2 per year you can be a Bobber. Call and see the Secretary who will be pleased to enrol you.

## THE CENTRAL RESTAURANT

20/22/24, CHEAPSIDE  
LUTON  
○○○

SEATING FOR  
300

ESTABLISHED  
60 YEARS

Phone 172 and book a table  
and have your meal in comfort

WE CAN CATER FOR YOU  
ANYWHERE  
ANY TIME  
ANY NUMBER

A. E.  
**NICHOLLS**

Wholesale  
CONFECTIONER & TOBACCONIST

CAN SUPPLY YOU WITH  
EVERYTHING YOU WANT  
FOR THE TOBACCO AND  
CONFECTIONERY TRADE  
AT LOWEST PRICES



Prompt Delivery and Civility

16, MILL STREET, LUTON

'Phone: Luton 902



# CHARLES JEYES LTD.

## The Luton Builders

have the following houses TO LET

### 3 Bedroom House—Swan Lane

*Rent 16.6 per week inclusive*

## To Let

1 Large Garage or Store.

### 3 Bedroom House—Beechwood Road

Rent 15/- per week exclusive

### Burrs Passage off Langley Road

Rent £1|1|0 per week exclusive

### 3 Bedroom House—Cavendish Road

Rent 16/- per week exclusive

For Sale

Superior Villa in Humberstone Road

### 3 Bedroom House—Oakley Close

Rent 16/6 per week inclusive

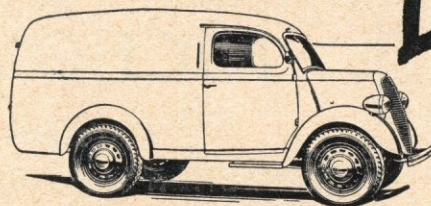
Land in the best parts of the town

Apply

17a, WINDSOR STREET, LUTON

TELEPHONE 594

**YOUR CHRISTMAS DELIVERIES  
WILL COST YOU**



**Less**

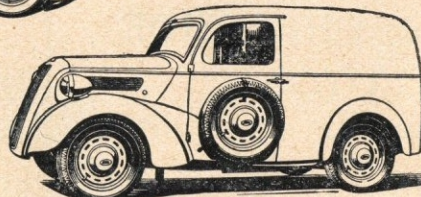


**FORDSON 10 CWT. VAN**  
**NOW £165**

**FORDSON 5 CWT. VAN**  
**NOW £112/10**

(Prices at Works)

Renowned alike for smartness, speed and economy, the Fordson 5 cwt. and 10 cwt. vans, at the new price, offer exceptional value.



# Fordson

COME IN AND SEE THEM AT

# LUTON MOTOR Co., Ltd.

SOLE WHOLESALE FORD DISTRIBUTORS FOR THIS DISTRICT

**BEECH HILL - DUNSTABLE ROAD - LUTON**

## Football League Division II — RESULTS AT A GLANCE

	Blackburn R.	Bradford	Burnley	Bury	Chesterfield	Coventry City	Fulham	Luton Town	Manch. City	Millwall	Newcastle U.	Norwich City	Notts Forest	Plymouth A.	Sheffield U.	Sheffield W.	Southampton	Swansea T.	Tottenham H.	Tranmere R.	West Brom.	West Ham U.
Blackburn Rovers	H A	4 0	2 3	.....	2 0	0 2	.....	1 1	3 3	1 4	3 0	.....	3 1	.....	1 2	0 3	.....	4 0	3 1	3 2	.....	3 1
Bradford	H A	0 4	2 2	1 0	.....	.....	0 4	2 2	4 2	1 3	0 1	3 1	.....	2 2	3 1	3 1	2 1	1 1	2 2	3 0	.....	2 1
Burnley	H A	3 2	.....	0 1	2 3	1 1	0 0	3 2	.....	1 1	2 3	0 4	2 1	0 1	.....	.....	2 1	1 1	.....	.....	0 3	.....
Bury	H A	.....	1 0	+	3 1	0 0	0 2	2 5	.....	0 0	.....	1 3	2 1	.....	.....	.....	5 2	3 3	.....	0 3	3 3	1 1
Chesterfield	H A	0 2	3 2	1 3	+	0 2	0 2	.....	0 3	1 3	.....	2 0	.....	3 1	1 1	3 1	.....	1 1	.....	1 0	0 1	1 0
Coventry City	H A	2 0	1 1	0 0	2 0	+	.....	1 0	0 3	2 1	1 0	.....	0 3	.....	0 0	2 2	3 0	.....	1 2	.....	1 3	1 4
Fulham	H A	.....	4 0	0 0	2 0	.....	+	.....	5 3	2 1	1 2	.....	2 2	0 0	.....	.....	1 1	1 1	0 1	1 0	3 0	3 2
LUTON TOWN	H A	1 1	2 2	2 3	5 2	0 1	.....	+	2 1	2 1	2 1	2 1	.....	1 4	2 0	.....	.....	3 2	0 0	3 2	0 3	1 2
Manchester City	H A	3 3	2 4	.....	3 0	3 0	3 5	1 2	+	1 6	.....	.....	.....	0 0	3 2	1 3	2 1	5 0	2 0	.....	1 3	2 4
Millwall	H A	4 1	3 1	1 1	0 0	3 1	1 2	.....	6 1	+	.....	2 0	5 0	3 0	1 2	.....	0 1	1 1	0 2	.....	.....	.....
Newcastle United	H A	.....	1 0	3 2	.....	0 1	2 1	1 2	.....	.....	+	.....	4 0	2 1	0 0	2 0	1 0	.....	0 1	5 1	5 1	1 1
Norwich City	H A	.....	1 3	4 0	3 1	0 2	.....	1 2	.....	0 2	.....	+	0 1	2 1	0 4	0 7	2 1	3 0	1 4	.....	2 3	0 2
Notts Forest	H A	1 3	.....	1 2	1 2	3 0	2 2	.....	.....	0 5	0 4	1 0	+	0 3	0 2	.....	2 2	1 2	2 1	1 1	.....	0 0
Plymouth Argyle	H A	.....	2 2	1 0	.....	1 3	0 0	4 1	0 0	0 3	1 2	1 2	3 0	+	1 0	.....	1 2	.....	.....	3 1	2 1	1 2
Sheffield United	H A	2 1	.....	.....	1 1	0 0	.....	0 2	2 3	2 1	0 0	4 0	2 0	0 1	+	0 0	.....	2 1	2 2	2 0	4 3	.....
Sheffield Wednesday	H A	3 0	1 3	.....	2 0	2 2	.....	.....	3 1	.....	0 2	7 0	.....	.....	0 0	+	3 4	1 1	3 3	2 0	1 5	3 2
Southampton	H A	.....	1 2	1 2	2 5	0 3	1 1	.....	1 2	1 0	0 1	1 2	2 2	2 1	.....	4 3	+	.....	1 2	3 1	2 1	.....
Swansea Town	H A	0 4	1 1	1 1	3 3	1 1	1 1	2 3	0 5	1 1	.....	0 3	2 1	.....	1 2	1 1	.....	+	1 1	.....	.....	.....
Tottenham Hotspur	H A	1 3	.....	.....	.....	2 1	1 0	0 0	0 2	.....	1 0	4 1	1 2	.....	2 2	3 3	2 1	1 1	+	3 4	2 1	.....
Tranmere Rovers	H A	2 3	0 3	.....	3 0	0 1	0 1	2 3	.....	2 0	1 5	.....	1 1	1 3	0 2	0 2	1 3	.....	.....	+	3 1	1 6
West Bromwich A.	H A	.....	.....	3 0	3 3	1 0	3 1	3 0	3 1	.....	5 2	3 2	.....	1 2	3 4	5 1	1 2	4 3	1 3	.....	+	.....
West Ham United	H A	1 2	.....	3 0	.....	4 1	2 3	2 1	4 2	.....	1 1	2 0	0 0	2 1	2 3	2 3	.....	5 2	1 2	6 1	.....	+



## FIXTURES, 1938 - 9

## FIRST XI Division II

F. A.

Sat., Aug. 27	West Bromwich Albion	...	A	0	3
Wed., .. 31	Newcastle United	...	4	1	H
Sat., Sept. 3	Norwich City	...	1	1	H
Mon., .. 5	Coventry City	...	1	2	A
Sat., .. 10	Manchester City	...	...	A	2
Sat., .. 17	Plymouth Argyle	...	4	2	A
Sat., .. 24	Sheffield United	...	2	3	H
Sat., Oct. 1	Burnley	...	2	3	A
Sat., .. 8	Tottenham Hotspur	...	2	4	H
Sat., .. 15	Bradford	...	4	2	H
Sat., .. 22	Swansea Town	...	1	1	A
Sat., .. 29	Blackburn Rovers	...	4	1	H
Sat., Nov. 5	Tranmere Rovers	...	...	A	3
Sat., .. 12	West Ham United	...	2	2	H
Sat., .. 19	Bury	...	4	3	A
Sat., .. 26	Sheffield Wednesday	...	2	2	H
Sat., Dec. 3	Fulham	...	1	4	A
Sat., .. 10	Chesterfield	...	1	1	H
Sat., .. 17	Millwall	...	...	A	...
Sat., .. 24	West Bromwich Albion	...	...	H	...
Mon., .. 26	Nottingham Forest	...	0	1	A
Tues., .. 27	Nottingham Forest	...	2	2	H
Sat., .. 31	Norwich City	...	4	0	A
Sat., Jan. 7	Manchester City	...	...	H	...
Sat., .. 14	Plymouth Argyle	...	1	1	H
Sat., .. 21	Sheffield United	...	0	2	A
Sat., Feb. 4	Burnley	...	3	1	H
Sat., .. 11	Tottenham Hotspur	...	0	3	A
Sat., .. 18	Bradford	...	1	1	A
Sat., .. 25	Swansea Town	...	5	1	H
Sat., Mar. 4	Blackburn Rovers	...	2	2	A
Sat., .. 11	Tranmere Rovers	...	...	H	...
Sat., .. 18	West Ham United	...	0	0	A
Sat., .. 25	Bury	...	0	1	H
Sat., April 1	Sheffield Wednesday	...	0	4	A
Fri., .. 7	Southampton	...	1	3	H
Sat., .. 8	Fulham	...	4	0	H
Mon., .. 10	Southampton	...	6	3	A
Sat., .. 15	Chesterfield	...	2	5	A
Sat., .. 22	Millwall	...	...	H	...
Sat., .. 29	Newcastle United	...	3	1	A
Sat., May 6	Coventry City	...	1	4	H

## RESERVE FIXTURES London Combination F. A.

Sat., Aug. 27	Brighton & Hove A.	...	6	2	H
Mon., .. 29	Millwall	...	0	3	A
Sat., Sept. 3	Bournemouth	...	1	1	A
Wed., .. 7	Tottenham Hotspur	...	0	2	H
Sat., .. 10	Watford	...	2	0	H
Sat., .. 17	Southend United	...	3	1	H
Mon., .. 19	Tottenham Hotspur	...	3	5	A
Sat., .. 24	Queens Park Rangers	...	0	4	A
Wed., .. 28	Southampton	...	2	0	A
Sat., Oct. 1	Chelsea	...	1	1	H
Wed., .. 5	Leicester City	...	0	1	H
Sat., .. 8	Charlton Athletic	...	0	4	A
Mon., .. 10	Leicester City	...	1	4	A
Sat., .. 15	Fulham	...	1	5	A
Sat., .. 22	Brentford	...	0	0	H
Sat., .. 29	Arsenal	...	0	1	A
Sat., Nov. 5	Clapton Orient	...	3	0	H
Sat., .. 12	Portsmouth	...	0	0	A
Sat., .. 19	West Ham	...	0	1	A
Sat., .. 26	Northampton Town	...	1	1	A
Sat., Dec. 3	Bristol City	...	3	1	H
Sat., .. 10	Swansea Town	...	1	0	A
Sat., .. 17	Crystal Palace	...	6	1	H
Sat., .. 24	Brighton & Hove A.	...	1	1	A
Mon., .. 26	Southampton	...	2	1	H
Sat., .. 31	Bournemouth	...	2	1	H
Sat., Jan. 7	Reading	...	3	1	H
Sat., .. 14	Watford	...	2	3	A
Sat., .. 21	Southend United	...	0	4	A
Sat., .. 28	Queens Park Rangers	...	2	2	H
Sat., Feb. 4	Chelsea	...	2	6	A
Sat., .. 11	Charlton Athletic	...	2	0	H
Sat., .. 18	Fulham	...	3	0	H
Sat., .. 25	Brentford	...	0	3	A
Sat., Mar. 4	Arsenal	...	1	2	H
Sat., .. 11	Clapton Orient	...	7	0	A
Sat., .. 18	Portsmouth	...	1	2	H
Sat., .. 25	West Ham	...	1	1	A
Sat., April 1	Northampton Town	...	3	3	H
Fri., .. 7	Coventry City	...	0	1	A
Sat., .. 8	Bristol City	...	2	3	A
Mon., .. 10	Coventry City	...	4	0	H
Sat., .. 15	Swansea Town	...	1	1	H
Sat., .. 22	Crystal Palace	...	3	1	A
Sat., .. 29	Millwall	...	5	1	H
Sat., May 6	Reading	...	4	1	A

## LEAGUE TABLES

## LEAGUE DIVISION II

	Pld.	Won	Lost	Drn.	For	Agst.	P.
Fulham	16	8	3	5	27	15	21
Newcastle United	16	9	5	2	29	19	20
Blackburn Rovers	16	9	5	2	35	24	20
Sheffield United	15	7	3	5	23	15	19
West Brom. A.	16	9	6	1	40	32	19
Millwall	15	7	5	3	31	15	17
West Ham United	16	7	6	3	34	24	17
Tottenham Hotspur	15	6	4	5	25	23	17
LUTON TOWN	15	7	5	3	26	25	17
Bradford	15	6	4	5	26	26	17
Sheffield Wednesday	15	6	5	4	32	26	16
Coventry City	15	6	5	4	17	19	16
Plymouth Argyle	15	6	6	3	21	19	15
Burnley	16	5	6	5	21	26	15
Manchester City	15	6	7	2	32	33	14
Chesterfield	15	6	7	2	17	22	14
Bury	15	4	6	5	21	27	13
Southampton	15	5	8	2	22	28	12
Norwich City	15	5	10	0	19	33	10
Swansea Town	15	1	6	8	17	33	10
Notts Forest	15	3	8	4	15	29	10
Tranmere Rovers	15	3	11	1	17	34	7

## LONDON COMBINATION

	Pld.	Won	Lost	Drn.	For	Agst.	P.
Arsenal	18	12	4	2	56	26	26
LUTON TOWN	19	11	4	4	51	27	26
Chelsea	18	12	5	1	44	26	25
Tottenham Hotspur	18	10	5	3	49	22	23
Watford	19	10	6	3	31	36	23
Coventry City	16	11	5	0	52	20	22
Queens Park Rangers	17	9	5	4	45	21	21
Portsmouth	18	8	5	5	44	33	21
West Ham United	17	9	5	3	41	33	21
Brighton & Hove A.	17	9	6	2	29	30	20
Brentford	18	7	6	5	44	36	19
Fulham	18	8	7	3	31	37	19
Bournemouth	19	6	6	7	35	38	19
Swansea Town	20	8	9	3	25	40	19
Crystal Palace	19	7	8	4	41	37	18
Southend United	15	7	4	4	25	22	18
Charlton Athletic	19	6	9	4	28	30	16
Leicester City	20	6	12	2	35	54	14
Millwall	18	5	10	3	23	44	13
Southampton	18	5	11	2	31	41	12
Bristol City	20	6	14	0	28	56	12
Northampton	17	4	11	2	18	37	10
Reading	17	3	10	4	29	59	10
Clapton O.	19	2	14	3	16	56	7

# Edward Martell & Co., Ltd.

TELEPHONE

896-7

Coal and Coke Merchants

ESTABLISHED

1879

24, UPPER GEORGE STREET, LUTON

## Burn "Hucknall" Ashless Coal

### It Scores Every Time!!

Popular Price! Saves Labour!! Great Heat!!!

WHY NOT TRY IT?

## CARRY ON LUTON TOWN!

a packet of

SWEET

## ROSEMARY

TOBACCO

is always enjoyable

## W. & F. FAULKNER LONDON

BRANCH OF THE IMPERIAL TOBACCO CO.  
(OF GREAT BRITAIN AND IRELAND), LIMITED

SEE that you "SEE"

all of the game  
comfortably,

if you cannot do so

CALL AND SEE

## A. G. PRATT

M.P.S., F.S.M.C.

CHEMIST AND OPTICIAN

169, DUNSTABLE ROAD, LUTON  
(Corner Kenilworth Road)Recognised by the O.B.A.C. for  
National Health Insurance Benefit

'PHONE 708



# PARTRIDGE'S TOY FAIR

Toyland opens today at Partridge's, when Father Christmas will arrive. What joyous news for your youngsters! Answers to magnificent dreams . . . dreams that only a child can dream! Of rosy-cheeked Dolls . . . of flashing Soldiers . . . of Skates and Trains, Bicycles and Games. Today is the Day when all their dreams come true. For Partridge's Toyland is a magic world . . . a fairy city for all boys and girls! Come to Toyland after the match!

The finest and best selection  
of Toys in the County

*A. G. Partridge & Co*  
PHONE 234 10-12 CHAPEL ST.  
LUTON

*You need*

**EASY-RUNNING  
& RELIABILITY**



NO CYCLE IS  
COMPLETE  
WITHOUT THE  
FAMOUS STUR-  
MEY-ARCHER  
3-SPEED GEAR.

*in the Country!*

**MODELS FROM £5:10:0 CASH**

(Sturmey-Archer 3-speed gear 21/- extra, cash)

Deferred Terms from

**5/-** down and 12 equal monthly payments (from 10/7). Sturmey-Archer 3-speed gear 2/1 extra, monthly. Call for "The Book of the Raleigh."

**RALEIGH**  
THE ALL-STEEL BICYCLE

Printed by E A Allen, 424, Dunstable Road, Luton. 'Phone 1626.

Published by Luton Town Football and Athletic Co., Ltd., Kenilworth Road, Luton.