



# BURY FOOTBALL-

OFFICIAL  
PROGRAMME

2<sup>D</sup>

# CLUB CO. LTD

# BURY INFIRMARY CONTRIBUTORY SCHEME.

## ARE YOU A MEMBER?

It helps you, and it helps your Hospital.

A Member of the Contributory Scheme receives FREE TREATMENT AT ANY VOLUNTARY HOSPITAL IN THE COUNTRY.

2d. weekly covers the contributor only.

3d. weekly covers the contributor and dependents.

If you are not a member make a point of joining at once.

Write, 'phone, or call for full particulars from—

THE ORGANISING SECRETARY,  
BURY INFIRMARY CONTRIBUTORY SCHEME,  
BANK BUILDINGS,  
UNION STREET,  
BURY.

Telephone BURY 1654.

# BURY FOOTBALL CLUB Co.LTD.

GIGG LANE, BURY.

## BOARD OF DIRECTORS:

Messrs. C. DEAN (Chairman), H. UNSWORTH (Vice-Chairman),  
F. HOPKINSON, G. B. HORRIDGE, L. N. FLETCHER,  
J. PRESTWICH, and C. CLARKE.

Secretary: ARTHUR PAINE.

Ground and Registered Office:—GIGG LANE, BURY.  
Telephone 238.

Colours:—White Shirts with Navy Blue Collars and Navy Knickers.

No. 14. Vol. 16.

NOV. 19th, 1938.

v. LUTON TOWN.

## CLUB GOSSIP

After the magnificent display a fortnight ago against West Bromwich Albion it was confidently expected that we should, at least, effect a draw at Norwich last week, and indeed it was hoped that our victory of last year would be repeated. But, to be quite frank, we were deservedly beaten by a better side on the day's play.

At no period throughout the game did we show anything of our previous week's form, and although we claim that at a very critical period of the match we were not allowed a perfectly legitimate equalising goal, which, without doubt, would have altered the ultimate result, it must be confessed that the spoils went to the side deserving of them.

Can we hope for a return of "West Bromwich" form to-day? If our players do reproduce it we can, without much doubt, reverse last season's result, and so move off the "unlucky 13" in our points column, when we entertain Luton Town.

\* \* \*

By their third consecutive victory, our Reserves, for the first time this season, have definitely left the last rung in the Central League ladder. Indeed they have won four out of their last five games, and their recent improvement is very encouraging.

To-day they have journeyed to Birmingham, where last season they were rather unfortunately defeated by the odd goal in three.

\* \* \*

On Tuesday next, at 2-30 we play our second home Northern Mid-week League fixture, when Burnley provide the opposition. These games are of a very interesting nature, and provide entertaining fare for those who, mainly through business calls, are unable to witness a game on a Saturday. Only a nominal charge of 3d. is made, and admission to the stands is free. Season ticket holders are, naturally, admitted to these games without payment.

\* \* \*

The International match at Old Trafford last Wednesday, when England soundly defeated Ireland by seven clear goals, reminds one that it used to be the practice of the English selectors to let the honours, and with them the International caps, go round. They did not believe in keeping them within a limited circle—indeed the minor matches—those against Wales and Ireland—as they were then looked upon, were often regarded as occasions and excuses to give men an International rating they would not otherwise have had.

THE

Original

BURY

PUDDINGS

SOLE MAKERS

CASEWELLS

OF BURY

ESTABLISHED

OVER 100 YEARS

NONE GENUINE

WITHOUT

LABEL

Prompt Attention To All Post Orders

60 UNION STREET BURY



WEDNESDAY'S

"Bury Times"

FOR FULL REPORTS

AND COMMENTS ON

ALL BURY FOOTBALL

CLUB MATCHES

Also Special Reports of

all other local Sporting

Events and General News

Club Gossip—Continued.

That is the reason why, for instance, foremost players missed being chosen when they had no real rivals, in some matches against Ireland and Wales, during the periods they played regularly against Scotland. The great Stephen Bloomer and William Bassett, to give but two examples, had more "Scottish" caps than Welsh or Irish.

The great bulk of those whose names appear in the army of the "capped" never played against Scotland, in fact, and had the present practice then been in vogue, the great probability is that few of them would have even this title to fame to-day.

After all, the circle from which the men qualified to represent England in the prime match of the year must necessarily be limited, or comparatively so, and it is desirable, in the interest of the spreading of honours, that the policy of relying upon a sort of recognised fixed team has its very serious objections.

One could have understood it more had it been justified by results. But the rather dismal record of England for years in representative football hardly justified one in putting any

faith in the idea. Results could not have been much worse had the team construction been on a wider basis. What counts in the long run is ability, not long association, although that, of course, helps.

\* \* \*

E.S., Ramsbottom.—We are only too pleased to answer any query sent us through these columns, but on this occasion we beg to be excused answering your question. Footballers, like women, are very tender about their ages. That is quite understandable, we think you will agree, for immediately he leaves the twenties behind him, the public begins to think of him as a "has been," a "back number," and to criticise him from that plane, no matter what his form may be. This is one reason we do not disclose players' ages. Sorry.

NORTHERN MID-WEEK LEAGUE

	P.	W.	L.	D.	F.	A.	P.
Preston N.E. ...	5	5	0	0	20	4	10
Blackpool ...	6	4	1	1	22	13	9
Bury ...	5	2	1	2	12	13	6
Burnley ...	5	2	3	0	13	11	4
Blackburn R. ...	5	1	2	2	11	15	4
Liverpool ...	5	1	3	1	7	13	3
Southport ...	5	1	3	1	10	15	3
Oldham Ath. ...	4	0	3	1	5	14	1

Central League - Saturday Next at 2-30

BURY v. WEST BROMWICH ALBION

WEST LANCASHIRE LEAGUE.

	P.	W.	L.	D.	F.	A.	P.
Bolton Wan. ...	13	10	2	1	44	14	21
Astley Bridge ...	11	7	3	1	32	16	15
Blackpool ...	10	7	3	0	39	18	14
Hindsford ...	10	6	3	1	28	25	13
Netherfield ...	7	6	1	0	35	11	12
Burnley ...	8	6	2	0	21	17	12
Whittingham ...	11	5	4	2	30	22	12
Lancaster C.M.H. ...	10	5	4	1	24	19	11
Denton United ...	10	4	5	1	28	22	9
Blackburn R. ...	9	4	5	0	18	29	8
Liverpool ...	11	4	7	0	16	26	8
Bury ...	7	3	3	1	25	27	7
Chorley ...	10	2	6	2	20	30	6
Lancaster City ...	10	1	6	3	19	28	5
Darwen ...	11	2	8	1	13	46	5
Latham ...	10	2	8	0	10	30	4

GOAL SCORERS.

1st Team.	2nd Team.
Livingstone ... 5	Graham ... 7
Davies (G.) ... 3	Davies (G.) ... 4
Ormandy ... 3	Davies (J.) ... 4
Kilshaw ... 2	Halton ... 2
Acqueroff ... 2	Wild ... 2
Jones ... 2	Windle ... 2
Hulbert ... 1	Bargh ... 1
Opponent ... 1	Hulbert ... 1
	Livingstone ... 1

AUTY

BROTHERS

Motor Engineers

PETROL, OILS AND SPARES

REPAIRS TO ANY MAKE OF CAR

Expert Service

◆

FINEST FLEET OF

Motor Coaches

IN THIS DISTRICT

TOURS EVERY WEEK

IN SUMMER

to all parts of Britain

PRIVATE PARTY TOURS

catered for

AUSTIN CARS

PRIVATELY LICENSED

FOR HIRE, ANYTIME, ANYWHERE

Call, write, or phone

MILLETT ST. BURY BRIDGE

BURY

Tel. 957

■ STYLE

■ QUALITY

■ SERVICE

IN

MEN'S WEAR

SAM

FLETCHER

42, Haymarket St.,

BURY

TEL. 1032

# JAMES GREGSON AND ————— SONS

Fernhill Motors, Bury  
are

**NOW BOOKING**

with their

**SALOON COACHES**

for Season 1938-39

20, 26, 32 Seater Coaches for

**FOOTBALL MATCHES**

Austin Private Car for Weddings

Apply —————

**24, HARDMAN ST. : FERNHILL**

Phone 887 Bury

# Refreshments

TEA CIGARETTES  
COFFEE CHOCOLATES  
PIES MINERALS, &c.

Obtainable at

**5 BARS**

ON STANDS, ENCLOSURE  
AND GROUND.

Provided by

**ANNIE CHADWICK**  
CROSTONS ROAD ELTON

Telephone: Tottington 10.  
Established over 25 Years.

# F. BOOTH Concrete & Asphalt Contractor : :

Specialist in  
ROCK ASPHALT FLOORS AND  
FLAT ROOFS, CONCRETE AND  
TAR MAC FOR SCHOOL YARDS,  
TENNIS COURTS, ROADS AND  
PATHWAYS.

COMPOSITION FLOORING IN  
VARIOUS COLOURS.

Enquiries Solicited.

**Leeman's Hill,**  
TOTTINGTON, Nr. Bury

# T. Tomlinson

A.M. Int. B.E.

Registered Electrical  
Refrigeration and  
Radio Engineer and  
Contractor

# KELVINATOR DEPOT

AGENTS FOR  
Cossor, Ultra, Ekco, Etc.  
Radio & Hot-Point Appliances  
Supreme Washers

H.P. Terms Arranged.

Note the Address :

227, THE ROCK  
BURY TELS. } DAY - 441  
NIGHT 1599



From 2/3 to £12/0/0

# H. W. SLY, Ltd., JEWELLERS & SILVERSMITHS

We specialise in Sport's Prizes  
and Presentation Ware.

ONE OF THE FINEST STOCKS IN  
LANCASHIRE.

NO FINER VALUE OBTAINABLE.

**2 and 4, Haymarket Street : Bury**



# GEORGE FREDK. BRADSHAW.

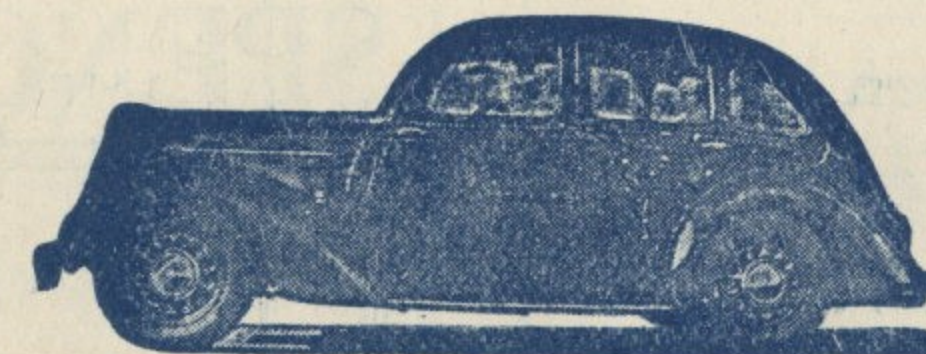
Though one of our newest members,  
George Bradshaw has won the admira-  
tion of our supporters in very quick  
time, and since his introduction be-  
neath the bar on September 3rd has  
kept goal for us without a break.

Though only 5-ft. 8½-in. in stature,  
Bradshaw overcomes this handicap by  
his quickness and agility.

Born at Southport, he was trans-  
ferred on May 30th, 1938, from Don-  
caster Rovers, after having seen service  
with the Arsenal. Weight 10-st. 0-lb.

# STANDARD CARS

From  
£149/0/0



Cash or  
Easy  
Payments

SOLE AGENT

**T. DOBSON,** BURY BRIDGE MILLETT ST. GARAGE.

Tel. 294

# LEM BEECH

IS THE OFFICIAL BURY  
AGENT FOR

## WOLSELEY CARS

Before renewing your old car you must inspect the New Wolseley. Any trial, anywhere, without obligation. Hire terms arranged to suit you.

If you don't want a car of your own, try an Outing in our

## LUXURY COACHES

## THEATRE GARAGE BURY

TEL. 687 & 688.

# H. Halstead

Limited

Provision Dealers,

Bury & Whitefield

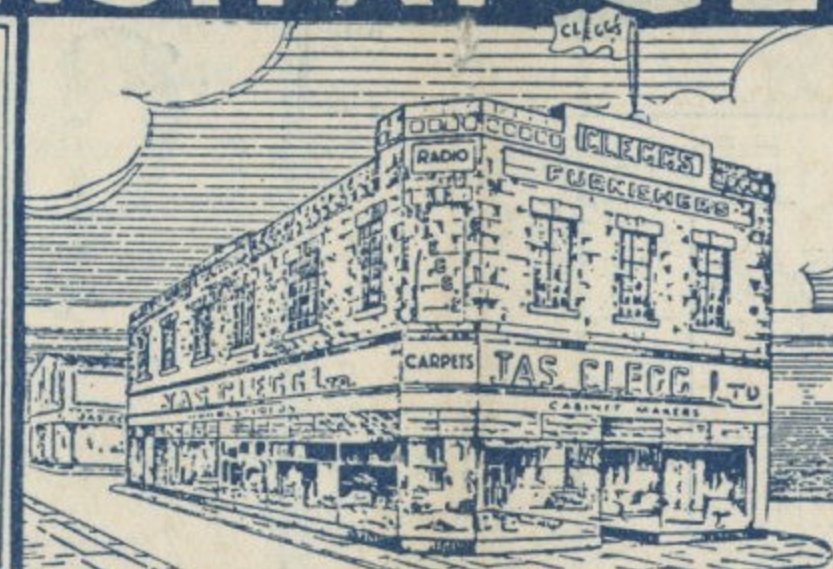
Bacon  
Cheese  
Hams  
Butter

Smoked Bacon Smoked in Perfect Conditions in Private Smoke-house.

## FURNISH AT CLEGG'S

40 MODERN  
SHOWROOMS

WALK THROUGH  
AT  
YOUR LEISURE



LARGEST SELECTION  
IN DISTRICT

THE EASIEST  
OF  
TERMS ARRANGED

HAYMARKET ST. BURY THE ROCK

## BURY.

COLOURS—White Shirts with Navy Collars and Blue Knickers.

RIGHT

1  
BRADSHAW

LEFT

2  
GORMAN

3  
GEMMELL

4  
JONES

5  
MATTHEWSON

6  
WHITFIELD

7  
KILSHAW

8  
BARGH

9  
DAVIES (G.)

10  
LIVINGSTONE

11  
ORMANDY

Referee—E. CARNWELL  
(Lichfield).



Linesmen:  
C. E. TAYLOR (Maghull),  
Red Flag.

W. PRESCOTT (Southport),  
Blue Flag.

12  
STEPHENSON

13  
CONNELLY

14  
BILLINGTON

15  
REDFERN

16  
CLARK

17  
LOUGHRAN

18  
NELSON

19  
FINLAYSON

20  
DUNSMORE

21  
SMITH

LEFT

22  
COEN

RIGHT

## LUTON TOWN.

COLOURS—Red Shirts and White Knickers.

## SPENCER & CLARKE LTD.

Joiners, Builders and Contractors

PUBLIC MORTAR MILL

Dealers in all Building Materials.

Telephone  
Telegrams } 836

ELTON SAW MILLS -- BURY  
LANCS.

## RAGGETT'S

Nourishing  
STOUT

The  
FINEST Stout  
procurable  
DELIGHTFUL  
REFRESHING  
& SUSTAINING

Constitutes a Real  
Tonic & Restorative

Sold at all Clubs and Free Houses  
or supplied direct by

## PERHAM & Co.

12 Market Street, Bury

Wholesale Bottling  
Agents for  
Bury and District.

'Phone: BURY 70.

We give  
the —

## Best Results

in

GROCERIES and  
PROVISIONS.

## Waterworth's

LTD.

(THE GROCERS),

MARKET HALL

Also

63. Walmersley Road,  
BURY

# SCOREBOARD

Saturday, November 19th.

	CLUBS	Half Time	Final		CLUBS	Half Time	Final
A	West Ham United ... .. Plymouth Argyle ... ..			L	Derby County ... .. Bolton Wanderers ... ..		
B	Grimsby Town ... .. Charlton Athletic ... ..			M	Tranmere Rovers ... .. Sheffield United ... ..		
C	Everton ... .. Manchester United ... ..			N	Aston Villa ... .. Chelsea ... ..		
D	Huddersfield Town ... .. Birmingham ... ..			P	Portsmouth ... .. Middlesbrough ... ..		
E	Bradford ... .. Southampton ... ..			R	Sunderland ... .. Preston N.E. ... ..		
F	Millwall ... .. Notts Forest ... ..			S	Chesterfield ... .. Burnley ... ..		
G	Swansea Town ... .. Tottenham Hotspur ... ..			T	Fulham ... .. West Bromwich A. ... ..		
H	Wolverhampton Wan. ... Stoke City ... ..			U	Blackburn Rovers ... .. Newcastle United ... ..		
J	Manchester City ... .. Coventry City ... ..			V	Brentford ... .. Liverpool ... ..		
K	Blackpool ... .. Leeds United ... ..			W	Sheffield Wed. ... .. Norwich City ... ..		

## LA SCALA PICTURE HOUSE

SPRING STREET, BURY.

Tel. 140.

General Manager: J. MATHER.

Tel. 140

TO-NIGHT (SATURDAY):

"PASSPORT TO FAME."

ALL NEXT WEEK:

TYRONE POWER, DON AMECHE, and ALICE FAY in

### "IN OLD CHICAGO"

## GOOD OUTFITTING

Can always  
be had at

### Bradshaws Ltd.

7-9, PRINCESS ST.,  
122, THE ROCK

Where QUALITY and PRICE AGREE

## JAMES LAWLESS

Wholesale & Retail Iron-  
monger, Mill Furnisher

TOOLS for ALL TRADES

Market Hall · Bury

Marble Chimney Pieces  
Wood Mantels Stoves  
Grates Cooking Ranges

Range Show Rooms

22 Princess Street, Bury

Telegrams: "Lawless, Ironmonger, Bury."  
Telephone No. 480.

## CROMPTON'S 'FLU POWDERS

### Cure Colds in a Night

2d. Each

3 for 5½d.

Obtainable Everywhere

**CROMPTON AND PRESTON LIMITED, Chemists**  
50 CROSTONS ROAD, BURY  
Telephone 1230 Bury

## OUR PRIZE SCHEME.

In conjunction with the Proprietors of several Picture Theatres of the Town, we are enabled to present an interesting scheme in connection with our Programme.

Each copy will bear a number on the BACK page, and sixteen numbers will be selected at every first team game, and eight at every second team game.

These numbers will be exhibited on a Board or, alternatively, announced through the Loud Speaker, during the interval at each match, and a programme bearing any number so announced will be **EXCHANGED** for a ticket which entitles the holder to a free seat to the (1) Art, (2) Empire, (3) Hippodrome, (4) La Scala, (5) Odeon, (6) Regal, (7) Star, and (8) Theatre Royal, on presentation at the office after the game.

### WINNERS.

786 F. Taylor, 371 Bolton Road.  
839 F. Davenport, 14 Dales Ave., W'field.  
1007 H. Kenyon, 23 Wild St., Heywood.  
1042 R. Dean, 103 Tottington Road.  
1078 G. Chester, 68 Ivy Road.  
1125 H. Scholes, 315 Bolton Road.

1143 Mrs. Duckworth, 15 Greengate Lane,  
Prestwich.  
1187 F. Barlow, 96 Gigg Lane.  
1236 G. Partington, 1 Ringley Rd., W'field  
1247 H. Holdcroft, 43 Woodley Ave., Radc.

## Henry Loofe

For Better Grade :  
Ladies' & Gents' Tailoring  
At Money-Saving Prices.

### For Men

Smartest Cloths  
for Suits and  
Overcoats to  
Measure  
Fit and Quality  
Guaranteed

### For Ladies

Newest Cloths  
for Costumes &  
Coats  
to Measure or  
Ready-to-Wear  
See our Gowns

179, THE ROCK : BURY

(opposite St. John's Church) Phone 65

## JOPSON'S GRAND CAFE

(Opposite Bolton Street Station.)

Luncheons or a La Carte Grills,  
Teas, Suppers, a Speciality.

After or before the match or at any  
other time DINE in pleasant sur-  
roundings at our Cafe.

Tel. No.: BURY 955.

BURY DISTRICT CO-OPERATIVE SOCIETY LTD.

# CAFE MARKET ST. (Opposite Bus Shelter)

After the Match visit  
The Cafe for the Best Meal  
in the Town

**SPECIAL TEAS**  
from 9d.

TRY OUR NOTED PIES

SATISFACTION  
QUICK SERVICE  
AND  
FIRST CLASS QUALITY  
AT  
REASONABLE PRICES

TELEPHONE BURY 1310

## PUBLIC ADDRESS EQUIPMENT

Placed at the Disposal of  
BURY FOOTBALL CLUB

by

**The English & Scottish Joint  
Co-operative Wholesale Society**

the largest Growers, Blenders, Packers,  
and Distributors of Teas in the World.

**Co-op. Tea—Drink it Always**

## Carriage and Motor Dept. SILVER STREET

If you require a **Taxi** to or from the Football  
Match, or for any other journey please ring up

**BURY 77**

or order at any of the Society's branches

**PROMPT ATTENTION TO ALL CALLS**

**OUR FLEET OF AUSTIN LIMOUSINE CARS  
IS THE MOST UP-TO-DATE IN THE DISTRICT**

Enquiries will be welcomed

Satisfaction guaranteed

# L M S

## Bargain Travel on Sundays.

**DAY TICKETS at SINGLE FARE for RETURN JOURNEY**

**BETWEEN ANY TWO STATIONS IN ENGLAND AND  
WALES—BY ANY TRAIN ON THE DAY OF ISSUE.**

**Minimum Fares : 1st class 3/9, 3rd class 2/6**

Apply at Stations for full details.

## FIXTURES.

FIRST TEAM.					1937-8 1938-9					RESERVE TEAM 1937-8 1938-9					
Aug.	27—	Sheffield Wednesday...	...a	0	2	0	2	Aug.	27—	Sheffield Wednesday...	...h	1	4	1	2
	29—	Fulham ... ..	...h	4	2	0	2		29—	Blackpool ... ..	...a	0	2	1	1
Sept.	3—	Southampton ... ..	...h	2	1	5	2	Sept.	3—	Bolton Wanderers...	...a	1	3	0	1
"	5—	Millwall ... ..	...a	—	—	0	0	"	10—	Huddersfield Town ...	...a	2	0	1	3
"	10—	West Ham United ...	...h	4	3	1	1	"	12—	Derby County ... ..	...h	1	4	2	5
"	17—	Tranmere Rovers ...	...a	—	—	0	3	"	17—	Everton ... ..	...h	0	1	1	2
"	24—	Chesterfield ... ..	...h	4	0	3	1	"	24—	Chesterfield ... ..	...a	1	1	1	4
Oct.	1—	Swansea Town ... ..	...a	0	1	3	3	Oct.	1—	Wolverhampton Wan.	...h	6	0	2	2
"	8—	Bradford ... ..	...h	5	1	0	1	"	8—	Aston Villa ... ..	...a	2	5	2	5
"	15—	Coventry City ... ..	...a	2	0	0	0	"	15—	Sheffield United ...	...h	2	4	3	2
"	22—	Nottingham Forest ...	...h	2	0	2	1	"	22—	Burnley ... ..	...a	2	0	1	3
"	29—	Burnley ... ..	...a	0	2	1	0	"	29—	Preston North End ...	...h	2	0	4	3
Nov.	5—	West Bromwich A. ...	...h	—	—	3	3	Nov.	5—	Stoke City ... ..	...a	1	0	2	1
"	12—	Norwich City ... ..	...a	2	1	1	3	"	12—	Manchester United ...	...h	2	1	3	2
"	19—	Luton Town ... ..	...h	3	4			"	19—	Birmingham ... ..	...a	1	2		
"	26—	Plymouth Argyle ...	...a	1	2			"	26—	West Bromwich A. ...	...h	3	0		
Dec.	3—	Sheffield United ... ..	...h	1	0			Dec.	3—	Newcastle United ...	...a	2	0		
"	10—	Newcastle United ...	...a	0	1			"	10—	Liverpool ... ..	...h	2	2		
"	17—	Tottenham Hotspur ...	...h	1	2			"	17—	Leeds United ... ..	...a	5	1		
"	24—	Sheffield Wednesday ...	...h	0	0			"	24—	Sheffield Wednesday ...	...a	1	0		
"	26—	Blackburn Rovers ...	...a	1	2			"	26—	Blackburn Rovers ...	...h	2	4		
"	27—	Blackburn Rovers ...	...h	2	1			"	27—	Blackburn Rovers ...	...a	1	6		
"	31—	Southampton ... ..	...a	1	4			"	31—	Bolton Wanderers ...	...h	0	3		
Jan.	2—	Millwall ... ..	...h	—	—			Jan.	14—	Huddersfield Town ...	...h	4	1		
"	14—	West Ham United ...	...a	1	3			"	21—	Everton ... ..	...a	1	6		
"	21—	Tranmere Rovers ...	...h					"	28—	Chesterfield ... ..	...h	2	3		
"	28—	Chesterfield ... ..	...a	2	1			Feb.	4—	Wolverhampton Wan.	...a	2	2		
Feb.	4—	Swansea Town ... ..	...h	0	0			"	11—	Aston Villa ... ..	...h	1	2		
"	11—	Bradford ... ..	...a	1	1			"	18—	Sheffield United ...	...a	0	4		
"	18—	Coventry City ... ..	...h	0	2			"	25—	Burnley ... ..	...h	5	0		
"	25—	Nottingham Forest ...	...a	0	1			Mar.	4—	Preston North End ...	...a	2	0		
Mar.	4—	Burnley ... ..	...h	4	0			"	11—	Stoke City ... ..	...h	5	2		
"	11—	West Bromwich A. ...	...a	—	—			"	18—	Manchester United ...	...a	0	3		
"	18—	Norwich City ... ..	...h	3	1			"	25—	Birmingham ... ..	...h	3	1		
"	25—	Luton Town ... ..	...a	1	0			April	1—	West Bromwich A. ...	...a	1	3		
April	1—	Plymouth A. ... ..	...h	2	0			"	7—	Manchester City ... ..	...a	1	1		
"	7—	Manchester City ... ..	...h	—	—			"	8—	Newcastle United ...	...h	1	2		
"	8—	Sheffield United ...	...a	1	2			"	10—	Manchester City ...	...h	1	0		
"	10—	Manchester City ... ..	...a	—	—			"	15—	Liverpool ... ..	...a	3	0		
"	15—	Newcastle United...	...h	1	1			"	22—	Leeds United ... ..	...h	0	4		
"	22—	Tottenham Hotspur ...	...a	3	1			"	29—	Blackpool ... ..	...h	1	1		
"	29—	Fulham ... ..	...a	0	4			May	6—	Derby County ... ..	...a	1	3		

## LEAGUE DIVISION II.

	P.	W.	L.	D.	F.	A.	P.
Newcastle U. ...	15	9	4	2	29	16	20
Fulham ...	15	7	3	5	24	15	19
West Brom. A. ...	15	9	5	1	40	29	19
Blackburn R. ...	13	8	5	2	32	24	18
Sheffield U. ...	14	6	3	5	21	15	17
Tottenham H. ...	14	6	4	4	24	22	16
Coventry City ...	14	6	4	4	17	16	16
Millwall ...	14	6	5	3	26	15	15
Plymouth Arg. ...	14	6	5	3	20	17	15
Bradford ...	14	5	4	5	24	25	15
Luton Town ...	14	6	5	3	21	23	15
West Ham U. ...	15	6	6	3	32	23	15
Burnley ...	15	5	5	5	19	23	15
Sheffield Wed. ...	14	5	5	4	25	26	14
Bury ...	14	4	5	5	19	22	13
Manchester C. ...	14	5	7	2	29	33	12
Southampton ...	14	5	7	2	21	26	12
Chesterfield ...	14	5	7	2	14	20	12
Norwich City ...	14	5	9	0	19	26	10
Notts Forest ...	14	3	7	4	15	24	10
Swansea Town ...	14	1	6	7	16	32	9
Tranmere R. ...	14	3	10	1	17	32	7

## CENTRAL LEAGUE.

	P.	W.	L.	D.	F.	A.	P.
Chesterfield ... ..	15	9	2	4	36	19	22
Aston Villa ... ..	14	9	3	2	31	18	20
West Brom. A. ...	15	8	3	4	31	24	20
Wolverhampton..	15	8	4	3	28	16	19
Manchester U. ...	14	8	4	2	34	21	18
Manchester C. ...	14	8	4	2	32	21	18
Everton ... ..	14	8	4	2	24	26	18
Blackpool ... ..	14	4	1	9	17	14	17
Sheffield U. ...	15	6	6	3	27	25	15
Sheffield Wed. ...	14	6	6	2	24	21	14
Derby County ...	15	5	6	4	24	28	14
Huddersfield T... 15	6	7	2	19	23	14	
Birmingham... ..	15	3	5	7	20	27	13
Bolton Wan. ...	13	4	5	4	15	18	12
Liverpool... ..	14	4	6	4	17	29	12
Stoke City ... ..	15	4	7	4	19	20	12
Burnley ... ..	14	4	8	2	20	24	10
Preston N.E. ...	14	3	7	4	18	22	10
Blackburn R. ...	14	5	9	0	25	35	10
<b>Bury</b> ... ..	14	4	8	2	24	36	10
Newcastle U. ...	15	3	8	4	31	36	10
Leeds United ...	16	2	8	6	23	36	10

## ALL ABOUT THEM.

### GOALKEEPERS.

	Height. ft. in.	Weight. st. lb.	1st Team. Appearances.	Reserves.
Fairhurst, Wm. G., St. Helens ...	5 11½	13 11	2	9
Bradshaw, Geo. F., Southport ...	5 8½	10 0	12	2
Slaven, John, Renfrew ...	5 10	11 0	—	3

### FULL-BACKS.

Gemmell, Jas., Sunderland ...	6 1	11 7	14	—
Bell, Andrew, Buckhaven ...	5 9	11 7	—	1
Gorman, Wm. C., Sligo... ..	5 8½	10 7	14	—
Aston, Walter V., Coseley ...	5 9½	11 7	—	12
Hart, John L., Ashton-in-Makerfield	5 10	11 0	—	14
Henderson, D., Bellshill ...	5 7	9 4	—	5

### HALF-BACKS.

Jones, David, Whitwell ...	5 9	10 12	14	—
Matthewson, Geo., Gateshead ...	6 1½	12 0	14	—
Whitfield, Wm., Bewick Main ...	5 9½	10 12	14	—
Watson, John F., Hamilton ...	6 1	12 0	—	12
McGowan, John, Westerhope ...	6 2	12 8	—	1
McCormack, Wm., Kilmarnock ...	5 9	11 0	—	—
Slater, Jack, Heywood ...	5 11	10 3	—	3

### FORWARDS.

Ormandy, Jack, Liverpool ...	5 5½	9 10	10	2
Graham, Wm., Hetton-le-Hole ...	5 8	10 9	3	11
Bargh, Geo. W., Barton ...	5 6¾	9 7	12	2
Hulbert, Robert, Westhoughton ...	5 6	10 0	3	9
Acquiroff, Jack, Chelsea ...	5 9½	10 7	9	3
Wild, James, Bury... ..	5 8½	10 2	—	3
Davies, Geo., Earlstown... ..	5 8	10 2	9	5
Kilshaw, Edmund A., Prescott ...	5 5	10 0	14	—
Halton, Reg. L., Leek ...	6 0	10 10	—	11
Hartley, Thos., Gateshead ...	5 8½	11 1	—	4
Davies, Jack, Earlstown... ..	5 8	12 0	—	6
Roberts, Fred, Rhyl ...	5 8	10 7	—	10
Livingstone, A., Pencaitland ...	5 8	11 0	10	4
Dougal, Peter, Denny ...	5 8	11 7	—	7
Windle, Chas., Barnsley ...	5 8	10 10	—	8

Book your Outings with

## WARBURTON BROS.

4, Market Street, TOTTINGTON.

26 and 32-SEATER RADIO COACHES  
equipped with Central Heating for Winter Season.

Football Matches, Concerts and Theatre Parties catered for

TEL. 62 TOTTINGTON.

## JAMES BUNN

Proprietor: W. H. PICKEN.

Saddler and Leather Goods Dealer

FOOTBALL OUTFITS

DOG REQUISITES

CASES AND BAGS

TENNIS RACKETS

REPAIRS

35 Bolton Street  
BURY

Follow the Bury Team.

THEY EAT "MUNCH"

THE NUTRITIOUS CEREAL  
FOOD IN BISCUIT FORM

To Keep Them Fit.

If your own grocer does not keep it  
see

Shaw & Starkey  
MARKET HALL BURY

Tel. 532

SOLE AGENTS FOR LANCS.

TEL. No. 797.

HEAP & SON  
LIMITED.

Where  
Fashion  
Goods  
are a  
Family  
Tradition.

Bury's  
Biggest  
Fashion  
Store.

CALL IN AFTER THE MATCH  
AND HAVE A LOOK ROUND.

The Rock, Bury

Rothwell & Co.

(BURY) LTD.

Printers  
Bookbinders  
Stationers

33, UNION SQUARE,  
BURY. Tel. 263.

Headquarters—

4380

BURY FOOTBALL CLUB.  
BURY AMATEUR FOOTBALL CLUB.

A.A.  
R.A.C.  
C.T.C.

## DERBY HOTEL

Centre of Town. Contains Hand- **BURY**  
some Commercial, Coffee, Smoke  
and Private Rooms and well-appointed Bedrooms  
Popular Vaults :: Garage.

**FIRST-CLASS  
COMMERCIAL**

**LUNCHEONS  
TEAS, GRILLS**

**FOOTBALL TEAS.**

Telephone 230 (Office)  
" 274 (Box No.)

# FIREPLACES !

## JOSEPH DOWNHAM LTD.,

Have the Largest and Choicest stock in  
the district of "Bungalo" Ranges,  
Grates, Mantels and Tile Surrounds.

AGENT for "TRIPLEX" & "MERIDIAN" RANGES

Inspect our extensive Showrooms :

**The Rock & Union Street**

Tel. 2 lines 1080-1081 **BURY**