

LUTON TOWN FOOTBALL AND ATHLETIC CO. LTD.

OFFICIAL
JOURNAL

PRICE 2d



League—Division II

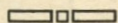
November 12th, 1938.

LUTON TOWN v. WEST HAM UNITED

“TRUE-FORM”
THE FINEST FOOTWEAR
IN THE TOWN



BUY DIRECT FROM THE MAKERS



LOCAL BRANCH:

32, GEORGE STREET

Head Office and Factories: NORTHAMPTON

*Insist upon the
Building Materials for
your new house coming from*

POWDRILL'S

BUILDERS' MERCHANTS
COAL and COKE MERCHANTS
BRICK MANUFACTURERS
SAND & GRAVEL QUARRY OWNERS

GEORGE POWDRILL & SON LTD., 1, 3 & 5, HITCHIN ROAD, LUTON
TELEPHONE 2073 (2 Lines)

HELEY'S CAFE

MILL STREET

NEXT TO PALACE THEATRE, LUTON

DINNERS
11.30 — 2.30

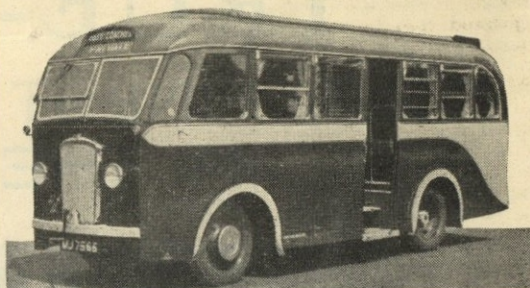
TEAS
3.30 — 6

SUPPERS
6 — 12

SPECIAL
FOOTBALL TEAS

FISH AND CHIPS
SAUSAGE AND MASH
— ETC. —

PROPRIETOR: A. S. HELEY



COOPERS COSY COACHES

F. J. COOPER LTD.

20, 26 and 30 Seater
Coaches for private hire,
also stream lined 7 Seater
Car for weddings and
long distances

OXEN ROAD GARAGE

'Phone LUTON 731

LUTON
FOOTBALL AND



TOWN
ATHLETIC CO.

Telephone No. 3151-2.

LIMITED.

President: Alderman Harry Arnold, C.A., J.P.

Vice-President: The Right Honourable E. Leslie Burgin, M.P., P.C., D.L.I.,
(His Majesty's Minister of Transport).

Directors:

Chairman: Chas. Jeyes, Esq., C.C.

E. Hugh Woods, Esq. (Vice-Chairman), Frank J. Andrews, Esq., Councillor Horace S. Hewson,
Percival G. Mitchell, Esq., Henry Richardson, Esq., C.C., Philip W. Wright, Esq.

Team Manager: Mr. Neil McBain.

Secretary: Mr. A. E. Wickson.

Honorary Medical Officer: E. J. Crarer, Esq., M.B., Ch.B.

Honorary Solicitors: Messrs Machin & Co., 17-19, George Street West, Luton.

CLUB NOTES by "Hatter"

I THINK we were all delighted to hear the result from Tranmere last Saturday, especially more so when it was learned that Hugh Billington had registered two of the goals. Hugh has had a meteoric rise in football circles since his signature was obtained to professional forms but the ex-Waterloos' player has fully justified the confidence placed in him. So far this season he has registered 17 goals in 17 matches, a fine average to obtain, and not a little of his success is due to his brilliant understanding with Bill Redfern. Now that both are wearing the first team colours we are hoping to witness a continuance of their ideal partnership that was so predominant a feature in the Combination games. Mention of Bill Redfern gives me great pleasure to congratulate him on his selection for the London Combination team against the Central League at Highbury, on Monday next. Any supporter who finds himself with a spare half day then, would not be wasting his time having a look at this match for it is very, very slightly below first class standard.

The "Stiffs" too, added to their victories at the expense of Clapton Orient Reserves, but I do think that their margin of five clear goals rather flattered them. The 'O's' played some brilliant football at times, but their finishing was atrocious. We on the other hand accepted our chances, and after all it is the team that does this that wins matches. Young Doug. Gardiner made a highly successful debut and often earned rounds of applause for brilliant tackling and use of the ball. On the other hand Robson Campbell seemed troubled with the sun during the first half, but improved after a change of ends. As a line the forwards did extremely well, and all except "Hooky" Laing had a goal to his credit. Today, they have a very stiff hurdle to overcome at Portsmouth, but if they go about their job as we have seen them and

know they can do, then success should follow their visit.

The "A" team also retained their unbeaten certificate, but were sorely tested by Bedford Town, winning by two goals to one. An injury to Gordon Dreyer and with Jim Wale falling sick late on Friday, caused a re-arrangement of the team, and George Martin was pressed into service, although himself far from well. During the first half they were definitely superior and led at the interval by a solitary goal obtained by Charlie Ferguson, who also obtained the winning point during the second half from the centre forward position, Ted Duggan having become dazed through severe buffetings, and gone out to the extreme wing, thus nullifying the equaliser obtained by George Turner.

Today we renew acquaintances with West Ham United, and accordingly extend a cordial welcome to them. After an inconspicuous start the "Hammers" have welded into a fine combination, and have some great performances to their credit. Manchester City were beaten by four goals to two at Manor Road, whilst Bury and Notts Forest were forced to yield one point on their own enclosures. Last season the meetings between the two clubs both ended in drawn games, four goals being shared at Luton, whilst neither team reached the net at Upton Park.

Supporters are earnestly requested not to invade the playing pitch at any time before, during or after the match. The reason for this is obvious and the policemen and officials on duty have orders to eject any persons infringing this instruction.

ALBUMS

At the request of a number of supporters we have had prepared an Album to contain the Art Plates of our Football Personalities, which we present with this programme at League II matches.

Will any supporters who desire one of these Albums please place their orders at the office, 70-72, Kenilworth Road, Luton. Price 1/6 each.

DO NOT MISS OBTAINING A COPY OF THE PROGRAMME ON SATURDAY, NOVEMBER 26th. It will contain a full sized autographed Art Plate of Fred Roberts.

Previous issues—August 31st, J. Nelson; September 3rd, H. W. Dolman; September 24th, G. Stephenson; October 8th, Tom Smith; October 15th, Joe Coen; October 29th, Bill Redfern; November 12th, Jock Finlayson. Any supporter desirous of purchasing a copy should make application at the office, 70-72, Kenilworth Road, Luton. Price 2d.

PURCHASE A PROGRAMME AND HELP THE FOOTBALL CLUB.

There were once two Directors of Goheim,
Who sacked their Manager named Spoteim.
He raved, "Her' Heil!
You blighters I'll keil!"
And took out his pistol and shoteim.

He was sent to the court at Witheim
And charged before Gott Ritheim,
But all he got
From old Judge Gott
Was, "That's the stuff to giveim."

At last he was sent to the Fuheir
The outcome was even more grueir,
He said, "Draw near,"
Whispered in ear,
And now those Directors are feweir.

The end of those Directors of Goheim
Will no doubt some people shokeim,
For standing in a line
On a bridge o'er the Rhine,
He over the parapet then shoteim.
And the Manager took charge at Goheim
And reversed the order of rotteim,
They soon soared up,
Won League and Cup
Whilst the Directors sank to the botteim.
H.B.

A win over West Ham United
Will make us wholly delighted,
For last year we saw
A home lose or draw
Causes promotion hopes to be blighted.
Right half Finlayson, otherwise Jock,
Is often the visitors' stumbling block,
He provides a treat
With his footwork neat,
While he gives the ball a jolly good sock.

"A" TEAM FIXTURES UNITED COUNTIES LEAGUE Season 1938-9

Matches will be played at Ford End Road, Bedford

				F. A.
Sat., Aug. 27	Wellingborough	A	3 1
Sat., Sept. 3	Stewart and Lloyds	H	0 0
Sat., " 17	Wisbech	A	2 2
Mon., " 26	Rushden	A	1 1
Sat., Oct. 8	Spalding	H	4 1
Sat., " 22	Biggleswade (Beds. Invit. Cup)	...	A	4 1
Sat., " 29	All Blacks (Friendly)	...	H	10 2
Sat., Nov. 5	Bedford	A	2 1
Sat., " 19	Biggleswade	A	
Sat., " 26	St. Neots	H	
Sat., Dec. 3	Wellingborough	A	
Sat., " 24	Rushden	H	
Mon., " 26	St. Neots	A	
Sat., " 31	Stewart and Lloyds	A	
Sat., Jan. 7	Biggleswade	H	
Sat., " 21	Desborough	A	
Sat., Feb. 4	Kettering	A	
Sat., " 11	Stamford	H	
Sat., " 18	Wisbech	H	
Wed., Mar. 1	West Ham "A" (Friendly)	...	H	
Sat., " 4	Bedford	H	
Sat., " 18	Wellingborough	H	
Sat., April 1	Kettering	H	
Fri., " 7	Stamford	A	
Sat., " 8	Spalding	A	
Mon., " 10	Luton League (Friendly)	...	H	
Sat., " 15	Desborough	H	
Sat., " 29	Northfleet United	H	
Sat., May 6	Northfleet United	A	

Next Match, Saturday, November 19th, 1938.

LONDON COMBINATION

LUTON TOWN RES. v. WEST HAM UNITED RES.

Kick - Off 2.30 p.m.

ADMISSION—Centre Stand 1/6

Stand and Enclosure 1/- Ladies and Boys 6d. : Ground 6d. Boys 3d.

(ALL PRICES INCLUDE ENTERTAINMENT TAX)

ATTENDANCE BAROMETER

1937	1938		1937	1938
			£ s. d.	£ s. d.
Aug. 28	Aug. 27	Brighton & Hove Reserves ...	7346	6356
		Southend United Reserves ...	167 0 3	144 15 3
Sept. 1	Aug. 31	Newcastle United ...	25349	17689
		Aston Villa ...	1299 14 4	811 11 4
Sept. 4	Sept. 3	Norwich City ...	20610	16547
		Manchester United ...	994 1 2	747 0 6
Sept. 8	Sept. 7	Tottenham Hotspur Reserves ...		5955
		Clapton Orient Reserves ...	4823	131 1 7
Sept. 11	Sept. 10	Watford Reserves ...		7256
		Chelsea Reserves ...	7725	163 5 10
Sept. 18	Sept. 17	Southend Reserves ...		5826
		Tottenham Hotspur ...	23788	126 10 7
Sept. 22		Leicester City Reserves ...	3626	
	Sept. 24	Sheffield United ...		17436
Sept. 25		Queens Park Rangers Reserves ...	6558	808 7 6
		Chelsea Reserves ...	142 1 11	7831
Oct. 2	Oct. 1	Bury ...	17650	182 7 4
	Oct. 5	Leicester City Reserves ...		1300
Oct. 9	Oct. 8	Tottenham Hotspur ...		21061
		Brighton and Hove Reserves ...	5236	33 14 8
Oct. 16	Oct. 15	Bradford ...		1067 7 8
		Swansea Town Reserves ...	6592	14955
Oct. 23	Oct. 22	Brentford Reserves ...		684 3 8
		West Ham United ...	17757	6698
Oct. 30	Oct. 29	Blackburn Rovers ...	897 18 10	151 14 7
		Reading Reserves ...	5571	16819
Nov. 5	Nov. 5	Clapton Orient Reserves ...		782 12 4
		Blackburn Rovers ...	16776	5744
			818 16 6	129 16 4
			169407	7030 15 10
				151473
				5964 17 2

N.B. The attendance figures for both League II and London Combination matches, include the number of Season Tickets issued. The gate receipts are the net amounts received after Entertainment Tax has been deducted.

PLAYER'S APPEARANCES

	League II	London Comb.	Utd. Counties League	F.A. Cup	Other Matches	Total
	App. Goals	App. Goals	App. Goals	App. Goals	App. Goals	App. Goals
Billington, H. J. R. ...	1 2	15 14			1 1	17 17
Burgess, W. W. ...		3				3 1
Campbell, R. ...		7 1	4			11 1
Carroll, J. ...	1	1	1		3	6
Carte, R. ...	2	5	1		4	12
Clark, C. ...	3 3	6 4	4 2			13 9
Coen, J. L. ...	3	14			1	18
Connelly, E. ...	12 6				1	13 6
Dolman, H. W. ...	10		1		2	14
Dreyer, G. ...		10 1			2	12 1
Dunsmore, T. H. ...	11				1	12
Ferguson, C. ...	9 1	1	1 2		2 2	13 5
Finlayson, J. ...	13				1	14
Gager, H. E. ...		16 3	1		1	18 3
Gardiner, D. ...		1	5		3 1	9 1
Goodyear, G. ...			1		1	2
Hogg, F. ...		7	2		4 4	13 4
Kidd, G. I. ...		6			1	7
King, T. P. ...		10	1			11
Laing, J. F. ...		2	5 1		2	9 1
Lewis, J. ...		17			1	18
Loughran, J. ...	13				1	14
Lutterloch, B. R. ...		17			2	19
Mayberry, S. ...		3	5		1	9
Nelson, J. H. ...	13				1	14
Redfern, W. J. ...	4 1	14 11			1 2	19 14
Roberts, F. ...	11	2 2			1 1	14 3
Smith, T. S. ...	13				1	14
Stephenson, G. H. ...	12 1	1 1			1	14 2
Stevens, R. F. ...		15 8	1		1	17 8
Strathie, J. ...		1	5 1		3	9 1
Vinall, E. J. ...	12 5	1 1			1 1	14 7
Wale, J. ...		9	3		2	14
Amateurs and Others	1	2	25 3		8 7	35 11

CENTRE your attention for one moment on these unique examples of easy and straightforward House Purchase terms, and apart from any other advantages, consider what you will save in actual cash. We shall be pleased to furnish full particulars and arrange for your inspection.

£30 Deposit. Eaton Gardens Estate. Close to Vauxhall and Airport and handy to town. S.D. Houses with room for a garage, 3 bedrooms, tiled bathroom with W.C. and basin, 2 reception, tiled and fitted kitchen, H. and C. water, electric light and heating. Repayments 149 per week only. No road or legal charges.

£25 Deposit, Repayments from only 9/4 weekly. Modern S.D. Bungalows and Houses on beautifully situated estate 6 miles from Luton, and 20 minutes cycle ride to Vauxhall. The Houses contain 3 bedrooms, bathroom, kitchen, large sitting room, and have H. and C. water supply, room for garage and large gardens.

SELL & MITCHELL

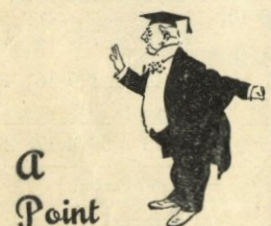
Auctioneers, Land & Estate Agents

7 & 9, PRINCESS STREET, LUTON

'PHONE 2003/4

95, HIGH STREET NORTH, DUNSTABLE

'PHONE 354



A Point to remember!
E. A. ALLEN
the Printer of this Programme

WILL GIVE SERVICE AND SATISFACTION
424, DUNSTABLE ROAD
LUTON
Telephone 1626

To-Day's Half-Time Scores

FIRST LIST

A	BIRMINGHAM	v.	EVERTON
B	BOLTON WAN.	v.	BLACKPOOL
C	CHARLTON A.	v.	DERBY CO'NTY
D	CHELSEA	v.	SUNDERLAND
E	LEEDS UNITED	v.	BRENTFORD
F	LEICESTER C.	v.	PORTSMOUTH
G	LIVERPOOL	v.	ARSENAL
H	MANCH. UN.	v.	WOLVES
K	MIDDLESBRO'	v.	HUDDERSFIELD
L	PRESTON N.E.	v.	GRIMSBY T.
M	STOKE CITY	v.	ASTON VILLA
N	BURNLEY	v.	SWANSEA T.

NOTE—The Letter in the Programme corresponds with the letter on the Board—thus A 0-1 means that the first-named Club has scored 0 and their opponents 1.



Specialities

Paint and Enamel
Manufacturers

"Stuart" Series
Wallpapers

OGDEN & CLEAVER

Stuart Street, LUTON

TELEPHONE 580

LUTON GAS COMPANY

JUST A TURN OF THE TAP
AND GAS GIVES INSTANT
HOT WATER, REAL FIRE-
SIDE COMFORT, CAREFREE
COOKING

Be up-to-date with Gas

Showrooms—GEORGE STREET
and DUNSTABLE ROAD

THE BEST DEFENCE

against

WINTER'S ATTACK

'OXAVIN'
TONIC WINE

Large Bottle 4/6

Medium Bottle 2/6

L. GREENER, Wine Merchant

60, WELLINGTON STREET, LUTON

(Corner of Stuart Street)

H. R. WILLIAMS

REGISTERED
ELECTRICAL CONTRACTOR

and Member of the

Electrical Contractors' Association

17, DURHAM ROAD

LUTON

'PHONE: LUTON 2012

NEWBERY

& CO. (LUTON) LIMITED

32/36, CROMWELL ROAD

LUTON

Builders' Merchants

Ironmongers

Door and Gate Importers

PHONE 294

PRIVATE 511

PHONE 223

EST. 1860

WHITE'S

again supply

LUTON TOWN
FOOTBALL CLUB

WITH THEIR

FOOTBALL
BOOTS

THEY know the Best

H. WHITE (LUTON) LTD.

FOOTWEAR

of every description

MANCHESTER STREET
LUTON

To-Day's Half-Time Scores

SECOND LIST

A	COVENTRY C.	v.	MILLWALL A.
B	NEWCASTLE	v.	FULHAM
C	NORWICH C.	v.	BURY
D	NOTTS. FOR.	v.	BLACKBURN
E	SHEFFIELD UN.	v.	CHESTERFIELD
F	SOUTHAMPTON	v.	MANCH. CITY
G	TOTTENHAM	v.	BRADFORD
H	WEST BROM.	v.	WEDNESDAY
K	BOURNEM'UTH	v.	NEWPORT CO'
L	BRIGHTON & H.	v.	CLAPTON O'
M	BRISTOL ROV.	v.	TORQUAY U.
N	CARDIFF C.	v.	WATFORD

S.J. HAWKINS

STATION WORKS, FLITWICK BEDS.

'PHONE: FLITWICK 253

PNEUMATIC TYRED
TRUCKS, TROLLEYS AND
BARROWS

for all trades

WHOLESALE AND RETAIL

Send for List L101 Post Free

CYCLES & REPAIRS

Get your new machine from

S. A. LEWIS

138, DUNSTABLE ROAD

LUTON

PHONE 807

Terms from

2/-
Weekly

All kinds of
repairs executed
by experienced
workmen

MARES for Caps

Charles
MARES Limited
GEORGE STREET, LUTON
And at St. Albans

TODAY

PALACE THEATRE LUTON

TODAY

THE CRAZY GANG IN "ALF'S BUTTON AFLOAT"

NEXT WEEK (U) NEXT WEEK
GRAGIE FIELDS and VICTOR McLAGLEN in
"WE'RE GOING TO BE RICH"

(A)

Football, Rugby,
Hockey, Badminton,
Table Tennis,
Miniature Billiard
Tables, Dominoes
and all Indoor Games

DART BOARDS and
DARTS a Speciality

Roller Skates and Boots
in Great Variety

G. A. WILD
AND SONS
Sports Outfitters

14, Manchester Street, Luton
103, High Street N., Dunstable

BOOK AT
BAILEY'S
FOR
LONDON COASTAL COACHES
ALL INDEPENDENT SERVICES
JERSEY AIRWAYS
LONDON THEATRES
AND
AMUSEMENTS

Daily Services to all
parts of Great Britain

TOBACCONIST
AND BOOKING AGENT

38, NEW BEDFORD ROAD
LUTON
Phone 1972

LUTON TOWN

Shirts White
Knickers Black
Stockings Black with White Tops

2
Smith
Right Back

4
Finlayson
Right Half

7
Clark
Outside Right

8
Redfern
Inside Right

Referee—
G. DUTTON
(Warwick)

12
Morton
Outside Left

13
Fenton B.
Inside Left

17
Cockroft
Left Half

20
Walker C.
Left Back

WEST HAM UNITED
Shirts Claret and Blue
Knickers White
Stockings Claret and Sky Blue Hoops

1
Coen
Goal

5
Nelson
Centre Half

9
Billington
Centre



14
Small
Centre

18
Walker R.
Centre Half

22
Conway
Goal

FIRST PRIZE won by J.W. GREEN'S BITTER BEER

other awards for

OATMEAL STOUT and LUTONIAN STOUT

AT BREWERS' EXHIBITION, LONDON

November, 1938

J. W. GREEN LIMITED, The Brewery, LUTON

Telephone - Luton 3131

League—Division II

3
Dunsmore
Left Back

6
Loughran
Left Half

10
Connelly
Inside Left

11
Stephenson
Outside Left

Linesmen—
Blue Flag: K. D. EAMES (Watford)
Red Flag: J. BUCKINGHAM (Birmingham)

15
Macaulay
Inside Right

16
Foxall
Outside Right

19
Corbett
Right Half

21
Bicknell
Right Back

Kick-Off 2.45 p.m.

MODERN
FIREPLACES

HEATING
APPLIANCES

Up-to-date Sanitary Fittings
in White and Colours

For ARTISTIC WALLPAPERS

**CHARLES
BIRD & SONS
LTD.**
COLLINGTON STREET
LUTON

Telephone: Luton 1255/1256

For QUALITY PAINTS

"Triplex" Safety Glass
Motor Screens (Fitted)

Makers of
MIRRORS—SPLASH BACKS—GLASS
SHELVES & GLASS FIRE SCREENS

L-M-S RAILWAY

CHEAP TRIPS from LUTON
To LONDON 2/6

Weekdays—Any train after 12 noon
Sundays—Any train

Depart Saturday, 12th November Return Fares

EVENING EXCURSION

6.15 p.m. NORTHAMPTON. . . 1/7

Wed., Thurs., & Friday,
16th, 17th and 18th November

8.37 a.m. DERBY & NOTTING-
HAM ROAD (Derby
Races) . . . 9/-

HARRY CANHAM

Cardboard Box

Packing Case, Ply Box and

Crate Manufacturer

9a, MARKET HILL, LUTON

TELEPHONE 458

WAKE UP YOUR LIVER BILE

without Calomel—and you'll jump out of bed in
the morning full of vim and vigour

YOUR LIVER should pour out
two pints of liquid bile into
your system daily. If this bile is
not flowing freely, your food
doesn't digest. It just decays
inside you. Gas bloats up your
stomach. You get constipated.
Your whole system is poisoned
and you feel sour, sunk, and the
world looks punk.

Laxatives help a little, but a
mere bowel movement doesn't

get at the cause. It takes those
good old Carters Brand Little
Liver Pills to get these two pints
of bile flowing freely and make
you feel "up and up." Harmless,
gentle, yet amazing in making
bile flow freely. Ask
for Carters Brand Little
Liver Pills.

Stubbornly refuse any-
thing else. 1/3 and 3/- at
all chemists.

NOW ALSO IN
PENNYWORTHS
EVERYWHERE

"THROW-IN"
your lot with us and
BUY YOUR OWN HOUSE

We also offer
A GOOD INVESTMENT

Write for our attractive terms:

**LUTON & MIDLANDS
BUILDING SOCIETY**

Telephone: Luton 1067

11, George St.
West
LUTON

WEBDALE'S
of WELLINGTON STREET

FOR

KITCHEN EQUIPMENT

AND ALL

HOUSEHOLD REQUIREMENTS

AT LOWEST PRICES

21 to 27, WELLINGTON STREET
'Phone 41 LUTON

Charnley and Sons REGISTERED OPTICIANS

NATIONAL HEALTH
INSURANCE

On the Official List of
H.S.A. OPTICIANS

11, Wellington Street
LUTON
Telephone 1808

Over 50 years in the
Printing Trade
in Luton
○○○○

W. F. BUNKER

WILL HELP YOU IN
THE PRODUCTION
OF YOUR PRINTING
REQUIREMENTS

26a, CHAPEL STREET
LUTON
PHONE 224

E. A. GREEN

BOOKSELLER
NEWSAGENT
STATIONER

*Luton's Most Progressive
Circulating Library*

21a, New Bedford Road
and 228, Biscot Road
LUTON

Telephone 476

F. WHITE

BUILDER
and
CONTRACTOR

141,
Stockingstone Road
LUTON

—□—
ALL CLASSES OF
REPAIRS, PAINTING
AND DECORATING
UNDERTAKEN

Estimates Free

To-Day's Half-Time Scores

THIRD LIST

A	IPSWICH T.	v.	PORT VALE
B	MANSFIELD T.	v.	NOTTS. CO'TY
C	QUEEN'S P. R.	v.	ALDRSHOT
D	READING	v.	SWINDON T.
E	SOUTHEND U.	v.	BRISTOL CITY
F	WALSALL	v.	NORTHAMPT'N
G	BARNSELY	v.	DARLINGTON
H	BARROW	v.	DONCASTER
K	N. BRIGHTON	v.	SOUTHPORT
L	STOCKPORT C. v.	GATESHEAD	
		3 p.m. KICK-OFFS		
M	PLYMOUTH	v.	TRANMERE R.
N	EXETER CITY	v.	CRYSTAL PAL.

W. CHAMBERLAIN & Co.

Proprietors—
A. M. Chamberlain
R. Deadman

106, Dunstable Road
LUTON

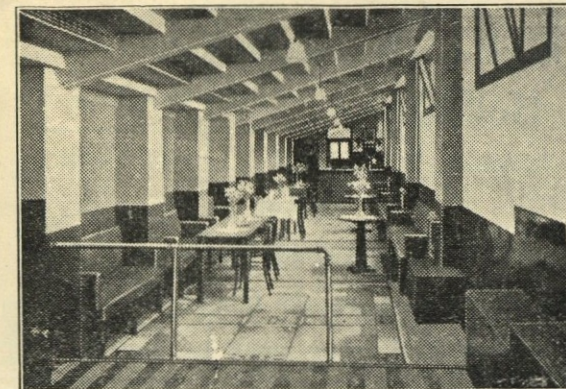
Best British Made
Brushes and Brooms
Enamel Ware

City of London
White Lead Paint

Messrs Merrediths & Co.
Merlac Enamel Paints

Fadeless Wall Paper
Ask for Pattern Books

—□—
A TRIAL SOLICITED



In today's editorial report, we are presenting something of interest to all Football Supporters. As you are aware the Bobbers Stand Club has built the new stand at the Oak Road end of the ground at a cost of £2919 which has been paid, and in appreciation of the good work the Bobbers Stand Club has done in presenting this to the Luton Town Football Club the following framed letter of appreciation has been received from the Directors of the Club.

Philip W. Wright, Esq., President,
Bobbers Stand Club,
Beech Hill Path, 27th October, 1938.
Luton, Beds.

Dear Mr. Wright,
At a meeting of the Board of Directors held this date, the unanimous wish was expressed, that

THE CENTRAL RESTAURANT

20/22/24, CHEAPSIDE
LUTON

○○○

SEATING FOR 300 ESTABLISHED 60 YEARS

Phone 172 and book a table
and have your meal in comfort

WE CAN CATER FOR YOU
ANYWHERE
ANY TIME
ANY NUMBER

LUTON BOBBERS STAND CLUB

we should convey to the officers and members of the Bobbers Stand Club, our most sincere thanks and gratitude for the generous contribution of the fine Covered Stand, which you have caused to be erected, behind the Oak Road goal. We are sure this fine structure is not only appraised by ourselves, as Directors of the Luton Town Football Club, but, if possible, more so by the humble "Bobber" who makes this spot his home on the occasion of our matches. We feel that the Bobbers Stand Club has shown its interest in the Football Club, to a remarkable extent ever since the date of its formation, and the many pleasing utterances that are made to us by visiting clubs and officials, as to the beauty and compactness of our ground, is, we think, only a fitting tribute to the untiring efforts of your Club for the assistance and comfort which you are affording not only the Football Club, but the patrons at our matches.

We wish the Bobbers Stand Club continued success, and once again, not only on our behalf, but also for all our patrons who regularly attend our matches, our most cordial thanks for the New Covered Stand.

Your very sincerely,

Chas. Jeyes, Chairman.
E. Hugh Woods, Vice-Chairman.
Frank J. Andrews,
Horace S. Hewson,
Percival G. Mitchell, } Directors.
Henry Richardson,
A. E. Wickson, Secretary.

A. E. NICHOLLS

Wholesale
CONFECTIONER & TOBACCONIST

CAN SUPPLY YOU WITH
EVERYTHING YOU WANT
FOR THE TOBACCO AND
CONFECTIONERY TRADE
AT LOWEST PRICES



Prompt Delivery and Civility

16, MILL STREET, LUTON

'Phone: Luton 902

W. HOLES

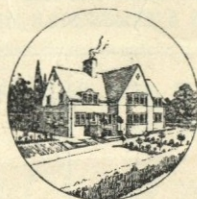
3, Gordon Street, Luton
Coal and
Coke Merchant

Authorized Agent for
Luton Gas Company's
large and graded coke

○

Agent for
L.M.S. Passenger Dept.

Telephone 210



TELEPHONE:
LUTON 2126

P. W. SMITH

Builder — Contractor
High Class Decorator

418, DUNSTABLE ROAD
LUTON



CHARLES JEYES LTD.

The Luton Builders

have the following houses TO LET

3 Bedroom House—Swan Lane

Rent 16/6 per week inclusive

To Let

1 Large Garage or Store,

Burrs Passage off Langley Road

Rent £1/1/0 per week exclusive

3 Bedroom House—Beechwood Road

Rent 15/- per week exclusive

3 Bedroom House—Cavendish Road

Rent 16/- per week exclusive

For Sale

Superior Villa in Humberstone Road

3 Bedroom House—Oakley Close

Rent 16/6 per week inclusive

Land in the best parts of the town

Apply

17a, WINDSOR STREET, LUTON

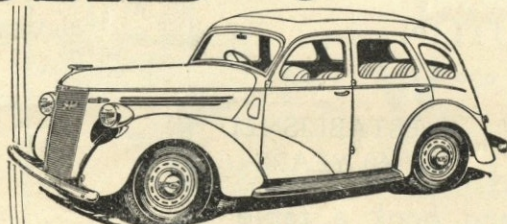
TELEPHONE 594

Introducing

THE MODERN AND BEAUTIFUL

FORD "Prefect"

This strikingly modern and luxurious Ford "Prefect" is very economical to run with a reputation for dependability assured by the famous Ford "Ten" engine.



THE "TEN" AHEAD OF ITS CLASS

FROM

£145

LUTON MOTOR Co., Ltd.

SOLE WHOLESALE FORD DISTRIBUTORS FOR THIS DISTRICT

BEECH HILL - DUNSTABLE ROAD - LUTON

Football League Division II — RESULTS AT A GLANCE

	Blackburn R.	Bradford	Burnley	Bury	Chesterfield	Coventry City	Fulham	Luton Town	Manch. City	Millwall	Newcastle U.	Norwich City	Notts Forest	Plymouth A.	Sheffield U.	Sheffield W.	Southampton	Swansea T.	Tottenham H.	Tranmere R.	West Brom.	West Ham U.
Blackburn Rovers	H	A	A	A	A	A	A	A	A	A	A	A	A	A	A	A	A	A	A	A	A	A
Bradford	4 0	+	2 3	2 2	2 0	0 2	0 4	1 1	3 3	1 4	1 4	1 3	2 1	2 2	1 2	0 3	4 0	1 1	3 1	3 2	2 1	3 1
Burnley	2 2	+	+	0 1	1 1	1 1	2 0	3 2	4 2	1 3	0 1	3 1	2 1	0 1	2 1	3 1	2 1	1 1	3 0	3 0	3 3	2 1
Bury	0 1	1 0	1 0	+	3 1	0 0	0 2	0 2	0 0	0 0	2 3	0 4	2 1	0 1	0 2	0 2	5 2	3 3	0 3	0 3	3 3	1 1
Chesterfield	0 2	2 0	1 3	1 3	+	0 2	0 2	1 0	0 3	1 3	1 0	2 0	0 3	3 1	0 0	3 1	3 0	1 1	1 0	1 0	0 1	1 0
Coventry City	0 1	2 0	2 0	2 0	2 0	+	+	1 0	5 3	2 1	2 1	2 1	2 2	0 0	2 0	2 2	1 1	1 1	1 2	1 2	1 3	1 4
Fulham	1 1	2 2	0 2	0 2	0 2	0 1	3 5	1 2	2 1	1 6	2 1	2 1	0 3	3 0	3 2	1 3	3 0	5 0	1 2	0 0	3 2	2 4
LUTON TOWN	1 1	2 2	2 3	2 3	0 1	0 1	1 2	1 2	6 1	+	+	2 0	4 0	1 2	1 2	1 2	1 0	1 1	3 2	3 2	0 3	2 4
Manchester City	3 3	2 4	1 1	1 1	3 0	3 0	1 2	1 2	+	+	+	2 0	0 1	3 0	3 2	1 3	2 1	5 0	1 1	1 2	1 3	1 4
Millwall	4 1	3 1	1 1	0 0	3 1	1 2	1 2	1 2	2 1	1 6	2 1	2 0	2 2	3 0	1 2	1 3	0 1	1 1	1 1	1 0	1 0	3 2
Newcastle United	1 0	3 2	1 0	3 2	0 1	0 1	1 0	1 2	0 2	0 2	+	+	4 0	2 1	0 0	2 0	1 0	0 1	0 1	1 0	0 1	1 1
Norwich City	1 3	4 0	1 2	1 2	0 2	3 0	2 2	1 2	0 2	0 2	0 2	1 0	0 1	2 1	0 4	1 3	2 1	3 0	5 1	5 1	2 5	1 1
Notts Forest	1 2	4 0	1 2	1 2	3 0	3 0	0 0	1 2	0 3	0 3	0 4	1 2	+	0 3	0 2	0 2	1 2	1 2	1 1	2 3	0 2	0 0
Plymouth Argyle	2 2	2 2	1 0	1 0	1 3	0 0	0 0	4 1	2 3	2 1	1 2	4 0	3 0	+	1 0	0 0	1 2	1 2	1 1	2 1	0 0	0 0
Sheffield United	2 1	1 3	2 0	2 0	2 2	2 2	2 1	0 2	3 1	1 1	0 2	1 2	2 2	0 1	+	+	1 2	2 1	2 2	2 0	2 1	3 2
Sheffield Wednesday	3 0	1 3	2 0	2 0	1 3	2 2	2 1	0 2	3 1	1 1	0 2	1 2	2 2	0 1	0 0	+	3 4	1 1	2 2	3 1	2 1	3 2
Southampton	1 2	2 5	1 2	3 3	0 3	0 3	1 1	2 3	0 5	1 1	0 1	1 2	2 2	2 1	1 2	4 3	+	+	1 2	3 1	2 1	2 5
Swansea Town	0 4	1 1	1 2	3 3	1 1	2 1	1 1	2 3	0 5	1 1	1 0	4 1	2 1	2 1	1 2	1 1	2 1	+	+	+	3 4	2 1
Tottenham Hotspur	1 3	1 3	1 2	3 0	0 1	0 1	1 0	0 0	0 2	2 0	1 5	4 1	1 2	1 1	2 2	3 3	2 1	+	+	+	3 1	1 6
Tranmere Rovers	2 3	0 3	3 0	3 0	1 0	3 1	0 1	2 3	3 1	2 0	5 2	3 2	1 1	1 2	2 2	3 3	2 1	+	+	+	3 4	2 1
West Bromwich A.	1 2	1 2	3 0	3 3	1 0	4 1	1 1	3 0	3 1	1 1	1 5	2 0	1 2	1 2	3 4	0 2	1 3	+	+	+	3 1	1 6
West Ham United	1 3	1 1	1 1	1 1	0 1	4 1	2 3	1 1	4 2	1 1	1 1	2 0	0 0	1 2	2 3	2 3	5 2	5 2	6 1	6 1	+	+

FIXTURES, 1938 - 9

FIRST XI Division II

F. A.

Sat., Aug. 27	West Bromwich Albion	...	A	0	3
Wed., " 31	Newcastle United	...	4	1	H
Sat., Sept. 3	Norwich City	...	1	1	H
Mon., " 5	Coventry City	...	1	2	A
Sat., " 10	Manchester City	A	2
Sat., " 17	Plymouth Argyle	...	4	2	A
Sat., " 24	Sheffield United	...	2	3	H
Sat., Oct. 1	Burnley	...	2	3	A
Sat., " 8	Tottenham Hotspur	...	2	4	H
Sat., " 15	Bradford	...	4	2	H
Sat., " 22	Swansea Town	...	1	1	A
Sat., " 29	Blackburn Rovers	...	4	1	H
Sat., Nov. 5	Tranmere Rovers	A	3
Sat., " 12	West Ham United	...	2	2	H
Sat., " 19	Bury	...	4	3	A
Sat., " 26	Sheffield Wednesday	...	2	2	H
Sat., Dec. 3	Fulham	...	1	4	A
Sat., " 10	Chesterfield	...	1	1	H
Sat., " 17	Millwall	A	...
Sat., " 24	West Bromwich Albion	H	...
Mon., " 26	Nottingham Forest	...	0	1	A
Tues., " 27	Nottingham Forest	...	2	2	H
Sat., " 31	Norwich City	...	4	0	A
Sat., Jan. 7	Manchester City	H	...
Sat., " 14	Plymouth Argyle	...	1	1	H
Sat., " 21	Sheffield United	...	0	2	A
Sat., Feb. 4	Burnley	...	3	1	H
Sat., " 11	Tottenham Hotspur	...	0	3	A
Sat., " 18	Bradford	...	1	1	A
Sat., " 25	Swansea Town	...	5	1	H
Sat., Mar. 4	Blackburn Rovers	...	2	2	A
Sat., " 11	Tranmere Rovers	H	...
Sat., " 18	West Ham United	...	0	0	A
Sat., " 25	Bury	...	0	1	H
Sat., April 1	Sheffield Wednesday	...	0	4	A
Fri., " 7	Southampton	...	1	3	H
Sat., " 8	Fulham	...	4	0	H
Mon., " 10	Southampton	...	6	3	A
Sat., " 15	Chesterfield	...	2	5	A
Sat., " 22	Millwall	H	...
Sat., " 29	Newcastle United	...	3	1	A
Sat., May 6	Coventry City	...	1	4	H

RESERVE FIXTURES London Combination F. A.

Sat., Aug. 27	Brighton & Hove A.	...	6	2	H
Mon., " 29	Millwall	...	0	3	A
Sat., Sept. 3	Bournemouth	...	1	1	A
Wed., " 7	Tottenham Hotspur	...	0	2	H
Sat., " 10	Watford	...	2	0	H
Sat., " 17	Southend United	...	3	1	H
Mon., " 19	Tottenham Hotspur	...	3	5	A
Sat., " 24	Queens Park Rangers	...	0	4	A
Wed., " 28	Southampton	...	2	0	A
Sat., Oct. 1	Chelsea	...	1	1	H
Wed., " 5	Leicester City	...	0	1	H
Sat., " 8	Charlton Athletic	...	0	4	A
Mon., " 10	Leicester City	...	1	4	A
Sat., " 15	Fulham	...	1	5	A
Sat., " 22	Brentford	...	0	0	H
Sat., " 29	Arsenal	...	0	1	A
Sat., Nov. 5	Clapton Orient	...	3	0	H
Sat., " 12	Portsmouth	...	0	0	A
Sat., " 19	West Ham	...	0	1	H
Sat., " 26	Northampton Town	...	1	1	A
Sat., Dec. 3	Bristol City	...	3	1	H
Sat., " 10	Swansea Town	...	1	0	A
Sat., " 17	Crystal Palace	...	6	1	H
Sat., " 24	Brighton & Hove A.	...	1	1	A
Sat., " 26	Southampton	...	2	1	H
Mon., " 31	Bournemouth	...	2	1	H
Sat., Jan. 7	Reading	...	3	1	H
Sat., " 14	Watford	...	2	3	A
Sat., " 21	Southend United	...	0	4	A
Sat., " 28	Queens Park Rangers	...	2	2	H
Sat., Feb. 4	Chelsea	...	2	6	A
Sat., " 11	Charlton Athletic	...	2	0	H
Sat., " 18	Fulham	...	3	0	H
Sat., " 25	Brentford	...	0	3	A
Sat., Mar. 4	Arsenal	...	1	2	H
Sat., " 11	Clapton Orient	...	7	0	A
Sat., " 18	Portsmouth	...	1	2	H
Sat., " 25	West Ham	...	1	1	A
Sat., April 1	Northampton Town	...	3	3	H
Fri., " 7	Coventry City	...	0	1	A
Sat., " 8	Bristol City	...	2	3	A
Mon., " 10	Coventry City	...	4	0	H
Sat., " 15	Swansea Town	...	1	1	H
Sat., " 22	Crystal Palace	...	3	1	A
Sat., " 29	Millwall	...	5	1	H
Sat., May 6	Reading	...	4	1	A

LEAGUE TABLES

LEAGUE DIVISION II

	Pld.	Won	Lost	Drn.	For	Agst.	P.
Fulham	14	7	2	5	23	13	19
Newcastle United	14	8	4	2	27	15	18
West Brom. A.	14	8	5	1	35	28	17
Sheffield United	13	6	3	4	20	14	16
Blackburn Rovers	14	7	5	2	29	23	16
Millwall	13	6	4	3	25	13	15
Tottenham Hotspur	13	6	4	3	22	20	15
LUTON TOWN	13	6	4	3	20	21	15
Sheffield Wednesday	13	5	4	4	24	21	14
Coventry City	13	5	4	4	15	15	14
Bradford	13	5	4	4	22	23	14
Burnley	14	5	5	4	18	22	14
West Ham United	14	5	6	3	30	22	13
Plymouth Argyle	13	5	5	3	17	16	13
Bury	13	4	4	5	18	19	13
Southampton	13	5	6	2	20	24	12
Chesterfield	13	5	7	1	13	19	11
Manchester City	13	4	7	2	27	32	10
Notts Forest	13	3	6	4	14	21	10
Norwich City	13	4	9	0	16	25	8
Swansea Town	13	1	6	6	15	31	8
Tranmere Rovers	13	3	9	1	16	29	7

LONDON COMBINATION

	Pld.	Won	Lost	Drn.	For	Agst.	P.
Arsenal	16	11	3	2	54	25	24
LUTON TOWN	17	10	4	3	47	24	23
Chelsea	16	10	5	1	35	21	21
Watford	17	9	5	3	30	29	21
Portsmouth	16	8	4	4	41	29	20
Tottenham Hotspur	16	8	5	3	41	22	19
West Ham United	15	8	4	3	36	30	19
Coventry City	14	9	5	0	45	19	18
Queens Park Rangers	15	8	5	3	37	20	18
Crystal Palace	16	7	5	4	41	31	18
Fulham	16	7	6	3	27	22	17
Brentford	16	6	6	4	39	34	16
Southend United	13	6	3	4	21	17	16
Brighton & Hove A.	15	7	6	2	25	30	16
Bournemouth	17	4	6	7	30	36	15
Swansea Town	17	6	8	3	17	34	15
Charlton Athletic	17	5	8	4	26	29	14
Leicester City	18	6	10	2	35	49	14
Millwall	16	5	8	3	22	37	13
Bristol City	18	6	12	0	27	46	12
Southampton	16	4	10	2	27	40	10
Reading	15	3	9	3	26	53	9
Northampton	15	4	10	1	16	33	9
Clapton O.	17	2	12	3	15	50	7

Edward Martell & Co., Ltd.

TELEPHONE

896-7

Coal and Coke Merchants

ESTABLISHED

1879

24, UPPER GEORGE STREET, LUTON

Burn "Hucknall" Ashless Coal

It Scores Every Time!!

Popular Price! Saves Labour!! Great Heat!!!

WHY NOT TRY IT?

CARRY ON LUTON TOWN!

a packet of
SWEET
ROSEMARY
TOBACCO

is always enjoyable

W. & F. FAULKNER LONDON

BRANCH OF THE IMPERIAL TOBACCO CO.
(OF GREAT BRITAIN AND IRELAND), LIMITED

SEE that you "SEE"
all of the game
comfortably,

if you cannot do so

CALL AND SEE

A. G. PRATT

M.P.S., F.S.M.C.

CHEMIST AND OPTICIAN

169, DUNSTABLE ROAD, LUTON

(Corner Kenilworth Road)

Recognised by the O.B.A.C. for
National Health Insurance Benefit

'PHONE 708

Six Weeks to Xmas!

Look out for an announcement
of our grand

TOY BAZAAR

The finest and best selection
of Toys in the County will
be found here

A. G. Partridge & Co
PHONE 234 10-12 CHAPEL ST.
LUTON

You need

**EASY-RUNNING
& RELIABILITY**



NO CYCLE IS
COMPLETE
WITHOUT THE
FAMOUS STUR-
MEY - ARCHER
3-SPEED GEAR.

in the Country!

MODELS FROM £5:10:0 CASH

(Sturmey-Archer 3-speed gear 21/- extra, cash)

Deferred Terms from

5/- down and 12 equal monthly payments (from
10/7). Sturmey-Archer 3-speed gear 2/1 extra,
monthly. Call for "The Book of the Raleigh."

RALEIGH
THE ALL-STEEL BICYCLE

Printed by E. A. Allen, 424, Dunstable Road, Luton. 'Phone 1626.

Published by Luton Town Football and Athletic Co., Ltd., Kenilworth Road, Luton.