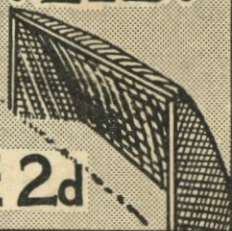




# LUTON TOWN FOOTBALL ·AND· ATHLETIC CO. LTD.

OFFICIAL  
JOURNAL

PRICE 2d



League—Division II

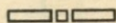
September 24th, 1938.

LUTON TOWN v. SHEFFIELD UNITED

**“TRUE-FORM”**  
THE FINEST FOOTWEAR  
IN THE TOWN



BUY DIRECT FROM THE MAKERS



LOCAL BRANCH:

**32, GEORGE STREET**

Head Office and Factories: NORTHAMPTON



Insist upon the  
Building Materials for  
your new house coming from

# POWDRILL'S

BUILDERS' MERCHANTS  
COAL and COKE MERCHANTS  
BRICK MANUFACTURERS  
SAND & GRAVEL QUARRY OWNERS

GEORGE POWDRILL & SON LTD., 1, 3 & 5, HITCHIN ROAD, LUTON  
TELEPHONE 2073 (2 Lines)

## HELEY'S CAFE

MILL STREET  
NEXT TO PALACE THEATRE, LUTON

DINNERS  
11.30 — 2.30

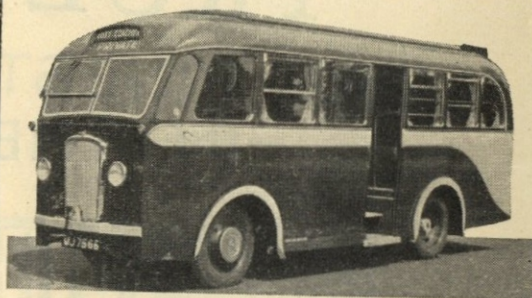
TEAS  
3.30 — 6

SUPPERS  
6 — 12

SPECIAL  
FOOTBALL TEAS

FISH AND CHIPS  
SAUSAGE AND MASH  
— ETC. —

PROPRIETOR: A. S. HELEY



## COOPERS COSY COACHES

F. J. COOPER LTD.

20, 26 and 30 Seater  
Coaches for private hire,  
also stream lined 7 Seater  
Car for weddings and  
long distances

OXEN ROAD GARAGE

'Phone LUTON 731

LUTON  
FOOTBALL AND



TOWN  
ATHLETIC CO.

Telephone No. 3151-2.

LIMITED.

President: Alderman Harry Arnold, C.A., J.P.

Vice-President: The Right Honourable E. Leslie Burgin, M.P., P.C., D.L.I.,  
(His Majesty's Minister of Transport).

Directors:

Chairman: Alderman Chas. Jeyes, C.C.

E. Hugh Woods, Esq., (Vice-Chairman) Frank J. Andrews, Esq.,

Alderman Stanley H. Godfrey, C.A., Councillor Horace S. Hewson,

Percival G. Mitchell, Esq., Henry Richardson, Esq., C.C., Philip W. Wright, Esq.

Team Manager: Mr. Neil McBain.

Secretary: Mr. A. E. Wickson.

Honorary Medical Officer: E. J. Crarer, Esq., M.B., Ch.B.

Honorary Solicitors: Messrs Machin & Co., 17-19, George Street West, Luton.

### CLUB NOTES by "Hatter"

After three weeks we again stage a League II match and receive as our guests the "Blades" of Sheffield United. Our visitors made a desperate effort last term to secure promotion and were only beaten on the post by Manchester United who won the coveted honour on goal average only. That they intend to be somewhere near the top again this term can be seen by the way they have commenced the season, for at the present they are the only unbeaten team in the Division. The following is a brief summary of the players who will wear the red and white shirt today.

**Jack Smith** (goalkeeper). In his ninth season with the club. A brilliant player. Born at Stocksbridge, near Sheffield, he spent a few years with his family in America and, as a youth, first played as a forward. Has graduated through the Sheffield club's "A" team. Member of the Cup Final team of 1936.

**Harry Hooper** (right back). Sound and reliable defender, admirable placer of free kicks. Stands 5 ft. 10 ins. and weighs 11 st. 6 lbs. Has speed and tackles well. Born at Nelson, he used to be a tailor's assistant. He became a professional with the Nelson team and was transferred to Sheffield United in February, 1930. Also member of the Cup Final team of 1936.

**Albert Cox** (left back). Came into prominence when he made his debut in first class football with the United against Fulham in the Cup semi-final at Wolverhampton in 1936 when only 18 years old. Very fast, a tenacious tackler and somewhat unorthodox. Hard to pass. Was found in the village of Treeton, Rotherham, and developed in United's "A" team.

**Ernest Jackson** (right half back). One of the best wing half backs in the Second Division, indeed in the League. Still another "home product" of the Sheffield club, for he is a

Sheffield native. Began as a colt in 1932. Speedy, a skilful tackler and feeder of forwards, he is a grand worker. Before joining Sheffield United had a trial with Sheffield Wednesday.

**George Tootill** (centre half back). Native of Walkden, near Bolton, and joined Sheffield United in the middle of last season from Plymouth Argyle. Got his chance with the League team this season owing to an injury to the regular centre half back, Tom Johnson. Tootill has filled the breach admirably. He is a player of style and effectiveness and covers a tremendous amount of ground. Well built.

**Alfred Settle** (left half back). A product of Barnsley minor football. His father used to be a Sheffield Wednesday player at the same time as Mr. J. E. Davison, the Sheffield United manager, who once kept goal for England. Drafted into the League side last season from the reserves and has done well. Strong and resourceful half back and like so many of the Sheffield players did not cost a penny. Non-stop worker.

**Harold Barton** (outside right). Born at Leigh in Lancashire and a former Liverpool forward. He was outstanding as a boy football player while living at Blackpool and signed for Liverpool in 1928. He was transferred to Sheffield United in June, 1934. He has a fine turn of speed and has good ball control. A powerful shot. Another player who represented the club in the Cup Final in 1936.

**Harold Hampson** (inside right). Was obtained during the close season from Southport. A brother of the ill-fated Jimmy Hampson, the international star of Blackpool, who died so tragically in Morecambe Bay when on a fishing expedition. Born at Little Hulton, near Walkden, Bolton. Only 20 years of age and full of promise. Not easily knocked off the ball and a good shot.



**Emphraim Dodds** (centre forward). Joined Sheffield United on a free transfer just over four years ago from Huddersfield Town and has proved to be a wonderful bargain for the Sheffield club. In four seasons has scored 100 League goals for the team. Tall, with corresponding poundage, he is a hard centre forward to keep in hand. One of the outstanding centre forwards in the game. Shoots readily from any angle. Was born in Fifehire, but went to live in Durham at the age of 12 and played all his football there until signed by Huddersfield Town in 1932. Played at Wembley in 1936.

**Jack Pickering** (inside left). Notable schemer in the attack. A player of fine control; a thinker and maker of opportunities for others, though he has a terrific shot in both feet when he likes to produce it. He joined the club in his 'teens and although in his 13th season with the club is far from being a veteran. He has played for England against Scotland at Hampden Park. Cost nothing. Played at Wembley. Sheffield product.

**George Jones** (outside left). Developed in the Sheffield United "A" team as a youngster, for he is another Sheffield native. Not 20 years old yet, but a lad of great promise and is making the most of his opportunities on promotion to the League side again in place of Leyfield. Has been with the club three years. He is fast and spirited, centres a ball well and can shoot hard.

The "Stiffs" are due at Shepherds Bush where they will do well to retain their unbeaten certificate whilst on Monday the "A" team are due at Rushden, not being in action today.

## GEORGE HENRY STEPHENSON

George Stephenson is a name well known in the North East of England not only on account of the famous railway engineer of that name, but also through its association with our left winger.

George was born at Stillington, County Durham, on the 29th November, spending his schooldays at the local Council School. Curiously enough this emporium of learning did not run a football team so George had to look elsewhere for an outlet for his football craft and at the age of 13½ he was found wearing the colours of Stillington Juniors. His first game with them was at centre forward, but afterwards he was given the left full back berth, subsequently his regular position was inside left and it was in this position that for three consecutive years he represented the Stockton Junior League against the Middlesbrough Junior League. Intermingled with his games for Stillington Juniors he also played for Stillington St. Johns in the local Church League. At the age of 18 he accepted an invitation to play for Durham City and played altogether one season for them in the North Eastern League. He had not reached his nineteenth birthday when he was transferred to Aston Villa, with whom he remained 3½ years before joining the "Hatters" 5 seasons ago. A bricklayer by trade. Height 5 ft. 9 in. Weight 12 stones.

The "Blades" are with us again,  
The team that's cut a great name.  
Last time they cut ice  
By cutting us twice  
And they're hoping to do cutting again.

But though they're a team of great fame,  
We've a winger with great name the same,  
With runs most dashing  
And shots most slashing  
His cut in has won many a game.

Though honours this great team have won  
And justified their place in the sun,  
We must agree  
That equally  
Is the fame of GEORGE STEPHENSON.

Now a splendid fellow is Steve,  
To club he's been loyal and true.  
By the way, we do believe  
His benefit soon will be due.

For one whose speed is terrific  
And whose kick is so mighty strong,  
May the turnstiles merrily click  
When his benefit comes along.

Then when old, he can repeat the story  
Of promotion and how it was won.  
And say in truth—"There'd have been no glory  
If there'd been no GEORGE STEPHENSON."

H.B.

The story of Sheffield United  
Has often been recited,  
So let us be terse  
And with the reverse  
Of last year's result be delighted.

George Stephenson, who today appears  
As he's done for nearly five years,  
At outside left fast and clever,  
Left outside hardly ever,  
When he scores there's always loud cheers.

## UNITED COUNTIES LEAGUE

### Fixtures Season 1938-9

Matches will be played at Ford End Road, Bedford.

					F. A.
Sat.,	Aug. 27	Wellingborough ...	...	...	A 3 1
Sat.,	Sept. 3	Stewart and Lloyds ...	...	...	H 0 0
Sat.,	" 17	Wisbech ...	...	...	A 2 2
Mon.,	" 26	Rushden ...	...	...	A
Sat.,	Oct. 8	Spalding ...	...	...	H
Sat.,	Nov. 5	Bedford ...	...	...	A
Sat.,	" 12	St. Neots ...	...	...	H
Sat.,	" 19	Biggleswade ...	...	...	A
Sat.,	Dec. 3	Wellingborough ...	...	...	A
Sat.,	" 24	Rushden ...	...	...	H
Mon.,	" 26	St. Neots ...	...	...	A
Sat.,	" 31	Stewart and Lloyds ...	...	...	A
Sat.,	Jan. 7	Biggleswade ...	...	...	H
Sat.,	" 21	Desborough ...	...	...	A
Sat.,	Feb. 4	Kettering ...	...	...	A
Sat.,	" 11	Stamford ...	...	...	H
Sat.,	" 18	Wisbech ...	...	...	H
Sat.,	Mar. 4	Bedford ...	...	...	H
Sat.,	" 18	Wellingborough ...	...	...	H
Sat.,	April 1	Kettering ...	...	...	H
Fri.,	" 7	Stamford ...	...	...	A
Sat.,	" 8	Spalding ...	...	...	A
Sat.,	" 15	Desborough ...	...	...	H

## ATTENDANCE BAROMETER

1937	1938		1937			1938		
			£	s.	d.	£	s.	d.
Aug. 28	Aug. 27	Brighton & Hove Reserves ...	...	...	...	6356	144	15 3
		Southend United Reserves ...	...	...	...	17689	811	11 4
Sept. 1	Aug. 31	Newcastle United ...	...	...	...	25349	1299	14 4
		Aston Villa ...	...	...	...	16547	747	0 6
Sept. 4	Sept. 3	Norwich City ...	...	...	...	20610	994	1 2
		Manchester United ...	...	...	...	5955	131	1 7
Sept. 8	Sept. 7	Tottenham Hotspur Reserves ...	...	...	...	4823	93	6 7
		Clapton Orient Reserves ...	...	...	...	7256	163	5 10
Sept. 11	Sept. 10	Watford Reserves ...	...	...	...	7725	175	7 7
		Chelsea Reserves ...	...	...	...	5826	126	10 7
Sept. 18	Sept. 17	Southend Reserves ...	...	...	...	23788	1235	7 8
		Tottenham Hotspur ...	...	...	...	89641	3914	17 7
						59629	2124	5 1

N.B. The attendance figures for both League II and London Combination matches, include the number of Season Tickets issued. The gate receipts are the net amounts received after Entertainment Tax has been deducted.

**DO NOT MISS OBTAINING A COPY OF THE PROGRAMME ON SATURDAY, OCTOBER 8th. It will contain a full sized autographed Art Plate of Tom Smith.**

There are still a few copies left of the programmes for August 31st and September 3rd. These include art plates of Jack Nelson and Bill Dolman. Any supporter desirous of purchasing a copy should make application at the office, 70-72, Kenilworth Road, Luton. Price 2d.

**PURCHASE A PROGRAMME AND HELP THE FOOTBALL CLUB.**

## PRACTICE MATCH RECEIPTS

The Gate Receipts of the three practice matches held this season on Saturday, 13th August and Wednesdays the 17th and 24th August totalled £184/14/6. This is a decrease of £70/10/3 compared with last year when the receipts amounted to £255/4/9, but it must be remembered that in 1937 the two games were played on Saturdays, whilst this year, Saturday, 20th August was taken up by the Jubilee game with Watford. Consequently our donations to charities are lower, with the Bute Hospital receiving the largest share. The Directors have promised, at a cost of £800, to endow a bed in the New Hospital in the name of the Club and the amount now forwarded towards this object totals £370. The following shows how the amount of £184/14/6 has been disbursed.

	£	s.	d.
Bute Hospital, Luton ...	...	...	143 5 6
Childrens Hospital, Luton ...	...	...	10 0 0
Beds. F.A. Accident and Benevolent Fund ...	...	...	9 8 0
Football League Secretaries' and Managers' Benevolent Fund ...	...	...	3 3 0
British Empire Cancer Campaign (Luton Branch) ...	...	...	2 2 0
Luton Guild of Service ...	...	...	2 2 0
St. Johns Ambulance Brigade (Luton Division) ...	...	...	2 2 0
National Society for Prevention of Cruelty to Children ...	...	...	2 2 0
Luton Borough Police Aided Boot Fund	...	...	2 2 0
Luton and South Beds. Police Court Mission Fund ...	...	...	2 2 0
Manor House Hospital ...	...	...	2 2 0
Referees Association Benevolent Fund	...	...	2 2 0
Papworth Village Settlement ...	...	...	2 2 0
	£184	14	6

No 1696

**Next Match, Saturday, October 1st, 1938.**

LONDON COMBINATION

**LUTON TOWN RES. v. CHELSEA RES.**

Kick - Off 3.15 p.m.

**ADMISSION—Centre Stand 1/6**

**Stand and Enclosure 1/- Ladies and Boys 6d. : Ground 6d. Boys 3d.**

(ALL PRICES INCLUDE ENTERTAINMENT TAX)



**Saturday—Football Match****Monday—Rent Day**

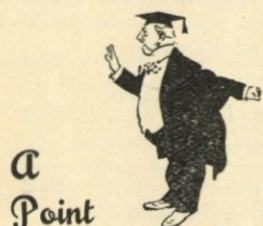
Are these two rules peculiar to your weekly routine? If so why not come and have a talk with us. We do not for one moment suggest that you do anything about Saturday, but we honestly believe you will be surprised to learn how easy it is to become your own landlord by paying a small inclusive deposit, and repayments that are *less than rent*. We will be very pleased to give you full particulars without any obligation.

**SELL & MITCHELL***Auctioneers, Land & Estate Agents***7 & 9, PRINCESS STREET, LUTON**

'PHONE 2003/4

**95, HIGH STREET NORTH, DUNSTABLE**

'PHONE 354



**A**  
Point  
to remember!

**E. A. ALLEN**  
the Printer of this  
Programme

WILL GIVE SERVICE  
AND SATISFACTION  
424, DUNSTABLE ROAD  
LUTON  
Telephone 1626

**To-Day's Half-Time Scores****FIRST LIST**

A	BIRMINGHAM	v.	PRESTON N.E.	.....
B	BLACKPOOL	v.	GRIMSBY T.	.....
C	DERBY CO'NTY	v.	STOKE CITY	.....
D	HUDDERSFIELD	v.	EVERTON	.....
E	LEICESTER C.	v.	BOLTON WAN.	.....
F	LIVERPOOL	v.	LEEDS UNITED	.....
G	MANCH. UN.	v.	CHELSEA	.....
H	MIDDLESBRO'	v.	CHARLTON A.	.....
K	PORTSMOUTH	v.	WOLVES	.....
L	BLACKBURN	v.	MANCH. CITY	.....
M	BURY	v.	CHESTERFIELD	.....
N	NEWCASTLE	v.	SOUTHAMPTON	.....

NOTE—The Letter in the Programme corresponds with the letter on the Board—thus A 0—1 means that the first-named Club has scored 0 and their opponents 1.

**Specialities**

Paint and Enamel  
Manufacturers

"Stuart" Series  
Wallpapers

**OGDEN &  
CLEAVER**

Stuart Street, LUTON

TELEPHONE 580

**H. R.  
WILLIAMS**

REGISTERED  
ELECTRICAL CONTRACTOR

and Member of the  
Electrical Contractors' Association

17, DURHAM ROAD

LUTON

'PHONE: LUTON 2012

**NEWBERY**

&amp; CO. (LUTON) LIMITED

32/36, CROMWELL ROAD

LUTON

*Builders' Merchants**Ironmongers**Door and Gate Importers*

PHONE 294

PRIVATE 511

PHONE 223

EST. 1860

**WHITE'S**

again supply

LUTON TOWN  
FOOTBALL CLUB

WITH THEIR

FOOTBALL  
BOOTS

THEY know the Best

**H. WHITE** (LUTON)  
LTD.

FOOTWEAR

of every description  
MANCHESTER STREET  
LUTON**To-Day's Half-Time Scores****SECOND LIST**

A	NORWICH C.	v.	BURNLEY	.....
B	NOTTS. FOR.	v.	COVENTRY C.	.....
C	WEDNESDAY	v.	SWANSEA T.	.....
D	WEST BROM.	v.	TOTTENHAM	.....
E	BOURNEM'UTH	v.	SOUTHEND U.	.....
F	BRIGHTON & H.	v.	EXETER CITY	.....
G	BRISTOL ROV.	v.	CARDIFF C.	.....
H	NORTHAMPT'N	v.	NOTTS. CO'TY	.....
K	PORT VALE	v.	MANSFIELD T.	.....
L	READING	v.	IPSWICH T.	.....
M	SWINDON T.	v.	WATFORD	.....
N	WALSALL	v.	QUEEN'S P. R.	.....

**LUTON  
GAS COMPANY**

JUST A TURN OF THE TAP  
AND GAS GIVES INSTANT  
HOT WATER, REAL FIRE-  
SIDE COMFORT, CAREFREE  
COOKING

*Be up-to-date with Gas*

Showrooms—GEORGE STREET  
and DUNSTABLE ROAD

**Wines & Spirits****L. GREENER***Wine Merchant*

60, WELLINGTON STREET  
LUTON

DELIVERIES DAILY  
LUTON & DISTRICT

TELEPHONE:  
LUTON 2926

**S. J. HAWKINS**

STATION WORKS. FLITWICK BEDS.

'PHONE: FLITWICK 253

PNEUMATIC TYRED  
TRUCKS, TROLLEYS AND  
BARROWS  
for all trades

WHOLESALE AND RETAIL

Send for List L101 Post Free

**CYCLES &  
REPAIRS**

Get your new machine from

**S. A. LEWIS**

138, DUNSTABLE ROAD

LUTON

PHONE 807

Terms from

2/-  
Weekly

All kinds of  
repairs executed  
by experienced  
workmen



# MARES

for men's  
**JAEGER**  
for  
**WARMTH**

Charles  
**MARES Limited**  
GEORGE STREET, LUTON  
And at St. Albans

## PALACE THEATRE

TODAY

CAROLE LOMBARD FREDRIC MARCH

### 'NOTHING SACRED'

NEXT WEEK  
DOROTHY LAMOUR and RAYMOND MASSEY in  
(A) 'THE HURRICANE'  
NEXT WEEK

## stick to beer

BY ALL MEANS

## J.W. GREEN'S

J. W. GREEN LIMITED, The Brewery, LUTON

Telephone - Luton 3131

## L-M-S RAILWAY

### CHEAP TRIPS from LUTON To LONDON 2/6

Weekdays—Any train after 12 noon  
Sundays—Any train  
Depart Return Fares  
Sunday, 25th September  
11.35 a.m. BRIGHTON . . . 5/3  
Saturday, 1st October  
1.45 p.m. SOUTHEM (Illuminations) . . . 4/9  
Sunday, 2nd October  
EVENING EXCURSION  
5.5 p.m. SOUTHEM . . . 2/5

Now is the time to  
purchase your  
**FOOTBALL GEAR**

JERSEYS  
KNICKS  
HOSE  
SHIN GUARDS  
BOOTS—ETC.

Agents for Manfield Hotspur  
Football Boots

Dartboards and Darts  
a speciality

Roller Skates in Great Variety

Price Lists free  
on application

## G. A. WILD

AND SONS

Sports Outfitters

14, Manchester Street, Luton  
103, High Street N., Dunstable

## BOOK AT BAILEY'S

FOR  
LONDON COASTAL COACHES  
ALL INDEPENDENT SERVICES

JERSEY AIRWAYS  
LONDON THEATRES  
AND  
AMUSEMENTS

Daily Services to all  
parts of Great Britain

TOBACCONIST  
AND BOOKING AGENT

38, NEW BEDFORD ROAD

LUTON

Phone 1972

### LUTON TOWN

Shirts White  
Knickers Black  
Stockings Black with White Tops

1 Goal  
2 Smith Right Back  
3 Dunsmore Left Back  
4 Finlayson Right Half  
5 Nelson Centre Half  
6 Loughran Left Half  
7 Ferguson Outside Right  
8 Connelly Inside Right  
9 Vinall Centre  
10 Roberts Inside Left  
11 Stephenson Outside Left  
12 Jones Outside Left  
13 Pickering Inside Left  
14 Dodds Centre  
15 Hampson Inside Right  
16 Barton Outside Right  
17 Settle Left Half  
18 Tootill Centre Half  
19 Jackson Right Half  
20 Cox Left Back  
21 Hooper Right Back  
22 Smith Goal

Shirts Red and White Stripes  
Knickers Black  
Stockings Black with Red and White Tops

League—Division II

Linesmen—  
Blue Flag: W. T. JINKS (Leicester)  
Red Flag: E. C. ROBINSON (Thornton Heath)

Kick-Off 3.15 p.m.

MODERN  
FIREPLACES

HEATING  
APPLIANCES

Up-to-date Sanitary Fittings  
in White and Colours

For ARTISTIC WALLPAPERS

**CHARLES BIRD & SONS LTD.**  
COLLINGTON STREET  
LUTON

Telephone: Luton 1255/1256

For QUALITY PAINTS

"Triplex" Safety Glass  
Motor Screens (Fitted)

MIRRORS—SPLASH BACKS—GLASS  
SHELVES & GLASS FIRE SCREENS

HARRY CANHAM

Cardboard Box

Packing Case, Ply Box and

Crate Manufacturer

9a, MARKET HILL, LUTON

TELEPHONE 458

## WAKE UP YOUR LIVER BILE

without Calomel—and you'll jump out of bed in  
the morning full of vim and vigour

YOUR LIVER should pour out  
two pints of liquid bile into  
your system daily. If this bile is  
not flowing freely, your food  
doesn't digest. It just decays  
inside you. Gas bloats up your  
stomach. You get constipated.  
Your whole system is poisoned  
and you feel sour, sunk, and the  
world looks punk.

Laxatives help a little, but a  
mere bowel movement doesn't

get at the cause. It takes those  
good old Carters Brand Little  
Liver Pills to get these two pints  
of bile flowing freely and make  
you feel "up and up." Harmless,  
gentle, yet amazing in making  
bile flow freely. Ask  
for Carters Brand Little  
Liver Pills.

Stubbornly refuse any-  
thing else. 1/3 and 3/- at  
all chemists.

NOW ALSO IN  
PENNYWORTHS  
EVERYWHERE

There is no  
'TRICK PLAY'  
in this Building Society.

## A SAFE INVESTMENT

WHICH DOES NOT DEPRECIATE.

Full details of attractive terms to Investors from

LUTON & MIDLANDS  
BUILDING SOCIETY

Telephone: Luton 1067

11, George St.  
West  
LUTON

## WEBDALE'S

of WELLINGTON STREET

FOR

KITCHEN EQUIPMENT

AND ALL

HOUSEHOLD REQUIREMENTS

AT LOWEST PRICES

21 to 27, WELLINGTON STREET  
Phone 41 LUTON



## Charnley and Sons REGISTERED OPTICIANS

NATIONAL HEALTH  
INSURANCE

On the Official List of  
H.S.A. OPTICIANS

11, Wellington Street  
LUTON  
Telephone 1808

Over 50 years in the  
Printing Trade  
in Luton  
○○○○

## W. F. BUNKER

WILL HELP YOU IN  
THE PRODUCTION  
OF YOUR PRINTING  
REQUIREMENTS

26a, CHAPEL STREET  
LUTON  
PHONE 224

## E. A. GREEN

BOOKSELLER  
NEWSAGENT  
STATIONER

*Luton's Most Progressive  
Circulating Library*

21a, New Bedford Road  
and 228, Biscot Road  
LUTON  
Telephone 476

## F. WHITE

BUILDER  
and  
CONTRACTOR

141,  
Stockingstone Road  
LUTON

ALL CLASSES OF  
REPAIRS, PAINTING  
AND DECORATING  
UNDERTAKEN

Estimates Free

## To-Day's Half-Time Scores THIRD LIST

A	BRADF'D CITY	v.	ACCRINGTON	.....
B	CHESTER	v.	BARNSELY	.....
C	HULL CITY	v.	STOCKPORT C.	.....
D	YORK CITY	v.	WREXHAM	.....
E	ARSENAL	v.	ASTON VILLA	.....
F	BRENTFORD	v.	SUNDERLAND	.....
G	FULHAM	v.	BRADFORD	.....
H	MILLWALL A.	v.	PLYMOUTH	.....
K	WEST HAM U.	v.	TRANMERE R.	.....
L	CLAPTON O'	v.	BRISTOL CITY	.....
M	NEWPORT CO'	v.	ALDERSHOT	.....
N	TORQUAY U.	v.	CRYSTAL PAL.	.....

## W. CHAMBERLAIN & Co.

Proprietors—  
A. M. Chamberlain  
R. Deadman  
106, Dunstable Road  
LUTON

Best British Made  
Brushes and Brooms  
Enamel Ware

City of London  
White Lead Paint

Messrs Merrediths & Co.  
Merlac Enamel Paints

Fadeless Wall Paper  
Ask for Pattern Books

—□—  
A TRIAL SOLICITED

## W. HOLES

3, Gordon Street, Luton

Coal and  
Coke Merchant

Authorized Agent for  
Luton Gas Company's  
large and graded coke

Agent for  
L.M.S. Passenger Dept.

Telephone 210



TELEPHONE:  
LUTON 2126

## P. W. SMITH

Builder — Contractor  
High Class Decorator

418, DUNSTABLE ROAD  
LUTON



## LUTON BOBBERS STAND CLUB

President: P. W. Wright, Esq.

Vice-Chairman: E. G. Gibbs, Esq.

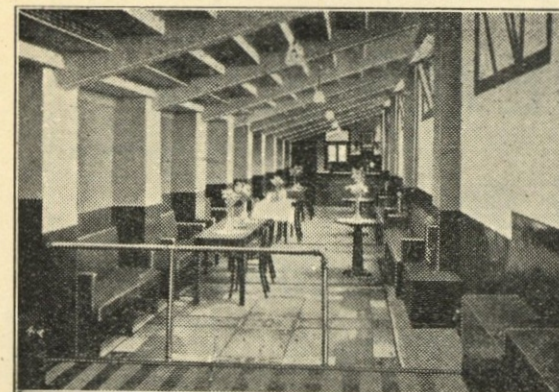
Hon. Secretary: Mr. A. C. Wright

Hon. Treasurer: Mr. J. Collier

Committee:

Messrs W. Banks, F. Cooper, A. Flitton,  
N. Lines, S. Setchell, R. G. Smith

TELEPHONE 2566



The Games Section has started in earnest as a new member of the Luton Skittles League by winning their first League Match by a good majority over The British Legion Club, Leagrave, before a good attendance on Tuesday, September 20th.

On Wednesday, September 21st, a return visit was paid us by a well-known House in the town. A variety of matches were arranged between the gentlemen and

lady members of both Clubs for the various games. Up to the time of going to press, the results were in doubt as the large number of tournaments could not be decided.

*Of especial interest to Members of the Club.* A special Bobbers Stand Club Badge, modelled on the lines of the Club's colours is being manufactured. We hope to have this badge on sale at the next home match, at the price of 6d. each.

## THE CENTRAL RESTAURANT

20/22/24, CHEAPSIDE  
LUTON

○○○

SEATING FOR 300 ESTABLISHED 60 YEARS

Phone 172 and book a table  
and have your meal in comfort

WE CAN CATER FOR YOU  
ANYWHERE  
ANY TIME  
ANY NUMBER

## A. E. NICHOLLS

Wholesale  
CONFECTIONER & TOBACCONIST

CAN SUPPLY YOU WITH  
EVERYTHING YOU WANT  
FOR THE TOBACCO AND  
CONFECTIONERY TRADE  
AT LOWEST PRICES



Prompt Delivery and Civility

16, MILL STREET, LUTON

'Phone: Luton 902



UC43

	Blackburn R.	Bradford	Burnley	Bury	Chesterfield	Coventry City	Fulham	Luton Town	Manch. City	Millwall	Newcastle U.	Norwich City	Notts Forest	Plymouth A.	Sheffield U.	Sheffield W.	Southampton	Swansea T.	Tottenham H.	Tranmere R.	West Brom.	West Ham U.
Blackburn Rovers	H A	+ 4 0			2 0											0 3		4 0			3 2	3 1 2 1
Bradford	H H	0 4 +			A				4 2	1 3		3 1						1 1		3 0		
Burnley ...	H A					1 1	2 0				2 3		2 1				2 1					
Bury ...	H H		+	+		0 2	0 2						2 1			0 2	5 2				0 3	
Chesterfield	H A	0 2			+				0 3	1 3						3 1		1 1		0 3		1 1
Coventry City	H H		1 1			+		1 0							0 0		3 0	1 1				
Fulham ...	H A		0 0 0 2	2 0 2 0	2 0		+												1 2			1 4 3 2
<b>LUTON TOWN</b>	H H										2 1	2 1		1 4							0 3	
Manchester City	H H	2 4			3 0			1 2	+	1 6							5 0					2 4
Millwall	H H	3 1		0 0	3 1															1 0		3 2
Newcastle United	H A		3 2					1 2		+				2 1	0 0			1 1	0 2			
Norwich City ...	H H	1 3									+			2 1	0 4							
Notts Forest	H H		1 2					1 2				+	0 1	0 3	0 2		2 2		2 1			
Plymouth Argyle	H A							4 1				1 0	3 0	+	+		1 2				2 1	
Sheffield United	H H					0 0					1 2	4 0							2 2		4 3	
Sheffield Wednesday	H A	3 0		2 0	1 3						0 0	2 0							3 3	2 0		3 2
Southampton ...	H H		1 2	2 5		0 3							2 2	2 1		+			1 2			
Swansea Town	H H	0 4	1 1		1 1		1 1			1 1								+				
Tottenham Hotspur	H A					2 1			0 5		1 0		1 2		2 2	3 3				+		
Tranmere Rovers	H A	2 3	0 3				0 1			2 0						0 2	2 1				+	
West Bromwich A.	H A							3 0				5 2	3 4	1 2								
West Ham United	H A	1 2 1 3		1 1		4 1	2 3		4 2		1 5	3 2			2 3						+	+



## FIXTURES, 1938 - 9

FIRST XI Division II		F. A.	
Sat., Aug. 27	West Bromwich Albion	4 1 A	0 3
Wed., .. 31	Newcastle United	4 1 H	2 1
Sat., Sept. 3	Norwich City	1 1 H	2 1
Mon., .. 5	Coventry City	1 2 A	0 1
Sat., .. 10	Manchester City	4 2 A	2 1
Sat., .. 17	Plymouth Argyle	4 2 A	1 4
Sat., .. 24	Sheffield United	2 3 H	
Sat., Oct. 1	Burnley	2 3 A	
Sat., .. 8	Tottenham Hotspur	2 4 H	
Sat., .. 15	Bradford	4 2 H	
Sat., .. 22	Swansea Town	1 1 A	
Sat., .. 29	Blackburn Rovers	4 1 H	
Sat., Nov. 5	Tranmere Rovers	2 2 A	
Sat., .. 12	West Ham United	4 3 A	
Sat., .. 19	Bury	2 2 H	
Sat., .. 26	Sheffield Wednesday	2 2 H	
Sat., Dec. 3	Fulham	1 4 A	
Sat., .. 10	Chesterfield	1 1 H	
Sat., .. 17	Millwall	.. A	
Sat., .. 24	West Bromwich Albion	.. H	
Mon., .. 26	Nottingham Forest	0 1 A	
Tues., .. 27	Nottingham Forest	2 2 H	
Sat., .. 31	Norwich City	4 0 A	
Sat., Jan. 7	Manchester City	.. H	
Sat., .. 14	Plymouth Argyle	1 1 H	
Sat., .. 21	Sheffield United	0 2 A	
Sat., Feb. 4	Burnley	3 1 H	
Sat., .. 11	Tottenham Hotspur	0 3 A	
Sat., .. 18	Bradford	1 1 A	
Sat., .. 25	Swansea Town	5 1 H	
Sat., Mar. 4	Blackburn Rovers	2 2 A	
Sat., .. 11	Tranmere Rovers	.. H	
Sat., .. 18	West Ham United	0 0 A	
Sat., .. 25	Bury	0 1 H	
Sat., April 1	Sheffield Wednesday	0 4 A	
Fri., .. 7	Southampton	1 3 H	
Sat., .. 8	Fulham	4 0 H	
Mon., .. 10	Southampton	6 3 A	
Sat., .. 15	Chesterfield	2 5 A	
Sat., .. 22	Millwall	.. H	
Sat., .. 29	Newcastle United	3 1 A	
Sat., May 6	Coventry City	1 4 H	

## LEAGUE TABLES

## LEAGUE DIVISION II

	Pld.	Won	Lost	Drn.	For	Agst.	P.
Blackburn Rovers	7	6	1	0	18	7	12
Fulham	7	4	1	2	9	5	10
Sheffield United	6	3	0	3	12	5	9
Sheffield Wednesday	6	4	1	1	14	8	9
Millwall	6	3	1	2	13	6	8
West Brom. A.	7	4	3	0	19	15	8
Tottenham Hotspur	6	3	1	2	11	9	8
Burnley	7	3	2	2	9	9	8
Bradford	6	3	2	1	12	11	7
Newcastle United	7	3	3	1	13	12	7
Plymouth Argyle	6	3	3	0	12	8	6
Coventry City	6	2	2	2	7	7	6
LUTON TOWN	6	3	3	0	7	11	6
West Ham United	7	2	4	1	15	15	5
Notts Forest	6	2	3	1	6	10	5
Manchester City	6	2	4	0	14	16	4
Tranmere Rovers	6	2	4	0	7	9	4
Bury	6	1	3	2	6	10	4
Swansea Town	6	0	2	4	4	13	4
Southampton	6	1	4	0	8	15	3
Chesterfield	6	1	4	1	5	12	3
Norwich City	6	1	5	0	6	14	2

## RESERVE FIXTURES London Combination F. A.

Sat., Aug. 27	Brighton & Hove A.	6 2 H	2 1
Mon., .. 29	Millwall	0 3 A	5 1
Sat., Sept. 3	Bournemouth	1 1 A	3 1
Wed., .. 7	Tottenham Hotspur	0 2 H	1 1
Sat., .. 10	Watford	2 0 H	1 2
Sat., .. 17	Southend United	3 1 H	4 0
Mon., .. 19	Tottenham Hotspur	3 5 A	2 2
Sat., .. 24	Queens Park Rangers	0 4 A	
Wed., .. 28	Southampton	2 0 A	
Sat., Oct. 1	Chelsea	1 1 H	
Wed., .. 5	Leicester City	0 1 H	
Sat., .. 8	Charlton Athletic	0 4 A	
Mon., .. 10	Leicester City	1 4 A	
Sat., .. 15	Fulham	1 5 A	
Sat., .. 22	Brentford	0 0 H	
Sat., .. 29	Arsenal	0 1 A	
Sat., Nov. 5	Clapton Orient	3 0 H	
Sat., .. 12	Portsmouth	0 0 A	
Sat., .. 19	West Ham	0 1 H	
Sat., .. 26	Northampton Town	1 1 A	
Sat., Dec. 3	Bristol City	3 1 H	
Sat., .. 10	Swansea Town	1 0 A	
Sat., .. 17	Crystal Palace	6 1 H	
Sat., .. 24	Brighton & Hove A.	1 1 A	
Mon., .. 26	Southampton	2 1 H	
Sat., .. 31	Bournemouth	2 1 H	
Sat., Jan. 7	Reading	3 1 H	
Sat., .. 14	Watford	2 3 A	
Sat., .. 21	Southend United	0 4 A	
Sat., .. 28	Queens Park Rangers	2 2 H	
Sat., Feb. 4	Chelsea	2 6 A	
Sat., .. 11	Charlton Athletic	2 0 H	
Sat., .. 18	Fulham	3 0 H	
Sat., .. 25	Brentford	0 3 A	
Sat., Mar. 4	Arsenal	1 2 H	
Sat., .. 11	Clapton Orient	7 0 A	
Sat., .. 18	Portsmouth	1 2 H	
Sat., .. 25	West Ham	1 1 A	
Sat., April 1	Northampton Town	3 3 H	
Fri., .. 7	Coventry City	0 1 A	
Sat., .. 8	Bristol City	2 3 A	
Mon., .. 10	Coventry City	4 0 H	
Sat., .. 15	Swansea Town	1 1 H	
Sat., .. 22	Crystal Palace	3 1 A	
Sat., .. 29	Millwall	5 1 H	
Sat., May 6	Reading	4 1 A	

## LONDON COMBINATION

	Pld.	Won	Lost	Drn.	For	Agst.	P.
Watford	8	6	0	2	16	8	14
Chelsea	7	6	0	1	19	5	13
Arsenal	7	5	1	1	30	10	11
Queens Park Rangers	8	5	2	1	22	8	11
Tottenham Hotspur	7	4	1	2	15	6	10
LUTON TOWN	7	4	1	2	18	8	10
West Ham United	8	4	3	1	20	18	9
Southend United	7	4	2	1	14	13	9
Fulham	8	3	2	3	11	11	9
Coventry City	7	4	3	0	18	8	8
Portsmouth	7	3	2	2	18	12	8
Brentford	7	3	2	2	13	9	8
Leicester City	8	3	3	2	17	16	8
Charlton Athletic	8	3	3	2	11	13	8
Bristol City	8	4	4	0	15	20	8
Crystal Palace	6	2	1	3	15	9	7
Swansea Town	8	2	4	2	8	13	6
Bournemouth	8	1	4	3	13	19	5
Northampton	8	2	6	0	8	16	4
Millwall	8	1	5	2	8	25	4
Southampton	7	1	5	1	10	24	3
Brighton & Hove A.	6	1	5	0	6	15	2
Clapton O.	8	0	6	2	6	22	2
Reading	7	0	6	1	8	31	1

# Edward Martell

## & Co., Ltd.

TELEPHONE

896-7

Coal and Coke Merchants

ESTABLISHED

1879

24, UPPER GEORGE STREET, LUTON

## Burn "Hucknall" Ashless Coal

### It Scores Every Time!!

Popular Price! Saves Labour!! Great Heat!!!

WHY NOT TRY IT?

## CARRY ON

## LUTON TOWN!

a packet of

## SWEET

## ROSEMARY

TOBACCO

is always enjoyable

## W. & F. FAULKNER

## LONDON

BRANCH OF THE IMPERIAL TOBACCO CO.  
(OF GREAT BRITAIN AND IRELAND), LIMITED

## KODAK, ENSIGN & AGFA CAMERAS & FILMS

Developing, Printing  
and Enlarging by  
experts, high class  
work at reasonable  
prices

## A. G. PRATT

M.P.S., F.S.M.C.

PHOTOGRAPHIC CHEMIST  
AND OPTICIAN

169, DUNSTABLE ROAD, LUTON

PHONE 708



# Your Goal for all Sports Goods PARTRIDGE'S

The House for Guaranteed  
SPORTS GOODS

FOOTBALLS - JERSEYS - KNICKERS - HOSE  
SHINGUARDS - BOOTS - GOAL NETS - KIT BAGS

Every requisite at lowest prices. Send for  
our Winter Sports List today. It is free.

*Special Terms to Clubs*

*A. G. Partridge & Co*  
PHONE 234 10-12 CHAPEL ST.  
LUTON

*You need*

**EASY-RUNNING  
& RELIABILITY**



NO CYCLE IS  
COMPLETE  
WITHOUT THE  
FAMOUS STUR-  
MEY - ARCHER  
3-SPEED GEAR.

*in the Country!*

**MODELS FROM £5:10:0 CASH**

(Sturmey-Archer 3-speed gear 21/- extra, cash)

Deferred Terms from

**5/-** down and 12 equal monthly payments (from  
10/7). Sturmey-Archer 3-speed gear 2/1 extra,  
monthly. Call for "The Book of the Raleigh."

**RALEIGH**  
THE ALL-STEEL BICYCLE

Printed by E A Allen, 424, Dunstable Road, Luton. 'Phone 1626.

Published by Luton Town Football and Athletic Co., Ltd., Kenilworth Road, Luton.