

# GENONI'S

*SWISS RESTAURANT*

OPPOSITE ROYAL CINEMA

Phone Plymouth 488811

LICENSED

Open until 11 p.m.

FOR A PERFECT

*LUNCH or DINNER*

Nº 1585



**HOME PARK**

Saturday, SEPT. 17th, 1938

THE FOOTBALL LEAGUE—Div. II.

**PLYMOUTH  
ARGYLE**

VERSUS

**LUTON TOWN**

Kick-off 3-15 p.m.

# WAKELING'S

For all SPORTS GOODS and Best Value

**FOOTBALL, HOCKEY, BADMINTON,  
SQUASH, TABLE TENNIS, DARTS,  
GOLF**

**18, George St., Plymouth**

Phone 5991.

ADLARD BROS., PRINTERS, PLYMOUTH. 35374



O

B



*Here's the Best*  
**OCTAGON  
 BEER**

O

B

# PICKFORDS

## REMOVAL SERVICE



**COVERS  
 THE COUNTRY**

Full information from

**10, Whimble Street, PLYMOUTH**  
 TELEPHONE 3165

# Levy & Sloggett Ltd.

*Jewellers  
 Since 1812*

See our selection of New and Second-hand JEWELLERY, WATCHES, SILVER, CUTLERY, and OPTICAL GOODS. We specialise in ENGAGEMENT RINGS, & "ROTARY" WATCHES. Bring us your Old Gold and Silver.

Cash Advanced  
 on Articles of  
 Value

**190 UNION STREET,  
 PLYMOUTH**

(80 Yards from DERRY'S CLOCK.)

Valuations of  
 every  
 description

## Plymouth Argyle Football Co., Ltd.

President: A. C. BALLARD, Esq.

Directors:

Major J. CLIFFORD TOZER (Chairman)

Mr. C. N. SPOONER (Vice-Chairman)

Mr. C. E. B. M. SMITH (Hon. Treasurer)

Mr. J. H. ANDREW. Lt.-Col. R. V. HUNT Lt.-Col. T. R. McCREADY.

Mr. R. H. ATWILL. Mr. F. G. LEATHERBY. D.S.O., M.C.

Mr. G. A. DINGLE. Mr. ARTHUR MANICO. Mr. T. R. NICHOLLS.

Mr. W. A. SAGE. Mr. B. T. R. SHELTON.

Hon. Medical Officers: Mr. RICHARD HOWARTH, Dr. DONALD CAMERON

Secretary-Manager: Mr. J. TRESADERN, Home Park, Plymouth

TELEPHONE NO. 4764.

## OUR PRIZE SCHEME !!

In conjunction with the Proprietors of the Palace Theatre and Picture Theatres of the City, we are enabled to present an interesting scheme in connection with our Programme.

Each copy will bear a number on the Front Cover, and Five Numbers will be selected at every FIRST TEAM game.

The numbers will be announced through the Loud Speakers during the Interval at each match, and a programme bearing any Number so announced will be EXCHANGED for a Ticket which entitles the holder to Free Seats to the (1) Palace Theatre, (2) Regent Cinema, (3) Gaumont Palace, (4) Royal Cinema and (5) Savoy Picture House, on presentation at the Programme Box (near the main entrance), or

ADLARD BROS., PRINTERS, OCTAGON, PLYMOUTH



*Exchanges  
 Easy Payments*

SEND FOR LISTS

**Parker & Smith**  
 THE HOME OF ALL THINGS MUSICAL

**3 Bedford Street  
 PLYMOUTH**



# PLYMOUTH STADIUM

PENNYCROSS  
PEVERELL—PLYMOUTH

GO



RACING

August & September:  
Wed's, Fri's & Sat's  
October: Wed's & Sat's  
November: Saturdays  
at 7-45

Close Season: December and January  
TOTALISATOR AND FORECAST POOLS IN ALL ENCLOSURES  
FIRST-CLASS RACING ASSURED

Admission 1s. & 2s. (including tax) BUSES DIRECT TO STADIUM  
FROM ALL PARTS

**MILLBAY**  
THE  
QUICK-QUALITY

*Cleaners of Clothes*

**SUITS** a Speciality

CLEANED & RESHAPED  
EQUAL TO NEW

Satisfaction Guaranteed or no charge made

PHONE 4033

or write and one of our 50 Vans  
will collect.

## HALF-TIME CODE

A—Bradford v. Blackburn Rovers	0	1
B—Burnley v. West Bromwich Albion	0	0
C—Chesterfield v. Sheffield Wednesday	1	0
D—Manchester City v. Millwall	1	0
E—Sheffield United v. Norwich City	2	0
F—Southampton v. Nottingham Forest	2	1
G—Swansea Town v. Fulham	1	0
H—Tottenham Hotspur v. Newcastle United	1	0
J—Tranmere Rovers v. Bury	1	0
K—West Ham United v. Coventry City	1	0
L—Aston Villa v. Brentford	1	0
M—Bolton Wanderers v. Liverpool	1	0
N—Everton v. Portsmouth	2	1
O—Stoke City v. Manchester United	0	0
P—Sunderland v. Blackpool	1	2
Q—Wolverhampton Wan. v. Arsenal	0	1
R—Bristol City v. Torquay United	0	3
S—Exeter City v. Bristol Rovers	0	0

Match played on ground of first-named Club.

In each case the score of the Home Team is given first.

TOP OF UNION STREET

**HAIRDRESSING!** LADIES SALOONS, 16 cubicles  
GENTLEMENS SALOONS

Expert Staff of Male and Female Assistants  
THE FAMILY HAIRDRESSERS. We cater for all branches of Hairdressing; Ladies,  
Gentlemen & Children. Open all day from 8-30 a.m. 8 o'clock Saturday  
MACDONALD AND EUGENE PERMANENT WAVING  
WRIGHT EXPERT SERVICE MANICURE

**SHAVING EQUIPMENT!** If you would have a really good shave  
you must have the (W)RIGHT equip-  
ment. We, as fully qualified Hairdressers, can give you expert advice on Razors, Safety  
Razors, Shaving Brushes, Strops, etc. Take advantage of expert advice and purchase  
at WRIGHT'S. Agents for all makes of Electric Razors.

**A. W. WRIGHT** (Established 70 years) 6 UNION ST., PLYMOUTH  
(S. R. WRIGHT) Phone 2448 Under the Clock in Union Street.



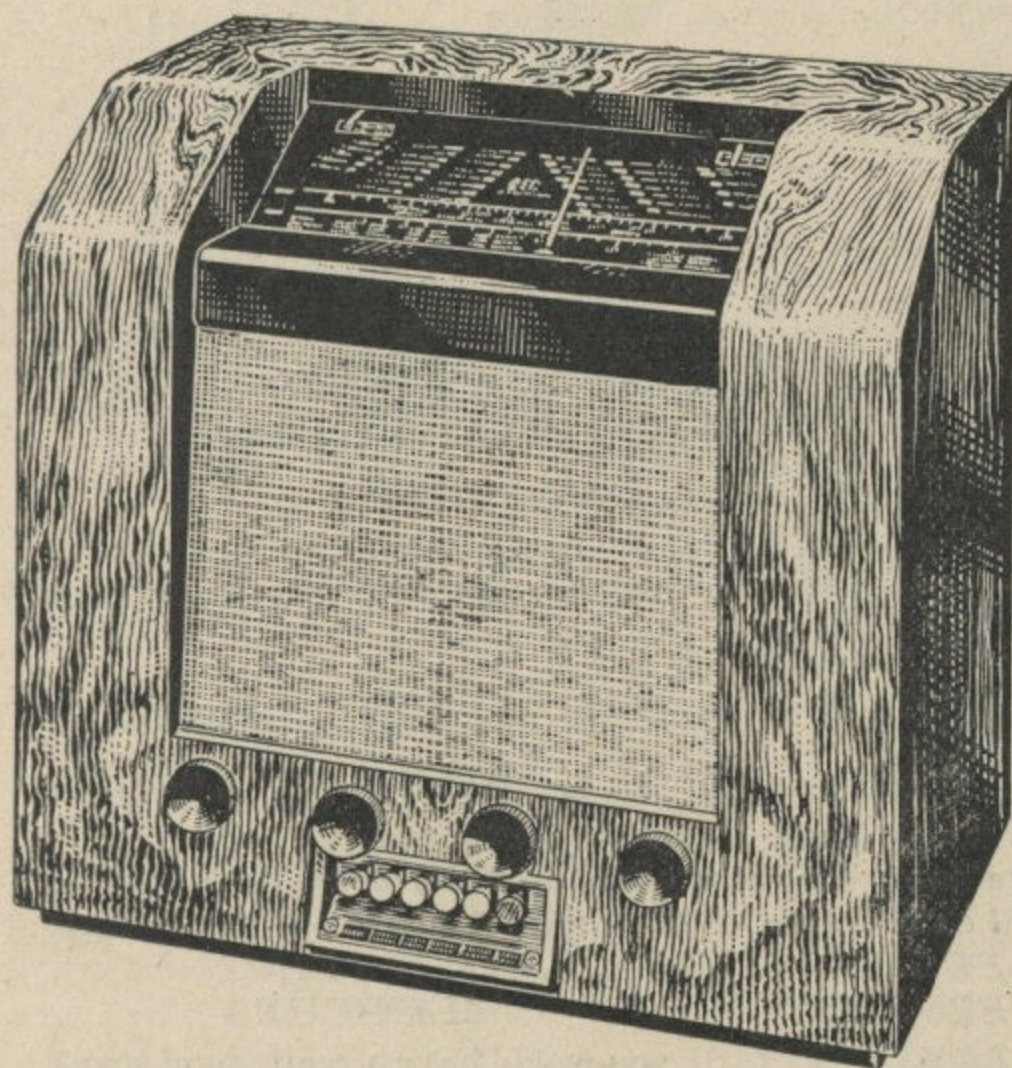
# S.E.C.

SOUND AMPLIFYING EQUIPMENT  
INSTALLED AT HOME PARK BY

# ARTHUR BRAND

MUTLEY PLAIN

## FAMED FOR RADIO



**S.E.C.**  
**TOUGH TUNE**  
**5**

THESE de luxe five-valve three-band superhets embody "Touch-tuning," allowing any of five chosen stations to be obtained instantaneously by pressing a button. Automatic two-speed tuning, high fidelity reproduction, facilities for an extension speaker, pick-up terminals and short-wave entertainment are also special features. The cabinet is of walnut, richly finished. OSRAM International Valves.

12½ Gns. or  
FROM **3/9** WEEKLY

A REVELATION

Phone 5678 for a FREE DEMONSTRATION



## PALE ALE

NO SEDIMENT!  
YOU CAN DRINK IT ALL!!

THE PLYMOUTH BREWERIES, Ltd.

### PLYMOUTH ARGYLE NOTES

We have now played three matches away from Home Park ; on each occasion we have lost by the odd goal, but those who have watched the matches will agree that in neither game should Argyle have finished on the losing side.

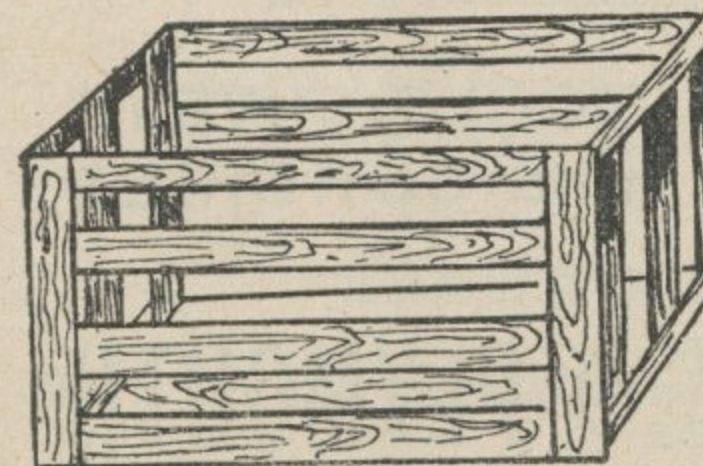
The result of the match at Norwich was definitely against the run of play. Even the brilliance of Duke in the Norwich goal would have been powerless had certain of our forwards possessed a shot when needed. Bad luck was mainly responsible for Argyle returning from Southampton pointless. On two occasions during the last twenty minutes, the Southampton crossbar was struck, and on other occasions only the agility of Warhurst prevented goal-scoring shots taking effect. Warhurst was at the top of his form.

We hope the team will return to winning vein to-day, when Luton Town provide the opposition. Last Saturday Luton provided the sensation of the day by winning against Manchester City at Maine Road.

### OUR VISITORS—LUTON TOWN.

It is not generally known that Luton Town, whom we welcome to Home Park this afternoon, is one of the oldest professional football clubs in the South of England, having been in existence since 1885, and embracing professionalism five years later. The Club has experienced many vicissitudes, and there have been occasions when the future was anything but bright. From 1897-98 to 1899-1900 the "Strawplaiters" enjoyed Second Division status. Then followed a long term of membership in the Southern League, but the lost status was regained twelve months ago, when the club headed the Southern Section with 58 points, their nearest rivals being Notts County with two points less.

Luton finished level with Argyle in the League Table last season, holding the distinction of having scored more goals than any other club in the Division, but also possessing the unenviable record of having had more goals scored against them than any of their competitors. In an effort to strengthen the defence, it is hoped that Dunsmore, who made 16 appearances with Hibernian in the Scottish League last term, will make a big difference, whilst Carroll, who appeared on 29 occasions with Leicester City in the First Division, should prove an acquisition in the attack.



For Crates, Barrels, Boxes & Cases  
of every description MADE TO ORDER

consult:  
**EDRED MARSHALL**

Works and offices:  
**Sutton Road, PLYMOUTH**

Phone 5166 Prices on Application



OPPOSITE DERRY'S CLOCK  
**WILLIAMS' RESTAURANT**

199, UNION STREET, PLYMOUTH

*Customers are Our Best Advertisement*

THEY EAT  
 THEY SMILE  
 THEY TALK

*We are the Pioneers of the Best and Cheapest Meals  
 Anything from a Snack to a Banquet*

**Hot or Cold  
 Special Course  
 Luncheons**

Served from 12 to 2-30 p.m.  
 Ranging from 1/- to 2/6

**Special Teas,  
 Sweet or  
 Savoury**

67 varieties for your  
 selection, ranging from  
 6d. to 2/6  
 Served at All Times

**Special Course  
 Suppers**

From 7 p.m. Ranging  
 from 1/6 to 2/6

Licensed for Wines and Beers of all descriptions; Bass's Mild and Bitter on Draught  
 Bass, Worthington and Guinness in Bottle; Ciders; Iced Lagers; Wine Cocktails

*Let us Quote you for Dinners, Dances, Children's and other Parties. Moderate Charges*

**SUNDAY SERVICE 10 A.M. TO 9-30 P.M.**

**JOHN TAYLOR & SONS**

PLYMOUTH,  
 LTD.

THE HOME REPAIRERS' STORE  
 FOR

**LEATHER**

SINCE  
 1830

RUBBER SOLES  
 and HEELS

TOOLS, RIVETS  
 and SUNDRIES

FLORA STREET (NEAR GAUMONT PALACE) PLYMOUTH

**JOHN YEO**

& COMPY., LTD,

PLYMOUTH

Phone 3243-4

FOR

**MEN'S OUTFITTING**

SHIRTS, UNDERWEAR, PYJAMAS, PULLOVERS,  
 SLIPOVERS, CARDIGANS, ETC.

*Large Selections*

*Excellent Value*

**PLYMOUTH ARGYLE NOTES**

Hugh Billington, centre-forward of Walterlows (Dunstable), the Spartan League champions, is expected to make rapid progress to senior status and it seems certain that Campbell, a London youngster, will eventually become a first-class half-back.

Raymond Samuels, a full-back from Aberaman, is also expected to achieve the highest grade, and in relation to one or two others a chance has been taken. J. Wale, a young pivot who was with Boscombe last season, and C. Clark, an inside forward from Queen's Park Rangers, have been signed largely on the strength of their performances against Luton in London Combination games last season.

**En Passant**

ARGYLE'S GOAL-SCORERS to date are :

Football League  
 Division II.  
 Hullett .... 5  
 Wharton .... 2  
 Lane .... 1

Southern League.  
 Thomas .... 4  
 Brown .... 2  
 Mailey .... 2  
 Dougan (T.) .... 2  
 Vidler .... 1  
 McNeil .... 1  
 Ryan .... 1  
 Dougan (W.) .... 1  
 Hutchinson  
 Torquay Utd., o.g. 1

Total .... 8

Total 15

**INSIST ON THE ORIGINAL**

**DOUBLE BROWN ALE**

BREWED AND BOTTLED

BY THE PLYMOUTH BREWERIES, LIMITED.



# WAKE UP YOUR LIVER BILE

*without Calomel — and you'll jump out of bed in the morning full of vim and vigour*

**Y**OUR LIVER should pour out two pints of liquid bile into your system daily. If this bile is not flowing freely, your food doesn't digest. It just decays inside you. Gas bloats up your stomach. You get constipated. Your whole system is poisoned and you feel sour, sunk, and the world looks punk.

Laxatives help a little, but a mere bowel movement doesn't get at the cause. It takes those good old Carters Brand Little Liver Pills to get these two pints of bile flowing freely and make you feel "up and up." Harmless, gentle, yet amazing in

making bile flow freely. Ask for Carters Little Liver Pills. Stubbornly refuse anything else. 1/3 and 3/- at all chemists.

**NOW ALSO IN  
PENNY WORTHS  
EVERYWHERE**

Second Hand Diamond Goods  
Speciality  
Old Silver and Old Sheffield Plate  
Valuations for Probate  
Buyers of Old Gold and Silver

**Richard B. Wigfull  
and Son**

JEWELLERS, SILVERSMITHS  
AND ANTIQUE DEALERS  
WATCH REPAIRS  
OFFICIAL "OMEGA" WATCH DISTRIBUTORS

Windsor Lane, Princess Square

Shortest thoroughfare to the  
Hoe and Sea Front

**PLYMOUTH**

Phone 5581

Established 1900

VISITORS TO PLYMOUTH  
SHOULD TRY ITS MOST  
FAMOUS PRODUCT

**PLYMOUTH  
GIN**



THE  
QUALITY DRY GIN

**AFTER THE MATCH**

VISIT

**Goodbodies**

C  
A  
F  
É  
S

**BEDFORD STREET, GEORGE STREET & MUTLEY**

**PLYMOUTH ARGYLE NOTES**

**DEVON PROFESSIONAL CHAMPIONSHIP.**

The Semi-final of this competition will take place at Home Park, on Wednesday, September 28th, kick-off 5-30 p.m., the contestants being Argyle and Exeter City. The final will be played on October 5th, the venue for which will be determined after the Semi-final tie. Each side will field its best available strength. Prices of admission will, of course, operate as for First team matches, viz., Ground 1s., Wing Stand or Enclosure 2s., and Centre-Stand 3s. Juveniles half-price to all parts.

**UNLUCKY COLOURS !**

Last season Burnley decided to make a change in their colours for games in which they required a different stripe to prevent clashing with their opponents. They chose red and white stripes. This season they have reverted to their former colours because, it is said, the players were getting superstitious. On thirteen occasions last season they wore the red and white colours, and the sum total from these thirteen games was—one point ! Burnley, with Tom Gardner, of Aston Villa fame, in the intermediate line are regarded as a much improved side this term, and appear at Home Park on October 8th—our next First team home match, with Manchester City the following week.

The Stand at Home Park. The New Police Headquarters, Fire Station and Magistrates' Court, etc., The New Bathing Houses, Promenade and Retaining Wall at Tinside  
WERE BUILT BY

**J. W. SPENCER**

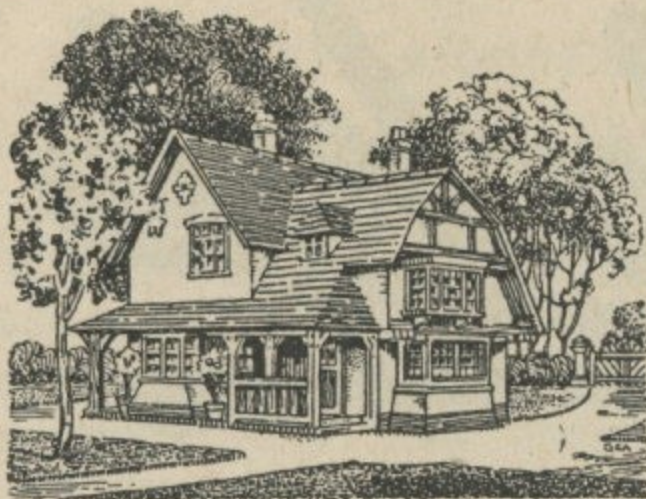
**BUILDING CONTRACTOR**

**St. Lawrence Yard, PLYMOUTH.**

Phone  
5589

ON ADMIRALTY, WAR OFFICE, AIR MINISTRY & OFFICE OF WORKS LISTS.  
WE ALSO CONTRACT FOR ENGINEERING WORK AND THE BUILDING  
OF LARGE AND SMALL MODERN RESIDENCES.





## BE A LANDLORD NOT A TENANT!

Buy **YOUR OWN** House  
the First step  
to Economic Freedom

Consult the

**Devonport Permanent Benefit Building Society**  
**6, Chapel Street, DEVONPORT**

THIS SOCIETY WILL GLADLY HELP YOU AND OFFERS  
**SPECIAL FACILITIES** FOR SAVING THE INITIAL DEPOSIT

Established 1850.

Telephone No. DEVONPORT 288.

### ALL CLASSES OF INSURANCE EFFECTED

by **J. R. LUGAR**, Successor to and Trustee for the Estate of the late F. A. C. BLACKALL.

Insurance Broker, House and Estate Agent,

**DEVONPORT CHAMBERS, 6, CHAPEL STREET, DEVONPORT.**

## JOIN THE INDEPENDENT ORDER OF ODD FELLOWS

MANCHESTER UNITY

FOR

**SICKNESS  
ENDOWMENT**

**ANNUITY  
FUNERAL**

**WIDOW & ORPHAN BENEFITS**

The Best Society for **NATIONAL HEALTH INSURANCE**

Full particulars can be obtained from any Lodge Secretary  
or at the

**ODD FELLOWS HALL, UNION ST., PLYMOUTH**

## Go to **SNELL'S** THE HOUSE OF WHEELS

MOTOR CARS, MOTOR CYCLES, CYCLES, SKATES, etc.

Terms to Suit Your Income. Nothing Barred.  
See Us Before Deciding.

95/97 Old Town St. 34/36 St. Andrew St. 1 Frankfort Buildings  
**PLYMOUTH** Dial 3706.

### Supporters' Club Notes.

**MILLWALL EXCURSION**—Friday Next, September 23rd.

There is every indication that Argyle will have a good following for this match in London. The Committee have arranged a Special Excursion. Fare 18/3 return, leaving Plymouth (Millbay) on Friday evening and returning early Sunday morning. Intending Excursionists are invited to obtain their Tickets in advance and Seat or Compartment Reservations may be made without extra charge on application to the Secretary, 29, Trevarthian Terrace, Milehouse, or at the Supporters' Club office **To-day**. Full particulars from Handbills.

**Manchester Excursion**—February 18th, 1939. Return Fare 19/3.  
Full particulars in due course.

#### Club Ties.

A very attractive design of Gents' Neck-Ties has been prepared embodying the Club Colours, a specimen of which may be seen at the Supporters' Club Office. They are on sale **Now** at Messrs. E. Dingle & Co., Ltd. Bedford St., Plymouth. Price 2/6 each.

#### Pennants.

The Committee now have on sale a Neat Pennant in Club Colours for fixing to the bonnets of Motor Cars, the handle bars of Cycles and the Mudguards of Motor Cycles. Supplies are limited and may be obtained at Home Park any match day.

Prices as follows:—Motor Cars 1/3. Cycles 6d. Motor Cycles 9d.

The Pennants are mounted on Special Fittings which obviate the necessity of drilling holes and are easily fixed.

#### Cushions.

Don't forget to order your Season Ticket **NOW**. Price 3s.

#### Members' Annual Subscriptions—1938-39.

These are now due and can be paid to any member of the Committee. We also welcome New Members who may be enrolled at Supporters' Club Office.

PLAYERS  
INVITED



AFTER THE MATCH—DANCE AT THE

## PARAMOUNT BALLROOM

(opposite Gaumont)

The City's Centre of Amusement

Special late **SPORTS CLUB DANCES** 7-45 to 11-45 p.m.  
SEE PRESS—REASONABLE CHARGES

featuring **Leon Shortt's Orchestra**

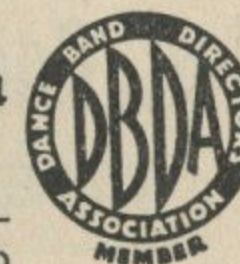
AS BROADCAST BY THE B.B.C.

LATE CARS ARRANGED

CAFE

**DANCING EVERY EVENING**

'Phone 4850





## BALKWILL & CO.

PROPRIETOR: B. T. R. SHELTON, M.P.S.

Chemists

106, OLD TOWN STREET, PLYMOUTH  
SURGICAL SPECIALISTS

Elastic Knee Caps . . . Anklets,  
Belts, Trusses, Etc.

ALL NIGHT SERVICE PHONE 4331

## The Sports Specialist

FOR

Football Rugby Hockey  
Badminton Golf Squash  
Darts Billiards Table Tennis

IS

## RAYMOND BOWDEN

Cobourg St., Plymouth

Phone 3566.

There's NO Better Licensed  
House in the City

BURTON ALES ONLY

## TOWNHALL HOTEL

(Westwell Street)

PLYMOUTH'S POPULAR LOUNGE  
AND BARS.

CLEAN! MODERN! BRIGHT!

TRY US FOR COMFORT, SERVICE,  
MUSIC AND SNACKS.

Before and after  
the Match—**DRINK**  
Ind Coope & Allsopp  
**THE POPULAR  
BEER**

FOOTBALL HOCKEY! BADMINTON!

## NICHOLS & Co., LTD.

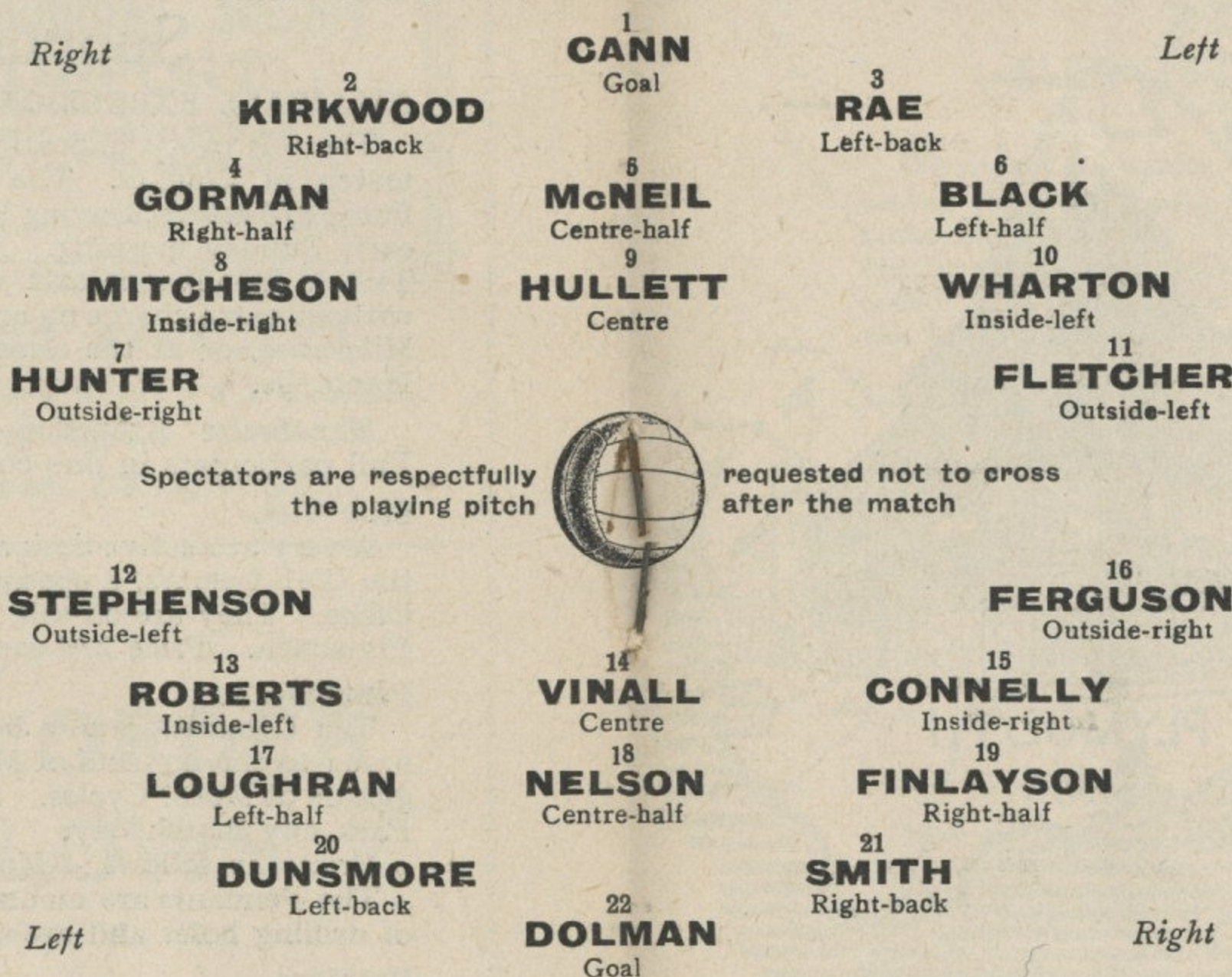
Specialists in all Sports.

Official suppliers of the Ball used in each match  
Illustrated Catalogue FREE on Application

148, UNION STREET, PLYMOUTH PHONE 5605

### PLYMOUTH ARGYLE

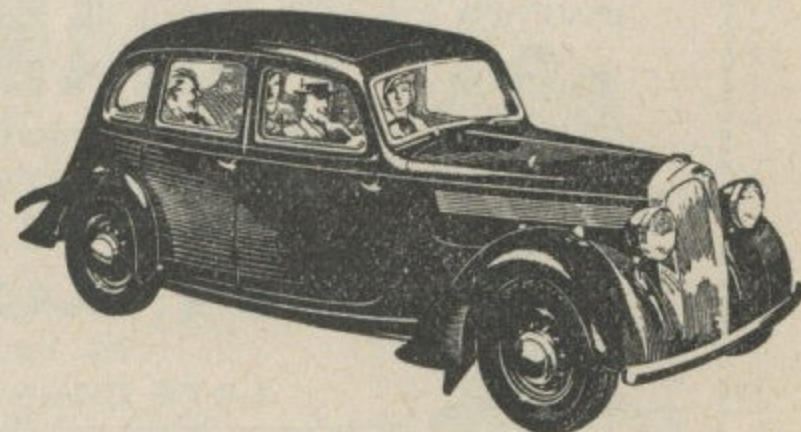
Colours—Green jerseys, (black collars and cuffs), white knickers



### LUTON TOWN

Colours—White jerseys (black collar and cuffs), black knickers

Referee—Mr. L. E. GIBBS, Reading.  
Linesmen—(blue flag) Mr. W. J. EDWARDS, Yeovil.  
(red flag) Mr. T. C. GUNNING, Bristol.



PRICES FROM: £149 10 0 (EX WORKS)

## SINGER Cars & Vans

### M. THOMAS

20 Woolster Street  
PLYMOUTH

PHONE 3003/5

Renowned throughout the Westcountry  
for Tyre Service

## G. BOUNTY

Tyre Repairing & Fitting. Remoulding.  
Guaranteed Retreading & Vulcanizing.  
Reseating. New Valves Fitted.

7, Frankfort Lane, Plymouth

Telephone 2626

Every make of NEW TYRE fitted while  
you wait

SPORTSMEN!—KEEP FIT  
by Drinking

## X.L. DAIRY MILK

Our Own Local Dairy Farms

DEVONSHIRE CREAM

A Speciality

CROWNHILL, PLYMPTON, PLYMSTOCK  
and ST. BUDEAUX DELIVERIES

PHONE: PLYMOUTH 2649

## Atwills

R. ATWILL AND SON LIMITED

ESTD  
1863

38 RUSSELL STREET  
PLYMOUTH

PHONE  
60268

HARDWARE FURNISHERS

WORKS DEPT. Frankfort Sq.

REPAIRS and RENEWALS  
all Trades.

## FARLEY HOTEL

UNION STREET

Luncheons, Dinners, Suppers and Grills

THE SNACK BAR OF THE WEST

FULLY LICENSED  
BARS AND LOUNGES

Assembly Rooms for Private and  
Club Dinners, Smoking Concerts, Etc.



# SPOONERS

The  
**Men's Department**  
on the Ground Floor  
is entered direct from  
**East Street**



PLYMOUTH

- Covering the famous counties of Devon & Cornwall with an unrivalled shopping service—Spooners stands supreme for policy, equipment, staff and standard of merchandise

**PLYMOUTH'S LEADING STORE**

'Phone  
28141

For SAFETY and SERVICE

FILL UP IN THE DRY AT

## Grants' Super Covered Ways PETROL FILLING AND SERVICE STATION

(PLYMOUTH-YELVERTON MAIN ROAD)

BRANCH AT HENDER'S CORNER, MANNAMEAD

We are the oldest Established Motor Engineers in the District. A.A. & R.A.C. appointed  
Dealers: AUSTIN, MORRIS AND FORD CARS

CELLULOSE SPRAYING, COACH PAINTING, NEW HOODS, Etc.

Phone Nos.: PLYMOUTH 60284 CROWNHILL 71116

**BREAKDOWN AMBULANCE ALWAYS READY**

## SUPPORTERS' CLUB NOTES (continued)

The late Mr. George Freeman.

We regret to announce the passing of a very familiar and popular Steward, also a prominent and hard-working Committeeman of the Supporters' Club since its inception. To Mrs. Freeman and family we extend the sincere sympathy of all Argyle Followers. No greater appreciation of his services could have been shown than the representative gathering who attended the funeral on Wednesday last.

### LADIES COMMITTEE—Winter Social Programme.

The following functions will take place and a cordial welcome is extended to all Members, Players and Argyle followers to attend. An enjoyable evening is assured.

1938.

Sept. 21st Whist Drive (32 hands) St. Gabriel's Hut. Hyde Park, Ply.

Oct. 12th Whist Drive (32 hands) and Dance.

Hyde Park Assembly Rooms, Plymouth.

Nov. 9th " " " " " " " " " " " "

Dec. 14th " " " " " " " " " " " "

**BOOK THESE DATES ! !**

Tickets—Whist only 1s. Whist and Dance 1s. 6d.

May be obtained from any Member of the Ladies' Committee or at Home Park on match days.

**DON'T FORGET THE FIRST WHIST-DRIVE ON WEDNESDAY NEXT.**

### Thrift Club.

To all those who wish to join in the various activities of the Supporters' Club we recommend our Thrift Club. Weekly Payments will be gladly received by the Treasurer on Match Days. Organisers of Parties for our Excursions will be supplied with official Receipt Cards (free) if application is made.

## ARNOLD'S SEEDS

SEED POTATOES, BULBS, FERTILISERS,  
HORTICULTURAL SUNDRIES, BEE SUPPLIES

*BEST IN THE WEST*

Telephone 5555



*Everybody's*

**GOAL!**



SHOOT STRAIGHT FOR

# The Holmes Estates

AND A

HOME OF YOUR OWN

Numerous Types of Houses of

**OUTSTANDING SUPERIORITY**

In all the Best Parts of the City

**£520, £575, £610, £650, £725,  
£740, £825, £860, £925, £1125**

At Ridiculously Low Inclusive Terms

- Modern
- Healthy
- Hygienic

HOUSES ARE BUILT  
HOUSES ARE SOLD  
**HOLMES HOMES**  
STAND FIRM FOR  
EVER

- Comfortable
- Labour Saving
- Sound

**G. HOLMES,**  
33, Queen Street

Builder, Contractor,  
Complete Undertaker,  
Decorator

## ALL SPORTS REQUISITES

CAN BE OBTAINED AT THE

**PLYMOUTH CO-OPERATIVE  
FURNISHING EMPORIUM**

(SPORTS DEPARTMENT)

**COURTENAY STREET, PLYMOUTH**

*Every kind of Indoor and Outdoor Game Catered for*

## SOUTHERN LEAGUE

Up to and including Saturday, September 10th, 1938.

	P.	W.	L.	D.	Goals		Pts.
					F.	A.	
Colchester United ....	4	4	0	0	13	1	8
Plymouth Argyle ....	4	4	0	0	15	2	8
Guildford City ....	4	4	0	0	14	3	8
Bath City ....	5	2	0	3	7	3	7
Gillingham ....	6	3	2	1	10	10	7
Norwich City ....	5	3	1	1	12	7	7
Bristol Rovers ....	4	2	0	2	8	4	6
Cheltenham Town ....	3	2	0	1	8	4	5
Swindon Town ....	5	2	2	1	6	11	5
Cardiff City ....	4	2	2	0	7	6	4
Exeter City ....	3	2	1	0	3	2	4
Tunbridge Wells Rangers	6	2	4	0	9	12	4
Worcester City ....	6	1	3	2	9	15	4
Folkestone ....	5	2	3	0	4	7	4
Yeovil & Petters Utd,	5	2	3	0	8	15	4
Dartford ....	4	1	2	1	8	5	3
Barry ....	4	1	2	1	4	5	3
Ipswich Town ....	4	1	2	1	3	6	3
Aldershot ....	4	1	3	0	8	12	2
Arsenal ....	4	1	3	0	4	7	2
Chelmsford ....	5	0	3	3	5	9	2
Torquay United ....	5	0	4	1	4	14	1
Newport County ....	3	0	2	1	3	12	1

## A GOOD FIRE

CAN ALWAYS BE OBTAINED AFTER THE MATCH  
IF YOU USE

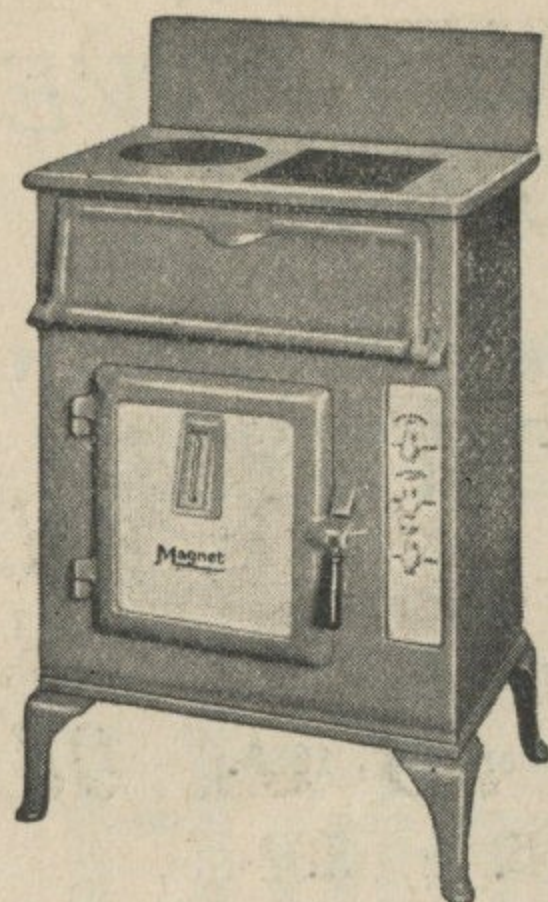
**WESTCOTT'S BEST COALS**

Order Office:-

'Phone 60238



## GOOD POINTS



### ELECTRIC COOKING IS

- economical
- reliable
- clean

Visit the *ELECTRICITY Showrooms*  
where a full range of cookers  
may be seen . . . . .

offices                      TEL:                      showrooms:  
ARMADA ST.      2821      83 OLD TOWN ST.

PLYMOUTH CORPORATION ELECTRICITY DEPARTMENT

# Harris and Sons

DECORATORS  
SHOPFITTERS  
FURNISHERS

PICTURE DEALERS  
STATIONERS  
CHINA AND GLASS

After the match you will be visiting the centre of the City.  
In our picture galleries you will always find something new  
and interesting . . . and visitors are especially welcome.

70, GEORGE ST., PLYMOUTH

## Plymouth Argyle F.C. Ltd. SEASON TICKETS

are still available and may be obtained at the  
Ticket Office.

### PRICES OF THE TICKETS (including Tax)

Ground	-	-	-	£1	0s.	0d.
Wing Stand or Enclosure	£2	0s.	0d.			
Centre Stand (Reserved Seats)	£3	0s.	0d.			
Juveniles' Tickets	10/-;	20/-;	30/-			

WEDNESDAY, SEPTEMBER 28th (ALL PAY)  
DEVON PROFESSIONAL CHAMPIONSHIP—Semi-Final  
(Gold Medal Competition)  
**PLYMOUTH ARGYLE** *versus* **EXETER CITY**  
Kick-off 5-30 p.m.  
Admission 1s., 2s., 3s.      Juveniles 6d. 1s., 1s. 6d.

TELEPHONE: PLYMOUTH 4840

## W. H. WINGATE

F.B.O.A. (HONOURS)

(SIGHT TESTING AND DISPENSING)

OCULISTS' PRESCRIPTIONS

RECEIVE PERSONAL ATTENTION

27A GEORGE STREET

OPPOSITE MESSRS. PAGE KEEN, & PAGE

PLYMOUTH

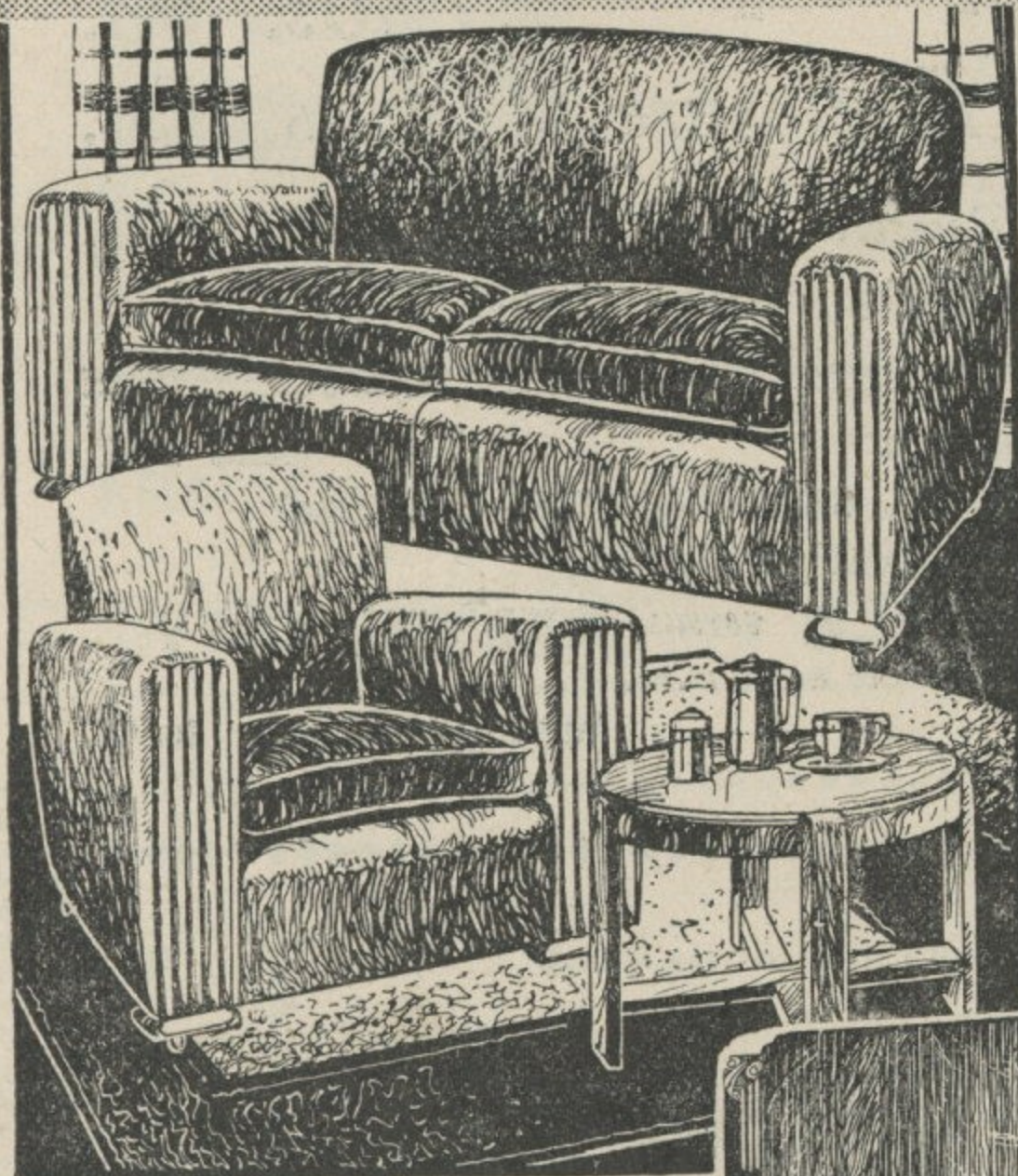


# FURNITURE

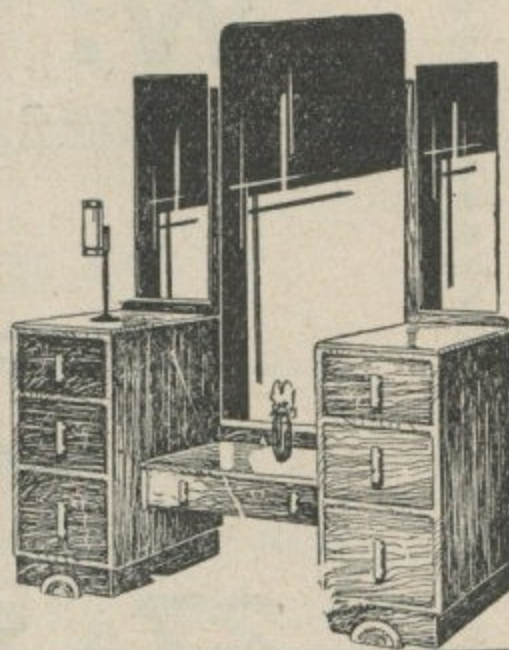
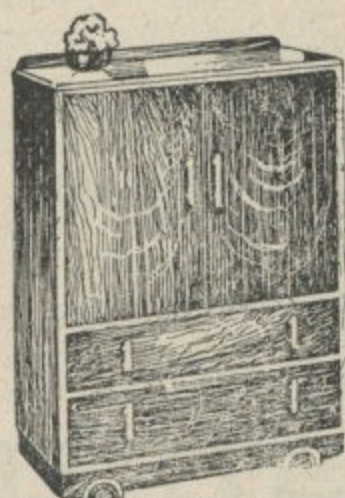
for

## SMART HOMES

As actual makers of good furniture for many years, we can bring to the matter of your home furnishing a knowledge born of experience that should be of definite use to you, and we should welcome the opportunity of assisting you.



Don't forget that our Deferred Payments Scheme suits itself to your own convenience. You can furnish out of income quite comfortably.



**SNAWDON'S Ltd.,** Complete House Furnishers,  
159, UNION STREET, PLYMOUTH.

(Two Doors from Railway Arch)

(1 Minute from Millbay Station.)

**BOX'S PILLS** *save Doctor's Bills*

**BOX'S INDIGESTION PILLS**

Sold by all Chemists

in Boxes 1/3, 3/6, 5/6, 12/6, 22/6 per box

Prepared only by

**W. H. BOX, 161 King St., Plymouth**

**TWO GOLD MEDALS AWARDED**

## THE FOOTBALL LEAGUE—Div. II.

Up to and including Wednesday, September 14th, 1938.

	P.	W.	D.	L.	Goals		Pts.
					F.	A.	
Sheffield Wednesday	5	4	1	0	13	5	9
Fulham	6	4	1	1	8	4	9
Blackburn Rovers	5	4	0	1	11	6	8
Burnley	6	3	2	1	9	6	8
Sheffield United	5	2	3	0	8	5	7
Newcastle United	6	3	1	2	13	11	7
Coventry City	5	2	2	1	6	3	6
Millwall	5	2	2	1	7	5	6
Tottenham Hotspur	5	2	2	1	11	9	6
Luton Town	5	3	0	2	6	7	6
West Bromwich Albion	6	3	0	3	16	15	6
Bradford	4	2	1	1	9	7	5
Manchester City	5	2	0	3	13	10	4
Plymouth Argyle	5	2	0	3	8	7	4
Bury	5	1	2	2	6	7	4
Nottingham Forest	5	2	0	3	4	8	4
West Ham United	5	1	1	3	10	11	3
Swansea Town	5	0	3	2	3	12	3
Tranmere Rovers	4	1	0	3	4	6	2
Norwich City	5	1	0	4	6	10	2
Southampton	5	1	0	4	6	13	2
Chesterfield	5	0	1	4	2	11	1

## POTE & SONS, LTD.

Naval & Civilian Tailors, Gentlemen's Outfitters

**44, FORE STREET, DEVONPORT**

THE NOTED HOUSE FOR  
**Royal Naval & Mercantile Marine OFFICERS' UNIFORMS**

AGENTS FOR "DEXTER" & "AQUATITE" RAINCOATS  
RELIABLE GOODS FOR MEN'S WEAR IN ALL DEPARTMENTS

Phone Devonport 24





# CARS TO SUIT ALL BUYERS

Family Saloons, Sports Cars, Town Cars, Country Cars—You'll find them all at **MUMFORDS!**

Our agencies include:—

LANCHESTER  
WOLSELEY  
DAIMLER  
HILLMAN  
MORRIS  
AUSTIN  
ALVIS  
MG



# MUMFORDS

FOR THE BIGGEST SELECTION

Old Town Street Showrooms, Plymouth.

GO

## Motor Boating



**EVINRUDE & Elto**  
OUTBOARD MOTORS

Do you know that motor boating costs very little? Almost anyone can enjoy it. Just clamp a lightweight outboard motor on the stern of a dinghy—instantly you have a motor boat. And you can buy an Evinrude or Elto outboard motor for as little as **£11**

★ Give us a call or write for our motor boating catalogues

**A. E. K. RODGMAN & SON, POMPHLETT, PLYMOUTH**

## DON'T FORGET to buy The Buckfast Abbey Honey Confectionery

WHICH CONTAIN A HIGH PERCENTAGE OF HONEY.

Your Kiddies know them.  
Guaranteed Buckfast Products.

Stocked by all Leading  
Confectioners and Stores.

Wholesale  
Distributors

**SOBEY, WILLIAMS & Co., 37 Richmond St., PLYMOUTH.**

6d. & 1/- Tins or loose 6d. per Quarter lb.

## FOOTBALL LEAGUE DIV. II. RESULTS 1938-1939

	Blackburn	Rev.	Blackburn	Bradford	Burnley	Bury	Chesterfield	Coventry City	Fulham	Luton Town	Manchester City	Millwall	Newcastle Utd.	Norwich City	Nottingham F	Plymouth Argyle	Sheffield Utd.	Sheffield Wed.	Southampton	Swansea Town	Tottenham H	Tranmere	Rev.	West Brom. A.	West Ham Utd.
Blackburn	*																		4-0			3-2			
Bradford		*								4-2										1-1					
Burnley			*					2-0							2-1				2-1						
Bury				*				0-2											5-1					1-1	
Chesterfield	0-2				*					0-3															
Coventry			1-1			*			1-0										3-0						
Fulham			0-0		2-0	*																		3-2	
Luton T'n									*				2-1	2-1											
Man. City									1-2	*										5-0				2-4	
Millwall		3-1		0-0	3-1						*														
Newcastle			3-2									*				2-1								5-1	
Norwich C.		1-3											*			2-1								2-3	
Notts F.													1-0	*		0-2				2-1					
Ply. Argyle															3-0	*								2-1	
Sheff. Utd.							0-0						0-0				*								
Sheff. Wed.	3-0			2-0														*				2-0			
S'hampton																2-1			*		1-2				
Swansea T.						1-1						1-1								*					
Tottenham							2-1										2-2	3-3			*				
Tranmere								0-1				2-0										*			
West Brom.									3-0				5-2				3-4						*		
West Ham	1-2																	2-3						*	

Read Down for Away Teams.

For Home Teams Read Across.

BY APPOINTMENT ONLY.

PHONE: PLYMOUTH 4480.

## F. L. AXWORTHY, Certified Masseur

Certified by Exam. Diploma of Honour. Higher Grade with Distinction.

Medical Electrical Treatment. Artificial Sunlight Electric Baths.

IONIZATION TREATMENT FOR RHEUMATISM, LUMBAGO, SCIATICA, NEURITIS, SPRAINS, FRACTURES, AND NERVOUS DISORDERS, DIATHERMY.

Official Masseur to PLYMOUTH ARGYLE A.F.C.

**6, WINDSOR PLACE, THE HOE, PLYMOUTH**



# REGENT CINEMA

FRANKFORT STREET  
PLYMOUTH'S FOREMOST SUPER CINEMA  
**TO-DAY**

MERLE OBERON and LAURENCE OLIVIER with Binnie Barnes  
in **"THE DIVORCE OF LADY X"**  
(IN TECHNICOLLOUR)

SCREENED DAILY AT 3-10, 6-0, 8-50. "Cert. A."

also Edith Fellows and Leo Carrillo in

**"LITTLE MISS ROUGHNECK"**

SCREENED DAILY AT 2-0, 4-50, 7-40. "Cert. U."

## NEXT HOME MATCHES

SATURDAY NEXT, SEPT. 24th (MATCH No. 6)  
(SOUTHERN LEAGUE)

Plymouth Argyle Reserves

versus

Swindon Town Reserves

Kick-off 3-15 p.m.

SATURDAY, OCT. 1st (MATCH No. 7)  
(SOUTHERN LEAGUE)

Plymouth Argyle Reserves

versus

Folkestone

Kick-off 3-15 p.m.

### PROGRAMME PRIZE-WINNERS AT WEST BROM. ALBION MATCH

No. 3.	Mrs. Davis, Plymouth	.....	.....	.....	.....	1335
No. 4.	M. A. Williams, St. Budeaux	.....	.....	.....	.....	1762
No. 5.	Mr. Denyer, Devonport	.....	.....	.....	.....	2408

Phone 2023 Plymouth

## CHARLES SOPER

WHOLESALE AND RETAIL  
MEAT PURVEYOR

8, 9 & 10, The Market, Plymouth

## SERVICE & Co. Ltd.

Ironmongers', Builders' & Plumbers' Merchants  
for

"ESSE" and "AGA"  
Anthracite Cookers

"DEVON" FIRES,  
GRATES & RANGES,  
BATHS,  
BASINS,  
Etc.

CEMENT, SAND,  
SLATES, LATHS,  
ASBESTOS, NAILS,  
ELECTRIC  
CABLES,  
BOWLS,  
GLOBES

ALF. YEO  
Managing Director  
and Secretary.



Phone  
60032

## The Octagon, PLYMOUTH

# FORD'S 'TIVVY' BEERS

Starkey, Knight & Ford, Ltd.  
81-85, UNION STREET, PLYMOUTH



To dine in comfort, off the best,  
Thus runs my little song.  
All those who do are surely right,  
And all the rest are wrong.

Clawed the Chef.



Orchestra

Grant Arnold  
L.R.A.M.

Musical Director

The Restaurant is 'Open on  
Saturdays until 8 p.m., and  
on other days as follows :

Monday, Tuesday, Thursday,  
Friday 6 p.m.

Wednesday 2 p.m.

*J. Dingle & Co.* Ltd.  
Bedford St.  
Plymouth

RESTAURANT

(Fully Licensed)