



LUTON TOWN FOOTBALL AND ATHLETIC CO. LTD.

OFFICIAL
JOURNAL

PRICE 2d



League—Division II

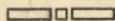
September 3rd, 1938.

LUTON TOWN v. NORWICH CITY

“TRUE-FORM”
THE FINEST FOOTWEAR
IN THE TOWN



BUY DIRECT FROM THE MAKERS



LOCAL BRANCH:

32, GEORGE STREET

Head Office and Factories: NORTHAMPTON

**Insist upon the
Building Materials for
your new house coming from**

POWDRILL'S

**BUILDERS' MERCHANTS
COAL and COKE MERCHANTS
BRICK MANUFACTURERS
SAND & GRAVEL QUARRY OWNERS**

GEORGE POWDRILL & SON LTD., 1, 3 & 5, HITCHIN ROAD, LUTON
TELEPHONE 2073 (2 Lines)

PALACE SUPPER BAR

MILL STREET
NEXT TO PALACE THEATRE, LUTON

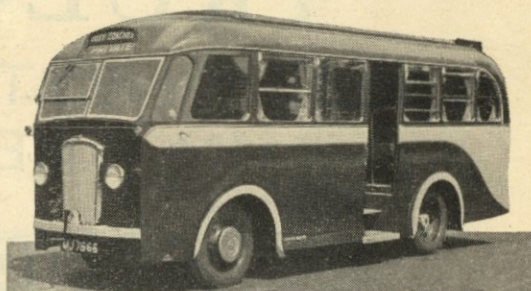
DINNERS
12 — 2.30

SUPPERS
6 — 11.30

**SPECIAL
FOOTBALL TEAS**

**FISH AND CHIPS
SAUSAGE AND MASH
— ETC. —**

PROPRIETOR: A. S. HELEY



COOPERS COSY COACHES

F. J. COOPER LTD.

20, 26 and 30 Seater
Coaches for private hire,
also stream lined 7 Seater
Car for weddings and
long distances

OXEN ROAD GARAGE

'Phone LUTON 731

**LUTON
FOOTBALL AND**



**TOWN
ATHLETIC CO.**

Telephone No. 3151-2.

LIMITED.

President: Alderman Harry Arnold, C.A., J.P.

*Vice-President: The Right Honourable E. Leslie Burgin, M.P., P.C., D.L.I.,
(His Majesty's Minister of Transport).*

Directors:

Chairman: Alderman Chas. Jeyes, C.C.

*E. Hugh Woods, Esq., (Vice-Chairman) Frank J. Andrews, Esq.,
Alderman Stanley H. Godfrey, C.A., Councillor Horace S. Hewson,
Percival G. Mitchell, Esq., Henry Richardson, Esq., C.C., Philip W. Wright, Esq.*

Team Manager: Mr. Neil McBain.

Secretary: Mr. A. E. Wickson.

Honorary Medical Officer: E. J. Crarer, Esq., M.B., Ch.B.

Honorary Solicitors: Messrs Machin & Co., 17-19, George Street West, Luton.

CLUB NOTES by "Hatter"

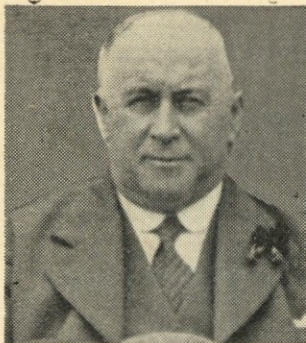
The meeting of Newcastle United and ourselves last Wednesday evening was a real thriller, everyone being kept on tenterhooks for the whole of the 90 minutes; it was only when the final whistle blew that we could be sure of the result. The first half was a ding dong struggle, with the balance of play rather in favour of the "Geordies." It was fought at a terrific pace, and for the first twenty minutes or so Bill Dolman was frequently in action. During this period the defence did sterling work, but unfortunately Jock Finlayson received a leg injury which makes him a doubtful starter on Saturday. Then towards the interval the vanguard was able to command more of the game with the result that the defence was able to take short breathers. Newcastle however, were always dangerous and missed several chances, whilst at the other end Eddie Connelly hit the underside of the crossbar only to see the ball rebound into play. So ended a great first half. The second period was a replica of the opening half with the exception that our boys gradually assumed the ascendancy, this in spite of the fact that Jock Finlayson was more or less a passenger on the right wing. This necessitated Fred Roberts taking over the right half position. Eddie Connelly coming to inside left and Charlie Ferguson inside right. After twenty-six minutes play a corner was forced on the left. This was well placed by George Stephenson, and Jack Nelson, who had come up, headed the ball goalwards. In the struggle that ensued in the goalmouth, the ball was kicked in and cleared two or three times until it did eventually rest in the back of the net. It was impossible to say who was responsible for the final touch but, after the game, enquiry of the referee, gave the decision that the ball was helped there by Gordon, the Newcastle half back. Almost immediately the ball had been centred a fine through pass by Jack Nelson found Jack Vinall, who flicked the ball to Eddie Connelly who, in turn, put a perfect pass to Charlie Ferguson. The winger took the ball to the goal line and with the Newcastle defence absolutely spreadeagled, crossed a perfect ball and George Stephenson had

merely to nod the ball into the net. The United protested against this point on the grounds of offside, but this was simply ridiculous as Ferguson was right on the goal line when he squared the ball, so it was impossible for Stephenson to be anything but onside. Directly from the restart another thrill, but an adverse one, came along. Clifton gained possession of the ball and our defenders erred in falling back instead of challenging, with the result that the inside forward fired in a great shot from quite thirty yards distance and Bill Dolman was beaten all the way. After this the "Geordies" went out for an equaliser, but this was nearly their undoing for one or two chances to increase our score went a-begging and eventually, but not too soon, the final whistle sounded with the score 2-1 in our favour. It was a thrilling match and if we are to see the like during the season, the ground must be packed on every occasion.

Today we entertain our friends and rivals Norwich City. We managed to beat them at bowls, can we beat them at football? Last season the "Canaries" divided the spoils here, although we inflicted a heavy defeat at Carrow Road. Our visitors did not commence the season any too well for they suffered defeat at home last Saturday at the hands of Bradford, losing by three goals to one. They were indeed unfortunate as they suffered the loss of Coleman and were playing only ten men for most of the game.

The "Stiffs" are due at Bournemouth this afternoon and will be all out to retain their unbeaten record. The team will be the same as played at Millwall unless Jock Finlayson's injury has not yielded to treatment and a shuffle has to be made.

The "A" team open their home programme at Bedford with a visit from Stewart and Lloyds, a strong combination and an excellent game should result. The team selected for duty is Mayberry, King, R. Samuels, Campbell, Strathie, Gardiner, Clark, Laing, S. Praeter, K. Melton, E. J. Duggan. Praeter is a young London amateur who put up quite a useful game in the trial last Wednesday week.



CHAIRMAN'S MESSAGE

It is my duty on behalf of the Board of Directors to give a word of explanation and encouragement to supporters at the opening of another season, and I would preface my remarks with our sincere thanks for the loyal support received last season.

The measure of success of a Club depends as much on the goodwill existing between Directors and supporters as in the dressing-rooms, and you may be assured that we do appreciate to the full the steady and unwavering enthusiasm which is shown by the main body of supporters.

We shall do our utmost to deserve it in the future, and if our plans mature reasonably the success of the Club is assured.

Experience has shown us very clearly that Second Division football is a grade higher than Third Division, however we appraise the latter, and if we are to maintain this standard of football, plans must envisage a good deal more than immediate essentials.

My colleagues would not wish me to make any prediction or boast of what is to be, but our aims are the same as your ambitions, and such resources as we can command will be utilised for the advancement of the Club.

Supporters are beginning to understand what we have known for some time—that the prestige of the Club is higher than ever before. We can go higher still, of course, but it means hard work, constant application to the needs of the Club in every shape and form, and, above all, good sportsmanship on the field and on the terraces.

With the assistance of the Bobbers Stand Club we are trying to bring our ground right up to the standard of other clubs in the same sphere. It cannot be done at a stroke of the pen, but by consistent effort and support we shall see it accomplished. Some hundreds of supporters will find much more comfortable accommodation through the changes that have taken place at the Oak Road end of the ground.

Within a few years we hope to have as cosy and inviting a ground as any in the country.

As far as playing strength is concerned we may not have a team of stars, but we have a band of players who will provide fine football, and with your loyal support and encouragement a high place in the League Table should be assured.

In addition to those who are already proved worthy of the Second Division class we have a complement of young players from which we hope to draw many recruits in the near future, and this policy will save the Club from that feature of the game which is at once ugly and necessary—payment of transfer fees.

Our hopes are high as ever, and with your continued goodwill the Club can prosper exceedingly.

On behalf of the Board of Directors,

CHARLES JEYES,

Chairman.

PLAYER'S APPEARANCES

	League II		London Comb. Utd.		Counties League		F.A. Cup		Other Matches		Total	
	App.	Goals	App.	Goals	App.	Goals	App.	Goals	App.	Goals	App.	Goals
Billington, H. J. R. ...			2	1					1		3	2
Campbell, R. ...					1				1		1	
Carroll, J. ...	1								1		2	
Carte, R. ...			2						1		3	
Clark, C. ...					1	1			1		1	1
Coen J. L. ...			2						1		3	
Connelly, E. ...	2								1		3	
Dolman, H. W. ...	2								1		3	
Dreyer, G. ...			2	1					1		3	1
Dunsmore, T. H. ...	2								1		3	
Ferguson, C. ...	1		1						1		3	
Finlayson, J. ...	2								1		3	
Gager, H. E. ...			2						1		3	
Gardiner, D. ...					1				1		1	
Hogg, F. ...			2						1		3	
Kidd, G. I. ...			1						1		2	
King, T. P. ...											1	1
Laing, J. F. ...					1	1					3	
Lewis, J. ...			2						1		3	
Loughran, J. ...	2								1		3	
Lutterloch, B. R. ...			2						1		3	
Mayberry, S. ...					1						1	
Nelson, J. H. ...	2								1		3	
Redfern, W. J. ...			2	3					1	2	3	5
Roberts, F. ...	2								1	1	3	1
Smith, T. S. ...	2								1		3	
Stephenson, G. H. ...	2	1							1		3	1
Stevens, R. F. ...			1	2	1						2	2
Strathie J. ...					1						1	
Vinall, E. J. ...	2								1	1	3	1
Wale, J. ...			1		1	1					2	
Amateurs and Others	1				3						3	1

ATTENDANCE BAROMETER

			1937			1938		
			£	s.	d.	£	s.	d.
Aug. 28	Aug. 27	Brighton & Hove Reserves ...	7346	167	0	6356	144	15
		Southend United Reserves ...						
	Aug. 31	Newcastle United ...				17689	811	11
Sept. 1		Aston Villa ...	25349	1299	14			
			32695	1466	14	24045	956	6

DO NOT MISS OBTAINING A COPY OF THE PROGRAMME ON SATURDAY, SEPTEMBER 24th. It will contain a full sized autographed Art Plate of George Stephenson.

To all purchasers of a programme at League II matches during this season we are presenting a full sized autographed art plate of one of our players. This is being done at the request of numerous supporters of the Club who are desirous of obtaining real photographs of their favourites. Included in the programme for the League match against Sheffield United will be that of George Stephenson.

There are still a few copies of the programme for last Wednesday's match left. These include a portrait of Jack Nelson. Any supporter desirous of purchasing a copy should make application at the office, 70-72, Kenilworth Road, Luton. Price 2d.

Supporters are asked to note that by purchasing a programme they are assisting the Club, for all profits made go to the funds.

PURCHASE A PROGRAMME AND HELP THE FOOTBALL CLUB.

BILL DOLMAN

May his arm grow ever longer,
May his eye get keener still,
May he do his stuff years longer,
That's the luck we wish our Bill.
And when at last he finds age creeping
And he has to take his pass,
Perhaps the club will do some "KEEPING"
By placing Billy on the staff.

H.B.

We welcome again Norwich City
With football colours so pretty.
May we say the same,
Today, of the game
With us, of course, taking the 'kitty.'

Humphrey Dolman, otherwise Bill,
Has a difficult role to fill.
But one must say
At the end of the play,
He does it with the utmost skill.

BILL DOLMAN

Humphrey William Dolman, to give him his correct name, was born at Bloxwich, Staffordshire, on 30th August. His schooldays were spent mostly at St. Peter's R.C. School and it is curious to note that he never tried the soccer code during this period. His first employment was in the Nut and Bolt trade with Messrs Wilkes, at their Grand Junction Works at Darlaston. Bill began his football career with Coalpost St. Mary's in which club he was the junior member by at least seven years, and it was whilst with them that he gained his first medal. He then joined Blakenall, being transferred to Willenhall (his first professional club) for the sum of £10. After two seasons with them he was again transferred to Chesterfield with whom he won a Northern Section Championship medal. From Chesterfield he joined Bristol City, coming to Luton in March two years ago. A born comedian and a great pigeon fancier. Height 5ft. 11½ in. Weight 13 stone 10lb.

Next Match, Wednesday, September 7th, 1938.

LONDON COMBINATION

LUTON TOWN RES. v. TOTTENHAM HOTSPUR RES.

Kick - Off 6.15 p.m.

Saturday, September 10th, 1938.

LONDON COMBINATION

LUTON TOWN RESERVES v. WATFORD RESERVES

Kick - Off 3.15 p.m.

ADMISSION—Centre Stand 1/6

Stand and Enclosure 1/- Ladies and Boys 6d. : Ground 6d. Boys 3d.

(ALL PRICES INCLUDE ENTERTAINMENT TAX)


SELL & MITCHELLTELEPHONES
2003 - 4Auctioneers, Land and Estate Agents
Surveyors and ValuersESTABLISHED
1879

7-9, PRINCESS STREET, LUTON

— Also —

95, HIGH STREET NORTH, DUNSTABLE. TELEPHONE 354

District Agents for Woolwich Equitable Building Society



A
Point
to remember!
E. A. ALLEN
the Printer of this
Programme
WILL GIVE SERVICE
AND SATISFACTION
424, DUNSTABLE ROAD
LUTON
Telephone 1626

**To-Day's Half-Time Scores
FIRST LIST**

A	ASTON VILLA	v. DERBY CO'NTY
B	EVERTON	v. BRENTFORD
C	HUDDERSFIELD	v. ARSENAL
D	MANCH. UN.	v. BIRMINGHAM
E	PORTSMOUTH	v. BOLTON WAN.
F	PRESTON N.E.	v. LIVERPOOL
G	STOKE CITY	v. MIDDLESBRO'
H	SUNDERLAND	v. GRIMSBY T.
K	WOLVES	v. BLACKPOOL
L	BRADFORD	v. MANCH. CITY
M	BURNLEY	v. NOTTS. FOR.
N	BURY	v. SOUTHAMPTON

NOTE—The Letter in the Programme corresponds with the letter on the Board—thus A 0—1 means that the first-named Club has scored 0 and their opponents 1.

MONO  BRAND
REGD.**Specialities**Paint and Enamel
Manufacturers"Stuart" Series
Wallpapers**OGDEN &
CLEAVER**

Stuart Street, LUTON

TELEPHONE 580

**LUTON
GAS COMPANY**JUST A TURN OF THE TAP
AND GAS GIVES INSTANT
HOT WATER, REAL FIRE-
SIDE COMFORT, CAREFREE
COOKING*Be up-to-date with Gas*Showrooms—GEORGE STREET
and DUNSTABLE ROAD**Wines & Spirits****L. GREENER**

Wine Merchant

60, WELLINGTON STREET
LUTONDELIVERIES DAILY
LUTON & DISTRICTTELEPHONE:
LUTON 2926**H. R.
WILLIAMS**REGISTERED
ELECTRICAL CONTRACTOR
and Member of the
Electrical Contractors' Association17, DURHAM ROAD
LUTON

'PHONE: LUTON 2012

NEWBERY

& CO. (LUTON) LIMITED

32/36, CROMWELL ROAD
LUTONBuilders' Merchants
Ironmongers

Door and Gate Importers

PHONE 294
PRIVATE 511

PHONE 223

EST. 1860

WHITE'S

again supply

LUTON TOWN
FOOTBALL CLUB
WITH THEIR
FOOTBALL
BOOTS

THEY know the Best

H. WHITE (LUTON)
FOOTWEAR
of every description
MANCHESTER STREET
LUTON**To-Day's Half-Time Scores
SECOND LIST**

A	CHESTERFIELD	v. BLACKBURN
B	PLYMOUTH	v. WEST BROM.
C	SHEFFIELD UN.	v. NEWCASTLE
D	SWANSEA T.	v. MILLWALL A.
E	TOTTENHAM	v. COVENTRY C.
F	TRANMERE R.	v. FULHAM
G	ALDERSHOT T.	v. SWINDON T.
H	BRISTOL CITY	v. PORT VALE
K	EXETER CITY	v. IPSWICH T.
L	NOTTS. CO'TY	v. TORQUAY U.
M	WALSALL	v. BOURNEM'UTH
N	ACCRINGTON	v. N. BRIGHTON

S.J. HAWKINS
STATION WORKS. FLITWICK BEDS.

'PHONE: FLITWICK 253

PNEUMATIC TYRED
TRUCKS, TROLLEYS AND
BARROWS
for all trades

WHOLESALE AND RETAIL

Send for List L101 Post Free

**CYCLES &
REPAIRS**

Get your new machine from

S. A. LEWIS
138, DUNSTABLE ROAD
LUTON

PHONE 807

Terms from
2/-
WeeklyAll kinds of
repairs executed
by experienced
workmen

don't get wet!
GET A MAC

(OR A RAINCOAT)

from

MARES!

Many famous makes in stock

Charles



MARES Limited

GEORGE STREET, LUTON
And at St. Albans

TODAY

**PALACE
THEATRE**
LUTON

TODAY

WILL
FYFFE

GRAHAM
MOFFATT

— IN —

"OWD BOB"

(U)

NEXT WEEK

CLAUDETTE COLBERT
and CHARLES BOYER in

"TOVARICH"

(U)

NEXT WEEK

stick to beer

BY **ALL MEANS**

J.W. GREEN'S

J. W. GREEN LIMITED, The Brewery, LUTON

Telephone - Luton 3131

**L-M-S
RAILWAY**

CHEAP TRIPS from LUTON

Depart **Sunday, 4th September** Return Fares

12 noon WINDSOR and ETON
(including river trip and tea) 7/9

5.15 Evening Excursion—
SOUTHEND ON SEA 2/5

Wednesday, 7th September
6.40 a.m. DONCASTER (Races) 11/-

Sunday, 11th September
11.35 a.m. PORTSMOUTH and
SOUTHSEA 6/3

Now is the time to
purchase your
FOOTBALL GEAR

JERSEYS
KNICKS
HOSE
SHIN GUARDS
BOOTS—ETC.

Agents for Manfield Hotspur
Football Boots

Dartboards and Darts
a speciality

Roller Skates in Great Variety

Price Lists free
on application

G. A. WILD
AND SONS

Sports Outfitters

14, Manchester Street, Luton
103, High Street N., Dunstable

BOOK AT
BAILEY'S
FOR

LONDON COASTAL COACHES
ALL INDEPENDENT SERVICES

JERSEY AIRWAYS
LONDON THEATRES
AND
AMUSEMENTS

Daily Services to all
parts of Great Britain

TOBACCONIST
AND BOOKING AGENT

38, NEW BEDFORD ROAD

LUTON

Phone 1972

LUTON TOWN 2

Shirts White
Knickers Black
Stockings Black with White Tops

Dorman
Goal

League—Division II

2 Smith
Right Back
4 Finlayson or Dreyer
Right Half

7 Ferguson
Outside Right
8 Connelly
Inside Right

Referee—
W. E. ROSS GOWER
(Abbey Wood)

12 Church
Outside Left
13 Furness
Inside Left

17 Smalley
Left Half

20 Flacke
Left Back

NORWICH CITY 1

Shirts Yellow and Green Halves
Knickers Black
Stockings Green with Yellow Tops

O'Reilly
Centre

18 Burke D.
Centre Half

22 Duke
Goal

3 Dunsmore
Left Back

6 Loughran
Left Half

9 Vinall
Centre

10 Roberts
Inside Left

11 Stephenson
Outside Left

Linesmen—
Blue Flag: H. F. HAUXWELL (West Wickham)
Red Flag: G. L. ILIFFE (Leicester)

14 MASKELL
Centre

15 Russell
Inside Right

16 Friar
Outside Right

19 Robinson
Right Half

21 Halliday
Right Back

Kick-Off 3.15 p.m.

MODERN
FIREPLACES

HEATING
APPLIANCES

Up-to-date Sanitary Fittings
in White and Colours

For ARTISTIC WALLPAPERS

**CHARLES
BIRD & SONS
LTD.**
**COLLINGTON STREET
LUTON**

Telephone: Luton 1255/1256

For QUALITY PAINTS

"Triplex" Safety Glass
Motor Screens (Fitted)

Makers of
MIRRORS—SPLASH BACKS—GLASS
SHELVES & GLASS FIRE SCREENS

HARRY CANHAM

Cardboard Box
Packing Case, Ply Box and
Crate Manufacturer

9a, MARKET HILL, LUTON

TELEPHONE 458

WAKE UP YOUR LIVER BILE

*without Calomel—and you'll jump out of bed in
the morning full of vim and vigour*

YOUR LIVER should pour out
two pints of liquid bile into
your system daily. If this bile is
not flowing freely, your food
doesn't digest. It just decays
inside you. Gas bloats up your
stomach. You get constipated.
Your whole system is poisoned
and you feel sour, sunk, and the
world looks punk.

Laxatives help a little, but a
mere bowel movement doesn't

get at the cause. It takes those
good old Carters Brand Little
Liver Pills to get these two pints
of bile flowing freely and make
you feel "up and up." Harmless,
gentle, yet amazing in making
bile flow freely. Ask
for Carters Brand Little
Liver Pills.

Stubbornly refuse any-
thing else. 1/3 and 3/- at
all chemists.

NOW ALSO IN
PENNYWORTHS
EVERYWHERE

There is no
'TRICK PLAY'
in this Building Society.

A SAFE INVESTMENT

WHICH DOES NOT DEPRECIATE.

Full details of attractive terms to Investors from

**LUTON & MIDLANDS
BUILDING SOCIETY**

Telephone: Luton 1067

11, George St.
West
LUTON

WEBDALE'S

of WELLINGTON STREET

— FOR —

KITCHEN EQUIPMENT

AND ALL

HOUSEHOLD REQUIREMENTS

AT LOWEST PRICES

21 to 27, WELLINGTON STREET
Phone 41 LUTON

Charnley
and Sons
REGISTERED
OPTICIANS

NATIONAL HEALTH
INSURANCE

On the Official List of
H.S.A. OPTICIANS

11, Wellington Street
LUTON
Telephone 1808

Over 50 years in the
Printing Trade
in Luton
○○○○

W. F. BUNKER

WILL HELP YOU IN
THE PRODUCTION
OF YOUR PRINTING
REQUIREMENTS

26a, CHAPEL STREET
LUTON
PHONE 224

E. A. GREEN

BOOKSELLER
NEWSAGENT
STATIONER

*Luton's Most Progressive
Circulating Library*

21a, New Bedford Road
and 228, Biscot Road
LUTON
Telephone 476

F. WHITE

BUILDER
and
CONTRACTOR
141,
Stockingstone Road
LUTON

ALL CLASSES OF
REPAIRS, PAINTING
AND DECORATING
UNDERTAKEN

Estimates Free

To-Day's Half-Time Scores

THIRD LIST

A	STOCKPORT C. v. BARROW
B	WREXHAM v. DONCASTER
C	YORK CITY v. ROTHERHAM
D	CHARLTON A. v. LEEDS UNITED
E	CHELSEA v. LEICESTER C.
F	WEST HAM U. v. WEDNESDAY
G	CRYSTAL PAL. v. WATFORD
H	MANSFIELD T. v. BRIGHTON & H.
K	NEWPORT CO' v. CARDIFF C.
L	NORTHAMPT'N v. CLAPTON O'
M	QUEEN'S P. R. v. BRISTOL ROV.
N	SOUTHEND U. v. READING

W.
CHAMBERLAIN

Proprietors—
A. M. Chamberlain & Co.
R. Deadman
106, Dunstable Road
LUTON

Best British Made
Brushes and Brooms
Enamel Ware
City of London
White Lead Paint

Messrs Merrediths & Co.
Merlac Enamel Paints
Fadeless Wall Paper
Ask for Pattern Books

—□—
A TRIAL SOLICITED

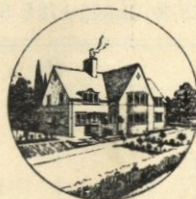
W. HOLES

3, Gordon Street, Luton
Coal and
Coke Merchant

Authorized Agent for
Luton Gas Company's
large and graded coke

Agent for
L.M.S. Passenger Dept.

Telephone 210



TELEPHONE:
LUTON 2126

P. W. SMITH

Builder — Contractor
High Class Decorator

418, DUNSTABLE ROAD
LUTON



LUTON BOBBERS STAND CLUB

President: P. W. Wright, Esq.

Vice-Chairman: E. G. Gibbs, Esq.

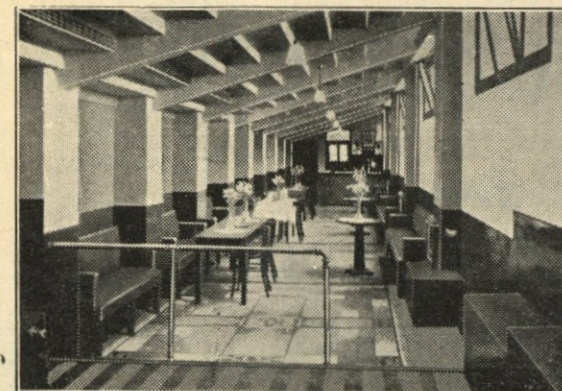
Hon. Secretary: Mr. A. C. Wright

Hon. Treasurer: Mr. J. Collier

Committee:

Messrs W. Banks, F. Cooper, A. Flitton,
N. Lines, S. Setchell, R. G. Smith

TELEPHONE 2566



A FEW NOTES OF INTEREST

For the interest of the Members for the autumn and winter evenings, various sports activities have been arranged for their welfare. The Committee have decided to enter The Luton and District Skittles League, and also have entered 3 teams in the 'Peoples' National Darts Tournament Championship. We shall await with interest the progress made in these events.

A Thrift Club has been formed for the Members, which is already showing lively activity, as the benefits of this Club are very entertaining to its Members. We offer a hearty invitation to any football supporter who is not a Member of the Club to pay us a visit, when we feel sure after seeing the Club for yourselves, you will become Members.

THE CENTRAL RESTAURANT

20/22/24, CHEAPSIDE
LUTON

○○○

SEATING FOR 300 ESTABLISHED 60 YEARS

Phone 172 and book a table
and have your meal in comfort

WE CAN CATER FOR YOU
ANYWHERE
ANY TIME
ANY NUMBER

A. E.
NICHOLLS

Wholesale
CONFECTIONER & TOBACCONIST

CAN SUPPLY YOU WITH
EVERYTHING YOU WANT
FOR THE TOBACCO AND
CONFECTIONERY TRADE
AT LOWEST PRICES



Prompt Delivery and Civility

16, MILL STREET, LUTON

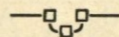
'Phone: Luton 902

CHARLES JEYES LTD.

The Reliable Firm for
ALL CLASSES OF BUILDINGS
AND DECORATIONS

BUILDING SITES IN THE BEST
PARTS OF THE TOWN

REPAIRS OF ALL KINDS A
SPECIALITY



17a, WINDSOR STREET, LUTON

TELEPHONE 594

USED CARS

Reconditioned

TO A DEFINITE SPECIFICATION!

— AT —

Luton Motor Co. LTD.

BEECH HILL, DUNSTABLE ROAD
LUTON

'Phone 15

When we sell you a Used Car, our reputation depends on seeing that you are completely satisfied. With our reconditioned used cars we give you a **2-day money-back guarantee**. Buy from us and you'll get a reliable car at a reasonable price!

EXAMPLES

can be seen
at our Showroom
or
Chaul End Depot

FORD DEALER

Football League Division II — RESULTS AT A GLANCE

[illegible]

FIXTURES, 1938 - 9

FIRST XI Division II		F. A.	
Sat., Aug. 27	West Bromwich Albion	... 1 1 H	0 3 1
Wed., .. 31	Newcastle United	... 4 1 H	2 1
Sat., Sept. 3	Norwich City	... 1 1 H	
Mon., .. 5	Coventry City	... 1 2 A	
Sat., .. 10	Manchester City	... 4 2 A	
Sat., .. 17	Plymouth Argyle	... 4 2 A	
Sat., .. 24	Sheffield United	... 2 3 H	
Sat., Oct. 1	Burnley	... 2 3 A	
Sat., .. 8	Tottenham Hotspur	... 2 4 H	
Sat., .. 15	Bradford	... 4 2 H	
Sat., .. 22	Swansea Town	... 1 1 A	
Sat., .. 29	Blackburn Rovers	... 4 1 H	
Sat., Nov. 5	Tranmere Rovers A	
Sat., .. 12	West Ham United	... 2 2 H	
Sat., .. 19	Bury	... 4 3 A	
Sat., .. 26	Sheffield Wednesday	... 2 2 H	
Sat., Dec. 3	Fulham	... 1 4 A	
Sat., .. 10	Chesterfield	... 1 1 H	
Sat., .. 17	Millwall A	
Sat., .. 24	West Bromwich Albion H	
Mon., .. 26	Nottingham Forest	... 0 1 A	
Tues., .. 27	Nottingham Forest	... 2 2 H	
Sat., .. 31	Norwich City	... 4 0 A	
Sat., Jan. 7	Manchester City H	
Sat., .. 14	Plymouth Argyle	... 1 1 H	
Sat., .. 21	Sheffield United	... 0 2 A	
Sat., Feb. 4	Burnley	... 3 1 H	
Sat., .. 11	Tottenham Hotspur	... 0 3 A	
Sat., .. 18	Bradford	... 1 1 A	
Sat., .. 25	Swansea Town	... 5 1 H	
Sat., Mar. 4	Blackburn Rovers	... 2 2 A	
Sat., .. 11	Tranmere Rovers H	
Sat., .. 18	West Ham United	... 0 0 A	
Sat., .. 25	Bury	... 0 1 H	
Sat., April 1	Sheffield Wednesday	... 0 4 A	
Fri., .. 7	Southampton	... 1 3 H	
Sat., .. 8	Fulham	... 4 0 H	
Mon., .. 10	Southampton	... 6 3 A	
Sat., .. 15	Chesterfield	... 2 5 A	
Sat., .. 22	Millwall H	
Sat., .. 29	Newcastle United	... 3 1 A	
Sat., May 6	Coventry City	... 1 4 H	

RESERVE FIXTURES		London Combination		F. A.	
Sat., Aug. 27	Brighton & Hove A.	... 6 2 H	2 1		
Mon., .. 29	Millwall	... 0 3 A	5 1		
Sat., Sept. 3	Bournemouth	... 1 1 A			
Wed., .. 7	Tottenham Hotspur	... 0 2 H			
Sat., .. 10	Watford	... 2 0 H			
Sat., .. 17	Southend United	... 3 1 H			
Mon., .. 19	Tottenham Hotspur	... 3 5 A			
Sat., .. 24	Queens Park Rangers	... 0 4 A			
Wed., .. 28	Southampton	... 2 0 A			
Sat., Oct. 1	Chelsea	... 1 1 H			
Wed., .. 5	Leicester City	... 0 4 A			
Sat., .. 8	Charlton Athletic	... 0 4 A			
Mon., .. 10	Leicester City	... 1 4 A			
Sat., .. 15	Fulham	... 1 5 A			
Sat., .. 22	Brentford	... 0 0 H			
Sat., .. 29	Arsenal	... 0 1 A			
Sat., Nov. 5	Clapton Orient	... 3 0 H			
Sat., .. 12	Portsmouth	... 0 0 A			
Sat., .. 19	West Ham	... 0 1 H			
Sat., .. 26	Northampton Town	... 1 1 A			
Sat., Dec. 3	Bristol City	... 3 1 H			
Sat., .. 10	Swansea Town	... 1 0 A			
Sat., .. 17	Crystal Palace	... 6 1 H			
Sat., .. 24	Brighton & Hove A.	... 1 1 A			
Mon., .. 26	Southampton	... 2 1 H			
Sat., .. 31	Bournemouth	... 2 1 H			
Sat., Jan. 7	Reading	... 3 1 H			
Sat., .. 14	Watford	... 2 3 A			
Sat., .. 21	Southend United	... 0 4 A			
Sat., .. 28	Queens Park Rangers	... 2 2 H			
Sat., Feb. 4	Chelsea	... 2 6 A			
Sat., .. 11	Charlton Athletic	... 2 0 H			
Sat., .. 18	Fulham	... 3 0 H			
Sat., .. 25	Brentford	... 0 3 A			
Sat., Mar. 4	Arsenal	... 1 2 H			
Sat., .. 11	Clapton Orient	... 7 0 A			
Sat., .. 18	Portsmouth	... 1 2 H			
Sat., .. 25	West Ham	... 1 1 A			
Sat., April 1	Northampton Town	... 3 3 H			
Fri., .. 7	Coventry City	... 0 1 A			
Sat., .. 8	Bristol City	... 2 3 A			
Mon., .. 10	Coventry City	... 4 0 H			
Sat., .. 15	Swansea Town	... 1 1 H			
Sat., .. 22	Crystal Palace	... 3 1 A			
Sat., .. 29	Millwall	... 5 1 H			
Sat., May 6	Reading	... 4 1 A			

LEAGUE TABLES

LEAGUE DIVISION II

	Pld.	Won	Lost	Drn.	For	Agst.	P.
Manchester City	2	2	0	0	8	0	4
West Brom. A.	2	2	0	0	6	2	4
Fulham	2	2	0	0	5	2	4
Blackburn Rovers	2	2	0	0	5	3	4
Sheffield United	2	1	0	1	2	0	3
Bradford	2	1	0	1	4	2	3
Sheffield Wednesday	2	1	0	1	5	3	3
Burnley	2	1	0	1	3	2	3
Tottenham Hotspur	2	1	0	1	5	4	3
Plymouth Argyle	2	1	1	0	4	2	2
Tranmere Rovers	2	1	1	0	4	3	2
Coventry City	2	0	0	2	1	1	2
Millwall	2	1	1	0	3	3	2
Newcastle United	2	1	1	0	3	3	2
LUTON TOWN	2	1	1	0	2	4	2
Swansea Town	2	0	1	1	1	6	1
West Ham United	2	0	2	0	3	5	0
Southampton	2	0	2	0	2	4	0
Norwich City	2	0	2	0	3	6	0
Chesterfield	2	0	2	0	1	6	0
Bury	2	0	2	0	0	4	0
Notts Forest	2	0	2	0	0	5	0

LONDON COMBINATION

	Pld.	Won	Lost	Drn.	For	Agst.	P.
Queens Park Rangers	2	2	0	0	9	1	4
Bristol City	2	2	0	0	4	1	4
LUTON TOWN	2	2	0	0	7	2	4
West Ham United	2	1	0	1	10	4	3
Crystal Palace	2	1	0	1	8	4	3
Fulham	2	1	0	1	3	2	3
Southend United	2	1	0	1	6	4	3
Arsenal	2	1	0	1	4	3	3
Watford	2	1	0	1	4	3	3
Tottenham Hotspur	1	1	0	0	6	0	2
Coventry City	1	1	0	0	2	0	2
Leicester City	2	1	1	0	8	5	2
Charlton Athletic	2	0	0	2	2	2	2
Chelsea	1	0	0	1	2	2	1
Bournemouth	2	0	1	1	4	5	1
Brentford	2	0	1	1	3	5	1
Swansea Town	2	0	1	1	3	8	1
Southampton	2	0	1	1	3	9	1
Clapton O.	2	0	1	1	1	7	1
Portsmouth	1	0	1	0	1	2	0
Brighton & Hove A.	2	0	2	0	2	7	0
Millwall	2	0	2	0	0	7	0
Northampton	2	0	2	0	0	3	0
Reading	2	0	2	0	0	8	0

Edward Martell

& Co., Ltd.

TELEPHONE

896-7

Coal and Coke Merchants

ESTABLISHED

1879

24, UPPER GEORGE STREET, LUTON

Burn "Hucknall" Ashless Coal

It Scores Every Time!!

Popular Price! Saves Labour!! Great Heat!!!

WHY NOT TRY IT?

CARRY ON

LUTON TOWN!

a packet of

SWEET

ROSEMARY

TOBACCO

is always enjoyable

W. & F. FAULKNER

LONDON

BRANCH OF THE IMPERIAL TOBACCO CO.
(OF GREAT BRITAIN AND IRELAND), LIMITED

KODAK, ENSIGN & AGFA CAMERAS & FILMS

Developing, Printing
and Enlarging by
experts, high class
work at reasonable

prices

A. G. PRATT

M.P.S., F.S.M.C.

PHOTOGRAPHIC CHEMIST
AND OPTICIAN

169, DUNSTABLE ROAD, LUTON

'PHONE 708

FOOTBALL AHEAD!



We can supply all your
football equipment

FOOTBALLS, JERSEYS,
KNICKERS, SHINGUARDS,
HOSE, BOOTS, GOAL
NETS, KIT BAGS, ETC.

Every requisite at lowest prices. Special terms to Clubs
Send for our Winter Sports List today. It is Free.

When you are buying a bicycle
ask yourself these questions —

Is it individually produced in
the world's largest and best
equipped cycle factory?
Has it an exclusive design which
ensures easiest possible running?
Is the plating and enamel extra
thick to withstand the most
inclement weather?

— the Raleigh is the answer to these
questions. It will give you the finest
possible cycle value because it is superior
even to the spokes.

From **£5/10/-** Cash
OR EASY TERMS
Write for Catalogue



RALEIGH
THE ALL-STEEL BICYCLE

FROM

A. G. Partridge & Co

PHONE 234

10-12 CHAPEL ST.
LUTON