



# LUTON TOWN FOOTBALL AND ATHLETIC CO. LTD.

OFFICIAL  
JOURNAL

PRICE 2d



League—Division II

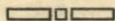
August 31st, 1938.

LUTON TOWN v. NEWCASTLE UNITED

**“TRUE-FORM”**  
THE FINEST FOOTWEAR  
IN THE TOWN



BUY DIRECT FROM THE MAKERS



LOCAL BRANCH:

**32, GEORGE STREET**

Head Office and Factories: NORTHAMPTON



Insist upon the  
Building Materials for  
your new house coming from

**POWDRILL'S**

BUILDERS' MERCHANTS  
COAL and COKE MERCHANTS  
BRICK MANUFACTURERS  
SAND & GRAVEL QUARRY OWNERS

GEORGE POWDRILL & SON LTD., 1, 3 & 5, HITCHIN ROAD, LUTON  
TELEPHONE 2073 (2 Lines)

## PALACE SUPPER BAR

MILL STREET  
NEXT TO PALACE THEATRE, LUTON

DINNERS

12 — 2.30

SUPPERS

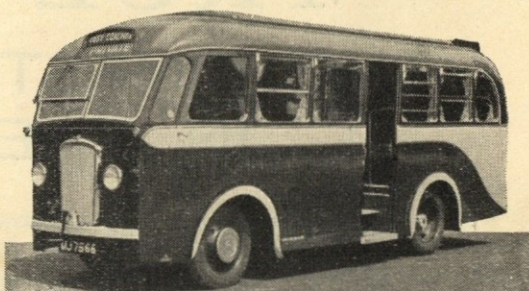
6 — 11.30

SPECIAL  
FOOTBALL TEAS

FISH AND CHIPS  
SAUSAGE AND MASH

ETC.

PROPRIETOR: A. S. HELEY



## COOPERS COSY COACHES

F. J. COOPER LTD.

20, 26 and 30 Seater  
Coaches for private hire,  
also stream lined 7 Seater  
Car for weddings and  
long distances

OXEN ROAD GARAGE

'Phone LUTON 731

LUTON  
FOOTBALL AND



TOWN  
ATHLETIC CO.

Telephone No. 3151-2.

LIMITED.

President: Alderman Harry Arnold, C.A., J.P.

Vice-President: The Right Honourable E. Leslie Burgin, M.P., P.C., D.L.I.,  
(His Majesty's Minister of Transport).

Directors:

Chairman: Alderman Chas. Jeyes, C.C.

E. Hugh Woods, Esq., (Vice-Chairman) Frank J. Andrews, Esq.,  
Alderman Stanley H. Godfrey, C.A., Councillor Horace S. Hewson,  
Percival G. Mitchell, Esq., Henry Richardson, Esq., C.C., Philip W. Wright, Esq.

Team Manager: Mr. Neil McBain.

Secretary: Mr. A. E. Wickson.

Honorary Medical Officer: E. J. Crarer, Esq., M.B., Ch.B.

Honorary Solicitors: Messrs Machin & Co., 17-19, George Street West, Luton.

SO we came away from the "Hawthorns" empty handed last Saturday, but I think all our supporters who made the journey will agree we did not deserve to be down by three clear goals. The breaks went all in favour of West Bromwich and they made full use of them. To add more misfortune to our lot we lost the services of Tony Carroll fifteen minutes from the end of the game with a damaged ankle, the extent of which injury is not definitely known at the time of writing although there are hopes that it is not so serious as was first thought. Never mind, let us hope for better things tonight although Newcastle will be all out to avenge last season's defeats. They opened with a victory over Plymouth Argyle at St. James Park, and naturally will be anxious to continue the sequence.

The Reserves were good value for their two points at the expense of Brighton Reserves and, but for an injury sustained by George Kidd early in the game, I could see a hatful of goals coming. This young forward line was playing great stuff and Bill Redfern's goal after two minutes play was a perfect gem of united craft. Immediately after this point the Brighton goal underwent a bombardment and amateur goalkeeper Packham had many opportunities of showing his capabilities. This he did heroically and our visitors owe him a debt of gratitude. Then came George Kidd's injury and the combination had to be altered, Horace Gager falling back, Fred Hogg taking the inside berth with George on the left wing. Even then danger always threatened the Brighton goal, but the only further points notched were by penalties awarded one to each team.

On Monday evening the "Stiffs" with two changes from Saturday's team, Jim Wale for George Kidd at left half and Ron Stevens for Charlie

Ferguson at outside right, imposed a severe licking on the "Lions" at the Den, winning by five goals to one. I am not exaggerating when I say the score could easily have been double figures, several easy chances being missed, but I am not criticising these youngsters, for I am sure that with the gaining of experience these lapses will quickly be eliminated. The first goal by Ron Stevens was a perfect gem of clever combination in which all the forwards took part, the final pass finding Ron all on his own and his shot rocketing in the back of the net. It was Ron too who notched the second goal, nipping in and steering the ball past the custodian. Then we had two great goals from Bill Redfern, the first very similar to Saturday's goal and the second a great shot which the goalkeeper could only help steer into the net. And then Hugh Billington scored his first goal as a "pro" and so completed a nap hand.

The "A" team also opened with a victory at Wellingborough, winning by three goals to one. The League Secretary was present at this game and commented highly on the exhibition of these lads. They will be up against sterner opposition on Saturday, when opposing Stewart & Lloyds at Bedford.

The visit of Newcastle United  
Should make us all feel excited,  
They've come to this "joint"  
For, at least, a point  
We trust their hopes will be blighted.

Mr. Nelson, better known as Jack,  
Is captain and centre half back.  
It is often a treat  
To see him use his feet,  
While his head often stops an attack.





## BILLY EDWARDS

Mr. W. J. Edwards, or as he is more popularly known, Billy Edwards has relinquished the post of Programme Sales Manager and this incomplete statement is to acknowledge in a small way, the appreciation of the Club for the services he has rendered.

Bill has managed the programme sales for thirty years, but his association with them goes back a long time further for he was only nine years old when he first began calling, "Match Card, gents." What a change he has seen since those far off days. His first experience was on the ground then known as Brown's Timber Yard, and when the Club transferred their activities to the Gas Works Ground he came along as well, as he did also when a further trek was made to our present domicile. The first printer of the programme was a Mr. S. Pride of Wellington Street, who had a business where the present Co-operative Stores now stand, but it was not long before Bill had to fetch the programmes from Mr. Moore of High Town Road and when the latter relinquished his business activities, then from his successor, Mr. Armstrong. Subsequently the "Luton News" undertook the issue of the programme and with this innovation the proprietors appointed Bill as their sales manager, a position he occupied even when the club undertook the management of the journal four years ago.

I have no doubt that Bill could give us many amusing anecdotes of some of his experiences during

his long association with the programmes, but space is rather limited here. However it was no uncommon experience in the early days when the spectators were not so orderly as they are now, for him to rush the referee, in his pony and cart, out of the back entrance, to the station.

For fourteen years Bill has witnessed every Cup Tie, both home and away, in which Luton Town has been engaged, so therefore he has seen them "go out" on every occasion. This he would not have been able to do but for the very able assistance he received from his brother Bert, who on these occasions assumed control of the programme sales.

Although Bill has relinquished the position of Programme Sales Manager it must not under any circumstances be assumed that there is any feeling between the club and himself in the matter, nor is it due to the increased public and social work in which the burgesses of Luton have honoured him these last few years, for like everyone of us he still has to work for his living, and he has not built up his successful haulage contractor's business by refusing to do small jobs. The Directors were unanimous in their desire that he should retain control as previously, but business arrangements could not be made amicably. They feel sure however, and to this Bill has also readily assented, that should at any time in the future his services or advice are needed, they will be immediately forthcoming.

Well done Bill, I am sure that during your association with the programmes your geniality has made you a host of friends and I should be surprised if nary one enemy.

## PLAYER'S APPEARANCES

	League II		London Comb. Utd.		League F.A. Cup		Other Matches		Total	
	App.	Goals	App.	Goals	App.	Goals	App.	Goals	App.	Goals
Billington, H. J. R. ...							1	1	3	2
Campbell, R. ...							1		1	
Carroll, J. ...	1						1		3	
Carte, R. ...		2					1		3	
Clark, C. ...				1	1				1	1
Coen J. L. ...		2					1		3	
Connelly, E. ...	1						1		2	
Dolman, H. W. ...	1						1		2	
Dreyer, G. ...		2	1				1		3	1
Dunsmore, T. H. ...	1						1		2	
Ferguson, C. ...		1					1		2	
Finlayson, J. ...	1						1		2	
Gager, H. E. ...		2					1		3	
Gardiner, D. ...				1			1		1	
Hogg, F. ...		2					1		3	
Kidd, G. I. ...		1					1		2	
King, T. P. ...										
Laing, J. F. ...				1	1				1	1
Lewis, J. ...		2					1		3	
Loughran, J. ...	1						1		2	
Lutterloch, B. R. ...		2					1		3	
Mayberry, S. ...				1					1	
Nelson, J. H. ...	1						1	2	3	5
Redfern, W. J. ...		2	3				1	1	2	1
Roberts, F. ...	1						1		2	
Smith, T. S. ...	1						1		2	
Stephenson, G. H. ...	1						1		2	
Stevens, R. F. ...		1	2						2	2
Strathie J. ...				1					1	
Vinall, E. J. ...							1	1	2	1
Wale, J. ...	1		1						2	
Amateurs and Others									3	

## THE FOOTBALL LEAGUE JUBILEE TRUST FUND

The Directors desire to thank all supporters who attended, and paid for admission, at the match with Watford on August 20th. The attendance was 9097 and the receipts £507/14/0. During this week we have received a Postal Order for 2/6 from a member of the staff of the "Luton News," who was unable to be present at this match, towards this Fund, and to him we extend our most sincere thanks for his contribution. Should there be any other supporter who would like to make a contribution likewise please forward to the Secretary, Luton Town Football Club, 70-72, Kenilworth Road, Luton, or hand it to any Director or Official of the Club. All contributions will be gratefully acknowledged.

## JACK NELSON

Today's portraiture, John Henry Nelson, is a native of the County Palatine, being born at Chorley, one 15th day of March. His schooldays were spent at the local St. Mary's School and at the age of 14 he commenced a career as a bleacher in the cotton trade. His love of soccer, which had been prevalent during his schooldays, found an outlet with Chorley All Saints' Juniors, but it was not long before he was wearing the Chorley Club's colours itself. His display attracted the attention of Preston North End and he was eventually persuaded to sign "pro" forms for them. After five years at Preston he was transferred to Wolverhampton Wanderers where he stayed 2½ seasons before coming to Luton some 3 terms ago. Hobbies—Tennis and Motoring. Height 6ft. 1½ in. Weight 12½ stone.

**DO NOT MISS OBTAINING A COPY OF THE PROGRAMME ON SATURDAY NEXT. It will contain a full sized autographed Art Plate of Bill Dolman.**

To all purchasers of a programme at League II matches during this season we are presenting a full sized autographed art plate of one of our players. This is being done at the request of numerous supporters of the Club who are desirous of obtaining real photographs of their favourites. Included in the programme for next Saturday's League match against Norwich City will be that of Bill Dolman.

Supporters are asked to note that by purchasing a programme they are assisting the Club, for all profits made go to the funds.

**PURCHASE A PROGRAMME AND HELP THE FOOTBALL CLUB.**

No 5623

**Next Match, Saturday, September 3rd, 1938.**

FOOTBALL LEAGUE—DIVISION II

**LUTON TOWN v. NORWICH CITY**

Kick - Off 3.15 p.m.

**ADMISSION—Centre Stand 5/- (Reserved Seats)**

**Stand and Enclosure 2/- Boys 1/- : Ground 1/- Boys 6d.**

**Wednesday, September 7th, 1938.**

LONDON COMBINATION

**LUTON TOWN RES. v. TOTTENHAM HOTSPUR RES.**

Kick - Off 6.15 p.m.

**ADMISSION—Centre Stand 1/6**

**Stand and Enclosure 1/- Ladies and Boys 6d. : Ground 6d. Boys 3d.**

(ALL PRICES INCLUDE ENTERTAINMENT TAX)




**SELL & MITCHELL**TELEPHONES  
2003 - 4Auctioneers, Land and Estate Agents  
Surveyors and ValuersESTABLISHED  
1879

7-9, PRINCESS STREET, LUTON

— Also —

95, HIGH STREET NORTH, DUNSTABLE. TELEPHONE 354

District Agents for Woolwich Equitable Building Society



**A Point to remember!**  
**E. A. ALLEN**  
the Printer of this Programme  
WILL GIVE SERVICE AND SATISFACTION  
424, DUNSTABLE ROAD  
LUTON  
Telephone 1626

**To-Day's Half-Time Scores**  
**FIRST LIST**

A	CHELSEA	v. PRESTON N. E.	.....
B	DERBY CO'NTY	v. HUDDERSFIELD	.....
C	EVERTON	v. GRIMSBY T.	.....
D	LEEDS UNITED	v. BIRMINGHAM	.....
E	MANCH. UN.	v. BOLTON WAN.	.....
F	MIDDLESBRO'	v. ASTON VILLA	.....
G	PORTSMOUTH	v. BLACKPOOL	.....
H	PLYMOUTH	v. NOTTS. FOR.	.....
K	ALDERSHOT T.	v. BRISTOL CITY	.....
L	BOURNEM'UTH	v. READING	.....
M	MANSFIELD T.	v. CARDIFF C.	.....
N	NOTTS. CO'TY	v. CRYSTAL PAL.	.....

NOTE—The Letter in the Programme corresponds with the letter on the Board—thus A 0-1 means that the first-named Club has scored 0 and their opponents 1.

MONO  BRAND  
REGD.**Specialities**Paint and Enamel  
Manufacturers"Stuart" Series  
Wallpapers**OGDEN &  
CLEAVER**

Stuart Street, LUTON

TELEPHONE 580

**LUTON  
GAS COMPANY**JUST A TURN OF THE TAP  
AND GAS GIVES INSTANT  
HOT WATER, REAL FIRE-  
SIDE COMFORT, CAREFREE  
COOKING*Be up-to-date with Gas*Showrooms—GEORGE STREET  
and DUNSTABLE ROAD**Wines & Spirits****L. GREENER**

Wine Merchant

60, WELLINGTON STREET  
LUTONDELIVERIES DAILY  
LUTON & DISTRICTTELEPHONE:  
LUTON 2926**H. R.  
WILLIAMS**REGISTERED  
ELECTRICAL CONTRACTOR

and Member of the

Electrical Contractors' Association

17, DURHAM ROAD  
LUTON

'PHONE: LUTON 2012

**NEWBERY**

&amp; CO. (LUTON) LIMITED

32/36, CROMWELL ROAD  
LUTONBuilders' Merchants  
Ironmongers  
Door and Gate ImportersPHONE 294  
PRIVATE 511

PHONE 223

EST. 1860

**WHITE'S**

again supply

LUTON TOWN  
FOOTBALL CLUB

WITH THEIR

FOOTBALL  
BOOTS

THEY know the Best

**H. WHITE** (LUTON)  
LTD.

FOOTWEAR

of every description

MANCHESTER STREET  
LUTON**To-Day's Half-Time Scores**  
**SECOND LIST**

A	SOUTHEND U.	v. TORQUAY U.	.....
B	SWINDON T.	v. CLAPTON O'	.....
C	CHESTER	v. N. BRIGHTON	.....
D	GATESHEAD	v. BARROW	.....
E	YORK CITY	v. DARLINGTON	.....
F			.....
G			.....
H			.....
K			.....
L			.....
M			.....
N			.....

TELEPHONE: FLITWICK 253

Reserved for

**S. J. HAWKINS**

Station Works

FLITWICK

— BEDS. —

**CYCLES &  
REPAIRS**

Get your new machine from

**S. A. LEWIS**138, DUNSTABLE ROAD  
LUTON

PHONE 807

Terms from

**2/-**  
WeeklyAll kinds of  
repairs executed  
by experienced  
workmen



# MARES for Caps

Charles  
**MARES** Limited  
George Street & Dunstable Road  
LUTON And at St. Albans

TODAY

## PALACE THEATRE LUTON

TODAY

WILL FYFFE  
and GRAHAM MOFFATT in  
"OWD BOB"

### stick to beer

BY ALL MEANS

## J.W. GREEN'S

J. W. GREEN LIMITED, The Brewery, LUTON

Telephone - Luton 3131

## L-M-S RAILWAY

Depart

Saturday, 3rd September

Return  
Fares

6.15 Evening Excursion—  
NORTHAMPTON . . 1/7

Sunday, 4th September

12 noon WINDSOR and ETON  
(including river trip and  
tea) . . . . . 7/9

5.15 Evening Excursion—  
SOUTHEND ON SEA 2/5

Now is the time to  
purchase your  
FOOTBALL GEAR

JERSEYS  
KNICKS  
HOSE  
SHIN GUARDS  
BOOTS — ETC.

Agents for Manfield Hotspur  
Football Boots

Dartboards and Darts  
a speciality

Roller Skates in Great Variety

Price Lists free  
on application

**G. A. WILD**  
AND SONS

Sports Outfitters

14, Manchester Street, Luton  
103, High Street N., Dunstable

BOOK AT  
**BAILEY'S**  
FOR  
LONDON COASTAL COACHES  
ALL INDEPENDENT SERVICES

JERSEY AIRWAYS  
LONDON THEATRES  
AND  
AMUSEMENTS

Daily Services to all  
parts of Great Britain

TOBACCONIST  
AND BOOKING AGENT

38, NEW BEDFORD ROAD  
LUTON  
Phone 1972

### LUTON TOWN

White Shirts with Black Collars  
and Cuffs, Black Knickers  
Black Stockings with White Tops

1 Dolman Goal  
2 Smith Right Back  
3 Dunsmore Left Back  
4 Finlayson Right Half  
5 Nelson Centre Half  
6 Loughran Left Half  
7 Ferguson Outside Right  
8 Connelly Inside Right  
9 Vinall Centre  
10 Roberts Inside Left  
11 Stephenson Outside Left  
12 Moody Outside Left  
13 Clifton Inside Left  
14 Cairns Centre  
15 Bowden Inside Right  
16 Birkett Outside Right  
17 Wright Left Half  
18 Denmark Centre Half  
19 Gordon Right Half  
20 Ansell Left Back  
21 Richardson Right Back  
22 Swinburne Goal

### NEWCASTLE UNITED

Black and White Vertical  
Striped Shirts, Black Knickers  
Black Stockings with White Tops

League—Division II

MODERN FIREPLACES HEATING APPLIANCES

Up-to-date Sanitary Fittings  
in White and Colours

For ARTISTIC WALLPAPERS

**CHARLES  
BIRD & SONS  
LTD.**  
COLLINGTON STREET  
LUTON

Telephone: Luton 1255/1256

For QUALITY PAINTS

"Triplex" Safety Glass  
Motor Screens (Fitted)

Makers of

MIRRORS—SPLASH BACKS—GLASS  
SHELVES & GLASS FIRE SCREENS

**HARRY CANHAM**

Cardboard Box

Packing Case, Ply Box and

Crate Manufacturer

9a, MARKET HILL, LUTON

TELEPHONE 458

## WAKE UP YOUR LIVER BILE

without Calomel—and you'll jump out of bed in  
the morning full of vim and vigour

YOUR LIVER should pour out  
two pints of liquid bile into  
your system daily. If this bile is  
not flowing freely, your food  
doesn't digest. It just decays  
inside you. Gas bloats up your  
stomach. You get constipated.  
Your whole system is poisoned  
and you feel sour, sunk, and the  
world looks punk.

Laxatives help a little, but a  
mere bowel movement doesn't

get at the cause. It takes those  
good old Carters Brand Little  
Liver Pills to get these two pints  
of bile flowing freely and make  
you feel "up and up." Harmless,  
gentle, yet amazing in making  
bile flow freely. Ask  
for Carters Brand Little  
Liver Pills.

Stubbornly refuse any-  
thing else. 1/3 and 3/- at  
all chemists.

NOW ALSO IN  
**PENNYWORTHS**  
EVERYWHERE

YOU'LL BE

## 'SCORING'

ALL THE TIME  
WHILE YOU ARE

### BUYING YOUR OWN HOUSE

Apply for particulars to the

**LUTON & MIDLANDS  
BUILDING SOCIETY**

Telephone: Luton 1067

11, George St.  
West  
LUTON

## WEBDALE'S

of WELLINGTON STREET

— FOR —

KITCHEN EQUIPMENT

AND ALL

HOUSEHOLD REQUIREMENTS

AT LOWEST PRICES

21 to 27, WELLINGTON STREET  
'Phone 41 LUTON



**Charnley**  
and Sons  
REGISTERED  
OPTICIANS

NATIONAL HEALTH  
INSURANCE

On the Official List of  
H.S.A. OPTICIANS

11, Wellington Street  
**LUTON**  
Telephone 1808

Over 50 years in the  
Printing Trade  
in Luton  
○○○○

**W. F. BUNKER**

WILL HELP YOU IN  
THE PRODUCTION  
OF YOUR PRINTING  
REQUIREMENTS

26a, CHAPEL STREET  
**LUTON**  
PHONE 224

**E. A. GREEN**

BOOKSELLER  
NEWSAGENT  
STATIONER

*Luton's Most Progressive  
Circulating Library*

21a, New Bedford Road  
and 228, Biscot Road  
**LUTON**  
Telephone 476

**F. WHITE**

BUILDER  
and  
CONTRACTOR  
141,  
Stockingstone Road  
**LUTON**

—□—  
ALL CLASSES OF  
REPAIRS, PAINTING  
AND DECORATING  
UNDERTAKEN

Estimates Free

**To-Day's Half-Time Scores  
THIRD LIST**

A  
B  
C  
D  
E  
F  
G  
H  
K  
L  
M  
N

**W. CHAMBERLAIN & Co.**  
Proprietors—  
A. M. Chamberlain  
R. Deadman

106, Dunstable Road  
**LUTON**

Best British Made  
Brushes and Brooms  
Enamel Ware  
City of London  
White Lead Paint

Messrs Merrediths & Co.  
Merlac Enamel Paints  
Fadeless Wall Paper  
Ask for Pattern Books

—□—  
A TRIAL SOLICITED

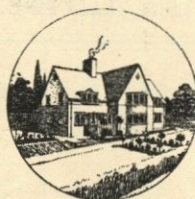
**W. HOLES**

3, Gordon Street, Luton  
Coal and  
Coke Merchant

Authorised Agent for  
Luton Gas Company's  
large and graded coke

Agent for  
L.M.S. Passenger Dept.

Telephone 210



TELEPHONE:  
LUTON 2126

**P. W. SMITH**

Builder — Contractor  
High Class Decorator

418, DUNSTABLE ROAD  
**LUTON**



**LUTON BOBBERS STAND CLUB**

President: P. W. Wright, Esq.

Vice-Chairman: E. G. Gibbs, Esq.

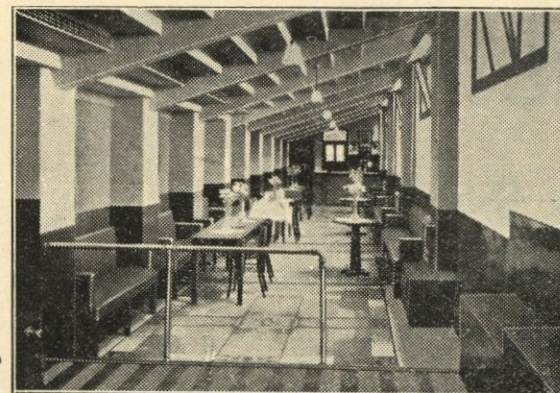
Hon. Secretary: Mr. A. C. Wright

Hon. Treasurer: Mr. J. Collier

Committee:

Messrs W. Banks, F. Cooper, A. Flitton,  
N. Lines, S. Setchell, R. G. Smith

TELEPHONE 2566



### A FEW NOTES OF INTEREST

For the interest of the Members for the autumn and winter evenings, various sports activities have been arranged for their welfare. The Committee have decided to enter The Luton and District Skittles League, and also have entered 3 teams in the 'Peoples' National Darts Tournament Championship. We shall await with interest the progress made in these events.

A Thrift Club has been formed for the Members, which is already showing lively activity, as the benefits of this Club are very entertaining to its Members. We offer a hearty invitation to any football supporter who is not a Member of the Club to pay us a visit, when we feel sure after seeing the Club for yourselves, you will become Members.

## THE CENTRAL RESTAURANT

20/22/24, CHEAPSIDE  
**LUTON**

○○○

SEATING FOR 300 ESTABLISHED 60 YEARS

Phone 172 and book a table  
and have your meal in comfort

WE CAN CATER FOR YOU  
ANYWHERE  
ANY TIME  
ANY NUMBER

**A. E. NICHOLLS**

Wholesale  
CONFECTIONER & TOBACCONIST

CAN SUPPLY YOU WITH  
EVERYTHING YOU WANT  
FOR THE TOBACCO AND  
CONFECTIONERY TRADE  
AT LOWEST PRICES



Prompt Delivery and Civility

16, MILL STREET, LUTON

'Phone: Luton 902



# CHARLES JEYES LTD.

The Reliable Firm for  
ALL CLASSES OF BUILDINGS  
AND DECORATIONS

BUILDING SITES IN THE BEST  
PARTS OF THE TOWN

REPAIRS OF ALL KINDS A  
SPECIALITY

17a, WINDSOR STREET, LUTON

TELEPHONE 594

# USED CARS

## *Reconditioned*

### TO A DEFINITE SPECIFICATION!

— AT —

## Luton Motor Co. LTD.

BEECH HILL, DUNSTABLE ROAD  
LUTON

'Phone 15

When we sell you a Used Car, our reputation depends on seeing that you are completely satisfied. With our reconditioned used cars we give you a **2-day money-back guarantee**. Buy from us and you'll get a reliable car at a reasonable price!

### EXAMPLES

can be seen  
at our Showroom  
or  
Chaul End Depot

FORD DEALER

## Football League Division II — RESULTS AT A GLANCE

[illegible]



## FIXTURES, 1938 - 9

FIRST XI Division II		F. A.	
Sat., Aug. 27	West Bromwich Albion	...	0 3
Wed., " 31	Newcastle United	4 1	A H

Sat., Sept. 3	Norwich City	...	1 1 H
Mon., " 5	Coventry City	...	1 2 A
Sat., " 10	Manchester City	...	...
Sat., " 17	Plymouth Argyle	4 2	A
Sat., " 24	Sheffield United	2 3	H

Sat., Oct. 1	Burnley	...	2 3 A
Sat., " 8	Tottenham Hotspur	...	2 4 H
Sat., " 15	Bradford	...	4 2 H
Sat., " 22	Swansea Town	...	1 1 A
Sat., " 29	Blackburn Rovers	...	4 1 H

Sat., Nov. 5	Tranmere Rovers	...	A
Sat., " 12	West Ham United	...	2 2 H
Sat., " 19	Bury	...	4 3 A
Sat., " 26	Sheffield Wednesday	...	2 2 H

Sat., Dec. 3	Fulham	...	1 4 A
Sat., " 10	Chesterfield	...	1 1 H
Sat., " 17	Millwall	...	...
Sat., " 24	West Bromwich Albion	...	H
Mon., " 26	Nottingham Forest	...	0 1 A
Tues., " 27	Nottingham Forest	...	2 2 H
Sat., " 31	Norwich City	...	4 0 A

Sat., Jan. 7	Manchester City	...	H
Sat., " 14	Plymouth Argyle	...	1 1 H
Sat., " 21	Sheffield United	...	0 2 A

Sat., Feb. 4	Burnley	...	3 1 H
Sat., " 11	Tottenham Hotspur	...	0 3 A
Sat., " 18	Bradford	...	1 1 A
Sat., " 25	Swansea Town	...	5 1 H

Sat., Mar. 4	Blackburn Rovers	...	2 2 A
Sat., " 11	Tranmere Rovers	...	H
Sat., " 18	West Ham United	...	0 0 A
Sat., " 25	Bury	...	0 1 H

Sat., April 1	Sheffield Wednesday	...	0 4 A
Fri., " 7	Southampton	...	1 3 H
Sat., " 8	Fulham	...	4 0 H
Mon., " 10	Southampton	...	6 3 A
Sat., " 15	Chesterfield	...	2 5 A
Sat., " 22	Millwall	...	H
Sat., " 29	Newcastle United	...	3 1 A

Sat., May 6	Coventry City	...	1 4 H
-------------	---------------	-----	-------

## RESERVE FIXTURES London Combination F. A.

Sat., Aug. 27	Brighton & Hove A.	...	6 2 H
Mon., " 29	Millwall	...	0 3 A

Sat., Sept. 3	Bournemouth	...	1 1 A
Wed., " 7	Tottenham Hotspur	...	0 2 H
Sat., " 10	Watford	...	2 0 H
Sat., " 17	Southend United	...	3 1 H
Mon., " 19	Tottenham Hotspur	...	3 5 A
Sat., " 24	Queens Park Rangers	...	0 4 A
Wed., " 28	Southampton	...	2 0 A

Sat., Oct. 1	Chelsea	...	1 1 H
Wed., " 5	Leicester City	...	0 1 H
Sat., " 8	Charlton Athletic	...	0 4 A
Mon., " 10	Leicester City	...	1 4 A
Sat., " 15	Fulham	...	1 5 A
Sat., " 22	Brentford	...	0 0 H
Sat., " 29	Arsenal	...	0 1 A

Sat., Nov. 5	Clapton Orient	...	3 0 H
Sat., " 12	Portsmouth	...	0 0 A
Sat., " 19	West Ham	...	0 1 H
Sat., " 26	Northampton Town	...	1 1 A

Sat., Dec. 3	Bristol City	...	3 1 H
Sat., " 10	Swansea Town	...	1 0 A
Sat., " 17	Crystal Palace	...	6 1 H
Sat., " 24	Brighton & Hove A.	...	1 1 A
Mon., " 26	Southampton	...	2 1 H
Sat., " 31	Bournemouth	...	2 1 H

Sat., Jan. 7	Reading	...	3 1 H
Sat., " 14	Watford	...	2 3 A
Sat., " 21	Southend United	...	0 4 A
Sat., " 28	Queens Park Rangers	...	2 2 H

Sat., Feb. 4	Chelsea	...	2 6 A
Sat., " 11	Charlton Athletic	...	2 0 H
Sat., " 18	Fulham	...	3 0 H
Sat., " 25	Brentford	...	0 3 A

Sat., Mar. 4	Arsenal	...	1 2 H
Sat., " 11	Clapton Orient	...	7 0 A
Sat., " 18	Portsmouth	...	1 2 H
Sat., " 25	West Ham	...	1 1 A

Sat., April 1	Northampton Town	...	3 3 H
Fri., " 7	Coventry City	...	0 1 A
Sat., " 8	Bristol City	...	2 3 A
Mon., " 10	Coventry City	...	4 0 H
Sat., " 15	Swansea Town	...	1 1 H
Sat., " 22	Crystal Palace	...	3 1 A
Sat., " 29	Millwall	...	5 1 H

Sat., May 6	Reading	...	4 1 A
-------------	---------	-----	-------

## LEAGUE TABLES

## LEAGUE DIVISION II

	Pld.	Won	Lost	Drm.	For	Agst.	P.
Manchester City	2	2	0	0	8	0	4
Fulham	2	2	0	0	5	2	4
Blackburn Rovers	2	2	0	0	5	3	4
Sheffield United	2	1	0	1	2	0	3
Bradford	2	1	0	1	4	2	3
Sheffield Wednesday	2	1	0	1	5	3	3
Tottenham Hotspur	2	1	0	1	5	4	3
West Brom. A.	1	1	0	0	3	0	2
Newcastle United	1	1	0	0	2	1	2
Tranmere Rovers	2	1	1	0	4	3	2
Coventry City	2	0	0	2	1	1	2
Millwall	2	1	1	0	3	3	2
Burnley	1	0	0	1	1	1	1
Swansea Town	2	0	1	1	1	6	1
Plymouth Argyle	1	0	1	0	1	2	0
Southampton	1	0	1	0	1	2	0
West Ham United	2	0	2	0	3	5	0
Norwich City	1	0	1	0	1	3	0
Chesterfield	2	0	2	0	1	6	0
Notts Forest	1	0	1	0	0	2	0
LUTON TOWN	1	0	1	0	0	3	0
Bury	2	0	2	0	0	4	0

## LONDON COMBINATION

	Pld.	Won	Lost	Drm.	For	Agst.	P.
LUTON TOWN	2	2	0	0	7	2	4
West Ham United	2	1	0	1	10	4	3
Southend United	2	1	0	1	6	4	3
Fulham	2	1	0	1	3	2	3
Queens Park Rangers	1	1	0	0	6	0	2
Tottenham Hotspur	1	1	0	0	6	0	2
Coventry City	1	1	0	0	2	0	2
Arsenal	1	1	0	0	2	1	2
Bristol City	1	1	0	0	2	1	2
Leicester City	2	1	1	0	8	5	2
Charlton Athletic	1	0	0	1	1	1	1
Brentford	1	0	0	1	2	2	1
Watford	1	0	0	1	2	2	1
Bournemouth	1	0	0	1	3	3	1
Crystal Palace	1	0	0	1	3	3	1
Swansea Town	2	0	1	1	3	8	1
Southampton	2	0	1	1	3	9	1
Brighton & Hove A.	1	0	1	0	1	2	0
Portsmouth	1	0	1	0	1	2	0
Millwall	2	0	2	0	2	7	0
Northampton	2	0	2	0	0	3	0
Clapton O.	1	0	1	0	0	6	0
Reading	1	0	1	0	0	6	0
Chelsea	0	0	0	0	0	0	0

# Edward Martell

## & Co., Ltd.

TELEPHONE  
896-7

Coal and Coke Merchants

ESTABLISHED  
1879

24, UPPER GEORGE STREET, LUTON

## Burn "Hucknall" Ashless Coal

### It Scores Every Time!!

Popular Price! Saves Labour!! Great Heat!!!

WHY NOT TRY IT?

## CARRY ON LUTON TOWN!

a packet of  
**SWEET  
ROSEMARY**  
TOBACCO

is always enjoyable  
~~~~~  
**W. & F. FAULKNER**  
**LONDON**

BRANCH OF THE IMPERIAL TOBACCO CO.  
(OF GREAT BRITAIN AND IRELAND), LIMITED

## KODAK, ENSIGN & AGFA CAMERAS & FILMS

Developing, Printing  
and Enlarging by  
experts, high class  
work at reasonable  
prices

## A. G. PRATT

M.P.S., F.S.M.C.

PHOTOGRAPHIC CHEMIST  
AND OPTICIAN

169, DUNSTABLE ROAD, LUTON

'PHONE 708



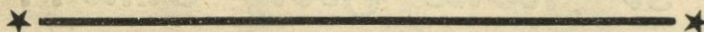
# FOOTBALL AHEAD!



We can supply all your  
football equipment

FOOTBALLS, JERSEYS,  
KNICKERS, SHINGUARDS,  
HOSE, BOOTS, GOAL  
NETS, KIT BAGS, ETC.

Every requisite at lowest prices. Special terms to Clubs  
Send for our Winter Sports List today. It is Free.



When you are buying a bicycle  
ask yourself these questions—

Is it individually produced in  
the world's largest and best  
equipped cycle factory?  
Has it an exclusive design which  
ensures easiest possible running?  
Is the plating and enamel extra  
thick to withstand the most  
inclement weather?

—the Raleigh is the answer to these  
questions. It will give you the finest  
possible cycle value because it is superior  
even to the spokes.

From **£5/10/-** Cash  
**OR EASY TERMS**  
Write for Catalogue



## RALEIGH

THE ALL-STEEL BICYCLE

FROM

*A. G. Partridge & Co*

PHONE 234

10-12 CHAPEL ST.  
LUTON