



LUTON TOWN FOOTBALL AND ATHLETIC CO. LTD.

OFFICIAL
JOURNAL

PRICE 2d



League—Division II

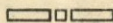
April 18th, 1938.

LUTON TOWN v. NOTTINGHAM FOREST

“TRUE-FORM”
THE FINEST FOOTWEAR
IN THE TOWN



BUY DIRECT FROM THE MAKERS



LOCAL BRANCH:

44, GEORGE STREET

Head Office and Factories: NORTHAMPTON

Insist upon the
Building Materials for
your new house coming from

POWDRILL'S

BUILDERS' MERCHANTS
COAL and COKE MERCHANTS
BRICK MANUFACTURERS
SAND & GRAVEL QUARRY OWNERS

GEORGE POWDRILL & SON LTD., 1, 3 & 5, HITCHIN ROAD, LUTON
TELEPHONE 2073 (2 Lines)

CH = = CH

means nothing

unless

U R

in it

CHAPEL STREET METHODIST CHURCH
welcomes you every Sunday
at 10.45 a.m. and 6 p.m.

Luton  Town
Football and Athletic Co.,

LIMITED

Telephone No. 3151-2.

President: Alderman Harry Arnold, C.A., J.P.

Directors:

Chairman: Alderman Chas. Jeyes, C.C.

Messrs E. Hugh Woods, (Vice-Chairman) Frank J. Andrews, Stanley H. Godfrey, C.A.,

Horace S. Hewson, Percival G. Mitchell, Henry Richardson, C.C., Philip W. Wright.

Secretary: Mr. A. E. Wickson.

Honorary Medical Officer: E. J. Crarer, M.B., Ch.B.

Honorary Solicitors: Messrs Machin & Co., 17-19, George Street West, Luton.

CLUB NOTES by "Hatter"

THIS afternoon we extend a very cordial welcome to Notts Forest, who will doubtless include our old Manager, Harold Wightman and who now occupies a similar position with the Forest Club. Now as these notes are written before Friday's game I cannot say whether we hope to get our own back, whether the Forest expect to get their own back, or whether we shall resume where we left off. Anyhow it can be assured that a terrific battle will ensue because both clubs want those points.

Now for a short history of the Forest Club. If age counted for anything in football, Notts Forest would occupy a higher place than it does now. The "Foresters" played "shinney," a game which is the father of hockey, but "shinney" or "bandy" did not satisfy the young men who played this old fashioned game on the Forest Recreation Ground. They wanted something better. Accordingly a meeting was called which brought into being the Nottingham Forest Football Club. The first match was a local Derby against the County in 1866. It has been described as a "great fight," a description which always is applicable whenever the Forest and the County meet. For some time membership of the Sheffield Association was obtained and in 1878-9 they made their first bid for the F.A. Cup. In this season the club made football history. It reached the semi-final stage to be beaten by the Old Etonians, the ultimate winners. The Forest were also the only English Club to play in an English F.A. Cup semi-final in Scotland. In 1889 a modified system of professionalism was recognised and in 1892-3 the club went into the First Division of the Football League. Since those days the "Foresters" have been up and down but they have never found an abiding place in Division III. The Cup has been won once in season 1897-8, whilst Sam Widdowson, one of the men playing for the Forest when the Club was in the making, invented a shin guard which he registered in 1874. It was the Forest Club too, who were responsible for the introduction of the referee's whistle (did someone say why?) which was used for the first time when they were at home to Sheffield Norfolk.

Immediately following this afternoon's game there will be a further game between the local League and East Ham Juniors, a team managed by our old player Jim Thompson.

The Editor thanks Mr. H. Brantom, of Vandyke Road, Leighton Buzzard, who submitted the following.

A Schoolmaster, who was also a keen football fan, decided to devote a few minutes every Monday to describe the previous Saturday's game to his boys. In one particular match, the goalkeeper, who was the captain of his side, gave a wonderful exhibition of goalkeeping. Describing it, the master said, "I don't know anyone other than this captain who could make such marvellous saves." One small boy put up his hand and said, "I do, sir!"

The Master, "Well, Willie, stand up and tell the class who it is!"

Willie, "The Salvation Army Captain!"

There was once a young footballer named Bert Whose boss said, "You're all negligence and shirk."

The reply from the boy—
"Its a blooming big lie
For I never neglect football for work!"

There was once a player named Battenham Who goalposts started a-smashing 'em.

He got such a clout
Which knocked him right out,
And the game was held up whilst both patching 'em!

No 1830

ATTENDANCE BAROMETER

1936		1937		1936			1937		
				£	s.	d.	£	s.	d.
Aug. 29	Aug. 28	Southend United Reserves	7346	167	0 3
Aug. 31		Southend United	...	14353	705	11 1			
		Southend United Reserves	...	3469	89	11 9			
	Sept. 1	Aston Villa	25349	1299	14 4
	Sept. 4	Manchester United	20610	994	1 2
Sept. 5		Portsmouth Reserves	...	6048	161	8 11			
Sept. 7		Walsall	...	11043	486	8 0			
	Sept. 8	Clapton Orient Reserves	4823	93	6 7
	Sept. 11	Chelsea Reserves	7725	175	7 7
Sept. 12		Crystal Palace	...	13790	707	18 3			
	Sept. 18	Tottenham Hotspur	23788	1235	7 8
Sept. 19		Tottenham Hotspur Reserves	...	5659	150	14 11			
Sept. 21		Leicester City Reserves	...	1585	39	18 11			
	Sept. 22	Leicester City Reserves	3626	69	19 2
	Sept. 25	Queens Park Rangers Reserves	6558	142	1 11
Sept. 26		Reading	...	16378	820	18 0			
	Oct. 2	Bury	17650	821	19 0
Oct. 3		Queens Park Rangers Reserves	...	3558	91	13 10			
	Oct. 9	Brighton and Hove Reserves	5236	107	4 10
Oct. 10		Bristol City	...	13255	629	1 7			
	Oct. 16	Swansea Town Reserves	6592	141	16 2
Oct. 17		Watford	...	20569	1071	17 1			
	Oct. 23	West Ham United	17757	897	18 10
Oct. 24		Southampton Reserves	...	4120	107	15 2			
	Oct. 30	Reading Reserves	5571	116	1 10
Oct. 31		Bournemouth	...	11305	591	16 2			
	Nov. 6	Blackburn Rovers	16776	818	16 6
Nov. 7		Fulham Reserves	...	3080	80	12 3			
	Nov. 13	Millwall Reserves	6929	149	18 5
Nov. 14		Bristol Rovers	...	12784	599	6 4			
	Nov. 20	Chesterfield	17088	802	11 10
Nov. 21		Millwall Reserves	...	3223	83	3 0			
	Nov. 27	Arsenal Reserves	7116	158	2 0
	Dec. 4	Fulham	13529	653	13 6
Dec. 5		Northampton Reserves	...	3452	90	4 1			
	Dec. 11	West Ham United Reserves	5487	114	16 2
	Dec. 18	Norwich City	14492	680	2 6
Dec. 19		Brighton & Hove Reserves	...	2935	77	1 4			
	Dec. 25	Barnsley	15829	756	3 8
Dec. 25		Notts County	...	17308	889	5 6			
Dec. 62		Reading Reserves	...	4102	112	6 9			
	Dec. 27	Coventry City Reserves	9178	223	9 9
Dec. 28		Clapton Orient Reserves	...	1808	46	16 1			
1937	1938			1937		1938			
Jan. 1	Jan. 1	Stockport County	...	12093	568	2 4	14138	644	7 8
	Jan. 8	Cardiff City	6672	148	19 9
Jan. 9		Northampton Town Reserves	...	3382	88	3 5			
	Jan. 15	Charlton Athletic Reserves	4941	101	0 8
Jan. 23		Portsmouth Reserves	...	10003	476	5 4			
	Jan. 29	Exeter City	4814	96	19 1
Feb. 1		Tottenham Hotspur Reserves
	Feb. 2	Chelsea Reserves	...	659	16	9 8			
	Feb. 5	Sheffield United	8414	378	17 8
Feb. 6		Burnley	14957	678	14 8
Feb. 13		Queens Park Rangers	...	13385	624	14 2			
	Feb. 19	Bristol City Reserves	...	2989	78	5 8			
Feb. 20		Coventry City	17188	819	10 6
	Feb. 26	Swansea Town Reserves	...	2070	52	3 10			
Feb. 27		Bradford	14494	655	6 2
	Mar. 5	Brighton & Hove Albion	...	19093	1023	12 0			
Mar. 6		Crystal Palace Reserves	4551	88	4 5
	Mar. 12	Brentford Reserves	...	3952	103	1 10			
Mar. 13		Southampton	14428	639	10 0
	Mar. 19	Northampton Town	...	19196	969	16 4			
Mar. 20		Fulham Reserves	4707	93	2 8
	Mar. 26	Arsenal Reserves	...	6436	170	16 7			
Mar. 26		Sheffield Wednesday	13216	580	9 10
Mar. 27		West Ham Reserves	...	4774	130	14 0			
Mar. 29		Millwall	...	18262	935	11 7			
	April 2	Clapton Orient	...	18165	921	9 11			
		Brentford Reserves	4366	83	13 8
Carried Forward				308283	13792	15 8	385941	15625	18 5

LUTON TOWN FOOTBALL AND ATHLETIC Co., Ltd.

OFFICIAL JOURNAL

ATTENDANCE BAROMETER—Continued.

ATTENDANCE BAROMETER—Continued.											
1937		1938		1937				1938			
				£ s. d.				£ s. d.			
Brought Forward				308283	13792	15	8	385941	15625	18	5
April 3		Coventry City Reserves	3752	97	4	9				
April 7		Gillingham	13032	599	8	11				
	April 9	Plymouth Argyle					11516	499	3	8
April 10		Aldershot	15124	728	17	2				
				340191	15218	6	6	397457	16125	2	1

N.B. The attendance figures for both League II and London Combination matches, include the number of Season Tickets issued. The gate receipts are the net amounts received after Entertainment Tax has been deducted. The attendance figures for the London Combination matches in Season 1936-7 do NOT include the number of Season Tickets issued.

PLAYERS' APPEARANCES

	League II		London Combination		F.A. Cup		Other Matches		Total	
	App.	Goals	App.	Goals	App.	Goals	App.	Goals	App.	Goals
Carte, R. ...	3		11				3		17	
Childs, C. ...			11				16		27	1
Coen J. L. ...	24		14		4		1		43	
Connelly, E. ...	4	1							4	1
Cox, G. ...			21	11			3	3	24	14
Dawes A. G. ...	23	11			3	1			26	12
Dolman, H. W. ...	12		14				1		27	
Dreyer, G. ...	1		22				6	1	29	1
Fellowes, W. J. ...	32	1	2		4				38	
Ferguson, C. ...	15	7	18	9	4	3	1	1	38	20
Finlayson, J. ...	34				4				38	
Gager, H. E. ...			6	1			13	3	19	4
Griffiths, E. O. ...	6	1	8	3			1		15	4
Hall, L. ...			11	1			14	1	25	2
Hancock, E. ...	8	2	18	4			3		29	6
Hogg, F. ...	4		23	3			8	2	35	5
Kidd, G. I. ...			30	1					30	1
King, T. P. ...	14		12		1		1		28	
Lewis, J. ...	2		2				1		5	
Loughran, J. ...	8		24	1					32	2
Lutterloch, B. R. ...	6		32						38	
McKay, N. V. ...			4				4	2	8	2
Mackey, T. S. ...	17	2	13		3				33	2
Mayberry, S. ...			9				4		13	
Nelson, J. ...	31		1		4				36	
Parris, J. E. ...	5	2	7	1					12	3
Payne, J. ...	22	15	2	3	1	1			25	19
Redfern, W. J. ...	7	4	25	14			2		34	19
Rich, L. T. ...			15	6			9	5	24	11
Roberts, F. ...	33	10	4		4				39	10
Smith, T. S. ...	32		2		4				38	
Stephenson, G. H. ...	29	5	4		4	2			37	7
Stevens, R. F. ...	3	1	30	14			5	3	38	18
Strathie J. ...			27				6	1	33	1
Vinall, E. J. ...	23	11	1		4	2			28	13
Amateurs and Others ...			6	1			85	8	91	9

Next Match, Tuesday, April 19th, 1938.

LONDON COMBINATION

LUTON TOWN RESERVES v. BRISTOL CITY RESERVES

KICK-OFF 6 p.m.

ADMISSION Centre Stand 1/6

Stand and Enclosure 1/- Ladies and Boys 6d. :: Ground 6d. Boys 3d.

All Prices include Entertainment Tax

MILTON ROAD (within 8 minutes' walk of Town Hall).—MODERN HOUSES complete with every convenience, now being erected. There are three types at prices from £575 or £30 deposit and 15/2 per week, with NO ROAD OR LEGAL CHARGES. Intending purchasers are advised to make early application to ensure a good position on this convenient and well situated estate.

£30 TOTAL DEPOSIT, NO OTHER CHARGES — EATON GARDENS ESTATE. Well built, S.D. HOUSES, between Vauxhall and Airport; cavity walls; slate damp course; kitchen and bathroom tiled; indoor sanitation. REPAYMENTS 14/9 weekly.

SELL & MITCHELL

Auctioneers, Land and Estate Agents Surveyors and Valuers

7-9, PRINCESS STREET
LUTON

Also 95, HIGH STREET NORTH
DUNSTABLE

TELEPHONES 2003-4

ESTABLISHED 1879

Telephone 354

District Agents for Woolwich Equitable Building Society

TO
LET

To-Day's Half-Time Scores FIRST LIST

A	Bolton W. v. Manchester C.
B	Charlton Athletic v. Blackpool
C	Derby County v. Huddersfield
D	Leicester C. v. Wolverhampton
E	Liverpool v. Middlesbrough
F	Portsmouth v. Grimsby Town
G	Stoke City v. Leeds United
H	Sunderland v. Everton
K	West Brom v. Birmingham
L	Blackburn v. Sheffield Wed.
M	Bradford v. Chesterfield
N	Manchester U. v. Burnley

NOTE—The Letter in the Programme corresponds with the letter on the Board—thus A 0-1 means that the first-named Club has scored 0 and their opponents 1.

MONO  BRAND
REGD.

SPECIALITIES

Paint and Enamel
Manufacturers
"Stuart" Series
Wallpapers

**OGDEN &
CLEAVER**

Stuart Street, LUTON

TELEPHONE 580

Alma G. Peck

BUILDER — CONTRACTOR — DECORATOR

5 and 7, WENLOCK STREET

LUTON

PHONES 1752- 3095



Clothes for Men with a Taste for Style!

The more critical you are, the more you will be satisfied with your purchases from Blundells. Up-to-date styles... dependable qualities... supreme values, await you here. Every item of wear, from socks to hat, at the keenest of prices.

BLUNDELL Bros. (LUTON) LTD.
MEN'S DEPT. 12, CHEAPSIDE, LUTON.

'WHITE'S'
have again
supplied

Luton Town
Football Club
with their Boots

They know
the Best

H. WHITE (Luton) LTD.,
Footwear Specialists,
MANCHESTER STREET.

To-Day's Half-Time Scores SECOND LIST

A	Plymouth v. West Ham
B	Sheffield U. v. Tottenham H.
C	Southampton v. Fulham
D	Stockport County v. Bury
E	Swansea Town v. Aston Villa
F	Bristol Rovers v. Cardiff City
G	Exeter City v. Reading
H	Gillingham v. Crystal Palace
K	Northampton v. Walsall
L	Notts County v. Watford
M	Swindon Town v. Millwall
N	Torquay U. v. Brighton & H.

● When passing
through

HARPENDEN

pay a visit to

"The
**MARQUIS of
GRANBY**"

PROPRIETOR - TOM HODGSON
(Ex-Capt., Luton Town F.C.)

FULLY LICENSED

TEA GARDENS

For the

Assurance of getting correct

Results this season

Rely exclusively on the

Best. Get what you

Expect NOW by

Selecting 'FARRBEST' every

Time you buy a Machine.

GEO. F. FARR, The "Farrbest" Hatter's Engineer
COLLINGDON STREET, LUTON

ESTABLISHED 1909

Telephone:
Luton 2055 (2 lines)

Telegrams:
"Farrbest," Luton

MARES

for men's
JAEGER
for
WARMTH

Charles
MARES Limited
George Street & Dunstable Road
LUTON And at St. Albans

TODAY
PALACE THEATRE
LUTON
TODAY

TYRONE POWER LORETTA YOUNG
— IN —

"SECOND HONEYMOON" (A)

NEXT WEEK

ANNABELLA and
DAVID NIVEN in
(U)

NEXT WEEK

"DINNER at the RITZ"

STICK TO BEER!

YOU, TOO,
will prefer
J.W. GREEN'S

J. W. GREEN LIMITED, The Brewery, LUTON

Telephone - Luton 3131

L-M-S RAILWAY

From **LUTON** to **LONDON**
2/6

Weekdays—Any train after 12 noon
Sundays—Any train

GET IT TODAY!
"HOLIDAYS BY L.M.S."
6d.

Fully illustrated and descriptive
Over 6,000 addresses

— On Sale at —
L.M.S. STATIONS, BOOKSTALLS, ETC.

Now is the time to
choose your *Tennis*
Racket or Cricket
— Bat —

All Leading Makes in Stock
Club Secretaries
are invited to
inspect our stock
Rackets Re-Strung
and Repaired on the premises
at shortest notice

Darts and Dartboards
a speciality

Various Garden Games for Easter

G. A. WILD
AND SONS
Sports Outfitters

14, Manchester Street, Luton
103, High Street N., Dunstable

BOOK AT BAILEY'S FOR

LONDON COASTAL COACHES
ALL INDEPENDENT SERVICES

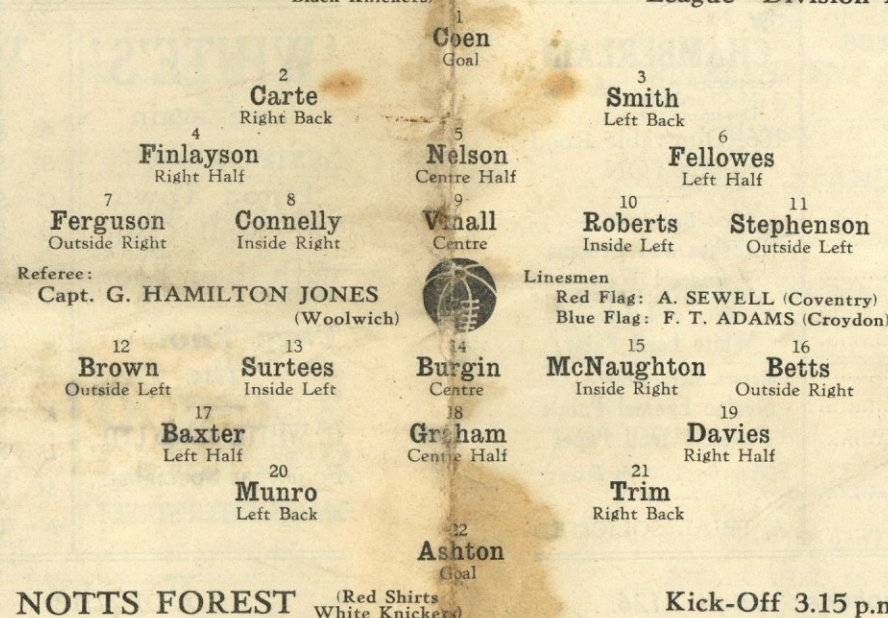
JERSEY AIRWAYS
LONDON THEATRES
AND
AMUSEMENTS

Daily Services to all
parts of Great Britain

TOBACCONIST
AND BOOKING AGENT

38, NEW BEDFORD ROAD
LUTON
Phone 1972

LUTON TOWN (White Shirts
Black Knickers)



NOTTS FOREST (Red Shirts
White Knickers)

League—Division II

Kick-Off 3.15 p.m.

WE'RE THERE!

BIRD'S

for
BUILDING
AND DECORATIVE
MATERIALS

CHARLES BIRD & SONS, Limited
Collingdon Street, LUTON
Telephone 1255

— Also —
Corrugated Iron, Wire Netting,
Chain Link Fencing, Chestnut
Paling, Creosote and Garden
Sundries

HARRY CANHAM

Cardboard Box
Packing Case, Ply Box and
Crate Manufacturer
9a, MARKET HILL, LUTON
TELEPHONE 458

For a GOOD DINNER
TEA or SUPPER

by
J. BEDDALL

PARTIES CATERED FOR
SATISFACTION ASSURED

67, LEAGRAVE ROAD
LUTON

A few minutes walk from the
Football Ground

MAD HATTER

The Cocktail with a Kick

Per
Bottle 3/6

Per
Half-Bottle 2/-

R. H. Marks Ltd.

WINE AND SPIRIT MERCHANTS
69, George Street
and at 81, High Town Road
Luton

You'll be
"SCORING"

all the time while you are
BUYING YOUR OWN HOUSE

Apply for particulars to the
**LUTON & MIDLANDS
BUILDING SOCIETY**
11, George St.
West
LUTON

Telephone: Luton 1067

WEBDALE'S
of WELLINGTON STREET

FOR
Kitchen Equipment
AND ALL
Household Requirements

AT LOWEST PRICES

21 to 27 WELLINGTON STREET
Phone: Luton 41 LUTON

Charnley
and Sons
REGISTERED
OPTICIANS

National Health
Insurance

On the Official List of
H.S.A. Opticians

11, Wellington Street
LUTON
Telephone 1808

We are offering
GENUINE 10/6
FOUNTAIN PENS

for
5/6

Nibs to suit all
°°°°°

W. F. BUNKER
"Fountpen Hospital"
26a, Chapel St., Luton
PHONE 224

E. A. GREEN
BOOKSELLER
NEWSAGENT
STATIONER

Luton's Most
Progressive Circulating
Library

21a, New Bedford Road
and 228, Biscot Road
LUTON
Telephone 476

F. WHITE

Builder
and
Contractor

141,
Stockingstone Road
LUTON



All Classes of
Repairs, Painting and
Decorating Under-
taken

ESTIMATES FREE

To-Day's Half-Time Scores
THIRD LIST

A	Gateshead v. Oldham
B	Hull City v. Port Vale
C	Lincoln City v. Crewe Alex.
	3-30 KICK-OFFS	
D	Brentford v. Arsenal
E	Barnsley v. Coventry City
F	Norwich City v. Newcastle U.
G	Mansfield T. v. Bournemouth
H	Newport C. v. Bristol City
K	Queens P. R. v. Clapton Orient
L	Southend United v. Aldershot
	RESULTS	
M	Preston North End v. Chelsea
N	Torquay United v. Brighton

W. CHAMBERLAIN
Proprietors—
A. M. Chamberlain & Co.
R. Deadman
106, Dunstable Road
LUTON

Best British Made
Brushes and Brooms
Enamel Ware
City of London
White Lead Paint

Messrs Merrediths & Co.
Merlac Enamel Paints
Fadeless Wall Paper
Ask for Pattern Books

A TRIAL SOLICITED

W. HOLES

3, Gordon Street, Luton
Coal and
Coke Merchant

Authorised Agent for
Luton Gas Company's
large and graded coke

o

Agent for
L.M.S. Passenger Dept.

Telephone 210

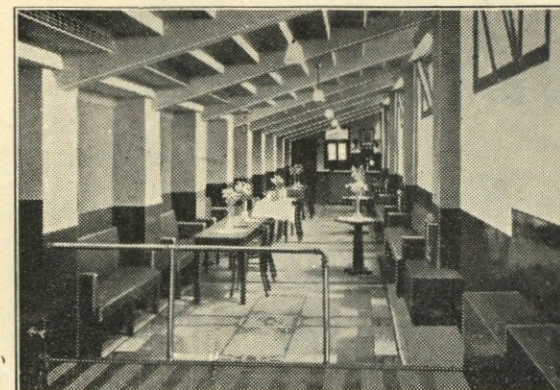
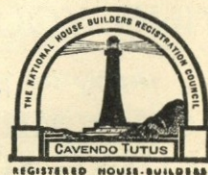


Telephone: Luton 2126.

P. W. SMITH,
BUILDER

HIGH CLASS DECORATOR
CONTRACTOR

418, Dunstable Road,
Luton.



BOBBERS STAND CLUB

President: P. W. Wright, Esq.

Hon. Secretary-Treasurer: J. Collier.

Committee: Messrs F. Cooper, F. Dean,
A. Flitton, E. Gibbs, J. Meades, S. Setchell.

'Phone 2566.

JOIN THE

BOBBERS STAND

CLUB

Only 1/2 per year

Refreshments can be obtained

at any of the

REFRESHMENT BARS

and also in the

BOBBERS STAND CLUB

at any time

before, during or after the match

*Luton's Oldest and Largest
Restaurant*

SEATING ACCOMMODATION FOR 300

ESTABLISHED 65 YEARS

Private Parties Catered For

**CENTRAL
RESTAURANT**

20-22-24, CHEAPSIDE

PHONE 172

Proprietor: S. G. Primett

A. E.

NICHOLLS

Wholesale

CONFECTIONER & TOBACCONIST

CAN SUPPLY YOU WITH
EVERYTHING YOU WANT
FOR THE TOBACCO AND
CONFECTIONERY TRADE
AT LOWEST PRICES



Prompt Delivery and Civility

16, MILL STREET, LUTON

'Phone: Luton 902

The Reliable Firm for
ALL CLASSES OF BUILDINGS
AND DECORATIONS

REPAIRS OF ALL KINDS A
SPECIALITY

TELEPHONE 594

ITS POWER-UNIT,
transmission, suspension, steer-
ing, brakes, all-steel body-
construction, weather-proof
finish give confidence, comfort
and safety.

ITS PRICE at the outset, running costs, maintenance charges, are all well within the contemplation even of the most economically inclined, yet its efficiency in every direction proves itself more definitely every day.

LUTON MOTOR CO., LTD.,
BEECH HILL - DUNSTABLE ROAD - LUTON

Exclusive Ford Dealers and Wholesale Distributors for Luton, Dunstable and District.

'Phone 15

FOOTBALL LEAGUE DIVISION II

RESULTS AT A GLANCE

	Aston Villa	Barnsley	Blackburn R.	Bradford	Burnley	Bury	Chesterfield	Coventry City	Fulham	Luton T.	Manch. U.	Newcastle U.	Norwich City	Notts Forest	Plymouth A.	Sheffield U.	Sheffield W.	Southampton	Stockport C.	Swansea T.	Tottenham H.	West Ham
Aston Villa	H 3 0 +	2 1 1 0	2 1 0 3	0 3 2 1	0 3 2 1	1 1 1 0	2 0 1 0	1 0 1 0	2 0 4 1	4 3 3 0	3 0 1 3	2 0 2 0	0 1 2 0	1 2 1 2	3 0 3 0	3 0 1 0	4 3 2 1	3 0 0 0	7 1
Barnsley	H 0 1 0 3 +	0 0 1 1	0 0 3 5	3 4 0 1	2 2 0 1	2 2 2 0	1 1 0 0	1 0 1 0	0 0 3 1	3 1 2 2	2 2 1 4	3 0 1 0	0 1 1 2	1 2 1 2	3 2 0 4	3 6 1 0	4 1 1 0	0 2 2 0	2 0	2 0	2 0	1 1 1 3
Blackburn Rovers	H 1 0 5 3	0 0 1 2	0 0 5 3	0 0 1 7	3 3 2 1	2 1 3 3	3 3 1 0	1 3 2 3	2 2 2 2	2 4 1 1	1 2 0 2	2 1 2 1	5 3 2 3	1 3 1 3	2 1 2 2	2 3 2 1	4 0 0 1	3 0 1 0	2 3	1 3	2 1
Bradford	H 1 2 4 3	7 1 0 0	7 1 0 0	1 1 1 1	1 1 1 1	0 1 0 1	1 2 1 2	2 4 1 0	2 0 2 1	2 1	1 0	1 2	1 3
Burnley	H 3 0 1 0	0 2 2 3	3 3 0 0	1 1 1 1	2 0 0 4	0 2 1 0	2 0 1 1	1 2 1 3	3 2 1 1	2 1 2 2	3 0 1 1	0 0 0 0	0 2 1 3	2 0 1 1	1 1 1 2	4 0 0 0	0 0 1 2	2 0	2 1	2 0
Bury	H 1 1 2 2	2 1 1 2	2 1 1 2	5 1 1 1	4 0 1 2	4 0 2 1	0 2 2 0	4 2 3 4	3 4 1 0	1 2 1 1	0 1 0 1	3 1 2 1	2 0 0 1	2 0 1 2	1 2 1 2	0 2 1 4	2 1 2 1	0 0 1 3	0 1 3 1	4 3
Chesterfield	H 0 1 0 0	3 0 1 1	3 0 1 1	0 1 2 0	1 2 1 1	2 2 1 1	5 2 1 1	1 7 1 1	1 7 1 1	6 2 1 2	2 4 1 1	2 0 1 1	1 0 1 0	1 0 5 0	1 1 1 0	1 1 0 1	0 1 2 2	0 5
Coventry City	H 0 1 1 1	3 2 3 1	0 0 3 0	1 0 2 0	0 2 2 0	2 2 1 1	4 3 4 1	2 1 4 1	1 0 2 2	1 0 1 0	2 0 2 0	1 1 2 0	1 1 4 0	2 3 1 1	0 1 1 2	2 0 1 2	1 0 5 0	5 0 2 1	1 1 0 1	1 1
Fulham	H 1 1 0 0	2 2 2 2	1 1 2 1	0 1 2 1	2 4 2 0	1 1 2 0	3 4 1 1	0 4 0 1	0 1 2 1	1 2 2 1	3 4 2 1	2 1 1 0	2 3 0 4	1 2 1 1	0 0 1 2	2 0 2 0	8 1 3 1	3 1 1 1	0 0
LUTON TOWN	H 3 2 4 0	1 3 2 2	4 2 1 1	4 2 3 1	2 3 1 1	0 1 1 1	1 1 2 5	1 1 4 2	4 0 1 1	1 0 2 4	3 1 3 1	1 1 1 1	1 4 2 2	2 3 2 4	2 2 2 4	6 3 1 2	1 3 6 4	1 1 2 4	0 3 0 0	2 2
Manchester United	H 3 1 4 1	2 1 2 1	2 1 1 1	0 4 1 0	4 1 7 1	2 2 0 1	1 0 0 1	4 2 0 1	3 0 2 2	0 0 5 2	4 3 2 3	0 0 1 1	0 1 1 0	1 0 3 1	1 2 3 3	3 1 0 1	5 1 0 1	1 0 4 0
Newcastle United	H 2 0 0 1	2 0 1 2	2 0 1 2	3 0 2 1	2 2 1 1	0 1 2 1	2 1 2 1	1 3 0 3	2 3 0 3	0 0 1 2	1 2 4 0	0 4 1 0	0 1 3 0	1 0 0 1	1 0 2 2	0 1 2 2	0 1
Norwich City	H 1 0 1 0	1 0 3 2	1 1 3 5	0 3 1 2	0 3 1 1	2 1 2 1	0 2 1 1	1 2 4 3	1 1 1 1	2 3 0 3	2 0 4 0	1 1 1 1	1 4 0 1	3 1 1 0	4 3 1 3	1 0 1 0	1 1 0 1	2 1 2 2	0 1
Notts Forest	H 0 2 2 1	3 1 1 0	3 1 1 0	1 1 2 2	1 1 0 1	0 0 0 2	0 4 2 1	1 1 0 1	0 1 0 1	2 2 3 4	0 0 1 3	1 2 0 1	0 1 2 2	2 1 1 2	0 1 2 1	0 2 0 1	1 2 2 1	2 1 0 1	3 1 0 3	1 2
Plymouth Argyle	H 0 3 2 3	2 2 1 2	2 2 1 2	0 2 2 0	2 3 2 1	1 1 0 2	1 1 0 2	0 4 3 2	4 0 3 2	2 4 1 1	1 1 0 0	2 1 1 3	0 4 1 1	1 0 1 0	2 0 2 4	2 1 1 1	5 0 0 0	2 0 3 1	2 1 0 1	2 2 2 3
Sheffield United	H 0 0 6 3	1 1 1 3	1 1 3 2	1 5 0 2	2 1 0 1	0 1 0 1	0 1 0 1	2 2 1 2	2 1 1 3	2 2 1 3	1 0 0 6	4 0 0 6	4 1 1 2	2 1 0 2	0 0 0 0	2 1 1 0	2 0 1 1	2 0 1 1	1 1 5 3	2 0
Sheffield Wednesday	H 1 2 0 1	1 0 1 1	0 1 0 1	2 1 1 0	0 0 2 2	2 2 0 1	0 3 1 3	0 1 0 1	1 3 0 1	0 1 4 2	1 2 0 1	0 0 3 3	3 3 1 1	1 1 0 3	1 0 1 0
Southampton	H 0 0 2 0	2 0 2 0	1 0 0 4	2 1 0 2	0 4 1 2	0 5 0 2	0 1 0 1	0 2 0 2	3 6 3 1	3 3 2 1	3 3 1 0	3 1 0 3	3 4 1 2	2 0 0 0	0 0 0 0	0 5 0 0	5 2 0 0	4 1 0 0	1 1 1 1	2 1 3 3	1 3
Stockport County	H 1 7 0 2	0 3 1 2	0 1 1 2	2 1 0 0	1 1 1 1	0 1 0 1	0 2 4 6	1 3 1 0	1 3 0 0	0 1 2 1	1 1 2 1	1 0 1 0	1 3 1 2	1 1 3 3	3 3 1 4	0 0 1 0	2 0 2 0	3 2 0 0	0 0
Swansea Town	H 1 0 2 1	3 2 0 1	3 2 0 1	3 1 0 2	1 0 1 4	0 5 1 0	2 0 1 1	1 1 1 5	0 1 1 2	0 1 1 1	1 1 1 1	1 0 1 2	2 2 1 1	1 1 1 1	1 1 0 0	0 2 1 1	0 2 0 1	3 2 0 2	1 2
Tottenham Hotspur	H 2 1 3 0	3 1 1 1	3 1 1 3	1 2 1 1	4 0 1 3	2 0 1 1	2 2 1 2	1 2 1 1	1 3 4 2	1 0 4 2	0 1 1 0	2 2 2 2	4 0 1 2	3 0 1 3	3 2 2 2	3 0 0 2	3 0 1 1	1 2 3 3	2 0 2 3	2 0 3 1	2 0
West Ham	H 1 1 4 1	2 0 1 1	2 0 1 2	3 1 1 2	1 0 2 0	3 4 1 0	5 0 1 0	0 0 0 0	0 0 2 2	0 4 0 0	0 4 2 2	1 0 2 2	3 3 2 1	2 1 0 0	0 2 1 0	0 2 0 1	3 1 3 3	2 1 2 3	1 3 0 0

FIXTURES 1937-8

FIRST XI Division II

F. A.

Sat., Aug. 28	Stockport County	A	1	2
Wed., Sept. 1	Aston Villa	H	3	2
Sat., " 4	Manchester United	H	1	0
Mon., " 6	Aston Villa	A	1	4
Sat., " 11	Sheffield United	A	0	2
Wed., " 15	Newcastle United	A	3	1
Sat., " 18	Tottenham Hotspur	H	2	4
Sat., " 25	Burnley	A	2	3
Sat., Oct. 2	Bury	H	0	1
Sat., " 9	Coventry City	A	1	2
Sat., " 16	Bradford	A	1	1
Sat., " 23	West Ham United	H	2	2
Sat., " 30	Southampton	A	6	3
Sat., Nov. 6	Blackburn Rovers	H	4	1
Sat., " 13	Sheffield Wednesday	A	0	4
Sat., " 20	Chesterfield	H	1	1
Sat., " 27	Plymouth Argyle	A	4	2
Sat., Dec. 4	Fulham	H	4	0
Sat., " 11	Swansea Town	A	1	1
Sat., " 18	Norwich City	H	1	1
Sat., " 25	Barnsley	H	4	0
Mon., " 27	Barnsley	A	1	3
Sat., Jan. 1	Stockport County	H	6	4
Sat., " 8	Scarborough (F.A. Cup)	A	1	1
Wed., " 12	Scarborough (F.A. Cup Replay)	H	5	1
Sat., " 15	Manchester United	A	2	4
Sat., " 22	Swindon Town (F.A. Cup)	H	2	1
Sat., " 29	Tottenham Hotspur	A	0	3
Wed., Feb. 2	Sheffield United	H	2	3
Sat., " 5	Burnley	H	3	1
Sat., " 12	Manchester City (F.A. Cup)	H	1	3
Wed., " 16	Bury	A	4	3
Sat., " 19	Coventry City	H	1	4
Sat., " 26	Bradford	H	4	2
Sat., Mar. 5	West Ham United	A	0	0
Sat., " 12	Southampton	H	1	3
Sat., " 19	Blackburn Rovers	A	2	2
Sat., " 26	Sheffield Wednesday	H	2	2
Sat., April 2	Chesterfield	A	2	5
Sat., " 9	Plymouth Argyle	H	1	1
Fri., " 15	Nottingham Forest	A	0	1
Sat., " 16	Fulham	A	1	4
Mon., " 18	Nottingham Forest	H		
Sat., " 23	Swansea Town	H		
Sat., " 30	Norwich City	A		
Sat., May 7	Newcastle United	H		

RESERVE FIXTURES London Combination F. A.

Sat., Aug. 28	Southend United	5	1	H	3	1
Thur., Sept. 2	Clapton Orient	0	1	A	7	0
Sat., " 4	Portsmouth	0	3	A	0	0
Wed., " 8	Clapton Orient	0	1	H	3	0
Sat., " 11	Chelsea	3	2	A	1	1
Wed., " 15	Bournemouth	1	3	A	1	1
Sat., " 18	Tottenham Hotspur	1	5	A	3	5
Wed., " 22	Leicester City	1	2	H	0	1
Sat., " 25	Queens Park Rangers	4	0	H	2	2
Mon., " 27	Leicester City	1	2	A	1	4
Sat., Oct. 2	Charlton Athletic	0	3	A	0	4
Sat., " 9	Brighton & Hove A.	1	2	H	6	3
Wed., " 13	Bristol City	1	1	A	2	3
Sat., " 16	Swansea Town	2	0	H	1	1
Sat., " 23	Crystal Palace	1	2	A	3	1
Sat., " 30	Reading	6	2	H	3	1
Sat., Nov. 6	Fulham	1	1	A	1	5
Sat., " 13	Millwall	5	3	H	5	1
Sat., " 20	Brentford	0	3	A	0	3
Sat., " 27	Arsenal	1	1	H	1	2
Sat., Dec. 4	Southampton	0	5	A	2	0
Sat., " 11	West Ham	1	2	H	0	1
Sat., " 18	Watford	3	3	A	2	3
Sat., " 25	Coventry City	1	2	A	0	1
Mon., " 27	Coventry City	0	5	H	4	0
Sat., Jan. 1	Southend United	1	1	A	0	4
Sat., " 8	Northampton Town	3	4	H	3	3
Sat., " 15	Portsmouth	1	1	H	1	2
Sat., " 22	Chelsea	1	2	A	2	6
Sat., " 29	Tottenham Hotspur	3	2	H	0	2
Sat., Feb. 5	Queens Park Rangers	1	2	A	0	4
Sat., " 19	Brighton & Hove A.	3	2	A	1	1
Sat., " 26	Swansea Town	1	0	A	1	0
Sat., Mar. 5	Crystal Palace	2	5	H	6	1
Sat., " 12	Reading	1	1	A	4	1
Sat., " 19	Fulham	4	0	H	3	0
Sat., " 26	Millwall	2	9	A	0	3
Sat., April 2	Brentford	4	2	H	0	0
Sat., " 9	Arsenal	0	10	A	0	1
Fri., " 15	Northampton Town	1	4	A	1	1
Sat., " 16	Southampton	3	1	H	2	1
Tues., " 19	Bristol City	1	1	H		
Sat., " 23	West Ham	1	6	A		
Wed., " 27	Charlton Athletic	1	1	H		
Sat., " 30	Watford	5	1	H		
Wed., May 4	Bournemouth	2	1	H		

LEAGUE TABLES

LEAGUE DIVISION II

	Pld.	Won	Lost	Drn.	For	Agst.	P.
Aston Villa	37	21	9	7	61	32	49
Sheffield United	39	20	10	9	68	53	49
Coventry City	37	19	8	10	62	39	48
Manchester United	38	19	10	9	73	48	47
Tottenham Hotspur	38	18	14	6	69	49	42
Burnley	38	16	13	10	50	46	42
Bradford	37	15	13	10	61	47	39
West Ham United	38	12	12	14	49	47	38
Bury	38	16	17	5	60	54	37
Fulham	38	13	14	11	53	52	37
Chesterfield	37	14	14	9	57	56	37
Norwich City	38	14	15	9	55	68	37
Southampton	38	13	16	9	49	67	35
Plymouth Argyle	38	11	15	12	48	62	34
Newcastle United	37	13	17	7	46	48	33
Sheffield Wednesday	37	12	16	9	44	50	33
Blackburn Rovers	37	12	16	9	65	72	33
LUTON TOWN	38	12	17	9	74	82	33
Barnsley	38	11	16	11	47	60	33
Notts Forest	38	13	19	6	42	55	32
Swansea Town	37	10	15	12	39	63	32
Stockport County	38	11	19	8	39	61	30

LONDON COMBINATION

	Pld.	Won	Lost	Drn.	For	Agst.	P.
Arsenal	42	25	3	14	107	39	64
Portsmouth	41	23	7	11	86	48	57
Coventry City	41	23	10	8	80	50	54
Queens Park Rangers	41	20	15	9	79	66	49
West Ham United	42	19	14	9	91	67	47
Chelsea	43	18	14	11	78	67	47
Watford	42	20	14	8	79	86	47
Tottenham Hotspur	40	17	12	11	80	60	45
Millwall	42	20	19	3	84	77	43
Fulham	41	16	16	10	60	67	42
Southend United	41	15	16	10	78	77	40
Charlton Athletic	41	18	19	4	70	70	40
Brentford	41	14	15	12	60	71	40
Bristol City	42	15	18	9	58	73	39
LUTON TOWN	41	14	18	9	75	73	37
Northampton	42	13	19	10	74	89	36
Clapton O.	39	15	19	5	58	71	35
Leicester City	40	13	19	8	67	75	34
Crystal Palace	40	13	19	8	72	89	34
Swansea Town	42	12	21	9	58	73	33
Bournemouth	41	12	20	9	60	87	33
Southampton	41	13	22	6	72	80	32
Reading	41	12	22	7	70	97	31
Brighton & Hove A.	43	10	22	11	67	111	31

Edward Martell

& Co., Ltd.

TELEPHONE

896-7

Coal and Coke Merchants

ESTABLISHED

1879

24, UPPER GEORGE STREET, LUTON

Burn "Hucknall" Ashless Coal

It Scores Every Time!!

Popular Price! Saves Labour!! Great Heat!!!

WHY NOT TRY IT?

CARRY ON

LUTON TOWN!

a packet of

SWEET

ROSEMARY

TOBACCO

is always enjoyable

W. & F. FAULKNER

LONDON

BRANCH OF THE IMPERIAL TOBACCO CO.
(OF GREAT BRITAIN AND IRELAND), LIMITED

Do you view

Your

Printing



WITH COMPLETE

SATISFACTION?

IF NOT, TRY

E. A. ALLEN

424, Dunstable Road, Luton

TELEPHONE 1626

RALEIGH

THE ALL-STEEL BICYCLE

When you are buying a bicycle ask yourself these questions:—

Is it individually produced in the world's largest and best equipped cycle factory?

Has it an exclusive design which ensures easiest possible running?

Is the plating and enamel extra thick to withstand the most inclement weather?

— the Raleigh is the answer to these questions. It will give you the finest possible cycle value because it is *superior even to the spokes.*

From **£5/10/-** Cash
OR EASY TERMS

Write for Catalogue

Superior
Even to the spokes



SUMMER AHEAD!

We know that it is rather early to start talking about Sports Goods for the Summer but this is just a reminder for you to inspect Partridge's Stock. Compare prices and we are confident you'll order your Sports Goods from

LUTON'S LEADING SPORTS HOUSE

A.G. Partridge & Co
PHONE 234 10-12 CHAPEL ST.
LUTON