



# LUTON TOWN FOOTBALL ·AND· ATHLETIC CO. LTD.

OFFICIAL  
JOURNAL

PRICE 2d



League—Division II

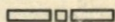
February 26th, 1938.

LUTON TOWN v. BRADFORD

**“TRUE-FORM”**  
THE FINEST FOOTWEAR  
IN THE TOWN



BUY DIRECT FROM THE MAKERS



LOCAL BRANCH:

**44, GEORGE STREET**

Head Office and Factories: NORTHAMPTON



Insist upon the  
Building Materials for  
your new house coming from

## POWDRILL'S

BUILDERS' MERCHANTS  
COAL and COKE MERCHANTS  
BRICK MANUFACTURERS  
SAND & GRAVEL QUARRY OWNERS

GEORGE POWDRILL & SON LTD., 1, 3 & 5, HITCHIN ROAD, LUTON  
TELEPHONE 2073 (2 Lines)

## CHOIR FESTIVAL

— AT —

CHAPEL STREET  
METHODIST CHURCH

TOMORROW

10.45 a.m.

6 p.m.

Rev. G. G. BARNES

Rev. Percy C. MELLOR

## GRAND CONCERT

ON WEDNESDAY, 2nd MARCH, 1938

Chairman: W. E. SAUNDERS, Esq., of Harpenden

## Luton Town Football and Athletic Co.,



LIMITED

Telephone No. 3151-2.

President: Alderman Harry Arnold, C.A., J.P.

Directors:

Chairman: Alderman Chas. Jeyes, C.C.

Messrs E. Hugh Woods, (Vice-Chairman) Frank J. Andrews, Stanley H. Godfrey, C.A.,  
Horace S. Hewson, Percival G. Mitchell, Henry Richardson, C.C., Philip W. Wright.

Team Manager: Mr. E. Liddell.

Secretary: Mr. A. E. Wickson.

Honorary Medical Officer: E. J. Crarer, M.B., Ch.B.

Honorary Solicitors: Messrs Machin & Co., 17-19, George Street West, Luton.

### CLUB NOTES by "Hatter"

I THINK my first word for today must be one of congratulation to Joe Payne, who by now (I hope) has joined the noble society of benedicts. I am sure I am voicing the wishes of all supporters, whether present this afternoon or otherwise, in wishing Joe and his wife the very best of luck and an abundance of good health in their married sphere. I do not think mentioning the "trouble" gag is opportune as yet.

Now what about last Saturday. When one reflects on the game one wonders how we came to lose by such a margin, for it can be truthfully said that we had at least two-thirds of the game. The second half was practically one continual bombardment of the "Bantams" goal, yet we only managed to piece the defence on one occasion and even that solely by the aid of a penalty. The damage was all done in the first twenty-five minutes when owing to some really brilliant football the Coventry vanguard found gaps in our defence and took full toll. In fact the score against us might easily have been doubled during this period for Joe Coen made two marvellous saves, the Coventry right winger missed a perfect "sitter" and we could not have grumbled had we had two penalties given against us. There is no doubt this defeat took away all the gloss from the victory at Bury the previous Wednesday and our boys will have to adopt different tactics and methods if they are to retain even their present position in the table.

A word of congratulation now to the "Stiffs" on gaining their point at Brighton. I have been told this game was the fastest and the hardest fight that had been seen this season. Both teams were in desperate need of points and the score reflects creditably on the play, although had the "Stiffs" had their share of the good fortune they would have returned home with the whole of the bacon. But we have to be thankful for small mercies these days.

Today we entertain the Bradford Park Avenue Club and accordingly extend to them a very hearty welcome to our town. In order to repay a compliment paid to us by the Yorkshire club when we visited them earlier in the season, supporters will see our lads in their new change strip, viz., red

and white. I wonder how many will write to me afterwards and inform me they prefer them to the real colours. Bradford will doubtless be all out to win today, for they have had rather a lean time of late and their visions of First Division football next term is becoming diminished through their recent failures. Their last three games against Sheffield Wednesday (away), Fulham (home) and Plymouth Argyle (away), have all been lost. I give here a few notes concerning our expected visitors.

**Tommy "Chick" Farr**, a much improved goalkeeper who is Bradford's only "ever-present" this season. He came from Blackburn Athletic in September, 1934, and never flinches when his goal is in danger. Height 5 ft. 10½ ins. Weight 12 stone.

**Arthur C. Ross**, has not yet fully established himself as Bradford's regular right back, as he only came into the side because of injuries to Lindley and Johnstone. On his day, however, he is a reliable defender. He formerly played with Middlesbrough and came to Park Avenue in March last year. Height 5 ft. 8½ ins. Weight 11 stone.

**Robert Johnstone**, who joined Bradford from Heart of Midlothian in May 1935, graduated to his present position at left back from outside right and right half. He is cool and calculating, but a trifle on the slow side. Height 5 ft. 9½ ins. Weight 12 stone.

**William Cringan**, right half, is the son of a famous father—Billy Cringan, the former Scottish international. He received his League baptism a week ago, at Plymouth. Only 19 years of age, a great future is predicted for him. Height 5 ft. 9½ ins. Weight 11 stone.

**Robert Danskin**, centre half—"Bob" to his "fans"—is regarded by many people as the best pivot in the Second Division. Few centre forwards get much change out of him. Not a showy player; but very effective. Has only missed one match this season. He is Bradford's captain, and has longer service at Park Avenue than any of his colleagues, having joined Bradford from Leeds United in December, 1932. Height 5 ft. 8 ins. Weight 11½ stone.



**George H. Stabb**, left half, is usually regarded as a right half, but fully justified himself at Plymouth last week when he "changed over." A man who never spares himself and a real 90 minutes player. Plays best on a heavy ground—when his great strength helps him. Height 5 ft. 7 ins. Weight 12 st. 3 lbs.

**Jabez B. Foulkes**, outside right, came to Bradford from Stockport County in May, 1936. When in form he is a great danger to opposing defenders, but has been disappointing because of his disconcerting inconsistency. Height 5 ft. 6½ ins. Weight 9½ stone.

**William Martin**, inside right, is sometimes spoken of as a second Alex James. His footwork and craft are certainly above the average, but he offers little danger near goal. On occasion, too, his lack of inches is against him, but he is a skilful little player. Joined Bradford in February, 1937. Height 5 ft. 6 ins. Weight 10 stone.

**George H. Henson**, centre forward, has 20 goals to his credit this season, including a "bag" of six against Blackburn Rovers on January 29th. Is a tireless worker with a penchant for "trailing" opposing centre halves out of position. Came from Swansea Town in June last. Height 5 ft. 11 ins. Weight 12½ stone.

**John C. Wesley**, inside left, joined Bradford from Gateshead in September, 1934. The better the opposition the better he plays, but has yet to find his shooting boots this season—his "bag" comprising only three goals. Height 5 ft. 8½ ins. Weight 11 stone.

**Thomas H. Lewis**, outside left, is always a potential match winner. This season he has scored 15 goals—not a bad record for a winger. Has been with Bradford since June, 1933, having previously played with Wrexham. Has a fine burst of speed and shoots with terrific force. Height 5 ft. 9 ins. Weight 13 stone.

*A free ticket to the Grand Stand or Enclosure for today's League II game with Bradford is awarded to Mr. S. H. Welch, 47, Chatsworth Road, Luton, who sent in the following "Interest and Humour" story with Programme No. 823 (12-2-38).*

Waiting for the Manchester Cup match to start was becoming tiring, and when a sudden gust of wind blew off a number of bandmen's hats, together with sheets of music-score on to the pitch from the Maple Road goal, a loud laugh was the result, one wisecrack shouting, "There's Music in the Air."

After collecting their "spare parts," the band came over to the Bobbers Stand and were greeted thus—"Now no more hair-raising stunts," and finally a loud voice bellowed, "Let's hope your braces are stronger than your hat bands."

**Saturday, March 5th, 1938.**

LONDON COMBINATION

**LUTON TOWN RES. v. CRYSTAL PALACE RES.**

KICK - OFF 3.15 p.m.

**USUAL PRICES OF ADMISSION**

*A free ticket to the Grand Stand or Enclosure for today's League II game with Bradford is awarded to Mr. L. Waterton, 19, North Orbital Road, Kingswood Estate, Watford, who sent in the following "Interest and Humour" story with Programme No. 1255 (12-2-38).*

Luton Town v. Manchester City

Late in the second half, Luton down 3 goals.

"Say mate, that blinking refs., late blowing his whistle for anything, ain't he."

"Yus, I'll say he is. Shouldn't be a bit surprised to hear him blow offside for that first goal yet."

*The following story was submitted by Mr. H. Brantom, of Vandyke Road, Leighton Buzzard. The Editor regrets that, in accordance with the rules of the "Interest and Humour" Competition a prize cannot be granted, but as the occasion is so appropriate, feels that it should be printed.*

**HEARD AT THE TEA SHOP.**

The day following Luton's victory at Bury, a stranger driving through Luton stopped and asked two small boys the way to Dunstable.

"Well, do you know Beech Hill?"

"No, I don't, my boy."

"Well, do you know Leagrave Road?"

"No, I don't know that, Sonny."

Smaller boy interrupting, "I say Mister, did yer know they turned Joe out agen yisterdy?"

"No, Sonny I didn't, but I'll bet he did something?"

"Yis, he did Mister, he got free!"

"Ah! that's just what I thought, you know Sonny, schoolmasters will not stand that sort of thing nowadays."

Small boy, with disgusted look, "Come on Alf, he don't know nuffing!"

**LETTER to the EDITOR**

65, Runley Road,  
Luton, Beds.

Dear Sir,

Sometimes I wonder if some people who attend football matches ever read the rules. One man told me lately a man could be off-side direct from a throw-in. Another that two backs and a goalkeeper were needed to keep a man on-side.

That rule was altered long enough ago. And again one man told me and was willing to bet on it that a goal could not be scored direct from a corner.

A few football problems on football rules would add to the interest of the programme.

Yours sincerely,

ALEX MACDONALD.

*Will see what we can do in future regarding football problems—Editor.*

LUTON TOWN FOOTBALL AND ATHLETIC Co., Ltd.

OFFICIAL JOURNAL

## PLAYERS' APPEARANCES

	League II		London Combination		F.A. Cup		Other Matches		Total	
	App.	Goals	App.	Goals	App.	Goals	App.	Goals	App.	Goals
Carte, R. ...	2		7				2		11	
Childs, C. ...			11				11		22	
Coen J. L. ...	17		14		4		1		36	
Cox, G. ...			15	9			2	2	17	11
Dawes A. G. ...	23	11			3	1			26	12
Dolman, H. W. ...	12		7				1		20	
Dreyer, G. ...	1		17				6	1	24	1
Fellowes, W. J. ...	28	1			4				32	
Ferguson, C. ...	10	4	17	9	4	3	1	1	32	16
Finlayson, J. ...	27				4				31	
Gager, H. E. ...			3				8	1	11	1
Griffiths, E. O. ...	6	1	8	3			1		15	4
Hall, L. ...			9				10	1	19	1
Hancock, E. ...	6	1	15	4			3		24	5
Hogg, F. ...	4		17	2			5		26	2
Kidd, G. I. ...			25	1					25	1
King, T. P. ...	14		10		1				25	
Lewis, J. ...			1				1		2	
Loughran, J. ...	5		20	1					25	1
Lutterloch, B. R. ...	3		29						32	
McKay, N. V. ...			4				3	2	7	2
Mackey, T. S. ...	14	2	12		3				29	2
Mayberry, S. ...			9				1		10	
Nelson, J. ...	26				4				30	
Parris, J. E. ...	5	2	7	1					12	3
Payne, J. ...	20	13	2	3	1	1			23	17
Redfern, W. J. ...	6	4	19	9					25	13
Rich, L. T. ...			14	6			4	1	18	7
Roberts, F. ...	24	9	4		4				32	9
Smith, T. S. ...	25		2		4				31	
Stephenson, G. H. ...	22	3	4		4	2			30	5
Stevens, R. F. ...	3	1	25	10			5	3	33	11
Strathie J. ...			21				6	1	27	1
Vinall, E. J. ...	16	9	1		4	2			21	11
Amateurs and Others ...			3	1			50	7	53	8

???

Do you see anything interesting or humorous during your Saturday afternoon visits to this ground? If so, enter our "Interest and Humour" Competition, for which there is a weekly prize of a free ticket to the Grand Stand or Enclosure for the following League II match for every paragraph printed.

Paragraphs must be confined to a maximum of one hundred words and should be addressed to "The Editor, Football Programme, 70-72,

Kenilworth Road, Luton," accompanied by a copy of the Match Programme for that day.

**No 2686**

**Next Match, Wednesday, March 2nd, 1938.**

LONDON MID-WEEK LEAGUE

**LUTON TOWN RESERVES v. FULHAM RESERVES**

KICK - OFF 3.15 p.m.

**ADMISSION Centre Stand 1/6**

**Stand and Enclosure 1/- Ladies and Boys 6d. :: Ground 6d. Boys 3d.**



MILTON ROAD (within 8 minutes' walk of Town Hall).—MODERN HOUSES complete with every convenience, now being erected. There are three types at prices from £575 or £30 deposit and 15/2 per week, with NO ROAD OR LEGAL CHARGES. Intending purchasers are advised to make early application to ensure a good position on this convenient and well situated estate.

£30 TOTAL DEPOSIT, NO OTHER CHARGES — EATON GARDENS ESTATE. Well built, S.D. HOUSES, between Vauxhall and Airport; cavity walls; slate damp course; kitchen and bathroom tiled; indoor sanitation. REPAYMENTS 14/9 weekly.

## SELL & MITCHELL

Auctioneers, Land and Estate Agents Surveyors and Valuers

7-9, PRINCESS STREET  
LUTON

Also 95, HIGH STREET NORTH  
DUNSTABLE

TELEPHONES 2003-4

ESTABLISHED 1879

Telephone 354

District Agents for Woolwich Equitable Building Society

TO  
LET

### To-Day's Half-Time Scores FIRST LIST

A	Birmingham v. Sunderland	.....
B	Charlton Athletic v. Brentford	.....
C	Chelsea v. Blackpool	.....
D	Grimsby T. v. Huddersfield T.	.....
E	Leeds United v. Everton	.....
F	Liverpool v. Wolverhampton	.....
G	Middlesbrough v. Derby C.	.....
H	Portsmouth v. Arsenal	.....
K	Preston v. Bolton Wand.	.....
L	Stoke C. v. Manchester C.	.....
M	West Brom v. Leicester City	.....
N	Burnley v. Plymouth A.	.....

NOTE—The Letter in the Programme corresponds with the letter on the Board—thus A 0-1 means that the first-named Club has scored 0 and their opponents 1.

MONO  BRAND  
REGD.

### SPECIALITIES

Paint and Enamel  
Manufacturers  
"Stuart" Series  
Wallpapers

OGDEN &  
CLEAVER  
Stuart Street, LUTON

TELEPHONE 580

# Alma G. Peck

BUILDER ——— CONTRACTOR ——— DECORATOR

5 and 7, WENLOCK STREET

LUTON

PHONES 1752- 3095



## Clothes for Men with a Taste for Style!

The more critical you are, the more you will be satisfied with your purchases from Blundells. Up-to-date styles...dependable qualities...supreme values, await you here. Every item of wear, from socks to hat, at the keenest of prices.

**BLUNDELL Bros.** (LUTON) LTD.  
MEN'S DEPT. 12, CHEAPSIDE, LUTON.

'WHITE'S'  
have again  
supplied  
Luton Town  
Football Club  
with their Boots  
They know  
the Best

H. WHITE (Luton) LTD.,  
Footwear Specialists,  
MANCHESTER STREET.

### To-Day's Half-Time Scores SECOND LIST

A	Bury v. Chesterfield	.....
B	Coventry City v. Swansea T.	.....
C	Manchester U. v. Blackburn R.	.....
D	Newcastle U. v. Aston Villa	.....
E	Notts Forest v. Norwich City	.....
F	Sheffield U. v. Sheffield Wed.	.....
G	Stockport C. v. Southampton	.....
H	Bournemouth v. Notts County	.....
K	Brighton & H. v. Crystal P.	.....
L	Bristol Rovers v. Gillingham	.....
M	Cardiff City v. Newport C.	.....
N	Northampton v. Watford	.....

● When passing  
through

**HARPENDEN**

pay a visit to

"The  
**MARQUIS of  
GRANBY**"

PROPRIETOR - TOM HODGSON  
(Ex-Capt., Luton Town F.C.)

FULLY LICENSED

TEA GARDENS

For the

Assurance of getting correct

Results this season

Rely exclusively on the

Best. Get what you

Expect NOW by

Selecting 'FARRBEST' every

Time you buy a Machine.

GEO. F. FARR, The "Farrbest" Hatter's Engineer  
COLLINGTON STREET, LUTON

ESTABLISHED 1909

Telephone:  
Luton 2055 (2 lines)

Telegrams:  
"Farrbest," Luton



don't get wet!  
**GET A MAC**

(OR A RAINCOAT)

from

**MARES!**

Many famous makes in stock

Charles

**MARES Limited**



George Street & Dunstable Road  
LUTON And at St. Albans

TODAY

**PALACE  
THEATRE**  
LUTON

TODAY

**EDDIE CANTOR**

— IN —

**"ALI BABA goes to TOWN"** (A)

NEXT WEEK

NEXT WEEK

Deanna Durbin in **"100 Men and a Girl"** (U)

**STICK TO BEER!**

**YOU, TOO,**  
will prefer

**J.W. GREEN'S**

J. W. GREEN LIMITED, The Brewery, LUTON

Telephone - Luton 3131

**L-M-S  
RAILWAY**

**WEST HAM UNITED**

V.

**LUTON TOWN**

Saturday, March 5th, 1938

Kick-Off 3.30 p.m.

Luton L.M.S depart - - - 1.55 p.m.

Upton Park arrive - - - 3.9 p.m.

Return train leaves Upton Park 6 p.m.

FARE 3/-

FOOTBALL  
RUGBY—HOCKEY  
BADMINTON  
GOLF—FISHING  
DARTS and  
DARTBOARDS  
a Speciality  
MINIATURE  
BILLIARD TABLES  
ROLLER SKATES  
in Great Variety

ALL INDOOR GAMES  
MONOPOLY—The New Game

SEE WINDOWS

**G. A. WILD  
AND SONS**

Sports Outfitters

14, Manchester Street, Luton  
103, High Street N., Dunstable

BOOK AT  
**BAILEY'S**  
FOR

LONDON COASTAL COACHES  
ALL INDEPENDENT SERVICES

JERSEY AIRWAYS  
LONDON THEATRES  
AND  
AMUSEMENTS

Daily Services to all  
parts of Great Britain

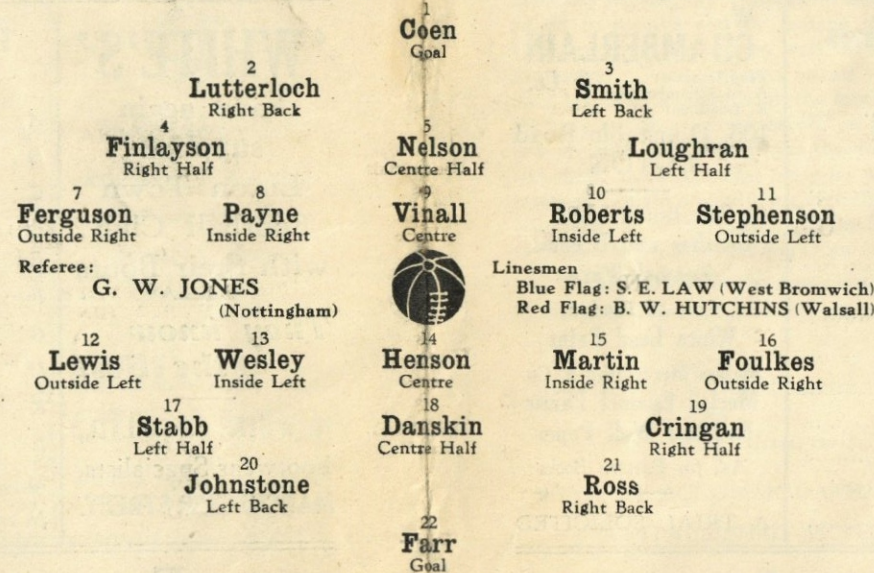
TOBACCONIST  
AND BOOKING AGENT

**38, NEW BEDFORD ROAD  
LUTON**

Phone 1972

LUTON TOWN (Red Shirts  
White Knickers)

League—Division II



BRADFORD (White Shirts with Red, Amber and Black  
Hoops across Chest, Black Knickers)

Kick-Off 3.15 p.m.

**WE'RE THERE!**

**BIRD'S**

for

BUILDING  
AND DECORATIVE  
MATERIALS

CHARLES BIRD & SONS, Limited  
Collingdon Street, LUTON

Telephone 1255

— Also —

Corrugated Iron, Wire Netting,  
Chain Link Fencing, Chestnut  
Paling, Creosote and Garden  
Sundries

**HARRY CANHAM**

Cardboard Box

Packing Case, Ply Box and

Crate Manufacturer

**9a, MARKET HILL, LUTON**

TELEPHONE 458

For a GOOD DINNER  
TEA or SUPPER

try

**J. BEDDALL**

PARTIES CATERED FOR  
SATISFACTION ASSURED

**67, LEAGRAVE ROAD  
LUTON**

A few minutes walk from the  
Football Ground

**MAD HATTER**

The Cocktail with a Kick

Per Bottle **3/6**

Per Half-Bottle **2/-**

**R. H. Marks Ltd.**

WINE AND SPIRIT MERCHANTS

69, George Street  
and at St. High Town Road

**Luton**

— There is —

**'SAFETY'** for you in investing  
your **SPARE CASH** by  
buying your **HOUSE**

through the

**LUTON & MIDLANDS  
BUILDING SOCIETY**

Telephone: Luton 1067

11, George St.  
West  
LUTON

**WEBDALE'S**

of WELLINGTON STREET

FOR

Kitchen Equipment

AND ALL

Household Requirements

AT LOWEST PRICES

21 to 27 WELLINGTON STREET  
'Phone: Luton 41  
LUTON



**Charnley**  
and Sons  
REGISTERED  
OPTICIANS

National Health  
Insurance

On the Official List of  
H.S.A. Opticians

11, Wellington Street  
LUTON  
Telephone 1808

We are offering  
GENUINE 10/6  
FOUNTAIN PENS

for  
5/6

Nibs to suit all  
OOOO

**W. F. BUNKER**  
"Fountpen Hospital"  
26a, Chapel St., Luton  
PHONE 224

**E. A. GREEN**  
BOOKSELLER  
NEWSAGENT  
STATIONER

Luton's Most  
Progressive Circulating  
Library

21a, New Bedford Road  
and 228, Biscot Road  
LUTON  
Telephone 476

**F. WHITE**

Builder  
and  
Contractor

141,  
Stockingstone Road  
LUTON



All Classes of  
Repairs, Painting and  
Decorating Under-  
taken

ESTIMATES FREE

### To-Day's Half-Time Scores

#### THIRD LIST

A	Torquay U. v. Swindon T.	.....
B	Walsall v Bristol City	.....
C	Accrington S. v Lincoln City	.....
D	Bradford City v. Darlington	.....
E	York City v Oldham Athletic	.....
	3-30 KICK-OFFS	
F	Charlton Athletic v. Brentford	.....
G	Barnsley v. West Ham	.....
H	Tottenham H. v. Fulham	.....
K	Clapton Orient v. Aldershot	.....
L	Mansfield Town v. Exeter City	.....
M	Queens Park v. Reading	.....
N	Southend United v. Millwall	.....

**W. CHAMBERLAIN**  
Proprietors—  
A. M. Chamberlain  
R. Deadman

106, Dunstable Road  
LUTON

Best British Made  
Brushes and Brooms  
Enamel Ware

City of London  
White Lead Paint

Messrs Merrediths & Co.  
Merlac Enamel Paints  
Fadeless Wall Paper

Ask for Pattern Books

A TRIAL SOLICITED

**W. HOLES**

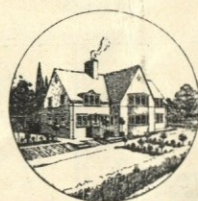
3, Gordon Street, Luton  
Coal and  
Coke Merchant

Authorised Agent for  
Luton Gas Company's  
large and graded coke



Agent for  
L.M.S. Passenger Dept.

Telephone 210



Telephone: Luton 2126.

**P. W. SMITH,**

BUILDER

HIGH CLASS DECORATOR

CONTRACTOR

418, Dunstable Road,  
Luton.



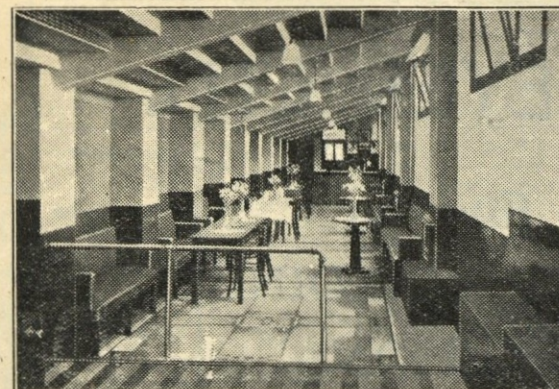
### BOBBERS STAND CLUB

President: P. W. Wright, Esq.

Hon. Secretary-Treasurer: J. Collier.

Committee: Messrs F. Cooper, F. Dean,  
A. Flitton, E. Gibbs, J. Meades, S. Setchell.

'Phone 2566.



New Lounge was playing the Top Bars. This competition took place on Tuesday, and ended as follows:—

	Top Bars	New Lounge
Skittles ...	8	5
Darts ...	7	6
Dominoes ...	4	6

which shows a very close game and exciting one to watch. We now wish to draw the attention to all our Members, that four tournaments are now being arranged for some valuable prizes for the following games—Darts, Skittles and Dominoes, also one for ladies—Dominoes. Any Member that has not entered for these games should do so at once, any one of the Committee will be pleased at any time to take your name for entry. Also any supporters who are not Members of the Bobbers, don't fail in joining at once. This would entitle you at the time of joining to complete in any of the games. Only 1/2 per year—you will not only be helping the Bobbers, but also the Luton Town Football Club.

After the great win at Bury we were very excited. We began to look for a better position in the League Table after we had played the "Godiva's," but our hopes were again diminished after last Saturday's game, we suffered a defeat we can ill afford to receive and by getting the two points Coventry put themselves well in the running for promotion. Today we have as our visitors a Club that has been a big force in the football world, and we have not an easy task before us today, but the lads are sure to go all out for the two points that are much needed. Last Saturday at Brighton, the reserves brought a point back with them which is an improvement in that quarter, today let us hope they go one better and obtain two points.

We mentioned in our notes last week, that the

*Luton's Oldest and Largest  
Restaurant*

SEATING ACCOMMODATION FOR 300

ESTABLISHED 65 YEARS

*Private Parties Catered For*

**CENTRAL  
RESTAURANT**

20-22-24, CHEAPSIDE

PHONE 172

Proprietor: S. G. Primett

**A. E.  
NICHOLLS**

Wholesale

CONFECTIONER & TOBACCONIST

CAN SUPPLY YOU WITH  
EVERYTHING YOU WANT  
FOR THE TOBACCO AND  
CONFECTIONERY TRADE  
AT LOWEST PRICES



Prompt Delivery and Civility

16, MILL STREET, LUTON

'Phone: Luton 902



# CHARLES JEYES LTD.

The Reliable Firm for  
ALL CLASSES OF BUILDINGS  
AND DECORATIONS

BUILDING SITES IN THE BEST  
PARTS OF THE TOWN

REPAIRS OF ALL KINDS A  
SPECIALITY

17a, WINDSOR STREET, LUTON

TELEPHONE 594

## Your FINAL Choice

must be the

# FORD

**PASSENGER CARS from £120**

Our Service Dept. is well  
equipped to deal with any  
problem

Call and see our range of guaranteed used cars either at our Showrooms or at the Chaul End Depot

LUTON MOTOR CO., LTD.,

BEECH HILL - DUNSTABLE ROAD - LUTON

Exclusive Ford Dealers and Wholesale Distributors for Luton, Dunstable and District

'Phone 15

## FOOTBALL LEAGUE DIVISION II

## RESULTS AT A GLANCE

	Aston Villa	Barnsley	Blackburn R.	Bradford	Burnley	Bury	Chesterfield	Coventry City	Fulham	Luton T.	Manch. U.	Newcastle U.	Norwich City	Notts Forest	Plymouth A.	Sheffield U.	Sheffield W.	Southampton	Stockport C.	Swansea T.	Tottenham H.	West Ham
Aston Villa ...	H A	+ 30 10	21 01	21 01	00 00	11 11	02 10	11 00	20 11	41 23	13 00	20 30	01 01	20 00	30 30	10 43	43 21	30 00	71 00	....	....	12 11
Barnsley ...	H A	01 03 +	35 00	01 34	22 01	22 20	00 00	....	00 00	31 04	22 14	30 10	01 01	12 00	32 21	11 36	41 21	02 00	20 21	20 01	03 11	14 01
Blackburn Rovers ...	H A	10 12	+ 53	17 00	33 00	12 03	33 03	13 00	22 11	22 14	11 00	21 21	23 01	13 00	21 22	21 33	....	40 01	10 23	31 23	02 01	21 13
Bradford ...	H A	12 43	71 00	+ 00	11 00	11 00	00 00	00 00	12 11	11 11	40 00	03 00	11 00	22 00	20 20	13 12	11 12	20 21	21 10	10 21	31 13	13 01
Burnley ...	H A	00 22	33 00	11 00	+ 00	04 00	02 00	20 01	10 12	32 00	....	22 00	....	00 00	11 32	20 11	11 00	40 00	12 00	13 04	01 00	01 00
Bury ...	H A	01 02	21 00	....	40 00	+ 00	02 21	02 20	42 02	34 10	12 01	11 01	21 01	20 01	20 12	10 12	10 10	14 50	....	00 41	12 22	05 00
Chesterfield ...	H A	01 20	30 33	....	20 00	12 02	22 04	40 22	02 11	....	17 00	....	62 12	20 10	20 11	10 01	10 01	50 10	....	41 01	22 01	00 00
Coventry City ...	H A	11 00	31 00	....	00 02	02 20	02 04	+ 00	43 00	21 41	10 22	10 21	20 12	12 00	12 04	12 12	00 00	....	02 02	81 31	11 00	00 00
Fulham ...	H A	01 00	22 21	11 21	21 24	11 20	11 20	34 00	+ 00	04 00	10 23	12 31	34 21	10 00	23 04	12 12	00 00	....	02 02	02 02	24 03	22 00
LUTON TOWN ...	H A	32 40 13	41 11	11 23	31 01	01 11	11 11	14 12	40 12	+ 00	10 24	31 00	11 00	43 23	42 00	23 04	04 10	63 33	63 33	12 01	10 10	22 01
Manchester United ...	H A	31 41	22 11	04 00	....	21 10	71 00	22 01	01 01	42 01	+ 00	30 29	32 00	43 00	43 00	00 01	10 12	12 31	31 01	51 01	01 40	....
Newcastle United ...	H A	01 03	12 00	30 12	22 11	10 11	02 02	12 00	01 21	13 03	22 03	+ 00	....	31 00	31 00	60 04	10 30	30 00	00 00	10 10	22 01	....
Norwich City ...	H A	10 10	32 00	11 03	03 00	12 01	21 00	02 12	12 01	....	23 00	....	+ 00	20 00	40 11	14 01	31 01	43 13	11 01	11 01	21 21	22 01
Notts Forest ...	H A	02 21	31 00	22 00	11 00	02 00	42 21	11 00	01 01	....	22 34	00 13	02 00	+ 00	01 00	21 12	20 24	02 00	12 21	01 01	31 03	00 00
Plymouth Argyle ...	H A	03 03	22 12	10 02	23 02	21 02	11 02	04 32	40 32	24 00	00 13	....	11 04	10 10	+ 00	20 20	11 11	50 20	20 21	22 01	23 00	....
Sheffield United ...	H A	01 11	32 00	11 02	02 01	01 00	02 01	22 01	21 00	32 40	12 13	06 00	41 00	21 12	02 00	+ 00	10 10	11 25	11 53	53 	....	20 
Sheffield Wednesday	H A	12 14	....	10 11	11 11	20 01	01 00	10 00	21 00	40 00	01 01	01 01	10 13	02 11	42 01	01 01	+ 00	00 25	00 33	11 11	03 10	10 01
Southampton ...	H A	00 03	10 04	21 02	04 00	41 01	05 00	02 00	36 33	33 30	33 30	03 03	31 34	20 00	00 00	05 00	52 00	+ 00	41 00	11 00	21 33	33 13
Stockport County ...	H A	17 02	01 12	12 01	00 00	11 00	11 00	01 00	20 21	46 13	10 00	00 00	11 00	21 10	12 02	11 00	33 14	14 00	+ 00	20 02	02 01	01 00
Swansea Town	H A	....	32 01	31 00	31 00	00 14	10 10	33 20	18 10	11 11	15 01	01 11	11 12	10 10	10 35	11 11	11 00	11 11	02 02	+ 00	02 10	00 00
Tottenham Hotspur ...	H A	21 30	31 13	13 10	40 13	22 10	13 00	00 00	30 42	30 42	01 10	22 10	12 13	30 32	30 32	....	30 01	12 23	20 20	20 20	21 00	20 00
West Ham ...	H A	11 41	20 31	10 12	11 34	50 34	50 00	00 00	01 11	22 04	04 00	10 33	22 00	00 00	....	02 10	10 01	31 33	10 00	21 00	02 00	+ 



## FIXTURES 1937-8

## FIRST XI Division II

F. A.

Sat., Aug. 28	Stockport County	...	A	1	2
Wed., Sept. 1	Aston Villa	...	H	3	2
Sat., " 4	Manchester United	...	H	1	0
Mon., " 6	Aston Villa	...	A	1	4
Sat., " 11	Sheffield United	...	A	0	2
Wed., " 15	Newcastle United	...	A	3	1
Sat., " 18	Tottenham Hotspur	...	H	2	4
Sat., " 25	Burnley	...	A	2	3
Sat., Oct. 2	Bury	...	H	0	1
Sat., " 9	Coventry City	...	A	1	2
Sat., " 16	Bradford	...	A	1	1
Sat., " 23	West Ham United	...	H	2	2
Sat., " 30	Southampton	...	A	6	3
Sat., Nov. 6	Blackburn Rovers	...	H	4	1
Sat., " 13	Sheffield Wednesday	...	A	0	4
Sat., " 20	Chesterfield	...	H	1	1
Sat., " 27	Plymouth Argyle	...	A	4	2
Sat., Dec. 4	Fulham	...	H	4	0
Sat., " 11	Swansea Town	...	A	1	1
Sat., " 18	Norwich City	...	H	1	1
Sat., " 25	Barnsley	...	H	4	0
Mon., " 27	Barnsley	...	A	1	3
Sat., Jan. 1	Stockport County	...	H	6	4
Sat., " 8	Scarborough (F.A. Cup)	...	A	1	1
Wed., " 12	Scarborough (F.A. Cup Replay)	...	H	5	1
Sat., " 15	Manchester United	...	A	2	4
Sat., " 22	Swindon Town (F.A. Cup)	...	H	2	1
Sat., " 29	Tottenham Hotspur	...	A	0	3
Wed., Feb. 2	Sheffield United	...	H	2	3
Sat., " 5	Burnley	...	H	3	1
Sat., " 12	Manchester City (F.A. Cup)	...	H	1	3
Wed., " 16	Bury	...	A	4	3
Sat., " 19	Coventry City	...	H	1	4
Sat., " 26	Bradford	...	H		
Sat., Mar. 5	West Ham United	...	A		
Sat., " 12	Southampton	...	H		
Sat., " 19	Blackburn Rovers	...	A		
Sat., " 26	Sheffield Wednesday	...	H		
Sat., April 2	Chesterfield	...	A		
Sat., " 9	Plymouth Argyle	...	H		
Fri., " 15	Nottingham Forest	...	A		
Sat., " 16	Fulham	...	A		
Mon., " 18	Nottingham Forest	...	H		
Sat., " 23	Swansea Town	...	H		
Sat., " 30	Norwich City	...	A		
Sat., May 7	Newcastle United	...	H		

## RESERVE FIXTURES London Combination F. A.

Sat., Aug. 28	Southend United	...	5	1	H	3	1
Thur., Sept. 2	Clapton Orient	...	0	1	A	7	0
Sat., " 4	Portsmouth	...	0	3	A	0	0
Wed., " 8	Clapton Orient	...	0	1	H	3	0
Sat., " 11	Chelsea	...	3	2	H	1	1
Wed., " 15	Bournemouth	...	1	3	A	1	5
Sat., " 18	Tottenham Hotspur	...	1	5	A	3	1
Wed., " 22	Leicester City	...	1	2	H	0	1
Sat., " 25	Queens Park Rangers	...	4	0	H	2	2
Mon., " 27	Leicester City	...	1	2	A	1	4
Sat., Oct. 2	Charlton Athletic	...	0	3	A	0	4
Sat., " 9	Brighton & Hove A.	...	1	2	H	6	2
Wed., " 13	Bristol City	...	1	1	A	2	3
Sat., " 16	Swansea Town	...	2	0	H	1	1
Sat., " 23	Crystal Palace	...	1	2	A	3	1
Sat., " 30	Reading	...	6	2	H	3	1
Sat., Nov. 6	Fulham	...	1	1	A	1	5
Sat., " 13	Millwall	...	5	3	H	5	1
Sat., " 20	Brentford	...	0	3	A	0	3
Sat., " 27	Arsenal	...	1	1	H	1	2
Sat., Dec. 4	Southampton	...	0	5	A	2	0
Sat., " 11	West Ham	...	1	2	H	0	1
Sat., " 18	Watford	...	3	3	A	2	3
Sat., " 25	Coventry City	...	1	2	A	0	1
Mon., " 27	Coventry City	...	0	5	H	4	0
Sat., Jan. 1	Southend United	...	1	1	A	0	4
Sat., " 8	Northampton Town	...	3	4	H	3	3
Sat., " 15	Portsmouth	...	1	1	H	1	2
Sat., " 22	Chelsea	...	1	2	A	2	6
Sat., " 29	Tottenham Hotspur	...	3	2	H	0	2
Sat., Feb. 5	Queens Park Rangers	...	1	2	A	0	4
Sat., " 19	Brighton & Hove A.	...	3	2	A	1	1
Sat., " 26	Swansea Town	...	1	0	A		
Sat., Mar. 5	Crystal Palace	...	2	5	H		
Sat., " 12	Reading	...	1	1	A		
Sat., " 19	Fulham	...	4	0	H		
Sat., " 26	Millwall	...	2	9	A		
Sat., April 2	Brentford	...	4	2	H		
Sat., " 9	Arsenal	...	0	10	A		
Fri., " 15	Northampton Town	...	1	4	A		
Sat., " 16	Southampton	...	3	1	H		
Tues., " 19	Bristol City	...	1	1	H		
Sat., " 23	West Ham	...	1	6	A		
Wed., " 27	Charlton Athletic	...	1	1	H		
Sat., " 30	Watford	...	5	1	H		
Wed., May 4	Bournemouth	...	2	1	H		

## LEAGUE TABLES

## LEAGUE DIVISION II

	Pld.	Won	Lost	Drn.	For	Agst.	P.
Aston Villa	29	16	6	6	52	24	40
Sheffield United	30	18	8	4	59	41	40
Coventry City	29	14	6	9	45	33	37
Manchester United	29	15	8	6	60	38	36
Tottenham Hotspur	29	14	11	4	52	37	32
Bradford	28	11	8	10	44	32	31
West Ham United	29	10	8	11	40	35	31
Burnley	29	11	10	9	40	40	31
Chesterfield	28	11	9	8	48	39	30
Bury	29	12	12	5	42	40	29
LUTON TOWN	29	11	13	5	61	62	27
Norwich City	29	10	12	7	47	56	27
Southampton	29	10	12	7	41	57	27
Newcastle United	27	10	11	6	35	34	26
Sheffield Wednesday	29	9	12	8	33	39	26
Blackburn Rovers	29	9	13	7	50	61	25
Barnsley	30	9	14	7	42	54	25
Fulham	29	8	13	8	40	47	24
Notts Forest	29	9	14	6	33	41	24
Swansea Town	29	7	12	10	31	50	24
Stockport County	28	8	13	7	31	46	23
Plymouth Argyle	29	7	15	7	34	54	21

## LONDON COMBINATION

	Pld.	Won	Lost	Drn.	For	Agst.	P.
Arsenal	31	18	3	10	85	34	46
Coventry City	31	18	8	5	62	41	41
West Ham United	33	17	10	6	71	44	40
Portsmouth	32	15	7	10	60	42	40
Fulham	33	16	9	8	53	47	40
Watford	33	16	10	7	65	70	38
Queens Park Rangers	31	15	9	7	69	51	37
Charlton Athletic	31	16	12	3	62	53	35
Tottenham Hotspur	33	12	9	10	61	46	34
Millwall	33	16	15	2	97	65	34
Chelsea	32	12	11	9	60	53	33
Crystal Palace	33	13	13	7	65	68	33
Northampton	35	11	17	7	60	76	29
Southend United	31	10	12	8	55	54	28
Clapton O.	28	12	12	4	46	50	28
Bristol City	33	10	15	8	49	62	28
Brentford	31	10	14	7	43	61	27
Leicester City	30	10	15	5	55	61	25
LUTON TOWN	32	9	16	7	58	65	25
Swansea Town	32	8	15	9	41	59	25
Reading	32	10	17	5	58	74	25
Southampton	32	9	17	6	59	64	24
Bournemouth	31	9	16	6	44	70	24
Brighton & Hove A.	32	7	16	9	49	87	23

# Edward Martell

## & Co., Ltd.

TELEPHONE  
896-7

Coal and Coke Merchants

ESTABLISHED  
1879

24, UPPER GEORGE STREET, LUTON

## Burn "Hucknall" Ashless Coal

### It Scores Every Time!!

Popular Price! Saves Labour!! Great Heat!!!

WHY NOT TRY IT?

## CARRY ON LUTON TOWN!

a packet of  
**ROSEMARY**  
TOBACCO  
is always enjoyable

W. & F. FAULKNER  
LONDON

BRANCH OF THE IMPERIAL TOBACCO CO.  
(OF GREAT BRITAIN AND IRELAND), LIMITED

## For PRINTING

## THAT SATISFIES

both for  
Price and Quality



E. A. ALLEN  
424, Dunstable Road, Luton

TELEPHONE 1626



# RALEIGH

## THE ALL-STEEL BICYCLE

When you are buying a bicycle ask yourself these questions:—

Is it individually produced in the world's largest and best equipped cycle factory?

Has it an exclusive design which ensures easiest possible running?

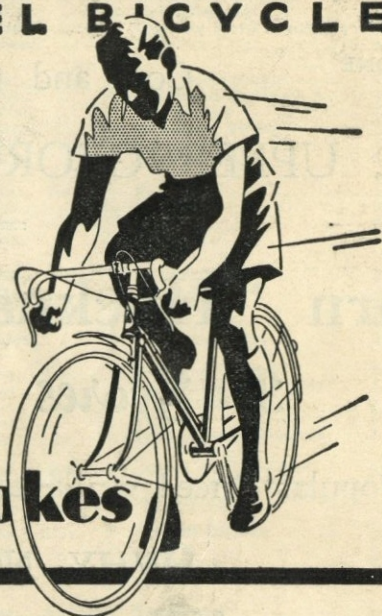
Is the plating and enamel extra thick to withstand the most inclement weather?

— the Raleigh is the answer to these questions. It will give you the finest possible cycle value because it is superior even to the spokes.

From **£5/10/-** Cash  
OR EASY TERMS

*Write for Catalogue*

**Superior**  
**Even to the spokes**



## EASTER AHEAD!

We know that with this cold weather it is rather early to start talking about Sports Goods for the Summer but this is just a reminder for you to inspect Partridge's Stock. Compare prices and we are confident you'll order your Sports Goods from

**LUTON'S LEADING SPORTS HOUSE**

*A. G. Partridge & Co*  
PHONE 234 10-12 CHAPEL ST. LUTON