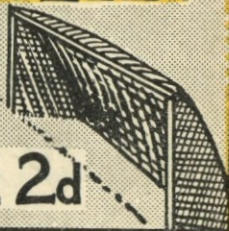




# LUTON TOWN FOOTBALL AND ATHLETIC CO. LTD.

OFFICIAL  
JOURNAL

PRICE 2d



League—Division II

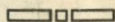
February 5th, 1938.

LUTON TOWN v. BURNLEY

**“TRUE FORM”**  
THE FINEST FOOTWEAR  
IN THE TOWN



BUY DIRECT FROM THE MAKERS



LOCAL BRANCH:

**44, GEORGE STREET**

Head Office and Factories: NORTHAMPTON



Insist upon the  
Building Materials for  
your new house coming from

## POWDRILL'S

BUILDERS' MERCHANTS  
COAL and COKE MERCHANTS  
BRICK MANUFACTURERS  
SAND & GRAVEL QUARRY OWNERS

GEORGE POWDRILL & SON LTD., 1, 3 & 5, HITCHIN ROAD, LUTON  
TELEPHONE 2073 (2 Lines)

# MAKE YOUR GOAL

CHAPEL STREET  
METHODIST CHURCH

TOMORROW

10.45 a.m.

6 p.m.

Rev. Geo. HOPPER

Rev. Percy C. MELLOR



Sunday & Monday, 20th & 21st February

REV. LESLIE CHURCH, B.A., Ph.D.

Luton  
Football and



Town  
Athletic Co.,

LIMITED

Telephone No. 3151-2.

President: Alderman Harry Arnold, C.A., J.P.

Directors:

Chairman: Alderman Chas. Jeyes, C.C.

Messrs E. Hugh Woods, (Vice-Chairman) Frank J. Andrews, Stanley H. Godfrey, C.A.,  
Horace S. Hewson, Percival G. Mitchell, Henry Richardson, C.C., Philip W. Wright.

Team Manager: Mr. E. Liddell.

Secretary: Mr. A. E. Wickson.

Honorary Medical Officer: E. J. Crarer, M.B., Ch.B.

Honorary Solicitors: Messrs Machin & Co., 17-19, George Street West, Luton.

WHAT a tragedy the result of our match with Sheffield United was on Wednesday last. Instead of losing by the odd goal in five we should have finished with a comfortable margin on the right side. But the fates, along with missed chances, decreed otherwise. This result however makes it more imperative than ever that two points shall be gained this afternoon and Burnley is no easy nut to crack. True when we played at Turf Moor earlier in the season we were rather unfortunate to lose; since then the Lancashire Club has greatly improved and have an outside chance of gaining honours. Their team includes a fine blend of youth and experience as the following pen pictures will testify.

**E. F. Adams**, the goalkeeper, was without a club when Burnley signed him just two years ago, and he has proved a great "find." Since playing in the League team at Villa Park on January 9th last year, he has missed only three games.

**Alick Robinson**, right back and captain, has been with Burnley about five years. Came from Bury as a left half back, and has twice played for the Football League—against the Irish League at Belfast in September 1934 and against Wales and Ireland at Goodison Park on May 11th, 1935. Tried at right back in the three closing matches of last season, and has played splendidly. A whole-hearted player who enjoys his football.

**Tom Chester** is another former Bury player and joined Burnley in March last year. After several appearances was injured at Norwich last Easter Saturday, but has kept his position since regaining it at the beginning of October. He excels in positional play.

**Leonard Martindale**. At right-half is 17 years old Leonard Martindale, a Bolton boy who was at the same school as Tom Lawton, now of Everton. Has been very successful since coming into the team last October, and has only been absent once. Martindale promises a great future.

**Arthur Woodruff** is one of Burnley's best free transfer captures. He was not retained by Bradford City at the end of 1935-36, and Burnley got him for nothing. He attracted the attention of many clubs last season, but lost his place to Johnson, only to regain it a fortnight ago. As a defensive centre-half is difficult to beat.

**W. S. Smith** is the most improved player in the team, who plays the whole 90 minutes. Is a real terrier sort of left half, and never admits defeat. Came to Burnley from Crystal Palace, and previously was with Sheffield Wednesday.

**"Jimmy" Stein** is the former Everton player, who came to Burnley with Miller in October, 1937. Has played in both wing positions for Burnley with success and makes his head save his legs. Won F.A. Cup medal with Everton and possesses First and Second Division championship medals.

**William Rennie Miller**, one of the cleverest and most brilliant inside rights in the game. Is playing better than ever before and when on top form is a sheer delight to watch. Was with Partick Thistle before joining Everton, has toured Canada with the Scottish F.A. and played against the English League.

**Robson** is the former Stoke City centre forward, and played his first game for Burnley on December 11th, last. Was doing well until injured on Christmas Day, but since returning to the team in the re-played Cup Tie against Sheffield Wednesday has not been in his best form.

**Robert Edward Brocklebank** is a fine footballer, whose clever work is done quietly. Specialises in creating openings, and has been one of Burnley's key men. Has not had the best of luck with his shooting. Was with Aston Villa eight seasons before coming to Burnley two years ago. He is the club's only ever-present this season.

**"Ronnie" Hornby**, keen and resourceful, has settled down at outside left after being recognised as an inside forward. With Brocklebank has made a strong wing. Is clever on the ball and fearless. Formerly with Rochdale.

Finally a word about next Saturday, and mainly about **admission** to the **enclosure**; i.e. standing on the terrace in front of the Grand Stand. Admission to this part of the ground will be by **ticket only** and no cash will be taken at the turnstiles, on the day. **Patrons** who are intending to use this portion of the ground, **are therefore strongly advised to obtain their tickets now**. Do not leave it until the end of the week, for only a **limited number of tickets will be issued**.



# ATTENDANCE BAROMETER

		1936		1937		1938		1939	
		£	s.	d.	£	s.	d.	£	s.
Aug. 29	Aug. 28	Southend United Reserves ...	...	...	7346	167	0	3	
Aug. 31		Southend United ...	...	...	14353	705	11	1	
		Southend United Reserves ...	...	...	3469	89	11	9	
	Sept. 1	Aston Villa ...	...	...	25349	1299	14	4	
Sept. 5	Sept. 4	Manchester United ...	...	...	20610	994	1	2	
Sept. 7		Portsmouth Reserves ...	...	...	6048	161	8	11	
		Walsall ...	...	...	11043	486	8	0	
	Sept. 8	Clapton Orient Reserves ...	...	...	4823	93	6	7	
	Sept. 11	Chelsea Reserves ...	...	...	7725	175	7	7	
Sept. 12		Crystal Palace ...	...	...	13790	707	18	3	
	Sept. 18	Tottenham Hotspur ...	...	...	23788	1235	7	8	
Sept. 19		Tottenham Hotspur Reserves ...	...	...	5659	150	14	11	
Sept. 21		Leicester City Reserves ...	...	...	1585	39	18	11	
	Sept. 22	Leicester City Reserves ...	...	...	3626	69	19	2	
	Sept. 25	Queens Park Rangers Reserves ...	...	...	6558	142	1	11	
Sept. 26		Reading ...	...	...	16378	820	18	0	
	Oct. 2	Bury ...	...	...	17650	821	19	0	
Oct. 3		Queens Park Rangers Reserves ...	...	...	3558	91	13	10	
	Oct. 9	Brighton and Hove Reserves ...	...	...	5236	107	4	10	
Oct. 10		Bristol City ...	...	...	13255	629	1	7	
Oct. 17	Oct. 16	Swansea Town Reserves ...	...	...	6592	141	16	2	
		Watford ...	...	...	20569	1071	17	1	
Oct. 24	Oct. 23	West Ham United ...	...	...	17757	897	18	10	
		Southampton Reserves ...	...	...	4120	107	15	2	
Oct 31.	Oct. 30	Reading Reserves ...	...	...	5571	116	1	10	
		Bournemouth ...	...	...	11305	591	16	2	
Nov. 7	Nov. 6	Blackburn Rovers ...	...	...	16776	818	16	6	
		Fulham Reserves ...	...	...	3080	80	12	3	
Nov. 14	Nov. 13	Millwall Reserves ...	...	...	6929	149	18	5	
		Bristol Rovers ...	...	...	12784	599	6	4	
Nov. 21	Nov. 20	Chesterfield ...	...	...	17088	802	11	10	
		Millwall Reserves ...	...	...	3223	83	3	0	
	Nov. 27	Arsenal Reserves ...	...	...	7116	158	2	0	
Dec. 5	Dec. 4	Fulham ...	...	...	13529	653	13	6	
		Northampton Reserves ...	...	...	3452	90	4	1	
	Dec. 11	West Ham United Reserves ...	...	...	5487	114	16	2	
Dec. 19	Dec. 18	Norwich City ...	...	...	14492	680	2	6	
		Brighton & Hove Reserves ...	...	...	2935	77	1	4	
Dec. 25	Dec. 25	Barnsley ...	...	...	15829	756	3	8	
Dec. 26		Notts County ...	...	...	17308	889	5	6	
		Reading Reserves ...	...	...	4102	112	6	9	
Dec. 28	Dec. 27	Coventry City Reserves ...	...	...	9178	223	9	9	
1937	1938	Clapton Orient Reserves ...	...	...	1808	46	16	1	
Jan. 1	Jan. 1	Stockport County ...	...	...	14138	644	7	8	
		Cardiff City ...	...	...	12093	568	2	4	
Jan. 9	Jan. 8	Northampton Town Reserves ...	...	...	6672	148	19	9	
		Charlton Athletic Reserves ...	...	...	3382	88	3	5	
Jan. 23	Jan. 15	Portsmouth Reserves ...	...	...	4941	101	0	8	
		Exeter City ...	...	...	10003	476	5	4	
Feb. 1	Jan. 29	Tottenham Hotspur Reserves ...	...	...	4814	96	19	1	
		Chelsea Reserves ...	...	...	659	16	9	8	
	Feb. 2	Sheffield United ...	...	...	8414	378	17	8	
			...	...	199961	8782	9	9	
			...	...	298034	11987	6	6	

N.B. The attendance figures for both League II and London Combination matches, include the number of Season Tickets issued. The gate receipts are the net amounts received after Entertainment Tax has been deducted. The attendance figures for the London Combination matches in Season 1936-7 do NOT include the number of Season Tickets issued.

???

Do you see anything interesting or humorous during your Saturday afternoon visits to this ground? If so, enter our "Interest and Humour" Competition, for which there is a weekly prize of a free ticket to the Grand Stand or Enclosure for the following League II match for every paragraph printed.

Paragraphs must be confined to a maximum of one hundred words and should be addressed to "The Editor, Football Programme, 70-72,

Kenilworth Road, Luton," accompanied by a copy of the Match Programme for that day.

No 955

## PLAYERS' APPEARANCES

	League II		London Combination		F.A. Cup		Other Matches		Total	
	App.	Goals	App.	Goals	App.	Goals	App.	Goals	App.	Goals
Carte, R. ...	...	...	7						7	
Childs, C. ...	...	...	11						11	
Coen J. L. ...	...	...	14		3		1		15	
Cox, G. ...	...	...	13	9			1		14	9
Dawes A. G. ...	...	...	21	11	3	1			24	12
Dolman, H. W. ...	...	...	12						19	1
Dreyer, G. ...	...	...	1				6	1	22	1
Fellowes, W. J. ...	...	...	25	1	3				28	
Ferguson, C. ...	...	...	7	4	3	3	1	1	28	16
Finlayson, J. ...	...	...	24		3				27	
Gager, H. E. ...	...	...	3				5		8	
Griffiths, E. O. ...	...	...	6	1			1		15	4
Hall, L. ...	...	...	9				6	1	15	1
Hancock, E. ...	...	...	6	1			2		22	5
Hogg, F. ...	...	...	4				4		23	1
Kidd, G. I. ...	...	...	24						24	1
King, T. P. ...	...	...	14						23	
Loughran, J. ...	...	...	5						23	1
Lutterloch, B. R. ...	...	...	1						29	
McKay, N. V. ...	...	...	4				2	2	6	2
Mackey, T. S. ...	...	...	13		3				28	
Mayberry, S. ...	...	...	7						7	
Nelson, J. ...	...	...	23		3				26	
Parris, J. E. ...	...	...	5	2	7	1			12	3
Payne, J. ...	...	...	17	9	2	3			19	12
Redfern, W. J. ...	...	...	4	3	18	9			22	12
Rich, L. T. ...	...	...	13	6			1		14	6
Roberts, F. ...	...	...	22	9	4				29	9
Smith, T. S. ...	...	...	24		1				28	
Stephenson, G. H. ...	...	...	19	2	4		3	2	26	4
Stevens, R. F. ...	...	...	3	1	23	10			30	11
Strathie J. ...	...	...	20				2		22	
Vinall, E. J. ...	...	...	16	9					19	11
Amateurs and Others ...	...	...	3	1			34	2	37	3

### F.A. CUP—ROUND 5

SATURDAY, FEBRUARY 12th, 1938

## LUTON TOWN v. MANCHESTER CITY

KICK - OFF 3 p.m.

PRICES OF ADMISSION—Ticket Entrances

GRAND STAND, CENTRE STAND - 7/6

(These tickets, until 5th February, are only obtainable by Centre Stand Season Ticket Holders. After that date any tickets not claimed will be available to the General Public.)

GRAND STAND, OTHER BAYS - 5/-

(All tickets in this position have been over applied for and no further applications can be entertained.)

## GRAND STAND ENCLOSURE 3/-

Admission by Ticket only.

No Cash will be taken at the Turnstiles.

Non-Ticket Entrances

GROUND - 2/- BOYS - 1/-

All Prices include Entertainment Tax

Tickets are obtainable at the Registered Office, 70-72, Kenilworth Road, Luton. All applications by post must be accompanied by remittance and stamped addressed envelope.



**SELL & MITCHELL**

*Auctioneers, Land and Estate Agents  
Surveyors and Valuers*

7-9, PRINCESS STREET  
LUTON

TELEPHONES 2003-4

Also 95, HIGH STREET NORTH  
DUNSTABLE

Telephone 354

*District Agents for Woolwich Equitable Building Society*

ESTABLISHED 1879

**TO  
LET**

**To-Day's Half-Time Scores  
FIRST LIST**

A	Arsenal v. Derby County	.....
B	Birmingham v. Preston N. E.	.....
C	Blackpool v. Sunderland	.....
D	Bolton W. v. Wolverhampton	.....
E	Brentford v. Leicester City	.....
F	Huddersfield T. v. Everton	.....
G	Liverpool v. Leeds United	.....
H	Manchester C. v. Portsmouth	.....
K	Middlesbrough v. Charlton A.	.....
L	Stoke City v. Chelsea	.....
M	West Brom v. Grimsby Town	.....
N	Barnsley v. Tottenham H.	.....

NOTE—The Letter in the Programme corresponds with the letter on the Board—thus A 0-1 means that the first-named Club has scored 0 and their opponents 1.

MONO  BRAND  
REGD.

**SPECIALITIES**

Paint and Enamel  
Manufacturers  
"Stuart" Series  
Wallpapers

**OGDEN &  
CLEAVER**

Stuart Street, LUTON

TELEPHONE 580

**Alma G. Peck**

**BUILDER — CONTRACTOR — DECORATOR**

5 and 7, WENLOCK STREET

**LUTON**

PHONES 1752- 3095



**Clothes for Men with  
a Taste for Style!**

The more critical you are, the more you will be satisfied with your purchases from Blundells. Up-to-date styles... dependable qualities... supreme values, await you here. Every item of wear, from socks to hat, at the keenest of prices.

**BLUNDELL Bros.** (LUTON) LTD.  
MEN'S DEPT. 12, CHEAPSIDE, LUTON.

**'WHITE'S'**  
have again  
supplied  
Luton Town  
Football Club  
with their Boots

*They know  
the Best*

**H. WHITE (Luton) LTD.,**  
Footwear Specialists,  
MANCHESTER STREET.

**To-Day's Half-Time Scores  
SECOND LIST**

A	Blackburn R. v. West Ham U.	.....
B	Chesterfield v. Swansea T.	.....
C	Fulham v. Aston Villa	.....
D	Newcastle United v. Bury	.....
E	Notts Forest v. Coventry City	.....
F	Plymouth Argyle v. Norwich C.	.....
G	Sheffield Wed. v. Bradford	.....
H	Southampton v. Manchester U.	.....
K	Stockport C. v. Sheffield U.	.....
L	Aldershot v. Watford	.....
M	Bristol Rovers v. Southend U.	.....
N	Cardiff City v. Bournemouth	.....

● When passing  
through

**HARPENDEN**

pay a visit to

**"The  
MARQUIS of  
GRANBY"**

PROPRIETOR - TOM HODGSON  
(Ex-Capt., Luton Town F.C.)

FULLY LICENSED

TEA GARDENS

For the

**Assurance of getting correct  
Results this season**

**Rely exclusively on the**

**Best. Get what you**

**Expect NOW by**

**Selecting 'FARRBEST' every**

**Time you buy a Machine.**

**GEO. F. FARR, The "Farrbest" Hatter's Engineer**  
COLLINGTON STREET, LUTON

ESTABLISHED 1909

Telephone:  
Luton 2055 (2 lines)

Telegrams:  
"Farrbest," Luton



don't get wet!  
**GET A MAC**

(OR A RAINCOAT)

from

**MARES!**

Many famous makes in stock

Charles

**MARES Limited**



George Street & Dunstable Road  
LUTON And at St. Albans

TODAY

**PALACE  
THEATRE**  
LUTON

TODAY

SONJA  
HENIE

TYRONE  
POWER

— IN —

**"LOVELY TO LOOK AT"**

NEXT WEEK

Irene Dunne and  
Randolph Scott

NEXT WEEK

**'High, Wide and Handsome'**

(U)

(U)

**J.W. GREEN'S**  
**No. 1 STRONG ALE**

WINTER BREW — WINNER, TOO!

Ask for a "LITTLE JOHN" per 6d. nip

**beer is best**

J. W. GREEN LIMITED, The Brewery, LUTON

Telephone - Luton 3131

**L-M-S**  
**RAILWAY**

TONIGHT

**SPECIAL EXCURSION**

From Luton **1/6** Return Fare

**HARRINGAY ARENA**

for the **ICE HOCKEY MATCH**

**GREYHOUNDS v. TIGERS**

Departure Times—

Luton	...	...	5.31 p.m.
Harringay Park arr.	...	...	6.43 p.m.
Return train leaves Harringay P'k 10.50 p.m.			
Passengers travel by ordinary service to Harpenden to connect with excursion			

FOOTBALL  
RUGBY—HOCKEY  
BADMINTON  
GOLF—FISHING  
DARTS and  
DARTBOARDS  
a Speciality  
MINIATURE  
BILLIARD TABLES  
ROLLER SKATES  
in Great Variety

ALL INDOOR GAMES  
MONOPOLY—The New Game

SEE WINDOWS

**G. A. WILD**  
AND SONS

Sports Outfitters

14, Manchester Street, Luton  
103, High Street N., Dunstable

BOOK AT  
**BAILEY'S**

FOR

LONDON COASTAL COACHES  
ALL INDEPENDENT SERVICES

JERSEY AIRWAYS  
LONDON THEATRES  
AND  
AMUSEMENTS

Daily Services to all  
parts of Great Britain

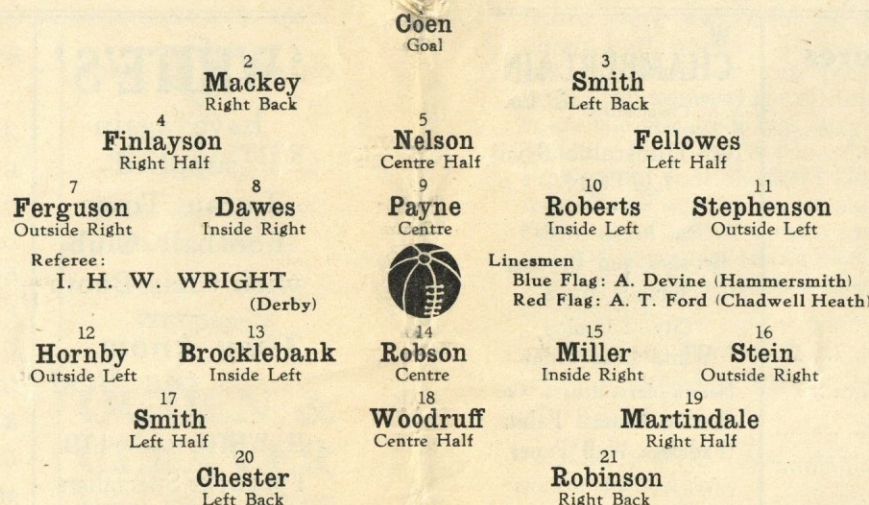
TOBACCONIST  
AND BOOKING AGENT

38, NEW BEDFORD ROAD  
LUTON

Phone 1972

LUTON TOWN (White Shirts  
Black Knickers)

League—Division II



BURNLEY (Claret and Light Blue Shirts  
White Knickers)

Kick-Off 3.15 p.m.

WE'RE THERE!

**BIRD'S**

for

BUILDING  
AND DECORATIVE  
MATERIALS

CHARLES BIRD & SONS, Limited  
Collingdon Street, LUTON

Telephone 1255

— Also —

Corrugated Iron, Wire Netting,  
Chain Link Fencing, Chestnut  
Paling, Creosote and Garden  
Sundries

**HARRY CANHAM**

Cardboard Box

Packing Case, Ply Box and

Crate Manufacturer

9a, MARKET HILL, LUTON

TELEPHONE 458

For a GOOD DINNER  
TEA or SUPPER

try

**J. BEDDALL**

PARTIES CATERED FOR  
SATISFACTION ASSURED

67, LEAGRAVE ROAD  
LUTON

A few minutes walk from the  
Football Ground

**WINES AND SPIRITS**

**R. H. Marks Ltd.**

69, George Street  
and at 81, High Town Road

Luton

AGENTS FOR

**MANN, CROSSMAN & PAULIN LTD.**  
BEERS and STOUTS

If you mean to  
**Buy Your Own House**  
do not hesitate to  
**"KICK-OFF"**

Full details of attractive terms from—

**LUTON & MIDLANDS  
BUILDING SOCIETY**

Telephone: Luton 1067

11, George St.  
West  
LUTON

**WEBDALE'S**  
of WELLINGTON STREET

FOR

Kitchen Equipment

AND ALL

Household Requirements

AT LOWEST PRICES

21 to 27 WELLINGTON STREET  
'Phone: Luton 41 LUTON



**Charnley**  
and Sons  
REGISTERED  
OPTICIANS

National Health  
Insurance

On the Official List of  
H.S.A. Opticians

11, Wellington Street  
LUTON  
Telephone 1808

We are offering  
GENUINE 10/6  
FOUNTAIN PENS

for  
**5/6**

Nibs to suit all  
○○○○○

**W. F. BUNKER**  
"Fountpen Hospital"  
26a, Chapel St., Luton  
PHONE 224

**E. A. GREEN**  
BOOKSELLER  
NEWSAGENT  
STATIONER

Luton's Most  
Progressive Circulating  
Library

21a, New Bedford Road  
and 228, Biscot Road  
LUTON  
Telephone 476

**F. WHITE**

Builder  
and  
Contractor  
141,  
Stockingstone Road  
LUTON

★  
All Classes of  
Repairs, Painting and  
Decorating Under-  
taken  
ESTIMATES FREE

**To-Day's Half-Time Scores  
THIRD LIST**

A	Crystal Palace v. Notts County	.....
B	Exeter City v. Torquay United	.....
C	Mansfield T. v. Clapton Orient	.....
D	Millwall v. Bristol City	.....
E	Northampton v. Queens P. R.	.....
F	Reading v. Newport County	.....
G	Swindon Town v. Gillingham	.....
H	Walsall v. Brighton & Hove	.....
K	Barrow v. Port Vale	.....
L	Bradford C. v. Accrington S.	.....
M	Crewe Alexandra v. Rochdale	.....
N	Hartlepool v. Oldham A.	.....

**W. CHAMBERLAIN & Co.**  
Proprietors—  
A. M. Chamberlain  
R. Deadman  
106, Dunstable Road  
LUTON

Best British Made  
Brushes and Brooms  
Enamel Ware  
City of London  
White Lead Paint  
Messrs Merrediths & Co.  
Merlac Enamel Paints  
Fadeless Wall Paper  
Ask for Pattern Books  
A TRIAL SOLICITED

**W. HOLES**

3, Gordon Street, Luton  
Coal and  
Coke Merchant

Authorized Agent for  
Luton Gas Company's  
large and graded coke

Agent for  
L.M.S. Passenger Dept.

Telephone 210



Telephone: Luton 2126.

**P. W. SMITH,**  
BUILDER

HIGH CLASS DECORATOR  
CONTRACTOR

418, Dunstable Road,  
Luton.



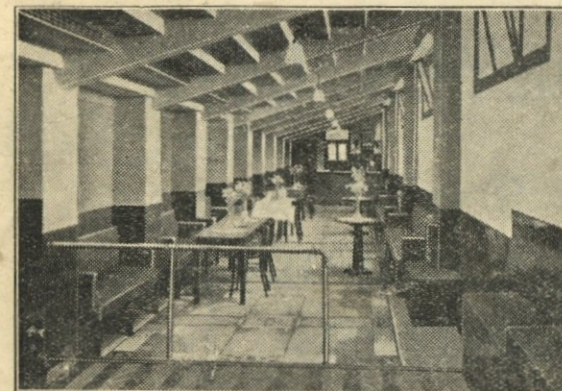
**BOBBERS STAND CLUB**

President: P. W. Wright, Esq.

Hon. Secretary-Treasurer: J. Collier.

Committee: Messrs F. Cooper, F. Dean,  
A. Flitton, E. Gibbs, J. Meades, S. Setchell.

'Phone 2566.



On Saturday we not only found that Tottenham had spurs at White Hart Lane, but they brought some to Luton, and both teams were successful in using them to obtain both points. This, we all agree, is not the form we can produce and the critics tell us we were rather unlucky, still there the tale ends and they obtained the points. Now, on Wednesday, if luck gets promotion, well Sheffield United will have it as all will agree that we should have had two points added to our total. The lads did wonderfully well, and no doubt no one was more disappointed than the players themselves.

Today we have with us a club known

everywhere, with Cup and League honours. We hope to see them lose the valuable points we want, as we are now getting badly in need of one or two. This applies also to our second string.

On Wednesday, the Sheffield Players and Directors paid a visit to the Bobbers Stand Club and stayed quite a long time in viewing the premises. Of course the players indulged in Skittles and we found that they could knock the pins down, also get bulls at Darts. The Directors informed the Secretary, Mr. Collier, of their intention to do something of the kind for their shilling supporters, so as to foster the great game. So you supporters that are not members of the Bobbers join us at once and let us keep at the top of the tree by being the largest supporters club or, as we are known, Bobbers Stand Club. It only costs you 1/2 a year.

*Luton's Oldest and Largest  
Restaurant*

SEATING ACCOMMODATION FOR 300  
ESTABLISHED 65 YEARS

*Private Parties Catered For*

**CENTRAL  
RESTAURANT**

20-22-24, CHEAPSIDE  
PHONE 172

Proprietor: S. G. Primell

**A. E.  
NICHOLLS**

Wholesale  
CONFECTIONER & TOBACCONIST

CAN SUPPLY YOU WITH  
EVERYTHING YOU WANT  
FOR THE TOBACCO AND  
CONFECTIONERY TRADE  
AT LOWEST PRICES



Prompt Delivery and Civility

16, MILL STREET, LUTON

'Phone: Luton 902







## FIXTURES 1937-8

1ST XI Division II			F.	A.
Sat., Aug. 28	Stockport County	...	A	1 2
Wed., Sept. 1	Aston Villa	...	H	3 2
Sat., " 4	Manchester United	...	H	1 0
Mon., " 6	Aston Villa	...	A	1 4
Sat., " 11	Sheffield United	...	A	0 2
Sat., " 15	Newcastle United	...	A	3 1
Sat., " 18	Tottenham Hotspur	...	H	2 4
Sat., " 25	Burnley	...	A	2 3
Sat., Oct. 2	Bury	...	H	0 1
Sat., " 9	Coventry City	...	A	1 2
Sat., " 16	Bradford	...	A	1 1
Sat., " 23	West Ham United	...	H	2 2
Sat., " 30	Southampton	...	A	6 3
Sat., Nov. 6	Blackburn Rovers	...	H	4 1
Sat., " 13	Sheffield Wednesday	...	A	0 4
Sat., " 20	Chesterfield	...	H	1 1
Sat., " 27	Plymouth Argyle	...	A	4 2
Sat., Dec. 4	Fulham	...	H	4 0
Sat., " 11	Swansea Town	...	A	1 1
Sat., " 18	Norwich City	...	H	4 0
Sat., " 25	Barnsley	...	A	1 3
Mon., " 27	Barnsley	...	A	1 3
Sat., Jan. 1	Stockport County	...	H	6 4
Sat., " 8	Scarborough (F.A. Cup)	...	A	1 1
Wed., " 12	Scarborough (F.A. Cup Replay)	...	H	5 1
Sat., " 15	Manchester United	...	A	2 4
Sat., " 22	Swindon Town (F.A. Cup)	...	H	2 1
Sat., " 29	Tottenham Hotspur	...	A	0 3
Wed., Feb. 2	Sheffield United	...	H	2 3
Sat., " 5	Burnley	...	H	1 1
Sat., " 12	Manchester City (F.A. Cup)	...	A	1 1
Wed., " 16	Bury	...	H	1 1
Sat., " 19	Coventry City	...	H	1 1
Sat., " 26	Bradford	...	H	1 1
Sat., Mar. 5	West Ham United	...	A	1 1
Sat., " 12	Southampton	...	H	1 1
Sat., " 19	Blackburn Rovers	...	A	1 1
Sat., " 26	Sheffield Wednesday	...	H	1 1
Sat., April 2	Chesterfield	...	A	1 1
Sat., " 9	Plymouth Argyle	...	H	1 1
Fri., " 15	Nottingham Forest	...	A	1 1
Sat., " 16	Fulham	...	H	1 1
Mon., " 18	Nottingham Forest	...	H	1 1
Sat., " 23	Swansea Town	...	A	1 1
Sat., " 30	Norwich City	...	A	1 1
Sat., May 7	Newcastle United	...	H	1 1

## RESERVE FIXTURES London Combination F. A.

Sat., Aug. 28	Southend United	...	5 1 H	3 1
Thur., Sept. 2	Clapton Orient	...	0 1 A	7 0
Sat., " 4	Portsmouth	...	0 3 A	0 0
Wed., " 8	Clapton Orient	...	0 1 H	3 0
Sat., " 11	Chelsea	...	3 2 H	1 1
Wed., " 15	Bournemouth	...	1 3 A	1 1
Sat., " 18	Tottenham Hotspur	...	1 5 A	3 1
Wed., " 22	Leicester City	...	1 2 H	0 1
Sat., " 25	Queens Park Rangers	...	4 0 H	2 2
Mon., " 27	Leicester City	...	1 2 A	1 4
Sat., Oct. 2	Charlton Athletic	...	0 3 A	0 4
Sat., " 9	Brighton & Hove A.	...	1 2 H	6 2
Wed., " 13	Bristol City	...	1 1 A	2 3
Sat., " 16	Swansea Town	...	2 0 H	1 1
Sat., " 23	Crystal Palace	...	1 2 A	3 1
Sat., " 30	Reading	...	6 2 H	3 1
Sat., Nov. 6	Fulham	...	1 1 A	1 5
Sat., " 13	Millwall	...	5 3 H	1 1
Sat., " 20	Brentford	...	0 3 A	0 3
Sat., " 27	Arsenal	...	1 1 H	1 2
Sat., Dec. 4	Southampton	...	0 5 A	2 0
Sat., " 11	West Ham	...	1 2 H	0 1
Sat., " 18	Watford	...	3 3 A	2 3
Sat., " 25	Coventry City	...	1 2 A	0 1
Mon., " 27	Coventry City	...	0 5 H	4 0
Sat., Jan. 1	Southend United	...	1 1 A	0 4
Sat., " 8	Northampton Town	...	3 4 H	3 3
Sat., " 15	Portsmouth	...	1 1 H	1 2
Sat., " 22	Chelsea	...	1 2 A	2 6
Sat., " 29	Tottenham Hotspur	...	3 2 H	0 2
Sat., Feb. 5	Queens Park Rangers	...	1 2 A	1 1
Sat., " 19	Brighton & Hove A.	...	3 2 A	1 1
Sat., " 26	Swansea Town	...	1 0 A	1 1
Sat., Mar. 5	Crystal Palace	...	2 5 H	1 1
Sat., " 12	Reading	...	1 1 A	1 1
Sat., " 19	Fulham	...	4 0 H	1 1
Sat., " 26	Millwall	...	2 9 A	1 1
Sat., April 2	Brentford	...	4 2 H	1 1
Sat., " 9	Arsenal	...	0 10 A	1 1
Fri., " 15	Northampton Town	...	1 4 A	1 1
Sat., " 16	Southampton	...	3 1 H	1 1
Sat., " 19	Bristol City	...	1 1 H	1 1
Sat., " 23	West Ham	...	1 6 A	1 1
Wed., " 27	Charlton Athletic	...	1 1 H	1 1
Sat., " 30	Watford	...	5 1 H	1 1
Wed., May 4	Bournemouth	...	2 1 H	1 1

## LEAGUE TABLES

LEAGUE DIVISION II							
	Pld.	Won	Lost	Drn.	For	Agst.	P.
Sheffield United	27	17	7	3	54	36	37
Aston Villa	26	14	6	5	47	23	35
Coventry City	26	12	5	9	39	30	33
Manchester United	25	13	7	5	51	33	31
Bradford	25	11	5	10	43	28	31
Burnley	26	10	8	9	37	35	29
West Ham United	25	9	6	10	37	28	28
Chesterfield	25	10	7	8	43	35	28
Tottenham Hotspur	26	12	11	3	48	36	27
Bury	25	11	10	4	33	31	26
Norwich City	26	9	11	6	44	53	24
LUTON TOWN	26	9	12	5	53	54	23
Sheffield Wednesday	26	8	11	7	32	38	23
Blackburn Rovers	26	8	11	7	46	56	23
Barnsley	27	9	13	5	39	50	23
Southampton	26	9	12	5	37	54	23
Newcastle United	24	8	10	6	31	32	22
Notts Forest	26	8	12	6	30	36	22
Fulham	25	7	12	6	34	40	20
Stockport County	25	7	12	6	28	42	20
Swansea Town	26	5	11	10	28	46	20
Plymouth Argyle	26	6	14	6	32	50	18

LONDON COMBINATION							
	Pld.	Won	Lost	Drn.	For	Agst.	P.
Arsenal	28	15	3	10	79	32	40
Coventry City	28	18	6	4	60	35	40
West Ham United	31	16	9	6	66	41	38
Fulham	30	15	8	7	51	44	37
Watford	30	15	9	6	60	65	35
Portsmouth	28	12	7	9	52	38	33
Queens Park Rangers	27	13	7	7	59	41	33
Charlton Athletic	27	15	10	2	53	43	32
Tottenham Hotspur	30	11	8	9	57	42	31
Chelsea	28	11	9	8	55	47	30
Millwall	29	14	13	2	56	57	30
Bristol City	30	10	12	8	48	55	28
Southend United	29	10	11	7	52	49	27
Crystal Palace	29	10	13	6	54	63	26
Southampton	29	9	14	6	58	59	24
LUTON TOWN	30	9	15	6	57	60	24
Leicester City	28	9	14	5	53	58	23
Swansea Town	29	7	13	9	34	53	23
Clapton O.	25	9	12	4	38	49	22
Bournemouth	28	8	14	6	40	62	22
Northampton	30	8	16	6	52	73	22
Brighton & Hove A.	28	7	13	8	47	78	22
Reading	29	8	16	5	50	67	21
Brentford	27	7	13	7	36	56	21

# Edward Martell

## & Co., Ltd.

TELEPHONE

896-7

Coal and Coke Merchants

ESTABLISHED

1879

24, UPPER GEORGE STREET, LUTON

## Burn "Hucknall" Ashless Coal

### It Scores Every Time!!

Popular Price! Saves Labour!! Great Heat!!!

WHY NOT TRY IT?

## CARRY ON

## LUTON TOWN!

a packet of

SWEET

# ROSEMARY

TOBACCO

is always enjoyable

## W. & F. FAULKNER

## LONDON

BRANCH OF THE IMPERIAL TOBACCO CO.  
(OF GREAT BRITAIN AND IRELAND), LIMITED

For  
PRINTING  
THAT

# SATISFIES

both for

Price and Quality



## E. A. ALLEN

424, Dunstable Road, Luton

TELEPHONE 1626



# RALEIGH

## THE ALL-STEEL BICYCLE

When you are buying a bicycle ask yourself these questions:—

Is it individually produced in the world's largest and best equipped cycle factory?

Has it an exclusive design which ensures easiest possible running?

Is the plating and enamel extra thick to withstand the most inclement weather?

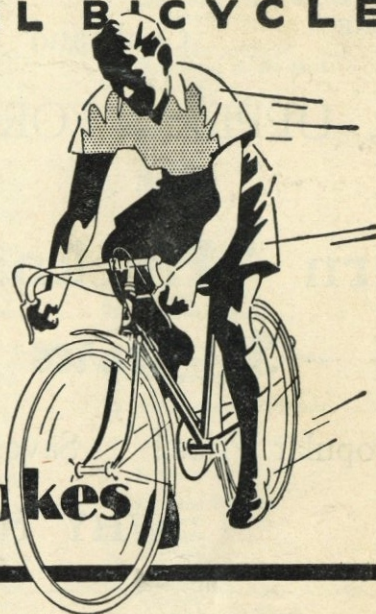
— the Raleigh is the answer to these questions. It will give you the finest possible cycle value because it is superior even to the spokes.

From **£5/10/-** Cash

OR EASY TERMS

Write for Catalogue

**Superior**  
**Even to the spokes**



THE  
HOUSE  
FOR  
ALL  
INDOOR  
GAMES

SEE SPECIAL  
WINDOW DISPLAY  
of  
BILLIARD  
TABLES  
AND ACCESSORIES

THE  
HOUSE  
FOR  
ALL  
SPORTS  
GOODS

*A. G. Partridge & Co*

PHONE 234

10-12 CHAPEL ST.  
LUTON