



LUTON TOWN FOOTBALL AND ATHLETIC CO. LTD.

OFFICIAL
JOURNAL

PRICE 2d



F.A. Cup—Round 4.

January 22nd, 1938.

LUTON TOWN v. SWINDON TOWN

“TRUE-FORM”

THE FINEST FOOTWEAR
IN THE TOWN



BUY DIRECT FROM THE MAKERS

LOCAL BRANCH:

44, GEORGE STREET

Head Office and Factories: NORTHAMPTON

Insist upon the
Building Materials for
your new house coming from

POWDRILL'S

BUILDERS' MERCHANTS
COAL and COKE MERCHANTS
BRICK MANUFACTURERS
SAND & GRAVEL QUARRY OWNERS

GEORGE POWDRILL & SON LTD., 1, 3 & 5, HITCHIN ROAD, LUTON
TELEPHONE 2073 (2 Lines)

WEMBLEY

VIA

SWINDON

ON SATURDAY

TOMORROW
CHAPEL STREET METHODIST CHURCH

Preacher at 10.45 a.m. and 6 p.m.,

Rev. JOSEPH LINEHAM, B.A., Ph.D.

A HEARTY WELCOME

Luton
Football and



Town
Athletic Co.,

LIMITED

Telephone No. 3151-2.

CLUB NOTES by "Hatter"

THIS afternoon we receive Swindon Town, who visit us in order to prove who shall have the right to enter Round 5. The luck of the draw thus once again enables us to renew our acquaintance with the "Railwaymen" and we hope foster the friendly rivalry which has existed between us since 1894, the year of the inception of the old Southern League. Since that date many have been the tussles between us, with the honours going first to one club and then to the other. Perhaps the two best recollected results of our many games, are our defeat at Swindon by nine goals to one shortly after the War, season 1920/21 I believe, and our victory at Swindon by five goals to nil in the F.A. Cup in season 1931/2. From this you will see Swindon have something to get back on us in the Cup.

Swindon Town was founded in the year 1881 by the Reverend W. Pitt, as an entirely amateur organisation and they remained such until 1894 when the status of professionalism was embraced. Their first domicile was a field known as The Croft, which ground they occupied until 1896 when a move was made to the County Ground where they have remained ever since. The season 1907/8 saw the commencement of Swindon's rise to fame, as it was in this season that entry to the F.A. Cup Competition was first made. They marked this inception by going to the Third Round. Three seasons later they reached the semi-final, being forced to succumb by Newcastle United.

The "Railwaymen" were champions of the Southern League in the season 1910/11 and repeated this performance in 1913/14, whilst it is also worthy of note that between the seasons 1907 to 1914 a place not at any time lower than fifth was obtained in the competition. The Wiltshire Club has produced many outstanding players and mention can be made of a few. First of all, in the days of long ago, are Robert Reynolds and Dick Jones. After these came Grenville Morris, one of the greatest, if not the greatest, inside left the game has ever produced, and who was capped for Wales on twenty-one occasions. The players who formed the combination of the great sides in 1908/9 were all with reputations, Skiller was a first class custodian and John Walker was a full back of renown and appeared on nine occasions in the Scottish team, whilst Harry Kay, his partner, was one whose anticipation and judgment was always excellent. This trio can be looked upon as one of the best Club defences of all times. Last but not least is Harold Fleming, a Wiltshire product, whose name is always brought to mind whenever the name of Swindon is mentioned and who figured at inside right in the English teams on no fewer than nine occasions.

A history of the "Railway" Club however, must always be incomplete if no reference is made to their general "old" secretary, Mr. Sam Allen. His connection with the Swindon Club dates back to the dim and distant regions and he has seen the Club through many vicissitudes. Always of an

outspoken nature, his phrase "the slaughter of the innocents" is a household word amongst football clubs. All know to what and to which it applies. Whenever Sam visits Luton his first question always is, "How is my old friend Charlie Green?" and when they do meet, as I expect they will do this afternoon, one can be almost assured of hearing some new old reminiscence of "prehistoric" days.

The following are a few short notes of the players who will be wearing the celebrated red jersey today:—

William Bryan (goalkeeper) Is really the deputy keeper, who is making the most of the unfortunate injury sustained by the regular custodian, Frank Wildman. Previously with Southend United.

Arthur Tonner (right full back) A newcomer to the "Railwaymen" this term. A Scotsman by birth, who last season had experience with West Ham United.

Jack Smith (left full back) Has not missed a Cup or League game since joining the Club, having made over 100 consecutive appearances. Was with Merthyr Town, Wolves and Bristol Rovers before being taken on by Manager Vizard. A sound defender and one who should go far in the game.

Harry Cousins (right half back) The oldest player in length of service and enjoyed a well earned benefit three weeks ago. Secured from Chesterfield, he has proved one of the best captures made during the closing stages of Sam Allen's term of secretary-manager.

George Morrell (centre half back) Is the former Birmingham skipper. A fine general, he has proved a popular figure and has had a lot to do with Swindon's success.

James Musgrave (left half back) Was secured from West Ham United about midway through last season. A go ahead type of player who figures in the half back position today owing to Wilcockson being out of harness due to a leg injury.

Eddie Jones (outside right) Played for Wales as a schoolboy and was at Bolton three seasons before being persuaded to come South. An exceedingly promising winger, possessing a good turn of speed, is not afraid to beat his man on the run, and has proved himself a rare opportunist.

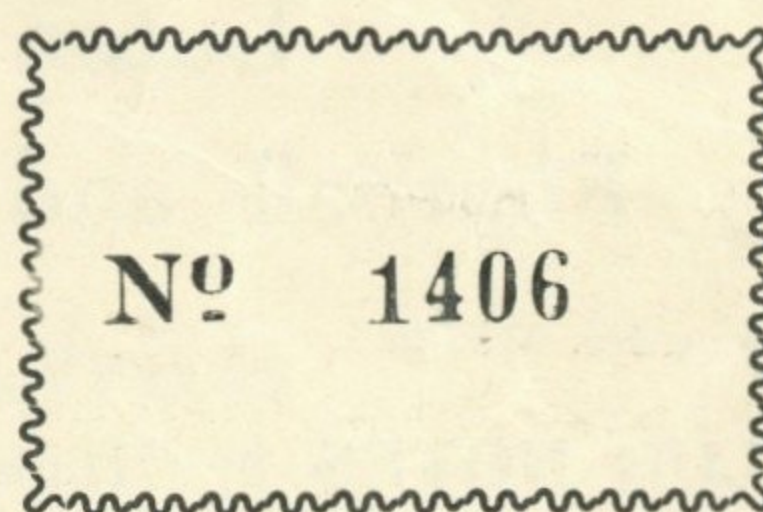
Alan Fowler (inside right) One of the "dwarfs" of the side yet brilliant with his head. Known to the Swindon crowd as "Alan the Jack in the Box." Was secured three seasons ago from Leeds United. A good goal-getter and a 100% team man.

Benjamin Morton (centre forward) Secured from Torquay United during the present season. With Torquay scored ten goals in eleven matches, but has yet to record his initial League goal for the "Railwaymen" after eleven

matches. His first point was the winning goal against Grimsby Town.

William Lucas (inside left) Another Welsh Schoolboy International and gets his run out today through Bradley having wricked an ankle during training on Thursday.

Arthur Hetherington (outside left) Cost Swindon a goodly transfer fee from Preston North End during the close season before last. Is go ahead and a dangerous winger. Has speed and exquisite ball control.



ATTENDANCE BAROMETER

		1936		1937		1936		1937	
		£ s. d.		£ s. d.		£ s. d.		£ s. d.	
	Aug. 28	*Southend United Reserves	7346	167	0	3
Aug. 29		Southend United	14353	705	11	1
Aug. 31		Southend United Reserves	3469	89	11	9
	Sept. 1	Aston Villa	25349	1299	14	4
	Sept. 4	Manchester United	20610	994	1	2
Sept. 5		Portsmouth Reserves	6048	161	8	11
Sept. 7		Walsall	11043	486	8	0
	Sept. 8	Clapton Orient Reserves	4823	93	6	7
	Sept. 11	Chelsea Reserves	7725	175	7	7
Sept. 12		Crystal Palace	13790	707	18	3
	Sept. 18	Tottenham Hotspur	23788	1235	7	8
Sept. 19		Tottenham Hotspur Reserves	5659	150	14	11
Sept. 21		Leicester City Reserves	1585	39	18	11
	Sept. 22	Leicester City Reserves	3626	69	19	2
	Sept. 25	Queens Park Rangers Reserves	6558	142	1	11
Sept. 26		Reading	16378	820	18	0
	Oct. 2	Bury	17650	821	19	0
Oct. 3		Queens Park Rangers Reserves	3558	91	13	10
	Oct. 9	Brighton and Hove Reserves	5236	107	4	10
Oct. 10		Bristol City	13255	629	1	7
	Oct. 16	Swansea Town Reserves	6592	141	16	2
Oct. 17		Watford	20569	1071	17	1
	Oct. 23	West Ham United	17757	897	18	10
Oct. 24		Southampton Reserves	4120	107	15	2
	Oct. 30	Reading Reserves	5571	116	1	10
Oct. 31		Bournemouth	11305	591	16	2
	Nov. 6	Blackburn Rovers	16776	818	16	6
Nov. 7		Fulham Reserves	3080	80	12	3
	Nov. 13	Millwall Reserves	6929	149	18	5
Nov. 14		Bristol Rovers	12784	599	6	4
	Nov. 20	Chesterfield	17088	802	11	10
Nov. 21		Millwall Reserves	3223	83	3	0
	Nov. 27	Arsenal Reserves	7116	158	2	0
Dec. 5		Fulham	13529	653	13	6
	Dec. 4	Northampton Reserves	3452	90	4	1
	Dec. 11	West Ham United Reserves	5487	114	16	2
	Dec. 18	Norwich City	14492	680	2	6
Dec. 19		Brighton & Hove Reserves	2935	77	1	4
	Dec. 25	Barnsley	15829	756	3	8
Dec. 25		Notts County	17308	889	5	6
Dec. 26		Reading Reserves	4102	112	6	9
	Dec. 27	Coventry City Reserves	9178	223	9	9
Dec. 28		Clapton Orient Reserves	1808	46	16	1
1937	1938					1937	1938		
	Jan. 1	Stockport County	14138	644	7	8
Jan. 1		Cardiff City	12093	568	2	4
	Jan. 8	Northampton Town Reserves	6672	148	19	9
Jan. 9		Charlton Athletic Reserves	3382	88	3	5
	Jan. 15	Portsmouth Reserves	4941	101	0	8
						189299	8289	14	9
						284806	11511	9	9

N.B. The attendance figures for both League II and London Combination matches, include the number of Season Tickets issued. The gate receipts are the net amounts received after Entertainment Tax has been deducted. The attendance figures for the London Combination matches in Season 1936-7 do NOT include the number of Season Tickets issued.

? ? ?

Do you see anything interesting or humorous during your Saturday afternoon visits to this ground? If so, enter our "Interest and Humour" Competition, for which there is a weekly prize of a free ticket to the Grand Stand or Enclosure for the following League II match for every paragraph printed.

Paragraphs must be confined to a maximum of one hundred words and should be addressed to "The Editor, Football Programme, 70-72, Kenilworth Road, Luton," accompanied by a copy of the Match Programme for that day.

A free ticket to the Grand Stand or Enclosure for the League II game with Sheffield United is awarded to Mr. H. Randall, 18, Beech Road, Luton, who sent in the following "Interest and Humour" story with Programme No. 3037 (1-1-38)

The humorist, without which no football crowd is complete, was greatly in evidence in the Bobbers Stand at the Stockport match. After he had ordered the referee to take his collar off and he'd ride him barebacked, he assailed Nelson, who made one or two lapses, not to emulate his namesake, but use both eyes. His crowning sally came when the Stockport goalie had a few words with the referee respecting some incident behind the goal. The referee called two policemen, who majestically stalked behind the goal. "Blimey," the wag said, "He's sent for a threepenny bit to stand on and they've sent him a couple of coppers."

PLAYERS' APPEARANCES

	League II		London Combination		F.A. Cup		Other Matches		Total	
	App.	Goals	App.	Goals	App.	Goals	App.	Goals	App.	Goals
Carte, R.	6	6	...
Childs, C.	10	7	...	17	...
Coen J. L.	14	...	2	...	1	...	29	...
Cox, G.	12	8	1	...	13	8
Dawes A. G.	20	11	2	1	22	12
Dolman, H. W.	12	19	1
Dreyer, G.	7	6	1	20	1
Fellowes, W. J.	14	26	...
Ferguson, C.	24	1	2	2	25	15
Finlayson, J.	5	4	17	8	1	1	24	6
Gager, H. E.	22	...	2	2	15	...
Griffiths, E. O.	1	5	...	6	...
Hall, L.	6	1	8	3	1	...	15	4
Hancock, E.	7	6	1	13	1
Hogg, F.	6	1	12	4	20	5
Kidd, G. I.	4	...	15	1	2	...	23	1
King, T. P.	23	1	4	...	23	1
Loughran, J.	8	22	...
Lutterloch, B. R.	4	...	18	1	22	1
McKay, N. V.	1	...	26	27	...
Mackey, T. S.	4	2	2	6	2
Mayberry, S.	11	...	12	2	25	...
Nelson, J.	6	6	...
Parris, J. E.	22	...	2	24	...
Payne, J.	5	2	7	1	12	3
Redfern, W. J.	16	8	1	3	17	11
Rich, L. T.	4	3	16	9	20	12
Roberts, F.	13	6	1	...	14	6
Smith, T. S.	20	9	4	26	9
Stephenson, G. H.	22	...	1	25	...
Stevens, R. F.	17	2	4	2	1	...	23	3
Strathie, J.	3	1	21	9	28	13
Vinall, E. J.	19	4	3	21	...
Amateurs and Others	14	8	2	2	2	...	16	10
					2	1	34	2	36	3

Next Match, Wednesday, January 26th, 1938.

(Providing either club is not engaged in Cup replays)

LEAGUE, DIVISION II

LUTON TOWN v. SHEFFIELD UNITED

KICK - OFF 3 p.m.

ADMISSION
Stand and Enclosure 2/- Centre Stand 5/- (Reserved Seats)
Boys 1/- - - - Ground 1/- Boys 6d.
All Prices include Entertainment Tax

SELL & MITCHELL

Auctioneers, Land and Estate Agents
Surveyors and Valuers

7-9, PRINCESS STREET
LUTON

TELEPHONES 2003-4

Also 95, HIGH STREET NORTH
DUNSTABLE

Telephone 354

District Agents for Woolwich Equitable Building Society

ESTABLISHED 1879

TO
LET

To-Day's Half-Time Scores
FIRST LIST

A	Aston Villa v. Blackpool
B	Barnsley v. Manchester United
C	Bradford v. Stoke City
D	Brentford v. Portsmouth
E	Charlton Athletic v. Leeds U
F	Chesterfield v. Burnley
G	Everton v. Sunderland
H	Huddersfield v. Notts County
K	Manchester City v. Bury
L	New Brighton v. Tottenham H.
M	Notts Forest v. Middlesbrough
N	Preston N. E. v. Leicester City

NOTE—The Letter in the Programme corresponds with the letter on the Board—thus A 0-1 means that the first-named Club has scored 0 and their opponents 1.



SPECIALITIES

Paint and Enamel
Manufacturers
"Stuart" Series
Wallpapers

**OGDEN &
CLEAVER**
Stuart Street, LUTON

TELEPHONE 580

Alma G. Peck

BUILDER ——— CONTRACTOR ——— DECORATOR

5 and 7, WENLOCK STREET
LUTON

PHONES 1752- 3095



**Clothes for Men with
a Taste for Style!**

The more critical you are, the more you will be satisfied with your purchases from Blundells. Up-to-date styles... dependable qualities... supreme values, await you here. Every item of wear, from socks to hat, at the keenest of prices.

BLUNDELL Bros. (LUTON) LTD.
MEN'S DEPT. 12, CHEAPSIDE, LUTON.

'WHITE'S'
have again
supplied
Luton Town
Football Club
with their Boots
—
They know
the Best

H. WHITE (Luton) LTD.,
Footwear Specialists,
MANCHESTER STREET

To-Day's Half-Time Scores
SECOND LIST

A	Sheffield United v. Liverpool
B	Wolves v. Arsenal
C	York City v. West Bromwich
D	Birmingham v. Chelsea
E	Bolton Wand. v. Derby County
F	Coventry City v. Southampton
G	Fulham v. Swansea Town
H	Sheffield Wed. v. Norwich C.
K	West Ham v. Stockport C.
L	Aldershot v. Newport County
M	Bournemouth v. Brighton & H.
N	Bristol Rovers v. Torquay U.

● When passing
through

HARPENDEN

pay a visit to

**"The
MARQUIS of
GRANBY"**

PROPRIETOR - TOM HODGSON
(Ex-Capt., Luton Town F.C.)

FULLY LICENSED

TEA GARDENS

For the

Assurance of getting correct
Results this season

Rely exclusively on the

Best. Get what you

Expect NOW by

Selecting 'FARRBEST' every
Time you buy a Machine.

GEO. F. FARR, The "Farrbest" Hatter's Engineer
COLLINGTON STREET, LUTON
ESTABLISHED 1909

Telephone:
Luton 2055 (2 lines)

Telegrams:
"Farrbest," Luton

don't get wet!
GET A MAC
(OR A RAINCOAT)

from

MAREES!

Many famous makes in stock

Charles **MAREES** Limited



George Street & Dunstable Road
LUTON And at St. Albans

TODAY

**PALACE
THEATRE**
LUTON

TODAY

SHIRLEY TEMPLE

and VICTOR McLAGLEN in

"WEE WILLIE WINKIE" (U)

NEXT WEEK

NEXT WEEK

JESSIE MATTHEWS in 'GANGWAY'

(A)

J.W. GREEN'S
No. 1 STRONG ALE

WINTER BREW — WINNER, TOO!

Ask for a "LITTLE JOHN" per 6d. nip

beer is best

J. W. GREEN LIMITED, The Brewery, LUTON

Telephone - Luton 3131

L-M-S
RAILWAY

Saturday, 29th January, 1938

Depart—1.25 p.m.

NORTHUMBERLAND

PARK

(TOTTENHAM v. LUTON)

Return Fares—

3/-

FOOTBALL
RUGBY—HOCKEY
BADMINTON
GOLF—FISHING
DARTS and
DARTBOARDS
a Speciality
MINIATURE
BILLIARD TABLES
ROLLER SKATES
in Great Variety

ALL INDOOR GAMES
MONOPOLY—The New Game

SEE WINDOWS

G. A. WILD
AND SONS

Sports Outfitters

14, Manchester Street, Luton
103, High Street N., Dunstable

BOOK AT
BAILEY'S
FOR

LONDON COASTAL COACHES
ALL INDEPENDENT SERVICES

JERSEY AIRWAYS
LONDON THEATRES

AND
AMUSEMENTS

Daily Services to all
parts of Great Britain

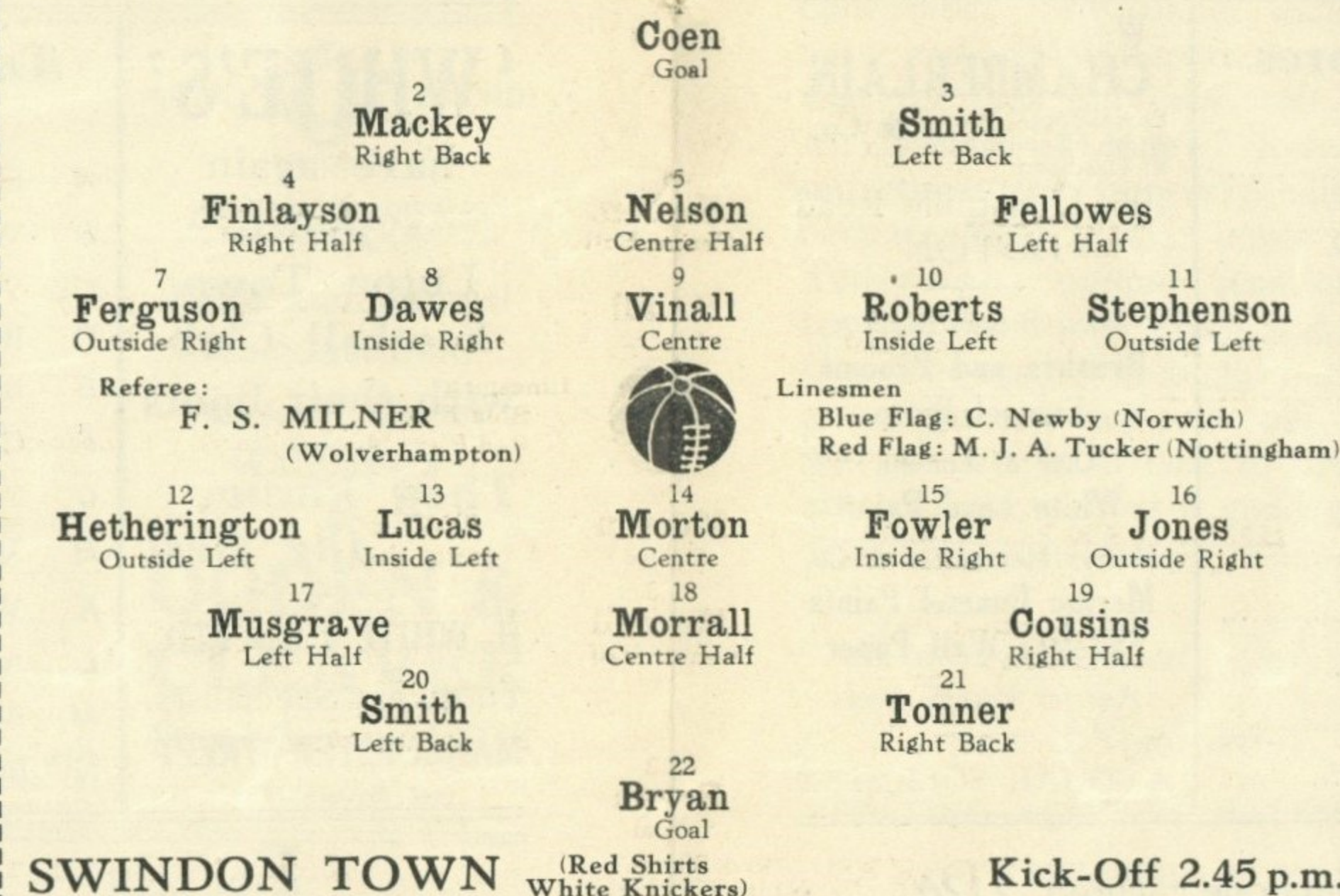
TOBACCONIST
AND BOOKING AGENT

38, NEW BEDFORD ROAD
LUTON

Phone 1972

LUTON TOWN (White Shirts
Black Knickers)

F.A. Cup—Round 4



SWINDON TOWN (Red Shirts
White Knickers)

Kick-Off 2.45 p.m.

WE'RE THERE!

BIRD'S

for

BUILDING
AND DECORATIVE
MATERIALS

CHARLES BIRD & SONS, Limited
Collingdon Street, LUTON

Telephone 1255

— Also —

Corrugated Iron, Wire Netting,
Chain Link Fencing, Chestnut
Paling, Creosote and Garden
Sundries

HARRY CANHAM

Cardboard Box

Packing Case, Ply Box and

Crate Manufacturer

9a, MARKET HILL, LUTON

TELEPHONE 458

For a GOOD DINNER
TEA or SUPPER

try

J. BEDDALL

PARTIES CATERED FOR
SATISFACTION ASSURED

67, LEAGRAVE ROAD
LUTON

A few minutes walk from the
Football Ground

WINES AND SPIRITS

R. H. Marks Ltd.

69, George Street
and at 81, High Town Road

Luton

AGENTS FOR

MANN, CROSSMAN & PAULIN LTD.
BEERS and STOUTS

The man who
BUYS HIS HOUSE
through our Society
"SCORES A GOAL"
every time

Full details from—

LUTON & MIDLANDS
BUILDING SOCIETY

Telephone: Luton 1067

11, George St.
West
LUTON

WEBDALE'S

of WELLINGTON STREET

FOR

Kitchen Equipment

AND ALL

Household Requirements

AT LOWEST PRICES

21 to 27 WELLINGTON STREET

'Phone: Luton 41

LUTON

Charnley
and Sons

REGISTERED
OPTICIANS

National Health
Insurance

On the Official List of
H.S.A. Opticians

11, Wellington Street
LUTON
Telephone 1808

We are offering
GENUINE 10/6
FOUNTAIN PENS

for

5/6

Nibs to suit all
oooo

W. F. BUNKER
"Fountpen Hospital"
26a, Chapel St., Luton
PHONE 224

E. A. GREEN

BOOKSELLER
NEWSAGENT
STATIONER

Luton's Most
Progressive Circulating
Library

21a, New Bedford Road
and 228, Biscot Road
LUTON
Telephone 476

F. WHITE

Builder
and
Contractor

141,
Stockingstone Road
LUTON



All Classes of
Repairs, Painting and
Decorating Under-
taken

ESTIMATES FREE

To-Day's Half-Time Scores

THIRD LIST

A	Cardiff C. v. Queens Park R.
B	Exeter City v. Watford
C	Gillingham v. Mansfield Town
D	Northampton v. Clapton O.
E	Reading v. Crystal Palace
F	Walsall v. Southend United
G	Crewe Alexandra v. Darlington
H	Halifax Town v. Carlisle U.
K	Lincoln City v. Hull City
L	Millwall v. Blackburn Rovers
M	Newcastle U. v. Grimsby T.
N	Plymouth A. v. Bristol City

W. CHAMBERLAIN
& Co.

Proprietors—
A. M. Chamberlain
R. Deadman

106, Dunstable Road
LUTON

Best British Made
Brushes and Brooms
Enamel Ware

City of London
White Lead Paint

Messrs Merrediths & Co.
Merlac Enamel Paints
Fadeless Wall Paper

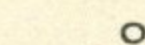
Ask for Pattern Books

A TRIAL SOLICITED

W. HOLES

3, Gordon Street, Luton
Coal and
Coke Merchant

Authorized Agent for
Luton Gas Company's
large and graded coke



Agent for
L.M.S. Passenger Dept.

Telephone 210



Telephone: Luton 2126.

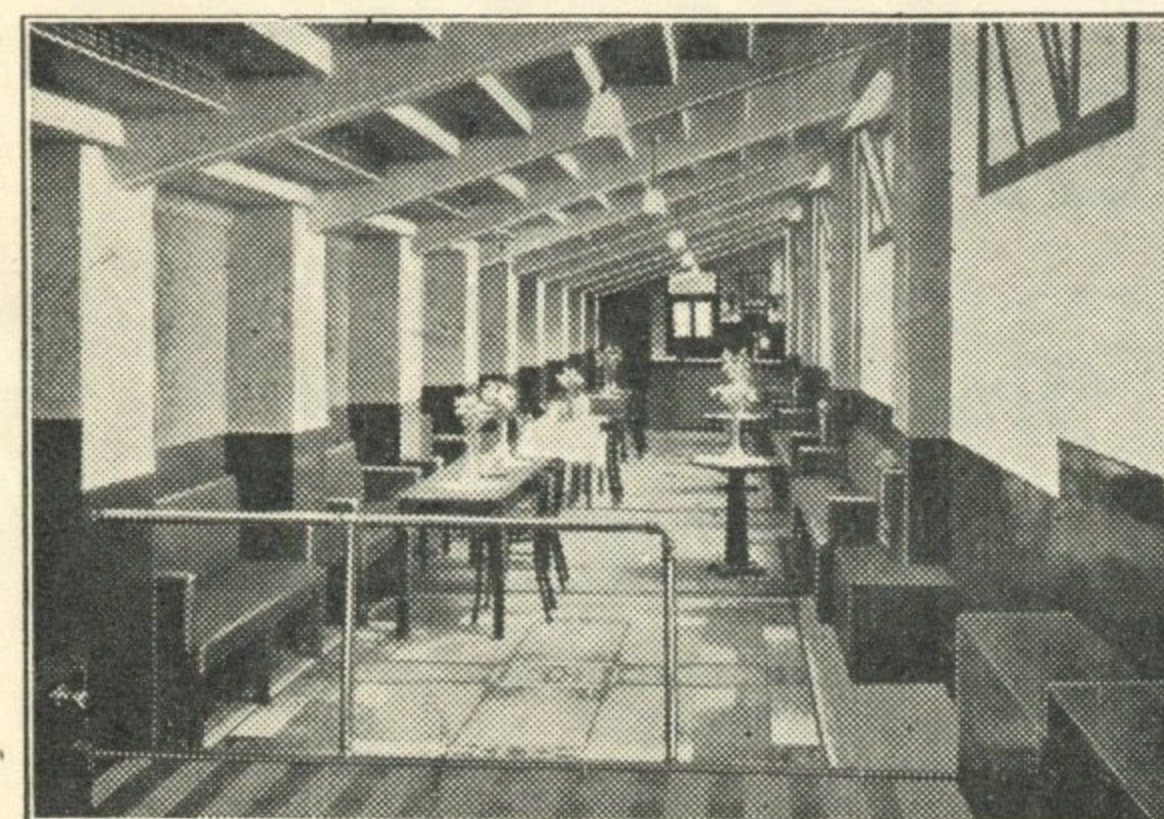
P. W. SMITH,

BUILDER

HIGH CLASS DECORATOR

CONTRACTOR

418, Dunstable Road,
Luton.



BOBBERS STAND CLUB

President: P. W. Wright, Esq.

Hon. Secretary-Treasurer: J. Collier.

Committee: Messrs F. Cooper, F. Dean,
A. Flitton, E. Gibbs, J. Meades, S. Setchell.

'Phone 2566.

us hope our boys will be just one too many for the "Railwaymen." It is up to all supporters to give the lads our little bit of help, with those usual cheers and do not stop the shouts until you can see us well on the way for the next round. Now a word to the followers of our visitors. If any of you wish to get tea, either at half-time or after the game, visit the Bobbers Stand Club or any of the Bars you see around the ground, you can be assured of an excellent repast.

JOIN THE BOBBERS

Only 1/2 per Year

and Help the Football Club

*Luton's Oldest and Largest
Restaurant*

SEATING ACCOMMODATION FOR 300

ESTABLISHED 65 YEARS

Private Parties Catered For

**CENTRAL
RESTAURANT**

20-22-24, CHEAPSIDE

PHONE 172

Proprietor: S. G. Primett

**A. E.
NICHOLLS**

Wholesale
CONFECTIONER & TOBACCONIST

CAN SUPPLY YOU WITH
EVERYTHING YOU WANT
FOR THE TOBACCO AND
CONFECTIONERY TRADE
AT LOWEST PRICES



Prompt Delivery and Civility

16, MILL STREET, LUTON

'Phone: Luton 902

The Reliable Firm for
ALL CLASSES OF BUILDINGS
AND DECORATIONS

REPAIRS OF ALL KINDS A
SPECIALITY

17a, WINDSOR STREET, LUTON

TELEPHONE 594

AT THE

SEE OUR WINDOWS AND
PRESS ANNOUNCEMENTS
FOR FULL PARTICULARS

*NOW is the time to buy your car
for prices will rise in the spring*

FOOTBALL LEAGUE DIVISION II

RESULTS AT A GLANCE

	Aston Villa	Barnsley	Blackburn R.	Bradford	Burnley	Bury	Chesterfield	Coventry City	Fulham	Luton T.	Manch. U.	Newcastle U.	Norwich City	Notts Forest	Plymouth A.	Sheffield U.	Sheffield W.	Southampton	Stockport C.	Swansea T.	Tottenham H.	West Ham
Aston Villa ...	H	3 0	2 1	2 1	0 0	1 1	0 2	1 1	2 0	4 1	1 3	2 0	0 1	2 0	3 0	1 0	2 1	3 0	7 1	0 0	1 2	2 0
Barnsley ...	H	0 1	3 5	0 1	2 2	2 0	0 0	0 0	0 0	3 1	1 4	3 0	0 1	1 2	3 2	1 1	4 1	0 2	2 0	2 0	0 3	1 1
Blackburn Rovers ...	H	1 2	5 3	0 0	3 3	1 2	3 3	1 3	2 2	1 4	1 1	2 1	5 3	1 3	2 1	1 1	0 0	4 0	1 0	3 1	0 3	1 4
Bradford ...	H	1 2	4 3	0 0	1 1	1 1	0 0	0 0	1 1	1 1	4 0	0 3	3 0	2 2	2 0	1 3	1 1	2 0	2 1	2 0	3 1	0 2
Burnley ...	H	0 0	2 2	1 1	0 4	2 0	0 2	0 1	1 0	3 2	0 0	2 2	0 0	0 0	0 0	2 0	1 1	4 0	0 0	1 3	0 4	0 1
Bury ...	H	1 1	0 2	1 1	4 0	0 2	2 1	0 2	0 0	1 0	1 2	1 1	2 1	0 1	2 0	1 0	0 2	1 4	0 0	0 0	1 2	4 3
Chesterfield ...	H	0 0	3 0	0 0	1 2	1 2	0 0	2 2	0 2	1 1	1 7	0 0	6 2	2 4	2 0	1 0	1 0	5 0	1 1	2 2	2 2	0 5
Coventry City ...	H	1 1	3 1	0 0	1 0	2 0	2 2	0 0	1 1	2 1	1 0	2 2	2 0	1 1	4 0	2 0	0 1	1 0	1 0	1 0	2 1	0 0
Fulham ...	H	0 0	2 2	1 1	2 1	0 1	1 1	3 4	0 4	0 4	1 0	1 2	3 4	1 0	2 3	1 2	0 0	0 0	0 2	3 3	3 1	0 0
LUTON TOWN ...	H	3 2	4 0	1 1	2 3	0 1	1 1	1 2	4 0	0 0	1 0	3 1	1 1	4 2	4 2	0 2	0 4	6 3	1 2	6 4	2 4	2 2
Manchester United ...	H	3 1	4 1	1 1	0 4	2 1	7 1	0 1	0 1	4 2	2 0	3 0	3 2	4 3	0 0	0 1	1 0	1 2	0 1	5 1	1 0	0 0
Newcastle United ...	H	0 2	0 3	1 2	3 0	2 2	0 0	1 2	2 1	1 3	2 3	0 0	0 0	0 0	3 1	6 0	1 0	3 0	0 0	1 0	2 2	0 1
Norwich City ...	H	1 0	1 0	3 2	1 1	1 2	2 6	0 2	4 3	1 1	2 3	0 0	0 2	2 0	4 0	1 4	3 1	4 3	1 1	1 1	2 1	2 2
Notts Forest ...	H	0 2	2 1	3 1	2 2	1 0	4 2	1 1	0 1	1 1	2 2	0 0	0 2	0 0	0 1	2 1	2 0	0 2	0 1	2 2	3 1	0 0
Plymouth Argyle ...	H	0 3	2 2	2 2	2 3	2 1	0 2	0 4	4 0	2 4	0 0	1 3	0 4	1 0	0 0	2 0	2 4	0 0	2 1	5 3	2 3	2 0
Sheffield United ...	H	0 1	1 1	1 1	2 1	2 1	0 2	3 2	2 1	2 0	1 0	0 6	4 1	2 1	0 2	1 1	1 0	5 0	2 0	3 3	1 1	1 0
Sheffield Wednesday	H	1 2	1 4	1 1	1 1	2 0	1 0	1 0	2 1	4 0	0 1	0 1	1 3	0 2	1 1	0 1	0 0	2 5	3 3	4 1	2 1	3 3
Southampton ...	H	0 0	2 0	0 4	0 2	4 1	0 1	0 5	2 0	3 6	2 1	0 3	3 4	1 0	0 0	0 5	5 2	0 0	0 0	2 0	3 2	0 0
Stockport County ...	H	1 7	0 2	1 2	0 0	1 1	1 1	0 1	2 0	4 6	1 0	0 0	1 1	2 1	1 2	0 2	3 3	1 4	0 2	0 2	0 2	1 2
Swansea Town ...	H	0 2	3 2	0 1	3 1	0 0	1 0	3 3	2 0	1 1	1 5	0 1	1 1	1 2	2 2	3 5	1 1	0 0	0 2	2 0	0 2	2 0
Tottenham Hotspur ...	H	2 1	3 0	3 1	4 0	1 3	2 2	1 2	1 3	4 2	0 1	2 2	1 2	3 0	3 2	0 2	3 0	1 2	2 3	2 0	0 2	1 2
West Ham ...	H	1 1	4 1	2 0	3 1	1 0	5 0	0 0	0 0	2 2	0 0	1 0	3 3	0 0	0 0	0 2	0 1	1 7	0 0	2 1	0 0	0 2

FIXTURES 1937-8

FIRST XI Division II

F. A.

Sat., Aug. 28	Stockport County	...	A	1	2
Wed., Sept. 1	Aston Villa	...	H	3	2
Sat., " 4	Manchester United	...	H	1	0
Mon., " 6	Aston Villa	...	A	1	4
Sat., " 11	Sheffield United	...	A	0	2
Wed., " 15	Newcastle United	...	A	3	1
Sat., " 18	Tottenham Hotspur	...	H	2	4
Sat., " 25	Burnley	...	A	2	3
Sat., Oct. 2	Bury	...	H	0	1
Sat., " 9	Coventry City	...	A	1	2
Sat., " 16	Bradford	...	A	1	1
Sat., " 23	West Ham United	...	H	2	2
Sat., " 30	Southampton	...	A	6	3
Sat., Nov. 6	Blackburn Rovers	...	H	4	1
Sat., " 13	Sheffield Wednesday	...	A	0	4
Sat., " 20	Chesterfield	...	H	1	1
Sat., " 27	Plymouth Argyle	...	A	4	2
Sat., Dec. 4	Fulham	...	H	4	0
Sat., " 11	Swansea Town	...	A	1	1
Sat., " 18	Norwich City	...	H	1	1
Sat., " 25	Barnsley	...	H	4	0
Mon., " 27	Barnsley	...	A	1	3
Sat., Jan. 1	Stockport County	...	H	6	4
Sat., " 8	Scarborough (F.A. Cup)	...	A	1	1
Wed., " 12	Scarborough (F.A. Cup Replay)	...	H	5	1
Sat., " 15	Manchester United	...	A	2	4
Sat., " 22	Swindon Town (F.A. Cup)	...	H		
Wed., " 26	Sheffield United	...	H		
Sat., " 29	Tottenham Hotspur	...	A		
Sat., Feb. 5	Burnley	...	H		
Sat., " 12	Bury	...	A		
Sat., " 19	Coventry City	...	H		
Sat., " 26	Bradford	...	H		
Sat., Mar. 5	West Ham United	...	A		
Sat., " 12	Southampton	...	H		
Sat., " 19	Blackburn Rovers	...	A		
Sat., " 26	Sheffield Wednesday	...	H		
Sat., April 2	Chesterfield	...	A		
Sat., " 9	Plymouth Argyle	...	H		
Fri., " 15	Nottingham Forest	...	A		
Sat., " 16	Fulham	...	A		
Mon., " 18	Nottingham Forest	...	H		
Sat., " 23	Swansea Town	...	H		
Sat., " 30	Norwich City	...	A		
Sat., May 7	Newcastle United	...	H		

RESERVE FIXTURES London Combination F. A.

Sat., Aug. 28	Southend United	...	5	1	H	3	1
Thur., Sept. 2	Clapton Orient	...	0	1	A	7	0
Sat., " 4	Portsmouth	...	0	3	A	0	0
Wed., " 8	Clapton Orient	...	0	1	H	3	0
Sat., " 11	Chelsea	...	3	2	H	1	1
Wed., " 15	Bournemouth	...	1	3	A	1	1
Sat., " 18	Tottenham Hotspur	...	1	5	A	3	5
Wed., " 22	Leicester City	...	1	2	H	0	1
Sat., " 25	Queens Park Rangers	...	4	0	H	2	2
Mon., " 27	Leicester City	...	1	2	A	1	4
Sat., Oct. 2	Charlton Athletic	...	0	3	A	0	4
Sat., " 9	Brighton & Hove A.	...	1	2	H	6	2
Wed., " 13	Bristol City	...	1	1	A	2	3
Sat., " 16	Swansea Town	...	2	0	H	1	1
Sat., " 23	Crystal Palace	...	1	2	A	3	1
Sat., " 30	Reading	...	6	2	H	3	1
Sat., Nov. 6	Fulham	...	1	1	A	1	5
Sat., " 13	Millwall	...	5	3	H	5	1
Sat., " 20	Brentford	...	0	3	A	0	3
Sat., " 27	Arsenal	...	1	1	H	1	2
Sat., Dec. 4	Southampton	...	0	5	A	2	0
Sat., " 11	West Ham	...	1	2	H	0	1
Sat., " 18	Watford	...	3	3	A	2	3
Sat., " 25	Coventry City	...	1	2	A	0	1
Mon., " 27	Coventry City	...	0	5	H	4	0
Sat., Jan. 1	Southend United	...	1	1	A	0	4
Sat., " 8	Northampton Town	...	3	4	H	3	3
Sat., " 15	Portsmouth	...	1	1	H	1	2
Sat., " 22	Chelsea	...	1	2	A		
Sat., " 29	Tottenham Hotspur	...	3	2	H		
Sat., Feb. 5	Queens Park Rangers	...	1	2	A		
Sat., " 12	Charlton Athletic	...	1	1	H		
Sat., " 19	Brighton & Hove A.	...	3	2	A		
Sat., " 26	Swansea Town	...	1	0	A		
Sat., Mar. 5	Crystal Palace	...	2	5	H		
Sat., " 12	Reading	...	1	1	A		
Sat., " 19	Fulham	...	4	0	H		
Sat., " 26	Millwall	...	2	9	A		
Sat., April 2	Brentford	...	4	2	H		
Sat., " 9	Arsenal	...	0	10	A		
Fri., " 15	Northampton Town	...	1	4	A		
Sat., " 16	Southampton	...	3	1	H		
Tues., " 19	Bristol City	...	1	1	H		
Sat., " 23	West Ham	...	1	6	A		
Sat., " 30	Watford	...	5	1	H		
Wed., May 4	Bournemouth	...	2	1	H		

LEAGUE TABLES

LEAGUE DIVISION II

	Pld.	Won	Lost	Drn.	For	Agst.	P.
Aston Villa	24	13	5	5	43	19	33
Sheffield United	25	15	7	3	45	31	33
Coventry City	23	11	3	9	37	24	31
Bradford	23	10	4	10	35	25	29
Manchester United	23	12	7	4	46	30	28
Burnley	24	9	8	8	34	33	26
Tottenham Hotspur	24	11	10	3	45	35	25
Chesterfield	23	9	7	7	38	34	25
West Ham United	23	7	6	10	33	27	24
Norwich City	24	9	9	6	43	50	24
LUTON TOWN	24	9	10	5	51	48	23
Bury	23	9	10	4	29	31	22
Barnsley	25	9	12	4	34	42	22
Notts Forest	24	8	11	5	29	33	21
Blackburn Rovers	24	7	10	7	44	49	21
Sheffield Wednesday	24	7	10	7	28	34	21
Southampton	23	8	10	5	34	48	21
Newcastle United	22	7	9	6	29	30	20
Stockport County	23	7	10	6	27	38	20
Swansea Town	24	4	10	10	26	38	18
Plymouth Argyle	24	6	13	5	31	48	17
Fulham	23	5	12	6	24	38	16

LONDON COMBINATION

	Pld.	Won	Lost	Drn.	For	Agst.	P.
Coventry City	26	17	5	4	58	32	38
Arsenal	26	14	3	9	74	29	37
West Ham United	29	16	8	5	66	38	37
Fulham	28	15	8	5	48	41	35
Portsmouth	27	12	6	9	52	37	33
Watford	28	14	8	6	57	61	33
Queens Park Rangers	25	12	7	6	52	39	30
Charlton Athletic	25	14	9	2	47	39	30
Millwall	27	13	12	2	52	54	28
Tottenham Hotspur	26	9	8	9	52	41	27
Chelsea	26	9	9	8	46	44	26
Bristol City	27	9	10	8	44	49	26
Southend United	27	9	11	7	49	49	25
LUTON TOWN	28	9	13	6	55	52	24
Southampton	27	9	13	5	57	57	23
Crystal Palace	27	9	13	5	49	59	23
Leicester City	25	9	12	4	50	53	22
Bournemouth	27	8	13	6	39	58	22
Northampton	28	8	15	5	49	68	21
Clapton O.	23	8	11	4	35	42	20
Reading	27	8	15	4	47	63	20
Brentford	25	6	12	7	35	53	19
Brighton & Hove A.	26	6	13	7	43	75	19
Swansea Town	26	5	13	8	30	53	18

Edward Martell
& Co., Ltd.

TELEPHONE

896-7

Coal and Coke Merchants

ESTABLISHED

1879

24, UPPER GEORGE STREET, LUTON

Burn "Hucknall" Ashless Coal
It Scores Every Time!!

Popular Price! Saves Labour!! Great Heat!!!

WHY NOT TRY IT?

CARRY ON
LUTON TOWN!

a packet of

SWEET
ROSEMARY

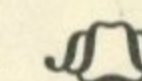
TOBACCO

is always enjoyable

W. & F. FAULKNER
LONDONBRANCH OF THE IMPERIAL TOBACCO CO.
(OF GREAT BRITAIN AND IRELAND), LIMITEDFor
PRINTING
THAT
SATISFIES

both for

Price and Quality



E. A. ALLEN

424, Dunstable Road, Luton

TELEPHONE 1626

RALEIGH

THE ALL-STEEL BICYCLE

When you are buying a bicycle ask yourself these questions:—

Is it individually produced in the world's largest and best equipped cycle factory?

Has it an exclusive design which ensures easiest possible running?

Is the plating and enamel extra thick to withstand the most inclement weather?

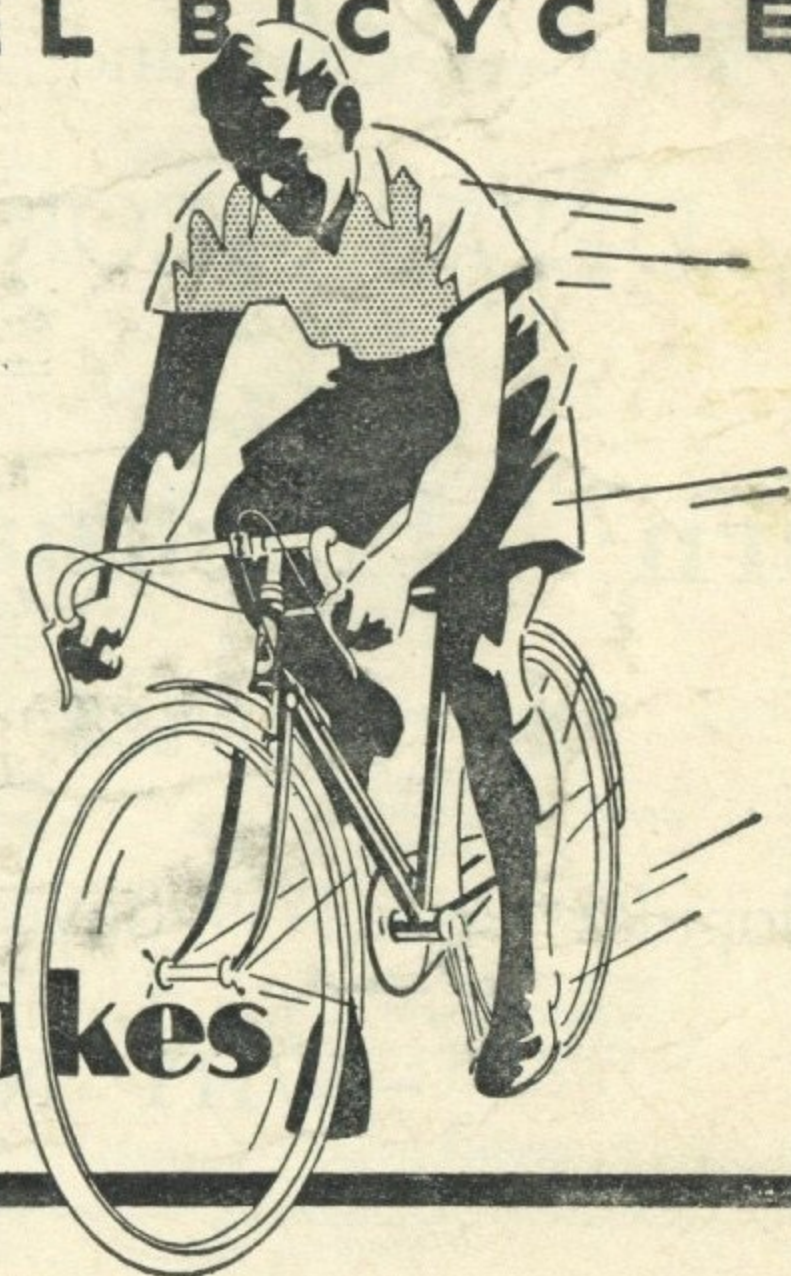
— the Raleigh is the answer to these questions. It will give you the finest possible cycle value because it is *superior even to the spokes*.

From **£5/10/-** Cash

OR EASY TERMS

Write for Catalogue

Superior
Even to the spokes



THE
HOUSE
FOR
ALL
INDOOR
GAMES

SEE SPECIAL
WINDOW DISPLAY
of
**BILLIARD
TABLES**
AND ACCESSORIES

THE
HOUSE
FOR
ALL
SPORTS
GOODS

A. G. Partridge & Co
PHONE 234 10-12 CHAPEL ST. LUTON