

LOOK OUT FOR THIS NUMBER ;

A GAUMONT
BRITISH
THEATRE**EMPIRE**

BARNSELEY.

CONTINUOUS
DAILY
FROM 1 p.m.ALL THIS WEEK
GRAND HOLIDAY PROGRAMME!**WILL HAY** in—
OH! MR. PORTER (u)

To-day, Tues., Wed.

PRINCESS

Next Thurs., Fri., Sat.

Victor McLaglen in
SEA DEVILS (a)Errol Flynn in
THE PRINCE & THE PAUPER (u)**Barnsley Football Club, Ltd.**
OFFICIAL PROGRAMME**MONDAY, DECEMBER 27th, 1937**
SEASON 1937-38. PRICE - 2d.

Published by the "Barnsley Express."

Barnsley Permanent Building Society
ADVANCES are now being made on security of house
property at **4½** per cent.Investing Contribution Share Accounts may be opened at any time.
ONE SHARE 2/6 per Week 10/10 per Calendar Month.
Interest 3 per cent and Bonus.**DEPOSIT DEPARTMENT.**This Department is now open for sums not exceeding £5,000.
INTEREST 3 PER CENT.All Interest is Tax free to Investors and Borrowers.
Head Office: 11, **REGENT STREET, BARNSELEY.**
Apply for PROSPECTUS. Telephone: 277

FAMOUS OAKWELL ALES



BREWED BY
THE BARNSELY BREWERY CO., LTD.,
OAKWELL BREWERY, BARNSELY
"Cannot be beaten"

Barnsley Football Club

LIMITED.

(Founded in 1887 by the Rev. Tiverton Preedy).

Directorate: Mr. G. Tomlinson (Chairman); Councillor J. Richards, J.P. (Vice-Chairman); Mr. W. Diggle, Mr. W. Foster, Mr. A. Fairclough, Mr. B. E. Gaunt, Mr. S. P. Harrison, Mr. J. W. Hirst, Mr. D. P. McKenzie, Mr. C. B. Moore, Councillor R. J. Soper, J.P., Mr. C. W. Squire.

Secretary-Manager: Angus Seed.

Registered Office: Oakwell Ground.

Telephone: Barnsley 267.

Members of the English Football League Second Division.

(Elected 1898-99 Season).

Midland Counties League. (Elected 1895).

Yorkshire Mid-week League.

Yorkshire League.

HONOURS' BOARD

English Cup Finalists, 1909-10; English Cup Winners, 1911-12.
Championships of Third Division (Northern Section) 1933-34;
Yorkshire Mid-Week League 1928-29; Midland Counties League 1901-2
1934-35, 1935-36, 1936-37.

West Yorkshire Cup Winners 1913-14; Sheffield and Hallamshire
Cup-Winners 1921-22, 1924-25, 1934-35, 1936-37; Sheffield Senior
Challenge Cup Winners 1929-30; Sheffield Invitation Cup Winners 1932-
33, 1933-34.

Record attendance: 40,245 v. Stoke, F.A. Cup Fifth Round, February
15, 1936 (Receipts £2,572).

Record receipts: £2,584 v. Preston North End F.A. Cup Third Round,
February 18, 1922 (Attendance, 36,881).

NEW SERIES, VOL. I No. 21.

Monday, December 27th, 1937

BOARD ROOM BULLETIN

We hope our readers will not consider we are too late in
extending to them cordial Christmas greetings.

We do so most heartily, although rather troubled by the
fact that we do not, at the time of writing, know whether
the Christmas fare our team has already served up has been
to your liking. Unfortunately, there were no grounds for
hoping for any sensational gift from Santa Claus. The
doubt about the fitness of Hunt, and the knowledge that
Harper was stricken down with influenza, made team-selecting
an anxious business, and there was every fear that we should
have to make many changes for the game at Luton on Christ-
mas day.

By now you will know all about it, and we can only
hope that the result has whetted your appetite for to-day's
game.

LUTON MEMORIES.

We have an especial welcome for Luton to-day, for they
are the team which raised the curtain on Second Division
football at Oakwell.

We opened the campaign, of course, at Lincoln, but our
first home match was with to-day's visitors. Then we are

associated with them in the fact that John McCartney, who had as much to do as anybody with the building up of Barnsley, came to us from them as a player. His playing career was ended by a broken leg, and then he took over the managership and pulled us through a very difficult time. He subsequently went back to Luton as manager.

Our more recent association with Luton is not so happy. In 1933 they knocked us out of the cup after playing a goalless draw at Barnsley.

FROM SOUTHEND.

Southend's programme on Saturday had much to say about their approaching cup-tie with us.

Here is some of it: "The name of Barnsley may not be very magnetic in the world of football, and many would have preferred a more fashionable club. But we are drawn at home and that is something to be thankful for. Allied to that privilege we have an excellent chance of going a step higher. These Yorkshire chaps are tough, we admit; but something more than mere doggedness and determination are needed to win football matches in these days. Unless Barnsley are proficient in the finer points of the game, their native gift of grit may not be sufficient to beat us on our own stronghold. The Yorkshire team is in a higher class, we know, but that counts for little when cup issues are at stake."

We now pause to take our breath.

SOME MORE.

Continuing to quote from the Southend programme: "We have had ex-Barnsley players in our ranks from time to time, and of these we recall the dour Tommy Sayles, Arthur Woodlands, Percy Beaumont, and Jimmy Curran, the latter one of the best 'middlers' of a ball we ever saw.

"He came to Southend late in his career. We wish we had had him at twenty. Much no doubt will be made of the Barnsley tradition and the past honours won in the competition, but it is a long way back from January 1938 to the doughty days of Dick Downs, Lillysoop, Tufnell and Co."

HADWENS' 2/- in the £ **SALE**
REDUCTION
NOW RUNNING!

Call in after the Match and see what HADWENS can do for you.
Try one of Hadwens **RAINGUARD COATS**

21/-, 25/-, 30/- 35/- to 63/-

2, 4, & 5, NEW STREET ——— BARNSELEY.

See OUTFITTING SALE WINDOW at No. 5.

It is, indeed, especially to the days of "Lillysoop." And we don't quite remember Arthur Woodlands, either.

LUTON'S DISTINCTION.

Luton Town is the oldest professional club in the South of England, for in 1890 an offer of five shillings per week was made to each of three local players, Frank and Harry Whitby, and Read.

At the end of that season it was decided to pay the whole of the first team, the agreed amount being two shillings and sixpence a week, with an extra sixpence for away matches. The following season the wages were doubled, and Julian, a half-back, was secured from Woolwich Arsenal, and became captain. He, of course, received a higher wage.

As a club they are two years older than Barnsley, being formed in 1885.

SYMPATHY.

Directors and players of the Barnsley F.C. desire to extend their deepest sympathy to Ernest Hine in the great affliction which has come upon him in the death of his daughter.

CUP-TIE TRIP.

As you will see from the Supporters' League Notes in this programme, it has now been possible to arrange an excursion train for the Southend match.

We are sure that a large number of our supporters will be desirous of taking advantage of the very reasonable facilities offered, and we urge them not to delay their applications for tickets for the match.

These may be obtained from the office on the ground: Prices 5s. and 3s. 6d. We are under an obligation to send our "unsolds" back in a few days. They can easily be disposed of in Southend.

THIS WEEK'S CAPTURE.

Since all the foregoing was written we have been able to complete negotiations with Blackpool for the transfer to us of their Scottish international centre-half, Phil Watson.

You will see, therefore, that we have not lost much time in re-investing the money we received for Nicholson, and more. We hope our supporters will take it as another indication that, far from wishing to part with players who we feel are necessary to build up our side to the required strength, we are all the time actuated by a desire to strengthen the team. Watson's immediate task is to fill the gap caused by the untimely illness of Harper, but after that we feel that his great experience as a full back should stand us in good stead.

We think our supporters will agree with us that our players now are of such a calibre that, could we depend on being always able to field our strongest possible side, we should yet attain and retain a very creditable place in the table, and have a creditable run in the cup competition.

CLARENCE HOTEL

SHEFFIELD ROAD
(opposite Alhambra)

Leeds & Wakefield Breweries'
FINEST ALES
WINES and
SPIRITS

Old and New Friends—Please Note:

'PHONE: 320

Proprietor: HARRY WAITE

GEORGE BOOKER

LTD.

THE HIRE GARAGE

★
SPECIALISTS

in
**PRIVATE
HIRE**
(Rolls Royce and
Daimler)

CARS

★

'PHONES: 584 and 420.
Day and Night

PUBLIC ADDRESS EQUIPMENT

Placed at the disposal of BARNSELY
FOOTBALL CLUB by . . .

THE ENGLISH and SCOTTISH JOINT
CO-OPERATIVE WHOLESALE SOCIETY
LTD.

the largest Growers, Blenders, Packers
and Distributors of Teas in the World.

CO-OP. TEA - *Drink it
Always*

TO-DAY'S VISITORS.

We are indebted to Mr. E. H. Pugh, of the "Luton News," Luton, for the following Pen Pictures of the Luton players:—

J. L. COEN (goal). Opened the season as the first team goalkeeper but was deposed by Dolman after seven matches. Gets the chance of another spell in the League side because of a cartilage injury to Dolman. A capable goal-keeper who is in his fourth season with Luton. A native of Glasgow, he had his first League chance with Clydebank, and afterwards played for Glasgow Celtic. He came to England to play for Guildford City, and then had a spell with Bournemouth from which club, Luton obtained his transfer. Has made nearly 100 League appearances for Luton. 5 ft. 10½ in., 12 st. 12 lb.

T. S. MACKEY (right back). Luton's longest service man. In his sixth season with the club, and playing better than ever. Came to Luton from Sheffield Wednesday as a centre half, but was converted successfully into a full back in which position he has played nearly all his games. Born at Cassop, Co. Durham, he began his professional career with Hartlepool United, and had three seasons with the Wednesday. 5 ft. 10½ in. 12 st. 7 lb.

T. S. SMITH (left back). Also converted from a centre half, which position he held in the Nelson and Rochdale teams for three seasons. Is a school teacher in Luton and went to Leeds Training College. Born at Higham, near Burnley, and played for them in his early days. Keen and accurate, was an ever present in the promotion side last season. 5 ft. 10 in. 12 st.

J. FINLAYSON (right half). Third season. Born at Thornliebank, Scotland, and played for his native village before going to Motherwell as an inside forward. He moved to Cowdenbeath and then to Clapton Orient where he became half back and then a full back. Made the right half position his own at Luton, and is one of the cleverest footballers in the team. 5 ft. 11 in. 12 st.

J. NELSON (centre half). Captain and tallest man in the team. Stands 6 ft. 1½ in., weight 12 st. 7 lb. Born at Chorley, and played for them in the Lancashire Combina-

ROYAL

Church St.



HOTEL

Barnsley.

BARNSELY BREWERY CO.'S FAMOUS ALES
HOT LUNCHEONS DAILY FROM 12 NOON TO 3 P.M.

W. SHUTT, Manager.

Headquarters: Barnsley F. C. Ltd.

TEL: 158.

OUR COMPETITIONS.

During the interval winning programme numbers will be announced over the microphone. Holders of programmes bearing corresponding numbers will receive gifts in the following order:

First Number—A seat on the Centre Stand for the next First Team Home Match.

Second Number—Two seats at the Empire Super Cinema.

Third Number—Two seats at the Pavilion Picture Palace.

Fourth Number—Two seats at the Theatre Royal.

Fifth Number—Two seats at the Globe Picture Palace.

Holders of winning programmes must produce them at the office before leaving the ground.

Get the best out of your Snaps . . .
by having **ENLARGEMENTS**

from

DENTON & CO. LTD.

SHEFFIELD ROAD, BARNSELY

THIS IS THE BEER YOU HAVE ALWAYS PREFERRED

You know your favorite brew when you taste it! We've tried no new-fangled packing methods for our beer . . . because our thousands of drinkers have always preferred it straight from its clean, clear bottle! Order a case to-day!



DRINK THE BEST — BEER
Try **CLARKSON'S FINE BITTER ALE**

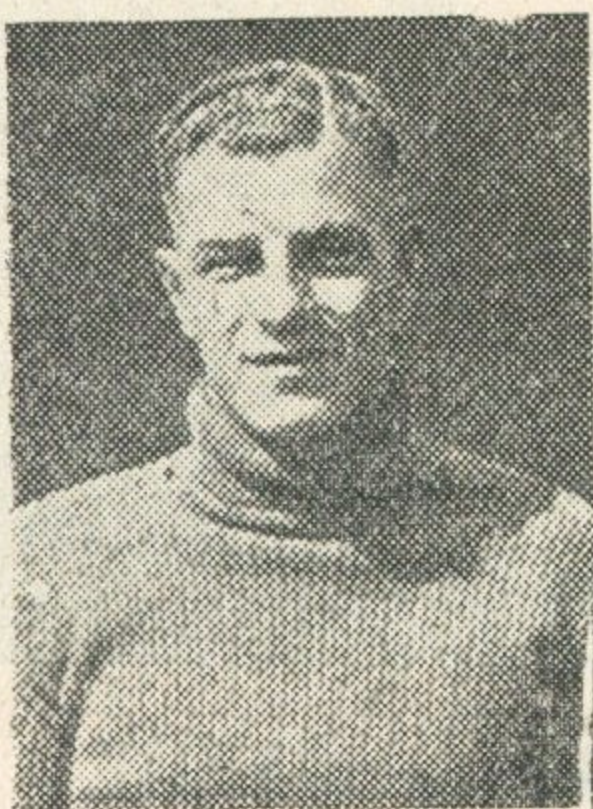
DRAUGHT AND BOTTLED
ALSO CELEBRATED OLD BEER.

tion. Preston took a fancy to him, and after distinguished service at Deepdale, was transferred to Wolves. Had three seasons at Molyneux before Luton paid a big fee for him. Was one of the big factors in Luton's promotion success. This will be his 99th League appearance for Luton.

W. J. FELLOWES (left half). Was born at Bradford, but his family moved to Tavistock, Devon, when he was very young. First club was Tavistock Town, and then Plymouth made him a professional. Had three seasons at Home Park before joining Clapton Orient, for whom he played at centre half. Took over the left half position at Luton, and has held it ever since. Is in business at Tavistock. 5 ft. 9½ in. 12 st.

A. G. DAWS (outside right). The sixth player to fill the outside right position this season. Was signed at a four figure fee from Crystal Palace just over a year ago as an inside right, but has since figured in every position in the forward line. Was tried on the right wing at Plymouth a month ago with outstanding success. Is the hardest shot in the team, and gained a bag of goals whilst with Northampton, for whom he played at centre forward, and Crystal Palace. In 1935-36 season scored 38 goals for the Palace, and figured in an English International trial match. 5 ft. 9½ in. 11 st.

J. PAYNE (inside right). Holds the record for scoring the most goals in a match. Found the net ten times against Bristol Rovers on Easter Monday, 1936, the first time he had played centre forward in the League team. Broke the Southern Section scoring record last season with 55 goals, and was the most sought after centre forward in the country. Toured Scandinavia with the England team last May, and scored twice against Finland. Has been troubled by illness this season, but is now back at something like his best. Is proving a great worker at inside right. Born at Brimington Common, and played for Bolsover Colliery. Is a fine



all round cricketer, and is professional for Bedfordshire. 5 ft. 10½ in. 12 st.

E. J. VINALL (centre forward). Signed from Norwich City in October, and regarded as one of Luton's shrewdest captures. Cost a big fee, but has proved that he is worth every penny of it. Has pulled the forward line together, and is always a danger near goal. Since he joined the club, has played in ten matches, and only one has been lost. In four seasons with Norwich, missed only four games. Was previously with Sunderland and Folkestone. 5 ft. 10½ in. 12 st. 2 lb.

F. ROBERTS (inside left). Ever present in last season's promotion team. Fourth season with the club, and is a grand club player. Born at Birmingham, and played for Smethwick Highfield and Piggott's Works before turning professional with Birmingham. Gained a place in the first team at centre forward in a few weeks, and kept it until Luton persuaded the St. Andrew's club to part. Became an inside left, and is a great forager. 5 ft. 8 in. 11 st. 7 lb.

G. STEPHENSON (outside left). Born at Stillingham, Durham. His first professional club was Durham City, but he went to Aston Villa, and remained there for three seasons. He was mainly in the reserve team, and Luton took him four seasons ago. Has made 130 League appearances for the Town, and is a great match-winner on his day. Fast and clever, he and Roberts make a fine wing.

J. LOUGHRAN (wing half). Another school teacher. Born at Consett, Co. Durham, he first played for Medomsley Juniors. Went to Dudley Training College, and gained his place in the team there. Birmingham made him a professional, and he played in 35 First Division matches for them. Won junior "Caps" against Scotland and Ireland in 1935. Joined Luton from Birmingham during the close season. 5 ft. 6 in. 11 st.

C. FERGUSON (wing or inside forward). Signed from Notts County during the close season as an inside forward. Has had three games in the first team at outside right, and played very well there. Gained a Scottish Junior International "Cap" whilst playing for Benburb Juniors, and afterwards went to Middlesbrough. 5 ft. 8 in. 11 st. 2 lb.

W. REDFERN (inside forward). Secured from Newry Town last September as a centre forward, and scored two goals on his first appearance in the League team. Is one of the cleverest ball players on the books, and Luton are expecting big things from him. Is a Welshman, and played in an Amateur International trial match whilst with Liverpool Marine. Had four seasons with Newry, and was a consistent goalscorer. 5 ft. 11½ in., 12 st.

OUR SCORE BOARD

HALF TIME SCORES

SCORE BOARD NO. 1

(RED FLAG)

A	ARSENAL		I	PRESTON	
B	BLACKPOOL		J	PORTSMOUTH	
C	BIRMINGHAM		K	STOKE	
D	LIVERPOOL		L	GRIMSBY	
E	BRENTFORD		M	WEST BROMWICH	
F	MANCHESTER CITY		N	WOLVERHAMPTON	
G	CHARLTON		O	BRADFORD	
H	CHELSEA		P	ASTON VILA	
	DERBY COUNTY			CHESTERFIELD	
	BOLTON			BLACKBURN ROVERS	
	EVERTON			COVENTRY	
	LEICESTER			SHEFFIELD UNITED	
	HUDDERSFIELD			FULHAM	
	SUNDERLAND			BURNLEY	
	MIDDLESBOROUGH			MANCHESTER UNITED	
	LEEDS UNITED			NOTTS. FOREST	

SCORE BOARD NO. 2

(WHITE FLAG)

A	NORWICH		I	HALIFAX	
B	WEST HAM UNITED		J	SOUTHPORT	
C	SHEFFIELD WED.		K	HULL CITY	
D	PLYMOUTH ARGYLE		L	DARLINGTON	
E	STOCKPORT COUNTY		M	LINCOLN	
F	NEWCASTLE		N	PORT VALE	
G	SWANSEA		O	OLDHAM A.	
H	SOUTHAMPTON		P	NEW BRIGHTON	
	TOTTENHAM			ROTHERHAM	
	BURY			CHESTER	
	ACCRINGTON			TRANMERE	
	ROCHDALE			BRADFORD CITY	
	CREWE A.			WREXHAM	
	HARTLEPOOLS			BARROW	
	DONCASTER			YORK	
	CARLISLE			GATESHEAD	



SHEFFIELD WEDNESDAY

versus

BURY

SATURDAY, 8th JANUARY, 1938

Excursion Buses will leave Barnsley (Queen's Rd.),
at 1-15 p.m. and run Direct to Sheffield
(Hillsbro' Ground)

FARE 2/6 RETURN

DONCASTER

versus

SHEFFIELD UNITED

SATURDAY, 8th JANUARY, 1938

Buses leave Barnsley (Queen's Road) at 1-0 p.m.
and run Direct to Doncaster (Belle Vue Ground)

FARE 2/6 RETURN

BILLIARDS

Play under ideal conditions at

PARKER'S BILLIARDS PARLOUR

(THE EMBASSY HALL)

TABLES ALWAYS IN PERFECT
CONDITION!

Corner of

Eldon St. & Regent St. South

Three doors from "The Empire"

THE GLOBE PICTURE HOUSE

Matinees Daily (Friday excepted) at 3 p.m.
Continuous from 6-30 p.m. Sat. Twice Nightly
PHONE: 467.

MONDAY, DECEMBER 27th,
FOR SIX DAYS

Big New Year Fun Programme.

MARX BROTHERS

MAUREEN O'SULLIVAN,

ALLAN JONES in

A DAY AT THE RACES

Take top "Marx for this one," the
biggest comedy of the season.

BARNSELY BRITISH CO-OPERATIVE SOCIETY, LTD.

EVERYTHING FOR FOOTBALL

HOCKEY, GOLF, BADMINTON, TABLE TENNIS,
AND ALL WINTER SPORT, AT

THE B.B. SPORTS DEPOT

THE SPORTS CORNER

WELLINGTON STREET - - BARNSELY

Official Outfitters to the Barnsley Football Club.

BARNSELY (Red Shirts, White Knickers)

DIV. II

R

1 Binns

L

2 Bokas

3 Shotton

4 Jones

5 Watson

6 Logan

7 Fisher

8 Barlow

9 Hunt

10 Asquith

11 Lang

Referee:

G. DUTTON
(Warwick).



Linesmen:

Blue Flag:
D. SKELTON
(Ramsbottom)

Red Flag:
W. MARTIN
(Leeds)

12 Stephenson

13 Roberts

14 Vinall

15 Payne

16 Dawes

17 Fellowes

18 Nelson

19 Finlayson

20 Smith

21 Mackey

L

22 Coen

R

LUTON TOWN

(White Shirts, Black Knickers)

Alterations will be announced on the Board

SALES and SERVICE
HIRE PURCHASE
INSURANCE

Eldon St.

EYRE BROS.

(Barnsley) Ltd.

Phone 61

Private Hire Service

AUSTIN
STANDARD
VAUXHALL, ROVER

Peel St. Showrooms

A New Year's Resolution!

TO TRADE WITH

HORSFIELDS

THE PIONEERS
OF CHEAP PRICES



THE FIRM WHO MARK
EVERY ARTICLE THEY
SELL IN PLAIN
FIGURES AND WHO
SELL ALMOST EVERY-
THING EXCEPT FOOD.



LOOK FOR THE
OUTSIDE CLOCK
IN

SHEFFIELD ROAD
BARNSELY

GOAL SCORERS TO DECEMBER 24th						FIRST TEAM APPEARANCES (To December 20th)			
	Div.	Mid.	"A"	Eng.	Other				
	II	Lge.	Team	Cup	Comps.				
Hunt	10	—	—	—	2	Binns	17
Asquith	5	—	—	—	—	Williams	14
Hine	5	1	—	—	—	Bokas	18
Bullock	3	—	—	—	1	Logan	20
Fisher	1	4	—	—	2	Harper	20
Logan	1	—	—	—	—	Jones	9
Barlow	1	—	—	—	1	Fisher	10
Bray	2	3	10	—	—	Hine	13
Gallacher	1	8	—	—	2	Hunt	15
Larkin	—	8	11	—	—	Asquith	15
Brewer	—	1	3	—	3	McArdle	7
Nicholson	—	1	1	—	—	Ives	4
Hamill	—	6	—	—	—	Bullock	13
Barlow	—	3	—	—	—	Gallacher	4
Hinsley	—	1	—	—	—	Nicholson	1
Trevitt	—	1	1	—	—	Barlow	9
McArdle	—	1	2	—	1	Ellis	3
Curtis	—	3	3	—	—	Shotton	14
Wooffinden	—	1	6	—	3	Lang	6
Lang	—	1	—	—	—	Bray	6
Jones	—	—	1	—	—	Hamill	2
Glover	—	1	1	—	—				
Myers	—	—	2	—	—				
Bokas	—	—	1	—	—				
Thompson	—	—	1	—	—				
Gebbie	—	—	3	—	—				
Ferrier	—	—	1	—	—				
Opponent	—	—	1	—	—				
Total	29	44	48	—	15				

Kick-off *the day*
Right

Enjoy your Breakfast

To be certain of doing this tell your wife to buy her Bacon at

Guest Ltd.

BARNSELY'S PREMIER GROCERS

The Noted Store for—

**HARRIS'S WILTSHIRE BACON
S. & W. CANNED FRUITS
SHIPHAM'S GLASS TONGUES**

Guest Ltd. "The Grocers"

22, MARKET HILL - - BARNSELY

Phone : 49.

Established 1765

ROUND THE FOOTBALL WORLD

By Legislator.

It should be understood that the views expressed by our contributor are not necessarily those of the directorate of the Barnsley Football Club.

There is talk of a Britain v. the Rest of the World International.

The British team would be composed of the "star" players of England, Scotland, Ireland and Wales and their opponents would be the high lights of European football. No doubt such a game would draw a crowd, but what lesson would it teach us? The British team would inevitable be one of compromise, for I cannot conceive that the international selection committee of the four countries would be in a unanimous agreement about the selected side.

In Europe an even more unhappy state of affairs would be created, and I fear some serious international crisis would develop before the teams were selected. It seems to me to be a case for the Non-Intervention Committee.

NEW POLICY AT HIGHBURY?

The number of players who have recently been transferred by Arsenal has set people wondering whether a new policy is being pursued at Highbury.

But Mr. George Allison has made clear a position which at some time or other worries most clubs. There is always a great shout from supporters when a player is transferred, as if it was simply a matter of interest to the spectators and the club management. Supporters are inclined to leave out of consideration entirely the feelings of the player. A player who cannot get his place in the side simply because there is somebody as good as him occupying it, cannot be blamed if he seeks a move when he sees the door of promotion to the League side closed to him.

Clubs are not being fair to players if they keep them season after season in the reserve side and refuse to let them try their wings elsewhere. I suspect that it is this consideration for the player which has led to so many Arsenal transfers lately.

PLAYERS IN PICKLE.

In addition to all that I have a feeling that a player can play below his class too long.

There is a vast difference between the standards of football in the respective competitions in which most first and second League teams play, and a player who is qualified for a place in the senior side does not always improve by being constantly played in an inferior competition. He is certainly doing himself more good there than if he were left out altogether, but my point is that a player should be given a chance to move on to another club if the prospects of him getting into his own first team appear too remote.

I am not, of course, referring to youngsters who are developing, but to matured players fit for first team honours.

CHRISTMAS CRACKERS.

Harold Fleming (Swindon) and Arthur Bridgett (Sunderland) used to decline, on religious grounds, to play on Christmas Day.

Frank Swift, Manchester City's goalkeeper, made his League debut on Christmas Day 1933. Has he been able to complete four years of uninterrupted service there?

Christmas Day birthdays: George Henson, Bradford City; Albert Clarke, Birmingham; Edmund Kilshaw, Bury, and William Wright, Reading.

Few wingers in Football League history have equalled the record of Eric Houghton on view here last week, who needs only three more goals to complete an individual double-figure total for the ninth successive season.

Middlesbrough have on their books six players who were recruited from the same amateur team—South Bank East End. They are: Nash (goal), Hardwick (back), McCabe and Shepherdson (half-backs), and Fenton and Hardy (forwards).

Huddersfield have been awarded eight penalty kicks already this season.

James Hampson (Blackpool) is now in the 290's goal-scoring class and before the end of the season is expected to join the 300 circle of Dixie Dean (Everton) and George Camsell (Middlesbrough).

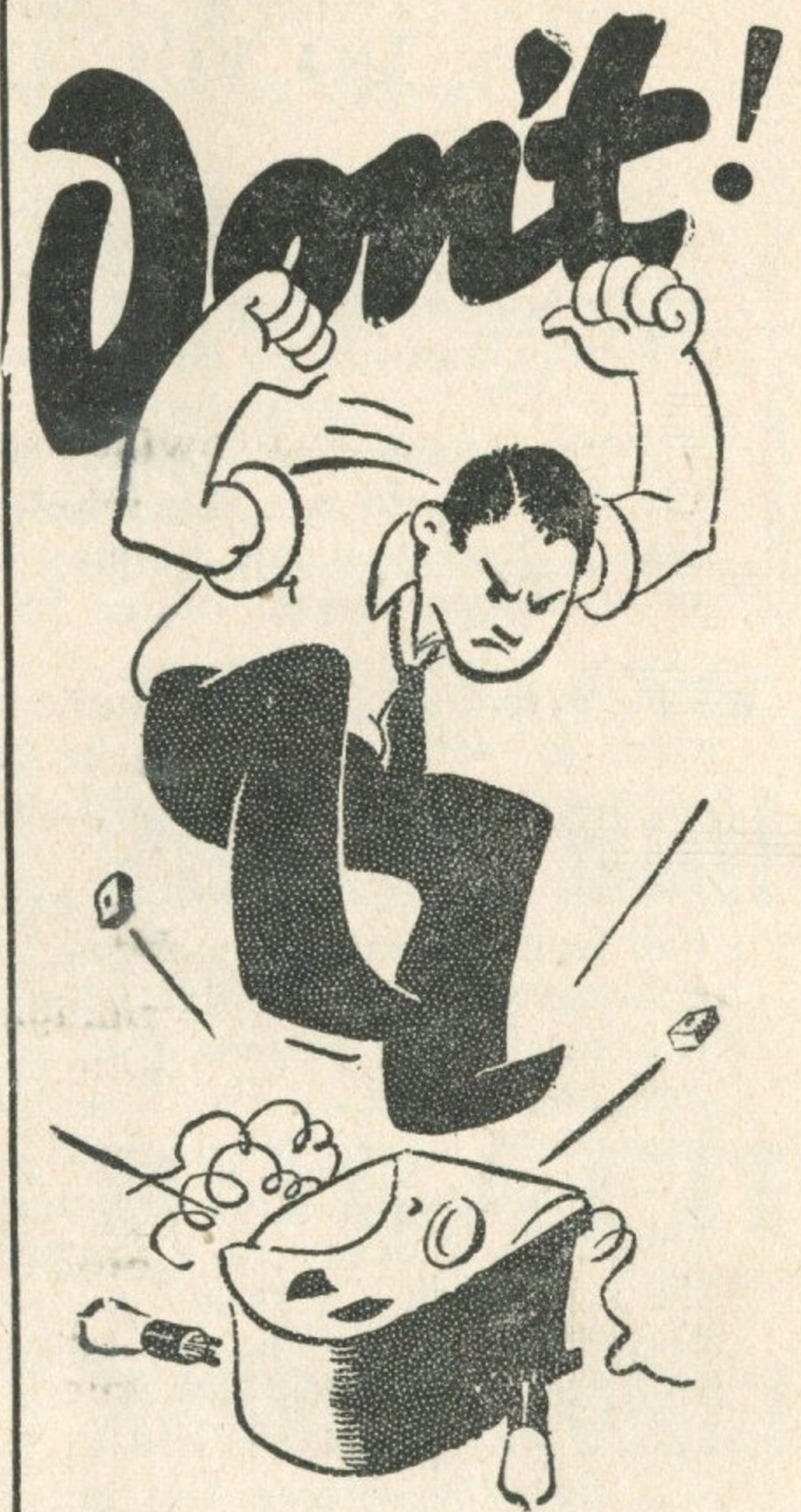
PRINTING!

Barnsley Express

Regent Street
South ———

**"The Modern
Printers"**

'PHONE 2306



WE WILL TAKE IT IN PART
EXCHANGE FOR A . .

**1938 MODEL
RADIO**

SEE OUR WINDOWS!
LARGEST SELECTION
IN TOWN

TAYLORS

"Radio House,"

PEEL SQUARE

Phone: BARNSELY 1045.

REFEREES' CORNER.

DO YOU DISAGREE ?

At this season of "Goodwill toward men" may I plead for a little of that goodwill to be extended towards the referee. He is honestly trying his best, even when he gives a decision which is contrary to your opinion.

Sometimes you disagree with a referee when you don't. Or, you would not disagree if you knew what his decision was. Both you and he may be right according to your respective observations of the facts.

When an otherwise quite sensible official gives a decision that, to you, appears to be absurd, please, before you get annoyed, be sure that you know exactly what his decision is.

Let me quote a recent example. A winger centred the ball from almost the goal-line. His centre forward, who was on side, got past the defending back and headed the ball into the net. The referee gave a free-kick against the forward and not a goal. The spectators **assumed** that the forward had been wrongly adjudged off-side, and loudly gave the "ref" the bird. Had the decision been off-side the referee would have deserved it because 1. the forward was behind the ball when it was last played, and 2. he certainly had two opponents **nearer** their goal-line than he was, when the ball was last played.

But, the referee had **not** given him off-side. He had rightly given a free kick against him, under Law 9, for **pushing** the full back out of the way. Had the spectators known that, few of them would have disagreed. I could quote many other instances of similar mis-understandings.

Mind you, no decent referee objects to **criticism**, which can be helpful, but criticism and **abuse** are not quite the same thing.

However, on behalf of all referees and linesmen, I hope you all, including our loudest voiced critics, are having a very good Christmas, and that you will have a really Happy and Prosperous New Year.

To referees, I send greetings. May all their matches be clean, hard games, with no "inquests."

To the Reds of Barnsley, Good Hunting! May you also have good, clean, hard games, and may you win by virtue of playing the better and cleaner football. For 1938, you can be sure of a good referee at Wembley.

The HEATING and HOT WATER INSTALLATION
in the New Dressing Rooms at Oakwell

executed by

PLUMBER
and
ELECTRICIAN

A. BRAY

Tel : 573

ESTIMATES
FREE. . . .

**MOUNT STREET
BARNSELY.**

GAS, STEAM
and
HOT WATER
FITTER

After the Match

**Central
Hall**

DONCASTER ROAD

18 Full Size Tables

1/- per hour

Billiards or Snooker.

TO-DAY!

WRESTLING

at the

Public Hall

BARNSELY

at 7-30. Doors open 6-30 p.m.

One Hour, 2/3 Falls, Points or K.O.

Terrific Challenge for £25 a Side.

BORATTI

(Anglo-Italian). 15 stones, 5 lbs. versus

HIS CHALLENGER

MAURICE GOMEZ

14 stone champion of Martinique.

PRICES OF ADMISSION :

4/-, 3/-, 2/- & 1/-. Boys 6d.

BOOK YOUR SEATS NOW

S. WORMALD & SON

EVERYTHING
for
SMOKERS.



Try Our Special
CHEWING
TWIST
9d. per oz.

PHONE : 604

9,

CHEAPSIDE

PHONE : 604

WERE VILLA LUCKY ?

(By a Critic).

Mr. James Hogan, the Aston Villa manager, disagrees with those critics (and, for once, they seemed a unanimous chorus) who said that the Villa were lucky to win at Barnsley.

He sent what is described as "an explanatory letter" to the Press on the subject :

And this is what he wrote :

'Games are won and lost for different reasons. Sometimes it may be weakness, or brilliance, of one attack or defence, or there may be other reasons.

"Admitted at the same time that luck plays a part, the conditions at Barnsley last Saturday were appalling. The ground was like a skating rink, and the Villa were badly handicapped in that they have a big set of men, at least as far as the defence is concerned.

"On the other hand conditions suited Barnsley whose players are of small physique, and it was much easier for them to keep their feet.

"In the first 45 minutes, the Villa tried to play football, and the goal scored was the result of a brilliant attack and the sheer persistency of our centre-forward. There was an element of luck about it, but the approach work had been brilliant.

"At half-time, owing to the conditions, and seeing that we were a goal to the good, we decided to change our tactics. It was of no earthly use trying to play scientific football, so we decided to concentrate more on defence, make occasional raids on Barnsley goal, but to try and hold what we had.

"Naturally, these tactics put the home team more on attack, and for the last 45 minutes Barnsley were certainly on top.

"Still, we must give the greatest praise to the Villa defence for the way they played to orders and won the match. There was no luck about the great display of Biddlestone, Cummings, Callaghan, Allen, etc. during the second half.

"It was great defensive football under adverse conditions and according to plan.

"I consider that every player in the Villa side deserve a pat on the back for a triumph under the most trying circumstances."

Well, what do you make of that ? Here is a manager who concedes that Barnsley were "certainly on top for the last 45 minutes" and that there was "an element of luck" about his side's goal, and then, presumably, disagrees with people who, on the same facts, say that Villa were lucky to win !

What other possible verdict could be returned ?

PAGES FROM OUR HISTORY

The object of this series of articles is not to detail formal history of the Club, but to throw a few sidelights—grave and gay—on our fifty years journey.

We turned over a scrap-book the other day to some more modern pages in our history than those we had previously glanced at, and recaptured a match which must be familiar to many who are present this afternoon.

During the War the Town Clerk of Barnsley (the late Mr. W. P. Donald), who afterwards became Chairman of the Club, made a suggestion that our then team should play a team of our past players.

The "Past" team was :

T. Thorpe (Northampton), A. Taylor (York City), G. Stacey (Manchester City), R. Glendenning (Bolton Wanderers), T. Boyle (Burnley), G. Utley (Sheffield United), G. Travers (Manchester United), G. Lillycrop (Bolton Wanderers), E. Gadsby (Glossop), W. Palmer (Everton) and Alf. West (Notts County).

Our own team was : Cooper, Downs, Bethune, Barson, Rooney, Wigmore, Donkin, Fletcher, Halliwell, Tuffnell, Griffin.

The match was witnessed by 5,700 people and produced £120 for the cause.

Travers and Palmer (2) scored for the winners and Fletcher for the losers.

In the first half Cooper had to leave the field to have an essential garment repaired, and in his absence Downs went in goal. Nobody, however, had officially notified the referee (the late Mr. Percy Sant) of the change, and when Dicky handled he awarded a penalty !

George Utley was, however, in sympathetic mood, and seemed to place the ball deliberately wide.

NEXT MATCHES AT OAKWELL.

SATURDAY, JANUARY 1st

BRADFORD

DIVISION 2

Kick-off 2-30

OUR PLAYING STAFF.

GOAL KEEPERS					Height ft. ins.	Weight st. lbs
C. H. Binns (Todmorden)	6 0	13 0
T. Ellis (Coxhoe, Durham)	5 10½	12 4
F. Swallow (Wombwell)	5 11	12 0

BACKS					Height ft. ins.	Weight st. lbs
R. Shotton (Witton Gilbert)	5 9	12 3
E. Williams (Maesteg, S. Wales)	5 8	12 0
A. E. Ives (Newcastle-on-Tyne)	5 11½	12 7
H. Ferrier (Ratho, Scotland)	5 11	12 7
E. Lacey (Goldthorpe)	5 8	10 0
F. Humble (Thurscoe)	6 0	12 2

HALF-BACKS					Height ft. ins.	Weight st. lbs
G. W. Logan (Horden)	5 7½	11 4
B. Harper (Gawber)	5 11	13 7
F. Bokas (Bellshill, Scotland)	5 8	12 10
L. Jones (Wombwell)	5 9	11 5
A. Glover (Barnsley)	5 9	10 3
T. W. Robinson (West Rainton, Durham)	6 0	13 3
G. Hinsley (Sheffield)	5 9½	11 2
J. W. Wheat (Worksop)	5 11	11 7½
A. Horner (Shafton)	5 7	10 2
A. Gebbie (Muirkirk, Scotland)	5 10	12 10

FORWARDS					Height ft. ins.	Weight st. lbs
F. W. Fisher (Barnsley)	5 6	10 7
E. W. Hine (Barnsley)	5 7½	11 1
D. A. Hunt (Shipton, Hants)	6 0	13 0
E. Asquith (Painthorpe)	5 10	11 7
E. Bray (Barugh Green)	5 11	12 4
H. Barlow (Kilnhurst)	5 8	11 0
F. Gallacher (Ellerslie, Scotland)	5 9	11 8
R. S. Woffinden (Kilnhurst)	5 10½	10 9
A. Hamill (Cowdenbeath)	5 10	12 3
G. F. Bullock (Birmingham)	5 5	10 4
E. Larkin (West Hartlepool)	5 10½	12 6
W. J. Trevitt (New Herrington)	5 6	10 1
A. Brewer (Askern)	5 7	11 0
J. Lang (Dumbarton)	5 8	11 6
J. H. Myers (Barnsley)	5 1½	11 7

PHONE -
331



and
164

ALBERT HIRST

ENGLISH and SCOTCH MEAT PURVEYOR

Celebrated PORK PIES

DELICIOUS FOR ANY MEAL.

HOTELS AND CLUBS SUPPLIED

CHOICEST DAIRY-FED PORK

25 & 26, Cheapside, Barnsley.

*Buy a
guaranteed
Used Car*

WE HAVE THE LARGEST
SELECTION OF USED CARS
IN THE TOWN AT PRICES
TO SUIT YOUR POCKET.

CALL and SELECT
YOURS

About that new car -

We can supply all the leading makes.

Let us arrange a Demonstration in the New-Opel

SMART AND BATTY

UPPER SHEFFIELD ROAD & DONCASTER ROAD,
BARNSELY.

SUPPORTERS' LEAGUE CALLING

We should like to extend to the Directors, Management and Players the seasons greetings of our supporters.

It is not anticipated that there will be any alteration from the following arrangements which we have made with the London and North Eastern Railway Co. in connection with our cup-tie with Southend, in response to requests from our supporters who wish to see the match.

OUTWARD

Barnsley (Court House) dep. 7.43 a.m.

London (King's Cross) arr. 11.20 a.m.

Special through coaches attached to London.

London (Liverpool St.) dep. 11.56 a.m. 12.18 p.m.

Southend. arr. 1.16 p.m. 1.26 p.m.

Passengers make their own way from King's Cross to Liverpool St. preferably by tube, a journey of about ten minutes.

RETURN.

Southend. dep. 4.49 p.m. 5.3 p.m. 5.30 p.m. 5.47 up to 8.9.

London (Liverpool St.) arr. 6.7 p.m. 6.33 p.m. 6.53 p.m.
7-23 up to 9.42.

London (King's Cross) dep. 10.45 p.m.

Doncaster arr. 2.11 a.m.

Barnsley arr. 3.0 a.m.

Special through coaches to Barnsley.

The Return Fare from Barnsley to Southend and back is 15/9d.

The London Midland and Scottish Railway Co. are also offering bookings at the same fare on their ordinary services.

We would ask those who intend to make the journey to obtain their tickets early so that arrangements may be made for the number of special coaches required.

Tickets and further information may be obtained from Dean and Dawson Ltd., Eldon Street, Barnsley.

The Penny-on-the-ball receipts at the Aston Villa match were £7 2s. 2d., Ticket No. 15404 being held by Miss Mabel Squire, 60 Hope Street, Barnsley.

WAKE UP YOUR LIVER BILE

without Calomel—and you'll jump out of bed in the morning full of vim and vigour.



THE LIVER should pour two pints of bile into your bowels daily. If this bile is not flowing freely, your food doesn't digest, decays inside you. Gas bloats you up. You get constipated. Laxatives help a little, but a mere bowel movement doesn't get at the cause. It takes those good old CARTERS BRAND LITTLE LIVER PILLS to get these two pints of bile flowing freely—harmless, gentle, yet amazing in making bile flow freely.

Ask for CARTERS BRAND LITTLE LIVER PILLS. Stubbobly refuse anything else. 1/3 and 3/4, or trial packages for 1d. TUNE-IN to Radio Luxembourg, Sundays at 11-15 a.m.; Mondays 8-45 a.m.; Thursdays 8-30 a.m. Radio Normandy—Sundays 2-45 p.m.; Mondays 9 a.m., Tuesdays 10-15 a.m.; Thursdays 10-15 a.m. (except 1st Thursday each month).

After taking
Carters Little Liver Pills

Transmission arranged through the International Broadcasting Company Limited.

CHENNEL'S BARS AND WINE LODGE

WINES
from the
WOOD.

BASS'S ALE
ON DRAUGHT

QUALITY
VALUE
SERVICE!

CHENNEL'S BARS
WELLINGTON STREET
BARNSELY

CHEAP TRIPS by L.M.S.

FROM BARNSELEY

SPECIAL EVENING EXCURSION SATURDAY, JAN. 1st. TO BRADFORD

1/1

EXCHANGE — DEPART 5.35 p.m.

RETURN FROM BRADFORD (EXCHANGE) at 11-30 p.m.

Thursday, December 30th and Saturday, January 1st
6-18 a.m. Court House LONDON (15/9)

Friday Night, December 31st.

10.3 p.m. (Court House) CARLISLE (11/-); DUMFRIES
(12/6); KILMARNOCK (15/9); GLASGOW (16/3);
GREENOCK (17/3); GALASHIELS (14/-); EDINBURGH
(15/9).

For full particulars see handbills at L.M.S. Stations and Agencies or
Telephone Barnsley 76