



LUTON TOWN FOOTBALL ·AND· ATHLETIC CO. LTD.

OFFICIAL
JOURNAL

PRICE 2d



League—Division II

December 25th, 1937.

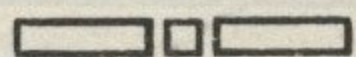
LUTON TOWN v. BARNSELEY

“TRUE-FORM”

THE FINEST FOOTWEAR
IN THE TOWN



BUY DIRECT FROM THE MAKERS



LOCAL BRANCH:

44, GEORGE STREET

Head Office and Factories: NORTHAMPTON

*Insist upon the
Building Materials for
your new house coming from*

POWDRILL'S

BUILDERS' MERCHANTS
COAL and COKE MERCHANTS
BRICK MANUFACTURERS
SAND & GRAVEL QUARRY OWNERS

GEORGE POWDRILL & SON LTD., 1, 3 & 5, HITCHIN ROAD, LUTON
TELEPHONE 2073 (2 Lines)

£10,000 MENTIONED

*This is a term often used
in the transfer of players.*

WHY NOT MENTION TO YOUR
FRIENDS YOU ARE
COMING TO

CHAPEL STREET METHODIST CHURCH

TOMORROW at 10.45 a.m. and 6 p.m.

Luton Town Football and Athletic Co.,



Telephone No. 3151-2.

LIMITED

President: Alderman Harry Arnold, C.A., J.P.

Directors:

Chairman: Alderman Chas. Jeyes, C.C.

Messrs E. Hugh Woods, (*Vice-Chairman*) Frank J. Andrews, Stanley H. Godfrey, C.A.,
Horace S. Hewson, Percival G. Mitchell, Henry Richardson, C.C., Philip W. Wright.

Team Manager: Mr. E. Liddell.

Secretary: Mr. A. E. Wickson.

Honorary Medical Officer: E. J. Crarer, M.B., Ch.B.

Honorary Solicitors: Messrs Machin & Co., 17-19, George Street West, Luton.

CLUB NOTES by "Hatter"

FIRST of all I wish everyone, whether they are in the habit of reading these notes or otherwise, whether they agree with what I write or are my strong critics, whether they are present or absent this afternoon, a very happy Christmas and more prosperity in the coming New Year. I hope everybody, like Scrooge of old, has in some way, whether large or small, made this Christmas more joyful for someone less fortunate than themselves.

Now to return to football. In an adjoining column you will find an advertisement relating to the Cup Tie at Scarborough on the 8th January next. Now for the information of supporters of the Club who intend making the journey, I have to state that the accommodation at the Scarborough ground is on the small side and although we have applied for our 25% quota of tickets, this in all only amounts to 46 at 4/- each and 76 at 3/- each, a total of 122 seats. A note has also been received from the Scarborough Club to the effect that their tickets for the 4/- stand have already been over applied for and requesting us to return any of our quota that we are unable to sell. The Directors earnestly appeal to our supporters who are desirous of obtaining tickets to apply for same immediately. They can be obtained at the office, 70-72, Kenilworth Road, daily (Sunday excepted) between the hours of 9 a.m. and 5 p.m.

This afternoon we welcome Barnsley and once more renew acquaintance with Mr. Angus Seed, their secretary-manager, who was previously with Aldershot. Barnsley are no strangers to us for it is only a year or so ago that we met them in the F.A. Cup, a goalless draw resulting at the first encounter, whilst in the replay at Luton we were successful by two clear goals. After this game we went to the sixth round, being ultimately defeated at Goodison Park. The "Stiffs" visited Coventry City, the present Combination champions, this morning and the "Bantams" return the compliment on Monday. This should be a first class game for at the moment of writing our visitors have emulated the performance of their seniors, having only lost two games so far this season. Last term they inflicted a five nil defeat on us at Luton, so we have got something to

wipe out. I have no doubt also that this game with Coventry will provide us with an opportunity of running the rule over our recently acquired additions from Gainsborough, Bob Carte and Sam Mayberry. I am sure we all wish them a happy sojourn in Luton.

F.A. Cup - Round 3

SATURDAY, 8th JANUARY, 1938.

SCARBOROUGH

LUTON TOWN

Kick Off - 230 p.m.

Reserved Centre Stand 4/- (Inc. tax)

Reserved Wing Stand 3/- (Inc. tax)

Tickets for above classes of admission are obtainable at the Secretary's office, 70-72, Kenilworth Road, between the hours of 9 a.m. and 5 p.m. (Sunday excepted).

Early application is advisable as the allotment is strictly limited.

*The Editor wishes Supporters
a Merry Xmas and
a Happy New Year*

No 885

ATTENDANCE BAROMETER

						1936			1937			
						£	s.	d.	£	s.	d.	
1936		1937										
		Aug. 28	Southend United Reserves				7346	167	0 3	
Aug. 29			Southend United	14353	705	11 1				
Aug. 31			Southend United Reserves	3469	89	11 9				
		Sept. 1	Aston Villa				25349	1299	14 4	
		Sept. 4	Manchester United				20610	994	1 2	
Sept. 5			Portsmouth Reserves	6048	161	8 11				
Sept. 7			Walsall	11043	486	8 0				
		Sept. 8	Clapton Orient Reserves				4823	93	6 7	
		Sept. 11	Chelsea Reserves				7725	175	7 7	
Sept. 12			Crystal Palace	13790	707	18 3				
		Sept. 18	Tottenham Hotspur				23788	1235	7 8	
Sept. 19			Tottenham Hotspur Reserves	5659	150	14 11				
Sept. 21			Leicester City Reserves	1585	39	18 11				
		Sept. 22	Leicester City Reserves				3626	69	19 2	
		Sept. 25	Queens Park Rangers Reserves				6558	142	1 11	
Sept. 26			Reading	16378	820	18 0				
		Oct. 2	Bury				17650	821	19 0	
Oct. 3			Queens Park Rangers Reserves	3558	91	13 10				
		Oct. 9	Brighton and Hove Reserves				5236	107	4 10	
Oct. 10			Bristol City	13255	629	1 7				
		Oct. 16	Swansea Town Reserves				6592	141	16 2	
Oct. 17			Watford	20569	1071	17 1				
		Oct. 23	West Ham United				17757	897	18 10	
Oct. 24			Southampton Reserves	4120	107	15 2				
		Oct. 30	Reading Reserves				5571	116	1 10	
Oct 31.			Bournemouth	11305	591	16 2				
		Nov. 6	Blackburn Rovers				16776	818	16 6	
Nov. 7			Fulham Reserves	3080	80	12 3				
		Nov. 13	Millwall Reserves				6929	149	18 5	
Nov. 14			Bristol Rovers	12784	599	6 4				
		Nov. 20	Chesterfield				17088	802	11 10	
Nov. 21			Millwall Reserves	3223	83	3 0				
		Nov. 27	Arsenal Reserves				7116	158	2 0	
Dec. 5		Dec. 4	Fulham				13529	653	13 6	
			Northampton Reserves	3452	90	4 1				
		Dec. 11	West Ham United Reserves				5487	114	16 2	
		Dec. 18	Norwich City				14492	680	2 6	
Dec. 19			Brighton & Hove Reserves	2935	77	1 4				
						150606	6585	0 8	234048	9637	0 3	

N.B. The attendance figures for both League II and London Combination matches, include the number of Season Tickets issued. The gate receipts are the net amounts received after Entertainment Tax has been deducted. The attendance figures for the London Combination matches in Season 1936-7 do NOT include the number of Season Tickets issued.

The Editor is indebted to Mr. H. Brantom of Leighton Buzzard who kindly sent in the following poem.

I AM THE REF.

I am **THE REF.** Please note the **THE**,
No **A Ref.** please, when addressing me.
When I am old, wee daft, and deaf
I still shall be to you **THE REF.**

I am the Monarch of all I survey,
I rule the world, I direct the way.
I'm greater than these rolled into one—
Wellington, Nelson and Napoleon.

I stand aloft with flag unfurled,
Challenging all mid'st shafts that are hurled.
The battle begins and ends at my call,
I am supreme and master of all.

Nations may fall and empires crumble,
Hordes may grouse and captains grumble.
Worlds may grow old awaiting my tumble,
But never will I to the masses humble.

I am the king, I hold the fort,
I defy you all, even scribes of sport.
Draw your bows, and arrows fling,
They cannot pierce a wall of thick skin.

And when my eyes are closed in death
I still shall claim to be **THE REF.**
And at **THE** gates to Peter I'll say
"I am **THE REF.** Make way. Make way!"
H.B.

LETTER to the EDITOR

42, Old Bedford Road,
Luton.

19th December, 1937.

Luton visiting Norwich City for a S.E. League game in 1905, the "Canaries" first year.

Jock Hogg, playing at back, always full of humour, nailed some studs onto the back of his boots. Kicking about in front of the goal prior to the kick-off, one little boy espied them and yelled out "Oi guvener, what yer got yer spurs on for."

Jock looked round, and replied "To back heel the ball to the goalie," doing the action at the same time. (Roar of laughter.)

As the game was about to start, Jock pulled them out and threw them to the boy. (I wonder if he still has them.)

HARRY LANE.

LUTON TOWN FOOTBALL AND ATHLETIC Co., Ltd.

OFFICIAL JOURNAL

A free ticket to the Grand Stand or Enclosure for today's League II match with Barnsley is awarded to Mr. W. Calow, 62, Jackmans Place, Letchworth, who sent in the following "Interest and Humour" story with Programme No. 2709 (18-12-37).

That interesting side line, the serio-comedian critic was at the Luton—Norwich match.

After a tiresome spell, he got fed up with so much ball in the air that he issued instructions to put the blinking lot in a balloon and then as an after-thought, remembering one outstanding personality against such tactics, added "Except Nelson."

This running commentary did not finish with "Time," for overhearing a Lutonian discovering consolation in the fact of obtaining one point, our irrepressible critic could not help but rejoinder, "And blimey, yer 'ad to go to Norwich for a man to do that for yer." (Vinall scored.)

A free ticket to the Grand Stand or Enclosure for today's League II match with Barnsley is awarded to Mr. H. Brantom, of Leighton Buzzard, who sent in the following "Interest and Humour" story with Programme No. 3516 (18-12-37).

At the match on Saturday, was a young man accompanied by his young lady. According to their conversation this was evidently her first visit to a football ground.

The young man eager to show his knowledge, explained the various things relating to the game—goal-posts, goal-lines, corners etc., then the Press-Box and the Centre Stand, where the officials and big ones sit. Just at that moment the Norwich players came out, rather hurriedly he said, "I see Dukes here today!" "Oh how lovely!" she replied, still looking toward the Centre Stand. "Which one?"

PLAYERS' APPEARANCES

	League II		London Combination		F.A. Cup		Other Matches		Total	
	App.	Goals	App.	Goals	App.	Goals	App.	Goals	App.	Goals
Carte, R.	1						1	
Childs, C.	9				6		15	
Coen J. L. ...	8		14				1		23	
Cox, G.	7	5			1		8	5
Daweas A. G. ...	17	7							17	7
Dolmn, H. W. ...	12		7						19	1
Dreyer, G.	10				6	1	16	1
Fellowes, W. J. ...	20	1							20	
Ferguson, C. ...	3	3	16	8			1	1	20	12
Finlayson, J. ...	18								18	
Gager, H. E.					4		4	
Griffiths, E. O. ...	6	1	8	3			1		15	4
Hall, L.	6				5	1	11	1
Hancock, E. ...	6	1	9	4			1		16	5
Hogg, F. ...	4		12	1			3		19	1
Kidd, G. I.	18	1					18	1
King, T. P. ...	13		7						20	
Loughran, J. ...	3		15	1					18	1
Lutterloch, B. R. ...	1		21						22	
McKay, N. V.	4				2	2	6	2
Mackey, T. S. ...	8		12						20	
Mayberry, S.	1							
Nelson, J. ...	19								19	
Parris, J. E. ...	5	2	7	1					12	3
Payne, J. ...	14	8	1	3					15	11
Redfern, W. J. ...	3	2	12	7					15	9
Rich, L. T.	12	6					12	6
Roberts, F. ...	16	5	4						20	5
Smith, T. S. ...	18		1						19	
Stephenson, G. H. ...	13	1	4						17	1
Stevens, R. F. ...	3	1	16	7			4	3	23	11
Strathie, J.	18				1		19	
Vinall, E. J. ...	10	6							10	6
Amateurs and Others	1				30	2	31	2

Next Match, Monday, December 27th, 1937.

LONDON COMBINATION

LUTON TOWN RES. v. COVENTRY CITY RES.

KICK - OFF 2.30 p.m.

ADMISSION Centre Stand 1/6

Stand and Enclosure 1/- Ladies and Boys 6d. :: Ground 6d. Boys 3d.

All Prices include Entertainment Tax

SELL & MITCHELL

AUCTIONEERS, LAND AND ESTATE AGENTS, SURVEYORS AND VALUERS

Wish to tender to the Management, the Players and the Supporters their best wishes for their Happiness and Success during this Christmas and to assure them of their keen interest throughout the season.

7-9, PRINCESS STREET
LUTON

TELEPHONES 2003-4

Also 95, HIGH STREET NORTH
DUNSTABLE

Telephone 354

District Agents for Woolwich Equitable Building Society

ESTABLISHED 1879

TO
LET

To-Day's Half-Time Scores FIRST LIST

A
B
C
D
E
F
G
H
K
L
M
N

NOTE—The Letter in the Programme corresponds with the letter on the Board—thus A 0-1 means that the first-named Club has scored 0 and their opponents 1.

MONO  BRAND
REGD.

SPECIALITIES

Paint and Enamel
Manufacturers
"Stuart" Series
Wallpapers

**OGDEN &
CLEAVER**

Stuart Street, LUTON

TELEPHONE 580

Alma G. Peck

BUILDER ——— CONTRACTOR ——— DECORATOR

5 and 7, WENLOCK STREET

LUTON

PHONES 1752- 3095



Clothes for Men with a Taste for Style!

The more critical you are, the more you will be satisfied with your purchases from Blundells. Up-to-date styles... dependable qualities... supreme values, await you here. Every item of wear, from socks to hat, at the keenest of prices.

BLUNDELL Bros. (LUTON) LTD.
MEN'S DEPT. 12, CHEAPSIDE, LUTON.

'WHITE'S'

have again
supplied

Luton Town
Football Club
with their Boots

They know
the Best

H. WHITE (Luton) LTD.,
Footwear Specialists,
MANCHESTER STREET.

To-Day's Half-Time Scores SECOND LIST

A
B
C
D
E
F
G
H
K
L
M
N

● When passing
through

HARPENDEN

pay a visit to

"The
**MARQUIS of
GRANBY**"

PROPRIETOR - TOM HODGSON
(Ex-Capt., Luton Town F.C.)

FULLY LICENSED

TEA GARDENS

For the

Assurance of getting correct

Results this season

Rely exclusively on the

Best. Get what you

Expect NOW by

Selecting 'FARRBEST' every

Time you buy a Machine.

GEO. F. FARR, The "Farrbest" Hatter's Engineer
COLLINGDON STREET, LUTON

ESTABLISHED 1909

Telephone:
Luton 2055 (2 lines)

Telegrams:
"Farrbest," Luton

MARES
for men's
JAEGER
for
WARMTH

Charles
MARES Limited

George Street & Dunstable Road
LUTON And at St. Albans

TODAY

**PALACE
THEATRE**
LUTON

TODAY

SLIM SUMMERVILLE RICHARD CROMWELL
— IN —

"The ROAD BACK" (A)

NEXT WEEK

NEXT WEEK

Will Hay in **"OH, MR. PORTER"** (U)

FOOTBALL
RUGBY—HOCKEY
BADMINTON
GOLF—FISHING
DARTS and
DARTBOARDS
a Speciality
MINIATURE
BILLIARD TABLES
ROLLER SKATES
in Great Variety

ALL INDOOR GAMES
MONOPOLY—The New Game

SEE WINDOWS

G. A. WILD
AND SONS

Sports Outfitters

14, Manchester Street, Luton
103, High Street N., Dunstable

For a GOOD DINNER
TEA or SUPPER

try

J. BEDDALL

PARTIES CATERED FOR
SATISFACTION ASSURED

67, LEAGRAVE ROAD
LUTON

A few minutes walk from the
Football Ground

BOOK AT
BAILEY'S
FOR

LONDON COASTAL COACHES
ALL INDEPENDENT SERVICES

JERSEY AIRWAYS
LONDON THEATRES
AND
AMUSEMENTS

Daily Services to all
parts of Great Britain

TOBACCONIST
AND BOOKING AGENT

38, NEW BEDFORD ROAD
LUTON

Phone 1972

LUTON TOWN (White Shirts
Black Knickers)

1. Goal
2. Mackey Right Back
3. Finlayson Right Half
4. Daves Outside Right
5. Payne Inside Right
6. Referee: G. DUTTON (Warwick)
7. Lang Outside Left
8. Asquith Inside Left
9. Logan Left Half
10. Shotton Left Back

11. Nelson Centre Half
12. Vinall Centre
13. Hunt Centre
14. Watson Centre Half
15. Inns Goal

League—Division II

1. Goal
2. Smith Left Back
3. Fellowes Left Half
4. Stephenson Outside Left
5. Linesmen
Blue Flag: A. F. Cooper (Bexley Heath)
Red Flag: F. T. Barton (Ealing)
6. Roberts Inside Left
7. Barlow Inside Right
8. Fisher Outside Right
9. Jones Right Half
10. Bokas Right Back

Kick-Off 2.30 p.m.

BARNSELY (Red Shirts
White Knickers)

WINES AND SPIRITS

R. H. Marks Ltd.

69, George Street
and at 81, High Town Road

Luton

AGENTS FOR

MANN, CROSSMAN & PAULIN LTD.
BEERS and STOUTS

J.W. GREEN'S
No. 1 STRONG ALE

WINTER BREW — WINNER, TOO!

Ask for a "LITTLE JOHN" per 6d. nip

beer is best

J. W. GREEN LIMITED, The Brewery, LUTON

Telephone - Luton 3131

L-M-S
RAILWAY

From LUTON to LONDON
RETURN FARE

2/6

Week-days—Any train after 12 noon

Sundays—Any train

Special Train Alteration

Commencing on Saturday, November
20th, the 12.37 p.m. (Weds. and Sats.
only) will leave Luton at 12.20 p.m.
on Saturdays, due London (St.
Pancras) 12.55 p.m.

WE'RE THERE!

BIRD'S

for

BUILDING
AND DECORATIVE
MATERIALS

CHARLES BIRD & SONS, Limited
Collingdon Street, LUTON

Telephone 1255

— Also —

Corrugated Iron, Wire Netting,
Chain Link Fencing, Chestnut
Paling, Creosote and Garden
Sundries

HARRY CANHAM

Cardboard Box

Packing Case, Ply Box and

Crate Manufacturer

9a, MARKET HILL, LUTON

TELEPHONE 458

WEBDALE'S

of WELLINGTON STREET

FOR

Kitchen Equipment

AND ALL

Household Requirements

AT LOWEST PRICES

21 to 27 WELLINGTON STREET

'Phone: Luton 41

LUTON

You are definitely
"OUT-OF-PLAY"

if you are not buying
YOUR OWN HOUSE

Write for easy and convenient terms to

**LUTON & MIDLANDS
BUILDING SOCIETY**

Telephone: Luton 1067

11, George St.
West
LUTON

Charnley
and Sons
REGISTERED
OPTICIANS

National Health
Insurance

On the Official List of
H.S.A. Opticians

11, Wellington Street
LUTON

Telephone 1808

We are offering
GENUINE 10/6
FOUNTAIN PENS

for
5/6

Nibs to suit all
oooo

W. F. BUNKER

"Fountpen Hospital"
26a, Chapel St., Luton
PHONE 224

E. A. GREEN

BOOKSELLER
NEWSAGENT
STATIONER

Luton's Most
Progressive Circulating
Library

21a, New Bedford Road
and 228, Biscot Road
LUTON

Telephone 476

F. WHITE

Builder
and
Contractor

141,
Stockingstone Road
LUTON



All Classes of
Repairs, Painting and
Decorating Under-
taken

ESTIMATES FREE

To-Day's Half-Time Scores
THIRD LIST

A
B
C
D
E
F
G
H
K
L
M
N

**W.
CHAMBERLAIN**

Proprietors—
A. M. Chamberlain & Co.
R. Deadman

106, Dunstable Road
LUTON

Best British Made
Brushes and Brooms
Enamel Ware

City of London
White Lead Paint

Messrs Merrediths & Co.
Merlac Enamel Paints
Fadeless Wall Paper

Ask for Pattern Books

A TRIAL SOLICITED

Telephone: Luton 2126.

P. W. SMITH,

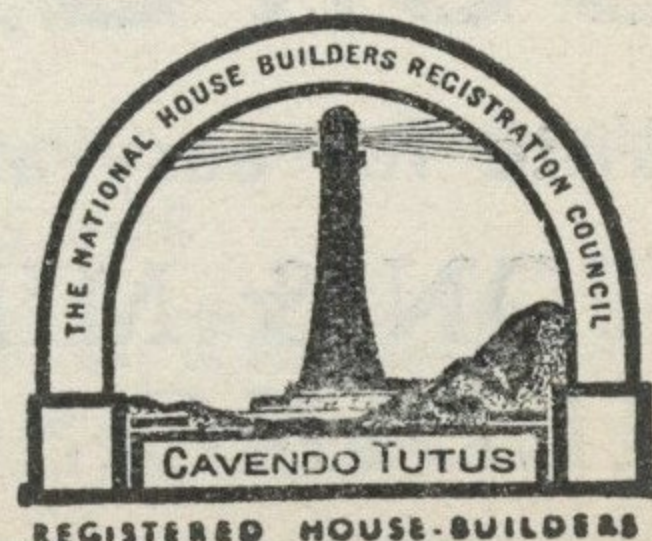
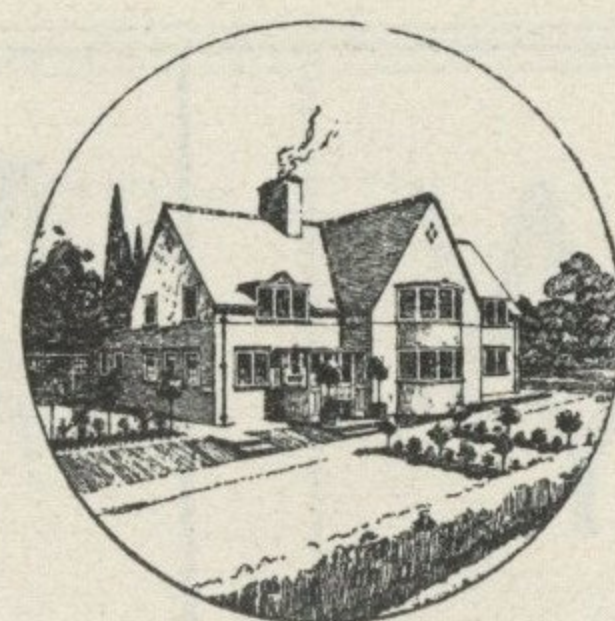
BUILDER

HIGH CLASS DECORATOR

CONTRACTOR

418, Dunstable Road,

Luton.



W. HOLES

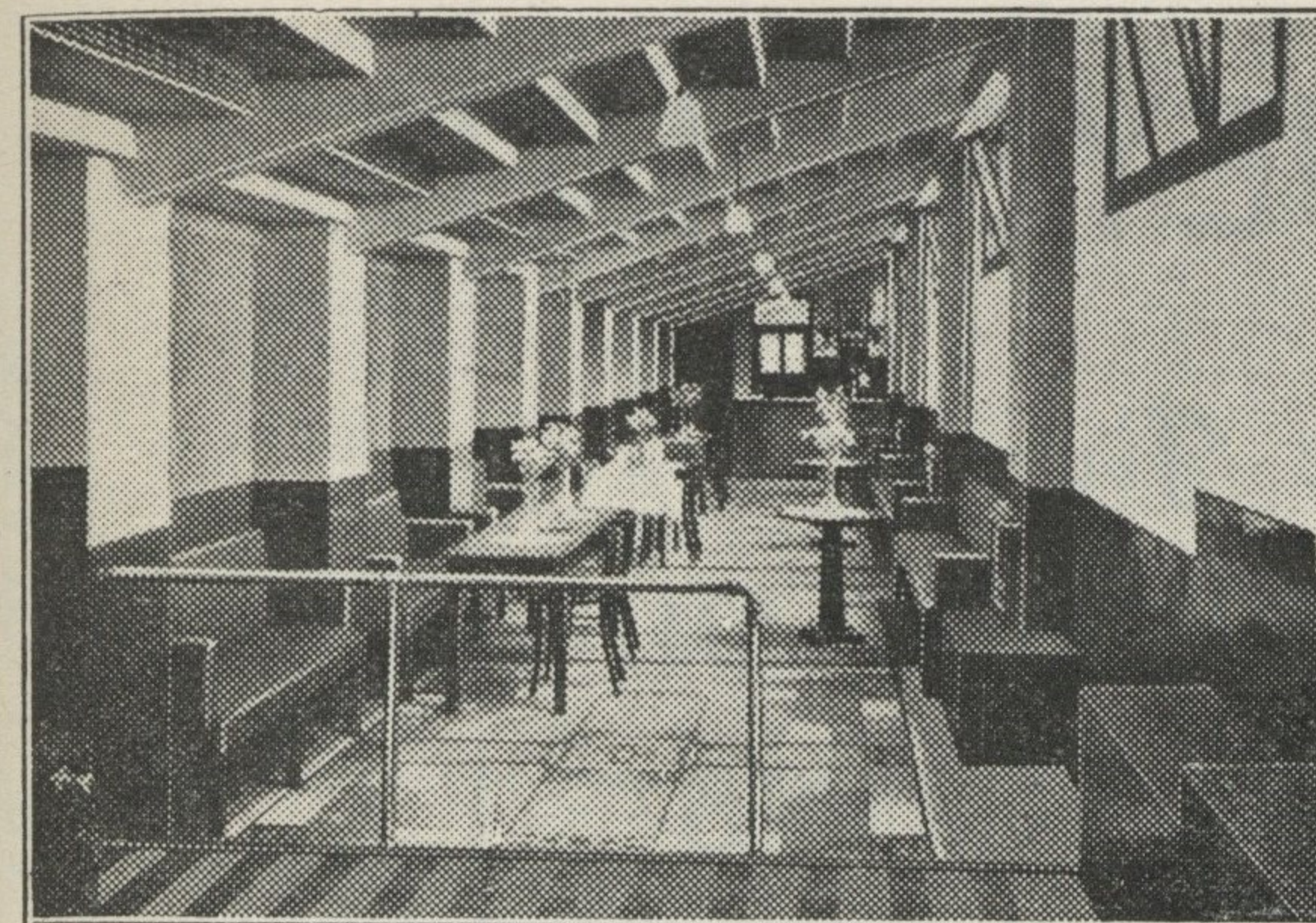
3, Gordon Street, Luton

Coal and
Coke Merchant

Authorised Agent for
Luton Gas Company's
large and graded coke

Agent for
L.M.S. Passenger Dept.

Telephone 210



Mr. Jack Frost played the part of Jonah last Saturday, and try as hard as our boys did they could not stop the "Canaries" from getting that squeaky point. Nevertheless we must still look to our laurels and this Xmas obtain as many points as possible. We need have no fear that the lads will not do their best. So let us give them all the help possible. The reserve team was also unfortunate last Saturday, so today let us hope to see them win.

*Luton's Oldest and Largest
Restaurant*

SEATING ACCOMMODATION FOR 300

ESTABLISHED 65 YEARS

Private Parties Catered For

**CENTRAL
RESTAURANT**

20 - 22 - 24, CHEAPSIDE

PHONE 172

Proprietor: S. G. Primett

BOBBERS STAND CLUB

President: P. W. Wright, Esq.

Hon. Secretary-Treasurer: J. Collier.

Committee: Messrs F. Cooper, F. Dean,
A. Flitton, E. Gibbs, J. Meades, S. Setchell.

'Phone 2566.

THE BOBBERS STAND CLUB

— ANNUAL —

CHILDREN'S XMAS PARTY

Wednesday, December 29th, 1937

3 o'clock to 8.30 p.m.

IN THE MEMORIAL HALL
DUNSTABLE ROAD

The Committee wish all
Members, Directors, Players and
all Football Followers Best
Wishes for Xmas and the Coming
Year.

The best resolution you can make,
if you intend making one—

JOIN THE BOBBERS

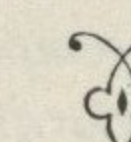
This resolution will only
cost you 1/2 per year.

**A. E.
NICHOLLS**

Wholesale

CONFECTIONER & TOBACCONIST

CAN SUPPLY YOU WITH
EVERYTHING YOU WANT
FOR THE TOBACCO AND
CONFECTIONERY TRADE
AT LOWEST PRICES



Prompt Delivery and Civility

16, MILL STREET, LUTON

'Phone: Luton 902

CHARLES JEYES LTD.

The Reliable Firm for

ALL CLASSES OF BUILDINGS AND DECORATIONS

BUILDING SITES IN THE BEST PARTS OF THE TOWN

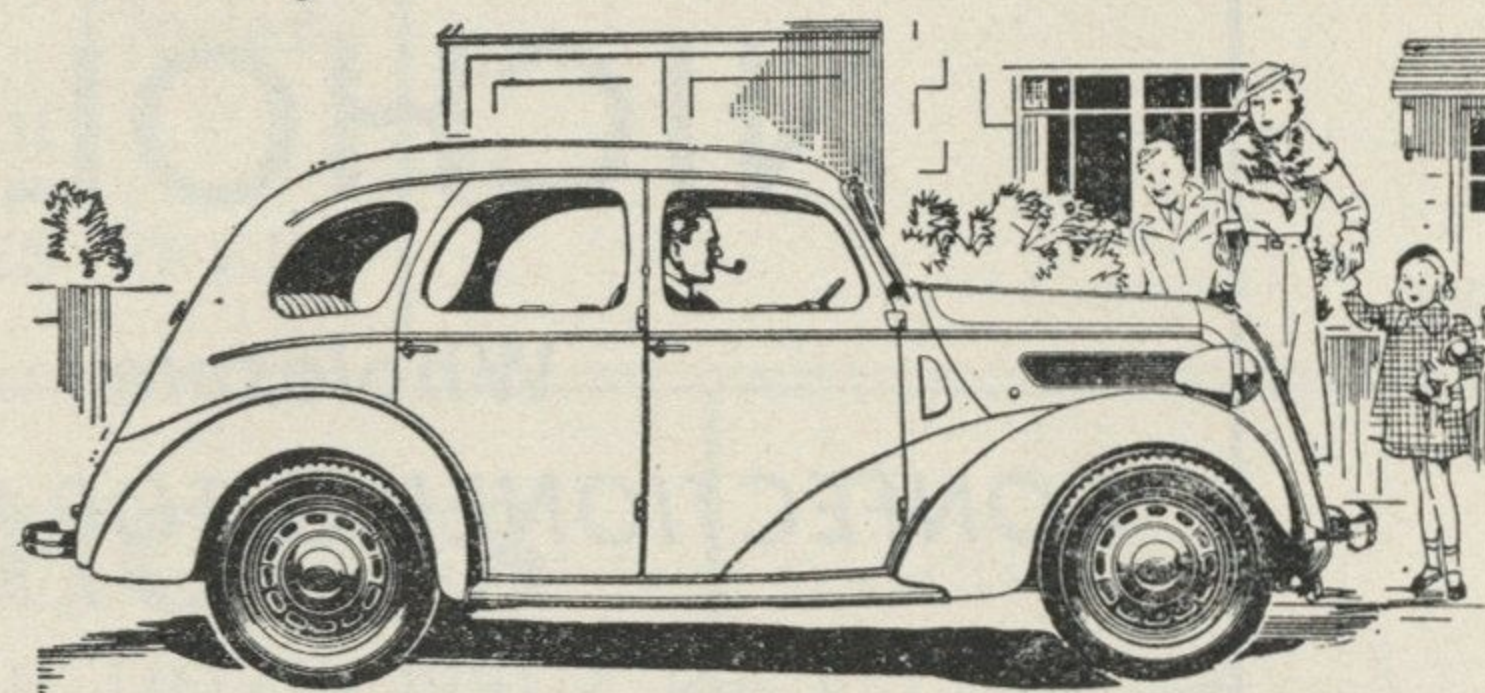
REPAIRS OF ALL KINDS A
SPECIALITY

17a, WINDSOR STREET, LUTON

TELEPHONE 594

A Gift

they will always remember!

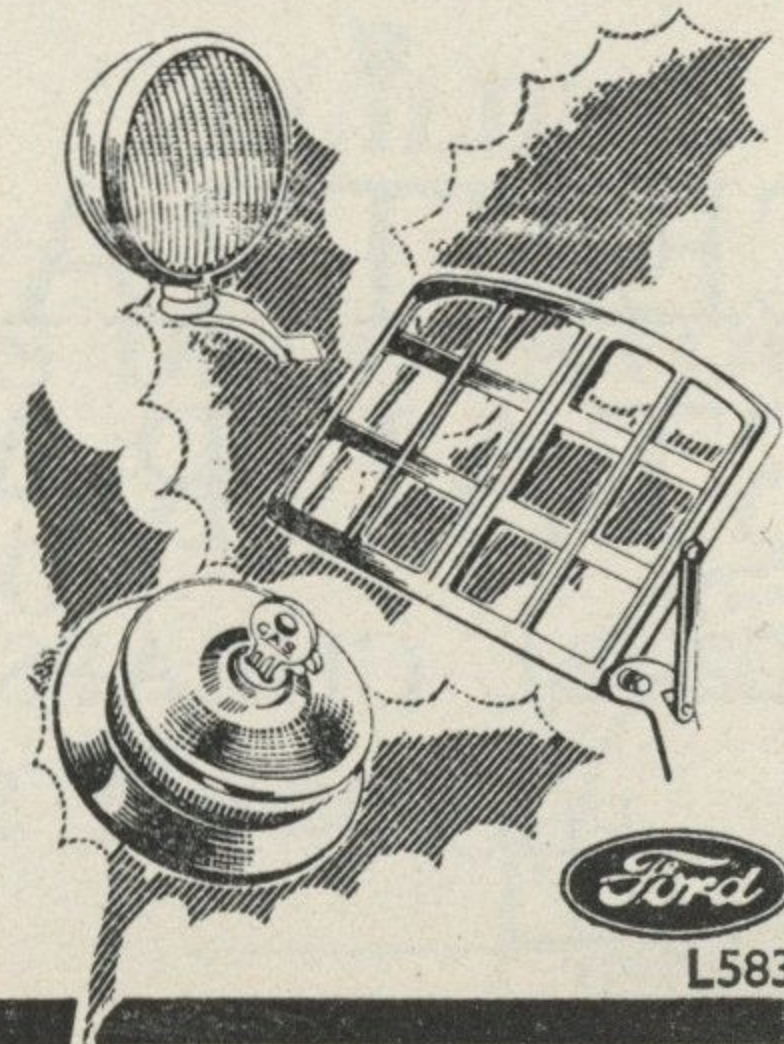


*The Ford "Ten" Saloon at £150, or the Double-Entrance Saloon at £162 10s. can be secured for **£35 DOWN** taxed and insured ready for the road. Talk it over with us to-day!*
(Prices at works)

FORD Accessories—a Splendid Gift!

Add to the pleasures of motoring with genuine Ford accessories. Illustrated are three typical examples: FOG LAMP, *complete with bracket* 35/-. LUGGAGE CARRIER, *sturdy and attractive in appearance, from (according to car)* £1.0.6. PETROL TANK LOCKING GAP WITH KEYS, *Chromium plated* 7/6d.

LUTON MOTOR Co., Ltd.
326, DUNSTABLE ROAD, LUTON. 'Phone 15.



FOOTBALL LEAGUE DIVISION II

RESULTS AT A GLANCE

	Aston Villa	Barnsley	Blackburn R.	Bradford	Burnley	Bury	Chesterfield	Coventry City	Fulham	Luton T.	Manch. U.	Newcastle U.	Norwich City	Notts Forest	Plymouth A.	Sheffield U.	Sheffield W.	Southampton	Stockport C.	Swansea T.	Tottenham H.	West Ham
Aston Villa ...	H +	1 0	2 1	...	0 0	1 1	0 2	1 1	2 0	4 1 2 3	1 3	2 0	0 1	2 0	...	1 0	7 1
Barnsley ...	H 0 1	+ ...	3 5	3 4	2 2	2 0	0 0	...	0 0	...	1 4	3 0	0 1	1 2	3 2	1 1	4 1	0 2	2 0	2 0	0 3	...
Blackburn Rovers ...	H A 1 2	5 3 +	...	0 0	3 3	1 2	...	1 3	2 2	1 4	1 1	2 1	5 3	1 3	2 2	1 1	...	4 0	1 0	2 3	1 3	...
Bradford ...	H A	4 3	0 0	+	1 1	1 1	...	0 0	1 1	1 1	4 0	0 3	3 0	2 2	2 0	1 3	1 1	2 0	2 1	1 0	3 1	...
Burnley ...	H A	...	3 3	1 1	+	2 0	0 2	0 1	...	3 2	...	2 2	...	0 0	...	2 0	1 1	4 0	0 0	1 3	0 4	...
Bury ...	H A	1 1	2 1	1 1	0 2	+	2 1	0 2	...	1 0	1 2	1 1	2 1	0 1	2 0	1 0	0 2	1 4	...	0 0	4 3	...
Chesterfield ...	H A	0 0	2 0	1 2	+	2 2	1 1	1 1	1 7	...	6 2	2 4	2 0	2 0	1 0	5 0	...	2 2	2 2	...
Coventry City ...	H A	...	3 1	0 0	1 0	2 0	2 2	+	4 3	2 1	2 2	2 1	2 0	1 1	4 0	...	0 1	...	1 0	3 3	0 0	...
Fulham ...	H A	0 0	2 2	1 1	1 1	3 4	+	0 4	1 0	1 2	3 4	1 0	0 4	1 2	0 0	...	0 2	0 2	3 1	...
LUTON TOWN ...	H A	3 2	4 1	1 1	2 3	0 1	1 1	1 2	4 0	+	1 0	3 1	1 1	...	4 2	0 2	0 4	6 3	1 2	1 1	2 4	...
Manchester United ...	H A	3 1	1 1	0 4	2 2	...	0 1	+	3 0	3 2	...	0 0	0 1	1 0	1 2	0 1	5 1	1 0	...
Newcastle United ...	H A	0 1	1 2	3 0	2 2	1 1	...	1 2	2 1	1 3	0 3	+	...	0 0	3 1	6 0	1 0	3 0	...	1 0	2 2	...
Norwich City ...	H A	1 0	3 5	0 3	0 3	1 2	2 6	0 2	4 3	1 1	2 3	...	+	2 0	4 0	1 4	3 1	4 3	...	1 1	2 1	...
Notts Forest ...	H A	0 2	3 1	2 2	0 0	1 0	4 2	1 1	0 1	0 0	0 2	+	0 1	1 2	2 0	0 2	1 2	2 1	3 1	...
Plymouth Argyle ...	H A	0 3	2 2	0 2	2 3	0 2	0 2	0 4	4 0	2 4	0 0	1 3	0 4	1 0	+	2 0	...	0 0	2 1	2 2	2 3	...
Sheffield United ...	H A	0 1	1 1	...	2 1	2 1	0 2	...	2 1	2 0	1 0	0 6	...	2 1	0 2	+	1 0	5 0	2 0
Sheffield Wednesday ...	H A	1 2	...	1 1	1 1	2 0	0 1	1 0	2 1	4 0	0 1	0 1	1 3	0 2	...	0 1	+	2 5	3 3	1 1	0 3	...
Southampton ...	H A	0 0	0 4	0 2	0 4	4 1	0 1	3 6	2 1	0 3	3 4	2 0	0 0	0 5	5 2	+	4 1	...	2 1	...
Stockport County ...	H A	1 7	0 1	1 2	0 0	...	1 1	0 1	2 0	2 1	1 0	...	1 1	1 0	1 2	0 2	3 3	1 4	+	...	3 2	...
Swansea Town ...	H A	...	3 2	0 1	3 1	0 0	1 0	3 3	2 0	1 1	1 5	0 1	1 1	1 2	2 2	3 5	1 1	...	0 2	+
Tottenham Hotspur ...	H A	2 1	3 0	3 1	4 0	...	2 2	0 0	...	4 2	0 1	2 2	1 2	1 3	3 2	...	3 0	1 2	2 3	2 0	+	...
West Ham ...	H A	...	4 1	2 0	3 1	3 4	5 0	0 0	0 0	2 2	...	1 0	0 0	0 2	0 1	3 3	0 0	2 1	0 2	+

FIXTURES 1937-8

FIRST XI Division II				F.	A.
Sat., Aug. 28	Stockport County	A 1	2
Wed., Sept. 1	Aston Villa	H 3	2
Sat., " 4	Manchester United	H 1	0
Mon., " 6	Aston Villa	A 1	4
Sat., " 11	Sheffield United	A 0	2
Wed., " 15	Newcastle United	A 3	1
Sat., " 18	Tottenham Hotspur	H 2	4
Sat., " 25	Burnley	A 2	3
Sat., Oct. 2	Bury	H 0	1
Sat., " 9	Coventry City	A 1	2
Sat., " 16	Bradford	A 1	1
Sat., " 23	West Ham United	H 2	2
Sat., " 30	Southampton	A 6	3
Sat., Nov. 6	Blackburn Rovers	H 4	1
Sat., " 13	Sheffield Wednesday	A 0	4
Sat., " 20	Chesterfield	H 1	1
Sat., " 27	Plymouth Argyle	A 4	2
Sat., Dec. 4	Fulham	H 4	0
Sat., " 11	Swansea Town	A 1	1
Sat., " 18	Norwich City	H 1	1
Sat., " 25	Barnsley	A	
Mon., " 27	Barnsley	A	
Sat., Jan. 1	Stockport County	H	
Sat., " 8	Manchester United	A	
Sat., " 15	Sheffield United	H	
Sat., " 22	Tottenham Hotspur	A	
Sat., " 29	Tottenham Hotspur	A	
Sat., Feb. 5	Burnley	H	
Sat., " 12	Bury	A	
Sat., " 19	Coventry City	H	
Sat., " 26	Bradford	H	
Sat., Mar. 5	West Ham United	A	
Sat., " 12	Southampton	H	
Sat., " 19	Blackburn Rovers	A	
Sat., " 26	Sheffield Wednesday	H	
Sat., April 2	Chesterfield	A	
Sat., " 9	Plymouth Argyle	H	
Fri., " 15	Nottingham Forest	A	
Sat., " 16	Fulham	A	
Mon., " 18	Nottingham Forest	H	
Sat., " 23	Swansea Town	H	
Sat., " 30	Norwich City	A	
Sat., May 7	Newcastle United	H	

RESERVE FIXTURES London Combination				F.	A.
Sat., Aug. 28	Southend United	5 1 H	3 1
Thur. Sept. 2	Clapton Orient	0 1 A	7 0
Sat., " 4	Portsmouth	0 3 A	0 0
Wed., " 8	Clapton Orient	0 1 H	3 0
Sat., " 11	Chelsea	3 2 H	1 1
Wed., " 15	Bournemouth	1 3 A	1 1
Sat., " 18	Tottenham Hotspur	1 5 A	3 5
Wed., " 22	Leicester City	1 2 H	0 1
Sat., " 25	Queens Park Rangers	4 0 H	2 2
Mon., " 27	Leicester City	1 2 A	1 4
Sat., Oct. 2	Charlton Athletic	0 3 A	0 4
Sat., " 9	Brighton & Hove A.	1 2 H	6 2
Wed., " 13	Bristol City	1 1 A	2 3
Sat., " 16	Swansea Town	2 0 H	1 1
Sat., " 23	Crystal Palace	1 2 A	3 1
Sat., " 30	Reading	6 2 H	3 1
Sat., Nov. 6	Fulham	1 1 A	1 5
Sat., " 13	Millwall	5 3 H	5 1
Sat., " 20	Brentford	0 3 A	0 3
Sat., " 27	Arsenal	1 1 H	1 2
Sat., Dec. 4	Southampton	0 5 A	2 0
Sat., " 11	West Ham	1 2 H	0 1
Sat., " 18	Watford	3 3 A	2 3
Sat., " 25	Coventry City	1 2 A	
Mon., " 27	Coventry City	0 5 H	
Sat., Jan. 1	Southend United	1 1 A	
Sat., " 8	Northampton Town	3 4 H	
Sat., " 15	Portsmouth	1 1 H	
Sat., " 22	Chelsea	1 2 A	
Sat., " 29	Tottenham Hotspur	3 2 H	
Sat., Feb. 5	Queens Park Rangers	1 2 A	
Sat., " 12	Charlton Athletic	1 1 H	
Sat., " 19	Brighton & Hove A.	3 2 A	
Sat., " 26	Swansea Town	1 0 A	
Sat., Mar. 5	Crystal Palace	2 5 H	
Sat., " 12	Reading	1 1 A	
Sat., " 19	Fulham	4 0 H	
Sat., " 26	Millwall	2 9 A	
Sat., April 2	Brentford	4 2 H	
Sat., " 9	Arsenal	0 10 A	
Fri., " 15	Northampton Town	1 4 A	
Sat., " 16	Southampton	3 1 H	
Tues., " 19	Bristol City	1 1 H	
Sat., " 23	West Ham	1 6 A	
Sat., " 30	Watford	5 1 H	
Wed., May 4	Bournemouth	2 1 H	

LEAGUE TABLES

LEAGUE DIVISION II							
	Pld.	Won	Lost	Drn.	For	Agst.	P.
Coventry City	19	10	1	8	31	16	28
Sheffield United	21	13	6	2	35	25	28
Aston Villa	20	11	5	4	34	17	26
Bradford	20	8	3	10	31	22	25
Chesterfield	19	8	5	6	32	28	22
Burnley	21	7	6	8	30	27	22
Manchester United	19	9	7	3	33	21	21
Tottenham Hotspur	20	9	8	3	38	29	21
West Ham United	19	7	5	7	26	19	21
Norwich City	20	8	8	4	34	40	20
LUTON TOWN	20	7	8	5	38	37	19
Notts Forest	20	7	8	5	22	22	19
Stockport County	20	7	8	5	22	30	19
Newcastle United	19	7	8	4	27	24	18
Blackburn Rovers	20	6	8	6	36	39	18
Barnsley	20	7	9	4	29	32	18
Bury	19	7	8	4	20	26	18
Southampton	19	7	9	3	30	43	17
Sheffield Wednesday	20	5	10	5	21	30	15
Swansea Town	20	4	9	7	23	33	15
Fulham	19	3	10	6	18	33	12
Plymouth Argyle	20	4	12	4	23	40	12

LONDON COMBINATION							
	Pld.	Won	Lost	Drn.	For	Agst.	P.
Coventry City	21	15	2	4	53	24	34
Arsenal	23	13	3	7	63	26	33
Fulham	24	14	6	4	40	31	32
West Ham United	24	13	7	4	53	33	30
Watford	24	12	7	5	50	54	28
Queens Park Rangers	21	10	6	5	44	35	25
Portsmouth	23	8	6	9	42	34	25
Tottenham Hotspur	22	8	6	8	47	37	24
Charlton Athletic	21	11	8	2	41	33	24
Millwall	22	11	9	2	41	42	24
Bristol City	23	7	8	8	41	38	22
LUTON TOWN	23	8	10	5	47	42	21
Leicester City	21	9	10	2	45	43	20
Crystal Palace	23	8	11	4	44	49	20
Northampton	23	8	11	4	42	51	20
Chelsea	22	6	9	7	40	42	19
Southampton	23	7	11	5	46	49	19
Clapton O.	19	8	8	3	31	34	19
Southend United	23	6	10	7	37	44	19
Reading	22	7	13	2	39	51	16
Bournemouth	23	5	12	6	28	53	16
Brighton & Hove A.	21	5	11	5	35	63	15
Swansea Town	22	4	11	7	21	42	15
Brentford	21	4	11	6	26	46	14

Edward Martell & Co., Ltd.

TELEPHONE
896-7

Coal and Coke Merchants

ESTABLISHED
1879

24, UPPER GEORGE STREET, LUTON

Burn "Hucknall" Ashless Coal
It Scores Every Time!!

Popular Price! Saves Labour!! Great Heat!!!

WHY NOT TRY IT?

CARRY ON
LUTON TOWN!

a packet of
SWEET
ROSEMARY
TOBACCO
is always enjoyable

W. & F. FAULKNER
LONDON

BRANCH OF THE IMPERIAL TOBACCO CO.
(OF GREAT BRITAIN AND IRELAND), LIMITED

For
PRINTING
THAT

SATISFIES

both for

Price and Quality



E. A. ALLEN

424, Dunstable Road, Luton

TELEPHONE 1626

*The time honoured but
ever new wish* —————

A MERRY CHRISTMAS AND A
HAPPY NEW YEAR IS EXTENDED
TO OUR CUSTOMERS, FRIENDS
AND SUPPORTERS OF THE TOWN
FOOTBALL CLUB IN ALL SINCERITY

RALEIGH

THE ALL-STEEL BICYCLE

When you are buying a bicycle ask
yourself these questions:—

Is it individually produced in
the world's largest and best
equipped cycle factory?

Has it an exclusive design which
ensures easiest possible running?

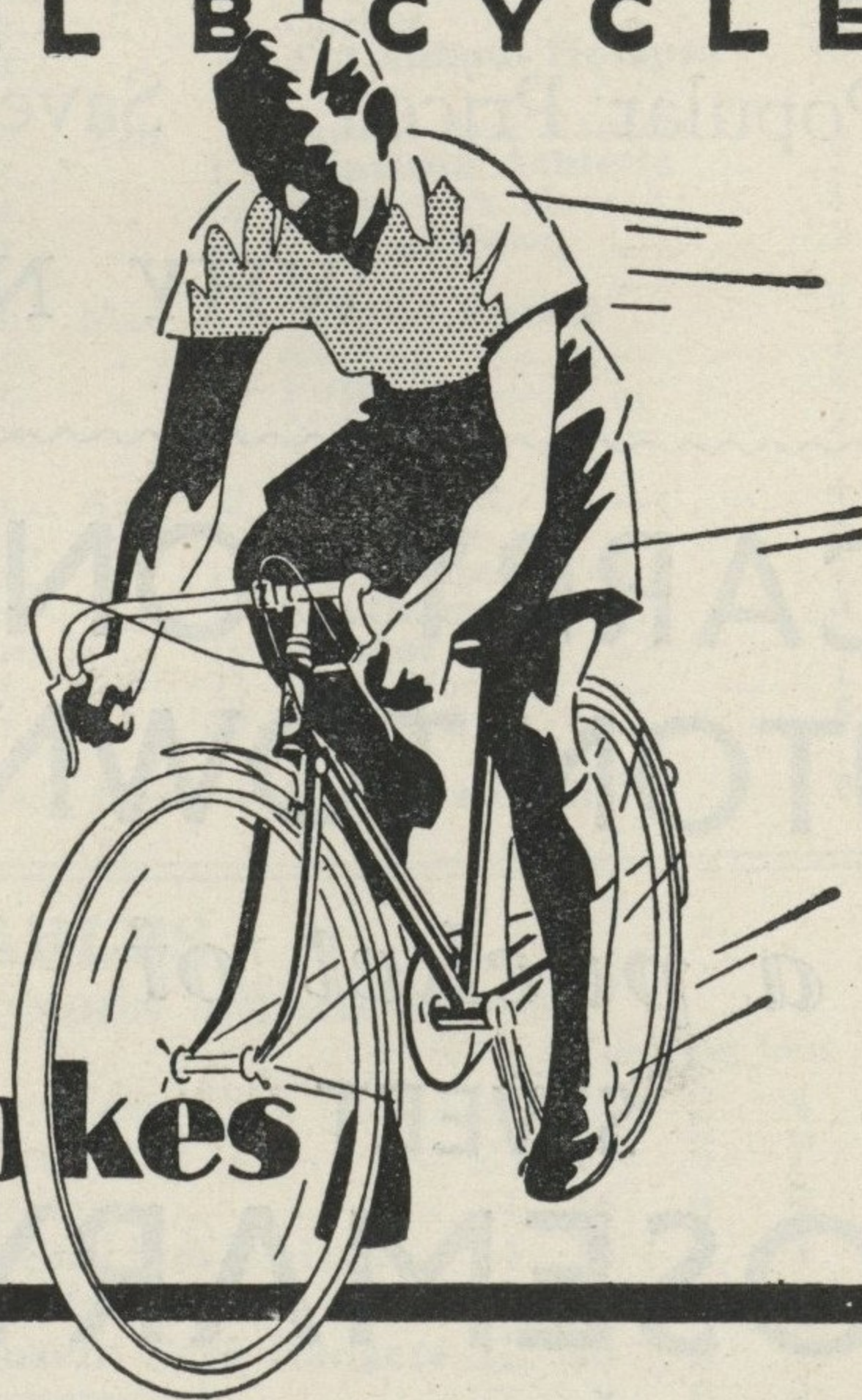
Is the plating and enamel extra
thick to withstand the most in-
clement weather?

— the Raleigh is the answer to these questions.
It will give you the finest possible cycle value
because it is *superior even to the spokes*.

From **£5/10/-** Cash
OR EASY TERMS

Write for Catalogue

Superior
Even to the spokes



A. G. Partridge & Co
PHONE 234 10-12 CHAPEL ST.
LUTON