



LUTON TOWN FOOTBALL AND ATHLETIC CO. LTD.

OFFICIAL
JOURNAL

PRICE 2d



League—Division II

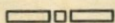
December 18th, 1937.

LUTON TOWN v. NORWICH CITY

“TRUE-FORM”
THE FINEST FOOTWEAR
IN THE TOWN



BUY DIRECT FROM THE MAKERS



LOCAL BRANCH:

44, GEORGE STREET

Head Office and Factories: NORTHAMPTON

Insist upon the
Building Materials for
your new house coming from

POWDRILL'S

BUILDERS' MERCHANTS
COAL and COKE MERCHANTS
BRICK MANUFACTURERS
SAND & GRAVEL QUARRY OWNERS

GEORGE POWDRILL & SON LTD., 1, 3 & 5, HITCHIN ROAD, LUTON
TELEPHONE 2073 (2 Lines)

WHY let the CANARIES DO ALL the SINGING?

Come and join in
the Carol Service at

CHAPEL STREET METHODIST CHURCH

TOMORROW at 6 p.m.,

Rev. PERCY C. MELLOR

ALL ARE WELCOME

A BRIGHT SERVICE

Luton
Football and



Town
Athletic Co.,

LIMITED

Telephone No. 3151-2.

President: Alderman Harry Arnold, C.A., J.P.

Directors:

Chairman: Alderman Chas. Jeyes, C.C.

Messrs E. Hugh Woods, (Vice-Chairman) Frank J. Andrews, Stanley H. Godfrey, C.A.,
Horace S. Hewson, Percival G. Mitchell, Henry Richardson, C.C., Philip W. Wright.

Team Manager: Mr. E. Liddell.

Secretary: Mr. A. E. Wickson.

Honorary Medical Officer: E. J. Crarer, M.B., Ch.B.

Honorary Solicitors: Messrs Machin & Co., 17-19, George Street West, Luton.

CLUB NOTES by "Hatter"

So our good fortune in the F.A. Cup draw has changed. Well we must not grumble too much, for we have had many plums in recent years. The trouble is that the Scarborough team is really an unknown quality. We cannot compare them with any club in the Football League, for they play in a competition which only includes the Reserve teams of League clubs, yet they defeat Darlington by two clear goals, at Darlington, in the first round of the competition. This tie reminds me of one we experienced a few seasons ago, on the occasion of a visit from Kingstonsians. When the tie was known, we were all asking ourselves who would be our opponents in the next round. There was nearly no next round for us, as we just managed to force a drawn game at Luton, after Frank Macey, the Kingstonsian's inside left had missed an open goal half a minute from the end, and then just scraped home by three goals to two in the replay at Kingston. Let us at this juncture therefore, leave it by saying that we **ought** to win.

The boys put up a great fight to bring a point away from Swansea. I am informed it was a real cup tie from start to finish. One can quite understand the "Swans" anxiety for annexing points as they had failed to garner any at all from the previous five matches. To aid them in breaking this run somewhat, they had obtained the transfer, the day previous, of two players, who appeared in the extreme wings against us. However our boys put up a great fight and added to their collection of points. The match was not without its casualties and Bill Dolman as a result will be out of harness for a month or six weeks with cartilage trouble.

The "Stiffs" were forced under by the "Hammers" who scored the only goal of the match. Ground conditions became atrocious and our lads paid the penalty of keeping the ball in the quagmire instead of using the wings. Let us hope they will make amends for this lapse at Watford today.

We welcome Norwich City once again to our ground. To the "Canaries" this match is more or less their "Derby" game, for Luton is their nearest neighbour in the Second Division. Anyhow we hope for a pleasant game and if the relation between the two clubs is anything to go by, it will be a very sportsmanlike affair and will be played under best traditions. May the best team win.

The Norwich City Club, known nationally and locally as the "Canaries," was formed in 1905, and the Club commenced in the old Southern League, the first game being at Plymouth where they were defeated by two clear goals. In their initial season, Norwich finished seventh, a position on which they showed little improvement the following season. From 1905 to 1908 their headquarters was a ground in the Newmarket Road, but from the latter date until a year or so ago they resided at "The Nest" in Rosary Road, which ground was perhaps one of the most curious in the country. Their present domicile is at Carrow Road.

On the formation of the Southern Section of the Third Division after the War, Norwich became members and remained in the section until 1933/4, when they won the championship with the consequent promotion to the Second Division. Their best achievement in the F.A. Cup was in 1909, when they created at a tremendous surprise by knocking out Liverpool, at Liverpool, by the odd goal in five; the following round they were beaten by Bristol City, their opponents eventually reaching the Final Tie.

No 73

ATTENDANCE BAROMETER

1936		1937		1936			1937		
				£	s.	d.	£	s.	d.
Aug. 29	Aug. 28	Southend United Reserves	7346	167	0 3
Aug. 31		Southend United	14353	705 11 1			
		Southend United Reserves	3469	89 11 9			
	Sept. 1	Aston Villa			25349	1299	14 4
	Sept. 4	Manchester United			20610	994	1 1
Sept. 5		Portsmouth Reserves	6048	161 8 11			
Sept. 7		Walsall	11043	486 8 0			
	Sept. 8	Clapton Orient Reserves			4823	93	6 7
	Sept. 11	Chelsea Reserves			7725	175	7 7
Sept. 12		Crystal Palace	13790	707 18 3			
	Sept. 18	Tottenham Hotspur			23788	1235	7 8
Sept. 19		Tottenham Hotspur Reserves	5659	150 14 11			
Sept. 21		Leicester City Reserves	1585	39 18 11			
	Sept. 22	Leicester City Reserves			3626	69	19 2
	Sept. 25	Queens Park Rangers Reserves			6558	142	1 11
Sept. 26		Reading	16378	820 18 0			
	Oct. 2	Bury			17650	821	19 0
Oct. 3		Queens Park Rangers Reserves	3558	91 13 10			
	Oct. 9	Brighton and Hove Reserves			5236	107	4 10
Oct. 10		Bristol City	13255	629 1 7			
	Oct. 16	Swansea Town Reserves			6592	141	16 2
Oct. 17		Watford	20569	1071 17 1			
	Oct. 23	West Ham United			17757	897	18 10
Oct. 24		Southampton Reserves	4120	107 15 2			
	Oct. 30	Reading Reserves			5571	116	1 10
Oct. 31		Bournemouth	11305	591 16 2			
	Nov. 6	Blackburn Rovers			16776	818	16 6
Nov. 7		Fulham Reserves	3080	80 12 3			
	Nov. 13	Millwall Reserves			6929	149	18 5
Nov. 14		Bristol Rovers	12784	599 6 4			
	Nov. 20	Chesterfield			17088	802	11 10
Nov. 21		Millwall Reserves	3223	83 3 0			
	Nov. 27	Arsenal Reserves			7116	158	2 0
	Dec. 4	Fulham			13529	653	13 6
Dec. 5		Northampton Reserves	3452	90 4 1			
	Dec. 11	West Ham United Reserves			5487	114	16 2
				147671	6507 19 4	219556	8956 17 9		

N.B. The attendance figures for both League II and London Combination matches, include the number of Season Tickets issued. The gate receipts are the net amounts received after Entertainment Tax has been deducted. The attendance figures for the London Combination matches in Season 1936-7 do NOT include the number of Season Tickets issued.

???

Do you see anything interesting or humorous during your Saturday afternoon visits to this ground? If so, enter our "Interest and Humour" Competition, for which there is a weekly prize of a free ticket to the Grand Stand or Enclosure for the following League II match for every paragraph printed.

Paragraphs must be confined to a maximum of one hundred words and should be addressed to "The Editor, Football Programme, 70-72, Kenilworth Road, Luton," accompanied by a copy of the Match Programme for that day.

A free ticket to the Grand Stand or Enclosure for today's League II match with Norwich City is awarded to Mr. W. McKenzie, 3, Atherstone Road, Luton, who sent in the following "Interest and Humour" story with Programme No. 3912 (4-12-37).

During the match between Luton Town and Fulham, there were, unfortunately, one or two "incidents," when the referee had to use his

authority and separate the potential "combatants" forcibly. As you will remember, Mr. Gibbs is a comparatively small man, and much applause and amusement was caused near me, when he literally flung himself between two players once, and a spectator shouted "Aint 'e a blinkin' ero—good ol' ref—throw ver weight about."

A free ticket to the Grand Stand or Enclosure for today's League II match with Norwich City is awarded to Mr. H. Smith, "Hazelbrook," Luton Road, Wheathampstead, who sent in the following "Interest and Humour" story with Programme No. 510 (11-12-37).

Luton Town Reserves v. West Ham Reserves

During the above game the ground churned up, especially in the centre, and several of the players floundered badly. It was during the second half of the game when the visiting half back had the ball on the edge of the mud and signalled to the outside right he was going to kick the ball to him, but he waded through the mud and could hardly move the ball, and one of the Town players took the ball from him. At this moment a voice was heard to exclaim "Why don't you send him a postcard and let him know when the ball is coming."

A free ticket to the Grand Stand or Enclosure for today's League II match with Norwich City is awarded to Mr. E. Bolton, 171, Sandridge Road, St. Albans, who sent in the following "Interest and Humour" story with Programme No. 182 (4-12-37).

It was two minutes from the end of the Fulham match, with the Town leading 4-0. The visitors were making a last half-hearted attack on the Town goal when a voice in the Lane Stand called out, to the amusement of those nearby, "Keep trying Fulham, you never know!"

PLAYERS' APPEARANCES

	League II		London Combination		F.A. Cup		Other Matches		Total	
	App.	Goals	App.	Goals	App.	Goals	App.	Goals	App.	Goals
Childs, C.	15	...
Coen, J. L.	7	22	...
Cox, G.	6	4	7	4
Dawes, A. G.	16	7	16	7
Dolman, H. W.	12	...	7	19	1
Dreyer, G.	9	15	1
Fellowes, W. J.	19	1	6	1	19	...
Ferguson, C.	3	3	15	8	19	12
Finlayson, J.	17	17	...
Gager, H. E.	4	...	4	...
Griffiths, E. O.	6	1	8	3	15	4
Hall, L.	6	...	5	1	11	1
Hancock, E.	6	1	9	4	16	5
Hogg, F.	4	...	12	1	3	...	19	1
Kidd, G. I.	17	1	17	1
King, T. P.	13	...	7	20	...
Loughran, J.	3	...	14	1	17	1
Lutterloch, B. R.	1	...	20	21	...
McKay, N. V.	3	...	2	2	5	2
Mackey, T. S.	7	...	12	19	...
Nelson, J.	18	18	...
Parris, J. E.	5	2	7	1	12	3
Payne, J.	13	8	1	3	14	11
Redfern, W. J.	3	2	11	6	14	8
Rich, L. T.	12	6	12	6
Roberts, F.	15	5	4	19	5
Smith, T. S.	17	...	1	18	...
Stephenson, G. H.	12	1	4	16	1
Stevens, R. F.	3	1	15	7	4	3	22	11
Strathie, J.	18	...	1	...	19	...
Vinall, E. J.	9	5	9	5
Amateurs and Others	1	...	30	2	31	2

Next Match, Saturday, December 25th, 1937.

LEAGUE, DIVISION II

LUTON TOWN v. BARNESLEY

KICK - OFF 2.30 p.m.

ADMISSION

Centre Stand 5/- (Reserved Seats)

Stand and Enclosure 2/- Boys 1/- - - Ground 1/- Boys 6d.

All Prices include Entertainment Tax

Monday, December 27th, 1937.

LONDON COMBINATION

LUTON TOWN RES. v. COVENTRY CITY RES.

KICK - OFF 2.30 p.m.

ADMISSION Centre Stand 1/6

Stand and Enclosure 1/- Ladies and Boys 6d. :: Ground 6d. Boys 3d.

All Prices include Entertainment Tax

£500 NR. BISCOT MILL. Modern S.D. HOUSE, containing large hall, 2 rec. rooms, tiled kitchen, 3 beds., bathroom with wash-basin. Separate W.C. Outside Coals and W.C. Ample room for Garage. Good Garden. Large mortgage arranged.

£30 TOTAL DEPOSIT—NO ROAD OR LEGAL CHARGES. NEW ESTATE VERY CLOSE TO VAUXHALL AND HANDY TO TOWN. Building commencing immediately. HOUSES will be S.D., and contain 3 beds., 2 rec., tiled kitchen and bathroom, h. & c. water. Everything modern and convenient. ROOM FOR GARAGE if required. NOW IS THE TIME TO SECURE THE BEST SITES ON THIS CONVENIENTLY SITUATED ESTATE.

SELL & MITCHELL

Auctioneers, Land & Estate Agents, Surveyors & Valuers

7-9, PRINCESS STREET
LUTON

TELEPHONES 2003-4

Also 95, HIGH STREET NORTH
DUNSTABLE

Telephone 354

District Agents for Woolwich Equitable Building Society

ESTABLISHED 1879


TO
LET

To-Day's Half-Time Scores

FIRST LIST

A	Birmingham v. Brentford
B	Charlton A. v. Leicester City
C	Chelsea v. Wolverhampton
D	Grimsby Town v. Derby Co.
E	Leeds United v. Manchester C.
F	Liverpool v. Arsenal
G	Middlesbro' v. Bolton Wand.
H	Portsmouth v. Everton
K	Preston North E. v. Sunderland
L	Stoke City v. Huddersfield T.
M	West Bromwich v. Blackpool
N	Barnsley v. Aston Villa

NOTE—The Letter in the Programme corresponds with the letter on the Board—thus A 0-1 means that the first-named Club has scored 0 and their opponents 1.

MONO  BRAND
REGD.

SPECIALITIES

Paint and Enamel
Manufacturers
"Stuart" Series
Wallpapers

**OGDEN &
CLEAVER**

Stuart Street, LUTON

TELEPHONE 580

Alma G. Peck

BUILDER ——— CONTRACTOR ——— DECORATOR

5 and 7, WENLOCK STREET

LUTON

PHONES 1752- 3095



Clothes for Men with a Taste for Style!

The more critical you are, the more you will be satisfied with your purchases from Blundells. Up-to-date styles... dependable qualities... supreme values, await you here. Every item of wear, from socks to hat, at the keenest of prices.

BLUNDELL Bros. (LUTON) LTD.
MEN'S DEPT. 12, CHEAPSIDE, LUTON.

'WHITE'S'

have again
supplied

Luton Town
Football Club
with their Boots

They know
the Best

H. WHITE (Luton) LTD.,
Footwear Specialists,
MANCHESTER STREET

To-Day's Half-Time Scores SECOND LIST

A	Burnley v. Sheffield Wed.
B	Bury v. Fulham
C	Coventry City v. Plymouth A.
D	Manchester U. v. West Ham
E	Newcastle U. v. Swansea T.
F	Notts Forest v. Chesterfield
G	Sheffield U. v. Southampton
H	Stockport v. Bradford
K	Tottenham H. v. Blackburn R.
L	Bournemouth v. Reading
M	Brighton & Hove v. Millwall
N	Bristol Rovers v. Bristol City

● When passing
through

HARPENDEN

pay a visit to

"The
**MARQUIS of
GRANBY**"

PROPRIETOR - TOM HODGSON
(Ex-Capt., Luton Town F.C.)

FULLY LICENSED

TEA GARDENS

For the

Assurance of getting correct

Results this season

Rely exclusively on the

Best. Get what you

Expect NOW by

Selecting 'FARRBEST' every

Time you buy a Machine.

GEO. F. FARR, The "Farrbest" Hatter's Engineer
COLLINGTON STREET, LUTON

ESTABLISHED 1909

Telephone:
Luton 2055 (2 lines)

Telegrams:
"Farrbest," Luton

MARES

for
Caps

Charles **MARES** Limited

George Street & Dunstable Road
LUTON And at St. Albans

TODAY

PALACE THEATRE LUTON

TODAY

WILL MAHONEY WILL FYFFE
— IN —

"Said O'Reilly to McNab" (U)

NEXT WEEK

NEXT WEEK

SLIM SUMMERVILLE and **"THE ROAD BACK"**
RICHARD CROMWELL in (A)

J.W. GREEN'S No. 1 STRONG ALE

WINTER BREW — WINNER, TOO!

Ask for a "LITTLE JOHN" per 6d. nip

beer is best

J. W. GREEN LIMITED, The Brewery, LUTON

Telephone - Luton 3131

L-M-S RAILWAY

From **LUTON** to **LONDON**
RETURN FARE
2/6

Week-days—Any train after 12 noon
Sundays—Any train

Special Train Alteration

Commencing on Saturday, November 20th, the 12.37 p.m. (Weds. and Sats. only) will leave Luton at 12.20 p.m. on Saturdays, due London (St. Pancras) 12.55 p.m.

FOOTBALL
RUGBY—HOCKEY
BADMINTON
GOLF—FISHING
DARTS and
DARTBOARDS
a Speciality
MINIATURE
BILLIARD TABLES
ROLLER SKATES
in Great Variety

ALL INDOOR GAMES
MONOPOLY—The New Game

SEE WINDOWS

G. A. WILD

AND SONS

Sports Outfitters

14, Manchester Street, Luton
103, High Street N., Dunstable

BOOK AT
BAILEY'S
FOR
LONDON COASTAL COACHES
ALL INDEPENDENT SERVICES
JERSEY AIRWAYS
LONDON THEATRES
AND
AMUSEMENTS

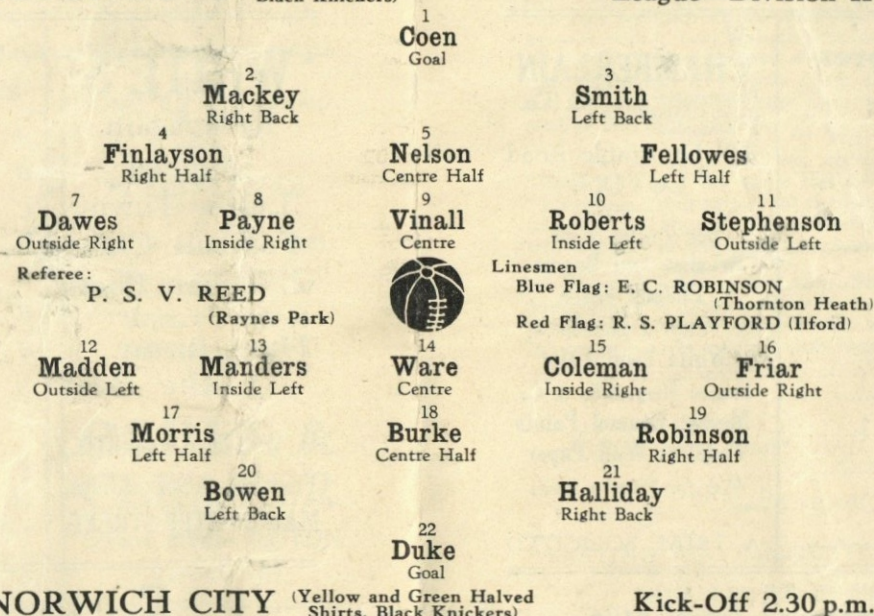
Daily Services to all
parts of Great Britain

TOBACCONIST
AND BOOKING AGENT

38, NEW BEDFORD ROAD
LUTON
Phone 1972

LUTON TOWN (White Shirts
Black Knickers)

League—Division II



NORWICH CITY (Yellow and Green Halved
Shirts, Black Knickers)

Kick-Off 2.30 p.m.

WE'RE THERE!

BIRD'S

for
BUILDING
AND DECORATIVE
MATERIALS

CHARLES BIRD & SONS, Limited
Collingdon Street, LUTON
Telephone 1255

— Also —

Corrugated Iron, Wire Netting,
Chain Link Fencing, Chestnut
Paling, Creosote and Garden
Sundries

HARRY CANHAM

Cardboard Box

Packing Case, Ply Box and

Crate Manufacturer

9a, MARKET HILL, LUTON

TELEPHONE 458

For a GOOD DINNER
TEA or SUPPER

try

J. BEDDALL

PARTIES CATERED FOR
SATISFACTION ASSURED

67, LEAGRAVE ROAD
LUTON

A few minutes walk from the
Football Ground

WINES AND SPIRITS

R. H. Marks Ltd.

69, George Street
and at 81, High Town Road

Luton

AGENTS FOR

MANN, CROSSMAN & PAULIN LTD.
BEERS and STOUTS

You'll be
"CAPTAIN"

of your life if you

BUY YOUR OWN HOUSE

through the

LUTON & MIDLANDS
BUILDING SOCIETY

Telephone: Luton 1067

11, George St.
West
LUTON

WEBDALE'S

of WELLINGTON STREET

FOR

Kitchen Equipment

AND ALL

Household Requirements

AT LOWEST PRICES

21 to 27 WELLINGTON STREET
Phone: Luton 41 LUTON

Charnley
and Sons
REGISTERED
OPTICIANS

National Health
Insurance

On the Official List of
H.S.A. Opticians

11, Wellington Street
LUTON
Telephone 1808

We are offering
GENUINE 10/6
FOUNTAIN PENS

for

5/6

Nibs to suit all
OOOO

W. F. BUNKER
"Fountpen Hospital"
26a, Chapel St., Luton
PHONE 224

E. A. GREEN
BOOKSELLER
NEWSAGENT
STATIONER

Luton's Most
Progressive Circulating
Library

21a, New Bedford Road
and 228, Biscot Road
LUTON
Telephone 476

F. WHITE

Builder
and
Contractor

141,
Stockingstone Road
LUTON



All Classes of
Repairs, Painting and
Decorating Under-
taken

ESTIMATES FREE

To-Day's Half-Time Scores THIRD LIST

A	Cardiff City v. Crystal Palace
B	Clapton Orient v. Exeter City
C	Mansfield Town v. Watford
D	Northampton v. Newport C.
E	Queens Park R. v. Aldershot
F	Southend U. v. Swindon T.
G	Torquay U. v. Gillingham
H	Walsall v. Notts County
K	Bradford City v. Gateshead
L	Doncaster R. v. Darlington
M	Rochdale v. Port Vale
N	Tranmere R. v. Hull City

W. CHAMBERLAIN
& Co.
Proprietors—
A. M. Chamberlain
R. Deadman

106, Dunstable Road
LUTON

Best British Made
Brushes and Brooms
Enamel Ware
City of London
White Lead Paint

Messrs Merrediths & Co.
Merlac Enamel Paints
Fadeless Wall Paper
Ask for Pattern Books

A TRIAL SOLICITED

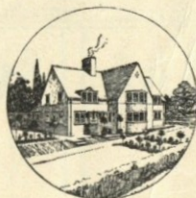
W. HOLES

3, Gordon Street, Luton
Coal and
Coke Merchant

Authorized Agent for
Luton Gas Company's
large and graded coke

Agent for
L.M.S. Passenger Dept.

Telephone 210



Telephone: Luton 2126.

P. W. SMITH,

BUILDER

HIGH CLASS DECORATOR

CONTRACTOR

418, Dunstable Road,
Luton.



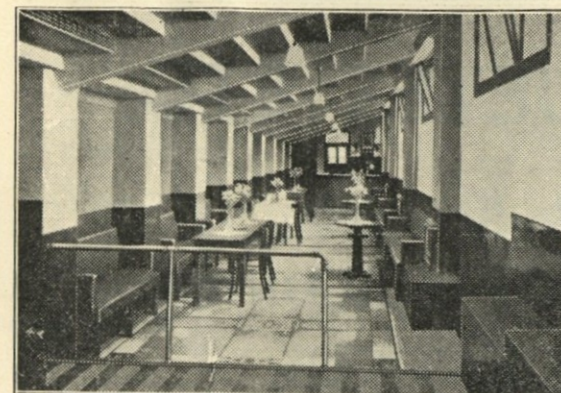
BOBBERS STAND CLUB

President: P. W. Wright, Esq.

Hon. Secretary-Treasurer: J. Collier.

Committee: Messrs F. Cooper, F. Dean,
A. Flitton, E. Gibbs, J. Meades, S. Setchell

'Phone 2566.



of going to see them. We are therefore providing an excursion train and for this we must get a large number. The fare will be 14/- Return. Will those who wish to go give their names to the Door Keeper of the Bobbers Stand Club as early possible, so as to assist with the arrangements that have to be made.

TONIGHT

IS THE GREAT EVENT

at the Assembly Hall

Dancing from 7.30 to 12

The Well Known

MAYFAIR DANCE BAND

Will be in Attendance

ADMISSION - 2/6

Turn up in large numbers so
as to make it a great success

We were not surprised at the result of last Saturday's game at Swansea and if you look at our last week's notes you will see that we remarked that the "Swans" would have to be good swimmers, but you see they could only just wade and we all agree it was a very valuable point that the Boys received. Today we have with us, after a long spell, the "Canaries," let us give them a warm welcome and do our best to stop their singing and also receive two more points.

Now a word or two about our reserves. Those who saw the game last Saturday with the "Hammers," will agree that the lads did not deserve to lose and if they play as well today, the "Wasps" will be short of one if not two home points.

Now for a disappointment. The English Cup—Scarborough v. Luton. This is not our fault, but the Bobbers are trying to make the best of a bad job by giving any football club supporters a chance

*Luton's Oldest and Largest
Restaurant*

SEATING ACCOMMODATION FOR 300

ESTABLISHED 65 YEARS

Private Parties Catered For

**CENTRAL
RESTAURANT**

20-22-24, CHEAPSIDE

PHONE 172

Proprietor: S. G. Primett

**A. E.
NICHOLLS**

Wholesale

CONFECTIONER & TOBACCONIST

CAN SUPPLY YOU WITH
EVERYTHING YOU WANT
FOR THE TOBACCO AND
CONFECTIONERY TRADE
AT LOWEST PRICES



Prompt Delivery and Civility

16, MILL STREET, LUTON

'Phone: Luton 902

FIXTURES 1937-8

FIRST XI Division II

F. A.

Sat., Aug. 28	Stockport County	...	A	1	2
Wed., Sept. 1	Aston Villa	...	H	3	2
Sat., " 4	Manchester United	...	H	1	4
Mon., " 6	Aston Villa	...	A	1	2
Sat., " 11	Sheffield United	...	A	0	2
Wed., " 15	Newcastle United	...	A	3	1
Sat., " 18	Tottenham Hotspur	...	H	2	4
Sat., " 25	Burnley	...	A	2	3
Sat., Oct. 2	Bury	...	H	0	1
Sat., " 9	Coventry City	...	A	1	1
Sat., " 16	Bradford	...	A	1	2
Sat., " 23	West Ham United	...	H	2	3
Sat., " 30	Southampton	...	A	6	3
Sat., Nov. 6	Blackburn Rovers	...	H	4	1
Sat., " 13	Sheffield Wednesday	...	A	0	1
Sat., " 20	Chesterfield	...	H	1	1
Sat., " 27	Plymouth Argyle	...	A	4	2
Sat., Dec. 4	Fulham	...	H	4	0
Sat., " 11	Swansea Town	...	A	1	1
Sat., " 18	Norwich City	...	H		
Sat., " 25	Barnsley	...	H		
Mon., " 27	Barnsley	...	A		
Sat., Jan. 1	Stockport County	...	H		
Sat., " 8	Manchester United	...	A		
Sat., " 15	Sheffield United	...	A		
Sat., " 22	Tottenham Hotspur	...	A		
Sat., Feb. 5	Burnley	...	H		
Sat., " 12	Bury	...	A		
Sat., " 19	Coventry City	...	H		
Sat., " 26	Bradford	...	H		
Sat., Mar. 5	West Ham United	...	A		
Sat., " 12	Southampton	...	A		
Sat., " 19	Blackburn Rovers	...	A		
Sat., " 26	Sheffield Wednesday	...	H		
Sat., April 2	Chesterfield	...	A		
Sat., " 9	Plymouth Argyle	...	H		
Fri., " 15	Nottingham Forest	...	A		
Sat., " 16	Fulham	...	H		
Mon., " 18	Nottingham Forest	...	H		
Sat., " 23	Swansea Town	...	H		
Sat., " 30	Norwich City	...	A		
Sat., May 7	Newcastle United	...	H		

RESERVE FIXTURES London Combination F. A.

Sat., Aug. 28	Southend United	...	5	1	H	3	1
Thur., Sept. 2	Clapton Orient	...	0	1	A	7	0
Sat., " 4	Portsmouth	...	0	3	A	0	0
Wed., " 8	Clapton Orient	...	0	1	H	3	0
Sat., " 11	Chelsea	...	3	2	H	1	1
Wed., " 15	Bournemouth	...	1	3	A	1	1
Sat., " 18	Tottenham Hotspur	...	1	5	A	3	5
Wed., " 22	Leicester City	...	1	2	H	0	1
Sat., " 25	Queens Park Rangers	...	4	0	H	2	2
Mon., " 27	Leicester City	...	1	2	A	1	4
Sat., Oct. 2	Charlton Athletic	...	0	3	A	0	4
Sat., " 9	Brighton & Hove A.	...	1	2	H	6	2
Wed., " 13	Bristol City	...	1	1	A	2	3
Sat., " 16	Swansea Town	...	2	0	H	1	1
Sat., " 23	Crystal Palace	...	1	2	A	3	1
Sat., " 30	Reading	...	6	2	H	3	1
Sat., Nov. 6	Fulham	...	1	1	A	1	5
Sat., " 13	Millwall	...	5	3	H	5	1
Sat., " 20	Brentford	...	0	3	A	0	3
Sat., " 27	Arsenal	...	1	1	H	1	2
Sat., Dec. 4	Southampton	...	0	5	A	2	0
Sat., " 11	West Ham	...	1	2	H	0	1
Sat., " 18	Watford	...	3	3	A		
Sat., " 25	Coventry City	...	1	2	A		
Mon., " 27	Coventry City	...	0	5	H		
Sat., Jan. 1	Southend United	...	1	1	A		
Sat., " 8	Northampton Town	...	3	4	H		
Sat., " 15	Portsmouth	...	1	1	H		
Sat., " 22	Chelsea	...	1	2	A		
Sat., " 29	Tottenham Hotspur	...	3	2	H		
Sat., Feb. 5	Queens Park Rangers	...	1	2	A		
Sat., " 12	Charlton Athletic	...	1	1	H		
Sat., " 19	Brighton & Hove A.	...	3	2	A		
Sat., " 26	Swansea Town	...	1	0	A		
Sat., Mar. 5	Crystal Palace	...	2	5	H		
Sat., " 12	Reading	...	1	1	A		
Sat., " 19	Fulham	...	4	0	H		
Sat., " 26	Millwall	...	2	9	A		
Sat., April 2	Brentford	...	4	2	H		
Sat., " 9	Arsenal	...	0	10	A		
Fri., " 15	Northampton Town	...	1	4	A		
Sat., " 16	Southampton	...	3	1	H		
Tues., " 19	Bristol City	...	1	1	H		
Sat., " 23	West Ham	...	1	6	A		
Sat., " 30	Watford	...	5	1	H		
Wed., May 4	Bournemouth	...	2	1	H		

LEAGUE TABLES

LEAGUE DIVISION II

	Pld.	Won	Lost	Drn.	For	Agst.	P.
Coventry City	18	9	1	8	27	16	26
Sheffield United	20	12	6	2	30	25	26
Aston Villa	19	10	5	4	33	17	24
Bradford	19	7	3	10	29	21	23
Chesterfield	18	8	4	6	30	24	22
Manchester United	19	9	7	3	33	21	21
West Ham United	19	7	5	7	26	19	21
Burnley	20	7	6	7	29	26	21
Tottenham Hotspur	19	8	8	3	35	28	19
Norwich City	19	8	8	3	33	39	19
Stockport County	19	7	7	5	21	28	19
LUTON TOWN	19	7	8	4	37	36	18
Blackburn Rovers	19	6	7	6	35	36	18
Barnsley	19	7	8	4	29	31	18
Bury	19	7	8	4	20	26	18
Notts Forest	19	6	8	5	18	20	17
Southampton	18	7	8	3	30	38	17
Newcastle United	18	6	8	4	26	24	16
Swansea Town	19	4	8	7	23	32	15
Sheffield Wednesday	19	5	10	4	20	29	14
Plymouth Argyle	19	4	11	4	23	36	12
Fulham	19	3	10	6	18	33	12

LONDON COMBINATION

	Pld.	Won	Lost	Drn.	For	Agst.	P.
Coventry City	20	15	2	3	53	24	33
Arsenal	22	12	3	7	61	26	31
Fulham	23	13	6	4	37	31	30
West Ham United	23	13	7	3	53	33	29
Watford	23	11	7	5	47	52	26
Queens Park Rangers	20	10	5	5	44	32	25
Portsmouth	22	8	5	9	42	32	25
Millwall	21	11	8	2	41	41	24
Tottenham Hotspur	21	7	6	8	46	37	22
Charlton Athletic	20	10	8	2	38	32	22
LUTON TOWN	22	8	9	5	45	39	21
Bristol City	22	6	8	8	38	37	20
Northampton	22	8	10	4	41	47	20
Clapton O.	18	8	7	3	30	31	19
Southend United	22	6	9	7	36	42	19
Leicester City	20	8	10	2	41	42	18
Chelsea	21	6	9	6	38	40	18
Crystal Palace	22	7	11	4	35	49	18
Southampton	22	6	11	5	44	48	17
Reading	21	7	12	2	38	48	16
Brighton & Hove A.	20	5	10	5	35	54	15
Bournemouth	22	5	12	5	28	53	15
Swansea Town	21	4	11	6	21	42	14
Brentford	20	4	11	5	24	44	13

Edward Martell

& Co., Ltd.

TELEPHONE

896-7

Coal and Coke Merchants

ESTABLISHED

1879

24, UPPER GEORGE STREET, LUTON

Burn "Hucknall" Ashless Coal

It Scores Every Time!!

Popular Price! Saves Labour!! Great Heat!!!

WHY NOT TRY IT?

CARRY ON

LUTON TOWN!

a packet of

SWEET

ROSEMARY

TOBACCO

is always enjoyable

W. & F. FAULKNER

LONDON

BRANCH OF THE IMPERIAL TOBACCO CO.
(OF GREAT BRITAIN AND IRELAND), LIMITED

For
PRINTING
THAT
SATISFIES

both for

Price and Quality



E. A. ALLEN

424, Dunstable Road, Luton

TELEPHONE 1626

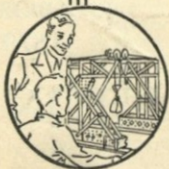
PARTRIDGE'S TOY FAIR

MECCANO

and

HORNBY TRAINS

These world-famous products of Meccano Limited are universally acknowledged to be the best of all hobbies for boys. Come and see our big display.

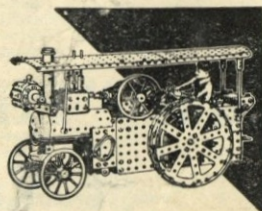


PRICES TO
SUIT ALL

Playing the great game of railways with Hornby Rolling Stock and Accessories is fine fun. It enables a boy to carry out realistically almost every operation in modern railway practice. See our special display of Hornby Trains, Rolling Stock and Accessories.

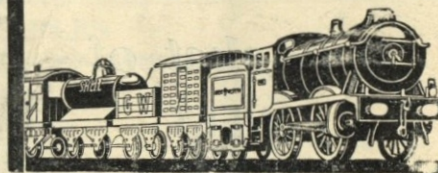
Three impulses common to almost every boy—to invent, to design, to create—are the reasons for the world-wide popularity of Meccano. With this wonderful constructional system hundreds of splendid engineering models can be built by any boy with the greatest of ease. Let us demonstrate its possibilities to you.

THE
WORLD'S
FINEST
HOBBIES
FOR BOYS
AND GIRLS



There are no other toys in the world to equal the wonderful range made by Meccano Limited. We carry full stocks, and cordially invite every boy and girl to come and see them.

— THE —
LARGEST STOCK
IN THE COUNTY



The Largest Stock of Toys
of all Kinds in the County

10-12, CHAPEL ST., LUTON