



LUTON TOWN FOOTBALL ·AND· ATHLETIC CO. LTD.

OFFICIAL
JOURNAL

PRICE 2d



League—Division II

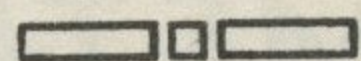
November 20th, 1937.

LUTON TOWN v. CHESTERFIELD

“TRUE-FORM”
THE FINEST FOOTWEAR
IN THE TOWN



BUY DIRECT FROM THE MAKERS



LOCAL BRANCH:

44, GEORGE STREET

Head Office and Factories: NORTHAMPTON

Insist upon the
Building Materials for
your new house coming from

POWDRILL'S

BUILDERS' MERCHANTS
COAL and COKE MERCHANTS
BRICK MANUFACTURERS
SAND & GRAVEL QUARRY OWNERS

GEORGE POWDRILL & SON LTD., 1, 3 & 5, HITCHIN ROAD, LUTON
TELEPHONE 2073 (2 Lines)

What a Team!
What a Crowd!
What a Welcome
AWAITS YOU AT
CHAPEL STREET METHODIST CHURCH
TOMORROW, 10.45 a.m. and 6 p.m.,
Rev. PERCY C. MELLOR
HELPFUL HEARTY SERMONS SINGING

Luton
Football and



Town
Athletic Co.,

Telephone No. 3151-2.

LIMITED

President: Alderman Harry Arnold, C.A., J.P.

Directors:

Chairman: Alderman Chas. Jeyes, C.C.

Messrs E. Hugh Woods, (Vice-Chairman) Frank J. Andrews, Stanley H. Godfrey, C.A.,
Horace S. Hewson, Percival G. Mitchell, Henry Richardson, C.C., Philip W. Wright.

Team Manager: Mr. E. Liddell.

Secretary: Mr. A. E. Wickson.

Honorary Medical Officer: E. J. Crarer, M.B., Ch.B.

Honorary Solicitors: Messrs Machin & Co., 17-19, George Street West, Luton.

CLUB NOTES by "Hatter"

TODAY, we entertain Chesterfield, a club whose rise in the football world has been very rapid during the past few years. It is also the professional club nearest to the birthplace of Joe Payne and I am sure Joe is hoping he will be in opposition to them today. I am writing this before the team has been chosen so cannot say whether he is included or otherwise. I should not be surprised if he is. I have also been asked to continue to give brief histories of the clubs who visit us. I do not mind this in the slightest, for to me it is much easier to write club histories than to give a review of past matches, especially when we lose with a wallop as happened last Saturday at Hillsborough. Well here goes.

The Chesterfield Club, known chiefly in other towns as the "Team of the Crooked Spire" can undoubtedly justify the claim of being one of the oldest clubs in existence. They were founded in the year 1866 and the original members played but friendly matches and it was not until the season 1871-2 that a meeting of those interested was called and the rules drawn up. In those far off days such clubs as Sheffield Wednesday, Notts Forest, Sheffield Garrick, Sheffield Gentlemen and Rotherham were met and Chesterfield won one match against one of these teams by the mammoth score of twenty two goals to one.

No competition was entered until the year 1891, when Chesterfield decided to compete for a cup given by the late Mr. Alfred Barnes, a large colliery proprietor and Member of Parliament for the Division. They succeeded in winning this trophy and in the following year 1892, they lifted the Sheffield Cup, the Derbyshire Minor Cup and the Barnes Cup for the second time. During this season they created tremendous surprise (and consequently upset all football pools) by defeating Sheffield United by three clear goals, the Sheffield team including such well known players as Ernest Newham, Bob Cain, H. and W. Lilley, Scott and Watson.

In 1896, Chesterfield joined the Midland League and remained members of that competition until

they joined the Second Division of the Football League by promotion in 1899. On admission to the Second Division, a meeting was called and it was decided to form the club into a limited liability company with Mr. Edward Mitchell as President.

Chesterfield's fortunes in the Second Division were of a fluctuating character, and after ten seasons, in 1909, they failed to get re-elected at the Annual Meeting of the Football League. From then until the outbreak of war they sojourned once again in the Midland League. The Club was re-constructed in 1918, coming under the auspices of the local Corporation, and was the first club in the country to play municipal football. Then came the formation of the Northern Section of Division III of the Football League in 1921, of which Chesterfield was one of the pioneer members, and their ten years in this Division culminated in their gaining promotion to the Second Division in 1931. After two seasons in the higher sphere they were relegated to the Third Division, only to gain promotion once again at the end of 1935/6.

Last Saturday, Chesterfield created a surprise in League circles (and once again upset the football pools) by losing at home to Manchester United by seven goals to one. I do not like this at all, because they will be out to take this hiding from us and we cannot afford to lose any points at all, especially just now. Just when I thought we were on the upward grade we got licked by four clear goals at Sheffield Wednesday. Ah well, such are the vagaries of football.

The "Stiffs" game with Millwall last Saturday was one of the finest Combination games seen here. True a first glimpse of the score, five goals to one in our favour, would give the impression it was decidedly one-sided. This was not the case however, the big difference in the teams being that our lads finished off their approach work, whereas the "Lions" did not. It was a wonderful comeback for Joe Payne, after his few weeks absence, to score a hat trick and his second goal was a real old-timer, flashing into the net at a break neck speed. Good words must also be written of Ron Stevens and George Kidd, the former in notching the other two goals and the latter for a real excellent display.

In so doing, this does not belittle the exhibition of the other lads for, as I said previously, this was one of the finest games we have seen.

On Wednesday next, we stage the first of our home London Mid-Week League matches, when Crystal Palace (a new club to the Competition this season) provide the opposition. These games are well worth seeing, for it gives us an opportunity of trying out several amateurs, whom it is not deemed prudent to test out in the arduous London Combination games now. The Kick-off is at 2-30 p.m.

Also, on Saturday next we have what we consider our tit-bit game in the Combination, when the Arsenal Reserves pay their annual visit. This is always a fine football spectacle as can be verified from the attendances of past seasons. The Kick-off once again is at 2-30 p.m.

???

Do you see anything interesting or humorous during your Saturday afternoon visits to this ground? If so, enter our "Interest and Humour" Competition, for which there is a weekly prize of a free ticket to the Grand Stand or Enclosure for the following League II match for every paragraph printed.

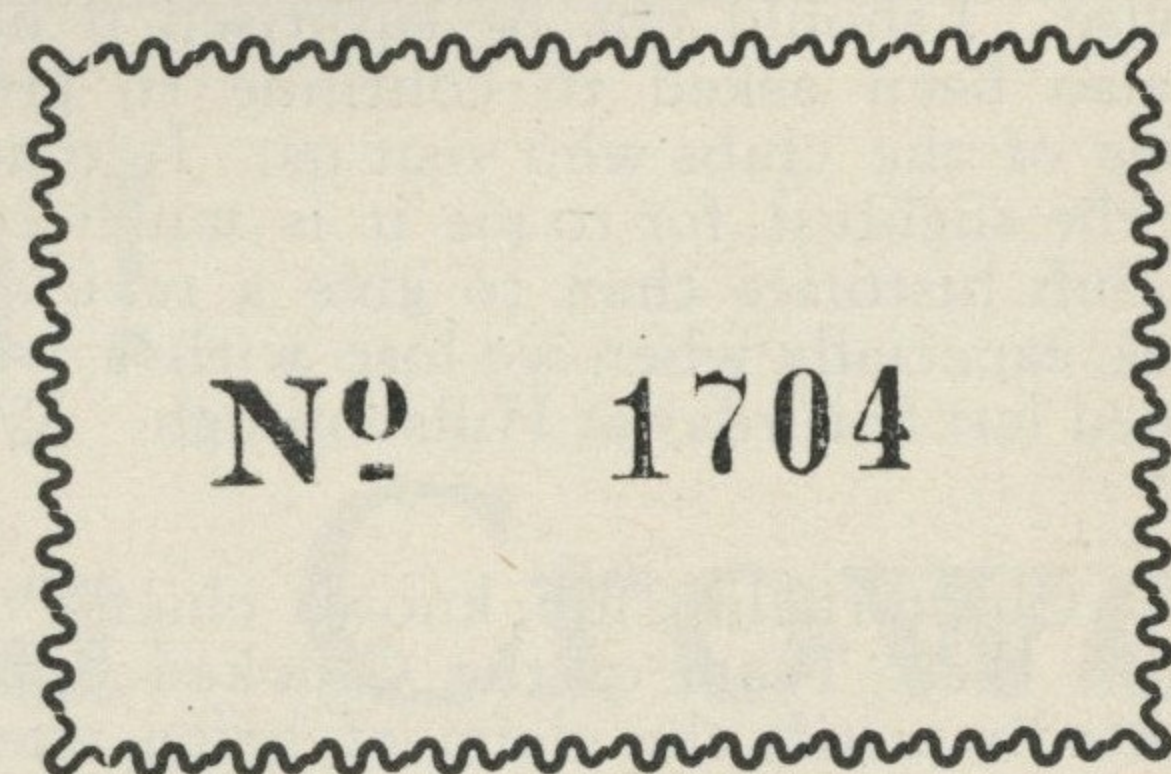
Paragraphs must be confined to a maximum of one hundred words and should be addressed to "The Editor, Football Programme, 70-72, Kenilworth Road, Luton," accompanied by a copy of the Match Programme for that day.

A free ticket to the Grand Stand or Enclosure for today's League II match with Chesterfield is awarded to Mr. H. Newman, 15, Campton, Shefford, who sent in the following "Interest and Humour" story with Programme No. 3245 (6-11-37).

Luton v. Blackburn
During this game a player of the home team was continually being pulled up for offside, which made us all feel a little bit annoyed with the referee. This was especially the case in regard to two small boys who were beside me, who thought the time had come for something to be done about it. Eventually the smaller boy, not being able to contain himself any longer, shouts, "Hi! Ref., you want to get your four aways up, don't yer."

A free ticket to the Grand Stand or Enclosure for today's League II match with Chesterfield is awarded to Mr. G. Emmison, 108, Chaucer Road, Bedford, who sent in the following "Interest and Humour" story with Programme No. 3232 (6-11-37).

A native of Blackburn, I visited Luton on Saturday to see the Rovers. I am a supporter of the Rugby game and did not know the Luton colours. The Rovers played in red, instead of their blue and white and when the game started I thought the team in red was Luton. I was agreeably impressed with the play of the whites (thinking, of course, they were the Rovers). However, during a period of pressure on the reds I heard a plaintive voice cry, "Play up Blackburn." This caused me to consult my programme when, to my chagrin, I discovered my mistake.



Next Match, Wednesday, November 24th, 1937.

LONDON MID-WEEK LEAGUE

LUTON TOWN "A" v. CRYSTAL PALACE "A"

KICK - OFF 2.30 p.m.

Saturday, November 27th, 1937.

LONDON COMBINATION

LUTON TOWN RES. v. ARSENAL RES.

KICK - OFF 2.30 p.m.

ADMISSION Centre Stand 1/6

Stand and Enclosure 1/- Ladies and Boys 6d. :: Ground 6d. Boys 3d.

All Prices include Entertainment Tax

ATTENDANCE BAROMETER

1936		1937			1936			1937		
					£	s.	d.	£	s.	d.
Aug. 29	Aug. 28	Southend United Reserves				7346	167	0 3
Aug. 31		Southend United	14353	705	11 1			
		Southend United Reserves	3469	89	11 9			
	Sept. 1	Aston Villa				25349	1299	14 4
	Sept. 4	Manchester United				20610	994	1 2
Sept. 5		Portsmouth Reserves	6048	161	8 11			
Sept. 7		Walsall	11043	486	8 0			
	Sept. 8	Clapton Orient Reserves				4823	93	6 7
	Sept. 11	Chelsea Reserves				7725	175	7 7
Sept. 12		Crystal Palace	13790	707	18 3			
	Sept. 18	Tottenham Hotspur				23788	1235	7 8
Sept. 19		Tottenham Hotspur Reserves	5659	150	14 11			
Sept. 21		Leicester City Reserves	1585	39	18 11			
	Sept. 22	Leicester City Reserves				3626	69	19 2
	Sept. 25	Queens Park Rangers Reserves				6558	142	1 11
Sept. 26		Reading	16378	820	18 0			
	Oct. 2	Bury				17650	821	19 0
Oct. 3		Queens Park Rangers Reserves	3558	91	13 10			
	Oct. 9	Brighton and Hove Reserves				5236	107	4 10
Oct. 10		Bristol City	13255	629	1 7			
	Oct. 16	Swansea Town Reserves				6592	141	16 2
Oct. 17		Watford	20569	1071	17 1			
	Oct. 23	West Ham United				17757	897	18 10
Oct. 24		Southampton Reserves	4120	107	15 2			
	Oct. 30	Reading Reserves				5571	116	1 10
Oct. 31.		Bournemouth	11305	591	16 2			
	Nov. 6	Blackburn Rovers				16776	818	16 6
Nov. 7		Fulham Reserves	3080	80	12 3			
	Nov. 13	Millwall Reserves				6929	149	18 5
Nov. 14		Bristol Rovers	12784	599	6 4			
					140996	6334	12 3	176336	7230	14 3

N.B. The attendance figures for both League II and London Combination matches, include the number of Season Tickets issued. The gate receipts are the net amounts received after Entertainment Tax has been deducted. The attendance figures for the London Combination matches in Season 1936-7 does NOT include the number of Season Tickets issued.

PLAYERS' APPEARANCES

	League II		London Combination		F.A. Cup		Other Matches		Total	
	App.	Goals	App.	Goals	App.	Goals	App.	Goals	App.	Goals
Childs, C.	9				5		14	
Coen J. L.	10				1		18	
Cox, G.	5	4			1		6	4
Dawes, A. G.	12	6					12	6
Dolman, H. W.	7						15	
Dreyer, G.	6				5	1	11	1
Fellowes, W. J.	15						15	
Ferguson, C.	3	3	12	7	1	1	16	11
Finlayson, J.	13						13	
Gager H. E.					3		3	
Griffiths, E. O.	6	1	6	3	1		13	4
Hall, L.	6				4	1	10	1
Hancock, E.	6	1	6	4			12	5
Hogg, F.	4		11	1	2		17	1
Kidd, G. I.			13	1			13	1
King, T. P.	13		4				17	
Loughran, J.	3		10	1			13	1
Lutterloch, B. R.			17				17	
McKay, N. V.	3				2	2	5	2
Mackey, T. S.	4		11				15	
Nelson, J.	14						14	
Parris, J. E.	4	2	7	1			11	3
Payne, J.	9	4	1	3			10	7
Redfern, W. J.	3	2	7	4			10	6
Rich, L. T.			10	6			10	6
Roberts, F.	11	3	4				15	3
Smith, T. S.	13		1				14	
Stephenson, G. H.	9	1	4				13	1
Stevens, R. F.	3	1	11	7	4	3	18	11
Strathie, J.			16		1		17	
Vinall, E. J.	5	3					5	3
Amateurs and Others			1		25	2	26	2

£500 NR. BISCOT MILL. Modern S.D. HOUSE, containing large hall, 2 rec. rooms, tiled kitchen, 3 beds., bathroom with wash-basin. Separate W.C. Outside Coals and W.C. Ample room for Garage. Good Garden. Large mortgage arranged.

£30 TOTAL DEPOSIT—NO ROAD OR LEGAL CHARGES. NEW ESTATE VERY CLOSE TO VAUXHALL AND HANDY TO TOWN. Building commencing immediately. HOUSES will be S.D., and contain 3 beds., 2 rec., tiled kitchen and bathroom, h. & c. water. Everything modern and convenient. ROOM FOR GARAGE if required. NOW IS THE TIME TO SECURE THE BEST SITES ON THIS CONVENIENTLY SITUATED ESTATE.

SELL & MITCHELL

Auctioneers, Land & Estate Agents, Surveyors & Valuers

7-9, PRINCESS STREET
LUTON

TELEPHONES 2003-4

Also 95, HIGH STREET NORTH
DUNSTABLE

Telephone 354

District Agents for Woolwich Equitable Building Society

ESTABLISHED 1879

To-Day's Half-Time Scores FIRST LIST

A	Birmingham v. Wolverhampton
B	Charlton Athletic v. Arsenal
C	Chelsea v. Manchester City
D	Grimsby Town v. Brentford
E	Leeds United v. Bolton W.
F	Liverpool v. Huddersfield T.
G	Middlesbrough v. Leicester C.
H	Portsmouth v. Derby County
K	Preston N. E. v. Blackpool
L	Stoke City v. Sunderland
M	West Bromwich v. Everton
N	Barnsley v. Swansea Town

NOTE—The Letter in the Programme corresponds with the letter on the Board—thus A 0-1 means that the first-named Club has scored 0 and their opponents 1.

MONO  BRAND
REGD.

SPECIALITIES

Paint and Enamel
Manufacturers
"Stuart" Series
Wallpapers

**OGDEN &
CLEAVER**

Stuart Street, LUTON

TELEPHONE 580

TO
LET

Alma G. Peck

BUILDER ——— CONTRACTOR ——— DECORATOR

5 and 7, WENLOCK STREET

LUTON

PHONES 1752- 3095



Clothes for Men with a Taste for Style!

The more critical you are, the more you will be satisfied with your purchases from Blundells. Up-to-date styles...dependable qualities...supreme values, await you here. Every item of wear, from socks to hat, at the keenest of prices.

BLUNDELL Bros. (LUTON) LTD.
MEN'S DEPT. 12, CHEAPSIDE, LUTON.

'WHITE'S'

have again
supplied
Luton Town
Football Club
with their Boots

They know
the Best

H. WHITE (Luton) LTD.,
Footwear Specialists,
MANCHESTER STREET.

To-Day's Half-Time Scores SECOND LIST

A	Burnley v. Southampton
B	Bury v. Blackburn Rovers
C	Coventry C. v. Sheffield Wed.
D	Manchester U. v. Aston Villa
E	Newcastle U. v. Plymouth A.
F	Notts Forest v. Fulham
G	Sheffield United v. Bradford
H	Stockport C. v. Norwich City
K	Tottenham H. v. West Ham
L	Bournemouth v. Exeter City
M	Brighton & Hove v. Gillingham
N	Bristol Rovers v. Reading

● When passing
through

HARPENDEN

pay a visit to

"The
**MARQUIS of
GRANBY**"

PROPRIETOR - TOM HODGSON
(Ex-Capt., Luton Town F.C.)

FULLY LICENSED

TEA GARDENS

For the

Assurance of getting correct

Results this season

Rely exclusively on the

Best. Get what you

Expect NOW by

Selecting 'FARRBEST' every

Time you buy a Machine.

GEO. F. FARR, The "Farrbest" Hatter's Engineer
COLLINGDON STREET, LUTON

ESTABLISHED 1909

Telephone:
Luton 2055 (2 lines)

Telegrams:
"Farrbest," Luton

MARES
for men's
JAEGER
for
WARMTH

Charles
MARES Limited
George Street & Dunstable Road
LUTON And at St. Albans

TODAY

**PALACE
THEATRE**
LUTON

ROBERT TAYLOR
BARBARA STANWYCK
— IN —

"HIS AFFAIR"
(A)

NEXT WEEK

NEXT WEEK

John Boles in **"As Good As Married"**
(A)

(A)

LUTON TOWN (White Shirts
Black Knickers)

2 Lutterloch Right Back
4 Finlayson Right Half
7 Vinall Outside Right
8 Dawes Inside Right
Referee: S. HADLEY (Leicester)
12 Bonass Outside Left
13 Ramage Inside Left
17 Devine Left Half
20 Kidd Left Back

Doman

Nelson
Centre HalfFyne
CentrePonting
CentreSeagrave
Centre HalfMody
Goal

League—Division II

3 Smith Left Back
6 Fellowes Left Half
10 Roberts Inside Left
11 Parris Outside Left

Linesmen
Blue Flag: L. G. AYLOTT (Waddon)
Red Flag: E. B. SMITH (Oldbury)

15 Clifton Inside Right
16 Hughes Outside Right

19 McMillen Right Half

21 Milburn Right Back

CHESTERFIELD (Blue and White
Shirts, Black Knickers)

Kick-Off 2.30 p.m.

J.W. GREEN'S
No. 1 STRONG ALE

WINNER BREW—WINTER'S TOO!

Ask for a "LITTLE JOHN" per 6d. nip

beer is best

J. W. GREEN LIMITED, The Brewery, LUTON

Telephone - Luton 3131

L-M-S
RAILWAY

From **LUTON to LONDON**

RETURN FARE

2/6

Week-days—Any train after 12 noon

Sundays—Any train

Special Train Alteration

Commencing on Saturday, November 20th, the 12.37 p.m. (Weds. and Sats. only) will leave Luton at 12.20 p.m. on Saturdays, due London (St. Pancras) 12.55 p.m.

FOOTBALL
RUGBY—HOCKEY
BADMINTON
GOLF—FISHING
DARTS and
DARTBOARDS
a Speciality
MINIATURE
BILLIARD TABLES
ROLLER SKATES
in Great Variety

ALL INDOOR GAMES
MONOPOLY—The New Game

SEE WINDOWS

G. A. WILD
AND SONS

Sports Outfitters

14, Manchester Street, Luton
103, High Street N., Dunstable

BOOK AT
BAILEY'S
FOR
LONDON COASTAL COACHES
ALL INDEPENDENT SERVICES
JERSEY AIRWAYS
LONDON THEATRES
AND
AMUSEMENTS

Daily Services to all
parts of Great Britain

TOBACCONIST
AND BOOKING AGENT

38, NEW BEDFORD ROAD
LUTON

Phone 1972

WINES AND SPIRITS

R. H. Marks Ltd.

69, George Street
and at 81, High Town Road

Luton

AGENTS FOR

MANN, CROSSMAN & PAULIN LTD.
BEERS and STOUTS

For a GOOD DINNER
TEA or SUPPER

try

J. BEDDALL

PARTIES CATERED FOR
SATISFACTION ASSURED

67, LEAGRAVE ROAD
LUTON

A few minutes walk from the
Football Ground

There is no
"TRICK PLAY"
in this Building Society.

A SAFE INVESTMENT

WHICH DOES NOT DEPRECIATE

Full details of attractive terms to Investors from

**LUTON & MIDLANDS
BUILDING SOCIETY**

Telephone: Luton 1067

11, George St.
West
LUTON

WE'RE THERE!

BIRD'S

for

**BUILDING
AND DECORATIVE
MATERIALS**

CHARLES BIRD & SONS, Limited
Collingdon Street, LUTON

Telephone 1255

— Also —

Corrugated Iron, Wire Netting,
Chain Link Fencing, Chestnut
Paling, Creosote and Garden
Sundries

HARRY CANHAM

Cardboard Box

Packing Case, Ply Box and

Crate Manufacturer

9a, MARKET HILL, LUTON

TELEPHONE 458

WEBDALE'S

of WELLINGTON STREET

FOR

Kitchen Equipment

AND ALL

Household Requirements

AT LOWEST PRICES

21 to 27 WELLINGTON STREET

Phone: Luton 41

LUTON

Charnley
and Sons
REGISTERED
OPTICIANS

National Health
Insurance

On the Official List of
H.S.A. Opticians

11, Wellington Street
LUTON

Telephone 1808

We are offering
GENUINE 10/6
FOUNTAIN PENS

for
5/6

Nibs to suit all
oooo

W. F. BUNKER
"Fountpen Hospital"
26a, Chapel St., Luton
PHONE 224

E. A. GREEN

BOOKSELLER
NEWSAGENT
STATIONER

Luton's Most
Progressive Circulating
Library

21a, New Bedford Road
and 228, Biscot Road
LUTON

Telephone 476

F. WHITE

Builder
and
Contractor

141,
Stockingstone Road
LUTON



All Classes of
Repairs, Painting and
Decorating Under-
taken

ESTIMATES FREE

To-Day's Half-Time Scores

THIRD LIST

A	Cardiff City v. Swindon Town
B	Clapton Orient v. Newport C.
C	Mansfield T. v. Crystal Palace
D	Northampton T. v. Millwall
E	Queens Park R. v. Watford
F	Southend U. v. Bristol City
G	Torquay United v. Notts Co.
H	Walsall v. Aldershot
K	Bradford C. v. Hartlepool U.
L	Doncaster Rover v. Hull City
M	Rochdale v. New Brighton
N	York City v. Wrexham

W. CHAMBERLAIN
& Co.

Proprietors—
A. M. Chamberlain
R. Deadman

106, Dunstable Road
LUTON

Best British Made
Brushes and Brooms
Enamel Ware

City of London
White Lead Paint

Messrs Merrediths & Co.
Merlac Enamel Paints
Fadeless Wall Paper

Ask for Pattern Books

A TRIAL SOLICITED

W. HOLES

3, Gordon Street, Luton

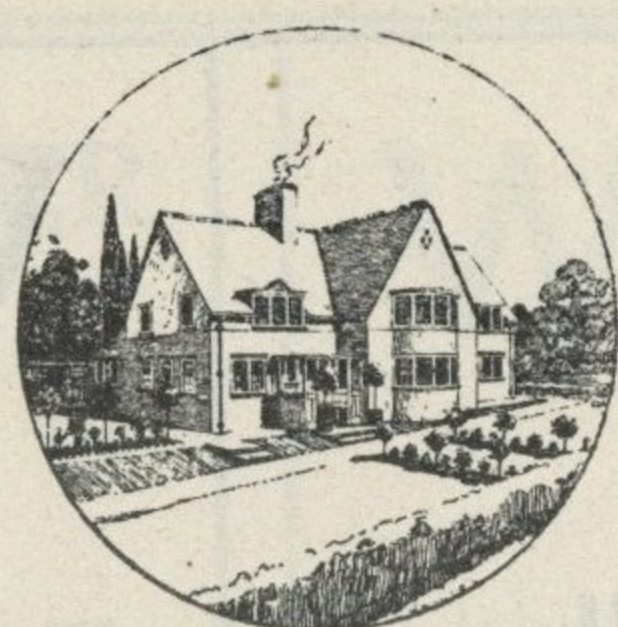
Coal and
Coke Merchant

Authorised Agent for
Luton Gas Company's
large and graded coke

Agent for

L.M.S. Passenger Dept.

Telephone 210



Telephone: Luton 2126.

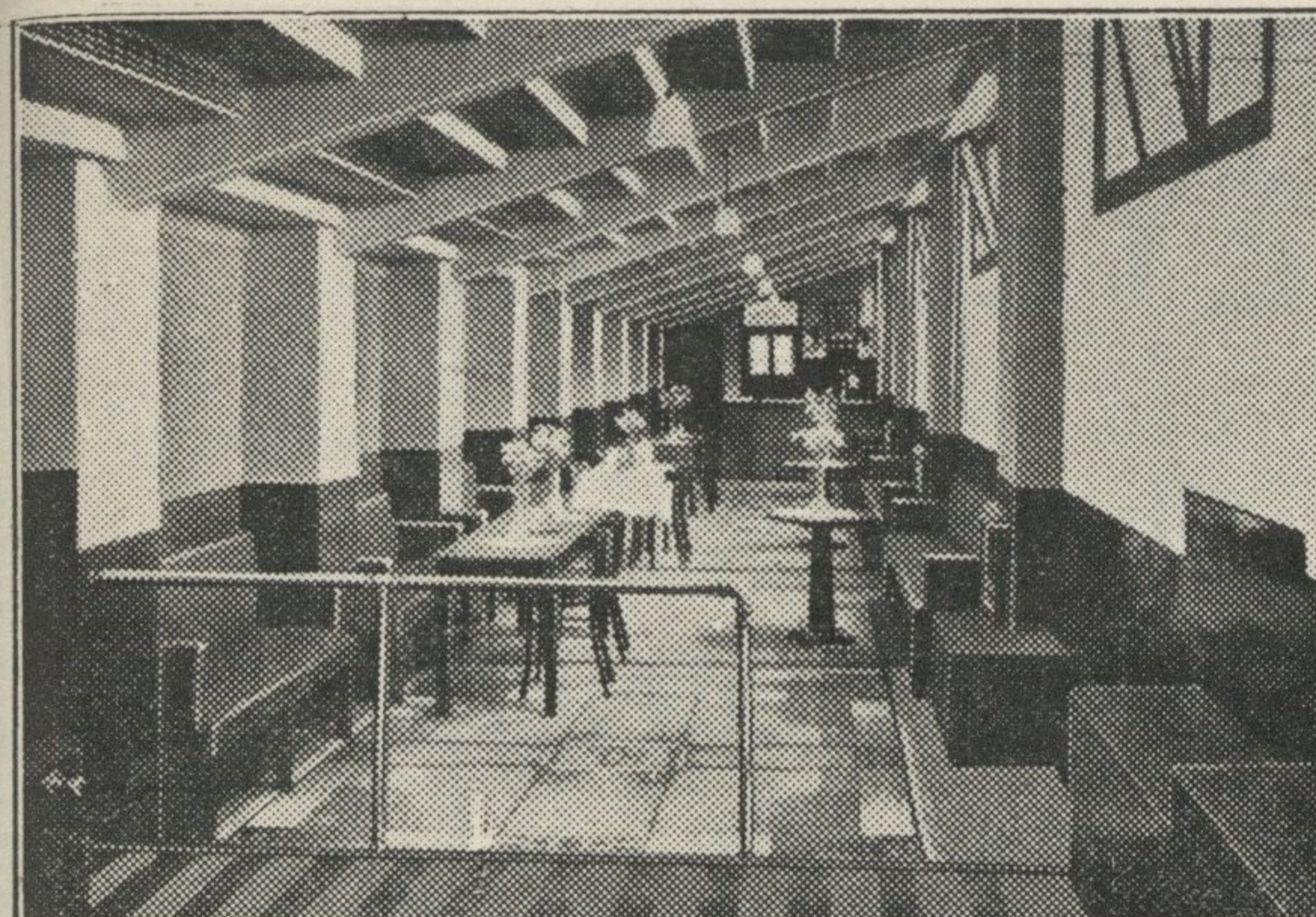
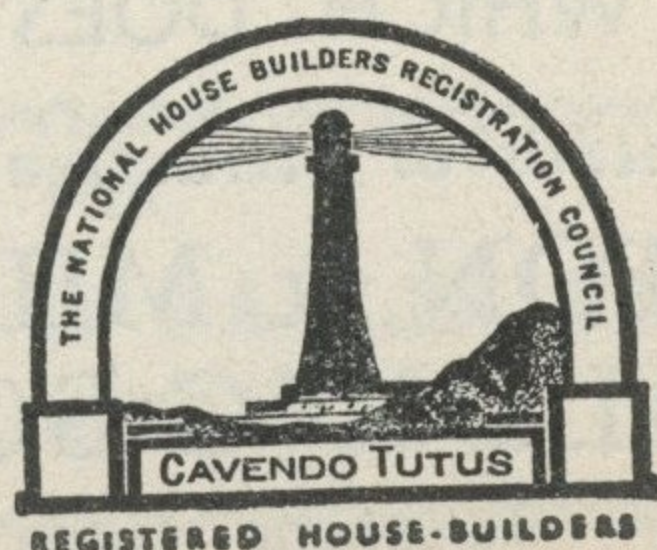
P. W. SMITH,

BUILDER

HIGH CLASS DECORATOR

CONTRACTOR

418, Dunstable Road,
Luton.



BOBBERS STAND CLUB

President: P. W. Wright, Esq.

Hon. Secretary-Treasurer: J. Collier.

Committee: Messrs F. Cooper, F. Dean,
A. Flitton, E. Gibbs, J. Meades, S. Setchell.

'Phone 2566.

from Sheffield last Saturday. To his wife and family also, we offer our heartfelt sympathies. The Club has lost two valuable Members whose passing will be sadly missed by our Members.

The Committee are greatly pleased at the manner in which our Tea Bars are being patronised and to those who have not yet given us their patronage, don't forget you may get tea at any time around the ground during the game or in the Club Room itself. Our Membership is still soaring, but still we have room for more. **Join now and make yourself a Member.**

Last Sunday evening we were entertained by the Serenaders, together with Mr. Bob Angos who rendered several songs that were extremely enjoyed.

Don't forget to book

Saturday, December 18th, 1937,

when we hold our

ANNUAL DANCE

at the ASSEMBLY HALL.

Full Particulars Later.

*Luton's Oldest and Largest
Restaurant*

SEATING ACCOMMODATION FOR 300

ESTABLISHED 65 YEARS

Private Parties Catered For

**CENTRAL
RESTAURANT**

20-22-24, CHEAPSIDE

PHONE 172

Proprietor: S. G. Primett

**A. E.
NICHOLLS**

Wholesale

CONFECTIONER & TOBACCONIST

CAN SUPPLY YOU WITH
EVERYTHING YOU WANT
FOR THE TOBACCO AND
CONFECTIONERY TRADE
AT LOWEST PRICES



Prompt Delivery and Civility

16, MILL STREET, LUTON

'Phone: Luton 902

The Reliable Firm for
ALL CLASSES OF BUILDINGS
AND DECORATIONS

REPAIRS OF ALL KINDS A
SPECIALITY

TELEPHONE 594

TELEPHONE: LUTON 15

LUTON MOTOR Co., Ltd.



MAIN DEALERS

326, DUNSTABLE ROAD, LUTON

Exclusive Ford Dealers and Sole Wholesale
Distributors for South Bedfordshire

*Extensive Selection of New and Used Private
Cars and Commercial Vehicles always in Stock*

FULLY EQUIPPED SERVICE STATION TECALEMIT GREASING
LARGE STOCK OF GENUINE FORD PARTS
CAR WASHING :: PETROL :: OILS :: TYRES :: BODY BUILDING :: REPAIRING
PAINTING :: CELLULOSE LACQUERING

FOOTBALL LEAGUE DIVISION II

RESULTS AT A GLANCE

	Aston Villa	Barnsley	Blackburn R.	Bradford	Burnley	Bury	Chesterfield	Coventry City	Fullham	Luton T.	Manch. U.	Newcastle U.	Norwich City	Notts Forest	Plymouth A.	Sheffield U.	Sheffield W.	Southampton	Stockport C.	Swansea T.	Tottenham H.	West Ham
Aston Villa ...	+	...	2 1	...	0 0	1 1	0 2	1 1	2 0	4 1	...	2 0	0 1	2 0	3 0	...	2 1	0 0
Barnsley	+	3 5	3 4	2 2	2 0	1 4	3 0	...	1 2	...	1 1	4 1	0 2	2 0	...	0 3	...
Blackburn Rovers	5 3	+	0 0	2 2	2 2	1 4	1 1	2 1	5 3	...	2 2	1 1	...	4 0	1 0	2 3
Bradford	4 3	0 0	+	...	1 1	...	1 1	1 1	1 1	...	0 3	3 0	2 2	2 0	...	1 1	2 0	...	1 0
Burnley	+	2 0	0 2	0 1	...	3 2	...	2 2	...	0 0	...	2 0
Bury	1 1	...	1 1	0 2	+	2 1	0 2	...	1 0	1 2	1 1	2 1	0 1	...	1 2
Chesterfield	2 0	1 2	+	2 2	1 1	...	1 7	...	6 2	...	2 0	2 0	1 0	5 0	2 2	...
Coventry City	0 0	1 0	2 0	2 2	+	...	2 1	1 0	2 1	2 0	1 1	1 0	1 0
Fullham	0 0	2 2	1 1	1 1	...	+	...	1 0	...	3 4	...	0 4	1 2	0 0
LUTON TOWN ...	3 2	...	4 1	1 1	2 3	0 1	...	1 2	...	+	1 0	3 1	0 2	0 4	6 3	1 2	...	2 4	2 2
Manchester United	4 1	1 1	7 1	2 2	0 1	0 1	+	3 0	0 1	1 0	1 2	0 1	...	1 0	...
Newcastle United	0 1	1 2	3 0	2 2	1 1	...	1 2	...	1 3	0 3	+	...	0 0	...	6 0	...	3 0	2 2	0 1
Norwich City	3 5	0 3	...	1 2	2 6	0 2	4 3	+	2 0	4 0	...	3 1	4 3	...	1 1	2 1	...
Notts Forest	1 0	...	1 1	0 0	0 2	+	...	1 2
Plymouth Argyle	2 2	0 2	2 3	0 2	0 2	...	4 0	...	0 0	...	0 4	...	+	2 0	...	0 0	2 1	2 2	2 3	...
Sheffield United	1 1	1 1	...	2 1	2 1	0 2	...	2 1	2 0	1 0	0 6	...	2 1	0 2	+	1 0	...	2 0
Sheffield Wednesday	1 4	...	1 1	0 1	...	0 0	4 0	0 1	...	1 3	0 1	+	...	3 3	1 1	0 3	1 0
Southampton	0 1	3 6	3 4	2 0	0 0	...	5 2	+	4 1	3 3
Stockport County	0 2	0 1	0 5	...	2 0	2 1	1 0	1 0	1 4	+	...	3 2	0 0
Swansea Town	3 2	0 1	3 1	0 0	1 0	3 3	2 0	1 1	1 2	2 2	3 5	1 1	+	...	0 0
Tottenham Hotspur	3 0	4 0	0 0	1 3	4 2	0 1	2 2	1 2	1 3	3 2	...	3 0	...	2 3	2 0	+	...
West Ham	4 1	2 0	3 1	5 0	0 0	0 0	2 2	...	1 0	0 0	0 1	3 3	0 0	2 1	...	+

FIXTURES 1937-8

FIRST XI Division II		F. A.
Sat., Aug. 28	Stockport County	A 1 2
Wed., Sept. 1	Aston Villa	H 3 2
Sat., " 4	Manchester United	H 1 0
Mon., " 6	Aston Villa	A 1 4
Sat., " 11	Sheffield United	A 0 2
Wed., " 15	Newcastle United	H 2 4
Sat., " 18	Tottenham Hotspur	A 2 3
Sat., " 25	Burnley	H 0 1
Sat., Oct. 2	Bury	A 1 2
Sat., " 9	Coventry City	A 1 1
Sat., " 16	Bradford	H 2 2
Sat., " 23	West Ham United	A 6 3
Sat., " 30	Southampton	H 4 1
Sat., Nov. 6	Blackburn Rovers	A 0 4
Sat., " 13	Sheffield Wednesday	H
Sat., " 20	Chesterfield	A
Sat., " 27	Plymouth Argyle	H
Sat., Dec. 4	Fulham	A
Sat., " 11	Swansea Town	H
Sat., " 18	Norwich City	H
Sat., " 25	Barnsley	A
Mon., " 27	Barnsley	A
Sat., Jan. 1	Stockport County	H
Sat., " 8	Manchester United	A
Sat., " 15	Sheffield United	H
Sat., " 22	Tottenham Hotspur	A
Sat., " 29	Tottenham Hotspur	A
Sat., Feb. 5	Burnley	H
Sat., " 12	Bury	A
Sat., " 19	Coventry City	H
Sat., " 26	Bradford	H
Sat., Mar. 5	West Ham United	A
Sat., " 12	Southampton	H
Sat., " 19	Blackburn Rovers	A
Sat., " 26	Sheffield Wednesday	H
Sat., April 2	Chesterfield	A
Sat., " 9	Plymouth Argyle	H
Fri., " 15	Nottingham Forest	A
Sat., " 16	Fulham	H
Mon., " 18	Nottingham Forest	H
Sat., " 23	Swansea Town	A
Sat., " 30	Norwich City	A
Sat., May 7	Newcastle United	H

RESERVE FIXTURES London Combination		F. A.
Sat., Aug. 28	Southend United	5 1 H 3 1
Thur., Sept. 2	Clapton Orient	0 1 A 7 0
Sat., " 4	Portsmouth	0 3 A 0 0
Wed., " 8	Clapton Orient	0 1 H 3 0
Sat., " 11	Chelsea	3 2 H 1 1
Wed., " 15	Bournemouth	1 3 A 1 1
Sat., " 18	Tottenham Hotspur	1 5 A 3 5
Sat., " 22	Leicester City	1 2 H 0 1
Wed., " 25	Queens Park Rangers	4 0 H 2 2
Sat., " 27	Leicester City	1 2 A 1 4
Sat., Oct. 2	Charlton Athletic	0 3 A 0 4
Sat., " 9	Brighton & Hove A.	1 2 H 6 2
Wed., " 13	Bristol City	1 1 A 2 3
Sat., " 16	Swansea Town	2 0 H 1 1
Sat., " 23	Crystal Palace	1 2 A 3 1
Sat., " 30	Reading	6 2 H 3 1
Sat., Nov. 6	Fulham	1 1 A 1 5
Sat., " 13	Millwall	5 3 H 5 1
Sat., " 20	Brentford	0 3 A
Sat., " 27	Arsenal	1 1 H
Sat., Dec. 4	Southampton	0 5 A
Sat., " 11	West Ham	1 2 H
Sat., " 18	Watford	3 3 A
Sat., " 25	Coventry City	1 2 A
Mon., " 27	Coventry City	0 5 H
Sat., Jan. 1	Southend United	1 1 A
Sat., " 8	Northampton Town	3 4 H
Sat., " 15	Portsmouth	1 1 H
Sat., " 22	Chelsea	1 2 A
Sat., " 29	Tottenham Hotspur	3 2 H
Sat., Feb. 5	Queens Park Rangers	1 2 A
Sat., " 12	Charlton Athletic	1 1 H
Sat., " 19	Brighton & Hove A.	3 2 A
Sat., " 26	Swansea Town	1 0 A
Sat., Mar. 5	Crystal Palace	2 5 H
Sat., " 12	Reading	1 1 A
Sat., " 19	Fulham	4 0 H
Sat., " 26	Millwall	2 9 A
Sat., April 2	Brentford	4 2 H
Sat., " 9	Arsenal	0 10 A
Fri., " 15	Northampton Town	1 4 A
Sat., " 16	Southampton	3 1 H
Sat., " 19	Bristol City	1 1 H
Tues., " 23	West Ham	1 6 A
Sat., " 30	Watford	5 1 H
Wed., May 4	Bournemouth	2 1 H

LEAGUE TABLES

LEAGUE DIVISION II		Pld.	Won	Lost	Drn.	For	Agst.	P.
Coventry City	...	15	7	0	8	20	11	22
Aston Villa	...	15	8	3	4	23	11	20
Sheffield United	...	16	9	5	2	21	22	20
West Ham United	...	15	6	2	7	22	11	19
Chesterfield	...	15	8	4	3	28	22	19
Bradford	...	15	5	2	8	20	16	18
Blackburn Rovers	...	15	6	4	5	29	25	17
Burnley	...	16	6	5	5	21	21	17
Norwich City	...	15	7	6	2	28	31	16
Manchester United	...	15	6	6	3	22	13	15
Tottenham Hotspur	...	15	6	6	3	29	22	15
Stockport County	...	15	6	6	3	16	19	15
Swansea Town	...	15	4	5	6	21	22	14
Bury	...	15	5	6	4	13	16	14
Notts Forest	...	15	4	6	5	13	17	14
Barnsley	...	15	5	7	3	24	28	13
Southampton	...	15	5	7	3	24	32	13
LUTON TOWN	...	15	5	8	2	27	32	12
Newcastle United	...	15	3	8	4	20	22	10
Plymouth Argyle	...	15	3	8	4	17	26	10
Sheffield Wednesday	...	15	3	8	4	17	26	10
Fulham	...	15	2	7	6	13	23	10

LONDON COMBINATION

LONDON COMBINATION		Pld.	Won	Lost	Drn.	For	Agst.	P.
Coventry City	...	16	12	1	3	43	20	27
Fulham	19	11	4	4	33	24	26
Arsenal	17	8	3	6	48	23	22
Millwall	...	17	10	5	2	33	25	22
Watford	...	19	9	5	5	39	44	22
West Ham United	...	19	9	7	3	43	31	21
Tottenham Hotspur	...	17	6	4	7	39	29	19
LUTON TOWN	...	18	7	6	5	42	33	19
Clapton O.	...	15	8	4	3	29	23	19
Portsmouth	...	18	5	4	9	31	29	19
Queens Park Rangers	...	16	7	5	4	37	30	18
Northampton	19	7	8	4	34	36	18
Charlton Athletic	...	16	7	7	2	26	29	16
Leicester City	...	18	7	9	2	35	39	16
Reading	17	7	8	2	34	38	16
Southend United	...	18	5	7	6	31	37	16
Bristol City	...	18	4	7	7	25	29	15
Southampton	19	5	9	5	37	42	15
Crystal Palace	...	18	6	9	3	27	36	15
Bournemouth	...	18	5	8	5	25	35	15
Chelsea	17	3	8	6	25	32	12
Brighton & Hove A.	...	17	4	9	4	30	46	12
Brentford	...	15	2	8	5	19	33	9
Swansea Town	...	17	2	10	5	17	39	9

Edward Martell

& Co., Ltd.

TELEPHONE

896-7

Coal and Coke Merchants

ESTABLISHED

1879

24, UPPER GEORGE STREET, LUTON

Burn "Hucknall" Ashless Coal

It Scores Every Time!!

Popular Price! Saves Labour!! Great Heat!!!

WHY NOT TRY IT?

CARRY ON

LUTON TOWN!

a packet of

SWEET

ROSEMARY

TOBACCO

is always enjoyable

W. & F. FAULKNER

LONDON

BRANCH OF THE IMPERIAL TOBACCO CO.
(OF GREAT BRITAIN AND IRELAND), LIMITED

For

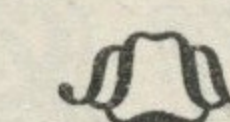
PRINTING

THAT

SATISFIES

both for

Price and Quality



E. A. ALLEN

424, Dunstable Road, Luton

TELEPHONE 1626

Amateurs to-day—
Experts to-morrow



WINTER TIME— The Time for Indoor Games

Whatever you want in
the way of indoor games

PARTRIDGE'S

— can supply you —

BILLIARD TABLES
TABLE TENNIS
ROLLER SKATES

DARTS
DOMINOES
CARDS

CRIB
SHOVEHA'PENNY
SKITTLES Etc., Etc.

TOYS
DOLLS
PRAMS Etc.

Shorten the



road — and
increase
the pleasure
with a

From £5/10/-
or Easy Terms Arranged

Ask for Catalogue

RALEIGH
THE ALL-STEEL BICYCLE

A. G. Partridge & Co

PHONE 234

10-12 CHAPEL ST.
LUTON