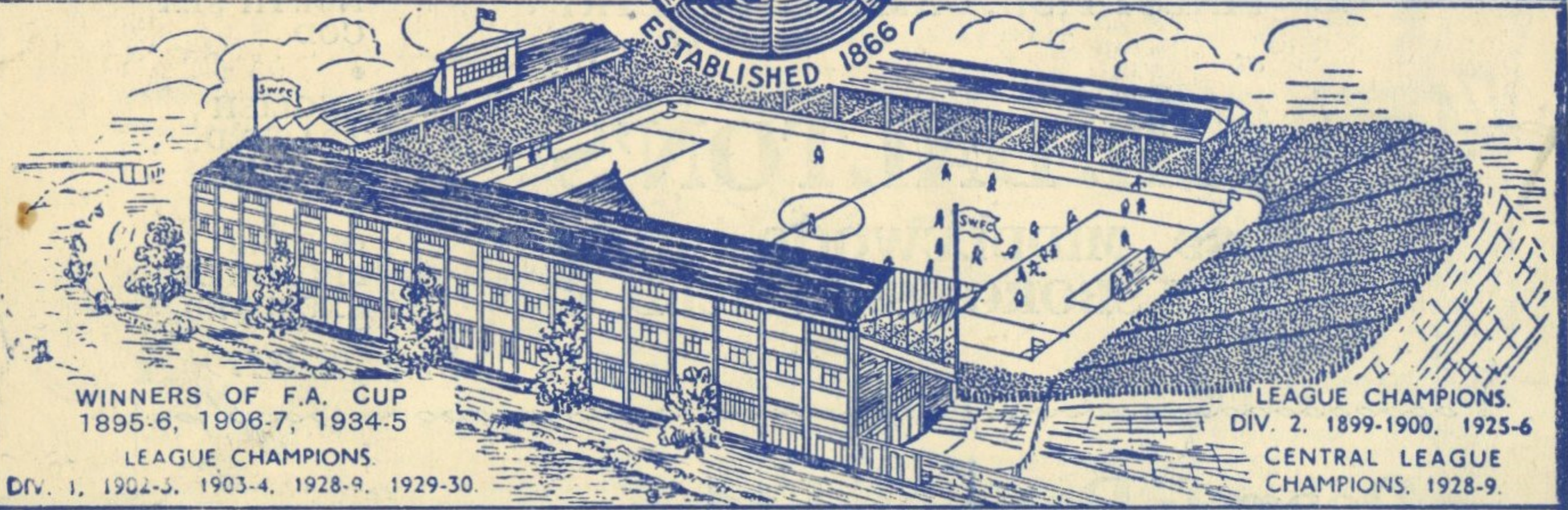


SHEFFIELD



WEDNESDAY



WINNERS OF F.A. CUP
1895-6, 1906-7, 1934-5

LEAGUE CHAMPIONS.

DIV. 1, 1902-3, 1903-4, 1928-9, 1929-30.

LEAGUE CHAMPIONS.
DIV. 2, 1899-1900, 1925-6

CENTRAL LEAGUE
CHAMPIONS, 1928-9.

V. LUTON TOWN

ST. LEGER RAZOR BLADES

FOR 6^d Sheffield's finest
1^d Blade



Made by
THOMAS WARD & SONS LTD.,
Wardonia Works - - Sheffield 1.

Buy a packet of St. Leger
Blades to-day - You will
be delighted with the
pleasing results
From now on use St.
Leger Blades and recom-
mend them to all your
friends.

L.M.S

COVENTRY CITY

v.

SHEFFIELD WEDNESDAY

Saturday, November 20th

SPECIAL EXCURSION TO

COVENTRY

Rotherham (Mas) dep. 10.40 a.m.	}	5/9
Brightside - " 10.45 "		
Sheffield - " 10.55 "	}	5/3
Heeley - " 11. 5 "		
Coventry - arr. 1.32 p.m.		

HOW TO REACH THE FOOTBALL GROUND

Buses will run from Coventry Station to convey passengers to ground.

For full particulars see handbill No. W.1060/R at L.M.S.
Stations and Agencies.

WAKE UP YOUR LIVER BILE



without Calomel—and you'll jump out of bed in the morning full of vim and vigour.

THE LIVER should pour two pints of bile into your bowels daily. If this bile is not flowing freely, your food doesn't digest. It just decays in the bowels. Gas bloats up your stomach. You get constipated. Your whole system is poisoned and you feel sour, sunk and the world looks punk.

Laxatives help a little, but a mere bowel movement doesn't get at the cause. It takes those good old CARTERS Brand LITTLE LIVER PILLS to get these two pints of bile flowing freely and make you feel "up and up." Harmless, gentle, yet amazing in making bile flow freely. Ask for CARTERS Brand LITTLE LIVER PILLS. 1/3 and 3/6, or trial packages for 1d.

The morning after taking CARTERS Brand LITTLE LIVER PILLS

TUNE IN to Radio Luxembourg, Suns. at 11.15 a.m.; Mons. 8.45 a.m.; Thurs. 8.30 a.m. Radio Normandy*, Suns. 2.45 p.m.; Mons. 9 a.m.; Tues. 10.15 a.m.; Thurs. 10.15 a.m. (except 1st Thursday in each month)
* Transmission arranged through the International Broadcasting Company Limited.

season missed only four games. His goal-scoring record is a good one. Born close to Villa Park, Vinall played as an amateur with the Birmingham club before going to Folkestone as a professional. Later, he moved to Sunderland, was "spotted" by Tom Parker who secured him for Norwich City in June, 1933. Dolman, the goalkeeper, is a product of Willenhall, the Birm-

ingham League club, and reached Luton after playing five seasons with Chesterfield and two with Bristol City. One feature of the team is the height of the half-backs. Finlayson the right half-back is 5 ft. 11 ins. tall, Nelson, the centre half-back, is 6 ft. 1½ ins. and Fellowes, the right half, is 5 ft. 11 ins. Finlayson developed with Thorniebank and assisted Mother-

well and Cowdenbeath before signing for Clapton Orient, from which club he was transferred to Luton in 1935. Nelson is a product of Chorley, the Lancashire Combination club, and assisted Preston North End and Wolverhampton Wanderers, the later for three seasons, before he was captured in 1935 by Luton. At one time, he was employed in a bleach works.

Independent Order of Odd Fellows

Manchester Unity Friendly Society. Established 1810.

RISK OF ILLNESS—COMMON TO ALL
PROTECT YOUR INCOME DURING ILLNESS

An Organisation of Thrift and Self Help. More than 1,000,000 voluntary Members. - - - - - Nearly 1,000,000 Health Insured Members.

RESERVE FUNDS TOTAL £28,000,000

Society Administered by the Members. Benefits Guaranteed

The Society for You and Your Family

See our Tables of Contributions and Benefits

District Office—M. V. SWEENEY, 18 York Street, Sheffield 1

Drink "BLACK LABEL" and
enjoy it—CONNOISSEURS do.

WILEY & CO. LIMITED

Established 1832

WINE, SPIRIT & CIGAR
MERCHANTS

Sole Proprietors of

ST. CHRISTOPHER RUM

(Superb Old Jamaica)

BLACK LABEL SCOTCH
WHISKY

(10 Years Old)

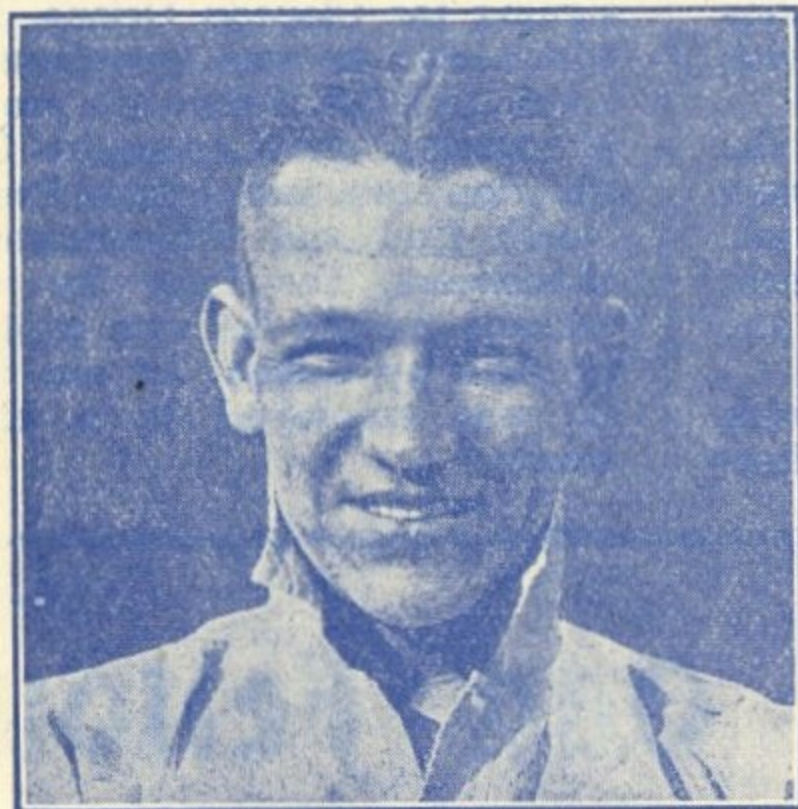
Bonded Warehouse

CASTLE GREEN, SHEFFIELD

Branches in all Districts

MILLSANDS, SHEFFIELD - -

PHONE: 22901



TED CATLIN (Sheffield Wednesday)

THE SEASON'S SURPRISE !

TED CATLIN

"Ted's"
(MY NEW TAILOR)

TED INMAN

37 CHARLES STREET
SHEFFIELD 1

The "Empire" is directly opposite.

Telephone Nos. :
43223 & 43316

G. SUTHERLAND

Caterer

56 MIDDLEWOOD ROAD
SHEFFIELD 6

PROMPT ATTENTION GIVEN TO ALL ORDERS

WEDDINGS, BANQUETS

BALLS, SPORTS

and all

SOCIAL FUNCTIONS

Catered for

Fellowes, the right half, was born at Bradford, but brought up at Tavistock in Devon, and joined Plymouth Argyle. Three seasons later, he moved to Clapton Orient and thence to Luton, also in 1935. He has two businesses at Tavistock.

Albert Dawes, playing at inside right, is the former Crystal Palace forward. He scored 156 goals in one season for Frimley Green, a Surrey junior club and was an amateur with Aldershot before leaving his father's butcher's shop to sign professional for Northampton. Crystal Palace secured him at Christmas in 1933, and Luton last season. He has been reserve for England.

Fred Roberts, inside left, hails from Greets Green, Staffs, and played with Smethwick High-

field and Piggott's local works' team before signing for Birmingham as a centre-forward in 1933. He has been with Luton three seasons and a half.

Parris, the outside-left, is a clever experienced winger and is pretty well-known.

* * * * *

Cyril Webster, an Everton professional since May, 1929, has yet to play in a League match for them!

* * * * *

Rarely, if ever before, in their long history have Bolton Wanderers enjoyed bigger "gates" than they are drawing this season. Their six home First Division games have been witnessed by an average crowd of over 30,000.

Remember James McCrae, the Scottish left half-back who had a good run with West Ham United, Bury and New Brighton after the war?

He has gone far afield in continuing to make his living out of the game, for he is a trainer-coach in Cairo nowadays.

* * * * *

Barrow never pulled many trees up, but no other club has had so many players with quaint names. All these have played for them in the Northern Section: Hatch, Hullock, Sproat, Tubb, Mew, Dark, Host, Ferrari, Moon, Pick, Peed, Postlethwaite, Abrines, Phizacklea, Rumney, Wilce, Nimmo, Wardropper, Gore, Beard, Ouchterlonie, and Urquhart!

AFTER THE MATCH CALL AT THE FLEUR DE LYS HOTEL FARGATE, SHEFFIELD.

Tel. No. 24665.

Proprietor: JACK SMITH.

BUY YOUR TRAVEL TICKETS AT COOK'S

NO BOOKING FEE



Rail Tickets - seats - sleeping-car berths - steamer berths and cabins reserved - also seats in motor coaches where possible. All tickets issued and reservations made at transport companies' fares.

PARTY OUTINGS

By Road - Rail - Air or River. All details arranged in advance. We will gladly supply quotations for simple journeys or for more comprehensive outings combining travel, pre-arranged meals and sightseeing.

Particulars from any Office of—

THOS. COOK & SON Ltd., 31 FARGATE, SHEFFIELD 1

SERVICE

must still be the first consideration when considering where to buy

RADIO

SUGG'S are an old established firm with a REPUTATION. They offer swift and efficient Service and the Easiest of Easy Terms



Please ask for illustrated lists

H. **SUGG** L ANGEL ST.,
H. T
B. D SHEFFIELD.

THE REGENT

THE EMPIRE

TO-DAY

RONALD COLMAN in CAPRA'S
'LOST HORIZON' (U)
Allen Brook in **'MOTOR MADNESS' (U)**

NEXT WEEK from 1.30 p.m.
GRACE MOORE and CAREY GRANT in
"FOR YOU ALONE" (U)
CHARLES QUIGLEY and ROSALIND KEITH in
"CRIMINALS OF THE AIR" (U)

"LET'S GET TOGETHER"
Nat GONELLA Teddy BROWN Phyllis ROBINS

NEXT WEEK
PRINCE LITTLER presents
"THE FROG"
50 Artistes - 17 Sensational Scenes.

LOST YOUR VOICE?

JUST WHEN THE WEDNESDAY need it

Be prepared at the next Match
Buy from your Chemist



T.C.L. TABLETS

(THROAT - CHEST - LUNG)
2 ozs. - 5½d.

THE PINK TABLETS which—
Prevent Hoarseness, Stimulate the Vocal Chords,
Keep out the Fog and Cold, Warm the Bronchial Tubes.

MANUFACTURED AT HILLSBORO' BY
A. L. SIMPKIN & CO., LTD.,
The Barley Sugar Works, Hunter Rd.,
SHEFFIELD 6,

If WEDNESDAY win or lose or draw,
And your tortured larynx is rather raw,
T.C.L.'s from a CHEMIST'S store,
Will restore once more the "WEDNESDAY ROAR."
Anon.

BLURRED VISION
DIFFICULTY IN
RECOGNISING PLAYERS
EYE STRAIN FROM
CONCENTRATION



All require immediate attention.

JENNER'S (Chemists) Ltd.

Special Optical Department
252 LANGSETT ROAD

Registered Office:
882 GRIMESTHORPE ROAD,
SHEFFIELD 9,
and Branches are

**Registered
QUALIFIED OPTICIANS.**

Make your appointment by Telephone
43721



Expert Attention
Meticulous Fitting
Reasonable Charges

SHEFFIELD WEDNESDAY

Right Wing COLOURS: BLUE & WHITE STRIPED JERSEYS, BLUE KNICKERS Left Wing

GOODFELLOW
1
2 ASHLEY 3 CATLIN
4 DRURY 5 MILLERSHIP 6 BURROWS
7 LUKE 8 ROBINSON 9 THOMPSON 10 WALKER, C. J. 11 RIMMER

Referee
Mr. G. W. Jones
(Nottingham)

The 'LAUREL' PENNY Blade



FITS ALL THREE PEG RAZORS

Linesmen:
Mr. J. Burton
(Mansfield)
Blue and White Flag.
Mr. F. E. Phipps
(Leicester)
Red and White Flag.

12 PARRIS 13 ROBERTS 14 VINALL 15 DAWES 16 FERGUSON
17 FELLOWES 18 NELSON 19 FINLAYSON
20 SMITH 21 KING

Left Wing

22 DOLMAN

LUTON TOWN

COLOURS: WHITE JERSEYS, BLACK KNICKERS

Right Wing

FUR COAT
SPECIALISTS

OVER 200
IN STOCK



JOSEPH FOX

(FURRIER) Ltd.

A HELPFUL SUGGESTION TO JUNIOR FOOTBALL CLUBS

SUGG'S HAVE NOW EXTENDED
THEIR EASY PAYMENT SYSTEM

Commence the
Season properly
Equipped and
you can

**PAY AS
YOU PLAY**

Illustrated Catalogue
free on application



H. **SUGG** L ANGEL ST.,
H. T
B. D SHEFFIELD.

USE CREDLAND'S PAINT

IT KEEPS ITS
CLEAN APPEARANCE

★ Protection is
Cheaper than
Decay!

Carloli Oil Paint
Protecteros Gloss Paint
Saneros Water Paint
Smith's Superfine Varnishes

All obtainable from—

CHARLES CREDLAND LIMITED

Head Office:— QUEEN STREET, SHEFFIELD 1.

Telephone 24248

And at BARNSELY and CHESTERFIELD

PLATE and SHEET GLASS MERCHANTS

MIRROR MANUFACTURERS

ALL KINDS OF FANCY AND ORNAMENTAL GLASS

GLASS WALL PANNELLING for BATHROOMS, LABORATORIES, PUBLIC BUILDINGS, etc.

GLASS BEVELLING - SILVERING
EMBOSSING & SANDBLASTING
BRILLIANT CUTTING - BENDING - VENTILATORS
AND DRILLING - SHELVES AND TABLE TOPS
LEADED LIGHTS.

Glass Signs, Re-silvering, Armour Plate Glass, Greenhouse Glass, Decorative Mirrors and Clocks, Glass Aquarium Tanks, Bathroom Fitments, etc. Old and defective Mirrors re-silvered and modernised

Motor Screens & Safety Glass fitted while you wait

ELLIS PEARSON & COMPANY

Telephone : 20208 (2 lines) **CORPORATION St., SHEFFIELD 3** Telegrams : "MIRRORS, SHEFFIELD"

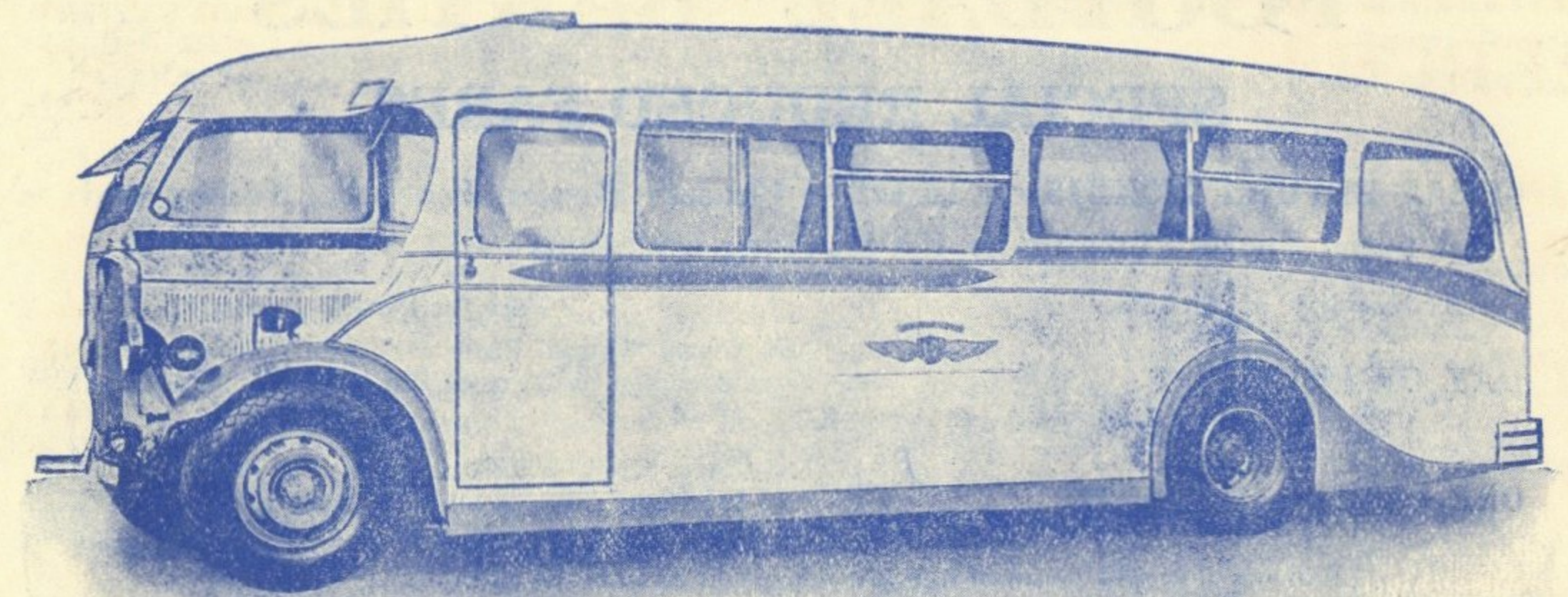
SCORE BOARD FOR TO-DAY

LEAGUE—DIVISION I.		LEAGUE—DIVISION II.	
A BRENTFORD	L DERBY COUNTY	M ASTON VILLA	S LINCOLN CITY
B HUDDERSFIELD TOWN	M LEEDS UNITED	N BURNLEY	T DONCASTER ROVERS
C MANCHESTER CITY	O SWANSEA TOWN	P SHEFFIELD UNITED	U NEW BRIGHTON
D LIVERPOOL	P WEST HAM UNITED.....	Q CHESTERFIELD	U ROTHERHAM UNITED.....
E WOLVERHAMPTON W.	R COVENTRY CITY.....	R MANCHESTER UNITED	
F CHARLTON ATHLETIC.....	S CHESTERFIELD	Q FULHAM.....	
G ARSENAL.....	T MANCHESTER UNITED	R BARNLEY	
H WEST BROMWICH A.		S BRADFORD	
I EVERTON		T BURY.....	
J CHELSEA			
K SUNDERLAND			
L GRIMSBY TOWN.....			
M BLACKPOOL			
N BIRMINGHAM			
O LEICESTER CITY			
P PRESTON NORTH END			
Q BOLTON WANDERERS			
R STOKE CITY.....			

KICK-OFF TIMES IN TO-DAY'S MATCHES

B E G J K L P R 2.30 p.m. C H 2.35 p.m. M 2.40 p.m. A D F N O Q S T U 2.45 p.m.

UNITED MOTOR SERVICES



Luxurious Coaches for Hire for any journey.

Special Well-illuminated, Heated, Radio Coaches Available for Winter Months. Ask for Quotations.

Head Office and Garage :

Charlotte Road - SHEFFIELD 2 Telephone 25158.

Telephone : Woodseats 45492

BIG TREE HOTEL, WOODSEATS

GEO. H. GREENFIELD.

TENNANT'S NOTED ALES AND WILEY'S SPIRITS

MOTOR BUS, SHEFFIELD TRANSPORT DEPARTMENT

Picks up at THE BIG TREE, WOODSEATS, to all First Team matches at WEDNESDAY GROUND.

The Bus will call for you at THE BIG TREE 40 minutes prior to time of kick-off.

L.N.E.R

FOOTBALL PARTIES

SPECIAL REDUCED FARES

CHEAP RETURN TICKETS are issued to Pleasure Parties, Football, Hockey and kindred Sports Clubs under the following conditions:—

Availability of Tickets.	Fare for Double Journey.
DAY OF ISSUE	3rd Class, Single Fare (+ fractions of 1d.); 1st Class, 50% over 3rd Class (+ fractions of 1d.).
ONE CALENDAR MONTH ...	3rd Class, Single Fare and 1/3 (+ fractions of 3d.) 1st Class, 50% over 3rd Class (+ fractions of 3d.).

Children under 14 years of age are conveyed at half the adult fare.

Parties must consist of not less than equal to 8 ADULT FARES (2 children under 14 years of age being counted as one adult), and must travel together in each direction by specified trains.

SPORTS PARTIES

Members of Football and all bona fide Sports Clubs, minimum 4 ADULT FARES, travelling together in both directions, will be conveyed at the rates shown below by prior arrangement with the Railway Company.

Availability of Tickets.	Fare for Double Journey.
DAY OF ISSUE	3rd Class, Single Fare (+ fractions of 1d.); 1st Class, 50% over 3rd Class (+ fractions of 1d.).
ONE CALENDAR MONTH ...	3rd Class, Single Fare and 1/3 (+ fractions of 3d.) 1st Class, 50% over 3rd Class (+ fractions of 3d.).
DAY OF ISSUE	Third Class 2/3 of Single Fare from point to point for a tour (plus fractions of 1d.); 1st Class 50% over 3rd Class (+fractions of 1d.).

ROAD MOTOR COACHES FOR HIRE

The Company can arrange to supply private motor coaches for special parties for special occasions.

In order that satisfactory provision may be made, Secretaries of Clubs requiring meals on trains to which Restaurant Cars are attached should give prior intimation when asking for Reduced Fare facilities to apply.

Should you wish to avail yourself of these or any other cheap party facilities, please make application to your local station a few days before the match, or communicate with the Passenger Manager : Liverpool Street Station, London, E.C.2.

If its Plumbing work you require, consult:

GLAZIER,
GAS-FITTER
LEADED LIGHTS,
TILING.

F. A. WEBB,
Plumber and Sanitary Engineer.

GLASS,
GREENHOUSE GLASS
PUTTY, PAINT,
VARNISHES.

PHONE 43953.

115 Leppings Lane, Hillsbro', Sheffield 6.

(Next to Sheffield Wednesday Football Club's Gates.)



SUPPORTERS' CLUB NOTES.

During this very anxious period in the history of the club, we wish to assure the Directors and all concerned of our loyalty, and sincerely hope the time is not far ahead, when they can look forward to happier times.

Our Annual Dinner arrangements are now complete, and gives indications of being a real jolly evening. The Brightside and Carbrook Cafe, in which the Dinner is to be held, has been recently enlarged, and now holds seating for 350. We are hoping to fill this to capacity.

Jack Allen has now definitely promised to attend and hopes to

meet many of his old friends there. Alf. Strange writes his regrets, and states that owing to business reasons he will be unable to attend. He wishes the Old Club better luck in the future, and hopes they will soon regain their rightful place, in Division I.

Tickets are going well, and if you have not yet purchased yours we ask you to do so without delay. They must be obtained before Wednesday next, 17th November (on account of catering arrangements), from Members of the Committee or from the Club Room behind the Old Stand this afternoon. Price 2/6d. each.

The date is Monday 22nd November, at the Brightside and Carbrook Restaurant, Exchange Street, 7.30 p.m.

The Juvenile Members treat will again be held this season, arrangements are in hand and we hope to hold it during the Christmas holidays. There will be no charge, admittance being by Membership Card. Should these ar-

rangements be completed in time, full details will be published in the next first team programme. C.M.

SHEFFIELD'S GREAT GOLDEN JUBILEE Chrysanthemum SHOW

Nov. 18th, 19th & 20th Edmund Road Drill Hall.

CHOICE ORCHID DISPLAY.

Attercliffe Institute Silver Prize Band. Refreshment Bar. Teas, &c.

Thursday ... 2 p.m. to 10 p.m.
Friday ... 10 a.m. to 10 p.m.
Saturday ... 10 a.m. to 9 p.m.

ADMISSION: 1/- Each Day

Sheffield Chrysanthemum Society.

OUR NEXT HOME MATCHES

DATE	OPPONENTS	KICK-OFF
Sat. 20th Nov.	West Brom. Res. (Central League)	2.30
Sat. 27th Nov.	NOTTINGHAM F. (Division 2)	2.15

THE LEAGUE—DIVISION I.

	P.	W.	L.	D.	F.	A.	Pts.
Brentford	15	9	4	2	30	21	20
Chelsea	14	8	3	3	33	23	19
Wolverhampton W.	14	7	3	4	22	16	18
Preston North End	14	6	3	5	28	18	17
Leeds United	14	6	3	5	21	16	17
Stoke City	14	6	4	4	26	15	16
Bolton Wanderers	14	6	4	4	29	22	16
Charlton Athletic	14	5	3	6	20	17	16
Sunderland	14	7	5	2	24	26	16
Manchester City	14	6	5	3	26	24	15
Arsenal	14	5	5	4	26	18	14
Middlesbrough	14	6	6	2	23	22	14
Huddersfield Town	14	5	6	3	19	21	13
Grimsby Town	14	4	5	5	16	21	13
West Bromwich A.	14	6	7	1	26	33	13
Derby County	14	4	5	5	21	31	13
Birmingham	14	3	5	6	19	20	12
Leicester City	14	4	6	4	21	26	12
Everton	14	5	8	1	21	25	11
Liverpool	14	4	8	2	20	30	10
Blackpool	15	3	8	4	17	26	10
Portsmouth	14	0	9	5	17	34	5

THE LEAGUE—DIVISION II.

	P.	W.	L.	D.	F.	A.	Pts.
Coventry City	14	7	0	7	20	11	21
Aston Villa	14	8	3	3	23	11	19
Chesterfield	14	8	3	3	27	15	19
West Ham United	14	6	2	6	22	11	18
Sheffield United	15	8	5	2	16	19	18
Bradford	14	5	2	7	19	15	17
Burnley	15	6	5	4	21	21	16
Tottenham Hotspur	14	6	5	3	28	20	15
Blackburn Rovers	14	5	4	5	27	24	15
Stockport County	14	6	5	3	15	17	15
Swansea Town	14	4	4	6	18	17	14
Norwich City	14	6	6	2	26	30	14
Manchester United	14	5	6	3	15	12	13
Nottingham Forest	14	4	5	5	13	15	13
Bury	14	5	6	3	12	15	13
Luton Town	14	5	7	2	27	28	12
Barnsley	14	5	7	2	24	28	12
Southampton	14	4	7	3	22	32	11
Newcastle United	14	3	7	4	19	20	10
Fulham	14	2	7	5	13	23	9
Plymouth Argyle	14	2	8	4	15	25	8
Sheffield Wednesday	14	2	8	4	13	26	8

CENTRAL LEAGUE

	P.	W.	L.	D.	F.	A.	Pts.
Everton	15	12	3	0	43	17	24
Chesterfield	14	9	5	0	27	28	18
Huddersfield Town	14	7	4	3	23	15	17
Aston Villa	15	8	6	1	39	33	17
Sheffield United	14	8	5	1	27	26	17
Bolton Wanderers	14	7	5	2	30	21	16
Liverpool	14	6	4	4	27	28	16
Burnley	14	7	5	2	26	30	16
Stoke City	14	6	5	3	19	25	15
Manchester United	14	6	6	2	28	24	14
Sheffield Wednesday	14	6	6	2	24	21	14
Newcastle United	14	6	6	2	21	24	14
Blackpool	14	5	6	3	22	15	13
Leeds United	14	5	6	3	21	23	13
Preston North End	14	6	7	1	22	26	13
West Bromwich A.	13	4	5	4	17	19	12
Birmingham	13	4	5	4	25	28	12
Derby County	14	4	8	2	25	27	10
Bury	14	4	8	2	23	32	10
Blackburn Rovers	14	5	9	0	24	35	10
Manchester City	14	3	7	4	17	28	10
Wolverhampton W.	14	2	9	3	22	29	7

Second League Fixtures, 1937-38. Central League Fixtures, 1937-38.

Date	Day	OPPONENTS.	Grd	For	Agt	Date	Day	OPPONENTS.	Grd	For	Agt
1937.						1937.					
Aug.28	S	Chesterfield.....	A	0	1	Aug.28	S	Everton.....	H	0	1
Sept. 2	Th	Fulham.....	H	2	1	Sept. 1	W	Huddersfield T.....	A	0	2
4	S	Swansea Town.....	H	1	1	4	S	Wolverhampton W.....	A	1	1
6	M	Fulham.....	A	0	0	9	Th	Huddersfield T.....	H	4	1
11	S	Norwich City.....	A	1	3	11	S	Chesterfield.....	H	5	0
16	Th	Tottenham H.....	H	0	3	13	M	Blackburn Rovers..	A	3	2
18	S	Aston Villa.....	H	1	2	18	S	Aston Villa.....	A	0	3
25	S	Bradford.....	A	1	1	25	S	Derby County.....	H	2	1
Oct. 2	S	West Ham United..	H	1	0	Oct. 2	S	Manchester City ...	A	0	2
9	S	Southampton.....	A	2	5	9	S	Preston N. E.	H	3	1
11	M	Barnsley (C.C.)...	H	0	2	16	S	Sheffield United ...	A	1	2
16	S	Sheffield United...	H	0	1	16	S	Burnley.....	H	0	3
23	S	Manchester United..	A	0	1	23	S	Bury.....	A	4	1
30	S	Stockport County .	H	3	3	30	S	Bury.....	A	4	1
Nov. 6	S	Barnsley.....	A	1	4	Nov. 6	S	Leeds United.....	H	1	1
13	S	Luton Town.....	H	13	S	Liverpool.....	A
20	S	Coventry City.....	A	20	S	West Brom. A.	H
27	S	Nottingham F.....	H	27	S	Birmingham.....	A
Dec. 4	S	Newcastle United..	A	Dec. 4	S	Newcastle United..	H
11	S	Bury.....	H	11	S	Stoke City.....	A
18	S	Burnley.....	A	18	S	Manchester U.....	H
25	S	Plymouth Argyle .	A	25	S	Blackpool.....	H
27	M	Plymouth Argyle .	H	27	M	Blackpool.....	A
1938.						1938.					
Jan. 1	S	Chesterfield.....	H	Jan. 1	S	Everton.....	A
8	S	E.C. (3rd Round)	15	S	Wolverhampton W	H
15	S	Swansea Town.....	A	22	S	Chesterfield.....	A
22	S	Norwich City.....	H	29	S	Aston Villa.....	H
22	S	E.C. (4th Round)						
29	S	Aston Villa.....	A						
Feb. 5	S	Bradford.....	H	Feb. 5	S	Derby County.....	A
12	S	West Ham U.....	A	12	S	Manchester City ...	H
12	S	E.C. (5th Round)	19	S	Preston N. E.	A
19	S	Southampton.....	H	26	S	Sheffield United...	H
26	S	Sheffield United...	A						
Mar. 5	S	Manchester U.....	H	Mar. 5	S	Burnley.....	A
5	S	E.C. (6th Round)	12	S	Bury.....	H
12	S	Stockport County .	A	19	S	Leeds United.....	A
19	S	Barnsley.....	H	26	S	Liverpool.....	H
26	S	Luton Town.....	A						
26	S	E.C. (Semi-Finals)						
April 2	S	Coventry City.....	H	April 2	S	West Brom. A.	A
9	S	Nottingham F.....	A	9	S	Birmingham.....	H
16	S	Newcastle United..	H	15	F	Bolton Wanderers..	A
18	M	Blackburn Rovers..	A	16	S	Newcastle United..	A
19	T	Blackburn Rovers..	H	18	M	Bolton Wanderers..	H
23	S	Bury.....	A	23	S	Stoke City.....	H
30	S	Burnley.....	H	30	S	Manchester U.....	A
30	S	E.C. (Final)						
May 7	S	Tottenham H.....	A	May 7	S	BlackburnRovers .	H

OUR GOAL SCORERS TO DATE.

First Team.

RIMMER	4
MATTHEWS	3
ROBINSON	2
DRURY	1
WARE	1
HOOPER	1
THOMPSON	1

Reserve Team

DRIVER	6
GREEN	3
TEPPER	3
LUKE	3
DRURY	2
DRISCOLL	2
CURRY	1
CHEDGZOY	1
BURROWS	1
GIBB	1
ROY	1

"A" Team.

ROY	5
CURRY	4
WARD	3
DRISCOLL	3
GREEN	2
C. TOMLINSON	2
MOSS	2
D. HOWSAM	2
HOOPER	2
CHEDGZOY	1
LOWES	1
WALKER	1
PICKERING	1
E. BATTY	1
E. BEARD	1
D. V. JACQUES	1

TABERNACLE CONGREGATIONAL CHURCH

(HILLSBORO' ROUTE) ALBERT TERRACE ROAD (TRAM STOP)

SUNDAY SERVICES—10.45 a.m. 6.30 p.m.

MINISTER:

REV. S. TREDINNICK.

UNDER SAME PASTORATE:

SHIREGREEN CONGREGATIONAL CHURCH, VALENTINE CRESCENT.

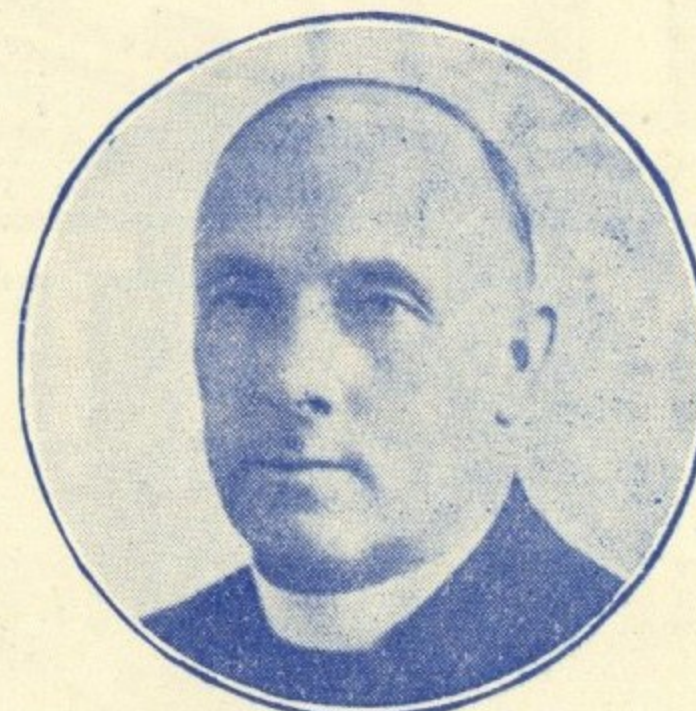
Saturday's Engagement—THE MATCH

Sunday's Engagement—WORSHIP

— WHY NOT? —

This Space is paid for by

WEDNESDAY and UNITED SUPPORTERS



This Preacher's Certainty—
"The CROSS for a DRAW"

KITSONS

SUPER SERVICE STATION

PENISTONE ROAD

SHEFFIELD 6

CAR VALETING

HIGH PRESSURE GREASING

BRAKE TESTING SPECIALISTS

PETROL and OILS (all grades)

USED CAR STOCKISTS

COMPETENT MECHANICS

NEAREST CAR PARK TO GROUND

Our forward policy and the team work of our staff continue to receive the increasing support of the public

HARDWICK TASKER

ABBAY LANE

CEMETERY GATES

also at

CITY ROAD

'Phone 45281

For every description of Memorial and Architectural Stone work

Bring Comfort into your Homes
Make your Shops Attractive
Reduce the Daily Toil

DO IT BY ELECTRICITY

Registered Electrical Contractors and Electricians to the Sheffield Wednesday Football Club.

Electricity is a servant that never gives notice, and only asks for payment when working. The services of the leading firm in this district are at your command. It costs you nothing to let us quote, so send your enquiries for:

LIGHTING, HEATING, POWER TRANSMISSION,
- - - BELLS and TELEPHONES - - -

Anything in Electricity—
—from a Flash Lamp to an Electric Crane.

Wilkinson, Bentley & Co., Ltd.,
54-58, CAMPO LANE, SHEFFIELD, 1. TELEPHONE: 2 2 7 9 7

WARDONIA

"PILOT" IVORY SET

Scores the Highest Points Among

Sportsmen

Only **2/6^D**



The "Wardonia" Pilot Ivory Set is very popular among sportsmen as it gives a clean, close shave quickly. This attractive set is made in bakelite and comprises a Wardonia Razor with special "non-slip" handle and four Wardonia World-Famous Blades. Buy one now modelled in your favourite colour from your nearest dealer - 2/6

GREAT FREE OFFER



With every 2/6 packet of Wardonia World-Famous Blades purchased you get this useful bakelite used blade container absolutely FREE. Wardonia World-Famous Blades are sold in packets of 4 for 1/- and 10 for 2/6.



Made By THOMAS WARD & Sons Ltd., Wardonia Works, SHEFFIELD. I

Greenup & Thompson, Ltd., Printers, Wellington Street, Sheffield I.