



# LUTON TOWN FOOTBALL ·AND· ATHLETIC CO. LTD.

OFFICIAL  
JOURNAL

PRICE 2d



League—Division II

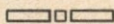
October 2nd, 1937

LUTON TOWN v. BURY

“TRUE-FORM”  
THE FINEST FOOTWEAR  
IN THE TOWN



BUY DIRECT FROM THE MAKERS



LOCAL BRANCH:

44, GEORGE STREET

Head Office and Factories: NORTHAMPTON



Insist upon the  
Building Materials for  
your new house coming from

## POWDRILL'S

BUILDERS' MERCHANTS  
COAL and COKE MERCHANTS  
BRICK MANUFACTURERS  
SAND & GRAVEL QUARRY OWNERS

GEORGE POWDRILL & SON LTD., 1, 3 & 5, HITCHIN ROAD, LUTON  
TELEPHONE 2073 (2 Lines)

## A RESERVED SEAT — FREE

AT

CHAPEL STREET METHODIST CHURCH

10.45 a.m.

6 p.m.

Rev. PERCY C. MELLOR

Rev. G. G. BARNES, B.A.

HEARTY SINGING

HELPFUL SERMONS

FOR  
ALL SUPPORTERS

## Luton Town Football and Athletic Co.,



LIMITED

Telephone No. 3151-2.

President: Alderman Harry Arnold, C.A., J.P.

Directors:

Chairman: Alderman Chas. Jeyes, C.C.

Messrs E. Hugh Woods, (Vice-Chairman) Frank J. Andrews, Stanley H. Godfrey, C.A.,  
Horace S. Hewson, Percival G. Mitchell, Henry Richardson, C.C., Philip W. Wright.

Team Manager: Mr. E. Liddell.

Secretary: Mr. A. E. Wickson.

Honorary Medical Officer: E. J. Crarer, M.B., Ch.B.

Honorary Solicitors: Messrs Machin & Co., 17-19, George Street West, Luton.

TODAY we entertain Bury, nicknamed the "Shakers" and to them we extend a very hearty welcome on their first visit to our town. The Lancashire Club, like ourselves, has not commenced the season too auspiciously having gained but five points from their eight matches, five of which have been played on their own enclosure. On form we should be successful in today's game but we must not reckon without the glorious uncertainty of football and our lads must go right out from the start if they wish to gather the spoils.

Bury, at the time of its inauguration was one of a number of small towns which endeavoured to foster Association football. Enthusiasts had been attracted to the sport from witnessing games in Sheffield and Bolton and discussions first took definite shape when a public meeting was held at the White Horse Hotel. The Association Club then became sub-tenants of a field on one of the Earl of Derby's farms and ever since have used this enclosure at Gigg Lane.

The first match was an exhibition game on June 6th, 1885, and it is recorded that the "gate" receipts were £11-9-0½; and another interesting note in the history of the Club is that on the first balance sheet there was an adverse balance of £8-0-1.

It was Bury, too, who were responsible for the formation of the Lancashire League in 1889, a scheme which did a great deal to develop Association Football in that part of the country. They headed this League in 1890-91 and the following season entered for the Lancashire Senior Cup and surprised everyone by winning the trophy at the first time of asking. Steady progress was made during the next few years and in 1894 the Club was elected to the Second Division of the Football League, the championship of which they won in their first season.

The Club was reconstructed as a limited liability company in 1897, but anxious times were experienced in the early years of the twentieth century and by 1911 there was a deficit of £3262. The season 1919-20 saw reconstruction of the Club and after five years they won their way back to the upper circle only to be relegated once more five seasons later. Notable achievements in their history were winning the Cup in 1900 and again in 1903, when they beat Derby County by the record score in a Cup Final, 6 goals to nil.

It is not generally known why the Club obtained the nickname "The Shakers." It was in a moment of enthusiasm whilst watching a game that Mr J. S. Ingham the Chairman, said, "We'll give them a shaking, in fact we are the Shakers." The phrase so amused the spectators that it was repeated all over the ground and the club has been known by this sobriquet ever since.

### ANSWER TO CORRESPONDENT

"Nuff"—The twelve oldest League Clubs are:—  
Notts County 1862, Stoke City (originally Stoke) 1863, Notts Forest 1865, Sheffield Wednesday 1866, Chesterfield 1866, Reading 1871, Aston Villa 1874, Wrexham 1874, Blackburn Rovers 1875, Birmingham 1875, Middlesbrough 1876 and Crewe Alexandra 1876.

No 405



## ATTENDANCE BAROMETER

					1936			1937		
					£	s.	d.	£	s.	d.
Aug. 29	Aug. 28	Southend United Reserves	...	...	14353	705	11	7346	167	0
Aug. 31		Southend United	...	...	3469	89	11			3
		Southend United Reserves	...	...				25349	1299	14
	Sept. 1	Aston Villa	...	...				20610	994	1
	Sept. 4	Manchester United	...	...						2
Sept. 5		Portsmouth Reserves	...	...	6048	161	8			
Sept. 7		Walsall	...	...	11043	486	8			
	Sept. 8	Clapton Orient Reserves	...	...				4823	93	6
	Sept. 11	Chelsea Reserves	...	...				7725	175	7
Sept. 12		Crystal Palace	...	...	13790	707	18			
	Sept. 18	Tottenham Hotspur	...	...				23788	1235	7
Sept. 19		Tottenham Hotspur Reserves	...	...	5659	150	14			
Sept. 21		Leceister City Reserves	...	...	1585	39	18			
	Sept. 22	Leceister City Reserves	...	...				3626	69	19
	Sept. 25	Queens Park Rangers Reserves	...	...				6558	142	1
Sept. 26		Reading	...	...	16378	820	18			
					72325	3162	9	99825	4176	18

N.B. The attendance figures for both League II and London Combination matches, include the number of Season Tickets issued. The gate receipts are the net amounts received after Entertainment Tax has been deducted.

## PLAYERS' APPEARANCES

	League II		London Combination		F.A. Cup		Other Matches		Total	
	App.	Goals	App.	Goals	App.	Goals	App.	Goals	App.	Goals
Childs, C.	...	...	6						6	
Coen, J. L.	...	7	2						9	
Cox, G.	...	...	4	4					4	4
Dawes, A. G.	...	3							6	3
Dolman, H. W.	...	1	7						8	
Dreyer, G.	...	...	4						4	
Fellowes, W. J.	...	8							8	
Ferguson, C.	...	...	7	1					7	1
Finlayson, J.	...	8							8	
Griffiths, E. O.	...	3	1	3					8	4
Hall, L.	...	...	3						3	
Hancock, E.	...	5	1	3	1				8	2
Hogg, F.	...	3		5	1				8	1
Kidd, G. I.	...	...	5						5	
King, T. P.	...	7	3						10	
Loughran, J.	...	...	6	1					6	1
Lutterloch, B. R.	...	...	9						9	
McKay, N. V.	...	...	3						3	
Mackey, T. S.	...	3	5						8	
Nelson, J.	...	8							8	
Parris, J. E.	...	1	4	1					5	1
Payne, J.	...	7	4						7	4
Redfern, W. J.	...	2	2						2	2
Rich, L. T.	...	...	7	4					7	4
Roberts, F.	...	5	4						9	
Smith, T. S.	...	6	1						7	
Stephenson, G. H.	...	5	1	2					7	1
Stevens, R. F.	...	3	1	5	5				8	6
Strathie, J.	...	...	9						9	
Amateurs and Others	...	...	1						1	

Next Match, Saturday, October 9th, 1937.

LONDON COMBINATION

**LUTON TOWN RES. v. BRIGHTON & HOVE ALBION RES.**

KICK-OFF 3.15 p.m.

ADMISSION Centre Stand 1/6

Stand and Enclosure 1/- Ladies and Boys 6d. :: Ground 6d. Boys 3d.

All Prices include Entertainment Tax

LUTON TOWN FOOTBALL AND ATHLETIC Co., Ltd.

OFFICIAL JOURNAL

## LUTON SCHOOLBOY FOOTBALL

With the end of September comes a halt in the football circles of the Luton Senior Schools. This season the school football has been organised into a Senior League for boys over 12½ years of age, and an Intermediate League for boys under that age.

In both leagues Old Bedford Road and Denbigh Road, last seasons champions, are setting the pace, neither having tasted defeat yet. The boys, judging by the scores in both leagues, are not goal shy.

While the boys have been putting in their best efforts for their schools, the selection committee have visited every match in the Senior League. As a result of their visits, 22 boys are now striving their utmost to gain a place in the Luton Boys Team, who will entertain South Northants on the Town Ground, on October 9th, Kick Off 11.15 a.m. By the time these notes are published three practices will have been held and the best boys in training. Although two of last season's team are still with us, there are no certainties for the team, as the excellent spirit of the boys, though sometimes playing in unfamiliar positions, is giving the selectors plenty to work on. Although we have no outstanding boys we are confident those who are finally selected to represent their town on October 9th, will, as as their predecessors have always done, put up a good fight from the "Off" to the "Stop;" and we can all look forward to a good game against worthy opponents.

### SENIOR LEAGUE

September 12th			
Northfields ...	1	Old Bedford Road	2
Surrey Street ...	7	Britain Street	2
Denbigh Road ...	4	Beech Hill ...	3
Stopsley ...	1	Waller Street	6

September 15th			
Britain Street ...	1	Denbigh Road	5
Beech Hill ...	7	Northfields ...	1

September 18th			
Waller Street ...	1	Beech Hill ...	2
Northfields ...	2	Surrey Street	3
Old Bedford Road	10	Britain Street	0
Stopsley ...	1	Denbigh Road	5

September 22nd			
Surrey Street ...	3	Old Bedford Road	4
Denbigh Road ...	3	Waller Street	2
Beech Hill ...	5	Stopsley	3

Pld.	Won	Lost	Drn.	For	Agst.	P.
Old Bedford Road ...	3	3	0	0	16	4
Denbigh Road ...	3	3	0	0	12	6
Beech Hill ...	3	2	1	0	12	6
Surrey Street ...	3	2	1	0	13	8
Waller Street ...	2	0	2	0	3	5
Northfields ...	3	0	3	0	4	12
Britain Street ...	3	0	3	0	3	22

### INTERMEDIATE LEAGUE

September 12th			
Old Bedford Road	4	Northfields ...	3
Denbigh Road ...	3	Beech Hill (h)	0

September 15th			
Denbigh Road ...	4	Britain Street	0
Northfields ...	7	Beech Hill ...	2

September 18th			
Beech Hill ...	5	Waller Street	3
Surrey Street ...	0	Northfields ...	10
Britain Street ...	3	Old Bedford Road	4

September 22nd			
Old Bedford Road	7	Surrey Street	1
Waller Street ...	2	Denbigh Road	5

Pld.	Won	Lost	Drn.	For	Agst.	P.
Denbigh Road ...	3	3	0	0	12	2
Old Bedford Road ...	3	3	0	0	15	7
Northfields ...	3	2	1	0	20	6
Beech Hill ...	3	1	2	0	7	13
Waller Street ...	2	0	2	0	5	10
Britain Street ...	2	0	2	0	3	8
Surrey Street ...	2	0	2	0	1	17

Saturday, October 9th

English Schools Shield—Round 1

**LUTON BOYS**

**SOUTH NORTHANTS BOYS**

on the Luton Town Ground

Kick-Off 11.15 a.m.

Admission Boys 3d. Adults 6d.

PROGRAMME by  
**THE LUTON BAND**

Conductor—Albert Coupe

Gentlemen:

Our "Can you Score?" on the collection sheets has proven quite a success, as the increased amount of the collections at the recent matches have broken all records. This new state of affairs gives us a little more incentive to go all out to give you the best musical entertainment we possibly can in the time. A large portion of the recent collections have been allocated to the purchase of new music stands, which will be used at the football matches exclusively, in order that we can play Musical Comedy Selections etc., and thereby provide you with alternative programmes which, we feel sure, will be a welcome change from the eternal jazz tunes or marches. Many of you, I feel sure, have special tunes which you are particularly fond of. Please mention these tunes to one of the collectors, or drop me a card, when I assure you that your request will have our careful attention.

I have received many enquiries as to the number of "Goals" scored on the sheets, so here is the result:—

Grand Stand Terrace	31	"goals"
Large Terrace	23	"
Bobbers' Stand	19	"
Scotch Colony Terrace	35	"

Request Items in today's Programme

MARCH—"BLAZE AWAY"  
"PIPER'S WEDDING"



If your thoughts are centred on house purchase you cannot do better than to pass us your requirements. You will find we have just the house you are looking for, and will be pleased with the courteous and efficient manner in which your business is attended to

## SELL & MITCHELL

Auctioneers, Land & Estate Agents, Surveyors & Valuers

7-9, PRINCESS STREET  
LUTON

TELEPHONES 2003-4

Also 95, HIGH STREET NORTH  
DUNSTABLE

Telephone 354

District Agents for Woolwich Equitable Building Society

ESTABLISHED 1879

TO  
LET

### To-Day's Half-Time Scores FIRST LIST

A	Birmingham v. Grimsby Town	.....
B	Blackpool v. Derby County	.....
C	Bolton W. v. Leicester	.....
D	Huddersfield T. v. Wolves	.....
E	Liverpool v. Everton	.....
F	Middlesbrough v. Preston	.....
G	Portsmouth v. Chelsea	.....
H	Stoke City v. Charlton A.	.....
K	West Bromwich v. Leeds U.	.....
L	Barnsley v. Burnley	.....
M	Blackburn R. v. Southampton	.....
N	Chesterfield v. Norwich City	.....

NOTE—The Letter in the Programme corresponds with the letter on the Board—thus A 0-1 means that the first-named Club has scored 0 and their opponents 1.

MONO  BRAND  
REGD.

### SPECIALITIES

Paint and Enamel  
Manufacturers  
"Stuart" Series  
Wallpapers

OGDEN &  
CLEAVER

Stuart Street, LUTON

TELEPHONE 580

# Alma G. Peck

BUILDER — CONTRACTOR — DECORATOR

5 and 7, WENLOCK STREET  
LUTON

PHONES 1752 - 3095



## Clothes for Men with a Taste for Style!

The more critical you are, the more you will be satisfied with your purchases from Blundells. Up-to-date styles...dependable qualities...supreme values, await you here. Every item of wear, from socks to hat, at the keenest of prices.

**BLUNDELL Bros.** (LUTON) LTD.  
MEN'S DEPT. 12, CHEAPSIDE, LUTON.

'WHITE'S'  
have again  
supplied

Luton Town  
Football Club  
with their Boots

They know  
the Best

H. WHITE (Luton) LTD.,  
Footwear Specialists,  
MANCHESTER STREET.

### To-Day's Half-Time Scores SECOND LIST

A	Manchester U. v. Sheffield U.	.....
B	Newcastle U. v. Coventry C.	.....
C	Notts Forest v. Swansea Town	.....
D	Plymouth A. v. Aston Villa	.....
E	Sheffield W. v. West Ham	.....
F	Stockport C. v. Tottenham H.	.....
G	Aldershot v. Gillingham	.....
H	Bristol R. v. Queens Park R.	.....
K	Cardiff City v. Notts County	.....
L	Mansfield T. v. Southend U.	.....
M	Northampton v. Brighton	.....
N	Reading v. Bristol City	.....

● When passing  
through

**HARPENDEN**

pay a visit to

"The  
**MARQUIS of  
GRANBY**"

PROPRIETOR - TOM HODGSON  
(Ex-Capt., Luton Town F.C.)

FULLY LICENSED

TEA GARDENS

Some say, "Give it to Joe,"

We say, "Give it to FARR'S."

Joe scored the hat tricks to win promotion,

WE do the hat tricks to set the fashion

On "FARRBEST" HAT MACHINERY

GEO. F. FARR, The "Farrbest" Hatter's Engineer  
COLLINGDON STREET, LUTON

ESTABLISHED 1909

Telephone:  
Luton 2055 (2 lines)

Telegrams:  
"Farrbest," Luton



# MARES

for  
**Caps**

Charles **MARES** Limited

George Street & Dunstable Road  
LUTON And at St. Albans

TODAY

## PALACE THEATRE

LUTON

SIMONE SIMON — IN — JAMES STEWART

### "SEVENTH HEAVEN"

(A)

NEXT WEEK NEXT WEEK

Gordon Harker in "THE FROG"

(A)

Our Brew owes its outstanding  
successes to no fancy claims

## J.W. GREEN'S

IS

### JUST GOOD BEER

AND

## beer is best

Obtainable of all Tenants and Agents, and  
J. W. GREEN LIMITED, The Brewery, LUTON

Telephone - Luton 3131

## L-M-S

### RAILWAY

COVENTRY CITY

v.  
LUTON TOWN

Saturday, October 9th

LUTON dep. 11.10 a.m.

COVENTRY arr. 1.17 p.m.

COVENTRY dep. 7.55 p.m.

Fare 4/9 Return

### Football here again

SO NOW IS THE TIME  
TO BUY YOUR WINTER  
SPORTS REQUISITES  
FOOTBALL, RUGBY  
HOCKEY and DARTS  
GOODS a Speciality

The Jerseys, Knicks, Hose and  
Manfield Boots worn by  
the Players of Luton Town  
F.C. were supplied by us  
Agents for "T" Footballs  
and Manfield Hotspur  
Football Boots

SEE WINDOWS

**G. A. WILD**  
AND SONS

Sports Outfitters

LUTON and DUNSTABLE

### BOOK AT BAILEY'S

FOR

LONDON COASTAL COACHES  
ALL INDEPENDENT SERVICES  
JERSEY AIRWAYS  
LONDON THEATRES  
AND  
AMUSEMENTS

Daily Services to all  
parts of Great Britain

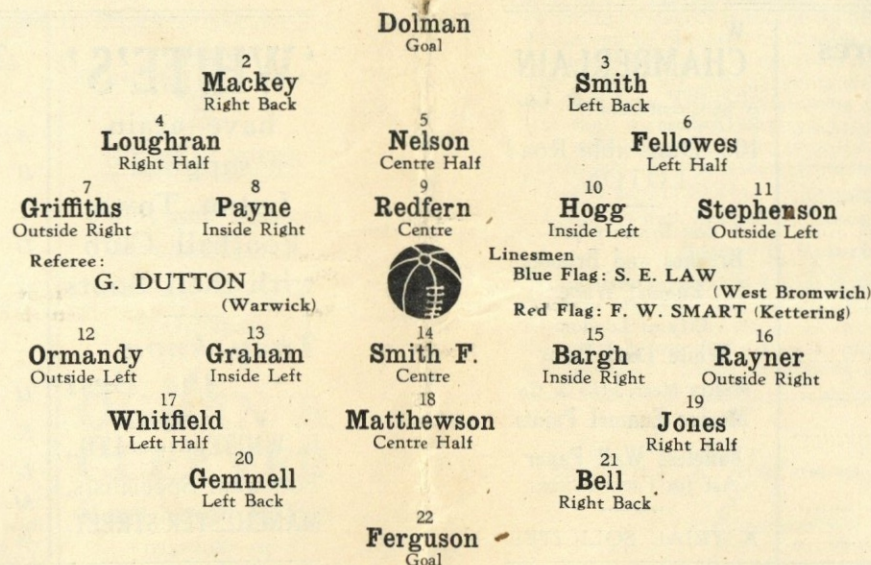
TOBACCONIST  
AND BOOKING AGENT

38, NEW BEDFORD ROAD  
LUTON

Phone 1972

LUTON TOWN (White Shirts  
Black Knickers)

League—Division II



BURY (Blue and White Striped Shirts,  
Blue Knickers)

Kick-Off 3.15 p.m.

### WE'RE THERE!

## BIRD'S

for  
BUILDING  
AND DECORATIVE  
MATERIALS

CHARLES BIRD & SONS, Limited

Collingdon Street, LUTON

Telephone 1255

— Also —

Corrugated Iron, Wire Netting,  
Chain Link Fencing, Chestnut  
Paling, Creosote and Garden  
Sundries

HARRY CANHAM

Cardboard Box

Packing Case, Ply Box and

Crate Manufacturer

9a, MARKET HILL, LUTON

TELEPHONE 458

For a GOOD DINNER  
TEA or SUPPER

try

**J. BEDDALL**

PARTIES CATERED FOR  
SATISFACTION ASSURED

67, LEAGRAVE ROAD  
LUTON

A few minutes walk from the  
Football Ground

## WINES AND SPIRITS

R. H. Marks Ltd.

69, George Street  
and at 81, High Town Road

Luton

AGENTS FOR

MANN, CROSSMAN & PAULIN LTD.  
BEERS and STOUTS

We are  
"PASSING"  
something worth having  
when we offer an  
INVESTMENT

in the  
LUTON & MIDLANDS  
BUILDING SOCIETY

Telephone: Luton 1067

11, George St.  
West  
LUTON

WEBDALE'S  
of WELLINGTON STREET

FOR

Kitchen Equipment

AND ALL

Household Requirements

AT LOWEST PRICES

21 to 27 WELLINGTON STREET

'Phone: Luton 41

LUTON



**Charnley**  
and Sons  
REGISTERED  
OPTICIANS

National Health  
Insurance

On the Official List of  
H.S.A. Opticians

11, Wellington Street  
LUTON  
Telephone 1808

We are offering  
GENUINE 10/6  
FOUNTAIN PENS

for

5/6

Nibs to suit all  
OOOO

**W. F. BUNKER**  
"Fountpen Hospital"  
26a, Chapel St., Luton  
PHONE 224

**E. A. GREEN**  
BOOKSELLER  
NEWSAGENT  
STATIONER

Luton's Most  
Progressive Circulating  
Library

21a, New Bedford Road  
and 228, Biscot Road  
LUTON  
Telephone 476

**F. WHITE**

Builder  
and  
Contractor

141,  
Stockingstone Road  
LUTON



All Classes of  
Repairs, Painting and  
Decorating Under-  
taken

ESTIMATES FREE

### To-Day's Half-Time Scores THIRD LIST

A	Swindon Town v. Exeter City	.....
B	Walsall v. Bournemouth	.....
C	Doncaster R. v. Chester	.....
D	Hartlepool U. v. Darlington	.....
E	Hull City v. Gateshead	.....
F	Tranmere R. v. New Brighton	.....
	3.30 KICK-OFFS	
G	Arsenal v. Manchester City	.....
H	Brentford v. Sunderland	.....
K	Fulham v. Bradford	.....
L	Crystal Palace v. Newport	.....
M	Millwall v. Watford	.....
N	Torquay U. v. Clapton Orient	.....

**W. CHAMBERLAIN**  
Proprietors—  
A. M. Chamberlain  
R. Deadman

106, Dunstable Road  
LUTON

Best British Made  
Brushes and Brooms  
Enamel Ware

City of London  
White Lead Paint

Messrs Merrediths & Co.  
Merlac Enamel Paints

Fadeless Wall Paper  
Ask for Pattern Books

A TRIAL SOLICITED

**W. HOLES**

3, Gordon Street, Luton  
Coal and  
Coke Merchant

Authorised Agent for  
Luton Gas Company's  
large and graded coke

Agent for  
L.M.S. Passenger Dept.

Telephone 210



Telephone: Luton 2126.

**P. W. SMITH,**  
BUILDER

HIGH CLASS DECORATOR

CONTRACTOR

418, Dunstable Road,

Luton.



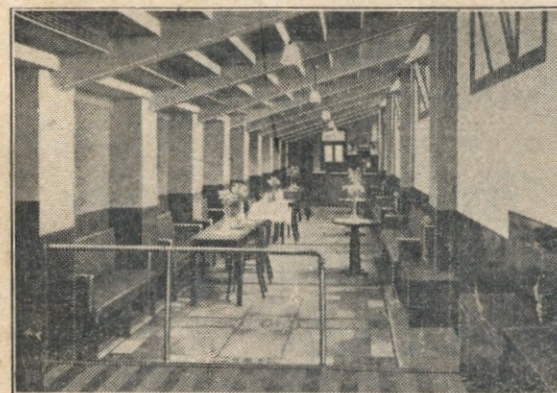
### BOBBERS STAND CLUB

President: P. W. Wright, Esq.

Hon. Secretary-Treasurer: J. Collier.

Committee: Messrs F. Cooper, F. Dean,  
A. Flitton, E. Gibbs, J. Meades, S. Setchell.

'Phone 2566.



for all away matches if only we can get the support  
from you, so help us by obtaining your **tickets**  
from us.

Now for your comforts inside, we have opened  
today, two more large Tea Bars under the New  
Terraces, where you can **all** get a cup of tea and  
eatables. There is plenty of room for you to stand  
in comfort and drink it, and we also have a quick  
service. We now have the largest catering facilities  
that can be found on any football grounds, which  
you must agree is a feather in the cap of the Bobbers.  
This remark has been passed to us by some of the  
much travelled football officials, so now do your  
best by using them to your advantage. The  
Committee also wishes to point out that they have  
still room for more names in the Club register, also  
room in the Club for a visit from some of you  
during the week, where you have the pleasure of  
not only watching a game, but taking part in one  
yourself. We are now commencing our series of  
indoor games, so do not fail to join in our parties  
and try to win one of our Silver Cups.

Now one more reminder—

**JOIN the BAND of BOBBERS**

Only 1/2 per year

We have now had come to hand the time of  
departure of the train for Coventry and we hope all  
who intend taking advantage of this excursion will  
obtain their tickets from the Bobbers Stand Club.  
These can be obtained by anyone who wishes to go  
and is not restricted to members of the Club only.  
The Tickets are already going well and it appears  
we shall have a larger following than we did the  
last time we paid Coventry a visit—quite a few of  
you well remember that occasion. Now for the  
particulars. The train starts from the L.M.S. Station.

Luton dep. 11.10 a.m. Coventry arr. 1.17 p.m.  
Coventry dep. 7.55 p.m. Luton arr. 10.20 p.m.

**Fare 4/9 Return**

Tickets are now ready at the Bobbers Stand Club.  
Anyone who wishes to make up a party and obtain  
Reserved Seats may do so at the same price, only  
we **must know early** so as to make the necessary  
arrangements. These excursions will be organised

*Luton's Oldest and Largest  
Restaurant*

SEATING ACCOMMODATION FOR 300

ESTABLISHED 65 YEARS

*Private Parties Catered For*

**CENTRAL  
RESTAURANT**

20-22-24, CHEAPSIDE

PHONE 172

Proprietor: S. G. Primett

**A. E.  
NICHOLLS**

Wholesale  
CONFECTIONER & TOBACCONIST

CAN SUPPLY YOU WITH  
EVERYTHING YOU WANT  
FOR THE TOBACCO AND  
CONFECTIONERY TRADE  
AT LOWEST PRICES



Prompt Delivery and Civility

**16, MILL STREET, LUTON**

'Phone: Luton 902







## FIXTURES 1937-8

## FIRST XI Division II

F. A.

Sat., Aug. 28	Stockport County	...	A	1	2
Wed., Sept. 1	Aston Villa	...	H	3	2
Sat., " 4	Manchester United	...	H	1	0
Mon., " 6	Aston Villa	...	A	1	4
Sat., " 11	Sheffield United	...	A	0	2
Wed., " 15	Newcastle United	...	A	3	1
Sat., " 18	Tottenham Hotspur	...	H	2	4
Sat., " 25	Burnley	...	A	2	3
Sat., Oct. 2	Bury	...	H		
Sat., " 9	Coventry City	...	A		
Sat., " 16	Bradford	...	A		
Sat., " 23	West Ham United	...	H		
Sat., " 30	Southampton	...	A		
Sat., Nov. 6	Blackburn Rovers	...	H		
Sat., " 13	Sheffield Wednesday	...	A		
Sat., " 20	Chesterfield	...	H		
Sat., " 27	Plymouth Argyle	...	A		
Sat., Dec. 4	Fulham	...	H		
Sat., " 11	Swansea Town	...	A		
Sat., " 18	Norwich City	...	H		
Sat., " 25	Barnsley	...	H		
Mon., " 27	Barnsley	...	A		
Sat., Jan. 1	Stockport County	...	H		
Sat., " 8	Manchester United	...	A		
Sat., " 15	Sheffield United	...	H		
Sat., " 22	Tottenham Hotspur	...	A		
Sat., Feb. 5	Burnley	...	H		
Sat., " 12	Bury	...	A		
Sat., " 19	Coventry City	...	H		
Sat., " 26	Bradford	...	H		
Sat., Mar. 5	West Ham United	...	A		
Sat., " 12	Southampton	...	H		
Sat., " 19	Blackburn Rovers	...	A		
Sat., " 26	Sheffield Wednesday	...	H		
Sat., April 2	Chesterfield	...	A		
Sat., " 9	Plymouth Argyle	...	H		
Fri., " 15	Nottingham Forest	...	A		
Sat., " 16	Fulham	...	A		
Mon., " 18	Nottingham Forest	...	H		
Sat., " 23	Swansea Town	...	H		
Sat., " 30	Norwich City	...	A		
Sat., May 7	Newcastle United	...	H		

## RESERVE FIXTURES London Combination F. A.

Sat., Aug. 28	Southend United	...	5	1	H	3	1
Thur. Sept. 2	Clapton Orient	...	0	1	A	7	0
Sat., " 4	Portsmouth	...	0	3	A	0	0
Wed., " 8	Clapton Orient	...	0	1	H	3	0
Sat., " 11	Chelsea	...	3	2	H	1	1
Wed., " 15	Bournemouth	...	1	3	A	1	1
Sat., " 18	Tottenham Hotspur	...	1	5	A	3	5
Wed., " 22	Leicester City	...	1	2	H	0	1
Sat., " 25	Queens Park Rangers	...	4	0	H	2	2
Mon., " 27	Leicester City	...	1	2	A	1	4
Sat., Oct. 2	Charlton Athletic	...	0	3	A		
Sat., " 9	Brighton & Hove A.	...	1	2	H		
Wed., " 13	Bristol City	...	1	1	A		
Sat., " 16	Swansea Town	...	2	0	H		
Sat., " 23	Crystal Palace	...	1	2	A		
Sat., " 30	Reading	...	6	2	H		
Sat., Nov. 6	Fulham	...	1	1	A		
Sat., " 13	Millwall	...	5	3	H		
Sat., " 20	Brentford	...	0	3	A		
Sat., " 27	Arsenal	...	1	1	H		
Sat., Dec. 4	Southampton	...	0	5	A		
Sat., " 11	West Ham	...	1	2	H		
Sat., " 18	Watford	...	3	3	A		
Sat., " 25	Coventry City	...	1	2	A		
Mon., " 27	Coventry City	...	0	5	H		
Sat., Jan. 1	Southend United	...	1	1	A		
Sat., " 8	Northampton Town	...	3	4	H		
Sat., " 15	Portsmouth	...	1	1	H		
Sat., " 22	Chelsea	...	1	2	A		
Sat., " 29	Tottenham Hotspur	...	3	2	H		
Sat., Feb. 5	Queens Park Rangers	...	1	2	A		
Sat., " 12	Charlton Athletic	...	1	1	H		
Sat., " 19	Brighton & Hove A.	...	3	2	A		
Sat., " 26	Swansea Town	...	1	0	A		
Sat., Mar. 5	Crystal Palace	...	2	5	H		
Sat., " 12	Reading	...	1	1	A		
Sat., " 19	Fulham	...	4	0	H		
Sat., " 26	Millwall	...	2	9	A		
Sat., April 2	Brentford	...	4	2	H		
Sat., " 9	Arsenal	...	0	10	A		
Fri., " 15	Northampton Town	...	1	4	A		
Sat., " 16	Southampton	...	3	1	H		
Tues., " 19	Bristol City	...	1	1	H		
Sat., " 23	West Ham	...	1	6	A		
Sat., " 30	Watford	...	5	1	H		
Wed., May 4	Bournemouth	...	2	1	H		

## LEAGUE TABLES

## LEAGUE DIVISION II

	Pld.	Won	Lost	Dn.	For	Agst.	P.
Coventry City	8	4	0	4	10	4	12
West Ham United	8	4	1	3	15	7	11
Aston Villa	8	5	2	1	14	7	11
Bradford	8	4	1	3	13	8	11
Norwich City	8	5	2	1	20	16	11
Sheffield United	9	5	3	1	11	13	11
Tottenham Hotspur	8	4	2	2	18	9	10
Chesterfield	8	4	2	2	12	9	10
Burnley	9	4	3	2	12	12	10
Swansea Town	8	3	2	3	10	8	9
Stockport County	8	4	3	1	6	7	9
Notts Forest	8	3	3	2	9	8	8
Manchester United	8	3	4	1	12	9	7
Blackburn Rovers	8	2	3	3	14	15	7
Barnsley	8	3	4	1	12	14	7
LUTON TOWN	8	3	5	0	13	18	6
Newcastle United	8	1	4	3	12	10	5
Bury	8	2	5	1	6	10	5
Plymouth Argyle	8	1	4	3	9	14	5
Sheffield Wednesday	8	1	4	3	6	12	5
Southampton	8	1	4	3	8	16	5
Fulham	8	0	5	3	7	17	3

## LONDON COMBINATION

	Pld.	Won	Lost	Dn.	For	Agst.	P.
Millwall	10	7	2	1	23	10	15
Arsenal	9	5	1	3	30	7	13
Coventry City	8	6	1	1	22	10	13
West Ham United	10	6	3	1	27	16	13
Queens Park Rangers	9	5	1	3	22	12	13
Fulham	9	6	2	1	13	9	13
Portsmouth	9	4	2	3	18	12	11
Reading	10	5	4	1	18	81	11
Leicester City	10	5	4	1	20	22	11
LUTON TOWN	10	3	3	4	21	15	10
Tottenham Hotspur	9	2	2	5	15	12	9
Northampton	10	3	4	3	15	16	9
Watford	10	3	3	4	15	82	9
Crystal Palace	7	4	3	0	12	11	8
Bristol City	10	2	5	3	14	15	7
Bournemouth	8	2	3	3	14	15	7
Clapton O.	6	3	2	1	7	12	7
Brentford	8	2	4	2	9	14	6
Charlton Athletic	9	3	6	0	10	2	6
Brighton & Hove A.	7	1	3	3	12	18	5
Southampton	10	1	6	3	16	24	5
Chelsea	8	1	4	3	7	14	5
Southend United	8	1	5	2	10	2	4
Swansea Town	8	0	6	2	6	22	2

# Edward Martell

## & Co., Ltd.

TELEPHONE

896-7

Coal and Coke Merchants

ESTABLISHED

1879

24, UPPER GEORGE STREET, LUTON

## Burn "Hucknall" Ashless Coal

### It Scores Every Time!!

Popular Price! Saves Labour!! Great Heat!!!

WHY NOT TRY IT?

## WELL DONE

## LUTON TOWN!

you deserve  
a packet of

## SWEET

## ROSEMARY

TOBACCO

from

## W. & F. FAULKNER

## LONDON

BRANCH OF THE IMPERIAL TOBACCO CO.  
(OF GREAT BRITAIN AND IRELAND), LIMITED

For  
PRINTING  
THAT  
SATISFIES

both for  
Price and Quality



E. A. ALLEN  
424, Dunstable Road, Luton

TELEPHONE 1626



# CONGRATULATIONS

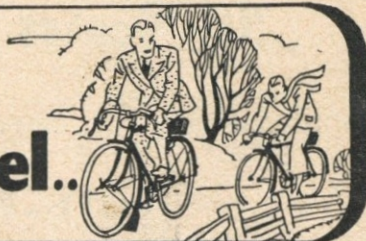
Partridges take this opportunity at the commencement of the season to congratulate the Town Club on its magnificent achievement in obtaining promotion. It was certainly a long time to wait before they became Champions of the 3rd Division—but—there's no need to wait at all for the best Sports Goods and Value ——— if you consult Partridges immediately ———

All Winter  
Sports Requisites  
Stocked.  
Special Terms to  
Clubs

FOOTBALLS  
JERSEYS  
KNICKERS  
SHINGUARDS  
HOSE - BOOTS  
GOAL NETS  
KIT BAGS ETC.

Every Article  
Guaranteed and will  
be replaced if proved  
defective.  
Your Satisfaction  
assured.

**Did he pass  
you on the level..**



**did he leave  
you on the hills?**

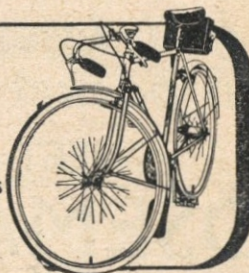
*-he's riding the easy running*

**RALEIGH**  
THE ALL-STEEL BICYCLE

Models  
from  
5 Gns.

Easy Terms  
Arranged

Ask for  
Catalogue



**A. G. Partridge & Co**

PHONE 234

10-12 CHAPEL ST.  
LUTON

LUTON'S  
LEADING  
SPORTS  
DEALERS

LUTON'S  
LEADING  
CYCLE  
DEALERS