



# LUTON TOWN FOOTBALL ·AND· ATHLETIC CO. LTD.

OFFICIAL  
JOURNAL

PRICE 2d



League—Division II

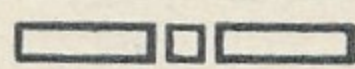
September 4th, 1937.

LUTON TOWN v. MANCHESTER UNITED

“TRUE-FORM”  
THE FINEST FOOTWEAR  
IN THE TOWN



BUY DIRECT FROM THE MAKERS



LOCAL BRANCH:

44, GEORGE STREET

Head Office and Factories: NORTHAMPTON



*Insist upon the  
Building Materials for  
your new house coming from*

# POWDRILL'S

BUILDERS' MERCHANTS  
COAL and COKE MERCHANTS  
BRICK MANUFACTURERS  
SAND & GRAVEL QUARRY OWNERS

GEORGE POWDRILL & SON LTD., 1, 3 & 5, HITCHIN ROAD, LUTON

TELEPHONE 2073 (2 Lines)

## WHAT a TEAM!!!

## WHAT a CROWD!!

## WHAT a WELCOME!

*awaits you at*

CHAPEL STREET METHODIST CHURCH  
TOMORROW

*at 10.45 a.m. and 6 p.m.,*

## Rev. Percy C. MELLOR

*The Newly Appointed Minister*

# Luton Football and



# Town Athletic Co.,

Telephone No. 3151-2.

LIMITED

*President:* Alderman Harry Arnold, C.A., J.P.

*Directors:*

*Chairman:* Alderman Chas. Jeyes, C.C.

Messrs E. Hugh Woods, (*Vice-Chairman*) Frank J. Andrews, Stanley H. Godfrey, C.A.,  
Horace S. Hewson, Percival G. Mitchell, Henry Richardson, C.C., Philip W. Wright.

*Team Manager:* Mr. E. Liddell.

*Secretary:* Mr. A. E. Wickson.

*Honorary Medical Officer:* E. J. Crarer, M.B., Ch.B.

*Honorary Solicitors:* Messrs Machin & Co., 17-19, George Street West, Luton.

A HEARTY welcome this afternoon to Manchester United, another Club which has a wonderful traditional record. May your visit to "Hatopolis" be recorded in your annals as an extremely happy one, and one also that will be looked back upon as a fine sporting contest, fought out in the best traditions of English football with the laurels awarded to the team that most deserved them. We hope also that as our guests this afternoon you will accept from us our hospitality, and that new friendships will be made.

The exact date of the formation of the Manchester United Club cannot definitely be stated but it is over fifty years ago when as Newton Heath they were beaten in the final of the Manchester Senior Cup. The Club was originated by a body of working men employed by the Lancashire and Yorkshire Railway and the first ground was secured on a space adjoining the North Road. For some years the Club was hampered in making suitable fixtures, but eventually a combination of clubs known as the Alliance came into existence, and this body eventually became in season 1892-3 the Second Division of the Football League. Later the ground was moved to Bank Lane, Clayton, and on a memorable occasion they attempted to play a match there by artificial light. Unfortunately this was not a success.

The first match at Old Trafford was played against Liverpool in 1911, on a ground that had cost some £60,000 to establish and which still remains one of the best in the country. The United have had a chequered career in connection with the League, and after several years without achieving distinction they won the League championship in 1908, a performance they repeated in 1911. Their lowest record was in 1894 when they secured only fourteen points.

It may not be generally known that the United players were largely responsible for the formation of the Players Union, the organisation which has done so much to improve the status of professionals.

During its long history Newton Heath and now Manchester United have won every possible honour in the Football World. In 1888 the team won the Manchester Senior Cup, a success which has been

repeated on many occasions since. They won the F.A. Cup in 1909, and they also held the Football League Shield, which was won at Stamford Bridge with a record score of eight goals against Swindon Town. The ground capacity is 73,000, which total is also the record attendance figure.

One of the interesting events in the history of the Club is that they have invariably unearthed goalkeepers above the ordinary, and such names as Tom Hay, Slater and Jimmy Warner readily come to memory. Famous players who have been associated with the Club include Alec Bell, Billy Meredith, H. Burgess, R. Duckworth, Sandy Turnbull, G. Wall, H. Halse, J. Silcock, Neil McBain, Frank Barson, Ernest Hine, James Hacking and T. Jones.

The United are making strenuous efforts to regain their lost First Division status and on the opening match of the season defeated Newcastle United by three clear goals at Old Trafford. During the week however they succumbed at Coventry, where the "Bantams" were successful by the only goal of the match.

## LONDON MID-WEEK LEAGUE

### Fixtures Season 1937-8

Thur., Oct. 28	Peterborough United	...	...	A
Wed., Nov. 3	Guildford City	...	...	A
Mon., " 15	West Ham United	...	...	A
Wed., " 24	Crystal Palace	...	...	H
Thurs., Jan. 13	Fulham	...	...	A
Wed., Feb. 2	Folkestone	...	...	H
Wed., " 9	Folkestone	...	...	A
Wed., " 16	Southend United	...	...	H
Wed., " 23	Guildford City	...	...	H
Wed., Mar. 2	Fulham	...	...	H
Wed., " 9	Crystal Palace	...	...	A
Wed., " 23	Peterborough United	...	...	H
Wed., Apr. 20	West Ham United	...	...	H
Wed., " 27	Southend United	...	...	A

### OTHER MATCHES ARRANGED

Wed., Oct. 27	Bedfordshire v. Hertfordshire
Wed., Nov. 17	Bedfordshire v. Berks & Bucks
Good Friday, 1938.	Luton Town "A" v. Luton District & South Beds Football League







If your thoughts are centred on house purchase you cannot do better than to pass us your requirements. You will find we have just the house you are looking for, and will be pleased with the courteous and efficient manner in which your business is attended to

## SELL & MITCHELL

Auctioneers, Land & Estate Agents, Surveyors & Valuers

7-9, PRINCESS STREET  
LUTON

TELEPHONES 2003-4

Also 95, HIGH STREET NORTH  
DUNSTABLE

Telephone 354

District Agents for Woolwich Equitable Building Society

ESTABLISHED 1879

TO  
LET

### To-Day's Half-Time Scores

#### FIRST LIST

A	Barnsley v. Stockport County	.....
B	Blackburn R. v. Norwich City	.....
C	Bury v. Plymouth Argyle	.....
D	Coventry City v. Burnley	.....
E	Fulham v. Chesterfield	.....
F	Newcastle U. v. Sheffield U.	.....
G	Notts Forest v. Tottenham H.	.....
H	Sheffield Wed. v. Swansea T.	.....
K	Southampton v. Aston Villa	.....
L	West Ham U. v. Bradford	.....
M	Southport v. Doncaster Rovers	.....
N	Tranmere Rovers v. Chester	.....

NOTE—The Letter in the Programme corresponds with the letter on the Board—thus A 0-1 means that the first-named Club has scored 0 and their opponents 1.



#### SPECIALITIES

Paint and Enamel  
Manufacturers

"Stuart" Series  
Wallpapers

OGDEN &  
CLEAVER

Stuart Street, LUTON

TELEPHONE 580

# Alma G. Peck

BUILDER ——— CONTRACTOR ——— DECORATOR

5 and 7, WENLOCK STREET

LUTON

PHONES 1752 - 3095



## Clothes for Men with a Taste for Style!

The more critical you are, the more you will be satisfied with your purchases from Blundells. Up-to-date styles... dependable qualities... supreme values, await you here. Every item of wear, from socks to hat, at the keenest of prices.

**BLUNDELL Bros.** (LUTON) LTD.  
MEN'S DEPT. 12, CHEAPSIDE, LUTON.

### 'WHITE'S'

have again  
supplied  
Luton Town  
Football Club  
with their Boots

They know  
the Best

H. WHITE (Luton) LTD.,  
Footwear Specialists,  
MANCHESTER STREET

### To-Day's Half-Time Scores

#### SECOND LIST

A	Arsenal v. Wolverhampton W.	.....
B	Birmingham v. Portsmouth	.....
C	Blackpool v. Everton	.....
D	Brentford v. Huddersfield T.	.....
E	Derby County v. Sunderland	.....
F	Grimsby Town v. Bolton Wan.	.....
G	Leeds U. v. Preston North E.	.....
H	Liverpool v. Charlton Athletic	.....
K	Manchester C. v. Leicester C.	.....
L	Middlesbrough v. Stoke City	.....
M	West Bromwich v. Chelsea	.....
N	Carlisle U. v. Lincoln City	.....

● When passing  
through

**HARPENDEN**

pay a visit to

"The  
**MARQUIS of  
GRANBY**"

PROPRIETOR - TOM HODGSON  
(Ex-Capt., Luton Town F.C.)

FULLY LICENSED

TEA GARDENS

## Don't Miss a Match this Season

through working extra time. You can get the REQUIRED OUTPUT in LESS time if you equip your factory with —

## "FARRBEST" HAT MACHINERY

GEO. F. FARR, The "Farrbest" Hatter's Engineer  
COLLINGDON STREET, LUTON

ESTABLISHED 1909

Telephone:  
Luton 2055 (2 lines)

Telegrams:  
"Farrbest," Luton



# MARES

for  
**Caps**

Charles **MARES** Limited

George Street & Dunstable Road  
LUTON And at St. Albans

TODAY

## PALACE THEATRE LUTON

TODAY

JACK HULBERT      CICELY COURTNEIDGE  
— IN —

**"TAKE MY TIP"** (U)

NEXT WEEK

Madeleine Carroll and  
Freddie Bartholomew in

NEXT WEEK

**"Lloyds of London"** (U)

**Football here  
again**

SO NOW IS THE TIME  
TO BUY YOUR WINTER  
SPORTS REQUISITES  
FOOTBALL, RUGBY  
HOCKEY and DARTS  
GOODS a Speciality

The Jerseys, Knicks, Hose and  
Manfield Boots worn by  
the Players of Luton Town  
F.C. were supplied by us  
Agents for "T" Footballs  
and Manfield Hotspur  
Football Boots

SEE WINDOWS

**G. A. WILD  
AND SONS**

Sports Outfitters  
LUTON and DUNSTABLE

BOOK AT  
**BAILEY'S**

FOR  
LONDON COASTAL COACHES  
ALL INDEPENDENT SERVICES

JERSEY AIRWAYS  
LONDON THEATRES  
AND  
AMUSEMENTS

Daily Services to all  
parts of Great Britain

TOBACCONIST  
AND BOOKING AGENT

38, NEW BEDFORD ROAD  
LUTON

Phone 1972

LUTON TOWN (White Shirts  
Black Knickers)

2 King Right Back  
4 Finlayson Right Half  
7 Hancock Outside Right  
8 Dawes Inside Right  
Referee: W. P. HARPER (Stourbridge)  
12 Manley Outside Left  
13 Baird Inside Left  
17 McKay Left Half  
20 Roughton Left Back

MANCHESTER U. (Red Shirts  
White Knickers)

Our Brew owes its outstanding  
successes to no fancy claims

**J.W. GREEN'S**  
IS  
**JUST GOOD BEER**  
AND  
**beer is best**

Obtainable of all Tenants and Agents, and  
J. W. GREEN LIMITED, The Brewery, LUTON

Telephone - Luton 3131

League—Division II

3 Smith Left Back  
6 Fellowes Left Half  
10 Roberts Inside Left  
11 Stephenson Outside Left  
Linesmen Red Stripe Flag: C. H. Flaxman (Addiscombe)  
Blue Stripe Flag: R. S. Playford (Ilford)  
15 Murray Inside Right  
16 Bryant Outside Right  
19 Gladwin Right Half  
21 Griffiths Right Back

Kick-Off 3.15 p.m.

**L-M-S  
RAILWAY**

EXCURSION to  
**BIRMINGHAM**

Monday, September 6th, 1937

Luton - - - dep. 2.5 p.m.

Witton - - - - - arr. 5.38 p.m.

Nearest station to football ground

Birmingham New Street arr. 5.52 p.m.

Return Train—

Birmingham New Street dep. 9.15 p.m.

Witton - - - - - dep. 9.25 p.m.

FARE 5/-

**WE'RE THERE!**

**BIRD'S**

for

BUILDING  
AND DECORATIVE  
MATERIALS

CHARLES BIRD & SONS, Limited  
Collingdon Street, LUTON

Telephone 1255

— Also —

Corrugated Iron, Wire Netting,  
Chain Link Fencing, Chestnut  
Paling, Creosote and Garden  
Sundries

**HARRY CANHAM**

Cardboard Box

Packing Case, Ply Box and

Crate Manufacturer

9a, MARKET HILL, LUTON

TELEPHONE 458

For a GOOD DINNER  
TEA or SUPPER

try

**J. BEDDALL**

PARTIES CATERED FOR  
SATISFACTION ASSURED

67, LEAGRAVE ROAD  
LUTON

A few minutes walk from the  
Football Ground

**WINES AND SPIRITS**

**R. H. Marks Ltd.**

69, George Street  
and at 81, High Town Road

Luton

AGENTS FOR

MANN, CROSSMAN & PAULIN LTD.  
BEERS and STOUTS

**"THROW-IN"**

your lot with us and

**BUY YOUR OWN HOUSE**

We also offer

**A GOOD INVESTMENT**

Write for our attractive terms:

**LUTON & MIDLANDS  
BUILDING SOCIETY**

Telephone: Luton 1067

11, George St.  
West  
LUTON

**WEBDALE'S**

of WELLINGTON STREET

FOR

Kitchen Equipment

AND ALL

Household Requirements

AT LOWEST PRICES

21 to 27 WELLINGTON STREET  
Phone: Luton 41



**Charnley**  
and Sons  
REGISTERED  
OPTICIANS

National Health  
Insurance

On the Official List of  
H.S.A. Opticians

11, Wellington Street  
LUTON

Telephone 1808

**TO LET**

**E. A. GREEN**

BOOKSELLER  
NEWSAGENT  
STATIONER

Luton's Most  
Progressive Circulating  
Library

21a, New Bedford Road  
and 228, Biscot Road  
LUTON

Telephone 476

**F. WHITE**

Builder  
and  
Contractor

141,  
Stockingstone Road  
LUTON



All Classes of  
Repairs, Painting and  
Decorating Under-  
taken

ESTIMATES FREE

**To-Day's Half-Time Scores**

**THIRD LIST**

A	Aldershot v. Notts County	.....
B	Bournemouth v. Queens P. R.	.....
C	Brighton & H. v. Reading	.....
D	Bristol Rovers v. Mansfield T.	.....
E	Cardiff City v. Southend U.	.....
F	Exeter City v. Bristol City	.....
G	Gillingham v. Watford	.....
H	Millwall Ath. v. Crystal Palace	.....
K	Northampton v. Torquay U.	.....
L	Swindon Town v. Newport Co.	.....
M	Walsall v. Clapton Orient	.....
N	Bradford City v. Rochdale	.....

**W. CHAMBERLAIN & Co.**

Proprietors—  
A. M. Chamberlain  
R. Deadman

106, Dunstable Road  
LUTON

Best British Made  
Brushes and Brooms  
Enamel Ware

City of London  
White Lead Paint

Messrs Merrediths & Co.  
Merlac Enamel Paints

Fadeless Wall Paper  
Ask for Pattern Books

A TRIAL SOLICITED

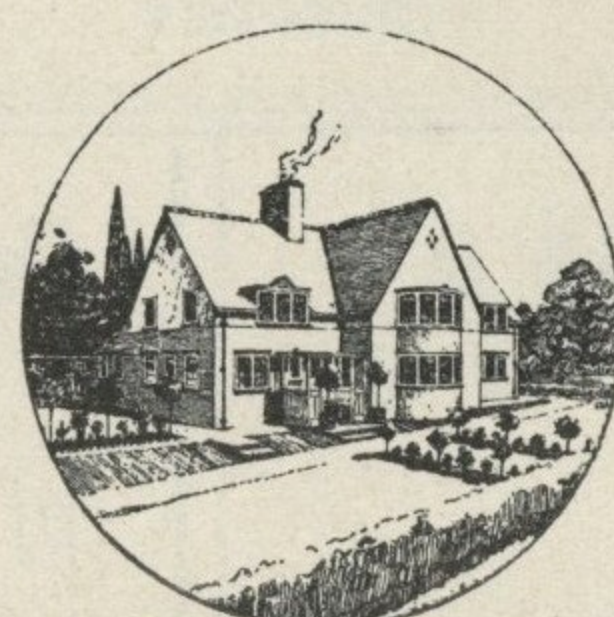
**W. HOLES**

3, Gordon Street, Luton  
Coal and  
Coke Merchant

Authorised Agent for  
Luton Gas Company's  
large and graded coke

Agent for  
L.M.S. Passenger Dept.

Telephone 210



Telephone: Luton 2126.

**P. W. SMITH,**

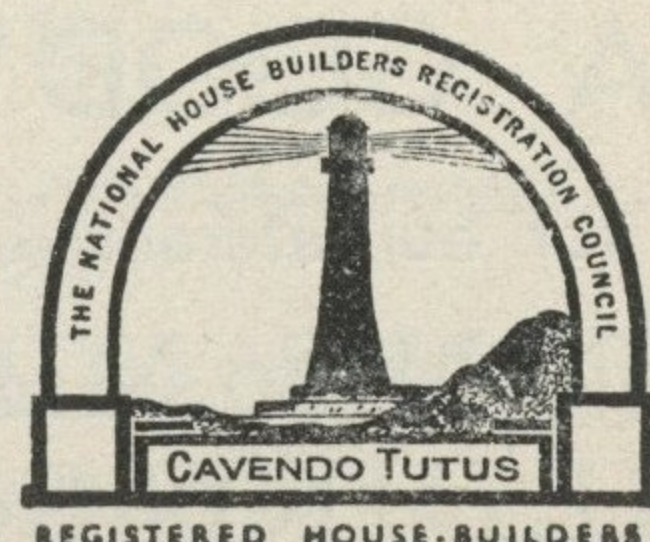
**BUILDER**

**HIGH CLASS DECORATOR**

**CONTRACTOR**

418, Dunstable Road,

Luton.



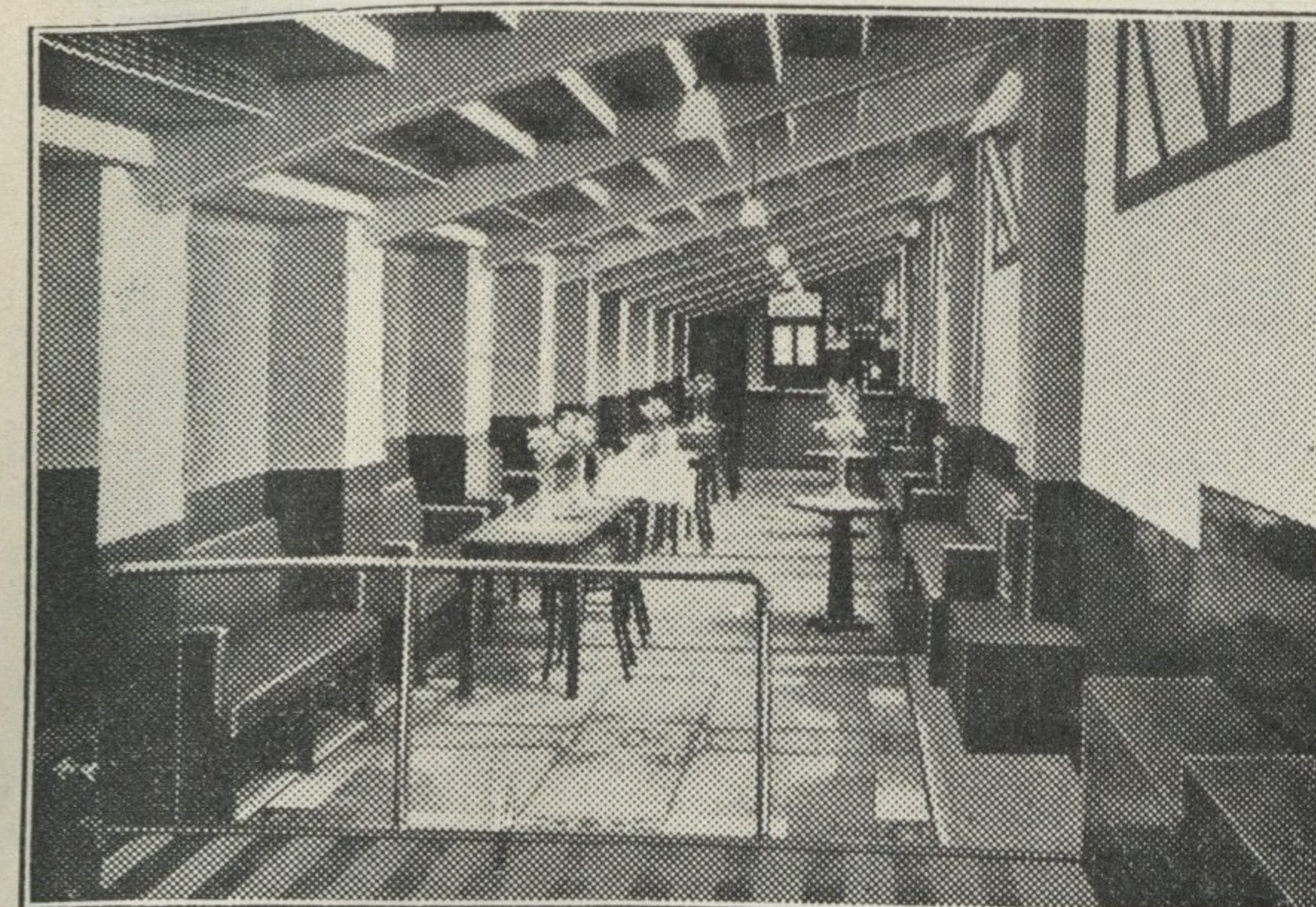
**BOBBERS STAND CLUB**

President: P. W. Wright, Esq.

Hon. Secretary-Treasurer: J. Collier.

Committee: Messrs F. Cooper, F. Dean,  
A. Flitton, E. Gibbs, J. Meades, S. Setchell.

'Phone 2566.



The Bobbers Committee desire to take this opportunity of wishing the Boys every success in the coming season. At the same time may we remind the supporters, whether Bobbers or not, that some responsibility for the success of the team rests on ourselves and we hope all will do their part. We feel that the good results obtained last season were due in no small part to two factors, the magnificent way in which the supporters rallied round the Club and the splendid team spirit amongst the players.

Now a word in regard to the Bobbers Stand Club and its activities. We want to be of service both to you and the Club and we can only do this if you will help and support us. First of all we want everyone to join our Club. The Membership Fee is only 1/2 per annum. Membership Forms are issued to all the Tea Bars on the Ground and can also be obtained in the Club Room. Membership entitles you to take part in the Winter Tournaments

that the Games Committee intend to run amongst the Members. The Refreshment Bars round the Ground have all been built by us and these, we are sure, will be well patronised. By so doing you will not only assist us to give you something for your cash, but at the same time will aid the Directors of the Football Club in regard to finance. All the catering on the Ground is now under the management of the Bobbers Stand Club. Last, but not least, it is our intention to organise excursions for away matches at cheap rates. This with the co-operation of the Railway Company. To do this, however, it must be realised that we shall have to have early applications. Last Saturday we took a train load to Stockport, and those that went have asked for another run to be booked up, so do not fail to purchase a Programme to find out in these notes all full particulars. Failing this look in at the Club Room on match days.

Now an appeal to the lady supporters. We were very pleased to see so many ladies travel by the train to Stockport. We have over 400 lady members in our club, but we want more, so now is a chance for you to become a Bobber. Membership saves you a lot of trouble when you wish to go away to watch your favourites play. We send small parties as well as long corridor trains, so just make up your minds and join at once.

*Luton's Oldest and Largest  
Restaurant*

SEATING ACCOMMODATION FOR 300

ESTABLISHED 65 YEARS

*Private Parties Catered For*

**CENTRAL  
RESTAURANT**

20 - 22 - 24, CHEAPSIDE

PHONE 172

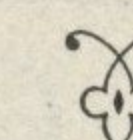
Proprietor: S. G. Primett

**A. E.  
NICHOLLS**

*Wholesale*

**CONFECTIONER & TOBACCONIST**

CAN SUPPLY YOU WITH  
EVERYTHING YOU WANT  
FOR THE TOBACCO AND  
CONFECTIONERY TRADE  
AT LOWEST PRICES



*Prompt Delivery and Civility*

**16, MILL STREET, LUTON**

'Phone: Luton 902







## FIXTURES 1937-8

## FIRST XI Division II

		F. A.	
Sat., Aug. 28	Stockport County	A 1 2	
Wed., Sept. 1	Aston Villa	H 3 2	
Sat., " 4	Manchester United	H	
Mon., " 6	Aston Villa	A	
Sat., " 11	Sheffield United	A	
Wed., " 15	Newcastle United	A	
Sat., " 18	Tottenham Hotspur	H	
Sat., " 25	Burnley	A	
Sat., Oct. 2	Bury	H	
Sat., " 9	Coventry City	A	
Sat., " 16	Bradford	A	
Sat., " 23	West Ham United	H	
Sat., " 30	Southampton	A	
Sat., Nov. 6	Blackburn Rovers	H	
Sat., " 13	Sheffield Wednesday	H	
Sat., " 20	Chesterfield	A	
Sat., " 27	Plymouth Argyle	A	
Sat., Dec. 4	Fulham	H	
Sat., " 11	Swansea Town	A	
Sat., " 18	Norwich City	H	
Sat., " 25	Barnsley	A	
Mon., " 27	Barnsley	A	
Sat., Jan. 1	Stockport County	H	
Sat., " 8	Manchester United	A	
Sat., " 15	Manchester United	H	
Sat., " 22	Sheffield United	A	
Sat., " 29	Tottenham Hotspur	A	
Sat., Feb. 5	Burnley	H	
Sat., " 12	Bury	A	
Sat., " 19	Coventry City	H	
Sat., " 26	Bradford	H	
Sat., Mar. 5	West Ham United	A	
Sat., " 12	Southampton	H	
Sat., " 19	Blackburn Rovers	A	
Sat., " 26	Sheffield Wednesday	H	
Sat., April 2	Chesterfield	A	
Sat., " 9	Plymouth Argyle	H	
Fri., " 15	Nottingham Forest	A	
Sat., " 16	Fulham	A	
Mon., " 18	Nottingham Forest	H	
Sat., " 23	Swansea Town	A	
Sat., " 30	Norwich City	A	
Sat., May 7	Newcastle United	H	

## RESERVE FIXTURES London Combination F. A.

Sat., Aug. 28	Southend United	5 1 H 3 1
Thur. Sept. 2	Clapton Orient	0 1 A 7 0
Sat., " 4	Portsmouth	0 3 A
Wed., " 8	Clapton Orient	0 1 H
Sat., " 11	Chelsea	3 2 H
Wed., " 15	Bournemouth	1 3 A
Sat., " 18	Tottenham Hotspur	1 5 A
Wed., " 22	Leicester City	1 2 H
Sat., " 25	Queens Park Rangers	4 0 H
Mon., " 27	Leicester City	1 2 A
Sat., Oct. 2	Charlton Athletic	0 3 A
Sat., " 9	Brighton & Hove A.	1 2 H
Wed., " 13	Bristol City	1 1 A
Sat., " 16	Swansea Town	2 0 H
Sat., " 23	Crystal Palace	1 2 A
Sat., " 30	Reading	6 2 H
Sat., Nov. 6	Fulham	1 1 A
Sat., " 13	Millwall	5 3 H
Sat., " 20	Brentford	0 3 A
Sat., " 27	Arsenal	1 1 H
Sat., Dec. 4	Southampton	0 5 A
Sat., " 11	West Ham	1 2 H
Sat., " 18	Watford	3 3 A
Sat., " 25	Coventry City	1 2 A
Mon., " 27	Coventry City	0 5 H
Sat., Jan. 1	Southend United	1 1 A
Sat., " 8	Northampton Town	3 4 H
Sat., " 15	Portsmouth	1 1 H
Sat., " 22	Chelsea	1 2 A
Sat., " 29	Tottenham Hotspur	3 2 H
Sat., Feb. 5	Queens Park Rangers	1 2 A
Sat., " 12	Charlton Athletic	1 1 H
Sat., " 19	Brighton & Hove A.	3 2 A
Sat., " 26	Swansea Town	1 0 A
Sat., Mar. 5	Crystal Palace	2 5 H
Sat., " 12	Reading	1 1 A
Sat., " 19	Fulham	4 0 H
Sat., " 26	Millwall	2 9 A
Sat., April 2	Brentford	4 2 H
Sat., " 9	Arsenal	0 10 A
Fri., " 15	Northampton Town	1 4 A
Sat., " 16	Southampton	3 1 H
Sat., " 19	Bristol City	1 1 H
Sat., " 23	West Ham	5 1 H
Sat., " 30	Watford	5 1 H
Wed., May 4	Bournemouth	2 1 H

## LEAGUE TABLES

## LEAGUE DIVISION II

	Pld.	Won	Lost	Drn.	For	Agst.	P.
Chesterfield	2	2	0	0	2	0	4
Stockport County	2	2	0	0	4	2	4
Tottenham Hotspur	2	1	0	1	4	0	3
Coventry City	2	1	0	0	1	0	3
Bradford	2	1	0	1	5	4	3
Norwich City	2	1	0	1	5	4	3
Manchester United	2	1	1	0	3	1	2
Plymouth Argyle	2	1	1	0	5	2	2
Aston Villa	2	1	1	0	4	3	2
Sheffield United	2	1	1	0	2	2	2
Sheffield Wednesday	2	1	1	0	2	2	2
Barnsley	2	1	1	0	4	4	2
Blackburn Rovers	2	1	1	0	4	4	2
LUTON TOWN	2	1	1	0	4	4	2
Swansea Town	2	1	1	0	4	4	2
West Ham United	2	1	1	0	1	2	2
Bury	2	1	1	0	2	4	2
Burnley	2	1	1	0	2	4	2
Southampton	2	0	2	0	3	5	0
Notts Forest	2	0	2	0	2	4	0
Fulham	2	0	2	0	1	6	0
Newcastle United	2	0	2	0	0	4	0

## LONDON COMBINATION

	Pld.	Won	Lost	Drn.	For	Agst.	P.
Fulham	2	2	0	0	2	0	4
LUTON TOWN	2	2	0	0	10	1	4
Bristol City	2	2	0	0	7	1	4
Portsmouth	2	2	0	0	6	1	4
West Ham United	2	2	0	0	6	1	4
Crystal Palace	2	2	0	0	4	1	4
Millwall	2	2	0	0	3	1	4
Chelsea	1	1	0	0	2	0	2
Arsenal	2	1	1	0	6	1	2
Coventry City	2	1	1	0	6	4	2
Tottenham Hotspur	2	0	0	2	1	1	2
Northampton	2	1	1	0	1	2	2
Queens Park Rangers	1	0	0	1	0	0	1
Brighton & Hove A.	1	0	0	1	2	2	1
Southend United	2	0	1	1	3	5	1
Bournemouth	2	0	1	1	2	5	1
Watford	2	0	2	0	4	11	0
Charlton Athletic	2	0	2	0	1	3	0
Reading	2	0	2	0	1	3	0
Leicester City	2	0	2	0	1	7	0
Brentford	1	0	1	0	0	1	0
Southampton	2	0	2	0	0	4	0
Swansea Town	1	0	1	0	0	6	0
Clapton O.	1	0	1	0	0	7	0

Edward Martell  
& Co., Ltd.TELEPHONE  
896-7

Coal and Coke Merchants

ESTABLISHED  
1879

24, UPPER GEORGE STREET, LUTON

Burn "Hucknall" Ashless Coal  
It Scores Every Time!!

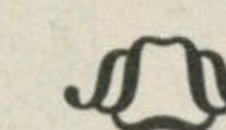
Popular Price! Saves Labour!! Great Heat!!!

WHY NOT TRY IT?

WELL DONE  
LUTON TOWN!you deserve  
a packet of  
SWEET  
ROSEMARY

TOBACCO

from

W. & F. FAULKNER  
LONDONBRANCH OF THE IMPERIAL TOBACCO CO.  
(OF GREAT BRITAIN AND IRELAND), LIMITEDFor  
PRINTING  
THAT  
SATISFIESboth for  
Price and QualityE. A. ALLEN  
424, Dunstable Road, Luton

TELEPHONE 1626



# CONGRATULATIONS

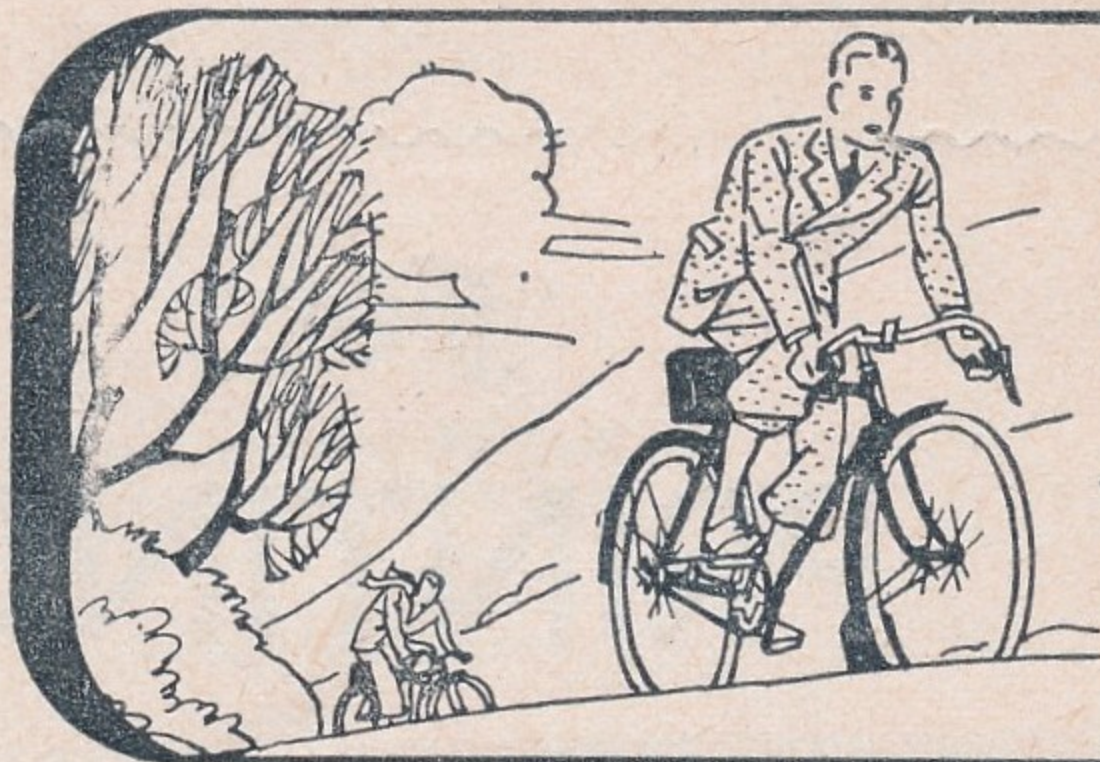
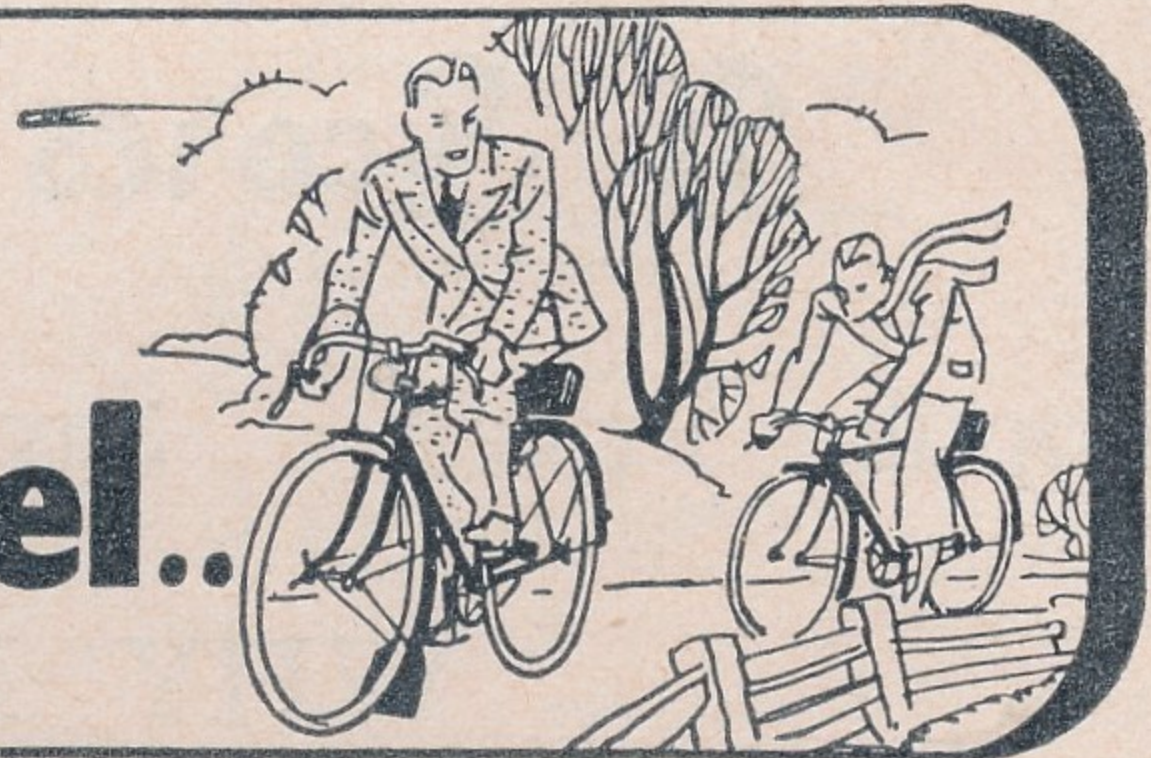
Partridges take this opportunity at the commencement of the season to congratulate the Town Club on its magnificent achievement in obtaining promotion. It was certainly a long time to wait before they became Champions of the 3rd Division—but—there's no need to wait at all for the best Sports Goods and Value ——— if you consult Partridges immediately ———

All Winter  
Sports Requisites  
Stocked.  
Special Terms to  
Clubs

FOOTBALLS  
JERSEYS  
KNICKERS  
SHINGUARDS  
HOSE-BOOTS  
GOAL NETS  
KIT BAGS ETC.

Every Article  
Guaranteed and will  
be replaced if proved  
defective.  
Your Satisfaction  
assured.

**Did he pass  
you on the level..**



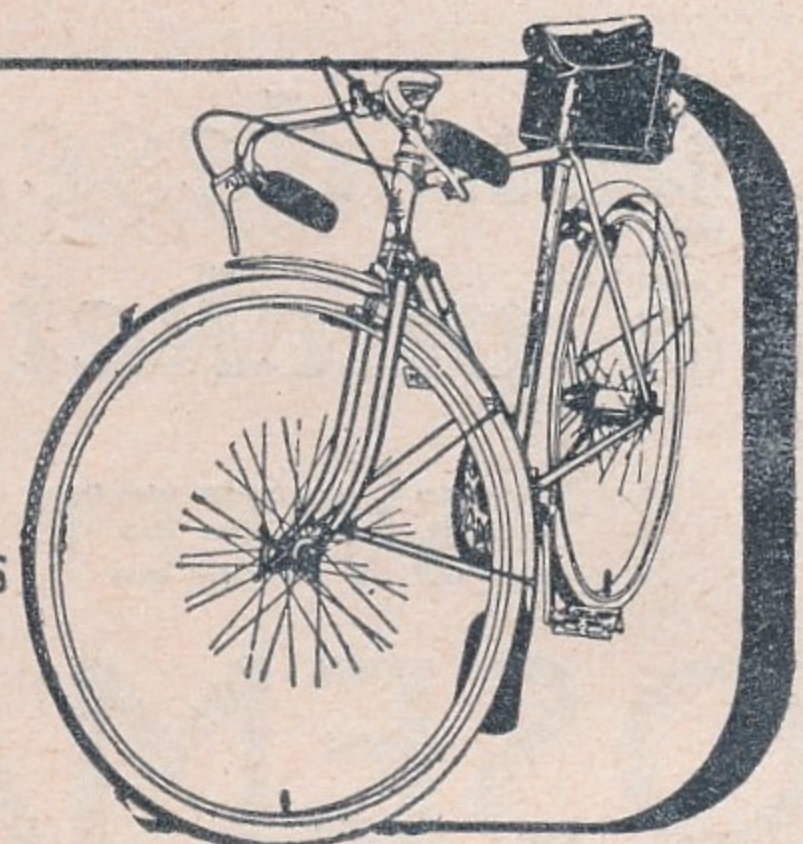
**did he leave  
you on the hills?**

*-he's riding the easy running*

**RALEIGH**  
THE ALL-STEEL BICYCLE

Models  
from  
5 Gns.  
Easy Terms  
Arranged

Ask for  
Catalogue



**A. G. Partridge & Co**  
PHONE 234 10-12 CHAPEL ST. LUTON

LUTON'S  
LEADING  
SPORTS  
DEALERS

LUTON'S  
LEADING  
CYCLE  
DEALERS