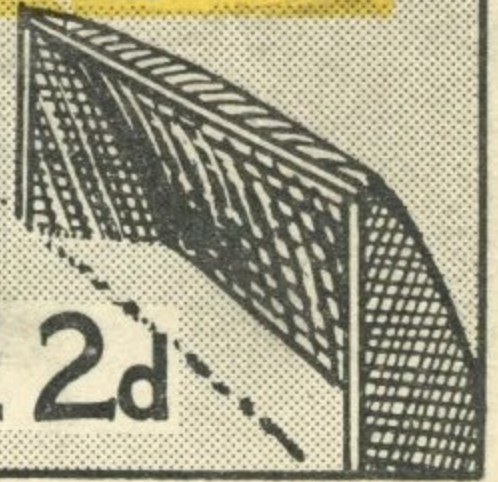




# LUTON TOWN FOOTBALL AND ATHLETIC CO. LTD.

OFFICIAL  
JOURNAL

PRICE 2d



League—Division II

September 1st, 1937.

LUTON TOWN v. ASTON VILLA

## “TRUE-FORM”

THE FINEST FOOTWEAR  
IN THE TOWN



BUY DIRECT FROM THE MAKERS

LOCAL BRANCH:

44, GEORGE STREET

Head Office and Factories: NORTHAMPTON

Insist upon the  
Building Materials for  
your new house coming from

## POWDRILL'S

BUILDERS' MERCHANTS  
COAL and COKE MERCHANTS  
BRICK MANUFACTURERS  
SAND & GRAVEL QUARRY OWNERS

GEORGE POWDRILL & SON LTD., 1, 3 & 5, HITCHIN ROAD, LUTON  
TELEPHONE 2073 (2 Lines)

C H = = C H

means nothing

unless

U R

in it

WATCH THIS SPACE EACH WEEK

## Luton Town Football and Athletic Co.,



LIMITED

Telephone No. 3151-2.

President: Alderman Harry Arnold, C.A., J.P.

Directors:

Chairman: Alderman Chas. Jeyes, C.C.

Messrs E. Hugh Woods, (Vice-Chairman) Frank J. Andrews, Stanley H. Godfrey, C.A.,  
Horace S. Hewson, Percival G. Mitchell, Henry Richardson, C.C., Philip W. Wright.

Team Manager: Mr. E. Liddell.

Secretary: Mr. A. E. Wickson.

Honorary Medical Officer: E. J. Crarer, M.B., Ch.B.

Honorary Solicitors: Messrs Machin & Co., 17-19, George Street West, Luton.

TONIGHT we stage our initial home come back to Division II of the Football League after an interval of thirty-seven years, and what club could we desire more to assist us in this house warming than that famous club of traditions, Aston Villa. Therefore to the Directors, Officials, Players and Supporters of Aston Villa present this evening we accord you a hearty welcome to our ground, and when you arrive back in Birmingham we trust you will carry away with you nothing but pleasant memories of the hospitality extended to you by Luton Town.

The cradle of the famous Villa club, doubtless the outstanding professional organisation of the world, was a Wesleyan Chapel on the Aston side of Birmingham. Away back in the early seventies some of the young men and boys connected with the chapel kicked a football; then they formed a club—Aston Villa. It was a bold step, because the Birmingham Cricket and Football Club, which played on the Lower Aston Grounds, had most of the support the good people of the great Midland City were prepared to give to Soccer, but although the youthful Wesleyans had very little in the way of friends and very little knowledge of the game they played, they stuck to their guns, and in due course received a certain amount of support.

Then George Ramsay, for so many years the guide, philosopher and friend of football in 'Middle England,' came along. He brought Glasgow football to Birmingham and he made the Villa. A playing pitch at Perry Barr was secured at a yearly rental of five pounds and the first 'gate' amounted to five shillings and threepence. Trouble, however, arose at Perry Barr owing to the landlord's knack of asking for—and obtaining—a higher rent as the financial position of the Club improved. Eventually a move was made to the Lower Aston Grounds, the

'pitch' being officially opened during Easter Week, 1897. Now the Lower Aston Ground is Villa Park, the most famous football ground in England.

In the sixty years that have come and gone since the youthful Wesleyans kicked a ball in 1874 the 'Villans' of Villa Park have done great things in football and for football. In 1887 they met their neighbours, West Bromwich Albion, in the Final of the Football Association Cup and won by two clear goals after beating Glasgow Rangers in the Semi-Final. This final tie, played at the Oval, drew a record crowd of well over 20,000! Since 1887 the Cup has found a resting place at Villa Park five times—1895, 1897, 1905, 1913 and 1920.

The Villa was one of the original members of the Football League and were runners-up to Preston North End in its first season. The championship came to them in the season of 1893-4. Altogether the 'Villans' have 'topped' Division I six times and have been runners-up on seven other occasions. Their greatest 'failure' came the season before last, when for the first time in their history they had to play in League II football, but many will contend that this 'failure' did more good to soccer than perhaps anything previously or since. That the 'Villans' are all out to regain their lost prestige is only too well known and should they ultimately succeed at the end of the present season no one in Luton will not say them nay.

A list of famous players who have worn the famous claret and light blue shirts would doubtless fill a book but a few can be mentioned, Archie and Andy Hunter, A. Brown, H. Vaughton, Dennis Hodgetts, T. Robertson, John Davey, Howard Spencer, J. Cowan, H. Hampton, T. Waring, W. H. Walker, Frank Barson and W. E. Thoughton.



If your thoughts are centred on house purchase you cannot do better than to pass us your requirements. You will find we have just the house you are looking for, and will be pleased with the courteous and efficient manner in which your business is attended to

## SELL & MITCHELL

Auctioneers, Land & Estate Agents, Surveyors & Valuers

7-9, PRINCESS STREET  
LUTON

Also 95, HIGH STREET NORTH  
DUNSTABLE

TELEPHONES 2003-4

Telephone 354

District Agents for Woolwich Equitable Building Society

ESTABLISHED 1879



## Clothes for Men with a Taste for Style!

The more critical you are, the more you will be satisfied with your purchases from Blundells. Up-to-date styles... dependable qualities... supreme values, await you here. Every item of wear, from socks to hat, at the keenest of prices.

**BLUNDELL Bros.** (LUTON) LTD.  
MEN'S DEPT. 12, CHEAPSIDE, LUTON.

**'WHITE'S'**  
have again  
supplied  
Luton Town  
Football Club  
with their Boots

*They know  
the Best*  
H. WHITE (Luton) LTD.,  
Footwear Specialists,  
MANCHESTER STREET

### To-Day's Half-Time Scores SECOND LIST

A	Brighton & H. v. Southend U.	.....
B	Exeter City v. Notts County	.....
C	Gillingham v. Newport County	.....
D	Swindon T. v. Crystal Palace	.....
E	Watford v. Bristol City	.....
F	Bradford City v. Southport	.....
G	Crewe A. v. New Brighton	.....
H	Darlington v. Oldham Athletic	.....
K	Hartlepoons U. v. Accrington S.	.....
L	Wrexham v. Lincoln City	.....
M	York City v. Doncaster Rovers	.....
N		.....


● When passing  
through  
**HARPENDEN**  
pay a visit to  
"The  
**MARQUIS of  
GRANBY**"  
PROPRIETOR - TOM HODGSON  
(Ex-Capt., Luton Town F.C.)  
FULLY LICENSED  
TEA GARDENS

TO  
LET

### To-Day's Half-Time Scores FIRST LIST

A	Arsenal v. Huddersfield Town	.....
B	Birmingham v. Middlesbrough	.....
C	Brentford v. Preston North E.	.....
D	Derby C. v. Wolverhampton	.....
E	Leeds U. v. Chelsea	.....
F	Liverpool v. Portsmouth	.....
G	Manchester City v. Everton	.....
H	Newcastle U. v. Barnsley	.....
K	Notts Forest v. Stockport C.	.....
L	Southampton v. Chesterfield	.....
M	Aldershot v. Reading	.....
N	Bournemouth v. Clapton O.	.....

NOTE—The Letter in the Programme corresponds with the letter on the Board—thus A 0-1 means that the first-named Club has scored 0 and their opponents 1.

MONO  BRAND  
REGD.

### SPECIALITIES

Paint and Enamel  
Manufacturers  
"Stuart" Series  
Wallpapers

**OGDEN &  
CLEAVER**  
Stuart Street, LUTON

TELEPHONE 580

## Alma G. Peck

BUILDER ——— CONTRACTOR ——— DECORATOR

5 and 7, WENLOCK STREET

LUTON

PHONES 1752 - 3095

## Don't Miss a Match this Season

through working extra time. You can get the REQUIRED OUTPUT in LESS time if you equip your factory with —

## "FARRBEST" HAT MACHINERY

GEO. F. FARR, The "Farrbest" Hatter's Engineer  
COLLINGDON STREET, LUTON

ESTABLISHED 1909

Telephone:  
Luton 2055 (2 lines)

Telegrams:  
"Farrbest," Luton

# MARES

for  
**Caps**

Charles  
**MARES Limited**  
George Street & Dunstable Road  
LUTON And at St. Albans

T  
O  
D  
A  
Y

## PALACE THEATRE

T  
O  
D  
A  
Y

JACK HULBERT CICELY COURTNEIDGE

IN  
"TAKE MY TIP" (U)

NEXT WEEK

NEXT WEEK

Madeleine Carroll and Freddie Bartholomew in  
"Lloyds of London" (U)

Our Brew owes its outstanding successes to no fancy claims

# J.W. GREEN'S

IS  
JUST GOOD BEER

AND  
**beer is best**

Obtainable of all Tenants and Agents, and  
J. W. GREEN LIMITED, The Brewery, LUTON

Telephone - Luton 3131

## L.M.S. RAILWAY

### EXCURSION to BIRMINGHAM

Monday, September 6th, 1937

Luton - - - dep. 2.5 p.m.  
Witton - - - - - arr. 5.38 p.m.  
Nearest station to football ground  
Birmingham New Street arr. 5.52 p.m.

Return Train—  
Birmingham New Street dep. 9.15 p.m.  
Witton - - - - - dep. 9.25 p.m.

FARE 5/-

### Football here again

SO NOW IS THE TIME TO BUY YOUR WINTER SPORTS REQUISITES FOOTBALL, RUGBY HOCKEY and DARTS GOALS a Speciality

The Jerseys, Knicks, Hose and Manfield Boots worn by the Players of Luton Town F.C. were supplied by us Agents for "T" Footballs and Manfield Hotspur Football Boots

SEE WINDOWS  
**G. A. WILD AND SONS**  
Sports Outfitters  
LUTON and DUNSTABLE

### BOOK AT BAILEY'S

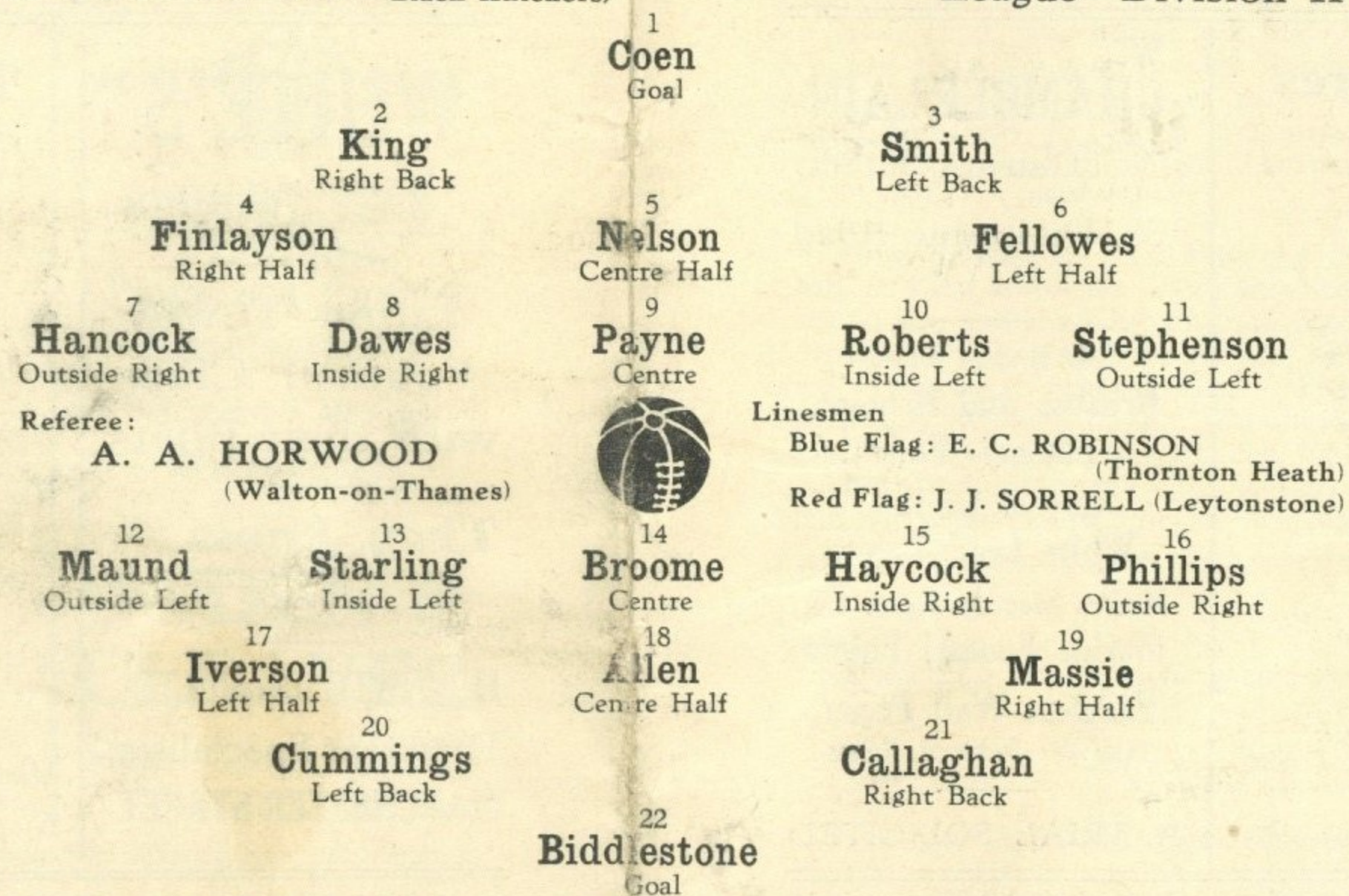
FOR  
LONDON COASTAL COACHES  
ALL INDEPENDENT SERVICES  
JERSEY AIRWAYS  
LONDON THEATRES  
AND AMUSEMENTS

Daily Services to all parts of Great Britain

TOBACCONIST AND BOOKING AGENT  
38, NEW BEDFORD ROAD  
LUTON  
Phone 1972

### LUTON TOWN (White Shirts Black Knickers)

### League—Division II



### ASTON VILLA (Claret and Light Blue Shirts White Knickers)

Kick-Off 6.30 p.m.

### WE'RE THERE!

## BIRD'S

for  
BUILDING AND DECORATIVE MATERIALS

CHARLES BIRD & SONS, Limited  
Collingdon Street, LUTON  
Telephone 1255

— Also —  
Corrugated Iron, Wire Netting, Chain Link Fencing, Chestnut Paling, Creosote and Garden Sundries

## HARRY CANHAM

Cardboard Box  
Packing Case, Ply Box and  
Crate Manufacturer  
9a, MARKET HILL, LUTON  
TELEPHONE 458

For a GOOD DINNER  
TEA or SUPPER

try  
**J. BEDDALL**

PARTIES CATERED FOR  
SATISFACTION ASSURED

67, LEAGRAVE ROAD  
LUTON

A few minutes walk from the  
Football Ground

## WINES AND SPIRITS

R. H. Marks Ltd.

69, George Street  
and at 81, High Town Road

Luton

AGENTS FOR

MANN, CROSSMAN & PAULIN LTD.  
BEERS and STOUTS

## "THROW-IN"

your lot with us and  
BUY YOUR OWN HOUSE

We also offer  
A GOOD INVESTMENT

Write for our attractive terms:

LUTON & MIDLANDS  
BUILDING SOCIETY

Telephone: Luton 1067

11, George St.  
West  
LUTON

## WEBDALE'S

of WELLINGTON STREET

FOR

Kitchen Equipment

AND ALL

Household Requirements

AT LOWEST PRICES

21 to 27 WELLINGTON STREET  
Phone: Luton 41 LUTON

**Charnley**  
and Sons

REGISTERED  
OPTICIANS

National Health  
Insurance

On the Official List of  
H.S.A. Opticians

11, Wellington Street  
LUTON

Telephone 1808

**TO LET**

**E. A. GREEN**

BOOKSELLER  
NEWSAGENT  
STATIONER

Luton's Most  
Progressive Circulating  
Library

21a, New Bedford Road  
and 228, Biscot Road

LUTON

Telephone 476

**F. WHITE**

Builder  
and  
Contractor

141,  
Stockingstone Road  
LUTON



All Classes of  
Repairs, Painting and  
Decorating Under-  
taken

ESTIMATES FREE

**To-Day's Half-Time Scores**

THIRD LIST

A	.....
B	.....
C	.....
D	.....
E	.....
F	.....
G	.....
H	.....
K	.....
L	.....
M	.....
N	.....

**W. CHAMBERLAIN & Co.**

Proprietors—  
A. M. Chamberlain  
R. Deadman

106, Dunstable Road  
LUTON

Best British Made  
Brushes and Brooms  
Enamel Ware

City of London  
White Lead Paint

Messrs Merrediths & Co.  
Merlac Enamel Paints

Fadeless Wall Paper  
Ask for Pattern Books

A TRIAL SOLICITED

**W. HOLES**

3, Gordon Street, Luton

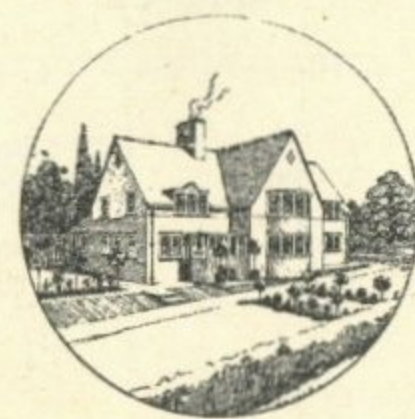
Coal and  
Coke Merchant

Authorized Agent for  
Luton Gas Company's  
large and graded coke

Agent for

L.M.S. Passenger Dept.

Telephone 210



Telephone: Luton 2126.

**P. W. SMITH,**

BUILDER

HIGH CLASS DECORATOR

CONTRACTOR

418, Dunstable Road,

Luton.



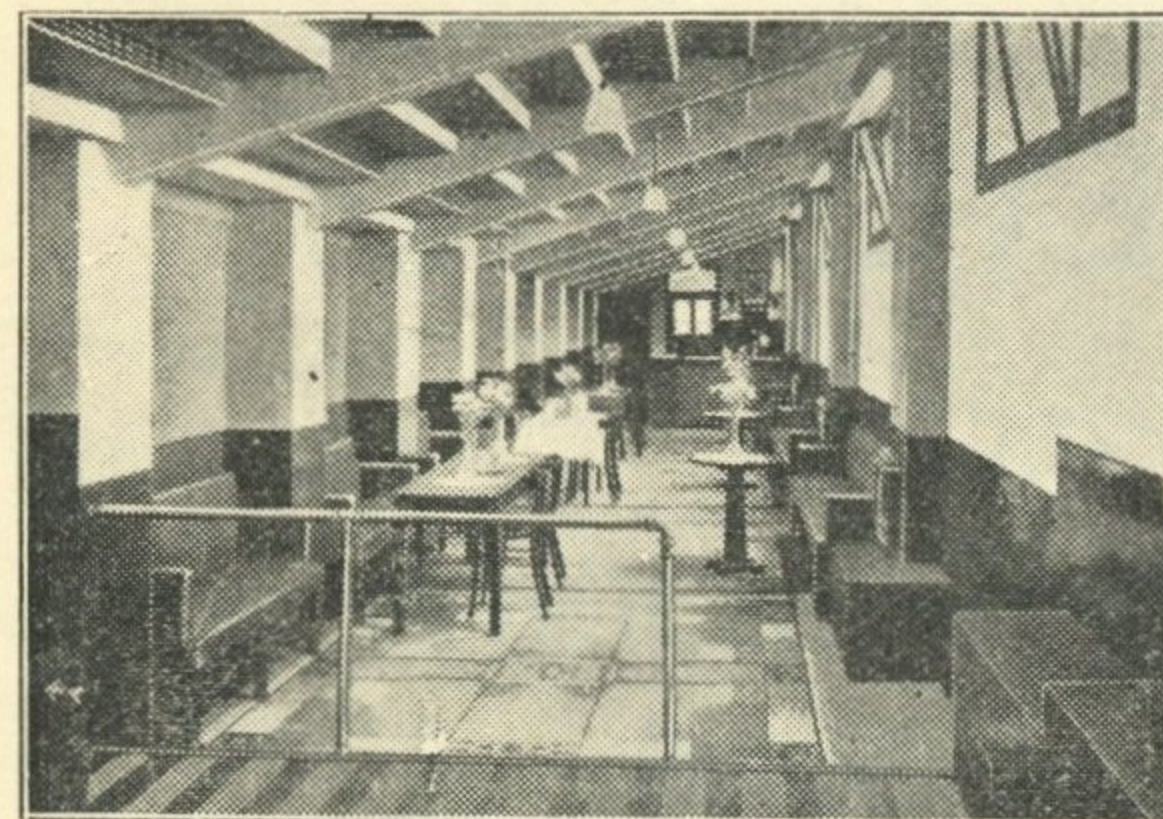
**BOBBERS STAND CLUB**

President: P. W. Wright, Esq.

Hon. Secretary-Treasurer: J. Collier.

Committee: Messrs F. Cooper, F. Dean,  
A. Flitton, E. Gibbs, J. Meades, S. Setchell.

'Phone 2566.



The Bobbers Committee desire to take this opportunity of wishing the Boys every success in the coming season. At the same time may we remind the supporters, whether Bobbers or not, that some responsibility for the success of the team rests on ourselves and we hope all will do their part. We feel that the good results obtained last season were due in no small part to two factors, the magnificent way in which the supporters rallied round the Club and the splendid team spirit amongst the players.

Now a word in regard to the Bobbers Stand Club and its activities. We want to be of service both to you and the Club and we can only do this if you will help and support us. First of all we want everyone to join our Club. The Membership Fee is only 1/2 per annum. Membership Forms are issued to all the Tea Bars on the Ground and can also be obtained in the Club Room. Membership entitles you to take part in the Winter Tournaments

that the Games Committee intend to run amongst the Members. The Refreshment Bars round the Ground have all been built by us and these, we are sure, will be well patronised. By so doing you will not only assist us to give you something for your cash, but at the same time will aid the Directors of the Football Club in regard to finance. All the catering on the Ground is now under the management of the Bobbers Stand Club. Last, but not least, it is our intention to organise excursions for away matches at cheap rates. This with the co-operation of the Railway Company. To do this, however, it must be realised that we shall have to have early applications. Last Saturday we took a train load to Stockport, and those that went have asked for another run to be booked up, so do not fail to purchase a Programme to find out in these notes all full particulars. Failing this look in at the Club Room on match days.

Now an appeal to the lady supporters. We were very pleased to see so many ladies travel by the train to Stockport. We have over 400 lady members in our club, but we want more, so now is a chance for you to become a Bobber. Membership saves you a lot of trouble when you wish to go away to watch your favourites play. We send small parties as well as long corridor trains, so just make up your minds and join at once.

*Luton's Oldest and Largest  
Restaurant*

SEATING ACCOMMODATION FOR 300

ESTABLISHED 65 YEARS

*Private Parties Catered For*

**CENTRAL  
RESTAURANT**

20-22-24, CHEAPSIDE

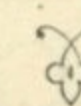
PHONE 172

Proprietor: S. G. Primell

**A. E.  
NICHOLLS**

Wholesale  
CONFECTIONER & TOBACCONIST

CAN SUPPLY YOU WITH  
EVERYTHING YOU WANT  
FOR THE TOBACCO AND  
CONFECTIONERY TRADE  
AT LOWEST PRICES



Prompt Delivery and Civility

16, MILL STREET, LUTON

'Phone: Luton 902



FIXTURES 1937-8

FIRST XI Division II		F. A.
Sat., Aug. 28	Stockport County ...	A 1 2
Wed., S. pt. 1	Aston Villa ...	H 3 2
Sat., " 4	Manchester United ...	H
Mon., " 6	Aston Villa ...	A
Sat., " 11	Sheffield United ...	A
Wed., " 15	Newcastle United ...	A
Sat., " 18	Tottenham Hotspur ...	H
Sat., " 25	Burnley ...	A
Sat., Oct. 2	Bury ...	H
Sat., " 9	Coventry City ...	A
Sat., " 16	Bradford ...	A
Sat., " 23	West Ham United ...	H
Sat., " 30	Southampton ...	A
Sat., Nov. 6	Blackburn Rovers ...	H
Sat., " 13	Sheffield Wednesday ...	A
Sat., " 20	Chesterfield ...	H
Sat., " 27	Plymouth Argyle ...	A
Sat., Dec. 4	Fulham ...	H
Sat., " 11	Swansea Town ...	A
Sat., " 18	Norwich City ...	H
Sat., " 25	Barnsley ...	H
Mon., " 27	Barnsley ...	A
Sat., Jan. 1	Stockport County ...	H
Sat., " 8	Manchester United ...	A
Sat., " 15	Sheffield United ...	H
Sat., " 22	Tottenham Hotspur ...	A
Sat., " 29	Tottenham Hotspur ...	A
Sat., Feb. 5	Burnley ...	H
Sat., " 12	Bury ...	A
Sat., " 19	Coventry City ...	H
Sat., " 26	Bradford ...	H
Sat., Mar. 5	West Ham United ...	A
Sat., " 12	Southampton ...	H
Sat., " 19	Blackburn Rovers ...	A
Sat., " 26	Sheffield Wednesday ...	H
Sat., April 2	Chesterfield ...	A
Sat., " 9	Plymouth Argyle ...	H
Fri., " 15	Nottingham Forest ...	A
Sat., " 16	Fulham ...	A
Mon., " 18	Nottingham Forest ...	H
Sat., " 23	Swansea Town ...	H
Sat., " 30	Norwich City ...	A
Sat., May 7	Newcastle United ...	H

RESERVE FIXTURES London Combination		F. A.
Sat., Aug. 28	Southend United ...	5 1 H 3 1
Thur. Sept. 2	Clapton Orient ...	0 1 A 7 0
Sat., " 4	Portsmouth ...	0 3 A
Wed., " 8	Clapton Orient ...	0 1 H
Sat., " 11	Chelsea ...	3 2 H
Wed., " 15	Bournemouth ...	1 3 A
Sat., " 18	Tottenham Hotspur ...	1 5 A
Wed., " 22	Leicester City ...	1 2 H
Sat., " 25	Queens Park Rangers ...	4 0 H
Mon., " 27	Leicester City ...	1 2 A
Sat., Oct. 2	Charlton Athletic ...	0 3 A
Sat., " 9	Brighton & Hove A. ...	1 2 H
Wed., " 13	Bristol City ...	1 1 A
Sat., " 16	Swansea Town ...	2 0 H
Sat., " 23	Crystal Palace ...	1 2 A
Sat., " 30	Reading ...	6 2 H
Sat., Nov. 6	Fulham ...	1 1 A
Sat., " 13	Millwall ...	5 3 H
Sat., " 20	Brentford ...	0 3 A
Sat., " 27	Arsenal ...	1 1 H
Sat., Dec. 4	Southampton ...	0 5 A
Sat., " 11	West Ham ...	1 2 H
Sat., " 18	Watford ...	3 3 A
Sat., " 25	Coventry City ...	1 2 A
Mon., " 27	Coventry City ...	0 5 H
Sat., Jan. 1	Southend United ...	1 1 A
Sat., " 8	Northampton Town ...	3 4 H
Sat., " 15	Portsmouth ...	1 1 H
Sat., " 22	Chelsea ...	1 2 A
Sat., " 29	Tottenham Hotspur ...	3 2 H
Sat., Feb. 5	Queens Park Rangers ...	1 2 A
Sat., " 12	Charlton Athletic ...	1 1 H
Sat., " 19	Brighton & Hove A. ...	3 2 A
Sat., " 26	Swansea Town ...	1 0 A
Sat., Mar. 5	Crystal Palace ...	2 5 H
Sat., " 12	Reading ...	1 1 A
Sat., " 19	Fulham ...	4 0 H
Sat., " 26	Millwall ...	2 9 A
Sat., April 2	Brentford ...	4 2 H
Sat., " 9	Arsenal ...	0 10 A
Fri., " 15	Northampton Town ...	1 4 A
Sat., " 16	Southampton ...	3 1 H
Tues., " 19	Bristol City ...	1 1 H
Sat., " 23	West Ham ...	1 6 A
Sat., " 30	Watford ...	5 1 H
Wed., May 4	Bournemouth ...	2 1 H

LEAGUE TABLES

LEAGUE DIVISION II							
	Pld.	Won	Lost	Drn.	For	Agst.	P.
Tottenham Hotspur	2	1	0	1	4	0	3
Coventry City	2	1	0	1	1	0	3
Aston Villa	1	1	0	0	2	0	2
Chesterfield	1	1	0	0	1	0	2
Manchester United	2	1	1	0	3	1	2
Plymouth Argyle	2	1	1	0	5	2	2
Stockport County	1	1	0	0	2	1	2
Bradford	1	1	0	0	4	3	2
Norwich City	1	1	0	0	4	3	2
Sheffield United	2	1	1	0	2	2	2
Blackburn Rovers	2	1	1	0	4	4	2
Swansea Town	2	1	1	0	4	4	2
West Ham United	2	1	1	0	2	3	2
Burnley	2	1	1	0	2	4	2
Bury	2	1	1	0	1	2	2
Barnsley	1	0	1	0	3	4	0
Southampton	1	0	1	0	3	4	0
LUTON TOWN	1	0	1	0	1	2	0
Notts Forest	1	0	1	0	1	2	0
Sheffield Wednesday	1	0	1	0	0	1	0
Newcastle United	1	0	1	0	0	3	0
Fulham	1	0	1	0	0	4	0

LONDON COMBINATION							
	Pld.	Won	Lost	Drn.	For	Agst.	P.
Fulham	2	2	0	0	2	0	4
Millwall	2	2	0	0	3	1	4
West Ham United	1	1	0	0	4	0	2
Bristol City	1	1	0	0	2	0	2
Portsmouth	1	1	0	0	2	0	2
Crystal Palace	1	1	0	0	1	0	2
Arsenal	2	1	0	0	6	1	2
LUTON TOWN	1	1	0	0	3	1	2
Coventry City	2	1	1	0	6	4	2
Northampton	2	1	1	0	1	2	2
Bournemouth	1	0	0	1	1	1	1
Tottenham Hotspur	1	0	0	1	1	1	1
Watford	1	0	1	0	3	6	0
Charlton Athletic	2	0	2	0	1	3	0
Southend United	1	0	1	0	1	3	0
Brentford	1	0	1	0	0	1	0
Reading	1	0	1	0	0	1	0
Southampton	1	0	1	0	0	2	0
Leicester City	1	0	1	0	0	4	0
Swansea Town	1	0	1	0	0	6	0
Brighton & Hove A.	0	0	0	0	0	0	0
Chelsea	0	0	0	0	0	0	0
Clapton O.	0	0	0	0	0	0	0
Queens Park Rangers	0	0	0	0	0	0	0

# Edward Martell & Co., Ltd.

TELEPHONE 896-7 Coal and Coke Merchants ESTABLISHED 1879  
 24, UPPER GEORGE STREET, LUTON

## Burn "Hucknall" Ashless Coal It Scores Every Time!!

Popular Price! Saves Labour!! Great Heat!!!

WHY NOT TRY IT?

### WELL DONE LUTON TOWN!

you deserve  
 a packet of  
**SWEET ROSEMARY**

TOBACCO

from

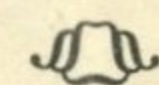
**W. & F. FAULKNER LONDON**

BRANCH OF THE IMPERIAL TOBACCO CO. (OF GREAT BRITAIN AND IRELAND), LIMITED

For  
**PRINTING**

THAT  
**SATISFIES**

both for  
 Price and Quality



**E. A. ALLEN**

424, Dunstable Road, Luton

TELEPHONE 1626



# CONGRATULATIONS

Partridges take this opportunity at the commencement of the season to congratulate the Town Club on its magnificent achievement in obtaining promotion. It was certainly a long time to wait before they became Champions of the 3rd Division—but—there's no need to wait at all for the best Sports Goods and Value ——— if you consult Partridges immediately ———

All Winter  
Sports Requisites  
Stocked.  
Special Terms to  
Clubs

FOOTBALLS  
JERSEYS  
KNICKERS  
SHINGUARDS  
HOSE-BOOTS  
GOAL NETS  
KIT BAGS ETC.

Every Article  
Guaranteed and will  
be replaced if proved  
defective.  
Your Satisfaction  
assured.

**Did he pass  
you on the level..**

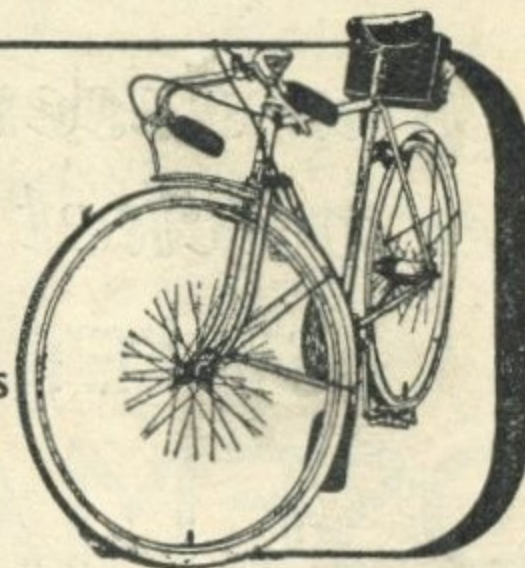


**did he leave  
you on the hills?**

*-he's riding the easy running*

**RALEIGH**  
THE ALL-STEEL BICYCLE

Models  
from  
5 Gns.  
Easy Terms  
Arranged  
Ask for  
Catalogue



**A.G. Partridge & Co**

PHONE 234

10-12 CHAPEL ST.  
LUTON

LUTON'S  
LEADING  
SPORTS  
DEALERS

LUTON'S  
LEADING  
CYCLE  
DEALERS