



PRICE  
TWO PENCE

League III (Southern)

February 6th, 1937.

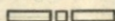
LUTON TOWN v. QUEENS PARK RANGERS

# "TRUE-FORM"

THE FINEST FOOTWEAR  
IN THE TOWN



BUY DIRECT FROM THE MAKERS



LOCAL BRANCH:

44, GEORGE STREET.

Head Office and Factories: NORTHAMPTON.



Insist upon the  
Building Materials for  
your new house coming from

# POWDRILL'S

BUILDERS' MERCHANTS  
COAL and COKE MERCHANTS  
BRICK MANUFACTURERS  
SAND & GRAVEL QUARRY OWNERS

GEORGE POWDRILL & SON LTD., 1, 3 & 5, HITCHIN ROAD, LUTON  
TELEPHONE 2073 (2 Lines)

Alma Works, Lancrerts Path  
Alma Street, LUTON  
BEDS.



Telephone  
Luton 571

WOOD & METAL BLOCKMAKERS

HAT  
MANUFACTURERS  
KICK OFF WITH A TRIAL WITH US

All Blocks and Pans made on Own  
Premises by Highly Skilled Men  
with Long Standing Experience

## Luton Town Football and Athletic Co.,



LIMITED

Telephone No. 1560.

President: Alderman Harry Arnold, C.A., J.P.

Directors:

Chairman: Councillor Chas. Jeyes, C.C.

Messrs **Edward Mouse (Vice-Chairman)** Frank J. Andrews, Stanley H. Godfrey, C.C.,

Horace S. Hewson, Percival G. Mitchell, C.C., E. Hugh Woods, Philip W. Wright.

Team Manager: Mr. E. Liddell.

Secretary: Mr. A. E. Wickson.

Honorary Medical Officer: E. J. Crarer, M.B., Ch.B.

WE have very attractive opposition here this afternoon, our visitors being none other than our old friends and rivals, Queens Park Rangers.

Although this term the Rangers have not been the force which was their lot last season they can always be relied upon to put up stern opposition and a glimpse at past seasons records amply verifies this statement. How well the final match of last season is remembered when a large contingent of Luton supporters made the trek to Shepherds Bush hoping against hope that Torquay would either draw or beat Coventry and that we would defeat the Rangers and so gain the coveted promotion to the Second Division. Alas it was not to be, Coventry beat Torquay and we played a goalless draw at Shepherds Bush. In October last we had another stern struggle with the West London team eventually being defeated by the odd goal in three.

The Rangers have a very formidable away record so far this season; Exeter City were defeated by three clear goals, Newport County and Notts County by two goals to one and Walsall succumbing by four goals to two, whilst drawn games have been effected at Aldershot, Bristol Rovers, Clapton Orient, Crystal Palace and Torquay United. But for a few lapses on their own enclosure the Rangers would have been well among the leaders. It will be seen from the above that they are not to be treated lightly today, especially as they have a slight advantage over us, not having been called upon to play a hard mid-week cup tie, although in fairness to them it must be said they had a League encounter with Walsall at Shepherds Bush on Thursday.

The following are a few notes of the players who will probably be wearing the blue and white hooped shirts this afternoon.

**Mason** (goalkeeper) In his fourth season with the Rangers, Mason has not missed a game this season, and has been playing better than ever before. He began his career with Wimbledon, and afterwards played for Fulham.

**Barrie** (right back) A reserve who came into the side when Rowe was injured a week or two ago. Has been with the Rangers for many years, and had a great deal of first eleven experience.

**Jefferson** (left back) This young back is in his second season with the Rangers, joining the club from Peterborough. Can play on either flank with equal ease, and is definitely a coming player. Was injured in the game with Walsall

on Thursday, so must be a doubtful starter today.

**March** (right half) One of the Rangers' oldest servants, as he has been with the club for six years. A strong half back of the terrier type. March joined the club from junior football. Has only missed one match this season.

**Farmer** (centre half) Won his place in the first eleven in the middle of December, and has been playing well ever since. This is his fourth year at Loftus Road, and was once a wing half with Notts Forest.

**Moralee** (left half) The former Bournemouth half who came to the Rangers at the start of the season. Has only played two games in the first eleven, but seems to have won his place. Spent six years at Bournemouth and was formerly with Huddersfield.

**Bott** (outside right) Cost the Rangers a big fee when he joined them at the start of the season from Newcastle, for whom he played in thirty-seven first eleven games. Was also with Huddersfield for three years, joining them from Doncaster. Is one of the best wingers in the Third Division.

**Lowe** (inside right) Well known to Luton fans as the former Watford forward, and has rendered the Rangers fine service in the two years he has been with them. Is the club's leading scorer with 11 goals.

**W. Charlton** (centre forward) The amateur international who joined the Rangers this season. Was kept out of the game until December by an appendicitis operation. Is an Oxford blue, has played for the Corinthians, Southampton and Hull City.

**Fitzgerald** (inside left) Came to the club from Reading during the close season as a half-back, but was tried out by Manager Birrell as an inside forward and was a great success. Has scored six goals.

**McMahon** (outside left) Another recruit from Reading, who has been showing exceptional form in recent weeks. Fitzgerald and he form a most dangerous wing.

**Cheetham** (centre forward) The leading League scorer last season, but was injured against Brighton the other week and has not played since. A product of Army football.



## DEATH OF MR. EDWARD MOUSE

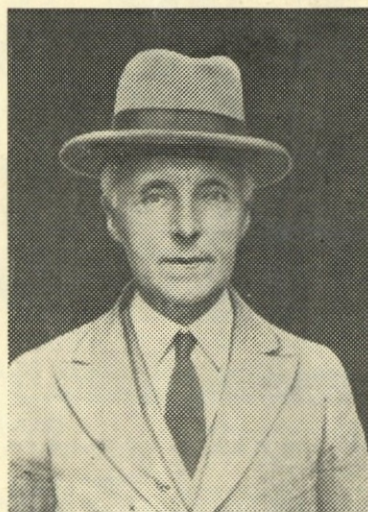
WE are all grieving today for the loss of Mr. Edward Mouse, Vice-Chairman of the Board of Directors, and the oldest member of the Board.

Mr. Mouse has been ailing for several months, and his death took place at the Bute Nursing Home on Thursday night, coincident with his birthday, for he was exactly seventy-one years old on that day.

With remarkable fortitude and patience Mr. Mouse had borne the pain and suffering of two severe operations, and there was every hope that he would recover, but his heart failed to stand the strain, and he passed away very peacefully.

Mr. Mouse had been a keen footballer and cricketer in his younger days, and long before he became a member of the Board of Directors he had been a regular supporter of the Town Club.

He took a prominent part in the work of the old Supporters' Club of pre-war days, and it was in the season before the War that he joined the Board.



He held very strongly to his opinions, but was greatly liked by officials, players and supporters. He rendered much technical assistance when necessary, and his advice was often invaluable.

When Mr. Harry Arnold retired from the Chairmanship and was made President of the Club, Mr. Mouse became Vice-Chairman, and had held the office ever since.

This season, in spite of his ill health, he has keenly followed the affairs of the Club, and was particularly delighted over the success at the replay at Blackpool.

We shall miss Mr. Mouse very much indeed, and our deepest sympathy is extended to Mrs. Mouse, and Messrs Percy and Edward Mouse, the sons, who have

all shared his enthusiasm in the progress of the Club.

The funeral takes place on Thursday. The first part of the ceremony will be held at the house, "Beechwood," Hazelbury Crescent, at 3 o'clock, and the interment will be at the General Cemetery, at 3.30.

## PLAYERS' APPEARANCES

	League III		London Combination		F.A. Cup		Other Matches		Total	
	App.	Goals	App.	Goals	App.	Goals	App.	Goals	App.	Goals
Ball J. T. ...	15	8	6	4			4		25	12
Beresford, F. E. ...			11	3			7	6	18	9
Booton, H. ...			21				6	1	27	1
Coen, J. L. ...	2		26				7		35	
Crompton, W. ...	1		9	1			5	1	15	2
Dawes, A. G. ...	6	2							7	2
Dolman, H. W. ...	22		1		4		5		32	
Fellowes, W. J. ...	23	1			4		7		34	1
Finlayson, J. ...	23				4		7	1	34	1
Godfrey, W. P. B. ...	1		14				5		20	
Gooney, W. H. ...			12				5		17	
Hancock, E. ...	2		5	6	1		2	1	10	7
Hodge, J. ...	16	1	6	2	2		7	1	31	4
Hogg, F. ...			5	2			3	1	8	3
Hosier, F. J. ...			12	2			3	2	15	4
Hubbard, A. ...	2		17				5		24	
Kidd, G. I. ...			22				5		27	
Kingham, H. R. ...			16				6		22	
Lutterloch, B. ...	1		19	2			7	3	27	5
McGinnigle, H. ...	1		21				6		28	
Mackey, T. S. ...	22				4		4		30	
Martin, G. S. ...	3		14	3	1		1		19	3
Mills, H. ...	2		16	2			6	11	24	13
Nelson, J. ...	23				4		5		32	
Payne, J. ...	22	29			4	3	3	9	29	41
Rich, L. T. ...	6	2	17	5	1		6		30	8
Roberts, F. ...	24	3			4	3	5	1	33	7
Sloan, F. ...			24	5	3	1	3	3	30	9
Smith, T. S. ...	24				4		5		33	
Stephenson, G. H. ...	21	10			4	1	4	1	29	12
Stevens, R. F. ...	2		14	4			4	2	20	6
Amateurs and Others ...			12	9			17	7	29	16

## ATTENDANCE BAROMETER

1935		1936		1935		1936	
Aug. 31	Aug. 29	Aug. 31	Southend United	...	...	14353	705 11 1
Sept. 2	Sept. 5	Sept. 7	Southend United Reserves	...	...	3469	89 11 9
Sept. 7	Sept. 12	Sept. 14	Watford Reserves	...	6034		
Sept. 9	Sept. 16	Sept. 19	Bournemouth Reserves	...	3639	159 17 3	
Sept. 14	Sept. 21	Sept. 25	Portsmouth Reserves	...	...	92 3 6	
Sept. 16	Sept. 26	Oct. 3	Southend United	...	13992	635 19 4	6048 161 8 11
Sept. 21	Oct. 3	Oct. 10	Walsall	...	...	...	11043 486 8 0
Sept. 25	Oct. 10	Oct. 17	Bournemouth	...	9011	386 1 4	13790 707 18 3
Sept. 28	Oct. 17	Oct. 24	Crystal Palace	...	...	...	...
Oct. 5	Oct. 24	Oct. 31	Clapton Orient Reserves	...	4064	104 19 6	...
Oct. 12	Nov. 7	Nov. 14	Queens Park Rangers	...	7878	331 12 0	...
Oct. 19	Nov. 14	Nov. 21	Tottenham Hotspur Reserves	...	...	...	5659 150 14 11
Oct. 26	Nov. 21	Dec. 5	Crystal Palace	...	12842	582 6 6	1585 39 18 11
Nov. 2	Dec. 5	Dec. 12	Leicester City Reserves	...	...	...	...
Nov. 9	Dec. 12	Dec. 19	Brentford Reserves	...	2620	66 10 6	16378 820 18 0
Nov. 16	Dec. 19	Dec. 26	Reading	...	...	...	...
Nov. 23	Dec. 26	Jan. 2	Northampton Reserves	...	5582	146 19 11	3558 91 13 10
Dec. 7	Jan. 2	Jan. 9	Queens Park Rangers Reserves	...	...	...	...
Dec. 14	Jan. 9	Jan. 16	Cardiff City	...	11950	538 16 6	13255 629 1 7
Dec. 21	Jan. 16	Jan. 23	Bristol City	...	...	...	...
Dec. 25	Jan. 23	Feb. 1	Reading Reserves	...	4755	125 14 3	20569 107 17 1
	Feb. 1		Watford	...	...	...	...
			Brighton and Hove Albion	...	10363	463 5 10	4120 107 15 2
			Southampton Reserves	...	...	...	...
			West Ham United Reserves	...	4256	111 0 4	11305 591 16 2
			Bournemouth	...	...	...	...
			Newport County	...	9788	441 12 2	3080 80 12 3
			Fulham Reserves	...	...	...	...
			Leicester City Reserves	...	3156	80 15 8	12784 599 6 4
			Bristol Rovers	...	...	...	...
			Swindon Town	...	11893	540 3 6	3223 83 3 0
			Millwall Reserves	...	...	...	...
			Arsenal Reserves	...	7805	206 13 0	3452 90 4 1
			Northampton Reserves	...	...	...	...
			Brighton & Hove Reserves	...	2912	76 5 11	...
			Bristol City	...	10842	484 13 4	2935 77 1 4
			Brighton and Hove Reserves	...	...	...	...
			Chelsea Reserves	...	3842	100 8 8	...
			Fulham Reserves	...	4206	114 4 6	17308 889 5 6
			Notts County	...	...	...	...
			Notts County	...	17835	940 13 8	4102 112 6 9
			Reading Reserves	...	...	...	...
			Clapton Orient	...	13289	665 8 1	1808 46 16 1
			Clapton Orient Reserves	...	...	...	12093 568 2 4
			Cardiff City	...	...	...	...
			Charlton Athletic Reserves	...	4568	118 18 3	3382 88 3 5
			Charlton Athletic Reserves	...	...	...	...
			Northampton	...	12504	511 11 4	10003 476 5 4
			Exeter City	...	...	...	...
			Southend United Reserves	...	3323	86 12 6	...
			Reading	...	15453	758 9 0	659 16 9 8
			Chelsea Reserves	...	...	...	...
					218404	8868 16 1	200261 8782 4 3

As there seems some little amount of controversy regarding the inclusion of the number of Season Ticket Holders in the attendance figures, the Editor wishes to state that the total number of Season Ticket Holders (whether present or otherwise) IS included in the League III attendances but NOT in the London Combination attendances.

**Next Match, Saturday, February 13th.**

**LONDON COMBINATION**  
**LUTON TOWN RESERVES v. BRISTOL CITY RESERVES**

KICK-OFF 3.15 p.m.

**Wednesday, February 10th.**

**LONDON MID-WEEK LEAGUE**

**LUTON TOWN RES. v. SOUTHEND UNITED RES.**

KICK-OFF 3.15 p.m.

**USUAL PRICES OF ADMISSION**



If your thoughts are centred on house purchase you cannot do better than to pass us your requirements. You will find we have just the house you are looking for, and will be pleased with the courteous and efficient manner in which your business is attended to

## SELL & MITCHELL

Auctioneers, Land & Estate Agents, Surveyors & Valuers

7-9, PRINCESS STREET  
LUTON

TELEPHONES 2003-4

Also 95, HIGH STREET NORTH  
DUNSTABLE

Telephone 354

District Agents for Woolwich Equitable Building Society

ESTABLISHED 1879

TELEPHONE  
1375 LUTON

**E. H. SMITH**

Complete

House Furnisher

CABINET MAKER

UPHOLSTERER

BEDDING MAKER

□

Removals a Speciality

□

42, Leagrave Road  
LUTON

### To-Day's Half-Time Scores

#### FIRST LIST

A	Aldershot v. Gillingham	1.0
B	Bristol Rovers v. Watford	0.1
C	Cardiff City v. Reading	1.1
D	Clapton O. v. Torquay Utd.	0.0
E	Crystal Palace v. Exeter City	4.0
F	Millwall v. Southend United	0.2
G	Northampton v. Brighton	2.0
H	Notts County v. Bournemouth	0.1
K	Swindon T. v. Newport Co.	1.0
L	Walsall v. Bristol City	0.5
M	Chester v. Hartlepool United	1.0
N	Lincoln City v. Darlington	0.3

NOTE—The Letter in the Programme corresponds with the letter on the Board—thus A 0-1 means that the first-named Club has scored 0 and their opponents 1.

MONO BRAND



#### SPECIALITIES

Paint and Enamel  
Manufacturers

"Stuart" Series  
Wallpapers

□

**OGDEN &  
CLEAVER**

Stuart Street, LUTON

TELEPHONE 580

Telephone :: Luton 1752

# ALMA G. PECK

Builder and Contractor

WHEN wanting a house in Luton or district,  
either to purchase or rent, pay me a visit

5 and 7, WENLOCK STREET :: :: LUTON

## Clothes for Men with a Taste for Style!

The more critical you are, the more you will be satisfied with your purchases from Blundells. Up-to-date styles...dependable qualities...supreme values, await you here. Every item of wear, from socks to hat, at the keenest of prices.

**BLUNDELL Bros.** (LUTON) LTD.  
MEN'S DEPT. 12, CHEAPSIDE, LUTON.



Phone 223 Est. 1860

**H. WHITE**

(LUTON) LTD.

Luton's Largest  
Footwear Stores

FOR

**FOOTBALL  
BOOTS**

as supplied again  
to Luton Town  
Football Club

26/30, Manchester St.

### To-Day's Half-Time Scores

#### SECOND LIST

A	Arsenal v. Manchester United	0.1
B	Birmingham v. Liverpool	2.0
C	Bolton W. v. Wolverhampton	1.1
D	Brentford v. Derby County	4.2
E	Everton v. Sunderland	2.1
F	Leeds Utd. v. Huddersfield T.	1.0
G	Manchester City v. Stoke City	2.0
H	Middlesbrough v. Grimsby T.	0.0
K	Portsmouth v. Chelsea	2.1
L	Preston N. E. v. Sheffield Wed.	1.1
M	West Bromwich v. Charlton A.	1.0
N	Oldham Ath. v. Stockport Co.	0.1

**G. EDWARDS**  
TAILOR OUTFITTER

Wayfarer Raincoats  
30/-

SUITS to...  
.. MEASURE

Aquatite Raincoats  
42/- 50/- 62/-

Shirts, Socks, Ties, Hats,  
Caps, Pullovers,  
Underwear

48, NEW BEDFORD  
ROAD - LUTON

● For the

Assurance of getting correct

Results this season

Rely exclusively on the

**Best.** Get what you

**Expect Now** by

Selecting "**FARRBEST**" every

Time you buy a Machine ●

**GEO. F. FARR**, The "Farrbest" Hatter's Engineer  
COLLINGDON STREET, LUTON

Telephone: LUTON 2055 (2 lines)

ESTABLISHED 1909

Telegrams: "FARRBEST," LUTON



# MARES SALE of Men's Wear

IS NOW ON

Charles  
 **MARES Limited**  
George Street & Dunstable Road  
LUTON And at St. Albans

Football Billiards  
Rugby Dart Boards  
Hockey Badminton  
Boxing Fishing  
Table Tennis  
Shove Halfpenny  
Pin Bagatelle  
Dominoes  
and all Indoor  
and Outdoor Games

**G. A. WILD  
& SONS**  
14, Manchester St., Luton  
Telephone 780  
Also at  
103, High Street N., Dunstable  
Telephone 275

Engineers to the Hat Trade  
for nearly 50 years

**JANES BROS.  
LIMITED**

ADVICE AND  
DEMONSTRATIONS  
GLADLY GIVEN

38 High Town Road  
LUTON  
Phone 242

TO-DAY  
**PALACE  
THEATRE  
LUTON**  
TO-DAY  
WALTER HUSTON RUTH CHATTERTON  
IN  
"DODSWORTH" (A)

NEXT WEEK  
Will Hay in 'WINDBAG the SAILOR'  
(U)

**BOOK  
AT BAILEY'S**  
for  
LONDON COASTAL COACHES  
ALL INDEPENDENT SERVICES  
LONDON THEATRES  
AND  
AMUSEMENTS  
—  
Daily Services to all  
parts of Great Britain  
—  
TOBACCONIST  
AND BOOKING AGENT  
—  
38 New Bedford Road  
Phone LUTON 1972

**LUTON TOWN** (White Shirts  
Black Knickers)

1 Dolman Goal  
2 Mackey Right Back  
3 Smith Left Back  
4 Finlayson Right Half  
5 Nelson Centre Half  
6 Fellowes Left Half  
7 Rich Outside Right  
8 Dawes Inside Right  
9 Payne Centre  
10 Roberts Inside Left  
11 Stephenson Outside Left  
12 McMahon Outside Left  
13 Fitzgerald Inside Left  
14 W. Charlton Centre  
15 Lowe Inside Right  
16 Lumsdon Outside Right  
17 Moralee Left Half  
18 Farmer Centre Half  
19 March Right Half  
20 Rowe Left Back  
21 Barrie Right Back  
22 Mason (W.) Goal

Referee: C. E. ARGENT (St. Albans)

**QUEENS P. R.** (Blue and White Hooped Shirts, White Knickers)

Kick-Off 3 p.m.

**GOOD BEER MAKES  
MANY FRIENDS**  
THAT IS WHY  
**J.W.GREEN'S**  
merits its wonderful popularity  
**beer is best**

J. W. GREEN LTD. - THE BREWERY, LUTON  
Telephone - Luton 1454

**GRAND THEATRE  
LUTON**  
Booking Hours: 10 a.m. to 4 p.m.  
Phone: Luton 141  
Week commencing February 8th  
Twice Nightly at 6.45 and 9 p.m.  
**ERIC RANDOLPH**  
The Famous Gramophone and Revue Star  
in Vocal Creations  
PERCY PRYDE, Phun on a Phono-Phiddle  
NICK and MARIA, Aces of the Accordion  
MARINOFF'S DOGS  
DALEY and O'BRIEN, Comedy Acrobats  
BERT FAYE and his DANCING GIRLS  
BILLY KRAY with MARGI MORRIS  
LA-VELMA, the Lady with the Mystic Eyes  
Strange and Bewildering :: Seeing is Believing

"FIRST PLACE"  
THIS SEASON!  
**BIRDS**

are there for  
**BUILDING  
AND DECORATIVE  
MATERIALS**

CHARLES BIRD & SONS, Limited  
Collingdon Street, LUTON  
Telephone 1255

Also  
Corrugated Iron, Wire Netting,  
Chain Link Fencing, Chestnut  
Paling, Creosote and Garden  
Sundries

Erections Alterations  
General Building Repairs  
Decorations

**A. W.  
SMART**  
Contractor  
240, Biscot Road  
LUTON  
BEDS.  
000

TELEPHONE:  
LUTON 1206

it's the malt that matters  
you get the best in . . .  
**MANN'S BROWN ALE**

**R. H. MARKS LTD., 69 GEORGE ST.**  
and at 81 High Town Road, Luton

Luton's Exclusive Restaurant  
BEFORE THE MATCH  
HAVE YOUR  
**LUNCHEON**  
AFTER THE MATCH  
HAVE YOUR  
**TEA**  
AT

**'STEWART'S'**  
62-64, NEW BEDFORD ROAD, LUTON  
Telephone 2579 Personal Attention

**WEBDALE'S**  
of WELLINGTON STREET  
FOR  
Kitchen Equipment  
AND ALL  
Household Requirements  
at Lowest Prices  
21 to 27 WELLINGTON STREET  
Phone: Luton 41  
LUTON



**Charnley**  
and Sons  
REGISTERED  
OPTICIANS

National Health  
Insurance

On the Official List of  
H.S.A. Opticians

11, Wellington Street  
LUTON

Telephone 1808

★*The*  
*Nearest*  
**CHEMIST**  
**PRATT**

The Post Office  
169, Dunstable Road  
LUTON

**E. A. GREEN**

BOOKSELLER  
NEWSAGENT  
STATIONER

Luton's Most  
Progressive Circulating  
Library

21a, New Bedford Road  
and 228, Biscot Road  
LUTON

Telephone 476

**F. WHITE**

*Builder  
and  
Contractor*

141,  
Stockingstone Road  
LUTON



All Classes of  
Repairs, Painting and  
Decorating Under-  
taken

ESTIMATES FREE

**To-Day's Half-Time Scores**

**THIRD LIST**

A	Barnsley v. Blackpool	21
B	Bradford v. Blackburn Rovers	
C	Burnley v. Southampton	12
D	Coventry City v. Aston Villa	10
E	Doncaster R. v. Bradford City	01
F	Fulham v. Swansea Town	20
G	Newcastle United v. Bury	10
H	Norwich City v. Leicester City	12
K	Plymouth A. v. Chesterfield	11
L	Sheffield Utd. v. Tottenham H.	11
M	West Ham U. v. Notts Forest	11
N	Port Vale v. Rotherham Utd.	17

**W. CHAMBERLAIN**

Proprietors—  
A. M. Chamberlain  
R. Deadman

106, Dunstable Road  
LUTON

Best British Made  
Brushes and Brooms  
Enamel Ware

City of London  
White Lead Paint

Messrs Merrediths & Co.  
Merlac Enamel Paints

Fadeless Wall Paper  
Ask for Pattern Books

A TRIAL SOLICITED

**W. HOLES**

3, Gordon Street, Luton

Coal and  
Coke Merchant

Authorised Agent for  
Luton Gas Company's  
large and graded coke



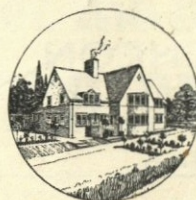
Agent for  
L.M.S. Passenger Dept.

Telephone 210

Telephone : Luton 2126.

**P. W. SMITH,**

BUILDER  
CONTRACTOR



HIGH CLASS  
DECORATOR

418, Dunstable Road, Luton.

**BOBBERS STAND CLUB**

*President* : Philip W. Wright, Esq.

*Hon. Secretary-Treasurer* : J. Collier.

*Committee* : Messrs R. Claridge, F. Cooper, N. Lines, A. Whittaker, E. G. Gibbs, A. Flitton.

Congratulations to our boys for the way they have played in the Cup Competition. Now let us hope that our aim for promotion will be rewarded. Last Saturday, 110 Bedford supporters and members sat down to a meat tea, and also several out of town followers found the Club very convenient for a meal after the match. To our surprise some of the Sunderland Officials came and had a look round the Club premises after the match, and we are pleased to say that they also sat down and had a cup of tea. The Sunderland Officials could not speak too highly of our Club, and they said they have still to go on a football ground where there is accommodation like it. To show their appreciation, Mr. Collier had handed to him the sum of £1 as a donation from the Sunderland Club, and this will go towards our improvements to the Ground. We would also like to point out to any of our supporters who wish to partake of tea after the matches, that they may do so if they will only let us know earlier in the

afternoon. We have received a request from Northampton that a large number will be wanting to purchase meat teas when their Club play us.

**TO-NIGHT**  
**DANCING**

8 p.m. to 12 o'clock

WINTER ASSEMBLY HALL

**MAYFAIR DANCE BAND**

FLOOR TICKETS 2/6

Balcony Only 1/-

Organised by the Bobbers Stand Club

**White Rose Catering Co.**  
(LUTON) LTD.

**HALF  
TIME**

*time  
for a*

**HOT  
CUP OF TEA**

Obtainable under Stands

MAPLE ROAD and  
IVY ROAD ENTRANCES

**RESERVED**

for

A. E.  
**NICHOLLS**

TOBACCONIST

MILL STREET, LUTON



FOR

- WELL BUILT AND RELIABLE HOUSES
- BEST CLASS DECORATIONS
- PERSONAL ATTENTION GIVEN TO ALL CLASS OF REPAIRS
- THE BEST BUILDING SITES IN LUTON

CONSULT

CHARLES JEYES Ltd.

The Luton Builders

17a, Windsor Street, Luton

TELEPHONE  
594

TELEPHONE: LUTON 15

LUTON MOTOR Co., Ltd.



MAIN DEALERS

326, DUNSTABLE ROAD, LUTON

Exclusive Ford Dealers and Sole Wholesale  
Distributors for South Bedfordshire

*Extensive Selection of New and Used Private  
Cars and Commercial Vehicles always in Stock*

FULLY EQUIPPED SERVICE STATION

TECALEMIT GREASING

LARGE STOCK OF GENUINE FORD PARTS

CAR WASHING :: PETROL :: OILS :: TYRES :: BODY BUILDING :: REPAIRING  
PAINTING :: CELLULOSE LACQUERING

## Football League, Division III (Southern Section)

## RESULTS AT A GLANCE

	Aldershot	Bournemouth	Brighton & H.	Bristol City	Bristol Rovers	Cardiff City	Clapton O.	Crystal P.	Exeter City	Gillingham	Luton T.	Millwall	Newport C.	Northampton	Notts County	Queens P. R.	Reading	Southend U.	Swindon T.	Torquay U.	Walsall	Watford
(11) Aldershot ...	H A	1 3	0 1	0 3	...	...	1 1	2 2	1 1	2 1	2 3	1 2	2 0	0 2	0 3	0 0	0 2	1 2	1 5	0 1	0 0	2 2
(8) Bournemouth ...	H A	1 2	1 0	1 4	3 0	0 2	1 2	2 2	0 0	0 1	0 1	2 1	0 4	0 4	1 0	3 1	2 3	1 0	5 2	3 3	3 2	3 5
(7) Brighton & Hove	H A	1 0	+	2 0	5 2	2 1	0 2	1 0	4 0	0 1	2 1	2 2	2 0	1 2	2 2	3 2	1 1	...	2 0	2 0	4 1	1 1
(13) Bristol City ...	H A	4 0	4 1	+	4 1	1 3	4 0	0 1	1 0	3 5	0 4	2 0	3 1	1 5	1 1	3 2	1 2	0 3	1 0	4 1	0 0	2 2
(17) Bristol Rovers ...	H A	4 0	0 3	3 1	1 3	5 1	1 2	0 3	4 2	0 3	0 2	2 1	1 1	1 4	2 3	1 1	1 2	1 2	1 4	0 1	3 0	0 3
(20) Cardiff City ...	H A	2 0	2 0	3 1	1 5	+	2 1	1 1	3 1	0 0	3 0	...	0 2	2 1	...	2 0	0 3	1 1	2 4	0 2	2 1	0 2
(14) Clapton Orient ...	H A	2 1	2 1	0 0	2 1	0 1	+	3 1	1 0	2 0	1 8	1 2	1 1	1 1	1 1	0 0	3 2	...	1 1	1 4	2 2	1 2
(6) Crystal Palace ...	H A	2 2	2 2	0 1	3 0	2 2	2 3	+	2 3	1 1	0 4	0 3	6 1	0 2	1 0	0 0	3 1	1 2	2 0	...	0 1	2 0
(22) Exeter City ...	H A	1 0	0 0	1 0	3 0	0 0	0 2	3 2	+	1 1	2 2	...	0 2	2 5	1 3	0 4	0 1	2 2	1 3	2 1	3 1	1 1
(16) Gillingham ...	H A	1 0	0 1	0 4	3 0	0 0	0 2	2 0	1 1	+	...	0 3	4 4	...	3 0	2 1	2 1	1 0	0 3	2 2	2 1	1 6
(2) LUTON TOWN	H A	1 0	1 0	4 0	2 0	8 1	...	5 2	2 2	...	+	2 0	1 2	1 3	2 1	1 2	4 0	1 0	...	2 2	2 0	4 1
(12) Millwall ...	H A	4 2	0 2	3 0	1 2	...	2 1	3 0	...	3 0	0 2	+	7 2	1 0	1 1	2 0	0 2	0 0	...	1 1	3 0	2 1
(21) Newport County	H A	4 0	...	0 2	1 2	2 3	1 1	1 6	2 0	4 4	2 1	2 7	+	1 3	1 3	1 2	4 4	6 2	1 1	1 1	...	1 3
(15) Northampton	H A	5 3	0 0	2 1	1 1	1 2	1 1	2 0	5 2	...	3 1	2 2	3 2	+	2 3	...	2 1	0 2	4 0	3 0	2 2	0 1
(9) Notts County	H A	3 0	0 1	2 2	1 0	3 2	1 1	0 1	3 1	1 2	2 1	1 1	3 1	3 2	+	1 2	1 0	3 2	2 2	2 2	3 3	2 1
(4) Queens Park R.	H A	0 0	1 3	2 3	5 0	...	2 1	0 0	4 0	0 1	2 1	0 1	2 1	...	0 2	+	...	7 2	1 1	3 0	2 0	0 2
(3) Reading	H A	2 0	3 2	1 1	2 1	3 0	2 3	1 3	1 0	1 2	0 4	2 0	4 4	1 2	0 1	...	+	1 1	2 2	5 1	0 2	3 0
(18) Southend United	H A	2 2	0 0	...	3 0	1 1	...	2 1	2 2	0 1	3 0	0 0	9 2	2 0	2 3	2 7	1 1	+	0 4	4 1	3 0	1 1
(19) Swindon Town	H A	5 1	3 1	1 2	4 1	4 2	1 1	0 2	3 1	0 1	2 2	...	1 1	0 4	2 2	1 1	1 2	4 0	+	2 0	3 0	1 1
(10) Torquay United...	H A	1 0	3 3	0 2	1 4	2 0	4 1	...	0 1	0 2	2 2	1 1	0 3	0 3	0 2	0 3	1 5	...	2 0	...	0 1	0 4
Walsall ...	H A	0 0	2 3	1 4	0 0	1 0	3 2	1 0	4 2	2 2	0 2	0 3	...	2 2	3 3	2 4	2 0	0 3	0 3	1 0	+	...
Watford ...	H A	5 3	4 0	1 0	3 0	2 0	2 1	0 2	1 1	6 1	1 4	2 2	3 0	1 0	1 2	2 0	0 3	1 3	2 2	4 0	...	+



## FIXTURES 1936-7

## FIRST XI Division III (Southern)

F. A.

Sat., Aug. 29	Southend United	1 2	H	1 0
Mon., " 31	Walsall	(0 0)	A	1 0
Sat., Sept. 5	Cardiff City	3 2	A	0 3
Mon., " 7	Walsall	(1 1)	H	2 0
Sat., " 12	Crystal Palace	6 0	H	5 2
Wed., " 16	Torquay United	1 2	A	2 2
Sat., " 19	Exeter City	2 1	A	4 2
Sat., " 26	Reading	2 1	H	4 0
Wed., " 30	Bournemouth (S. Section Cup)	H	3 1	
Sat., Oct. 3	Queens Park Rangers	0 0	A	1 2
Sat., " 10	Bristol City	1 0	H	4 0
Sat., " 17	Watford	2 1	H	4 1
Sat., " 24	Brighton & Hove A.	1 1	A	1 2
Wed., " 28	Aldershot (S. Section Cup)	H	1 0	
Sat., " 31	Bournemouth	0 0	A	1 0
Sat., Nov. 7	Northampton Town	0 0	A	1 3
Wed., " 11	Notts County (S. Section Cup)	H	2 4	
Sat., " 14	Bristol Rovers	12 0	H	2 0
Sat., " 21	Millwall	0 0	A	2 0
Sat., " 28	Scottish Central League	H	1 1	
Sat., Dec. 5	Aldershot	1 0	A	3 2
Sat., " 12	Corinthians	H	6 3	
Sat., " 19	Newport County	2 0	A	1 2
Fri., " 25	Notts County	1 0	H	2 1
Sat., " 26	Southend United	1 0	A	0 3
Mon., " 28	Notts County	3 0	A	1 2
Sat., Jan. 2	Cardiff City	2 2	H	8 1
Sat., " 9	Crystal Palace	1 5	A	4 0
Sat., " 16	Blackpool (F.A. Cup)	H	3 3	
Wed., " 20	Blackpool (F.A. Cup Replay)	A	2 1	
Sat., " 23	Exeter City	3 1	H	2 2
Sat., " 30	Sunderland (F.A. Cup)	H	2 2	
Wed., Feb. 3	Sunderland (F.A. Cup Replay)	A	1 3	
Sat., " 6	Queens Park Rangers	2 0	H	
Wed., " 10	Reading	1 2	A	
Sat., " 13	Bristol City	2 1	A	
Sat., " 20	Watford	3 1	A	
Sat., " 27	Brighton & Hove A.	2 1	H	
Sat., Mar. 6	Bournemouth	1 2	A	
Sat., " 13	Northampton	3 3	H	
Sat., " 20	Bristol Rovers	2 2	A	
Fri., " 26	Clapton Orient	0 3	A	
Sat., " 27	Millwall	0 0	H	
Mon., " 29	Clapton Orient	5 3	H	
Sat., April 3	Swindon Town	0 3	A	
Wed., " 7	Gillingham	1 2	H	
Sat., " 10	Aldershot	2 2	H	
Sat., " 17	Gillingham	1 0	A	
Sat., " 24	Newport County	7 0	H	
Sat., May 1	Torquay United	1 0	H	

## RESERVE FIXTURES London Combination F. A.

Sat., Aug. 29	Reading	2 7	A	1 1
Mon., " 31	Southend United	2 2	H	5 1
Sat., Sept. 5	Portsmouth	2 2	H	1 1
Wed., " 9	Southend United	3 0	A	1 1
Sat., " 12	Charlton Athletic	3 4	A	0 3
Sat., " 19	Tottenham Hotspur	3 0	H	3 2
Mon., " 21	Leicester City	6 1	H	1 2
Sat., " 26	Chelsea	1 3	A	1 2
Sat., Oct. 3	Queens Park Rangers	1 1	H	4 0
Wed., " 7	Crystal Palace	1 2	A	1 2
Sat., " 10	Bristol City	2 2	A	1 1
Sat., " 17	Swansea Town	2 3	A	1 0
Sat., " 24	Southampton	4 3	H	3 1
Mon., " 26	Leicester City	1 0	A	1 2
Sat., " 31	Brentford	3 4	A	0 3
Sat., Nov. 7	Fulham	2 2	H	4 0
Sat., " 14	Arsenal	2 0	A	0 10
Sat., " 21	Millwall	3 4	H	5 3
Sat., " 28	Coventry City	1 3	A	1 2
Sat., Dec. 5	Northampton Town	7 2	H	3 4
Sat., " 12	Bournemouth	4 1	A	1 3
Sat., " 19	Brighton & Hove A.	7 0	H	1 2
Fri., " 25	Clapton Orient	1 5	A	0 1
Sat., " 26	Reading	3 2	H	6 2
Mon., " 28	Clapton Orient	6 0	H	0 1
Sat., Jan. 2	Portsmouth	0 5	A	0 3
Sat., " 9	Charlton Athletic	1 3	H	1 1
Sat., " 16	Tottenham Hotspur	3 9	A	1 5
Sat., " 23	Tottenham Hotspur	3 9	A	1 5
Mon., Feb. 1	Chelsea	0 1	H	3 2
Sat., " 6	Queens Park Rangers	0 1	A	
Sat., " 13	Bristol City	6 2	H	
Sat., " 20	Swansea Town	3 1	H	
Sat., " 27	Southampton	3 2	A	
Sat., Mar. 6	Brentford	4 1	H	
Sat., " 13	Fulham	0 10	A	
Sat., " 20	Arsenal	3 2	H	
Fri., " 26	West Ham	5 2	H	
Sat., " 27	Millwall	1 4	A	
Mon., " 29	West Ham	1 6	A	
Sat., April 3	Coventry City	5 0	H	
Sat., " 10	Northampton Town	1 2	A	
Wed., " 14	Crystal Palace	5 0	H	
Sat., " 17	Bournemouth	1 1	H	
Wed., " 21	Watford	3 1	A	
Sat., " 24	Brighton & Hove A.	1 0	A	
Wed., " 28	Watford	4 3	H	

## LEAGUE TABLES

## LEAGUE III (Southern)

	Pld.	Won	Lost	Drn.	For	Agst.	P.
Brighton & Hove A.	27	16	7	4	48	27	36
Notts County	27	14	6	7	48	37	35
LUTON TOWN	24	15	7	2	56	30	32
Watford	27	12	7	8	53	36	32
Gillingham	26	13	7	6	36	34	32
Millwall	25	12	7	6	44	29	30
Northampton	25	13	8	4	51	36	30
Southend United	26	11	8	7	48	39	29
Bournemouth	26	12	9	5	37	37	29
Queens Park Rangers	26	11	9	6	44	30	28
Reading	24	11	7	6	45	35	28
Clapton Orient	26	8	8	10	33	35	26
Swindon Town	26	9	10	7	46	40	25
Bristol City	27	10	13	4	42	50	24
Crystal Palace	27	8	12	7	38	41	23
Cardiff City	25	9	11	5	33	44	23
Torquay United	27	8	12	7	36	47	23
Bristol Rovers	26	10	14	2	40	49	22
Walsall	25	6	12	7	29	49	19
Newport County	26	5	14	7	42	68	17
Exeter City	26	5	15	6	31	57	16
Aldershot	26	2	17	7	27	57	11

## LONDON COMBINATION

	Pld.	Won	Lost	Drn.	For	Agst.	P.
Arsenal	31	23	6	2	113	26	48
West Ham United	28	19	5	4	86	34	42
Charlton Athletic	30	16	6	8	63	31	40
Brentford	30	16	9	5	57	35	37
Coventry City	29	16	9	4	75	44	36
Portsmouth	28	14	7	7	58	31	35
Fulham	30	14	10	6	60	47	34
Chelsea	29	15	10	4	70	61	34
Crystal Palace	29	12	7	10	49	45	34
Tottenham Hotspur	29	12	11	6	76	56	30
Northampton	31	12	13	6	61	73	30
Watford	29	12	13	4	58	61	28
Brighton & Hove A.	28	10	12	6	39	55	26
Southend United	29	11	15	3	60	76	25
Bournemouth	28	10	13	5	32	61	25
Queens Park Rangers	28	11	15	2	38	47	24
Swansea Town	31	8	15	8	40	59	24
LUTON TOWN	29	9	15	5	50	61	23
Bristol City	30	9	16	5	38	63	23
Reading	27	9	14	4	43	70	22
Millwall	30	9	17	4	45	77	22
Leicester City	29	9	17	3	32	57	21
Southampton	29	7	17	5	44	70	19
Clapton O.	29	7	18	4	27	73	18

## NEWBOLD &amp; MARTELL

TELEPHONE

896

Coal and Coke Merchants

ESTABLISHED

1879

24, UPPER GEORGE STREET, LUTON

BURN

"Hucknall" Ashless Coal  
It Scores Every Time!

Popular Price! Saves Labour!! Great Heat!!!

Why Not Try It?

THE PIPE THAT  
CHEERS!

SWEET

ROSEMARY

TOBACCO

ONLY  
8<sup>d</sup>  
PER OZ

HOORAY!!!

for  
PRINTING  
that SATISFIES  
both for  
PRICE and QUALITY

E. A. ALLEN

424, Dunstable Road, Luton

TELEPHONE 1626



10 If your bicycle is hard work,  
it's out-of-date . . . the modern  
Raleigh has made cycling easy! 12

C  
H  
A  
P  
E  
L  
  
S  
T  
R  
E  
E  
T



#### FIFTY YEARS' PROGRESS

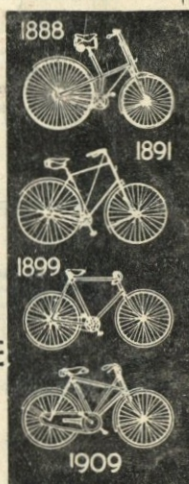
Here are illustrated some of the machines of the past and in contrast is the finest bicycle of to-day—the Raleigh. Throughout all these years Raleigh have been first with every cycling improvement.

Don't blame cycling if it tires you. Blame your bicycle. If it makes hard work then it's old-fashioned—even if it's new. So change to a Raleigh. For a Raleigh is designed—from the position of the saddle to the free-running bearings—to make cycling easy. The whole secret of its easier-running and modern design is that skilled engineers are constantly working to improve the Raleigh—and every part is made in the Raleigh factory. Get the best in cycling—Get a Raleigh.

GUARANTEED FOR EVER

# RALEIGH

THE ALL-STEEL BICYCLE



**FROM £4:19:6**  
**Cash or 10-**  
monthly (no deposit)  
fitted with Dunlop  
tyres, Brooks' saddle  
and the best of every-  
thing. Specify the  
Sturmev-Archer  
3-speed gear, 20-  
extra. Send post-  
card for free copy of  
"The Book of the  
Raleigh" and name  
and address of near-  
est dealer.

# H. G. PARTRIDGE & CO.

Printed by E. A. Allen, 424, Dunstable Road, Luton. 'Phone 1626.  
Published by The Luton Town Football and Athletic Co., Ltd., Kenilworth Road, Luton.