



THE
LUTON TOWN FOOTBALL
AND ATHLETIC CO
LTD.

OFFICIAL
JOURNAL

PRICE
TWO PENCE



League III (Southern)

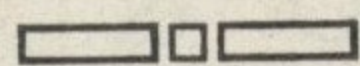
September 7th, 1935.

LUTON TOWN v. SOUTHEND UNITED

“TRUE-FORM”
THE FINEST FOOTWEAR
IN THE TOWN



BUY DIRECT FROM THE MAKERS



LOCAL BRANCH:

44, GEORGE STREET.

Head Office and Factories: NORTHAMPTON.



For that 'BOND STREET' look
 . . . obtain your clothes from John Bright

The cloth, fit, style and workmanship will be irreproachable, whilst we are renowned for our extremely competitive prices. Pay us a visit and give our claims the fullest examination. We shall be very pleased to allow you to inspect the quality of our work at your leisure WITHOUT ANY OBLIGATION.

OVERCOATS from 2 gns
SUITS from 57/6

JOHN BRIGHT

OUTFITTERS LIMITED

36 George Street - Luton

Alma Works, Lancrerts Path
 Alma Street, LUTON
 BEDS.



Telephone
 Luton — 571

WOOD & METAL BLOCKMAKERS

HAT
MANUFACTURERS

KICK OFF WITH A TRIAL WITH US

*All Blocks and Pans made on Own
 Premises by Highly Skilled Men
 with Long Standing Experience*

Luton
Football and



Town
Athletic Co.,

LIMITED

Telephone No. 1560.

President: Alderman Harry Arnold, C.A., J.P.

Directors:

Chairman: Councillor Chas. Jeyes, C.C.
 Messrs Edward Mouse (Vice-Chairman), Frank J. Andrews, Stanley H. Godfrey, C.C.,
 Horace S. Hewson, Percival G. Mitchell, C.C., E. Hugh Woods, Philip W. Wright.

Secretary-Manager: Mr. Harold Wightman.

Assistant Secretary: Mr. A. E. Wickson.

Honorary Medical Officer: E. J. Crarer, M.B., Ch.B.

After playing two matches away we at last begin our home campaign and for our opening fixture have as our opponents, old friends and rivals in Southend United. Curiously enough it was against the "Shrimpers" that we began the 1934/5 season when after a stirring struggle a draw of one goal each resulted. The "Seasiders" however, did not live up to their early promise and fell badly away, with the result that at the season's end they could only muster 31 points and were forced to seek re-election.

During the summer months however, the Southend management has endeavoured to greatly strengthen their team, and so make a bold bid for championship honours. With this end in view no stone has been left unturned to obtain the right man for the required position, and accordingly the signatures of the following players have been obtained. To understudy the veteran Moore, has been signed D. McKenzie who previously had donned the Plymouth Argyle sweater, whilst in addition to the full backs, Robinson, Kelly and Holborn, have been added V. Corbett, ex Manchester City and Torquay United, and J. Nelson, late of Newcastle United. Jackson, Morfitt, Smith, Donovan, Gulliver and Carr were the retained half backs to which line J. Spelman and C. Turner, both from Leeds United, are additions. Among the forwards newcomers to their ranks are

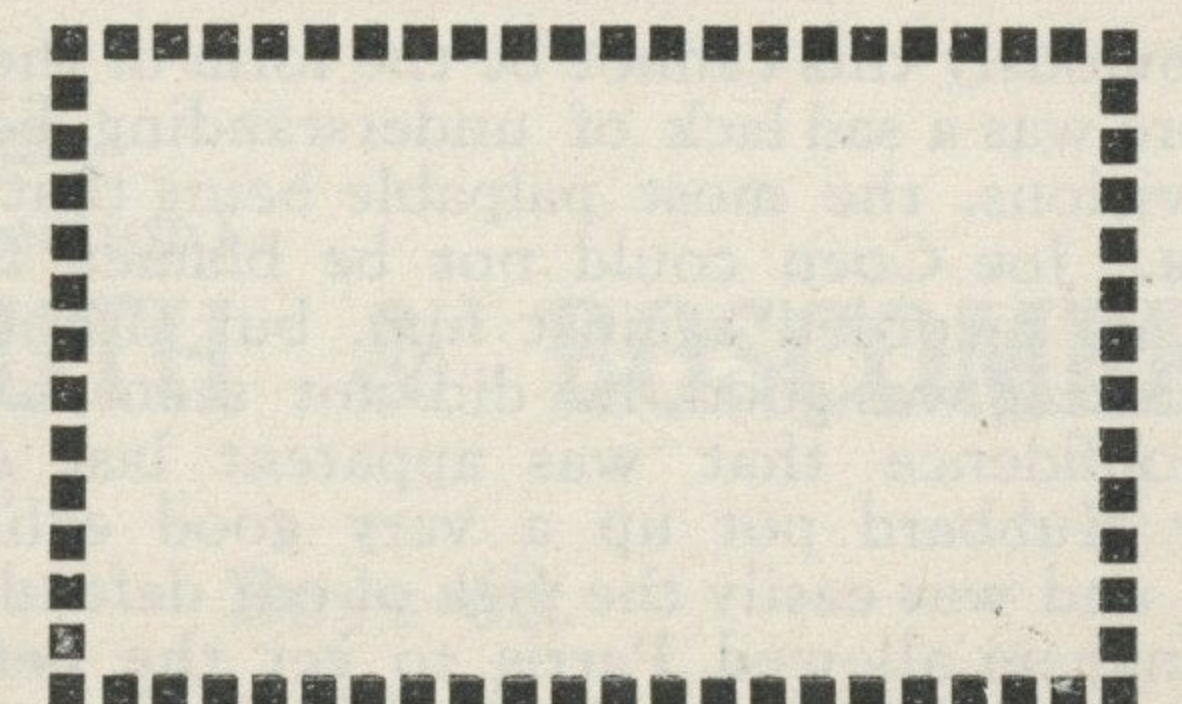
J. Demellweek from Plymouth Argyle, J. Firth from Leeds United, and C. Pearson from Birmingham, these in addition to Stevens, Cheesmur, Johnson, Jones, Oswald, Clark Deacon, Lane and Busby who were with the Club last season.

Southend have made a very auspicious commencement and on Wednesday last trounced Crystal Palace to the tune of seven goals to one whilst the previous Saturday drew three all with Bournemouth, our mid-week victors.

For some seasons past now our ground has always been a happy hunting place for the seaside club. What therefore will today bring forth?

We are presenting at each match, to two holders of programmes, a ticket which will enable them to obtain free admission to the Grand Stand at the following match (Cup Ties and Special Matches excepted) that is to be played on this ground.

A board will be taken round the ground during the interval intimating the numbers that have been selected, and holders, who have in their possession programmes bearing these numbers, are requested to make personal application at the office of the Club immediately after the termination of the match, in order to claim these tickets.



ATTENDANCE BAROMETER

1934		1935		1934				1935							
						£	s.	d.			£	s.	d.		
Aug.	25			Southend United	12255	570	13	4					
Aug.	27			Tottenham Hotspur Reserves	3371	87	12	11					
Sept.	1			Southend United Reserves	4088	106	15	11					
Sept.	3	Aug.	31	Watford Reserves	9392	423	11	2	6034	159	17	3	
		Sept.	2	Cardiff City	3639	92	3	6
				Bournemouth Reserves									
							<u>29106</u>	<u>1188</u>	<u>13</u>	<u>4</u>	<u>9673</u>	<u>252</u>	<u>0</u>	<u>9</u>	

CLUB NOTES by "Hatter"

Further disappointment was our lot on Wednesday evening last when, following on our defeat by Clapton Orient, we had a second reverse, this time at the hands of Bournemouth & Boscombe United. Our only consolation this time is that there was only one goal margin in the defeat. So our hopes of two opening away victories have been dashed.

The game at Bournemouth started with both teams striving for an early goal and consequently the exchanges were keen and interesting. Gradually, thanks to Jack Smith, the ex-Pompey star, and Parris, the dusky winger, the "Cherries" gained the ascendancy and after twenty-five minutes play, following several heading bouts around the penalty spot, Riley secured and beat Coen from close quarters. On the restart Stephenson made tracks for the Bournemouth goal and, following a badly placed corner kick, the "Cherries" broke away on the right and Nelson handled, within the fateful eighteen yards area, a centre from the winger. Fortunately the place kick rebounded from the cross bar and was eventually cleared. Five minutes later, however, following another attack by our forwards, the Bournemouth right wing again broke away and this time it was Reg Kingham who handled the ball, but this time just outside the penalty area. The players lined up and put a barrage in front of the goal, but Riley's shot rebounded from the legs of a defender and was diverted into the opposite corner to that, to which Coen dived. Four minutes from the interval good work by Stephenson ended in a fine centre. Mellors came out to clear the ball, but Beresford's jump caused the goalkeeper to be out of his reckoning and consequently both missed the ball, which fortunately landed at the feet of Crompton, who had closed in, and he had no difficulty in putting it in the net.

Following the change of ends we attacked with vigour, but several promising movements were negatives by the slowness of the inside forwards and three good scoring chances, at least, were woefully misplaced by the same miscreants. We had at least seventy per cent of the game this half but the end came with no alteration to the score sheet.

Obviously this cannot be the form of the team, for there was a sad lack of understanding between the divisions, the most palpable being that of the defence. Joe Coen could not be blamed for the two goals recorded against him, but although his place kicking was good, he did not seem to show that confidence that was apparent last season. Arthur Hubbard put up a very good exhibition indeed and was easily the pick of our defenders for Reg Kingham allowed Parris to get the better of

him too frequently. The wing half backs did too much attacking, especially in the first half, and consequently a Bournemouth breakaway found them right out of position. The inside forwards, although showing much cleverness, were apt to overstep the mark, the short passing being very much overdone. If more use had been made of the extreme wingers, Stephenson and Crompton, goals must have come for they were always a thorn in the flesh of the Bournemouth defenders whenever they did get the ball.

The "Stiffs" match with their confreres from Bournemouth on Monday evening was a thrilling affair, a highly exciting game ending in a draw of one goal each, thanks to George Turner's successful last minute effort. Play during the first half was more or less even, if anything we had slightly the better of the exchanges, and if Dame Fortune had smiled sweetly upon us might easily have been leading by three goals although Bournemouth were unfortunate when a header from Burgin just missed the post after McIntosh had left his charge. Anyhow the interval arrived with the score sheet blank. The commencement, after the resumption, was a repetition of the first half, the ball travelling from end to end with amazing rapidity. After about a quarter of an hour's play a movement on the Bournemouth right produced an accurate centre and Adkins, meeting the ball first time, gave the "Cherries" the lead. After this it was all Luton. Time after time attacks were launched but over eagerness on the part of the Bournemouth rearguard resulted in no equaliser. With barely a minute to go, George Turner received the ball and, after beating his namesake, hit the ball first time and a brilliant cross shot right along the ground found its billet just inside the far post as Gold had made up his mind to go down for it. Never have I heard so much cheering as that which greeted this effort, even the boys and girls who were playing on the "Scotch Colony Bank," left their caprices and helped to swell the vociferation.

IMPORTANT.

Supporters are asked to note that the kick off on Monday evening has been altered to 6.15 p.m. and not 6.30 p.m. as advertised.

Programme Winning Number

Monday, September 1st, 1935.

23 Not Claimed
109 Mr. J. McGrath,
22, Willow Road, Luton.

OUR VISITORS TODAY

- W. Moore (goalkeeper) Born at Sunderland and brought out by Seaham Colliery. Was then snapped up by Leeds United and then by Southend. Has been with the Essex Club now for 10 seasons.
- J. Nelson (right full back) A Scotchman by birth but educated in Ireland, and made his football name through the medium of the Welsh Club, Cardiff City. Transferred to Newcastle in 1930 and is the possessor of a Cup Medal. Scottish International.
- D. Robinson (left full back) Another old servant of the "Shrimpers." Had a very serious injury three seasons ago which took some time to overcome. Is now as good as ever.
- I. Spelman (right half back) A recruit who last season was wearing the colours of Leeds United. Regarded as quite a capture.
- C. J. Turner (centre half back) A compere of Spelman last season at Leeds United. A six footer and still quite young.
- J. W. Demellweek (outside right) Another recruit secured from Plymouth Argyle—managed by Bob Jack, the father of the Southend Manager. Previous to turning "pro" was an

amateur for two seasons with the Devonshire Club

- H. Firth (inside right) A third player who was on Leeds United's books last season. Is regarded as a great capture.
- L. Stevens (centre forward) Was brought out by New Brighton for whom he was top goalscorer for two seasons. Transferred to Everton in 1932/3, but a season later joined Southend.
- H. Lane (inside left) Came to Southend two seasons ago from Birmingham as an exteme winger. Previously was with Hednesford Town.
- R. R. Oswald (outside left) In his second season with the club after having seen service with Sheffield United and Reading.

The Editor will always be pleased to receive communications from Supporters for insertion in the Programme. Should a correspondent wish to use a nom-de-plume, however, his name and address must always accompany the letter although it will not be divulged. All communications should be addressed:—

The Programme Editor,
Luton Town Football Club,
84, Kenilworth Road,
Luton.

PLAYERS' APPEARANCES

	League III		London Combination		F.A. Cup		Friendly		Total	
	App.	Goals	App.	Goals	App.	Goals	App.	Goals	App.	Goals
Andrews, H.	2	...
Ball, J. T.	...	2	2	...
Beresford, F. E.	...	2	2	...
Coen, J. L.	...	2	2	...
Colquhoun, D. W.	...	2	2	...
Cook, C.	1	2	1	2
Coote, S. A.
Crompton, W.	...	2	1	2	1
Crook, M. S.	2	2	...
Fellowes, W. J.	2	2	...
Finlayson, J.	2	2	...
Fraser, C. R.	2	...
Hubbard, A.	...	1	1	2	...
Kidd, G. I.	...	2	2	...
Kingham, H. R.	...	2	2	...
McGinnigle, H.	2	2	...
McIntosh, C. K.	2	2	...
Mackey, T. S.	...	1	1	...
Martin, G. S.	2	1	2	1
Nelson, J.	...	2	2	...
Payne, J.	2	2	...
Roberts, F.	...	2	2	...
Smith, T. S.	1	1	...
Stephenson, G. H.	...	2	2	...
Taylor, J. T.	1	1	...
Thayne, W.
Turner, G. W.	2	2	2	2

Next Match, Monday, September 9th.

LEAGUE III (Southern Section)

LUTON TOWN v. BOURNEMOUTH & BOSCOMBE

KICK-OFF 6.15 p.m.

ADMISSION Ground 1/- Boys 6d.
Stand and Enclosure 2/- Boys 1/- Centre Bay 1/- extra
ALL PRICES INCLUDE ENTERTAINMENT TAX

ESTABLISHED 1879
TELEPHONES 2003-4

SELL & MITCHELL

Auctioneers, Land & Estate Agents
Surveyors & Valuers

7-9 PRINCESS STREET, LUTON

ALSO

95 HIGH STREET NORTH, DUNSTABLE

Telephone 354

○○○○○○○○

District Agents for

Woolwich Equitable Building Society

The most
comprehensive register
of all available
properties at present
for sale in the district

Rents Collected

Auction Sales
conducted

TELEPHONE
1375 LUTON

E. H. SMITH

Complete
House Furnisher
CABINET MAKER
UPHOLSTERER
BEDDING MAKER

Removals a Speciality

42 Leagrave Road
LUTON

To-Day's Half-Time Scores FIRST LIST

A	Aldershot v. Brighton & Hove
B	Bournemouth v. Northampton
C	Bristol City v. Bristol Rovers
D	Cardiff City v. Reading
E	Coventry City v. Newport C.
F	Gillingham v. Crystal Palace
G	Millwall v. Watford
H	Notts County v. Clapton Orient
K	Swindon Town v. Exeter City
L	Torquay U. v. Queens Park R.
M	Chesterfield v. New Brighton
N	Southport v. Lincoln City

NOTE—The Letter in the Programme corresponds with the letter on the Board—thus A 0-1 means that the first-named Club has scored 0 and their opponents 1.

MONO  BRAND
REGD.

SPECIALITIES

Paint and Enamel
Manufacturers
"Stuart" Series
Wallpapers

**OGDEN &
CLEAVER**

Stuart Street, LUTON

TELEPHONE 580

Telephone :: Luton 1752

ALMA G. PECK

Builder and Contractor

WHEN wanting a house in Luton or district,
either to purchase or rent, pay me a visit

5 and 7 WENLOCK STREET :: :: LUTON

BLUNDELL Bros. (LUTON) LTD.

Phone 1110

MARKET HILL, LUTON

The Complete Furniture Store

If you require FURNITURE CARPETS CURTAINS
BEDDING CHINA HARDWARE
KITCHEN UTENSILS ETC.

call and inspect the largest selection in the district

REMOVAL ESTIMATES FREE

To-Day's Half-Time Scores SECOND LIST

A	Birmingham v. Arsenal
B	Brentford v. Huddersfield T.
C	Derby County v. Bolton W.
D	Grimsby Town v. Chelsea
E	Leeds U. v. Blackburn R.
F	Liverpool v. Everton
G	Portsmouth v. Aston Villa
H	Preston N. E. v. Middlesbrough
K	Sheffield W. v. Wolverhampton
L	Sunderland v. Manchester C.
M	West Brom. A. v. Stoke City
N	Stockport County v. Barrow

RESERVED
for
**H. INWOOD
LTD.**

RESERVED
for
**H. INWOOD
LTD.**

LUTON AND MIDLANDS BUILDING SOCIETY

Head Office—
11 George Street West
Luton

Telephone—
Luton 1067

Interest on Investment Shares

$3\frac{10}{2}\%$
TAX FREE

Interest on Advances

$4\frac{10}{2}\%$

For particulars apply to Secretary
P. F. KEENS, F.S.A.A.

TELEPHONE
LUTON 1626

E. A. ALLEN

FOR
PRINTING
OF
QUALITY

424 Dunstable Road
LUTON

WEAR A
"FANGUARD"
RUBBERLESS RAINCOAT

Lined check, with waterproof interlining. Specially made to keep Match-goers warm and dry in any weather

S.B. Belted - 37/6

D.B. Belted - 39/6

Charles Mares Ltd.

65-67 George Street

187 Dunstable Road, LUTON

G. A. WILD & SONS
Saddlers & Sports
Outfitters

14 Manchester Street
LUTON, Beds.

Phone 780
ALSO AT
103 High Street North
DUNSTABLE, Beds.

The Noted Shops for all kinds of Sports Goods Requisites. Footballs, Jerseys, Knickers, Hose, Shin Guards, Etc.

Agents for
Manfield Hotspur
Football Boots

Luton Town F.C.'s complete new outfit supplied by us
Special Discount given to Clubs

PALACE THEATRE - LUTON

TO-DAY

TO-DAY

KATHERINE HEPBURN
and All Star Cast

IN

"The Little Minister"

NEXT WEEK

NEXT WEEK

Bing Crosby

W. C. FIELDS "MISSISSIPPI"

(U)

LUTON TOWN (White Shirts and Cuffs,

2 Finlayson
Right Back
4 Payne
Right Half
7 Crompton
Outside Right
8 Andrews
Inside Right
Referee:
Capt. G. Hamilton Jones
(Woolwich)
12 Oswald
Outside Left
13 Lane
Inside Left
17 Carr
Left Half
20 Robinson
Left Back

SOUTHEND U. (Blue Shirts and Cuffs,

Black Collars and Knickers)

League III (Southern)

3 Hubbard
Left Back
6 Kidd
Left Half

10 Roberts
Inside Left
11 Stephenson
Outside Left

Linesmen:
Blue Flag: C. T. Challis (Edmonton)
Red Flag: W. E. Ross Gower (Plumstead)

15 Firth
Inside Right
16 Demelweek
Outside Right

19 Spelman
Right Half
21 Nelson
Right Back

Kick-Off 3.15 p.m.

Luton's Brew—
First Prize, too
J. W. GREEN'S
beer is best

J. W. GREEN LTD. - THE BREWERY, LUTON

Telephone - Luton 1454

Booking
Hours
10 to 4 p.m.
Phone 141

GRAND
THEATRE
LUTON

Saturdays
10 to
8.30 p.m.

Week commencing September 9th
Twice Nightly at 6.45 and 9 p.m.

The Enormously
Successful Modern Comedy
The Wind and the Rain
by Merton Hodge.

Now nearing its third year and still playing to capacity at the Queen's Theatre, London.

No increase in prices—Free list
entirely suspended—Book now
Special Matinee on Saturday at 2.30 p.m.

May the Luton Team
get "First Place"

BIRDS

are already there for all

BUILDING
AND DECORATIVE
MATERIALS

CHARLES BIRD & SONS, Limited
Collingdon Street, LUTON

Telephone 1255

Also
Corrugated Iron, Wire Netting,
Chain Link Fencing, Chestnut
Paling, Creosote and Garden
Sundries

W. Chamberlain & Co.
Proprietors—
A. M. Chamberlain
R. Deadman
106 Dunstable Road
LUTON

Best British Made
Brushes & Brooms
Enamel Ware

City of London
White Lead Paint
Messrs Merrediths & Co.
MERLAC

Enamel Paints

Fadeless Wall Paper
Ask for Pattern Books

A Trial Solicited

Engineers to the Hat Trade
for nearly 50 years

JANES BROS.
LIMITED

ADVICE AND
DEMONSTRATIONS
GLADLY GIVEN

38 High Town Road

Phone 242

LUTON

WINE AND SPIRITS

R. H. Marks Ltd.

69 George Street
and at 81 High Town Road

Luton

AGENTS FOR

MANN, CROSSMAN & PAULIN LTD.
BEERS and STOUTS

ALMA LUTON

Week commencing Monday, September 9th, for six days
(Programme Starts 12-25 p.m.)

THE ALMA'S GREATER FILM SEASON

DICK POWELL

RUBY KEELER PAT O'BRIEN

IN

"FLIRTATION WALK"

ALSO

(U)

NORMA SHEARER, LIONEL BARRYMORE and CLARK GABLE in

"A FREE SOUL" (A)

SPEND SUNDAYS WITH THE STARS AT THE ALMA
Watch Bills for Special Announcements of Super Programmes
BOOK NOW!

WEBDALE'S
of WELLINGTON STREET

FOR

Kitchen Equipment

AND ALL

Household Requirements

at Lowest Prices

21 to 27 WELLINGTON STREET

'Phone: Luton 41

LUTON

**CHARNLEY and
Registered SONS
Opticians**

TO THE
National Health
Insurance
AND
Hospital Saving
Association

11 WELLINGTON ST.
LUTON 'Phone 1808

*The
Nearest*
**CHEMIST
PRATT**

The Post Office
169 Dunstable Rd.
LUTON

E. A. GREEN
Bookseller
Newsagent
Stationer

Luton's Most
Progressive Circulating
Library

21a New Bedford Rd.
and 228 Biscot Road
LUTON 'Phone 476

**HUBERT
SPARY**

Haulage
Contractor

LARGE CONTRACTS
UNDERTAKEN

Holland Garage
Holland Road
LUTON, Beds.

TELEPHONE
LUTON 354

To-Day's Half-Time Scores
THIRD LIST

A	Bradford v. Sheffield U.
B	Burnley v. Hull City
C	Bury v. Blackpool
D	Doncaster R. v. Charlton A.
E	Fulham v. Barnsley
F	Leicester C. v. Southampton
G	Manchester U. v. Bradford C.
H	Port Vale v. Plymouth Argyle
K	Swansea Town v. Norwich C.
L	Tottenham H. v. Newcastle U.
M	West Ham U. v. Notts Forest
N	Wrexham v. Chester

WIN, LOSE or DRAW
don't forget to call on

S. TRIPP

10 Dunstable Road
(Main road from town to
football ground)

for your

**CIGARETTES . . .
TOBACCO . . .
CONFECTIONERY
NEWSPAPERS .**

ALSO

A chat about our team's per-
formances and prospects with
a supporter for 16 seasons.

A SUGGESTION

A few moments will suffice
to pay a small amount each
Saturday into our Xmas
Club. Start Early!

PHONE 840

W. HOLES

3 Gordon Street Luton

Coal and
Coke Merchant

Authorised Agent for
Luton Gas Company's
large and graded coke

Agent for
L.M.S. Passenger Dept.

Telephone 210

P. W. SMITH

Builder :: Contractor

High Class Decorator



418 DUNSTABLE ROAD

'PHONE LUTON 2126

BOBBERS STAND CLUB

It is to the advantage
of every Supporter to
become a Member of
the

**BOBBERS STAND
CLUB**

During the past week the membership
of the club has again increased and if this
is a forecast of what we have to expect in
future, we shall soon be well over the 2,000
mark.

On Saturday next we are running a
number of saloon motor coaches to
Northampton, the occasion of our Derby
match with the Cobblers. As these,
however, are limited, will all members who
are desirous of making the trip kindly give
their names to the Steward or any member
of the Committee as early as possible.

On Friday evening next with the desire
to get as many of our members on fraternal
relationship we are organising a hot supper.
All those who have already tasted the
Steward's preparations can give assurance
of the fare that he supplies so there should
be a good attendance. The charge is
merely nominal at 1/- per head, and at 8.15
serviettes will be unfurled.

White Rose Catering Co.
(LUTON) LTD.

**HALF
TIME**

time

for a

HOT

CUP OF TEA

Obtainable under Stands

MAPLE ROAD and
IVY ROAD ENTRANCES

the easiest way
to get running
hot water . . .

GAS

See the new
gas water heaters at the

SHOWROOM
72 GEORGE STREET
LUTON GAS COMPANY

FOR

- WELL BUILT AND RELIABLE HOUSES
- BEST CLASS DECORATIONS
- PERSONAL ATTENTION GIVEN TO ALL CLASS OF REPAIRS
- THE BEST BUILDING SITES IN LUTON

CONSULT

CHARLES JEYES Ltd.

The Luton Builders

17a Windsor Street, Luton

TELEPHONE
594

A SMART SHAPE

DESERVES

A SMART BLOCK

SO TRY

W. ROBINSON & Co.

15 JOHN STREET

Phone 1086

WOOD BLOCKS
ALUMINIUM PANS
ETC. ETC.

SERVICE

Cash or Terms from 2/6 Weekly

PROMPT SERVICE

PYE H.M.V. EKO
BUSH PHILCO
MARCONI COSSOR
FERRANTI PHILIPS

OUR 1935/6 RADIO TEAM

171 Dunstable Road, LUTON
24 Mill Street and

SNOWDEN
A.T.

FROM

You will get the best by
purchasing your Radio Receiver

RESULTS

Football League, Division III (Southern Section)

RESULTS AT A GLANCE

<div>VISITING CLUB</div> <div>HOME CLUB</div>		Aldershot	Bournemouth	Brighton & Hove	Bristol City	Bristol Rovers	Cardiff City	Clapton Orient	Coventry City	Crystal Palace	Exeter City	Gillingham	LUTON TOWN	Millwall	Newport County	Northampton	Notts County	Queens Park R.	Reading	Southeast United	Swindon Town	Torquay United	Watford
(18)	...	x	x	x	x	x	x	x	x	x	x	x	2 1		1 2	2 1	0 0	1 1	1 0			3 2	
(17)	...												3 0										1 3
(9)	Brighton & Hove																						
(15)	Bristol City																						
(8)	Bristol Rovers																						
(19)	Cardiff City																						
(14)	Clapton Orient																						
(3)	Coventry City																						
(5)	Crystal Palace																						
(12)	Exeter City	5 1																					
(20)	Gillingham																						
(4)	LUTON TOWN												x										
(11)	Millwall													x									
(22)	Newport County								2 2						x						2 2		
(7)	Northampton															x							
...	Notts County																x						
(13)	Queens Park R.																	x					
(2)	Reading																		x				
(21)	Southeast United																						
(16)	Swindon T.																						
(10)	Torquay United																						
(6)	Watford																						

For Home Match Results read across

For Away Match Results read downwards

FIXTURES 1935-6

FIRST XI Division III (Southern)

					F. A.
Sat., Aug. 31	Clapton Orient	...	1	1	A 0 3
Wed., Sept. 4	Bournemouth	...	3	1	A 1 2
Sat., " 7	Southend United	...	1	1	H
Mon., " 9	Bournemouth	...	4	0	H
Sat., " 14	Northampton Town	...	1	2	A
Mon., " 16	Queens Park Rangers	...	1	1	H
Sat., " 21	Crystal Palace	...	2	2	H
Wed., " 25	Swindon (Southern Section Cup)	...	2	2	A
Sat., " 28	Reading	...	0	1	A
Sat., Oct. 5	Cardiff City	...	4	0	H
Sat., " 12	Gillingham	...	1	1	A
Sat., " 19	Brighton & Hove A.	...	4	0	H
Sat., " 26	Exeter City	...	2	1	A
Sat., Nov. 2	Newport County	...	4	1	H
Sat., " 9	Watford	...	2	2	A
Sat., " 16	Swindon Town	...	2	0	H
Sat., " 23	Aldershot	...	1	0	A
Sat., " 30					
Sat., Dec. 7	Millwall	...	4	1	A
Sat., " 14	Bristol City	...	1	1	H
Sat., " 21	Coventry City	...	0	1	A
Wed., " 25	Notts County	...	(2 4)		
Thurs., " 26	Notts C.	...	(1 2)		H
Sat., " 28	Clapton Orient	...	3	0	H
Sat., Jan. 4	Southend United	...	3	3	A
Sat., " 11	Torquay United	...	3	1	H
Sat., " 18	Northampton	...	2	2	H
Sat., " 25	Crystal Palace	...	1	2	A
Sat., Feb. 1	Reading	...	2	4	H
Sat., " 8	Cardiff City	...	0	1	A
Sat., " 15	Gillingham	...	2	2	H
Sat., " 22	Brighton & Hove A.	...	1	4	A
Sat., " 29	Exeter City	...	4	0	H
Sat., Mar. 7	Newport County	...	4	2	A
Sat., " 14	Watford	...	2	2	H
Sat., " 21	Swindon Town	...	1	0	A
Sat., " 28	Aldershot	...	6	1	H
Sat., April 4	Torquay United	...	2	6	A
Fri., " 10	Bristol Rovers	...	1	1	A
Sat., " 11	Millwall	...	2	1	H
Mon., " 13	Bristol Rovers	...	6	2	H
Sat., " 18	Bristol City	...	2	0	A
Sat., " 25	Coventry City	...	4	0	H
Sat., May 2	Queens Park Rangers	...	0	3	A

RESERVE FIXTURES London Combination F. A.

Sat., Aug. 31	Watford	...	4	3	H 4 3
Mon., Sept. 2	Bournemouth	...	2	0	H 1 1
Sat., " 7	Charlton Athletic	...	2	4	A
Wed., " 11	Bournemouth	...	0	0	A
Sat., " 14	Clapton Orient	...	3	1	H
Sat., " 21	Southend United	...	1	5	A
Wed., " 25	Brentford	...	2	2	H
Sat., " 28	Northampton Town	...	3	0	H
Thurs., Oct. 3	Brentford	...	1	3	A
Sat., " 5	Crystal Palace	...	1	2	A
Sat., " 12	Reading	...	3	3	H
Wed., " 16	Bristol City	...	0	7	A
Sat., " 19	Millwall	...	3	1	A
Wed., " 23	Portsmouth	...	1	2	A
Sat., " 26	West Ham	...	3	0	H
Sat., Nov. 2	Swansea Town	...	1	1	A
Sat., " 9	Leicester City	...	3	0	H
Sat., " 16	Coventry City	...	0	1	A
Sat., " 23	Arsenal	...	1	2	H
Sat., " 30	Southampton	...	3	0	A
Sat., Dec. 7	Brighton & Hove A.	...	2	1	H
Sat., " 14	Queens Park Rangers	...	1	1	A
Sat., " 21	Chelsea	...	2	4	H
Wed., " 25	Fulham	...	0	2	H
Thurs., " 26	Fulham	...	0	1	A
Sat., " 28	Watford	...	1	1	A
Sat., Jan. 4	Charlton Athletic	...	6	0	H
Sat., " 11					
Sat., " 18	Clapton Orient	...	3	1	A
Sat., " 25	Southend United	...	3	1	H
Sat., Feb. 1	Northampton Town	...	1	0	A
Sat., " 8	Crystal Palace	...	5	2	H
Sat., " 15	Reading	...	1	4	A
Sat., " 22	Millwall	...	0	1	H
Sat., " 29	West Ham	...	1	4	A
Sat., Mar. 7	Swansea Town	...	5	0	H
Sat., " 14	Leicester City	...	0	3	A
Sat., " 21	Coventry City	...	1	2	H
Sat., " 28	Arsenal	...	0	5	A
Sat., April 4	Southampton	...	0	1	H
Fri., " 10	Tottenham Hotspur	...	3	1	H
Sat., " 11	Brighton & Hove A.	...	0	3	A
Mon., " 13	Tottenham Hotspur	...	1	5	A
Tues., " 14	Portsmouth	...	3	1	H
Sat., " 18	Queens Park Rangers	...	5	1	H
Sat., " 25	Chelsea	...	2	4	A
Sat., May 2	Bristol City	...	3	1	H

LEAGUE TABLES

LEAGUE III (Southern)

	Pld.	Won	Lost	Drn.	For	Agst.	P.
Clapton Orient	2	2	0	0	4	0	4
Southend United	2	1	0	1	10	4	3
Swindon Town	2	1	0	1	6	3	3
Brighton & Hove A.	2	1	0	1	4	3	3
Newport County	2	1	0	1	4	3	3
Bournemouth	2	1	0	1	5	4	3
Millwall	2	1	0	1	5	4	3
Exeter City	2	1	1	0	6	4	2
Bristol City	2	1	1	0	3	2	2
Bristol Rovers	2	0	0	2	0	0	2
Reading	2	1	1	0	2	2	2
Gillingham	2	0	0	2	3	3	2
Notts County	2	0	0	2	3	3	2
Watford	2	1	1	0	3	3	2
Aldershot	2	1	1	0	3	5	2
Crystal Palace	2	1	1	0	4	9	2
Coventry City	2	0	1	1	3	4	1
Queens Park Rangers	2	0	1	1	3	4	1
Cardiff City	2	0	1	1	2	3	1
Northampton	2	0	1	1	0	2	1
Torquay United	2	0	2	0	3	7	0
LUTON TOWN	2	0	2	0	1	5	0

LONDON COMBINATION

	Pld.	Won	Lost	Drn.	For	Agst.	P.
West Ham United	2	2	0	0	7	0	4
Tottenham Hotspur	2	1	0	1	14	3	3
Bournemouth	2	1	0	1	5	2	3
LUTON TOWN	2	1	0	1	5	4	3
Leicester City	1	1	0	0	2	0	2
Portsmouth	1	1	0	0	3	1	2
Coventry City	2	1	1	0	5	2	2
Millwall	1	1	0	0	3	2	2
Queens Park Rangers	2	1	1	0	4	3	2
Watford	2	1	1	0	6	5	2
Southampton	2	0	0	2	1	1	2
Arsenal	2	1	1	0	4	4	2
Reading	2	1	1	0	5	5	2
Northampton	2	1	1	0	6	6	2
Brentford	2	1	1	0	3	4	2
Clapton O.	2	1	1	0	2	6	2
Crystal Palace	2	1	1	0	5	15	2
Bristol City	2	1	1	0	1	4	2
Charlton Athletic	2	0	1	1	3	4	1
Chelsea	2	0	1	1	1	2	1
Swansea Town	2	0	1	1	2	4	1
Southend United	2	0	2	0	4	9	0
Fulham	2	0	2	0	1	4	0
Brighton & Hove A.	1	0	1	0	0	2	0

NEWBOLD & MARTELL

TELEPHONE
896

Coal and Coke Merchants

ESTABLISHED
1879

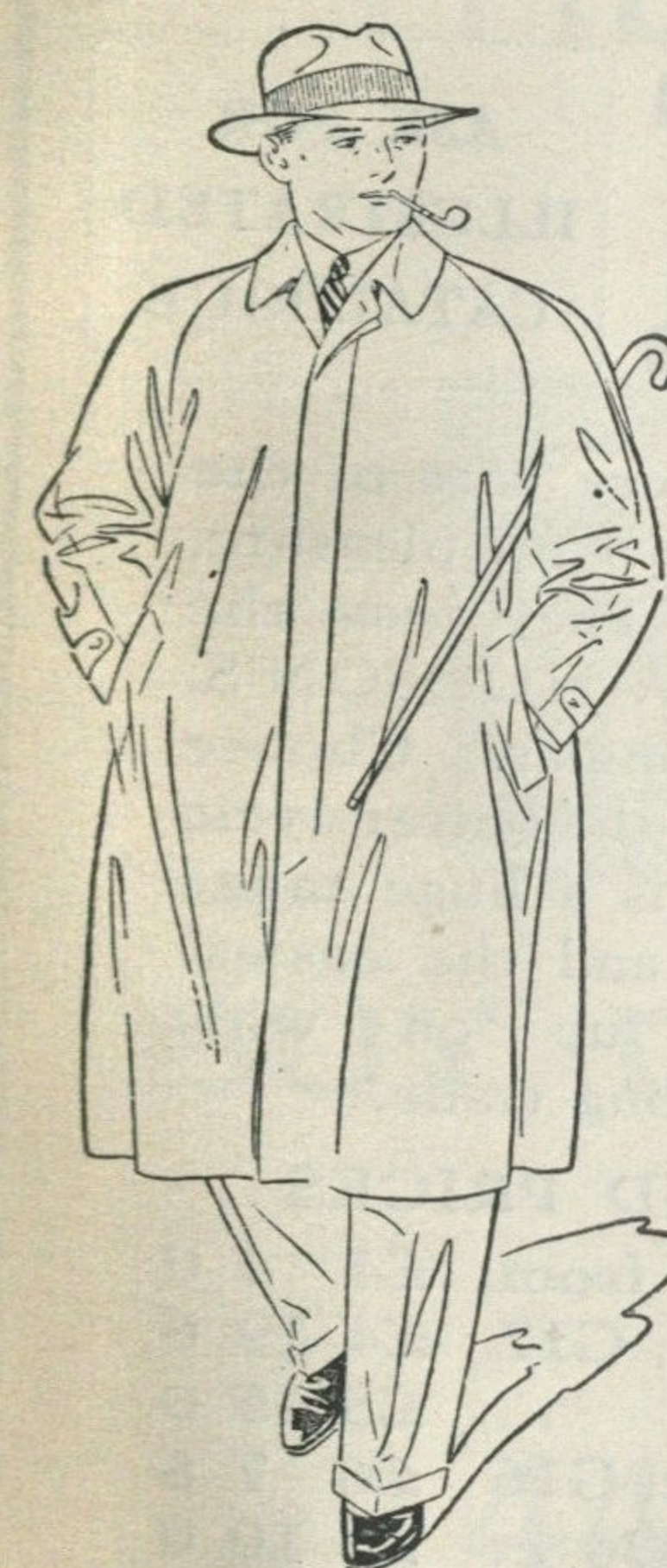
1 KING STREET - - LUTON

BURN

"Hucknall" Ashless Coal
It Scores Every Time!

Popular Price! Saves Labour!! Great Heat!!!

Why Not Try It?



Laceys
"The House that Value Built."

SOLE AGENTS IN LUTON

"DANNIMAC" RAINCOATS
FOR MEN AND BOYS

Cotton Gab. Self Lined	21/-
Half Lined Fleece	25/-			
Super Cotton Gab. Lined Check		30/-
Half Lined Fleece	35/-			
Egyptian Cotton Gab. Lined Check		35/-
Lined Fleece	42/-			
Egyptian Cotton Gab. Self Lined	42/-	and	50/-	
Wool Union Gabs. Lined Checks	32/6	and	42/-	

14 WELLINGTON STREET LUTON
or at 43a HIGH TOWN ROAD

PARTRIDGE & Co.

THE HOUSE FOR
GUARANTEED

SPORTS REQUISITES
and INDOOR GAMES

Official Suppliers to the Luton Town Football Club

FOOTBALLS
JERSEYS
KNICKERS
FOOTBALL BOOTS
SHIN GUARDS
GOAL NETS
KIT BAGS
ETC. ETC. ETC.

EVERY ARTICLE IS GUARANTEED
AND SATISFACTION ASSURED

IF YOU DEAL WITH

LUTON'S LEADING SPORTS OUTFITTERS

ASK FOR DETAILED PRICE LIST

Special Discounts to Clubs and Schools

HOCKEY
RUGGER
BADMINTON
BOXING
BILLIARDS
GOLF
AND ALL
SPORTS GOODS

A. G. Partridge & Co.
PHONE 234 10-12 CHAPEL ST.
LUTON

EASY
TERMS
ARRANGED

NEW-HUDSON

ASK FOR
ILLUSTRATED
CATALOGUE



Gent's Imperial Light Roadster
£4-19-6

Thousands of Cyclists in every part of the world ride NEW HUDSONS for pleasure, sport, business and touring. They know the unapproachable value of NEW HUDSON'S. Follow their example this Summer. Choose and ride NEW HUDSON, the better cycle for happier cycling. There is a huge range of models to choose from, and the easiest of easiest terms, backed up on wide experience of the cycling trade.

SOME MODELS AND PRICES

Juvenile Models from	£4 4 0
Black Clubs, Lady or Gent, G17		£4 19 6
Express 2-Speed, G17/TS	...	£5 15 0
City De Luxe Lightweight, G16		£6 7 6
Luxury Light Roadster, G30	...	£6 10 0
Featherlight, G22	£7 12 6
Thistledown, G23	£9 17 6