

Death of King George V  
Cup tie

THE  
**BURNLEY**  
FOOTBALL CLUB

**OFFICIAL PROGRAMME**

1913—1914  
F.A. CUP WINNERS.

1920—1921  
LEAGUE CHAMPIONS.

No. 26.

SATURDAY, JANUARY 26TH, 1935.

ONE PENNY.



BRIGHT &  
SPARKLING  
GRADELY  
BEER  
MASSEY'S BURNLEY BREWERY LTD



# Burnley Football & Athletic Company, Limited, TURF MOOR, BURNLEY. Established 1882. Telephone—Burnley 2052.

1	President: - L. HARGREAVES, Esq.	1
9	Chairman: - T. CLEGG, Esq.	9
3	Vice-Chairman: E. J. TATE, Esq.	3
4	Directors:	5
	MESSRS. H. DUCKWORTH, J. PICKUP, W. HOPKINSON, F. T. PILKINGTON, J. W. HOYLE, G. TATE.	
	Secretary: ALFRED BOLAND.	
	Manager: THOMAS G. BROMILOW.	
	Hon. Medical Officer: - - - - DR. D. A. KER.	

JAN. 26th, 1935.  
NUMBER 26.

**OFFICIAL PROGRAMME.** Price—ONE PENNY.

## CLUB GOSSIP.

We are pleased to welcome to Turf Moor to-day Luton Town, who confounded their critics in the last round by defeating First Division opponents—Chelsea—at Luton after running them to a draw at Stamford Bridge.

This year is Jubilee Year for the Luton Town club. They were originally formed as a result of a meeting held on April 11th, 1885, and were an amalgamation of two clubs, Luton Excelsior and Luton Wanderers.

Coinciding as it did with the club's Jubilee Year, the present campaign has provided Luton with an exemption from the early stages of the F.A. Cup Competition.

Here are some particulars of the players who will probably take the field for Luton this afternoon:—

Goal.

**Joseph Leo Coen.**—Born at Glasgow. Played for Clydebank, Celtic, and then came South to Guildford City. Bournemouth and Boscombe Athletic took him from there, and he had two seasons with them. Went on trial to Luton in August last on a free transfer, and in October displaced

Charlie Preedy. Has kept goal with increasing confidence and skill ever since. Age 22. 5ft. 9½in.; 12 stone.

Backs.

**Tom S. Smith.** Played for Burnham (near Burnley) before joining Nelson, in 1929-1930. Afterwards went to Leeds Training College until 1932, and on his return signed for Rochdale, for whom he played at centre-half for two seasons. Now engaged in scholastic profession at Letchworth. 5ft. 10in.; 12 stone.

**Harry J. Reece.**—Second season. From Darlaston Town to Aston Villa, then to Blackpool as soon as eligible for professionalism, where he remained for over four seasons, chiefly as half-back. Won his place in first eleven last season when Kingham was injured. Speedy and sturdy. 5ft. 8½in.; 11½ stone.

Half-backs.

**William Brown.**—One of the most versatile players Luton have had since the war. Played in every position except right back. Consistent and clever half-back, but deputised at outside right at end of last season for "Billy" Pease. 5ft. 11½in.; 11st. 10lb.

**William Thayne.**—Native of West Hartlepool. Had a term with Crystal Palace before being attached to Hartlepool United in 1930. All round athlete and long distance runner. Powerful physique. 5ft. 10in.; 13 stone.

**Chas. R. Fraser.**—First played for Luton eight seasons ago. Took benefit last season. One of the most popular players for Luton since the days of Bob Hawkes. All-round sportsman. Has played in 221 League games, 21 Cup ties, and 60 London Combination games. Respected by opponents both for cleverness and sportsmanship. 5ft. 11in.; 11st. 10lb.

Forwards.

**Wilfred Crompton.**—Started his professional career with Blackburn Rovers, and after some time with them joined Burnley. Later signed for Gillingham, and joined Luton at the beginning of the present season. 5ft. 8in.; 10st. 4lb.

**Sam Bell.**—Transferred from Norwich City at the end of last

season, and scored two goals in only game. Born at Burnhope, Durham. Coal miner, played for Burnhope Institute before going to Norwich City four years ago. Can take extreme right or either inside wing positions. 5ft. 8in.; 10st. 8lb.

**Ball** (centre forward).—Formerly with Manchester United, Huddersfield Town, and Sheffield Wednesday.

**Roberts.**—Secured by Luton Town from Birmingham.

**George Stephenson.**—Native of Stillington, Stockton. From local clubs to Durham City, and thence to Aston Villa, where he has had three seasons. Strongly built, is fast and clever, and a good shot. Can take either left wing position. 5ft. 9in.; 12 stone.

*A. Boland.*

# ADJUTANT

(F. STACEY LINTOTT)

WRITES

# EXCLUSIVELY

FOR THE

# DAILY MIRROR

DO NOT MISS READING THE OUTSPOKEN CRITICISM OF  
THE SUPREME SPORTS WRITER OF THE  
NORTH OF ENGLAND.

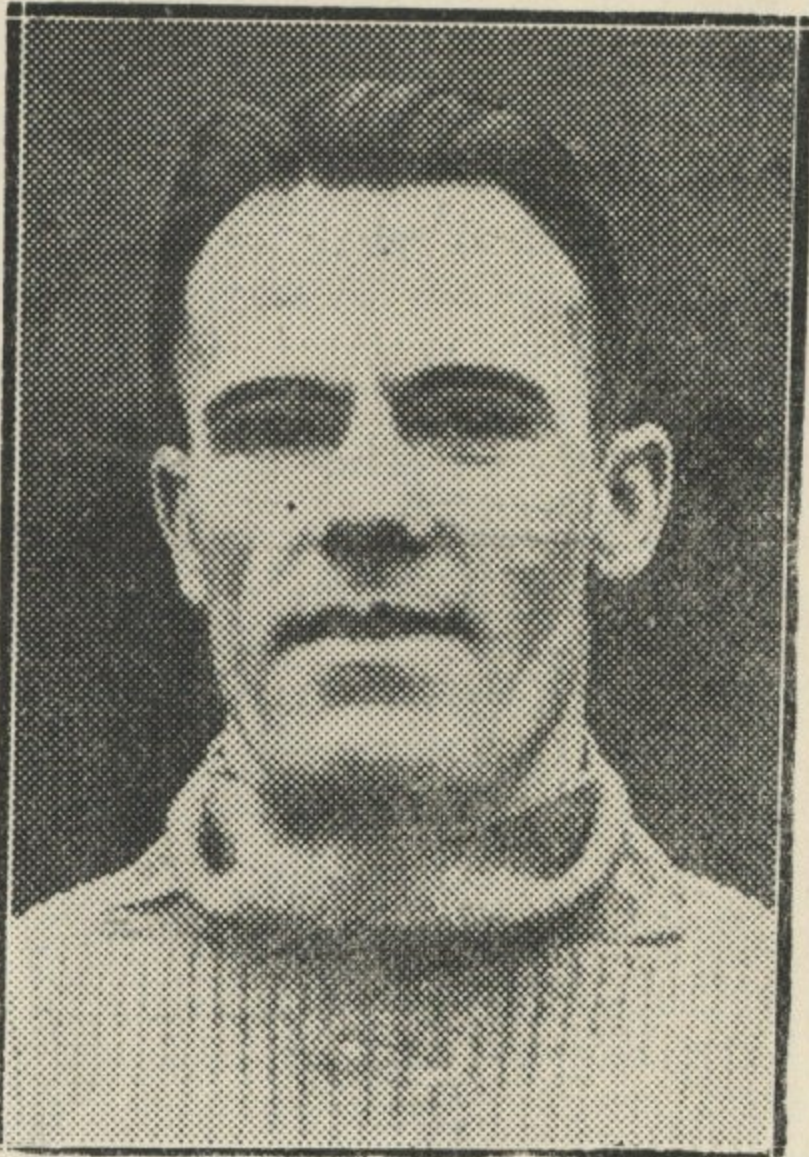


OUR PORTRAIT GALLERY.

No. 25.

S. R. Bennion.

After two seasons with us as a League and Central League player, Ray Bennion, the former Manchester United half-back, is now entrusted with the onerous duties of coach of our "A" team, which may be regarded as the training ground for our League players of the future. Ray is proving as popular in his new role as he did when he was a regular member of our first team. He has been at Turf Moor since November 3rd, 1932, and made his League debut for Burnley along with Bellis on December 3rd against Southampton. He had previously been eleven seasons at Old Trafford, refusing their terms at the close of the 1931-2 campaign. Before joining the United he was an amateur. He has been capped for Wales ten times, the last time being in 1932. In the 1932-3 season he made 24 first team appearances with Burnley, and last season seven first team appearances.



FORTHCOMING EVENTS.

TUESDAY NEXT,

JANUARY 29th.

Northern Mid-Week League.

Liverpool

Kick-off 3-15 p.m.

SATURDAY NEXT,

FEBRUARY 2nd.

Central League.

Aston Villa  
RESERVE.

Kick-off 3-15 p.m.

FIXTURES AND RESULTS.

SEASON 1934-35.

FIRST TEAM.						RESERVE TEAM.					
Date.	Opponents.	Grd.	F.	A.		Date.	Opponents.	Grd.	F.	A.	
1934.						1934.					
Aug. 25	Southampton	H	3	0		Aug. 25	Everton	A	2	1	
" 27	West Ham U.	A	2	1		" 27	Bolton Wan.	H	2	1	
Sept. 1	Notts County	A	0	1		Sept. 1	Huddersfield T. ...	H	2	1	
" 3	West Ham U.	H	5	2		" 5	Bolton Wan.	A	0	4	
" 8	Bradford City	H	2	0		" 8	W'hampton W. ...	A	1	5	
" 15	Sheffield Utd.	A	0	0		" 15	Sheffield Utd.	H	2	1	
" 22	Barnsley	H	4	1		" 22	Aston Villa	A	1	5	
" 29	Port Vale	A	1	3		" 29	Derby County	H	4	1	
Oct. 6	Manchester Utd....	H	1	2		Oct. 10	Manchester Utd. ..	A	3	2	
" 13	Swansea Town	A	0	2		" 13	Oldham Ath.	H	2	3	
" 20	Blackpool	A	0	1		" 20	Newcastle Utd.	H	3	2	
" 27	Bury	H	3	3		" 27	Manchester City...	A	3	3	
Nov. 3	Hull City	A	3	1		Nov. 3	Stoke City	H	2	6	
" 10	Notts Forest	H	2	1		" 10	Birmingham	A	2	1	
" 17	Brentford	A	1	6		" 17	Sheffield Wed.	H	5	1	
" 24	Fulham	H	3	1		" 24	West Brom. A.	A	1	7	
Dec. 1	Bradford	A	1	1		Dec. 1	Leeds United	H	3	4	
" 8	Plymouth Argyle.	H	1	2		" 8	Liverpool	A	4	3	
" 15	Norwich City	A	3	2		" 15	Bury	H	3	1	
" 22	Newcastle Utd.	H	0	3		" 22	Blackpool	A	0	2	
" 25	Bolton Wand.	H	2	1		" 25	Preston N. E.	A	1	2	
" 29	Southampton	A	0	0		" 26	Preston N. E.	H	8	1	
Jan. 1	Bolton Wand.	A	0	7		" 29	Everton	H	1	5	
" 5	Notts County	H	4	0		1935.					
" 12	Mansfield Town	H	4	2		Jan. 1	Oldham Ath.	A	6	2	
	F.A. Cup, 3rd Round.					" 5	Huddersfield T. ..	A	1	5	
" 19	Bradford City	A	1	1		" 12	F.A. Cup, 3rd Rd.				
" 26	Sheffield Utd.	H				" 19	W'hampton W.	H	1	3	
Feb. 2	Barnsley	A				" 26	Sheffield Utd.	A			
" 9	Port Vale	H				Feb. 2	Aston Villa	H			
" 16	Manchester Utd...	A				" 9	Derby County	A			
" 23	Swansea Town	H				" 16	Manchester Utd. ..	H			
Mar. 2	Blackpool	H				Mar. 2	Newcastle Utd.	A			
" 9	Bury	A				" 9	Manchester City.	H			
" 16	Hull City	H				" 16	Stoke City	A			
" 23	Notts Forest	A				" 23	Birmingham	H			
" 30	Brentford	H				" 30	Sheffield Wed.	A			
April 6	Fulham	A				April 6	West Brom. A.	H			
" 13	Bradford	H				" 13	Leeds United	A			
" 19	Oldham Ath.	H				" 19	Blackburn Rovers	A			
" 20	Plymouth Argyle.	A				" 20	Liverpool	H			
" 22	Oldham Ath.	A				" 22	Blackburn Rovers	H			
" 27	Norwich City	H				" 27	Bury	A			
May 4	Newcastle Utd.	A				May 4	Blackpool	H			



Telephone 3136 (3 lines).

Head Office: PLUMBE STREET.

## P. EASTWOOD, LTD.,

CARRIAGE AND MOTOR PROPRIETORS.

Rolls Royce MOTOR HEARSE and Fleet of Austin Cars for FUNERALS.

SPECIAL SALOON CARS FOR WEDDINGS.

December to March: Leeds Pantomime, Saturdays and Tuesdays.

Booking Office: **44a, ST. JAMES'S STREET, BURNLEY.**

Garage—PLUMBE STREET.

Colours—Claret and Light Blue Jerseys, White Knickers.

### BURNLEY

Goal—

1

Scott

Right Wing.

2

Richmond

Full-Backs—

3

Waterfield

Left Wing.

Half-Backs—

4

Brown, J.

5

Smith, W.

6

Robinson (Capt.)

Forwards—

7

Hancock

8

Brown, G.

9

Smith, C.

10

Hornby

11

Downes

Referee:

MR. H. N. MEE,  
(Mansfield).



Linesmen—

Mr. G. H. Coathup (Bebington)—  
RED FLAG.

Mr. W. Manifold (Buxton)—  
BLUE FLAG.

Forwards—

12

Stephenson

13

Roberts

14

Ball

15

Bell

16

Crompton

Half-Backs—

17

Fraser (Capt.)

18

Thayne

19

Brown, W.

Full-backs—

20

Reece

21

Smith

Goal—

22

Coen

Left Wing.

Right Wing.

### LUTON TOWN

Colours—White Shirts, Black Knickers.

Should any alteration be made, a notice will be sent round giving the name of the substituted player, and number of the position in which he will play.

PURITY — QUALITY — VALUE.

## MASSEY'S

PRIZE ALES AND STOUT.

Brewed from THE FINEST MATERIALS in a MODEL  
BREWERY under IDEAL CONDITIONS.

For all the Best Reports on All Sport

SEE THE

## “BURNLEY EXPRESS”

WEDNESDAYS and SATURDAYS.

'Phone  
3726.

## PALACE BURNLEY.

'Phone  
3726.

THE “CENTRE” OF ENTERTAINMENT.

A.B.C. GREATER PICTURE SEASON, 1935.

MONDAY TO FRIDAY — CONTINUOUS FROM 2-15.  
SATURDAY — THREE SHOWS AT 2-15 — 6-0 — 8-35.

MONDAY, 28th JANUARY, FOR THREE DAYS.

THE BEST AND LONGEST PROGRAMME IN TOWN.

THE BRIDE'S BIGGEST MISTAKE IS

JACK HALEY in (A.)

## “HERE COMES THE GROOM”

with MARY BOLAND, NEIL HAMILTON.

AND SOMETHING NEW—THE FEMALE FRANKENSTEIN,

MARY MORRIS in (A.)

## “DOUBLE DOOR”

with EVELYN VENABLE, KENT TAYLOR.

PATHETONE — PATHE GAZETTE.

THURSDAY, 31st JANUARY, FOR THREE DAYS.

JUDITH ALLEN, SIR GUY STANDING in (A.)

## “THE WITCHING HOUR”

— AND —

BURNS AND ALLEN in (U.)

## “MANY HAPPY RETURNS”

“TOYLAND” CARTOON (U.). PATHE PICTORIAL. PATHE GAZETTE.

TO-DAY.—BING CROSBY in “SHE LOVES ME NOT.” Book Early.

## KEEP WARM!

Let Your Overcoat and Suit this year be one that will give you warmth  
and wear. Prices from 65/-.

We hold an up-to-date Stock of Outfitting, and Supply Burnley Football  
Club Colours in: Scarves, 4/-; Ties, 2/6.

## REDMOND & FLETCHER,

TAILORS AND OUTFITTERS :: THE CENTRE, BURNLEY.



# KEY TO RESULT BOARD.

Saturday, January 26th, 1935.

		Half Time	Full Time			Half Time	Full Time
A	Blackburn Rovers v. Liverpool			I	Reading v. Millwall		
B	Bradford City v. Stockport County			J	Southampton v. Birmingham		
C	Derby County v. Swansea Town			K	Sunderland v. Everton		
D	Leicester City v. Arsenal			L	Swindon Town v. Preston North End		
E	Norwich City v. Leeds United			M	Tottenham H. v. Newcastle United		
F	Notts Forest v. Manchester United			N	West Bromwich v. Sheffield United		
G	Portsmouth v. Bristol City			O	Wolverhampton W. v. Sheffield Wednesday		
H	Plymouth Argyle v. Bolton Wanderers			P	Accrington S. v. Doncaster Rovers		

## PURE "PEN-ORA" PRODUCTS.

### CORDIALS—

Peppermint  
Black Currant  
Sarsaparilla  
Lemon  
Gingerette  
Raspberry  
Vimto  
Orange



There's  
something  
very nice  
about all this!

"PEN-ORA" MINERAL WATERS are manufactured under conditions of perfect hygiene from the finest ingredients, blended with pure filtered water from PENDLE HILL.

You will find that every member of the family will appreciate your thoughtfulness. Everyone knows that a due proportion of liquid refreshment is necessary and beneficial to our physical well-being.

**Padiham Aerated Water Co. Ltd.,**  
SMITHYGATE, PADIHAM. 'Phone 116.01292

## SPORTS GOODS You can Rely on.

SPECIAL TERMS TO CLUBS.  
Everything for Winter Sports  
Supplied.

FOOTBALL, BILLIARDS,  
BOXING, TABLE TENNIS,  
HOCKEY, BADMINTON.

**Chas. A. Clegg, Ltd.,**

Sports, Scout and  
Guide Specialists,

10, Market St., Burnley.

Established over 40 years. Telephone 3644.

**BARKER &  
DOBSON**

**GRAPE FRUIT  
MILK  
CHOCOLATE**

2d. 6d. 1/-



PREVENTS THIRST.

## FORTHCOMING EVENTS.

MONDAY NEXT, JANUARY 28th.

Football League:

Second Division Championship.

**Sheffield United**

KICK-OFF 3 p.m.

Subject to there being definite decisions in the  
Burnley and Sheffield United Cup Ties To-day.



## PLAYERS' APPEARANCES AND GOAL SCORERS.

### First Team.—Division II.

Downes	25	(4)
Brown, J.	24	
Scott	20	
Wallace	19	(1)
Robinson	19	(5)
Alderman	17	(2)
Brown, G.	17	(14)
Hancock	16	(2)
Smith, W.	16	
Douglas	14	(5)
Bellis	13	
Richmond	13	
Waterfield	13	
Smith, C.	11	(6)
Syme	9	
Prest	6	(1)
Hetherington	5	
Comrie	5	
Clacher	4	
Hornby	3	
Readett	3	
Graham	2	(1)
Johnson	1	
Walker, A. (o.g.)		(1)

### F.A. Cup Scorers.

Hancock	2
Smith, C.	1
Brown, G.	1

### West Lancashire League.

#### GOAL SCORERS.

R. G. Almond	6
F. Wilkinson	4
Sayers	3
F. Perrin	3
E. Derbyshire	2
Howarth	2
H. Bright	1
H. Hanson	1
Rodgers	1
Billington	1
Schofield	1
Laidman	1
Eastwood	1

### Second Team.—Central League.

Weale	24	(9)
Readett	22	
Howarth	20	(2)
Schofield	20	(2)
Clacher	19	(2)
Graham	19	(15)
Hornby	18	(6)
Johnson	15	(2)
Wilson	14	
Smith, C.	13	(16)
Richmond	12	
Prest	11	(2)
Bellis	11	
Waterfield	9	
Metcalfe	9	
Hetherington	8	
Smith, W.	7	
Alderman	6	(1)
Scott	5	
Laidman	5	(1)
Kiddy	5	
Syme	4	(2)
Douglas	3	
Hancock	2	(1)
Comrie	2	(1)
Sayers	1	
R. G. Almond	1	
Wallace	1	
Clarke (o.g.)		(1)

### Northern Mid-Week League.

#### GOAL SCORERS.

Graham	5
F. Wilkinson	4
Prest	2
Weale	2
Billington	1
J. Brearley	1
Hornby	1
J. Alderson	1
J. Preston	1
Schofield	1
Syme	1
J. Hardman	1
Alderman	1
Laidman	1
Clacher	1
Comrie	1

The figures in parentheses denote the number of goals scored by the particular player.

## Burnley Temperance Silver Prize Band.

F. BENTLEY, Hon. Secretary, 22, Pollard Street, Burnley.

J. HOWE, Bandmaster.

Open for Engagements for Field Days, Processions, and Concerts.

Whist Drives every Monday, Wednesday and Saturday in the  
Bandroom, Bell's Arcade, Hebrew Road.

Admission 6d. :: 75 per cent. in Prizes.

## LEAGUE TABLES UP TO DATE.

### THE LEAGUE.—Division II.

	Goals						
	P.	W.	L.	D.	F.	A.	P.
Bolton	25	18	7	0	67	32	36
Manchester U.	26	17	8	1	54	34	35
Brentford	25	14	5	6	58	31	34
West Ham U.	25	16	7	2	53	37	34
Blackpool	25	13	6	6	50	36	32
Notts Forest	25	12	7	6	48	36	30
Newcastle U.	26	14	10	2	57	47	30
Plymouth A.	25	11	8	6	48	42	28
<b>Burnley</b>	<b>25</b>	<b>11</b>	<b>9</b>	<b>5</b>	<b>42</b>	<b>42</b>	<b>27</b>
Bury	26	11	12	3	32	43	25
Fulham	25	8	9	8	40	37	24
Sheffield U.	25	8	10	7	47	40	23
Hull City	25	9	11	5	37	50	23
Southampton	26	7	10	9	30	45	23
Norwich C.	25	8	11	6	47	44	22
Bradford C.	25	9	12	4	35	38	22
Bradford	25	4	8	13	29	38	21
Barnsley	25	7	12	6	32	54	20
Port Vale	25	6	12	7	31	42	19
Swansea T.	25	6	13	6	31	42	18
Notts C.	25	5	15	5	27	53	15
Oldham Ath.	25	5	17	3	30	61	13

### CENTRAL LEAGUE.

	Goals						
	P.	W.	L.	D.	F.	A.	P.
West Brom. A.	26	21	3	2	88	37	44
Stoke City	26	16	5	5	69	37	37
Blackpool	25	12	7	6	54	39	30
Everton	24	13	7	4	60	45	30
Leeds United	25	11	7	7	45	42	29
Preston N.E.	24	14	10	0	51	42	28
Birmingham	25	11	8	6	54	45	28
Wolves	25	11	9	5	62	55	27
Liverpool	26	11	10	5	53	50	27
<b>Burnley</b>	<b>26</b>	<b>13</b>	<b>12</b>	<b>1</b>	<b>63</b>	<b>72</b>	<b>27</b>
Aston Villa	25	11	10	4	46	43	26
Derby County	25	10	10	5	48	53	25
Sheffield U.	27	11	14	2	50	47	24
Bolton W.	25	8	10	7	43	38	23
Sheffield W.	25	11	13	1	60	63	23
Bury	26	9	12	5	51	58	23
Manchester C.	25	7	12	6	46	53	20
Newcastle U.	26	7	14	5	61	65	19
Blackburn R.	25	5	11	9	37	46	19
Manchester U.	25	7	13	5	32	45	19
Huddersfield T.	25	8	14	3	36	50	19
Oldham Ath.	27	4	20	3	36	114	11

WILLIE  
HOLT

**BURNLEY** LTD.

**BILLIARD WORKS**

ROSEGROVE Tel. 3553. BURNLEY

MAKERS OF CHAMPIONSHIP TABLES.

Specialists in Club and Institute Furnishing  
and Billiard Repairs.

*After the Match Call at the*  
**DUKE BAR BILLIARD HALL**

For a Comfortable Game of Billiards or Snooker.

**10 Full-Size Tables.**



# BURNLEY'S LEADING COMMERCIAL HOTEL.

FULLY LICENSED.

A THWAITES' HOUSE.

PARTIES CATERED FOR.

COVERED GARAGE.

::

STOCKROOM.

---

HOT AND COLD RUNNING WATER IN ALL BEDROOMS.

---

## OLD RED LION HOTEL, MANCHESTER ROAD, BURNLEY.

♦♦♦♦♦  
HOT FIVE-COURSE LUNCHEON DAILY, 2/-.

12 a.m. to 2 p.m.

HIGH TEA OR SNACKS AFTER THE MATCH.

Telephone 263111.

Proprietor—  
JOHN BOLAND.

---

## COULD YOU KEEP IT UP FOR 90 MINUTES?

How does your favourite team get the strength and fitness to keep on, hard at it, for 45 minutes each way? Because hard training keeps their livers in perfect working order—that is the secret of their health and fitness. **YOU** can be fit, too! Of course you can't

train every day, but you can do the next best thing: Buy a penn'orth of Carters Little Liver Pills on the way home. They are the guaranteed medical formula for really waking up your liver, and keeping you fit and strong.

**WARNING:** *Be sure you get the genuine*



**CARTERS** (BRAND)

**LITTLE LIVER PILLS.**

LOOK FOR THIS TRADE MARK ON EVERY PENNY TWIST.

*Tune in to Radio Luxembourg Every Sunday Morning at 11 o'clock.*