

No. 9, Vol. XXX. Saturday, Sept. 15th, 1934 Two Pence

CRYSTAL PALACE F.C.

SELHURST PARK
S.E.25

Official
Programme
SEASON
1934-
35



PALACE

v.

LUTON TOWN

English League Match

Kick-off 3.30 p.m.

THE CAPTAIN

SPORTS AND ATHLETIC OUTFITTER

To Crystal Palace Football Club

FOOTBALLS

Captain 5-Star 22/6

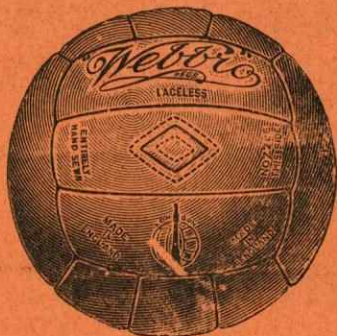
As used by the Crystal Palace Football Club for past 12 years.

Captain 4-Star 19/6

Captain 3-Star 17/6

Captain 2-Star 15/6

Captain 1-Star 12/6



All Requisites for

Football
Hockey
Tennis
Badminton
Darts
Scouts
Skating
Indoor Games
&c.

SPECIAL TERMS TO CLUBS AND SCHOOLS

36 Station Road, West Croydon

PHONE: CROYDON 0663

Next Saturday at Selhurst Park

PALACE

v.

LUTON TOWN

Saturday, Sept. 22nd, 1934

London Combination Match.

Kick-off 3.30 p.m.

(Ladies are reminded of the HALF-PRICE admission facilities to Enclosure, Centre Stand, and One Wing Stand)



President: F. J. NETTLEFOLD, Esq.

Directors: LOUIS T. BELLATTI, Esq. (Chairman). R. S. FLEW, Esq. (Vice-Chairman)

CAREY L. BURNETT, Esq. M. DERISLEY, Esq. F. GATES, Esq.

Registered Offices: SELHURST PARK, LONDON, S.E.25

Secretary-Manager: Mr. J. TRESADERN

Hon. Medical Officers: Dr. A. SCOTT TURNER, M.R.C.S., L.R.C.P. (Lond.)

Dr. J. T. BELL NICHOLL, M.B., Ch.B. (Ed.)

No. 9, Vol. XXX.

SATURDAY, SEPTEMBER 15th, 1934

Official Programme.

Palace v. Luton Town

Published by the Crystal Palace Football Club, Ltd., who will welcome comments and matter for publication in the Official Programme. All communications to the Editor, Crystal Palace Football Club, Selhurst Park, S.E.25.



WAS it not Disraeli who once said "There are lies, damned lies, and statistics"? At the risk of being accused of perjury, therefore, I propose to quote a few figures. Those referring to our present position on the Southern Section table make rather interesting reading.

Our defeat at Brighton, of which more anon, has pushed us down the table for the time being, and we are one place below Luton, to-day's visitors, with whom we are anticipating a stern struggle. Luton, like ourselves, are expecting to do big things this season, and both teams will be all out to show that their present position is no true indication of their ability.

The curiosity lies in our goal average. Doubtless, you have noticed that our thirteen goals is the

highest total in the Section, despite the fact that, for the first time in a game this season, our boys failed to score at Brighton last Saturday. On the other hand we have had twelve goals scored against us, and no club has conceded more, although Bristol Rovers and Cardiff City have both had twelve recorded against them.

Defence Crumples.

THESE figures more or less tell their own story, and it was the collapse of the defence that resulted in our defeat at Brighton. For the first hour we had the best of the game, and were plainly the superior side, but our boys seemed to go to pieces when Brighton scored fifteen minutes after the resumption.

After that goal the whole complexion of the game was altered, and our defence was so bewildered by Brighton's fierce onslaughts that it was no surprise to see the home side add two more goals. The first two came from Brown, who put the finishing touches to good work on the right wing, and Egan scored the third after neatly tricking a defender.

Palace Sportraits

No. 3



FRANK GATES, Esq.

Director since 1922.

The first part of the game certainly did not lead us to believe that such a result was in store. For the first quarter of an hour Brighton were defending desperately with their backs to the wall, and throughout the first half our lads made the running. The Brighton forwards were very weak during this period and attacked only spasmodically.

Although our forwards did not make the most of their scoring chances Brighton have to thank a magnificent defence for pulling them through their troublous period. Jones, a veteran back from Blackpool, played a delightful game that bore the hall-mark of craftsmanship, and was ably supported by King, his young giant of a partner, and Mooney. Behind them Thomson, the Albion's new Scottish goalkeeper, made some brilliant saves when all seemed lost.

Did not Profit

UNFORTUNATELY, our defence did not profit by the example set them by Brighton's rearguard, and when their turn came for a hammering they failed to stand up to the strain.

It was to be regretted that Dawes (a chill) and Smith (knee trouble) were absentees, but their deputies cannot be blamed for the defeat. Collins, the young player from Canterbury Waverley, made quite a promising first appearance in league football, and in the early stages of the game revealed many deft touches. Heinemann also work industriously at left half in place of Smith.

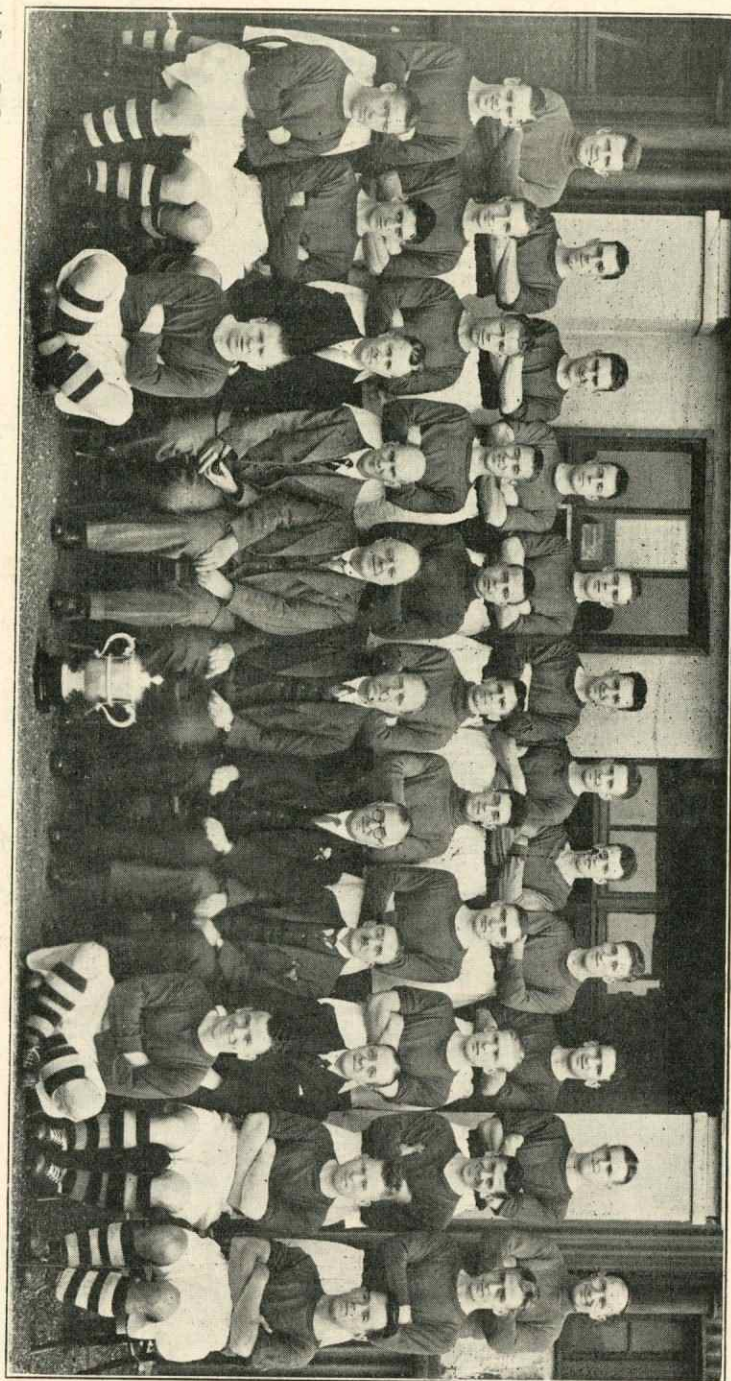
If we did not see so much of these players in the later stages of the game they certainly cannot be signalled out for blame. They were only in the same position as their more experienced colleagues.

One other interesting feature of the game was the first appearance in the league side this season of Billy Turner who took Handley's place at inside right.

(continued on back page)

CRYSTAL PALACE FOOTBALL CLUB, 1934-35

Official Photograph by—T. H. Everitt, 63, Anerley Road, Upper Norwood



Back Row—R. Greener
(Asst. Trainer)
Middle Row—Purton

Manders
Haynes

Smith
Finn

Rossiter
White

Handley
Stanbury

Reed
Dawes

Collins
Trickett

Heinemann
Dunn

Owens
Bliss

R. Turnbull
(Trainer)

PROGRAMME OF MUSIC

to be rendered by

The Crystal Palace Band

(Conductor: Mr. W. W. GRANT)

March ... "King Cotton" ... Sousa
Overture ... "La Militaire" Raymond
Walse ... "The Man on the Flying Trapeze"
Lee & Leybourne
Selection ... "Chu Chin Chow" ... Norton
Interval March "The New Colonial" ... Hall

A collection is taken at half-time
on behalf of Band Funds.

Practice Matches Allotment of Charity Funds.

Croydon General
Hospital,

£237 - 11 - 11

L.F.A. Benevolent
Fund.
St. John's Ambulance
Brigade,
Penge and Anerley
Philanthropic Society

Five Guineas each

A Total Distribution
of

£253 - 6 - 11

Palace v. Luton Town

SATURDAY, SEPTEMBER 15th, 1934

PALACE (CARDINAL & BLUE)

RIGHT

1—Dunn

2—Owens

3—Parry

4—Haynes

5—Wilde

6—Heinemann

7—Carson

8—Handley

9—Simpson

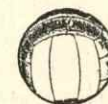
10—Dawes

11—Bigg

Referee:

T. J. BOTHAM (Walsall)

Linesmen:



Red Flag—W.F. Rosser, Upminster

Blue Flag—J.J. Taylor, Camberley

12—Russell

13—Rennie

14—Cook

15—Martin

16—Bell

17—Fraser

18—McGinnigle

19—Kean

20—Mackey

21—Reece

22—Coen

LEFT

RIGHT

LUTON TOWN

WE RECEIVE SOME GENTLEMEN
FROM THE HAT PLANTATIONS
OF LUTON TODAY—
AND TALKING ABOUT HATS WE
TRUST THE PALACE WILL PUT THE
TIN-HAT ON
LUTON'S VICTORY
ASPIRATIONS!



LAST WEEK OUR BOYS GATHERED UP



THEIR BUCKETS
AND SPADES
AND HIED
THEM AWAY
TO BRIGHTON

OF COURSE, WE ALL KNOW
BRIGHTON IS SO BRACING,
BUT SO FAR AS THE
PALACE PLAYERS
WERE CONCERNED
THERE WAS A
VERY DEEP AND
DIRTY DEPRESSION
KNOCKING
AROUND ON
SATURDAY!



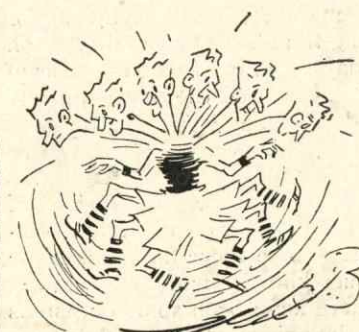
AFTER A
GOALLESS
FIRST HALF—
BRIGHTON
PLAYERS
MUST HAVE
PUT THEIR

RATTLE RATTLE
CHUG-GUG!



HEADS TOGETHER DURING THE
INTERVAL BECAUSE THEY CAME
OUT AND DID THIS
SORT OF THING
TO OUR
MR. DUNN

THE THIRD



STILL, ALL AGREED THAT
HAYNES PLAYED FINE
FOOTBALL. HE WAS HERE,
THERE AND EVERYWHERE AND
IN SEVERAL OTHER PLACES
AT ONCE

"Tin Hat for the Hatters."—by A. J. M.

Strawplaiters'

5/-

PLAYERS



WELCOME to LUTON TOWN, old Southern League friends and foes, and always sturdy fighters.

Actually, Luton Town is the oldest professional football club in the south of England, for in 1890 an offer of *five shillings* per week was made to each of three local players, F. and H. Whitby, and Read. At the end of that season it was decided to pay the whole of the first team, the agreed amount being 2/6 per week, with an extra 6d. for away matches, and payment for working time lost before mid-day on Saturdays. The following season the "wages" of the local players were doubled.

During this season Luton Town attain their jubilee, for the club was formed in 1885 by the fusion of Luton Wanderers and Luton Excelsior. Since those far off days the club has known many vicissitudes, and there have been some occasions when the existence of the club as a class organisation has been in very grave doubt, but at the present time the position is brighter than at any period in its history. Luton Town played in the Second Division of the Football League for three seasons from 1897, but returned to the Southern League in 1901 and remained in membership until the fusion with the Football League in 1920.

On the formation of the club the colours adopted were navy blue and pink halves for shirt and caps, and it was recorded on the minutes that "both cap and shirt be worn by each player on the field." In 1889 the colours were changed to "cochineal," and in 1900 to sky blue, with white knickers. In 1920 the white shirts and black knickers of the present day were adopted.

Fifteen of last season's players are available and the new players include two half-backs in W. Thayne (Hartlepool) and T. S. Smith (Rochdale). Two new centre-forwards in Colin Cook (Chesterfield) and J. T. Taylor (Shrewsbury Town). Two inside-forwards are G. Stephenson (Aston Villa)—not to be confused with the famous veteran of that name—and H. Hackett (Derby County). Two new wingers are C. J. Russell, top scorer of Bournemouth last season, and H. Haggard (Denaby U.). A well-known goalkeeper to Londoners is Preedy, of Arsenal fame.

Of these new players, the following seem to have found an early place in their league team:—Preedy, Stephenson and Russell, and will most likely be on view here this afternoon.

Matches played this season have resulted as follows:—

Home		Away
	Bristol Rovers	1—1
4—0	Cardiff City	0—1
1—2	Charlton Athletic	
1—1	Southend United	

The seven goals have been scored by:—Bell 3, Martin 2, Cook 1, and one by RUSSELL against Charlton Athletic last Saturday, which made his fiftieth League goal.

FOOTBALL LEAGUE FIXTURES, 1934-35

Date	Opponents	1933-34 Results	1934-35 Goals For Ag
Aug. 25	Aldershot	A 4 0	2 2
30	Queen's Park Rangers	A 1 2	3 3
Sept. 1	CARDIFF CITY	H 3 2	6 1
5	QUEEN'S PARK R.	H 4 1	2 3
8	Brighton & Hove	A 1 4	0 3
15	LUTON TOWN	H 2 2	
22	Southend United	A 4 0	
29	BRISTOL ROVERS	H 1 2	
Oct. 6	Charlton Athletic	A 2 4	
13	COVENTRY CITY	H 2 1	
20	Clapton Orient	A 0 2	
27	GILLINGHAM	H 3 2	
Nov. 3	Bristol City	A 2 2	
10	MILLWALL	H —	
17	Bournemouth	A 1 1	
24	1st Round English Cup		
Dec. 1	Newport County	A 0 1	
8	EXETER CITY	H 0 0	
15	Reading	A 0 0	
22	NORTHAMPTON	H 1 2	
29	Torquay United	A 1 2	
Jan. 5	TORQUAY UNITED	H 4 1	
12	ALDERSHOT	A 4 1	
19	Cardiff City	A 0 4	
26	WATFORD	H 4 3	
Feb. 2	BRIGHTON & HOVE	H 2 1	
9	Luton Town	A 1 2	
16	SOUTHEND UNITED	H 1 1	
23	Bristol Rovers	A 1 0	
Mar. 2	CHARLTON ATH.	H 1 0	
9	Coventry City	A 1 5	
16	CLAPTON ORIENT	H 3 2	
23	Gillingham	A 5 0	
30	BRISTOL CITY	H 0 1	
Apr. 6	MILLWALL	A —	
13	BOURNEMOUTH	H 4 1	
20	Watford	A 1 3	
27	NEWPORT COUNTY	H 1 1	
May 4	SWINDON TOWN	H 0 0	
	Exeter City	A 2 1	
	Swindon Town	A 2 3	
	READING	H 0 0	
	Northampton T.	A 2 4	

1st Round, Nov. 24th
2nd Round, Dec. 8th
3rd Round, Jan. 12th
4th Round, Jan. 26th
5th Round, Feb. 16th
6th Round, Mar. 2nd
Semi-final, Mar. 16th
Final, April 27th

Convicts v. Police

Seldom could convicts and police be friendly foes.

At Sing Sing, America's Dartmoor, things are different. Sing Sing convicts have a football team. So have the police.

They meet in an annual match. It opens the Sing Sing football season—this season on September 23.

This is the one fixture the convicts enjoy. If they win they feel the pleasure of wiping off an old score.

Yet no viciousness is brought into play. The convicts can be good sportsmen on the field of play, and the matches are fought out in the friendliest spirit.—*Daily Express*.

LONDON COMBINATION FIXTURES, 1934-35.

Date	Opponents	1933-34 Results	1934-35 Goals For Ag
Aug. 25	LEICESTER CITY	H 2 0	1 1
29	CHELSEA	H 1 3	4 0
Sept. 1	Swansea Town	A 2 2	1 1
8	Clapton Orient	A —	3 4
15	BRIGHTON & HOVE	H 0 2	5 1
22	CLAPTON ORIENT	H —	5 0
29	Spurs	A 2 5	
Oct. 6	MILLWALL	H 5 2	
13	LUTON TOWN	H 1 2	
20	QUEEN'S PARK R.	H 5 0	
27	Southend United	A 2 1	
Nov. 3	Queen's Park R.	A 2 3	
10	SOUTHAMPTON	H 2 1	
17	CHARLTON ATH.	H 3 2	
24	Charlton Ath.	A 6 2	
Dec. 1	BRISTOL CITY	H 2 0	
8	Portsmouth	A 0 1	
15	WATFORD	A 3 5	
22	West Ham United	A 3 5	
29	ARSENAL	A 0 0	
Jan. 5	Bournemouth	A 4 1	
12	NORTHAMPTON	A 2 3	
19	Reading	A 2 1	
26	BRENTFORD	H 1 1	
Feb. 2	Fulham	A 4 6	
9	COVENTRY CITY	H 5 2	
16	Coventry City	A 0 7	
23	Leicester City	A 1 6	
30	SWANSEA TOWN	H 5 2	
Mar. 6	Millwall	A 0 2	
13	Brighton & Hove	A 0 3	
20	SPURS	H 2 4	
27	Luton Town	A 1 3	
Apr. 3	Chelsea	A 1 1	
10	SOUTHEND UNITED	H 0 2	
17	Southampton	A 3 1	
24	Bristol City	A 2 1	
31	PORTSMOUTH	A 4 0	
May 7	Watford	A 1 4	
14	WEST HAM UNITED	H 7 1	
21	Arsenal	A 1 4	
28	BOURNEMOUTH	A 1 0	
Apr. 4	Northampton	A 2 3	
11	READING	H 0 1	
18	Brentford	A 4 6	
25	FULHAM	H 5 2	

7923

It was suggested, after the match on Wednesday, that the visiting goalie might have White

Ticket No. 7923 in his pocket, but had seen too much of the ball already, so made no claim. In case this is not so, and YOU have the ticket, we mention that the MATCH BALL is still available on application to Mr. L. W. Davis.

Visiting player (after the match): "I signed your book when we arrived at Selhurst Park."

Small Boy: "Yes, I know, but when I get two of yours I can swop 'em for one of Peter Simpson's."

Reserves' Nap Hand.

SOME consolation on that day was forthcoming in the fact that the Reserves, who entertained Brighton in a London Combination match, won handsomely and deservedly by five goals to one. Rooke and Manders are taking it in turns to lead the Reserves' attack, and it is noteworthy that whichever one is playing, goals seem to come freely.

Manders played well at centre-forward and had two good goals to his credit, scoring the first and the last. The fifth goal was from a fine shot from more than thirty yards out.

The Wimbledon amateur, Howard Barnes, played impressively at inside-left, and also scored twice. He combined effectively with his wing man, Crompton, whose goal completed the tally.

Brighton's forwards could not make much headway against the Palace half-backs, who played a strong spoiling game, and Brown did very well at full-back.

Return with Orient.

ON Wednesday the Reserves played their return London Combination match with Clapton Orient. Last week our boys were somewhat unlucky to lose an exciting match by the odd goal of seven. On Wednesday they turned the tables in no uncertain fashion, and defeated their opponents by the emphatic margin of five clear goals—their second quintet in four days.

This time Rooke led the attack, and emulated his feat of the first meeting by scoring three times. Good play by the half-backs provided him with two openings in the first half, when he accepted neat passes from Reed and Edwards.

In the second half Turner netted, Rooke followed with a delightful shot taken on the turn, and Howard Barnes completed the scoring. Despite the big score against them, the Orient fought gamely to the end, and the match was noteworthy for the high standard of football revealed by both teams.

Football League Table

Division III.

	GOALS						
	P.	W.	D.	L.	F.	A.	PTS
Coventry C.	5	4	1	0	10	1	9
Millwall ..	4	4	0	0	10	3	8
Brighton ..	5	4	0	1	10	4	8
Charlton A.	5	4	0	1	11	7	8
Cardiff City	6	4	0	2	8	12	8
Newport C.	5	3	0	2	10	6	6
Bristol C.	5	3	0	2	6	5	6
Swindon T.	5	2	2	1	8	6	6
Reading ..	5	2	1	2	7	4	5
Southend U.	6	2	1	3	11	10	5
Aldershot ..	5	2	1	2	8	8	5
Queens P.R.	5	2	1	2	10	10	5
Luton T. ..	5	1	2	2	7	5	4
Palace ..	5	1	2	2	13	12	4
Exeter City	5	2	0	3	6	6	4
Gillingham	4	2	0	2	7	7	4
N'hampn T.	5	2	0	3	6	10	4
Boscombe ..	5	2	0	3	5	11	4
Torquay U.	5	1	0	4	5	11	2
Bristol R. ..	5	0	2	3	5	12	2
Clapton O.	5	1	0	4	3	10	2
Watford ..	5	0	1	4	4	10	1

London Combination

	GOALS						
	P.	W.	D.	L.	F.	A.	PTS
Arsenal ..	4	4	0	0	21	3	8
Palace ..	6	3	2	1	19	7	8
Leicester C.	6	3	2	1	10	6	8
Reading ..	5	4	0	1	13	8	8
Queens P.R.	5	3	1	1	9	4	7
Portsmouth	5	3	1	1	11	6	7
Luton T. ..	5	3	1	1	11	18	7
Charlton A.	6	3	1	2	20	17	7
'Spurs ..	5	3	0	2	17	11	6
N'hampn T.	6	3	0	3	9	12	6
Fulham ..	5	2	1	2	7	6	5
Bristol City	6	2	1	3	13	17	5
Chelsea ..	6	1	3	2	7	11	5
Watford ..	7	1	3	3	8	19	5
Swansea T.	5	1	2	2	6	6	4
Coventry C.	4	2	0	2	9	10	4
Brentford ..	4	2	0	2	5	6	4
Bournem'th	6	1	2	3	8	12	4
Brighton ..	4	2	0	2	7	10	4
West Ham	5	2	0	3	7	10	4
S'thampton	5	2	0	3	5	9	4
Clapton O.	6	1	1	4	11	18	3
Millwall ..	3	0	1	2	1	7	1
Southend ..	4	0	0	4	4	13	0

TO-DAY'S

Half-Time Scores

(as shown on Score Board)

A	Arsenal v W. B. Albion
B	Chelsea v 'Spurs
C	Blackpool v Brentford
D	West Ham v. Fulham
E	Bournemouth v Gillingham
F	Bristol Rovers v Bristol City
G	Charlton A. v Southend U.
H	Exeter City v Millwall
K	Newport C. v Coventry C.
L	Northampton T. v Reading
M	Q. P. Rangers v Brighton
N	Watford v Clapton O.

Next

Wednesday

Evening

AT

Selhurst Park

Palace

v.

Millwall

London . .
Combination
. . Match

KICK-OFF 5.30 p.m.

—oOo—

Wednesday, September 19th

Popular Benefit Match



at
Selhurst Park



**Peter
Simpson's**

has been arranged for

Wednesday, October 31st, 1934

PALACE

V.

THE CORINTHIANS

Reserved Seats for the Centre Stand are now bookable
3/6 (including tax).