



**TRUE - FORM**



**FOOTWEAR**

**The Best Value**  
IN THE TOWN

=====  
**BUY FROM THE ACTUAL MAKERS**

**LOCAL BRANCH:**

**44, GEORGE STREET.**

**Head Office and Factories, NORTHAMPTON.**



# Luton Town Football & Athletic

CO., LTD.

PRESIDENT :  
MR. HARRY ARNOLD, C.A., J.P.

DIRECTORS :  
*Chairman* : COUNCILLOR CHAS. JEYES.

MESSRS. EDWARD MOUSE (*Vice-Chairman*), ERNEST G. GIBBS, STANLEY H. GODFREY, C.A.,  
HORACE S. HEWSON, STEWART C. WILKINSON, E. HUGH WOODS, C.A., J.P., PHILIP WRIGHT

SECRETARY-MANAGER : MR. HAROLD WIGHTMAN.

ASSISTANT SECRETARY : MR. A. E. WICKSON.

HONORARY MEDICAL OFFICER : E. J. CRARER, M.B., Ch.B.

F.A. Cup—3rd Round.

LUTON v. ARSENAL.

Sat., Jan. 13th.

## The Late Herbert Chapman.

Even the playing fields are not immune from the shadow of death. It lingers about this ground to-day, tempers the excitement and chastens the pleasure of a great crowd. Since we cannot control shadows, great or small, we would not have it otherwise. Tragic has been the bereavement suffered by a great game and a great club, but even more grievous would be the state of mind that could easily forget, on the threshold of the annual adventure, the passing of Herbert Chapman.

We know that when the thrill is over, and one or other club has fallen, victors will miss the hearty congratulation, and vanquished will miss the cheerful encouragement that Herbert Chapman would have spoken. Those who have the comforting philosophy that duty well done here means promotion to higher service will believe that his influence remains, while for those who may have no such conviction there is the evidence of his achievements.

Every follower on this ground to-day, and thousands elsewhere, would feel that we were remiss did we not in some simple way make common expression of our sense of loss to the game we all love so well, and effect will be given to this during the interval.

DURING THE INTERVAL THE LUTON BAND  
WILL PLAY "ABIDE WITH ME"

Since the above was written a further loss has befallen the Arsenal by the death of Mr. H. Langham Reed, a director of the Club. His association with the game may not have been so intimate as that of Mr. Chapman, but he



had a part in the building of the Arsenal team, and his colleagues will mourn his unexpected passing.

As we have this week been reminded by our old friend, Mr. Charles Green, this is the third time only in their long histories that the two clubs have been drawn together. The Arsenal defeated us rather luckily on the first meeting thirty-two years ago at Luton in a replay after we had drawn at Plumstead, and ten years ago there was no sort of fluke about their success at Highbury, where a big crowd saw the Arsenal win by four goals to one. We should be very well satisfied if we could take even a little revenge this afternoon and although our opponents are heading the League and we have a comparatively minor position in the Third Division, we are not without hope if our lads get going as they did against the 'Spurs last season.

We have Hutchison at outside left as the only change from the side that defeated Torquay, and it appears from the team selected for the Arsenal, that the main feature of the match is the number of experienced players taking part.

We hope for a really fine game, and we must not forget to give a cordial welcome to Mr. Adams, the referee, who, we believe, makes his first appearance at Luton.

**That other GOAL!**  
THE  
**MANCHESTER**  
**CAFE**

We Score over all others  
for  
VALUE  
VARIETY  
COMFORT  
SERVICE

**TEAS** LUNCHEONS  
SUPPERS . .

12, Manchester St. Luton  
CHAS. W. ATTERBURY

**BAILEY'S**  
TOBACCONIST AND  
COACH BOOKING AGENT

**"BEDFORD  
PANATELLAS"**

A Fine 2d. Smoke

Daily Coach Services  
to all parts of Great  
. . . Britain . . .

38, New Bedford Rd.

## ARSENAL PLAYERS

### FRANK MOSS

was born at Leyland, Lancashire. Was employed at the Leyland Motors when he came into prominence as goalkeeper for the Works Club. Preston North End had him for two seasons, and then Oldham Athletic, from which he went to the Arsenal two seasons ago. 5ft. 9½ins. 12st.

### CHAS. G. MALE

is a Londoner, and was trained in the West Ham School when Charlie Fraser won his youthful spurs. Played centre-half for Clapton when the Arsenal secured him and made him a left half before finding him a worthy successor to Tom Parker, who now manages Norwich City. 5ft. 9in. 11st. 7lb.

### EDRIS HAPGOOD

is a native of Bristol and played for the Rovers' Reserves before joining Kettering Town. In his six years with the Arsenal has won four International caps, F.A. Cup and two League Championship medals. 5ft. 9in. 11st. 10lb.

SALOON  
COACHES  
FOR



PRIVATE  
HIRE  
PHONE 288

**LUTON 2/6 LONDON**

REGULAR DAILY SERVICE

**FARES and TIMES AS USUAL**

BOOKING  
OFFICE: 25, PARK STREET WEST, LUTON



### CHAS. JONES

was born at Troedyrhiw, where our old player, Sid Reid, came from. Played for Cardiff City, Oldham Athletic and Notts Forest as a forward before joining the Arsenal in 1928. Went from outside left to right half with distinct success. Has seven International caps as a Welshman. 5ft. 7in. 11st. 9lb.

### HERBERT ROBERTS

was born at Oswestry, and played for Oswestry Town, when the Arsenal took a fancy to him seven years ago. Was a useful right half before being drafted to the pivotal position, where he has made a name as a defensive unit. 6ft. 12st.

### ROBERT JOHN,

the senior player of the club. Born at Barry Dock. Played for Barry and Caerphilly before joining the Arsenal in 1922. Capped eleven times for Wales, and been associated in all Arsenal's great achievements of recent years. 5ft. 7½in., 11st. 6lb.

### ERNEST COLEMAN

was born at Hucknall, Notts., and as a youngster had a trial with Notts Forest. Became a professional for Halifax Town, and played outside right, but made his name as the scoring centre-forward for Grimsby Town. In his third season there was transferred to the Arsenal. 5ft. 8in., 11st. 7lb.

### EDWIN R. BOWDEN

is a native of Looe, Cornwall. Joined Plymouth Argyle in 1926, and one of his earliest League games was against Luton as a centre-forward. Was transferred to the Arsenal last season, and has succeeded David Jack as inside right. 5ft. 9½in., 11st. 4lb.

### JAMES DUNNE

was born at Dublin, and came into the limelight as a player of Shamrock Rovers. Joined New Brighton in 1925, and the following season was transferred to Sheffield United. Has captained Ireland, and is in possession of nine International caps. Was transferred to the Arsenal in September last at a reputed fee of £8,000. 5ft. 9in., 12st.

### CLIFFORD BASTIN

was born at Exeter and played for Exeter City's League team when but sixteen years old. Joined the Arsenal in 1929. Has won all the major honours in English football. Was chiefly known as Alec James' partner, but this season has succeeded to the latter's position. 5ft. 9½in., 11st. 7lb.

### J. BEASLEY

is a product of the Arsenal nursery. Well built and strong on the run, he has won his place in the team by sheer merit. 5ft. 10in., 11st. 10lb.

## DODSON'S

BESPOKE AND  
SURGICAL  
BOOTMAKER

Work done by Skilled Men  
only.

Quotations on application.

NOTE THE ADDRESS—

54, ASH ROAD  
LUTON

AND STATION ROAD, HARPENDEN

## THE CORNER

ON YOUR WAY  
TO AND FROM THE  
MATCH GET YOUR

SUPPLIES OF  
TOBACCO

AND

Confectionery

AT

"THE CORNER"

All leading Brands in stock.

DUNSTABLE ROAD X

B  
E  
E  
C  
H  
  
R  
O  
A  
D

# The Fox Hotel

J.W. GREEN'S  
FINE  
ALES  
AND  
STOUTS



A. R.  
MONUMENT  
WILL BE  
PLEASED  
TO MEET  
OLD & NEW  
FRIENDS

PHONE 822

DUNSTABLE RD LUTON - CLOSE TO FOOTBALL GROUND





AND YOU CANNOT BETTER

**J. W. GREEN'S**

LUTONIAN

**No. 1 STRONG ALE**

Unsurpassed for Strength and Quality

**NOW OPEN**

SO

**"Get PATES  
to make it"**

at

**207, Dunstable Rd.  
LUTON.**

EST. SINCE 1870.

**LADIES' and GENT'S  
TAILOR**

**PALACE**

TO-NIGHT

**Marlene Dietrich**

IN

**SONG OF SONGS**

(A)

**LUTON STADIUM**

DUNSTABLE ROAD



**TO-NIGHT at 7.30**

ADMISSION 1/4, INCLUDING CARD AND TAX

**LUTON TOWN**

(WHITE SHIRTS; BLACK KNICKERS)

RIGHT

LEFT

<sup>1</sup> Harford

<sup>2</sup> Kingham

<sup>3</sup> Mackey

<sup>4</sup> Kean

<sup>5</sup> McGinnigle

<sup>6</sup> Fraser

<sup>7</sup> Pease

<sup>8</sup> Martin

<sup>9</sup> Bell

<sup>10</sup> Rennie (A.)

<sup>11</sup> Hutchison

Referee—

Mr. A. H. Adams  
(Sherwood, Nottingham).



Linesmen—

Mr. W. J. C. Rees, Carshalton  
(red flag); Mr. C. J. Barrick,  
Brafield-on-the-Green, North-  
ampton (blue flag).

<sup>12</sup> Beasley

<sup>13</sup> Bastin

<sup>14</sup> Dunne

<sup>15</sup> Bowden

<sup>16</sup> Coleman

<sup>17</sup> John

<sup>18</sup> Roberts

<sup>19</sup> Jones

<sup>20</sup> Hapgood

<sup>21</sup> Male

<sup>22</sup> Moss

LEFT

RIGHT

**THE ARSENAL**

(RED JERSEYS, WHITE SLEEVES; WHITE KNICKERS)

'PHONES: 980, 981, 982, 983 LUTON  
'GRAMS: "REQUIRE, LUTON, BEDS"

**W. H.  
LANCASTER**  
56, Cambridge Street  
LUTON

**Turf  
Commission  
Agent**

*Credit Accounts opened  
on Approved Reference*  
**ESTABLISHED OVER 20 YEARS**

ENGINEERS TO THE  
HAT TRADE FOR  
NEARLY 50  
YEARS

**JANES BROS. Ltd.**  
ADVICE AND DEMONSTRATIONS GLADLY GIVEN

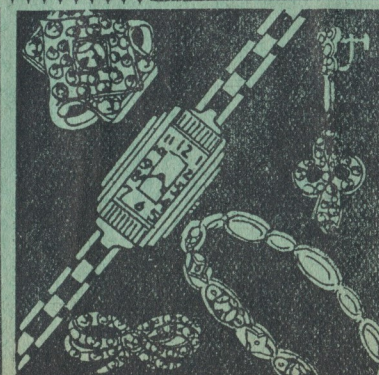
38, High Town Rd.,  
LUTON PHONE 242

**YOU CAN GET A  
BETTER OVERCOAT**

... by coming to John Bright, Luton's Master-tailor. An  
Overcoat better, in quality, because it is cut by experts to  
your own measurements . . . better in value, because it costs  
you no more than inferior machine-made clothes elsewhere.  
Come and inspect our splendid patterns. No obligation to buy.

Overcoats to Measure from **39/6** Suits to Measure from **50/-**

**JOHN BRIGHT** 36, GEORGE ST.,  
(OUTFITTERS LTD) LUTON



FOR THAT  
"DIFFERENT"

**GIFT**  
SHOP AT  
**WALKER'S**

THE JEWELLERS.

SEE SPECIAL XMAS  
DISPLAYS OF CLOCKS,  
SILVER AND CENTURY  
PLATE, ETC.

48 GEORGE STREET



## ATTENDANCES BAROMETER

Figures of Attendances and Receipts compared with those of last season. Receipts are given to the nearest £. Reserves' games marked (R). (Charlton take place of Brentford. In Reserves' games Bournemouth take the place of Orient).

	1932—33.			Rec.			1933—34.*			Rec.				
	Date.	Atten.	Gross	Net.		Date.	Atten.	Gross	Net.		Date.	Atten.	Gross	Net.
			£	£				£	£				£	£
Northampton	Aug. 27	11414	661	551	(R)	Aug. 26	3140	97	82					
Bristol C. (R)	„ 29	2367	72	61		„ 28	11904	663	553					
West Ham (R)	Sept. 3	3894	128	109		Sept. 2	10475	596	497					
Orient	„ 5	4496	296	247	(R)	„ 4	1704	51	43					
Southampton (R)	„ 12	1095	33	28	(R)	„ 9	2437	74	63					
Brentford (R)	„ 17	2214	68	58		„ 16	10072	559	466					
Torquay	„ 24	8424	475	396	(R)	„ 23	1899	79	66					
Reading (R)	„ 28	823	25	21	(R)	„ 27	728	23	19					
Swansea (R)	Oct. 1	1645	67	56		„ 30	8831	492	411					
Gillingham	„ 8	6244	360	300	(R)	Oct. 7	2634	83	76					
Newport	„ 15	6504	362	302		„ 14	7756	458	382					
Millwall (R)	„ 22	1468	47	40		„ 21	10674	617	575					
Cardiff	„ 29	6002	366	305	(R)	„ 28	1343	64	53					
'Spurs (R)	Nov. 5	2771	86	73		Nov. 4	7690	437	365					
Norwich	„ 12	5501	324	270	(R)	„ 11	2802	87	74					
Brighton (R)	„ 19	1577	50	43		„ 18	6778	374	311					
Portsmouth (R)	Dec. 3	2180	68	57		Dec. 2	5447	295	246					
						(R)	„ 9	1665	51	43				
Southend (R)	Dec. 17	2268	71	60		„ 16	5984	321	268					
Palace	„ 24	7042	397	331	(R)	„ 23	2106	65	55					
Arsenal (R)	„ 26	4659	151	128	(R)	„ 25	3439	107	91					
Bournemouth	„ 27	10428	617	514		„ 26	8301	488	407					
Orient (R)	„ 31	2071	64	58		„ 30	7696	425	355					
Totals	...	95087	4788	4008		Totals	125505	6506	5435					

\*Clubs as per fixture list.

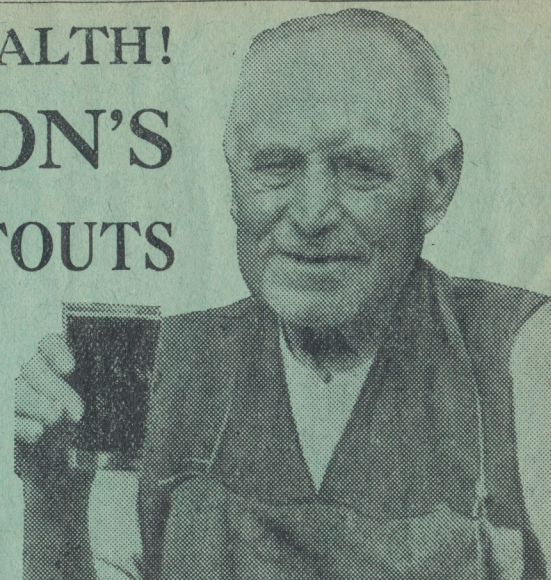
# GOOD HEALTH!

# SIMPSON'S

NOTED

# ALES & STOUTS

LOOK FOR  
A SIMPSON HOUSE  
AND OBTAIN THE  
FINEST BEER



Mr. John Draper, 79, and in our employ for 62 years. He has never had a day's illness and attributes this to an open-air life and good beer—SIMPSON'S, OF COURSE.

Always in perfect condition.

# W. F. BING

DYER & CLEANER

70, Stuart St., Luton

Cleaning Suits,  
Costumes and Coats  
a speciality from

# 3/3

Suits, Coats and  
Costumes Sponged  
and Pressed

# 1/6

MOURNING ORDERS

Dyed in 24 hours

VALET SERVICE

# BOND'S

# GARAGE

98/100, Castle St., Luton

FOR

EFFICIENT CAR REPAIR  
... SERVICE ...

Cars for Hire at Weddings, etc.

PETROL, OIL, ETC.

Full range of Accessories, including  
Spare Parts for Morris Cars.

OUR RADIO DEPT.

All leading makes of Sets and  
Components in stock at competitive prices. Cash or Terms.

'Phone 858.

Chas. Mares  
**MACK**

# 12/6

BELTED STYLE

# 13/6

2 YEARS' GUARANTEE

Chas. MARES, Ltd.

GEORGE ST. & DUNSTABLE RD.  
LUTON

# Charnley

Qualified

Ophthalmic Opticians

NATIONAL HEALTH  
INSURANCE OPTICIANS

SIGHT-TESTING

EYEGLASSES

SPECTACLES

. REPAIRS . .

11, Wellington St.,

LUTON



# GRAND THEATRE

0000000

TO-NIGHT at 7.45

Arthur Watson

PRESENTS

THE GREATEST OF ALL  
PANTOMIMES

## Cinderella

WRITTEN BY ARTHUR WATSON  
PRODUCED BY DUGGIE CAMPBELL

0000000

CHILDREN HALF-PRICE

## Today's Half-time Scores

The half-time scores are given in three lists, for the second and third which will be

CLUBS	SCORES
FIRST NAMED IS HOME TEAM	
FIRST LIST. F.A. CUP.	
A Burnley v. Bury	
B Birmingham v. Sheffield Utd.	
C Bolton v. Halifax	
D Brighton v. Swindon	
E Bristol C. v. Derby County	
F Chelsea v. W. Bromwich	
G Palace v. Aldershot	
H Charlton v. Port Vale	
K Chesterfield v. Villa	
L Cheltenham v. Blackpool	
M Grimsby v. Orient	
N Hull v. Brentford	

NOTE.—The letter in the Programme corresponds that the first-named Club has scored

## time Scores

Copy the first list and then watch the Board given immediately. Third list on next page.

CLUBS	SCORES
FIRST NAMED IS HOME TEAM	
SECOND LIST. F.A. CUP.	
A Liverpool v. Fulham	
B Leicester v. Lincoln	
C Leeds v. Preston	
D Manchester C. v. Blackburn	
E Manchester U. v. Portsmouth	
F Millwall v. Accrington	
G Forest v. Q. P. Rangers	
H Plymouth v. Huddersfield	
K Reading v. Oldham	
L Rotherham v. Wednesday	
M Southampton v. Northampton	
N Sunderland v. Middlesbrough	

with the letter on the Board—thus A 0-1 means 0 and their opponents 1.

## HEAR THE FULL TIME SCORES ON A PHILIPS

Type 634c D.C. Mains

### Superinductance Receiver

2 S.G. H.T., Single diode detector, with S.G. L.F., two output pentodes in parallel, very high sensitivity and large output. Special automatic fading compensator and Moving Coil Loudspeaker.

PRICE 17 gns., or by 12 monthly payments of £1 13s. 0d.

Type 834c (D.C. Mains) 12 gns., or 12 monthly payments of £1 3s. 6d. each.

An excellent Set at a cheaper price.

SEE AND HEAR EKCO'S LATEST! Model 74. The outstanding Super Het. Available in D.C., A.C., or Battery Type.

Cash £14 14s. Easy terms arranged.

DEMONSTRATIONS OF ANY SET IN YOUR OWN HOME.

F. COLIN GARRETT

40, Chapel St. :: LUTON

PHONE: 1076.

PLACE YOUR COMMISSIONS WITH

## W. D. WILLSMORE

TURF ACCOUNTANT

No Limit at Starting

: Price :

'Phone—

LUTON 1207—1208.

'Grams—

INFORM, LUTON.



For Credit Accounts

: write to :

37

Rothsay Rd.,

Luton

Send for the INFORM FOOTBALL TOTE COUPONS.

Established 1927.

Three Pools—Five Leagues—Nothing Barred—All Postal Expenses Allowed.

## BEST AFTER ALL TESTS

ASK  
FOR  
G.K.  
AT  
YOUR  
CLUB



DELIVERIES  
IN ALL  
DISTRICTS  
SEVERAL  
TIMES  
DAILY

G.K. - - 4d.  
G.K. MILD - 3½d.

SMALL BOTTLES  
LARGE BOTTLES  
7d.  
6d.

FLAGONS  
1/1  
11d.

SOLE  
LOCAL  
AGENTS

New Bedford Rd.

'Phone 241.

H. INWOOD, LTD.

42, Chapel St.

'Phone 1425.

SOLE  
LOCAL  
AGENTS

108, Dunstable Rd.

'Phone 241.



## To-day's Half-time Scores

CLUBS  
FIRST NAMED IS HOME TEAM

### THIRD LIST.

#### F.A. CUP.

- A Stoke v. Bradford  
B Swansea v. Notts Co.  
C Spurs v. Everton  
D Tranmere v. Southend  
E West Ham v. Bradford City  
F Wolves v. Newcastle  
G Workington v. Gateshead

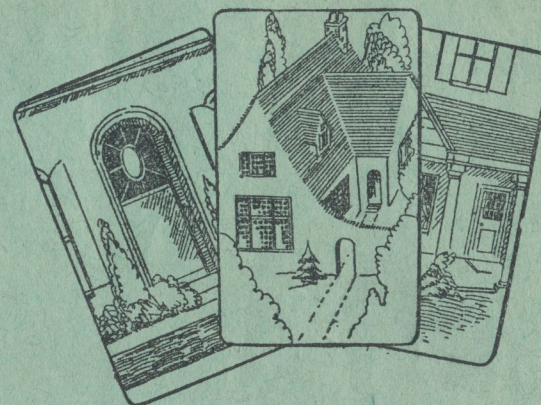
#### LEAGUE.

- H Watford v. Norwich  
K Darlington v. Walsall  
L Mansfield v. Stockport  
M Rochdale v. Doncaster  
N

## League Table DIV. III. (SOUTH)

						Goals.							
						P.	W.	L.	D.				
Norwich	.....	23	14	5	4	52	32	32					
Coventry	.....	23	12	4	7	61	31	31					
Rangers	.....	22	13	5	4	43	25	30					
Charlton	.....	22	14	6	2	53	31	30					
Reading	.....	22	12	6	4	48	29	28					
Bristol R.	.....	22	11	7	4	45	30	26					
Exeter	.....	24	11	9	4	45	35	26					
LUTON T.	.....	24	10	8	6	48	41	26					
Swindon	.....	22	9	8	5	32	38	23					
Aldershot	.....	22	7	7	8	24	26	22					
Palace	.....	23	8	9	6	39	41	22					
Northampton	.....	22	8	9	5	42	43	21					
Brighton	.....	23	7	10	6	35	35	20					
Newport	.....	22	4	7	11	22	32	19					
Orient	.....	23	7	11	5	32	44	19					
Watford	.....	23	7	12	4	38	39	18					
Southend	.....	22	6	10	6	24	36	18					
Bournemouth	.....	22	7	11	4	35	48	18					
Torquay	.....	22	8	12	2	26	50	18					
Gillingham	.....	22	6	12	4	39	57	16					
Bristol C.	.....	22	4	10	8	30	49	16					
Cardiff	.....	22	6	13	3	32	53	15					

## THE Leading Builders' Merchants IN THE DISTRICT



Every Builder needs Material—so why not have the best when the price is no more? For 34 years we have been serving the builders of this district with building materials, giving the lowest prices, the best service and the finest quality possible. Let us help you.

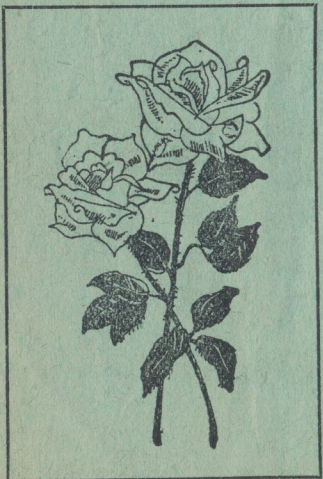
# A. EASTAFF & CO

SOLE PROPRIETOR · ARTHUR THOMAS EASTAFF  
HEAD OFFICE  
OLD BEDFORD RD · LUTON  
PHONE 197

BUILDING MERCHANTS, COAL AND COKE MERCHANTS, SLATING AND TILING MANUFACTURERS.

We carry large stocks of COAL for industrial and domestic purposes. Send us your enquiries and orders. Prompt attention and quick deliveries.

## WHITE ROSE CAFES



### CORN EXCHANGE

48, HIGH TOWN ROAD  
1, WIMBOURNE ROAD  
10 & 113, GUILDFORD ST.  
16, LEAGRAVE ROAD  
81a, CHURCH STREET

FOR

### FIRST CLASS TEAS

Lunches, Refreshments, etc.

*Quick Service and Quality Assured*

Call before or after the Match, you are sure to be satisfied

WHITE ROSE CATERING CO. (LUTON) LTD. (W. AUSTIN, SEC.)



# Your Own Judgment Will Tell You—

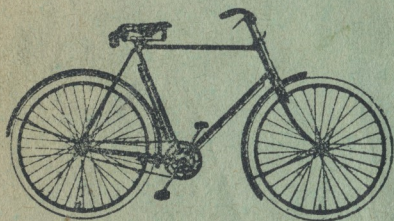
why New Hudson is THE BEST BICYCLE FOR YOU—directly you start examining it at Partridge's.

And as soon as you ride it—your judgment will be confirmed. You'll appreciate (by comparison) that never before has rider-comfort been so assiduously studied.

Every New Hudson Bicycle is the master-product of master-craftsmen with over 50 years' experience in the manufacture of QUALITY BICYCLES.

Small wonder that countless thousands of discriminating cyclists prefer NEW HUDSON—for "EXCELLENT" REASONS!

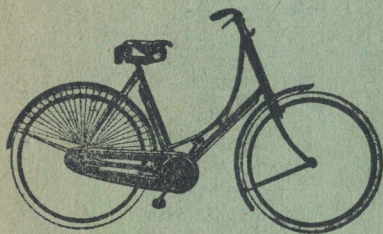
## NEW-HUDSON



MODELS

from

£4/19/6



EASY TERMS  
ARRANGED

LUTON'S LEADING CYCLE AGENTS

*A. G. Partridge & Co*  
PHONE 234 10-12 CHAPEL ST. LUTON NEW HUDSON DEPOT