

PROGRAMME

Div. III (S.)

NORWICH CITY v. LUTON

Sat., Sept. 23rd, 1933.

OVERCOAT STYLE

ONE OF OUR
MOST POPULAR
NEW MODELS

MADE FROM SMOOTH FINISHED
SAXONIES WHICH ARE BEAUTI-
FULLY WARM YET LIGHT IN
WEIGHT.

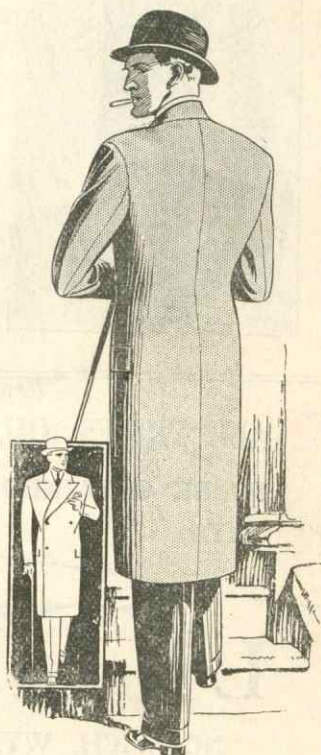
TO MEASURE OR READY TO
WEAR, FROM

4 guineas

'Phone 806

HAYES The Tailoring
Specialist

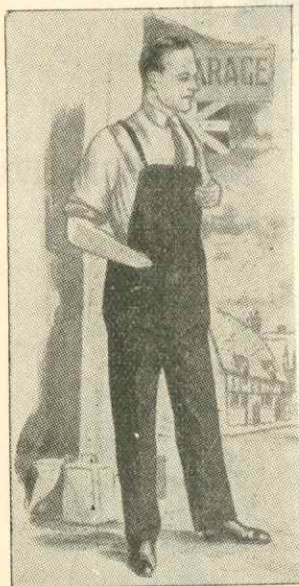
ST. STEPHEN'S CORNER, NORWICH



HOLDFAST

REGD.

THE WORLD'S BEST OVERALL



BUTCHERS
HAIRDRESSERS
ENGINEERS
WAREHOUSEMEN
MECHANICS
SALESMEN
DRIVERS
FIREMEN
PAINTERS
PORTERS
FARMERS
MILKMEN

WILL TELL
YOU THERE
IS NOTHING
TO EQUAL
**'HOLDFAST'
VALUE**

BRITISH
THROUGHOUT.

ALL PRICES, QUALITIES & STYLES

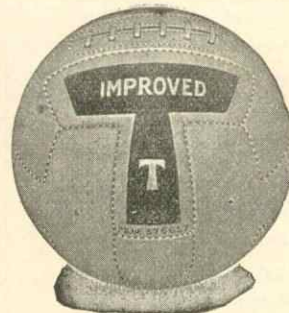
TO BE OBTAINED

AT

LITTLES

NORWICH, WYMONDHAM, WATTON & DISS.

LTD.



R. G. PILCH

SPORTS
EMPORIUM

AGENT FOR THE GENUINE
"IMPROVED T" FOOTBALL

FOOTBALL BOOTS, JERSEYS, KNICKERS,
HOSE AND EVERYTHING FOR EVERY
SPORT.

SPECIAL TERMS TO SCHOOLS AND CLUBS.
LISTS FREE.

ADDRESS _____
3 & 5, BRIGG ST., NORWICH Tel. **984**

NORWICH CITY FOOTBALL CLUB, LTD.

Members of The Football Association
Norfolk County Association, Football, Southern and
East Midland Leagues.

Directors:

W. HURRELL, Chairman.

R. G. PILCH, Vice-Chairman.

W. H. CLARKE. N. W. HOWLETT. C. B. L. PRIOR.

J. W. HOWES, Hon. Financial Secretary.
(Telephone—Norwich 1913).

Secretary-Manager:

T. R. PARKER.

(Telephone—Norwich 1514).

Trainer: R. YOUNG.

Ground: THE NEST, ROSARY ROAD.

Colours:

SHIRTS: YELLOW & GREEN HALVES; BLACK KNICKERS.

Stile Attendants:

Green and Yellow Arm Bands.

Ground Stewards:

Green Coats, Yellow Facings.

Registered Office:

THE NEST, ROSARY ROAD.

Telephone: Norwich 1514.

Seats must be booked by 1 o'clock at Messrs. Howlett's, who have the sole Booking.

Any complaints of incivility, lack of attention, etc., should be addressed to "The Manager, Norwich City Football Club, Ltd., The Nest, Rosary Road, Norwich."

W. H. LACEY & SON, L^{TD}.

WHOLESALE FRUIT & POTATO MERCHANTS

GROSVENOR ROAD, NORWICH

And at LOWESTOFT & SAXLINGHAM.

Write or Call for our Weekly Price List.
Special Line in Scotch Seed Potatoes during the Season.

Telegrams: **SPUDS** NORWICH
LOWESTOFT

Telephones: **NORWICH 757.**
LOWESTOFT 473.

CLUB CHATTER. By Manager T. R. Parker.

(Copyright Reserved).

So far so good: 9 points from our first 6 games, everybody happy and very likely thinking and planning out our future. The return game with the City at Bristol was, as we expected, a very hard and desperately fought battle, and in my opinion, we were a little fortunate to leave with both the points. The first half was slightly in our favour and we did deserve the lead at the interval; the penalty was taken splendidly by Ken Burditt.

The second half found us, at times, territorially overplayed, and only the fine play of our defence, which broke up attack after attack before Wharton was really troubled, saved us. I must mention here, however, one of Norman Wharton's saves: Bowen toe-ended a shot from about 25 yards, and Wharton positioned himself correctly for a save, but it suddenly swerved, dipped, and looped the loop or something similar, and our goalie had to make a dramatic last second reach to tip the ball over the woodwork.

What happened in the second half of the Brighton game? **All you good judges** saw for yourselves—we did not appear the same team as we were twenty minutes before, the work in some positions being done very lackadaisically, and consequently we allowed Brighton to play themselves into top dogs and draw level. Then, once again, the fatal spot came to our aid and was again taken splendidly by our penalty king. A general sigh of relief was heard when the final whistle sounded; it had been a game of periods, pleasing and otherwise, but it shows you what can be done when sleeves are rolled up.

At Wellingborough Sammy Bell's three goals were the result of some of the finest shooting I have seen for many a day. Matches such as the one against Higham Ferrers give us the opportunity to try out our young amateurs, and if you **Sportsmen**, who come along to witness these games, would give them encouragement instead of ridicule, we shall soon see the benefit of these games. W. Hinton started the scoring with two goals, both nicely taken, followed by Bell's brilliant shooting, resulting in two more, and one by Roy.

On Saturday last we met Aldershot Town, who, like ourselves, held the proud distinction of being the only unbeaten sides in the League. Well, we started off by giving them a goal lead in the first four seconds, the ball being swung out to Proud, the Aldershot right winger, and Willie Smith not connecting with his usual kick, it crossed again, caught our defence napping, and we found ourselves one down. The players fought back splendidly, more than holding their own, and after 30 minutes Scott and Warnes worked up a movement and a very fine goal resulted, coming from the foot of the former. We started the second half in great style, maintained our pressure right through, and had Vinell been in his best form we would have had the match well won. It was a disappointing ending: the ball came upfield from a clearance kick, Halliday was unsuspected by the sun and momentarily lost sight of it, and Nichol,



"Wot! another o' them M.E. Serviced Cars?"

Quick Service
for
**ALL SUPPLIES
ACCESSORIES
TYRES - OILS
PETROL - etc.**

Special Sections:
**CYLINDER
GRINDING
RADIATOR
REPAIRS
TYRE RE-BUILDING
BATTERY
REPAIRS
TRIPLEX GLASS
PAINTING AND
CELLULOSE
GENERAL
MECHANICAL
REPAIRS
COACHWORK
RENOVATIONS**

LOWEST CHARGES
ALL WORK
GUARANTEED

Also LONDON: 156 New Bond Street, W.1. — IPSWICH — BURY ST. EDMUNDS — LOWESTOFT

LET M-E- SERVICE Your Car too

Ask for details of the M.E. 25 Point 20/- Service
—it's an insurance as well as an economy!

Also the 10 Point 10/- Electrical Service.

Then there's the "QUICKWASH" Service
(Wash body—hose chassis) for 2/6

And your Car Garaged 6 hours for 6d.

GARAGE NEVER CLOSES

MANN EGERTON

& Co L^{TD}

EAST ANGLIA'S LEADING MOTOR HOUSE

**5, PRINCE OF WALES ROAD
PHONE 480 - NORWICH**

**Good fare
every day
all day**

Deacons' Restaurant

St. Stephen's Plain

ONE MINUTE FROM TRAM CENTRE

NORWICH.

Open Thursdays.

Telephone 240

**Here's Good Luck to Our Team
THIS SEASON !**

For good luck in all your motoring requirements whether in the nature of repairs to your present car or the purchase of a new one, remember to get into touch with us first.



You cannot do better, and every Maudes customer will tell you that.



GOALS GAINED AT

THE PREMIER TRANSPORT SPECIALISTS,

MAUDES of NORWICH, L^{TD}.

106/108, PRINCE OF WALES' ROAD, NORWICH.

TELEPHONE 2223.

Telephone

Norwich 2879

H. THIRKETTLE

**- High Class -
PORK BUTCHER**

BRANCHES THROUGHOUT THE CITY.

CLUB CHATTER—continued.

the opposing centre-forward picked it up and ran on a few yards. He was eventually crowded out, but managed to half-hit the ball; Wharton, who no doubt sensed danger, advanced, and to his and everybody's amazement, the ball slowly trickled into the net. That was with only five minutes to play, and we could not get on terms again, thus losing our unbeaten certificate.

Monday morning last, by the 7.40 a.m. train, we set hopefully forth on a long ride into Wales, in search of two points in the new Section of the Southern League, our hosts being Llanelly. The exchanges were very even all through, and we deserved a point, for after having spent nearly nine hours in a sitting position, our lads put up a remarkably good show.

OUR VISITORS

(G.E.T.)

To-day's game with Luton should attract a large crowd to the Nest, for the "Hatters" have always been popular opponents. Luton Town, founded in 1885, were one of the stalwarts of the old Southern League, in which they were runners-up in 1894-5, and 1895-6. It was from Luton in 1905 the Canaries' first season as a professional team that we secured those three very popular players—Punch McEwen, Billy Bushell and David Ross.

Whilst recalling those early days, many of us remember Bob Hawkes, a fine half-back, with a great personality; he gained International honours in 1907, against Ireland.

This season the Luton Directorate have greatly strengthened their team, and although I do not profess to be a prophet, I consider that the "Hatters" will be serious rivals for promotion; watch Luton. In Billy Pease we shall see a fine winger, who is no stranger to the Nest, having played here with Northampton before his very successful period with Middlesbrough. On the other wing we may see Pearson, late Chelsea, who, on his day, can be very dangerous; this popular little winger hails from Durham. Summing up, Luton, like Norwich, are a splendidly balanced team, hence we should see a well-contested game. May sportsmanship rule the day, not only on the field, but on the terraces and stands. "On the ball, City."

WE STRONGLY RECOMMEND

the following "UCAL" Products

- "UCAL" "Safety first" Iodised Throat Lozenges 8½d. and 1/3 per tin
"UCAL" "Paramalt" (Malt and Oil with Parrish's Food)
Best for Children. 1 lb., 1/6; 2 lbs., 2/9.
"UCAL" "Ginger Wine Essence," The Ideal Winter Drink
9d. per bottle.
"UCAL" "Honey, Lemon and Glycerine" (with Ipecacuanha)
8½d. per tub.

"UCAL" Products are sold only by fully Qualified Chemists.

OBTAIN YOUR'S
FROM

A. COLIN BROWN, M.P.S.

ROSARY CORNER PHARMACY, 102, THORPE ROAD, NORWICH.

WHY NOT SUPPORT LOCAL INDUSTRY

BY BUYING

LEVERIDGE'S IDEAL JAMS!!

Made with Norfolk Fruit and Norfolk Sugar
at **TIMBERHILL, NORWICH**, and guaranteed
absolutely pure.

GROCERS CAN OBTAIN SUPPLIES FROM THE MANUFACTURERS.

**THE GROCERS
OF
ENTERPRISE**



Tel.:
Norwich
808

F. R. UNDERHILL & SON

**NOTED
FOR
QUALITY**

21, THE WALK, NORWICH

PICTURE FRAMING

PICTURES

MIRRORS

LEVETON & SONS

11, ORFORD PLACE, NORWICH

CANARY SEED.

OUR RECENT FORM.

We ask our supporters to remember that Mr. Parker is not only building a team to take us into the Second Division—and stay there—but he is also trying a method of play which has proved, beyond all question, to be successful in recent years. Nobody can deny that it has taken the Arsenal to the top and kept them there.

This style may be foreign to some players and it is one that they must learn thoroughly and, in some cases, they will even have to eliminate from their minds the game they have been used to.

Every man has a job to do; let that man do it. It is not worth while shouting instructions to the team; they are playing to orders and will not leave their positions at the request of the crowd. Their boss is the manager and not the bloke behind the barrier. We have a very strong team and there could be no doubt in the minds of anyone who saw the Aldershot game that the Canaries will finish the season well above their opponents. We played championship football against Bristol City and in the first half against Brighton and when the team have made the new methods their natural game we shall not see them go down under pressure as they did in the second half of their last home match. As a matter of fact, this is just the kind of thing we expected whilst the team were settling down to the new idea.

ECHOES FROM THE RESERVE GAMES.

"Come up, the 'arves."

To an over-strong corner kick, "Go easy. You are not at Boundary Park."

"Go you back. He didn't call you." This to a visiting trainer who had run out and was sent back by the referee.

"They have got some good youngsters coming on."

"The best capture the City has made is Tom Parker."

"Hard luck, Ding-ey." This to Bell, of course.

"Don't you know what to do, ref.? The chap in the centre stand will tell you."

"Come up, the 'arves. Come on, the Arsenal."

E. MARCHESI, LTD.

CONFECTIONER AND CATERER.

AFTER THE MATCH

TEA

77

PRINCE OF WALES
ROAD

AT

5

DAVEY PLACE

SWISS CAFE, NORWICH

Always Buy Good Tea

LAMBERT'S

:: is always the Best of ::

GOOD TEA

F. LAMBERT & SON, LTD., HAY HILL, NORWICH.

JARROLD'S RESTAURANT

YOU
ARE CORDIALLY
INVITED TO
WALK
THROUGH
JARROLD'S
MANY
DEPARTMENTS



The finely appointed Restaurant, where
delightful Luncheons and Afternoon Teas
are served, is easily accessible by lift from
any floor.

SPECIAL FEATURES.

MORNING COFFEE.
TABLE D'HOTE LUNCHEONS.
AFTERNOON TEAS.

MUSIC EVERY AFTERNOON BY
G. HARRINGTON KIDD'S TRIO.

JARROLD & SONS, LTD.
LONDON STREET - NORWICH

IMPORTANT

It is Important and Vital to your business
that you should not run short of Stationery ...
Paper Bags ... Envelopes ... Wrapping Paper ...
Account Books ... Pencils ... Typewriter Car-
bons and Ribbons ... Inks ... Letter Files ... etc.
'Phone Norwich 2333, and obtain immediate
delivery of your requirements.

MANSFIELDS (NORWICH) LTD.

MAGDALEN STREET — NORWICH

CANARY SEED—continued.

THOSE WHO STAY WITH US.

Joe Hannah holds the record for service with the club, as this
is his thirteenth year. George Martin was at the Nest for eight
years, Dennington seven, Hampson and Livingstone six and
McKenzie, Wolstenholme, Campbell and Jackson five each.

BRAIN STORMS.

A conundrum given me by Tom Scott:—A football team
represented England but had not an Englishman in the team.
What team was it? Answer in programme of October 7th.

A referee's problem from the same source:—Robinson throws
in so far that the ball enters the net without a second player
touching it. What ruling should the referee give?

Incidentally, Robinson dreams of doing this.

OUR BEAUTIFUL LANGUAGE.

I did not realise what a wonderful language we possess until I
referred to the Dictionary one hot day last week. I turned to the
last word from curiosity and discovered that it was "Zythum, an
ancient kind of beer." How lovely. Just the thing for a hot day.

Then I looked to see what the first word was and it proved to
be the complement of the last word, "Aam, a liquid measure of
thirty gallons." Really! how appropriate. "Boy, telephone
Bullards and ask them to send me an aam of zythum.

US.

One of our over-keen supporters received a rap over the
knuckles in the Press last week and has been very quiet since.
Public opinion is the best thing for stopping the man who goes a
little too far, although everyone realises that it is only a man's
enthusiasm getting the better of him that causes offensive remarks
to referees.

Too-candid comments are worrying to younger players, but
the seasoned man is used to it and does not hear what is said. Our
own players tell me that they think we are a very fair crowd and
compare favourably with most grounds.

A famous Liverpool player used to put cotton-wool in his ears
and say, "I don't mind what they shout now."

TOM STEVENSON
FOR
FOOTBALL
HOCKEY
BADMINTON
BOXING
AND ALL INDOOR AND OUTDOOR GAMES
ONLY ADDRESS—
SWAN LANE, LONDON STREET
*Phone 1983 NORWICH.

OVERCOATS 37/6 & 45/-
NEWEST STYLES
CLOSE FITTING OR BELTED.

GREENS
NORWICH ——— LTD.

RED LION ST. (Orford Place)
ST. BENEDICT'S STREET,
NORWICH

ELECTRICAL GOODS
L E A C H
ALUMINIUM WARE
LINOLEUM & MATTING
C H
GUTTERS & PIPES

Loose's
LTD

SCORE
EVERY TIME
FOR
VALUE

C
H
I
N
A



G
L
A
S
S

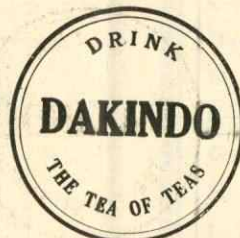
HARDWARE
SPORTS & WHIST
PRIZES

VISIT
23 & 25 MAGDALEN STREET
or PHONE: NORWICH 177

NORWICH CITY (Yellow & Green Shirts, Black Knickers)

K.O. 3.15

- (1) WHARTON
Goal
- (2) HANNAH
Right Back
- (3) SMITH
Left Back.
- (4) ROBINSON (B.C.)
Right Half
- (5) HALLIDAY
Centre Half
- (6) RAMSAY
Left Half
- (7) WARNES
Outside Right
- (8) SCOTT (T.)
Inside Right
- (9) VINALL
Centre
- (10) BURDITT
Inside Left
- (11) MURPHY
Outside Left
- Referee:—
Mr. A. J. SPITTLE
(Gravesend).
- Linesmen:—
Mr. L. A. Martin (Red Flag).
Mr. T. A. H. Hughes (Blue Flag)
- (12) PEARSON
Outside Left
- (13) RENNIE
Inside Left
- (14) TAIT
Centre
- (15) MARTIN
Inside Right
- (16) PEASE
Outside Right
- (17) FRASER
Left Half
- (18) MCGINNIGLE
Centre Half
- (19) KEAN
Right Half
- (20) MACKEY
Left Back.
- (21) KINGHAM
Right Back
- (22) MITTELL
Goal



Next Saturday—
Reserves v. Yeovil & Petters
Southern League Central
Kick off 3.15.

LUTON TOWN (White Shirts, Black Knickers)

League III (S.)

COMPLETE YOUR
COMFORT AND PLEASURE
BY
FURNISHING
AT

**GEO. ATTOE
& SONS**

COMPLETE
HOUSE FURNISHERS
and UPHOLSTERERS
54 & 56, STUMP CROSS
NORWICH.

REMOVALS Any Distance.
Estimates Free

YOU WILL SCORE

IF YOU PLACE ALL YOUR INSURANCES WITH THE

NORWICH UNION

SURREY STREET

NORWICH

NORFOLK & NORWICH SAVINGS BANK

Chief Office: SURREY STREET, NORWICH

Rates of Interest Allowed:

GENERAL DEPARTMENT - - - 2½%
SPECIAL INVESTMENT DEPARTMENT 3%

Branch Offices in

NORWICH GT. YARMOUTH KING'S LYNN NORTH WALSHAM ACLE

EASTERN COUNTIES EXPRESS SERVICES

between

NORWICH AND LONDON

5 DEPARTURES
DAILY OF **LUXURY COACHES**

from Thorpe Omnibus Station

8.45 a.m. 10 a.m. 12.30 p.m. 2.30 p.m. 5.45 p.m.

SINGLE

9/-

DAY RETURN

10/-

PERIOD RETURN

15/-

EASTERN COUNTIES BOOKING OFFICES IN NORWICH:—

79, Thorpe Road: Thorpe 'Bus Station: } 'Phone
Orford Place: York Hotel, Castle Meadow: } 2894-7

COME & SUPPORT
NORWICH CITY
AND
SCORE BY TRAVELLING
EASTERN COUNTIES
OMNIBUS COMPANY LTD.

Frequent services are operated from all parts of Norfolk and Suffolk to Norwich in time for matches at the Nest.

HIRE
EASTERN COUNTIES
TO CONVEY YOUR PARTY
TO

Football Matches, Club Outings,
Theatre & Dance Parties, etc.

LUXURY COACHES
AT
CHEAP RATES

Let us quote you.

Write:—
"Eastern Counties," 79, Thorpe Rd.,
Norwich.

FROM	Dep. Time	Arr. Nch.	FROM	Dep. Time	Arr. Nch.
	a.m.	p.m.		a.m.	p.m.
Acle	12.37	1.20	King's Lynn	11. 0	1.20
Attleboro'	12.55	1.48	Loddon	12.30	1. 6
Aylsham	1.23	2.7	Long Stratton	1.31	2. 6
Bawdeswell	1.30	2.20	New Buckenh'm	12.36	1.32
Brooke	1.28	1.55	Nth. Walsham	1.5	2. 0
Brundall	1.27	1.53	Wotton	12.40	1.58
E. Dereham	1.10	2.10	Wymondham	1.13	1.48
Hethersett	1.25	1.48	Yarmouth	12. 0	1.20

MAKE A GOOD RESULT CERTAIN

USE

NINHAM'S LEAVONA

THE IDEAL CAKE FLOUR.

HALF-TIME SCORE INDICATORS.

Programme No. 1.

A—Aston Villa v. Sunderland
B—Everton v. Arsenal
C—Leeds v. West Bromwich
D—Leicester v. Chelsea
E—Middlesboro' v. Manchester C. ...
F—Newcastle v. Birmingham
G—Sheffield U. v. Portsmouth
H—Stoke v. Derby
I—Tottenham v. Liverpool
J—Wolves v. Huddersfield
K—Bolton v. Brentford
L—Fulham v. Lincoln

Programme No. 2.

A—Southampton v. Millwall
B—West Ham v. Preston
C—Bournemouth v. Gillingham
D—Bristol City v. Aldershot
E—Cardiff v. Exeter
F—Charlton v. Crystal Palace
G—Clapton O. v. Brighton
H—Coventry v. Swindon
I—Newport v. Northampton*
J—Queen's P.R. v. Torquay
K—Reading v. Southend
L—Watford v. Bristol R.

*Next Saturday's opponents.

The results in the first column will be shown when the figure **1** is shown at the top of the Half-time Score Board, and the second column when the figure **2** is shown.

GREYHOUND RACING

at the

New Boundary Park Stadium

MONDAY, WEDNESDAY and SATURDAY,

at 8 p.m.

THRILLS !!

THRILLS !!

THRILLS !!

MEET YOUR FRIENDS BEFORE AND AFTER THE MATCH
AT

WHITE'S
QUEEN ST., NORWICH
FULLY LICENSED

SNACKS AT QUICK LUNCHEON COUNTER
TEAS. LONDON STYLE BILLIARDS.
HOT SUPPERS SERVED from 6 p.m.

FIRST ELEVEN FIXTURES.

SEASON 1933—34.

Date.	Opponents.	Season 1932-33		Season 1933-34	
		F.	A.	F.	A.
1933.					
Aug. 26	CLAPTON ORIENT	HOME	2 0	3 0	
" 28	BRISTOL CITY	HOME	3 0	7 2	
" Sept. 2	Swindon Town	Away	4 2	0 0	
" 6	Bristol City	Away	1 1	1 0	
" 9	BRIGHTON	HOME	1 0	4 3	
" 16	Aldershot	Away	3 1	1 2	
" 23	LUTON TOWN	HOME	2 1		
" 30	Northampton Town	Away	2 2		
Oct. 7	TORQUAY UNITED	HOME	1 2		
" 14	Queen's Park Rangers	Away	2 2		
" 21	GILLINGHAM	HOME	2 0		
" 28	Exeter City	Away	1 2		
Nov. 4	CARDIFF CITY	HOME	3 1		
" 11	Bournemouth	Away	1 1		
" 18	CHARLTON A.	HOME	—		
" 25	English Cup (1st Round)				
Dec. 2	READING	HOME	2 2		
" 9	Coventry City (2)	Away	5 3		
" 16	SOUTHEND U.	HOME	1 0		
" 23	Bristol Rovers	Away	1 1		
" 25	Crystal Palace	Away	0 4		
" 26	CRYSTAL PALACE	HOME	3 0		
" 30	Clapton Orient	Away	0 0		
1934.					
Jan. 6	SWINDON TOWN	HOME	5 2		
" 13	Watford (3)	Away	2 1		
" 20	Brighton	Away	1 1		
" 25	CAMBRIDGE UNIV. (Friendly)	HOME	3 1		
" 27	ALDERSHOT (4)	HOME	3 2		
Feb. 3	Luton Town	Away	1 1		
" 10	NORTHAMPTON TOWN	HOME	2 0		
" 17	Torquay U. (5)	Away	2 2		
" 24	QUEEN'S PARK R.	HOME	3 2		
Mar. 3	Gillingham (6)	Away	2 0		
" 10	EXETER CITY	HOME	0 0		
" 17	Cardiff City (S.F.)	Away	2 4		
" 24	BOURNEMOUTH	HOME	6 0		
" 30	Newport County	Away	4 3		
" 31	Charlton Athletic	Away	—		
April 2	NEWPORT COUNTY	HOME	3 1		
" 7	WATFORD	HOME	1 2		
" 14	Reading	Away	2 3		
" 21	Coventry City	HOME	2 1		
" 28	Southend U. (F.)	Away	1 2		
May 5	BRISTOL ROVERS	HOME	1 1		

The figures 2, 3, 4, 5, 6, S.F. and F. refer to Cup Tie dates.

The Norwich City House for PIANOS

For Cash, or most reasonable terms for Hire Purchase.
Sole Agents for
BRINSMEAD
CHALLEN
ROGERS
CRAMER
W. HOWLETT & SON
MARKET PLACE - NORWICH
The Finest Collection in the Eastern Counties.

RADIO
GRAMO-
PHONES
and
RECORDS

FYFFES
Bananas

"CANARIES
SOMETIMES
SING"

... Here's hoping success will call the tune throughout the season. Fyffes will help you keep your end up at all seasons—they're both heating and sustaining. Slip a few in your pocket—but be sure they are Fyffes. Look for the Blue Label.

THE CREAM OF
THE CITY'S VALUE

SHOP

IN

ST. BENEDICTS

ST.

ISSUED BY
ST. BENEDICTS & DISTRICT
TRADERS' ASSOCIATION,
NORWICH.

FROST &
BARRETT

(Proprietor: JOHN PYLE)

TOOL DEPOT

TOOLS
FOR
ALL TRADES

3 ST. JOHN MADDER MARKET

AND

3 LOBSTER LANE

NORWICH

Steward & Patteson

LIMITED

Pockthorpe Brewery, NORWICH

ESTABLISHED 1793

FOR
EXCELLENCE and QUALITY
 TRY THEIR
BOTTLED ALES & STOUT
 ALL

Guaranteed Brewed From

ENGLISH MALT & HOPS

OBTAINABLE AT ANY OF
 STEWARD & PATTESON'S
 : LICENSED HOUSES :

Family Trade Supplied by

SMITH & CARMAN
 PITT STREET
 NORWICH

TO-DAY'S **RIGHT BACK**

IS THE
 BACK
 COVERED
 BY



We have contracted for | **SUITS, OVERCOATS and** | in the history
 the Largest Stock of | **RAIN GARMENTS** | of the firm.

SOLE AGENTS **WALTER LITTLE & SONS LTD.**
 NORWICH, WYMONDHAM, WATTON & DISS.

FIXTURES, 1933-34.

SECOND TEAM.

Date, 1933.	Opponents.		Season 1932-33		Season 1933-34	
			F.	A.	F.	A.
Aug. 26	Folkestone (a)	...	Away	—	0	2
" 31	Bath City (c)	...	Away	—	2	1
Sept. 2	CLAPTON O. RES. (a)	...	HOME	—	6	2
" 7	Wellingboro' Town (d)	...	Away	1	0	4
" 9	Clapton Orient Res. (a)	...	Away	—	0	0
" 11	HIGHAM FERRERS (d)	...	HOME	—	5	0
" 16	KETTERING TOWN (d)	...	HOME	—	6	4
" 18	Llanely (a)	...	Away	—	1	2
" 21	Bedford T. (d)	...	Away	1	1	4
" 25	Rushden Town (d)	...	Away	2	1	—
" 28	Bath City (a)	...	Away	—	—	—
" 30	YEovil & PETERS U. (a)	...	HOME	—	—	—
Oct. 5	LLANELLY (a)	...	HOME	—	—	—
" 7	Dartford (b)	...	Away	1	1	—
" 14	DARTFORD (a)	...	HOME	3	1	—
" 19	CLAPTON ORIENT RES. (b)	...	HOME	—	—	—
" 21	Margate (b)	...	Away	—	—	—
" 28	FOLKESTONE (a)	...	HOME	3	1	—
Nov. 4	Tunbridge Wells R. (a)	...	Away	1	0	—
" 6	Millwall Res. (b)	...	Away	1	2	—
" 11	STAMFORD (d)	...	HOME	—	—	—
" 18	Dartford (a)	...	Away	1	1	—
Dec. 2	TUNBRIDGE W.R. (a)	...	HOME	2	1	—
" 9	Stamford (d)	...	Away	—	—	—
" 16	RUSHDEN TOWN (d)	...	HOME	4	1	—
" 23	PLYMOUTH A. R. (a)	...	HOME	—	—	—
" 25	Plymouth A. R. (a)	...	Away	—	—	—
" 26	DARTFORD (b)	...	HOME	3	1	—
" 30						
1934.						
Jan. 4	BOURNEMOUTH (b)	...	HOME	2	3	—
" 6	Clapton Orient Res. (b)	...	Away	—	—	—
" 13	TUNBRIDGE W.R. (b)	...	HOME	2	1	—
" 20	GUILDFORD C. (a)	...	HOME	3	1	—
" 27	Folkestone (b)	...	Away	3	5	—
Feb. 3	BEDFORD TOWN (d)	...	HOME	3	0	—
" 10	Guilford City (a)	...	Away	3	2	—
" 17	MARGATE (b)	...	HOME	—	—	—
" 21	Bournemouth (b)	...	Away	3	3	—
" 24	Kettering T. (d)	...	Away	4	2	—
Mar. 3	BATH CITY (a)	...	HOME	—	—	—
" 10						
" 17						
" 22	MILLWALL RES. (b)	...	HOME	3	1	—
" 24						
" 30	GUILDFORD CITY (b)	...	HOME	3	1	—
" 31						
April 2	Guilford City (b)	...	Away	3	2	—
" 3						
" 7	Higham Ferrers (d)	...	Away	—	—	—
" 14	FOLKESTONE (b)	...	HOME	3	1	—
" 19	Yeovil & Peters U. (a)	...	Away	—	—	—
" 21						
" 28	WELLINGBORO' T. (d)	...	HOME	12	0	—
May 5	Tunbridge Wells R. (b)	...	Away	1	1	—

a. Southern League Central. b. Southern League Eastern.
 c. Championship Match. d. East Midlands League.

W. PHILLIPS

Ironmonger

ST. ANDREW'S HALL PLAIN



Agent for
FIDDIAN'S
CELEBRATED
"ALBION"

SPADES,
SHOVELS
& FORKS



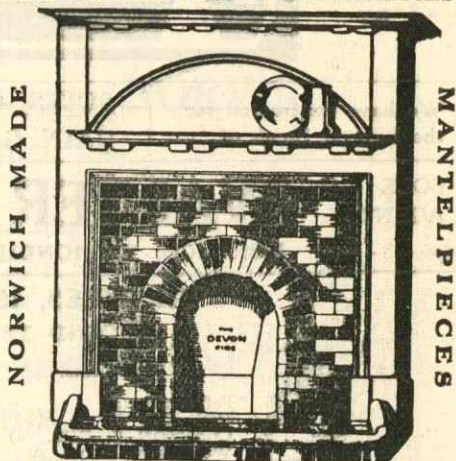
NORFOLK SPADES from 2/10
DIGGING FORKS from 2/11

Every Tool Warranted and
replaced if defective. :

R. J. PRYCE & Co.

WHOLESALE IRONMONGERS
LOWESTOFT.

ONE OF OUR MANY SPECIALITIES



NORWICH MADE

MANTELPICES

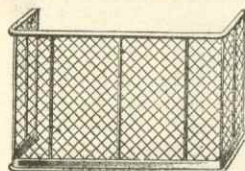
VISIT OUR SHOWROOMS and VIEW
ONE OF THE FINEST SELECTIONS
IN THE EASTERN COUNTIES.

'PHONE No. 764
(Two Lines)

'GRAMS:
"PRYCE, LOWESTOFT."

PALMER 75, ST. BENEDICT STREET, IRONMONGER NORWICH

CHEAPEST STORE for **IRONMONGERY, PAINTS, DISTEMPERS,**
ETC.



HEAVY BRASS RAIL FIREGUARDS

From 4/9

GUARANTEED ELECTRIC LAMPS

From 1/-

WHO'S SCORED TO SEPTEMBER 21st, 1933.

1st Team.

League Matches only.

Scott (T.)	...	4
Vinall	...	4
Warnes	...	3
Burditt	...	2
Murphy	...	2
Williamson	...	1

2nd Team.

League and S.L. Cup
only.

Bell	...	8
Williams	...	6
Roy	...	3
Hinton, W. G.	...	2
Pike	...	2
Thompson	...	2
Keating	...	1
Robinson (B.)	...	1
Wilson	...	1

YOUNGS & CRAWSHAY'S CHAMPION GOLD MEDAL ALE

FIRST IN QUALITY.

ALWAYS EXCELLENT.

ON SALE IN BARS AT "THE NEST."

ARTHUR NOBLE

IS NOW AT

THE "HEARTSEASE"

PLUMSTEAD ROAD, NORWICH,

where the above celebrated Ales are obtainable in cask and bottle.

OFFICIAL ATTENDANCE.

"PENNY-ON-THE-BALL" RESULTS.

Saturday, Sept. 9th.—Official attendance, 14953. Winner:—
J. E. Potter, 473, Earlham Road, Norwich. Estimate, 14954.

Monday, Sept. 11th.—Official attendance, 1785. No competition.

Saturday, Sept. 16th.—Official attendance, 3627. Winner's
name will be published in next issue.

TO LET.

League III. (Southern).

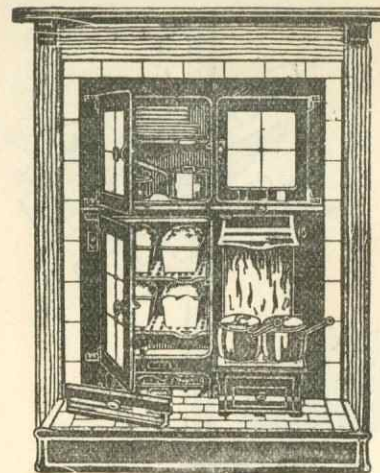
	Pld.	Won.	Drn.	Lst.	Goals		Pts.
					For.	Agst.	
Exeter City	7	5	0	2	16	9	10
Crystal Palace	7	4	2	1	14	8	10
NORWICH CITY	6	4	1	1	16	7	9
Aldershot	6	3	3	0	8	4	9
Swindon Town	6	3	2	1	10	5	8
Charlton Athletic	6	3	2	1	13	8	8
Bristol Rovers	6	4	0	2	12	8	8
Luton Town	7	3	2	2	19	12	8
Cardiff City	6	3	1	2	9	7	7
Torquay United	6	3	1	2	10	15	7
Bournemouth	6	3	0	3	13	14	6
Queen's Park Rangers	6	3	0	3	8	9	6
Gillingham	6	2	2	2	10	12	6
Clapton Orient	6	2	1	3	9	9	5
Reading	6	2	1	3	7	10	5
Southend	6	2	1	3	6	11	5
Brighton	7	2	1	4	12	15	5
Coventry City	6	2	0	4	15	12	4
Newhampton	6	1	2	3	7	12	4
Newport County	6	0	3	3	5	10	3
Watford	6	1	0	5	10	15	2
Bristol City	6	0	1	5	5	22	1

Southern League (Central Section).

	Pld.	Won.	Drn.	Lst.	Goals		Pts.
					For.	Agst.	
Plymouth Argyle Res.	3	3	0	0	12	2	6
Folkestone	5	3	0	2	7	6	6
Llanellay	5	3	0	2	6	6	6
NORWICH CITY RES.	4	1	1	2	7	6	3
Bath City	2	1	0	1	3	5	2
Yeovil & Petters	3	1	0	2	3	7	2
Clapton O. Res.	2	0	1	1	2	6	1
Tunbridge Wells Rangers ...	1	0	0	1	0	1	0
Guildford City	1	0	0	1	1	2	0
Dartford	No games played to date.						

Southern League (Eastern Section).

	Pld.	Won.	Drn.	Lst.	Goals		Pts.
					For.	Agst.	
Guildford City	6	3	1	2	13	10	7
Margate	2	2	0	0	3	0	4
Folkestone	1	1	0	0	2	1	2
Millwall Res.	2	1	0	1	4	5	2
Bournemouth Res.	2	1	0	1	5	2	2
Dartford	3	0	1	2	1	5	1
Tunbridge Wells Rangers ...	1	0	0	1	1	4	0
Clapton O. Res.	1	0	0	1	0	2	0
NORWICH CITY RES.	No games played to date.						



**TRIPLEX
GRATES**

INSTALL
WITHOUT DELAY

FINAL SCORE

TRIPLEX

3

KING COAL

1

GUNTON, SONS & DYBALL, LTD.

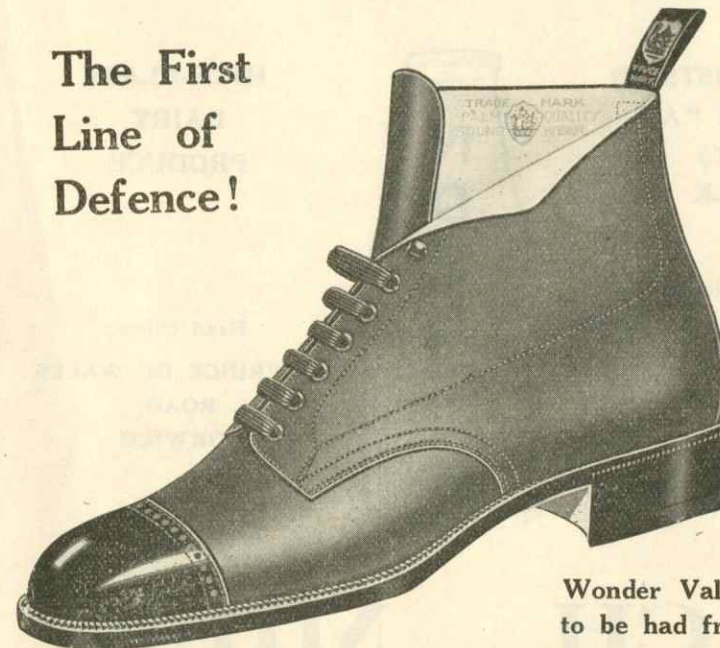
30-42, ST. GEORGE STREET,
NORWICH.

'Phone: 2603-4-5.

Grams: Guntons, Norwich 2603.

**The First
Line of
Defence!**

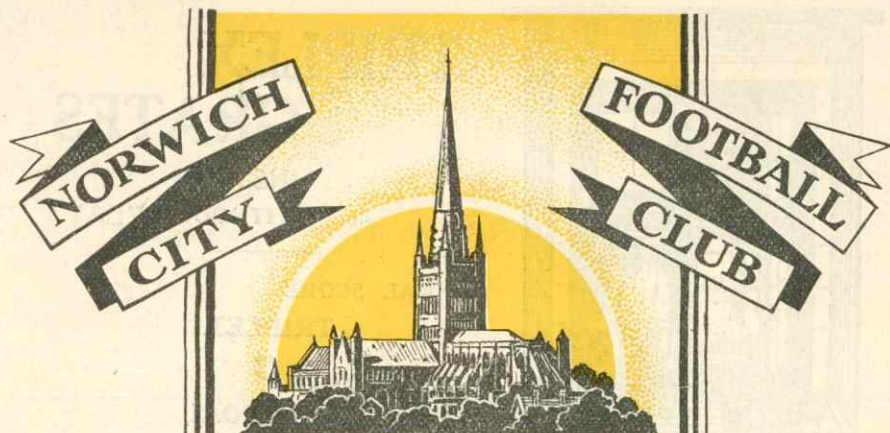
**Sound
Boots
or
Shoes**



Wonder Value
to be had from

WALTER LITTLE & SONS, LTD

NORWICH, WYMONDHAM, WATTON & DISS.



PROGRAMME

PURE NEW

**SPECIALISTS IN
GRADE "A"
(T.T.)
MILK**

Branches:

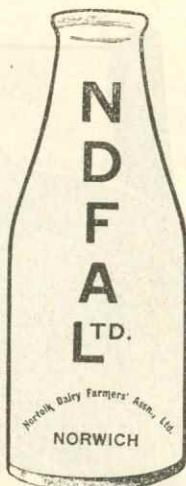
St. Stephens Street. Tel. 393.

St. Giles Street. Tel. 1066.

101, Prince of Wales Road.
Tel. 670.

Hellesdon Dairy. Tel. 1100.

Model Dairy, Gt. Yarmouth.
Tel. 502.



**HIGH-CLASS
DAIRY
PRODUCE**

Head Office:

**60, PRINCE OF WALES
ROAD,
NORWICH.**

Tel. 504.

RICH MILK