

Wednesday, September 13th, 1933 At SELHURST PARK

Crystal Palace

v.

Luton Town

Football League, Div. III

Kick-off 53.0 p.m.



Official
Programme



THE CAPTAIN

SPORTS AND ATHLETIC OUTFITTER

To Crystal Palace Football Club

FOOTBALLS

Captain 5-Star 22/6

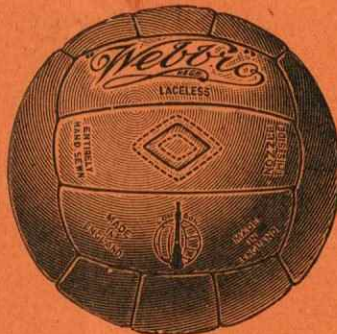
As used by the Crystal Palace Football Club for past 10 years.

Captain 4-Star 19/6

Captain 3-Star 17/6

Captain 2-Star 15/6

Captain 1-Star 12/6



All Requisites for

Football
Hockey
Tennis
Badminton
Darts
Scouts
Skating
Indoor Games,
&c.

SPECIAL TERMS TO CLUBS AND SCHOOLS

22 Station Road, West Croydon

PHONE: CROYDON 0663

BEST WAY TO SELHURST

CHEAP TICKETS will be issued in connection with all matches to be played on the Crystal Palace Football Ground, 1933-4

Return Fares to	Selhurst		Norwood Junction		Thornton Heath	
	1st Class	3rd Class	1st Class	3rd Class	1st Class	3rd Class
BALHAM	s. d. 1 3	s. d. 0 8	s. d. 1 3	s. d. 0 9	s. d. 1 0	s. d. 0 7
BIRKBECK	1 3	0 8	0 7	0 4
CARSHALTON	1 6	0 10	1 9	1 0
CARSHALTON BEECHES	1 3	0 8	1 3	0 9
CATERHAM	2 0	1 3	2 3	1 6
COULSDON NORTH	1 3	0 9	1 6	0 10
EAST CROYDON	0 3	0 2	0 5	0 3
GIPSY HILL	0 6	0 4
MITCHAM	1 3	0 8	1 3	0 9
MITCHAM JUNCTION	1 0	0 7	1 3	0 8
NORBURY	0 5	0 3
PENGE WEST	0 4	0 3
PURLEY	1 0	0 7	1 3	0 8
PURLEY OAKS	0 8	0 5	0 10	0 6
SOUTH CROYDON	0 6	0 4	0 8	0 5
STREATHAM	0 8	0 5
STREATHAM COMMON	0 6	0 4
SYDENHAM	0 6	0 4
TOOTING JUNCTION	1 3	0 8	1 3	0 9	1 0	0 7
TULSE HILL	1 0	0 7	1 0	0 7
WADDON	0 6	0 4	0 8	0 5
WALLINGTON	0 10	0 6	1 0	0 7
WEST CROYDON	0 3	0 2	0 5	0 3
WEST NORWOOD	0 8	0 5
WHYTELEAF	1 9	1 0	1 9	1 0

Children under 14, Half-Fare.

These tickets will be issued by any ordinary train between 12 noon and 3 p.m., except when matches are played in the morning or evening, when they will be available by any train within 2 hours of the advertised time of the kick-off. Return by ANY TRAIN on day of issue.

For further list of bookings apply to Southern Railway Stations or Agencies.

SOUTHERN ELECTRIC



President: F. J. NETTLEFOLD, Esq.
Directors: LOUIS T. BELLATTI (Chairman). R. S. FLEW (Vice-Chairman).
M. DERISLEY. F. GATES. H. WATSON HUMPHRIES.
Registered Offices: SELHURST PARK, LONDON, S.E.25.
Secretary-Manager: J. TRESADERN.

No. 8, Vol. XXIX.

WEDNESDAY, SEPTEMBER 13th, 1933

Official Programme.

Crystal Palace v. Luton Town

Published by the Crystal Palace Football Club, Ltd., who will welcome comments and matter for publication in the Official Programme. All communications to the Editor, Crystal Palace Football Club, Selhurst Park, S.E.25.

C.P.F.C., 1933-34

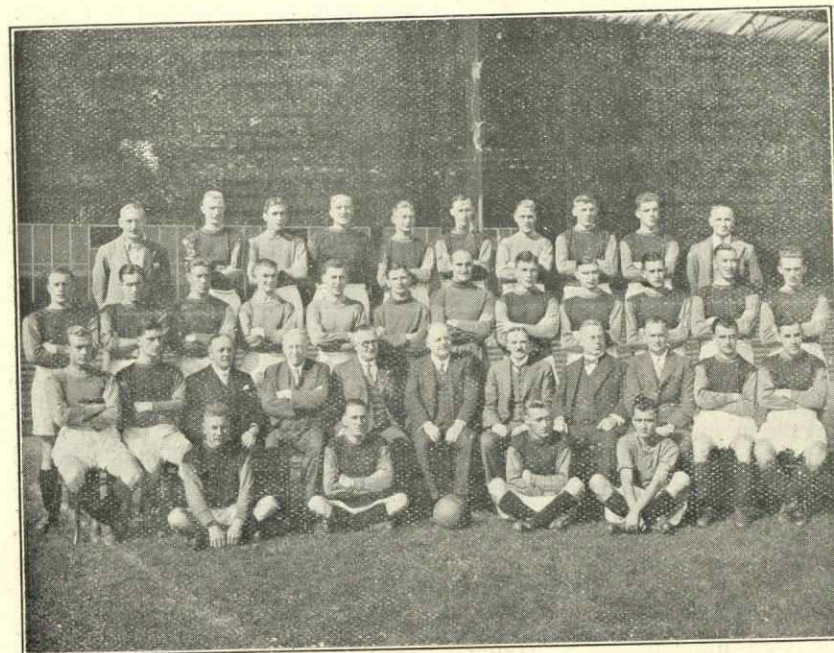


Photo by T. H. Everitt, 63 Anerley Road, S.E.19

This is a photograph of the personnel of the Crystal Palace Football Club for the season which has just commenced. Starting at the back row, and reading from left to right, they are: Collier (trainer) Norris, Parker, Hayward, Goddard, Earle, Clarke, Edwards, Sparke, Turnbull, (assistant trainer).—Rossiter, Brown, Finn, Ward, Tyler, Dunn, Beby, Nicholas, Parry, Barry, Wilde, Roberts.—Simpson, Rooke, Mr. F. E. Burrell, (assistant secretary), Mr. M. Derisley, Mr. R. S. Flew, (vice-chairman), Mr. L. T. Bellatti, (chairman), Mr. F. Gates, Mr. H. Watson-Humphries, Mr. J. Tresadern, (secretary-manager), Thompson, Manders.—Howe, Harry, Turner and Fyfe.



If things go on like this we shall soon be talking about the disadvantage of playing at home! Amongst the many little anomalies that make the game of football so attractive, is the fact that, so far, our record away from home is far more impressive than that for Selhurst Park. In fact, many clubs would be thankful to have done as well at home as we have done on opposition soil.

Our boys brought a valuable point back from Reading, on Saturday, by means of a goalless draw. This means that out of their first three away games they have obtained five points out of a possible six, have scored five goals, and have yet to see their own defence pierced.

YOU CAN NEVER TELL

This would indicate that we are invincible at home, yet our two home games have produced a victory and a defeat. In each game at least one goal has been scored against us and at the moment our goal average stands at three all. I wrote in last Wednesday's programme that we cannot take anything for granted—where would the charm of football be if we could? and although our defeat by Bristol Rovers was a shock, we can at least be philosophical over it.

We were unfortunate in having four players put temporarily out of action through injuries in the first week of the season and with one or two resuming their places on Saturday a distinct stiffening in our ranks was

the result. In view of this we are hoping to prove to Luton Town this evening that we can be masters in our own house as well as in other people's!

It should be a battle royal. Luton are only one point behind us—we are lying second to Norwich City, who enjoy a two-points lead and have yet to be beaten—and have shown an aptitude for goal scoring. Their total of sixteen is the highest in the Section, and they rattled up ten goals in one match.

BRIGHT AND BREEZY.

Conditions at Reading, on Saturday, were far too bright and breezy to please a footballer. A bright sun, a rock-like and uneven ground, and a powerful wind blowing clouds of dust straight down the pitch, all combined to render a player's lot, like that of Gilbert's policeman, "not a happy one." In the circumstances it was only to be expected that the football was on the scrappy side, the ball seeming to spend most of its time in going out of touch.

Defences were paramount in this game. In the early stages our boys were obviously unsettled by a ball that was bouncing like a Sorbo, but having got over this anxious period the defence settled down to play a solid game, so that even when Reading were attacking, as was frequently the case, they rarely looked like scoring.

A feature of the game was the excellent display given by Parry at left-back. This young player is showing signs of steady down into a fine back, and in Saturday's match he scarcely put a foot wrong, timing his tackles and interceptions to a

nicety. Considering the amount of attacking Reading did, they gave Dunn little trouble, but he extricated himself from one or two awkward situations with great presence of mind.

EXCITING MOMENT.

Perhaps the most exciting moment in the match was during the first half, when Dunn had the ball charged out of his hands by Oxberry, the Reading centre-forward. It rolled ominously towards the empty goal, but Dunn, racing after it, flung himself at full length and pushed the ball away from the route to goal. Hayward came up in time to clear and prevent a corner.

The best constructive football of the match came from the Palace at the beginning of the second half—it was noticeable that each side did better when against the wind—when some really neat attacking movements were carried out. On the whole, however, it was not a day for attackers with a ball that defied proper control, and one felt all the time that the defences had that little bit in hand which would result in a blank score sheet.

Barrie and Earle made their reappearance following their injuries in the first match of the season, and Barrie played a thoroughly sound game at centre-half. Harry, the "Peter Pan" of the Palace, made his first appearance for the league side this season, as did Thompson, the former Arsenal player, and both played quite well. Our boys met an old colleague in Doncaster who was at Selhurst Park last year. He played at outside-left for Reading in this match.

THE LUCK OF THE GAME.

Those who saw the London Combination match between our Reserves and Reading Reserves here last Saturday, saw an extraordinary game which they will not forget in a hurry. The visitors won by the only goal scored, yet in point of actual football skill our boys were superior, and the goal which gave Reading both points was one of those remarkable affairs that probably only occur once in a footballer's lifetime.

Howe, our outside-left, received the ball near the centre flag. He was challenged and, turning, took the ball down towards his own goal. Having got into this position he could not get out of it. The Reading man stuck to him like a leech until Howe was driven with the ball to the edge of his own team's penalty area. Then he lost it, the ball went to a Reading forward and a moment later was in the net.

As far as the ordinary run of the game went our boys had an unlucky day. Frequently they played excellent football, as opposed to the kick and rush game favoured by Reading, but something went wrong at the crucial moment. Time after time the Reading goal had hairbreadth escapes, but the ball just would not go into the net.

Some delightful play was served up by our half-backs, Finn, at centre-half, being outstanding. Ward and Edwards, on the flanks, were also good, but, if anything, they over-finessed. Not content with beating one or even two men, and then passing, they would sometimes lose the ball in attempting to beat a third. It is safe to say, however, that it will be a long time before our lads dominate the play as they did in this match and yet finish up on the losing side.

Luton Town

We want to assure Mr. Harold Wightman, the Secretary-Manager of Luton Town Football Club and his team of "Strawplaiters" of a very warm welcome to Selhurst Park this evening.

We recognise in Mr. Harold Wightman one who had a very honourable career as a player of our great game during a period of nearly twenty years. He wore the colours of Chesterfield at the beginning and at the end, and in between those of Notts Forest and Derby County.

With the last named club he was captain for several seasons, including their promotion years. He also had a term with Notts County as coach and assistant manager before going to Luton two seasons ago. It is generally thought that his encouragement and example had much to do with Luton Town's record run in the English Cup last season when they successfully fought their way into the sixth round, in spite of being drawn away from home in four of the six rounds. It is worth giving the list of their triumphs, especially as these have some connection with their coming to Selhurst Park this evening. The cup matches were—Luton Town 3, Kingstonians 0; Stockport County 2, Luton Town 3; Barnsley 0, Luton Town 2; Luton Town 2, Spurs 0; Halifax Town 0, Luton Town 2; Everton 6, Luton Town 0; and then Everton went on to win the Cup. These great feats were recognised and rewarded by the Football Association and they have exemption this season until the third round of the English Cup on January 13th. It is because they are certain to be engaged in a cup-tie on the second Saturday in January that their visit to Selhurst Park is arranged for to-night.

SIXTEEN GOALS from five matches—that is the record of our friends from Luton, when they appear at Selhurst Park this evening, just twice the number scored by our own lads. The other half of the story tells of nine goals conceded, which is, of course, just three times as many as given away by Captain Hayward and his good companions.

The results of matches played by Luton Town this season are as follows :

Home		Away		Home		Away
2—1	Charlton Athletic	0—2			Northampton T'n	3—2
	Queen's Park R.	1—2		10—2	Torquay United	

The following players are likely to represent the club to-night :—

MITTELL, JAS. LYONS (goalkeeper). Born at Merthyr Tydvil, and was assisting his parents in the management of an hotel and playing in goal for Penrhiwceiber as an amateur, when Rochdale took a fancy to him. Did very well there, and better still at Wigan, which was his next sojourn, but only for a little while. Birmingham next claimed him, and he stayed at St. Andrew's four seasons, being deputy to Hibbs, the international goalkeeper. 5ft. 11½ins.; 12st. 3lbs.

KINGHAM, RONALD (r. back). Born at Harpenden, and learned the game with Harpenden Town, and later with St. Alban's City, before signing for Luton Town nearly seven years ago. Soon won a regular place in the first eleven, and has been a first choice for five seasons. Is lithe and speedy, and has given really great service to his club. 5ft. 11ins.; 11st. 10lbs.

MACKEY, THOS. S. (l. back) was a great asset at full-back last season. He started training as usual, but returned home on August 5th and joined the police of his native county, Durham, after having re-signed for Luton. The club was faced with an unexpected problem, but footballers' agreements with clubs are not "scraps of paper," and Mackay has to devote his attention to defending Luton's rear for another season at least. One of the best backs in our division.

KEAN, FREDK. W. (r. half-back). Born at Sheffield, and has had a wonderful career before being captain of Luton Town. For several seasons regular member of Sheffield Wednesday, and made a name as pivot. Then transferred to Bolton Wanderers. Capped for England against Scotland, Wales, Ireland, and several Continental countries. Captained Football League team against Scottish League team. Holds 2nd Division Championship medal and F.A. Cup medal. Said to be playing as well as ever. 5ft. 8½ins.; 11st. 10lbs.

MCGINNIGLE, HUGH (c. half-back). Born at Bargeddie, Lanarkshire, and arrived at Luton after serving apprenticeship with Falkirk. Took a couple of seasons to reveal his true merit, but has been a fine pivot for the last two seasons. He is a clever exponent of defensive half-back play. Was a needle operator before joining Falkirk as a professional. 5ft. 10½ins.; 12st.

FRASER, CHAS. R. (l. half-back). This is a player they found in London, and he was born at Plaistow. He was schoolboy international against Scotland, and has engaged in all kinds of sport, winning seven boxing championships as a boy. Represented West Ham in various phases of junior sport, and is an all-round athlete. He is winning great popularity at Luton by his sportsmanship. 5ft. 11ins.; 11st. 10lbs.

PEASE, WM. (outside-right). Native of Leeds, and played for Leeds City 1918-19 as an amateur. Became a professional for Northampton in 1920; then transferred to Middlesbrough in 1926; capped same season; broke record for outside-right goals, scoring 24 in 30 games. In 1928-29 he scored 27. Holds two championship medals, International medal, and Professional v. Amateurs medal. Toured South Africa with F.A. Team, 1929, and received medal and cap. A really fine type of player. 5ft. 9½ins.; 11st. 10lbs.

HUTCHINSON, DAVID C. (inside-right), is a native of Shotts, Lanarkshire, who has had experience with Albion Rovers and Motherwell, and a term of four seasons with Carlisle United before going to Luton Town. 5ft. 8ins.; 11st.

TAIT, THOS. (centre-forward). Hetton-le-Hole, Co. Durham, his birthplace. Another schoolboy international, and very youthful when he signed professional forms for Southport. Goal-scoring proclivities attracted Manchester City, whom he served well before being transferred to Bolton Wanderers. Luton Town next claimed his services, and he is in his third season. Strong and energetic leader. 5ft. 10½ins.; 11st. 10lbs.

RENNIE, ANDREW (inside left). Born at Baillieston, Glasgow, and came to Luton as a centre-half nearly eight years ago. Had a quick rise into the first team, and played as pivot, but subsequently tried as a centre-forward, and in second season in that position headed list of League goal-scorers. Met with severe injury, and then became inside-left, where his success has been equal with that of previous positions. Shows initiative, and is a brilliant shot. 5ft. 11ins.; 12st. 4lbs.

PEARSON, GEO. W. (outside-left). Well-known to Londoners when with Chelsea. Born at West Stanley, and played for Hopson as a junior. Then with Annfield Plain before signing for Chelsea, with whom he was seven seasons. Only 5ft. 5ins. and 10½st. Seems too small for Luton to fancy, but we know him to be fast, tricky, and a sturdy opponent.

HORACE PAKES (trainer) may be seen on the field this afternoon, although we hope very little, but he deserves a brief mention on this page. Here we have a Lutonian who made the club a hobby for a quarter of a century before he became the first team trainer. Twenty-five years of loyal free-will service—then a call seven years ago to become trainer. Now he claims to feel younger than when he took on. Is popular with management and players, and only lives for the return of the club to the Second Division—for it was in those far-off days that he began his long term of voluntary service. We of Selhurst Park greet you right well, Pakes!

LONDON COMBINATION MATCH AT FULHAM.—Ten goals were banged in at Craven Cottage on Monday evening, in addition to two more that did not count. The few spectators on the stand were often arguing about the score in this game, goals came so thick and fast. Fulham, who fielded a strong reserve side, had the best of the argument when the final whistle blew, for John Dean, Fulham's Chairman, and his Manager James McIntyre were able to substantiate their point of view that Fulham really had claimed six of the ten goals. The defenders on both sides were below their usual standard and mistakes were frequent. Fulham had three class forwards, Richards, Rounce and Penn to take toll of these opportunities and some of their goals were extraordinary.

We fielded the following side—Bebby; Rossiter, Nicholas; Edwards, Finn, Ward; Clarke, May, Manders, Sparke, Parker.

Our four goals were scored by—Manders, Clarke, Sparke and May.

The Penalty Kick

An important ruling in regard to the penalty kick rule was adopted by the International Board at their recent annual meeting.

The text of the law was not altered but it was decided to add the following:—

"That a penalty kick may be awarded irrespective of the position of the ball if in play at the time of the offence."

This means that even if a player commits a punishable offence and the ball is in play in some other part of the field, the referee is at liberty to award a penalty kick if the offence takes place within the penalty area.

An incident of this character occurred in a Football League match

last season, when a full-back pushed a forward while standing in his penalty area while play was at the other end of the field. The referee saw the incident and immediately awarded a penalty.

Resuming our series of "Personalities," we shall be publishing in the near future photographs of:—

Sept. 16th William Collier, (Trainer)

Sept. 30th Bob Turnbull, (Asst. Trainer)

Oct. 14th Capt. J. Hayward

Oct. 28th F. Norris

Nov. 11th L. Thompson

"Be Pashent"

A Melbourne business house sent a polite reminder to a farmer, asking for a little on account, and this was the reply they received:

I got your letter about what I owe you. Now you be pashent. I aint forgot you, and I aint going to. Plees wait. When some fool pays me I pay you. If this was juggement day and you was no more prepared to meet your Maker than I am to meet your account you certingly would have to go to hell. Trusting you will do this. Yours truly.

Football League

	DIVISION III				Goals			
	P.	W.	D.	L.	F.	A.	Pts.	
Norwich City	5	4	1	—	15	5	9	
Crystal Palace	5	3	1	1	8	3	7	
Aldershot	5	2	3	—	6	3	7	
Charlton Athletic	5	3	1	1	12	7	7	
Cardiff City	5	3	1	1	9	6	7	
Luton Town	5	3	—	2	16	9	6	
Bristol Rovers	5	3	—	2	11	8	6	
Swindon Town	5	2	2	1	7	5	6	
Bournemouth	5	3	—	2	13	10	6	
Exeter City	5	3	—	2	9	9	6	
Queen's Park Rangers	5	3	—	2	7	7	6	
Clapton Orient	5	2	1	2	9	6	5	
Reading	5	2	1	2	7	9	5	
Gillingham	5	2	1	2	9	11	5	
Torquay United	5	2	1	2	9	15	5	
Coventry City	5	2	—	3	14	10	4	
Brighton & Hove	5	1	1	3	7	11	3	
Southend United	5	1	1	3	4	10	3	
Watford	5	1	—	4	7	11	2	
Northampton Town	5	—	2	3	5	11	2	
Newport County	5	—	2	3	4	9	2	
Bristol City	5	—	1	4	4	17	1	

Crystal Palace v. Luton Town

WEDNESDAY, SEPTEMBER 13th, 1933

CRYSTAL PALACE

(CARDINAL AND BLUE)

RIGHT

LEFT

1—Dunn

2—Hayward

3—Parry

4—Turner

5—Barrie

6—Wilde

7—Harry

8—Norris

9—Simpson

10—Roberts

11—Earle

REFEREE :

J. H. WHITTLE



LINESMEN :

RED FLAG—C. J. DEAN

BLUE FLAG—J. E. GOUGE

12—Pearson

13—Rennie

14—Bell

15—Martin

16—Pease

17—Fraser

18—McGinnigle

19—Kean

20—Mackey

21—Kingham

22—Mittell

LEFT

RIGHT

LUTON

Next Saturday at Selhurst Park

ENGLISH LEAGUE MATCH

Crystal Palace v. Watford

SATURDAY, SEPTEMBER 16th,

Kick-off 3.30 p.m.

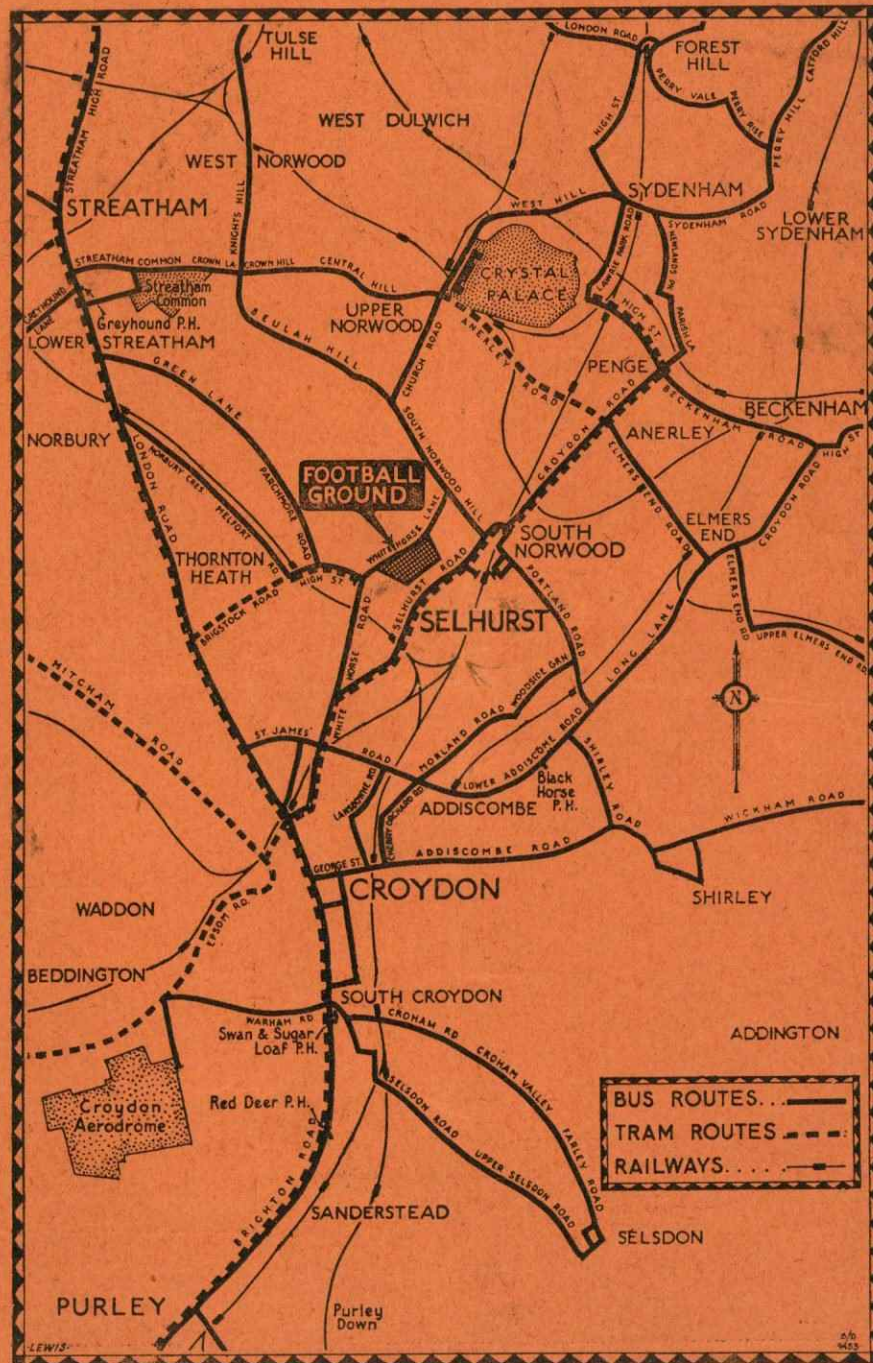
FOOTBALL LEAGUE FIXTURES, 1933-34.

LONDON COMBINATION FIXTURES, 1933-34.

Travel by Bus and Tram to Selhurst Park

Date	Opponents	1932-1933-34		Goals
		33	34	
		Rs.	For	Ag
Aug. 26	Southern United	2	1	4 0
30	Bristol Rovers	3	2	1 0
pt. 2	COVENTRY CITY	1	3	2 1
6	BRISTOL ROVERS	2	0	1 2
9	Reading	3	2	0 0
13	LUTON TOWN	3	0	
16	WATFORD	0	3	
23	Charlton Athletic	3	0	
30	BOURNEMOUTH	1	1	
7	Cardiff City	2	2	
14	EXETER CITY	3	3	
21	Bristol City	2	1	
28	CLAPTON ORIENT	0	1	
4	Swindon Town	5	0	
11	BRIGHTON & HOVE	1	3	
18	Aldershot	0	1	
25	1st Round English Cup	2	1	
2	Northampton	0	1	
9	TORQUAY UNITED	1	2	
16	Queen's Park R.	1	0	
23	NEWPORT COUNTY	0	0	
25	NORWICH CITY	4	0	
26	Norwich City	0	2	
30	SOUTHERN UNITED	4	1	
6	Coventry City	2	6	
13	3rd Round English Cup	1	1	
20	READING	0	1	
27	Watford	0	1	
3	CHARLTON ATH.	2	3	
10	Bournemouth	4	1	
17	CARDIFF CITY	1	1	
24	BRITISH ARMY BELGIAN ARMY	2	2	
3	BRISTOL CITY	1	4	
10	Clapton Orient	4	3	
17	SWINDON TOWN	2	1	
24	Brighton & Hove	5	1	
30	GILLINGHAM	3	0	
31	ALDERSHOT	0	2	
7	Gillingham	1	1	
14	Luton Town	2	0	
21	NORTHAMPTON	1	2	
28	Torquay United	0	1	
5	QUEEN'S PARK R.	3	1	
12	Newport County	3	1	

Date	Opponents	1932-1933-34		Goals
		33	34	
		Rs.	For	Ag
Aug. 26	SOUTHERN UNITED	2	1	0 2
28	Southampton	2	2	8 7
Sept. 2	Coventry City	1	2	0 0
4	SOUTHAMPTON	1	0	2 1
9	READING	7	1	0 1
11	Fulham	0	3	4 6
16	Watford	0	1	
23	CHARLTON ATH.	5	1	
27	Folkestone (F)	1	3	
30	West Ham United	1	3	
4	CHELSEA	0	2	
7	LEICESTER CITY	2	2	
11	Bournemouth	2	2	
14	Tottenham Hotspur	2	2	
21	QUEEN'S PARK R.	2	2	
28	Arsenal	2	5	
4	NORTHAMPTON	4	1	
11	Millwall	3	1	
18	LUTON TOWN	5	1	
25	Swansea Town	0	3	
2	BRIGHTON & HOVE	3	1	
9	Aldershot	3	1	
16	BOURNEMOUTH	1	2	
23	Bristol City	0	1	
25	Portsmouth	6	6	
26	PORTSMOUTH	6	6	
30	Southern United	1	2	
6	COVENTRY CITY	3	1	
13	FULHAM	2	0	
20	Reading	3	1	
27	WATFORD	3	0	
3	Charlton Athletic	1	1	
10	WEST HAM UN.	3	0	
17	Leicester City	4	2	
24	Queen's Park R.	2	2	
31	Chelsea	1	2	
7	ARSENAL	1	2	
10	Northampton	0	1	
17	MILLWALL	3	1	
24	Luton Town	2	5	
31	SWANSEA TOWN	2	0	
7	TOTTENHAM H.	1	3	
14	Brighton & Hove	3	2	
21	BRENTFORD	2	2	
28	ALDERSHOT	4	2	
5	Brentford	2	6	
12	BRISTOL CITY	2	1	



£1 FOR YOUR BOY OR GIRL.

We want your boys and girls to be interested in Crystal Palace, and have pleasure in announcing that a prize of £1 will be given for the best letter on the subject:

"WHY DADDY GOES TO FOOTBALL."

Parents must enclose a note that the child is not more than 14 years of age, and that the letter is the child's unaided work. Number of words not more than 100. Letter be to written on one side of the paper only, and giving full name, age and address of entrant.

Letters must be received not later than September 20th, addressed to the Editor. His decision will be final.

Winners name published on September 30th.

