



TRUE - FORM



FOOTWEAR

The Best Value
IN THE TOWN

== :: :: :: :: :: :: :: :: :: :: ==
BUY FROM THE ACTUAL MAKERS

LOCAL BRANCH:

44, GEORGE STREET.

Head Office and Factories, NORTHAMPTON.

The Fox Hotel

J.W. GREEN'S
FINE
ALES
AND
STOUTS



A.R.
Monument
WILL BE PLEASED
TO MEET
OLD & NEW
FRIENDS

PHONE 822

DUNSTABLE RD LUTON - CLOSE TO FOOTBALL GROUND

Charnley
and Sons

Qualified
Ophthalmic Opticians

SIGHT-TESTING
EYEGLASSES
SPECTACLES
- REPAIRS -

15, Wellington Street
LUTON

For First Class

TEAS
& REFRESHMENTS

after the match
call at the —

OAKEN
CASKET

184, Dunstable Rd.
QUICK SERVICE & QUALITY
CYCLES STORED

Luton Town Football & Athletic

CO., LTD.

PRESIDENT:
MR. HARRY ARNOLD, C.A., J.P.

DIRECTORS:
MESSRS. E. G. GIBBS (CHAIRMAN), E. MOUSE (VICE-CHAIRMAN),
WILLET BALL, J.P., S. H. GODFREY, C.A., H. R. HANSELL,
H. HEWSON, C. JEYES, C.C., S. WILKINSON.

SECRETARY-MANAGER: MR. HAROLD WIGHTMAN.

ASSISTANT SECRETARY: MR. A. E. WICKSON.

The League—Div. III.

LUTON v. READING.

Sat., March 18th.

Our visitors have had a very good run in the League, and they did pretty well out of the Cup Competition, for while they did not go as far as we, they had no fewer than seven "gates" to share. It was promptly said on Thursday, following the transfer of their clever centre-forward, Palethorpe, to Stoke, that Reading had given up hope of promotion, but the acquisition of Gamble suggests that they are holding on to the chance, for Gamble is a fine leader, and he will certainly be all out to prove that Reading have lost nothing by the change. Gamble has had a few games at Luton, and has done well. He has played here with Brentford and West Ham United, and he was a real trouble to our defence when we went to Aldershot this season.

If we win to-day, as we hope, then we are again all square with our old rivals. We have Kingham and Fraser ready again, and so the defence should be strengthened as compared with the game on Monday night, but Tait's injury was of such a character as to prevent him playing. However, Rennie is well again, and will lead the forwards, and we shall hope to see him touch his old form as a marksman. We won the corresponding game last season by six goals to one, but from that severe reverse Reading made a wonderful recovery, and were only just "pipped on the post" for promotion. If we were in their position we should think we had a good chance, and no doubt they feel that way and will go all out for success. This is our first Saturday home game since February 11th, and there should be a good crowd.

Next Saturday we have Watford Reserves here in a London Combination game, and there should be a good attendance, for our lads are keen to finish higher in the Combination. At Leicester on Wednesday they went down, but the forward changes were probably responsible in some measure.

Have you put in your diaries the dates of the re-arranged matches? If not, do so now. Here they are. Our League game with Newport County, postponed on account of the blizzard on February 25th, will be played at Newport on Thursday, April 6th.

Our League game with Watford will be played on April 26th, and we shall make the kick-off as late as possible, probably 6.15.

Our London Combination game with Aldershot is on Wednesday week, March 29th.

The annual meeting of shareholders for the election of directors takes place on Monday night.

THE LUTON BAND

Programme of Music

ONE STEP	- - - - -	"Where's Bill Bailey?"	- - - - -	Kennedy
WALTZ	- - - - -	"Pagan Moon"	- - - - -	Bryan
FOX TROT	- - - - -	"Sweethearts for Ever"	- - - - -	Friend
SPIRITUAL	- - - - -	"Round the Bend of the Road"	- - - - -	Lewis
MARCH	- - - - -	"Punchinello" (By Request)	- - - - -	Rimmer

See the Latest MARCONIPHONES

at

MASTERPHONE &

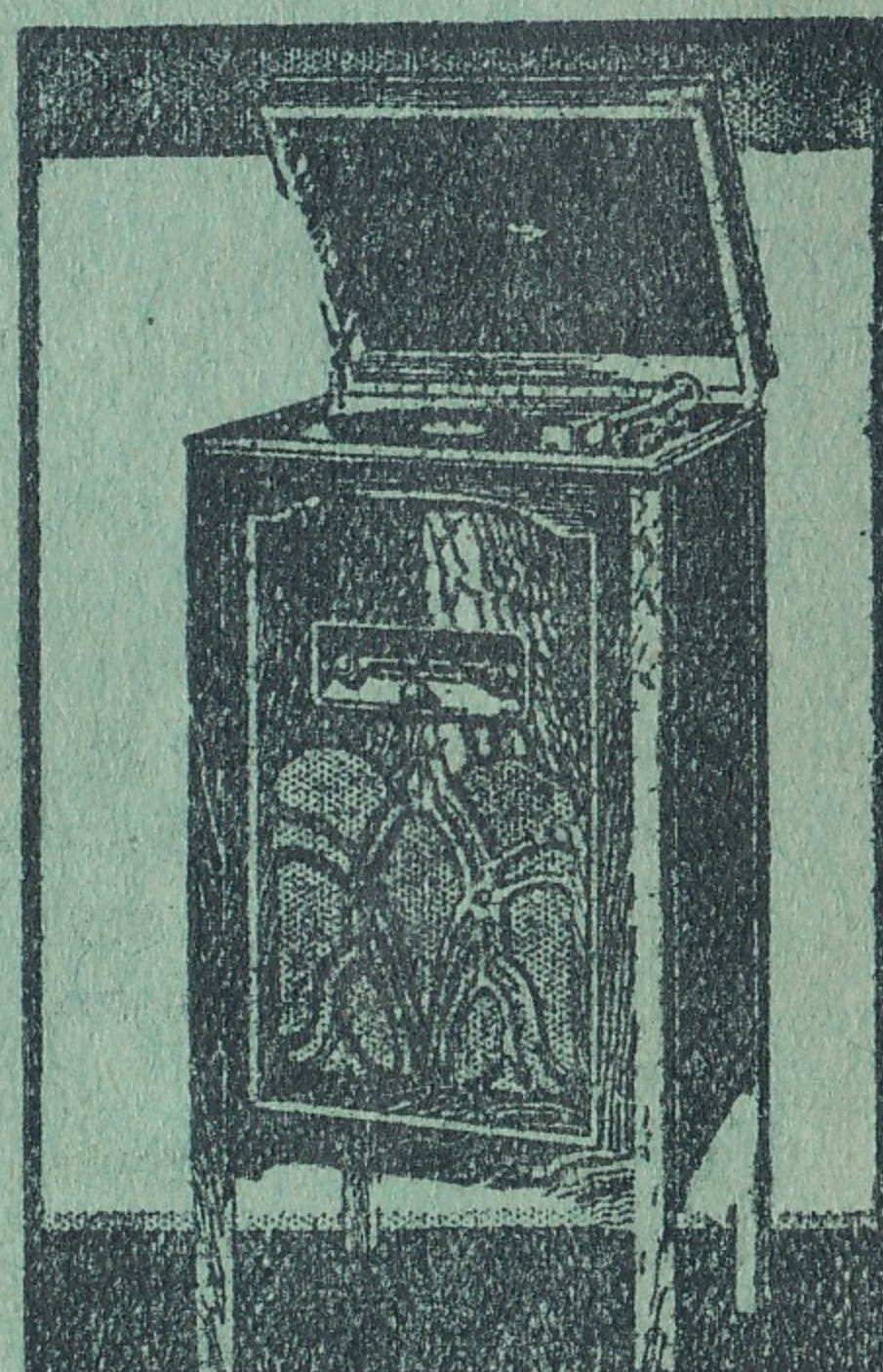
ELECTRIC Co., Ltd.

BURY PARK RD., LUTON

PHONE 1807

Model 330, as illustrated, has already established itself as the finest value in Radiograms in its class on the market. Combined in its handsome oak cabinet is a four-valve (inc. rect.) Receiver of unique design, a highly sensitive Moving Coil Speaker, and complete electrical gramophone equipment and pick-up—no winding.

CASH PRICE **32 Gns.** Or 67/- down and 12 monthly payments of 54/3.



Luton Town F.C. 1st.X1 Fixtures

The League, Div. III (Southern).

DATE	OPPONENTS	GROUND	F.	A.
Aug. 27	Northampton Town	H	2	1
" 29	Clapton Orient	A	0	0
Sept. 3	Bristol City	A	2	5
" 5	Clapton Orient	H	4	1
" 10	Coventry City	H	4	1
" 17	Brentford	A	0	1
" 24	Torquay United	H	2	1
Oct. 1	Exeter City	A	0	2
" 8	Gillingham	H	2	1
" 15	Newport	H	2	2
" 22	Watford	A	1	4
" 29	Cardiff City	H	8	1
Nov. 5	Reading	A	1	4
" 12	Norwich City	H	1	1
" 19	Brighton & H.A.	A	0	2
" 26	Kingstonians (F.A. Cup, 1st round)	H	2	2
" 30	Kingstonians (F.A. Cup Replay)	A	3	2
Dec. 3	Aldershot	A	2	2
" 10	Stockport (F.A. Cup, 2nd Round)	A	3	2
" 17	Southend U.	A	1	2
" 24	Crystal Palace	H	1	1
" 26	Bournemouth	A	2	0
" 27	Bournemouth	H	1	2
" 31	Northampton Town	A	0	1
Jan. 7	Bristol City	H	5	4
" 14	Barnsley (F.A. Cup, 3rd Round, Competition Proper)	A	0	0
" 18	Barnsley (F.A. Cup Replay)	H	2	0
" 21	Coventry City	A	0	4
" 28	Tottenham Hotspurs (F.A. Cup, 4th Round)	H	2	0
Feb. 1	Brentford	H	5	5
" 4	Torquay United	A	1	3
" 11	Exeter City	H	4	0
" 18	Halifax (F.A. Cup, 5th Round)	A	2	0
" 22	Gillingham	A	1	1
Mar. 4	Everton (F.A. Cup, sixth round)	A	0	6
" 11	Cardiff City	A	2	3
" 13	Bristol Rovers	H	1	1
" 18	Reading	H		
" 25	Norwich City	A		
April 1	Brighton & H.A.	H		
" 6	Newport County	A		
" 8	Bristol Rovers	A		
" 14	Swindon Town	H		
" 15	Aldershot	H		
" 17	Swindon Town	A		
" 22	Queen's Park R.	A		
" 26	Watford	H		
" 29	Southend United	H		
May 6	Crystal Palace	A		



PHONE:
288

PHONE:
288

LUTON to LONDON

DAY RETURN 2/6 SINGLE 1/6

CHILDREN 2/- RETURN — 1/6 SINGLE

WEEKLY SEASON TICKETS ISSUED—10/-

BOOKING OFFICE: 25, PARK STREET WEST, LUTON.

BOND'S
98/100 CASTLE ST.

for
Radio Gramophones
from 12 Gns.

CASH OR EASY TERMS.

Free Service after Purchase for full
period of Guarantee.

Accumulator Charging Service.

EFFICIENT Hire Car SERVICE

Phone 858

GARAGE :: PETROL, ETC.

MARES
SALE
TO-DAY

65-67, George St., and
187, Dunstable Rd., Luton

CHARLES MARES, LTD.

Luton Town F.C. 2nd.X1 Fixtures

London Combination.

DATE	OPPONENTS	GROUND	F.	A.
Aug. 27	Clapton Orient	A	1	1
" 29	Bristol City	H	2	6
Sept. 3	West Ham Utd.	H	1	2
" 5	Bristol City	A	1	1
" 10	Fulham	A	1	5
" 12	Southampton	H	3	0
" 17	Brentford	H	1	2
" 19	Southampton	A	1	0
" 24	Northampton T.	A	2	3
" 26	Reading	H	6	1
Oct. 1	Swansea Town	H	0	2
" 8	Coventry City	A	2	4
" 15	Aldershot	A	1	1
" 20	Cambridge U. (F.)	A	5	0
" 22	Millwall	H	8	0
" 29	Chelsea	A	0	3
Nov. 5	Tottenham H.	H	0	0
" 12	Watford	A	1	3
" 19	Brighton & H.A.	H	1	1
Dec. 3	Portsmouth	H	3	1
" 10	Queen's Park R.	A	1	2
" 17	Southend Utd.	H	3	0
" 24	Crystal Palace	A	1	5
" 26	Arsenal	H	1	0
" 27	Arsenal	A	1	3
" 31	Clapton Orient	H	8	1
Jan. 7	West Ham Utd.	A	0	3
" 14	Charlton Athletic	H	5	1
" 21	Fulham	H	0	2
" 28	Brentford	A	0	5
Feb. 4	Northampton Town	H	2	2
" 11	Swansea Town	A	1	3
" 18	Coventry City	H	4	0
Mar. 4	Bedford Town (Beds. Premier Cup—Final)	H	4	0
" 8	Reading	A	4	2
" 11	Chelsea	H	5	0
" 16	Leicester City	A	0	2
" 18	Tottenham H.	A		
" 25	Watford	H		
" 29	Aldershot	H		
April 1	Brighton & H.A.	A		
" 8	Leicester City	H		
" 15	Portsmouth	A		
" 18	Millwall	A		
" 22	Queen's Park Rangers	H		
" 29	Southend Utd.	A		
May 6	Crystal Palace	H		

ASK FOR
**J. W. GREEN'S
X.X.X.X. STINGO**

An invigorating Ale of generous strength and excellent quality

When you're on a good thing, stick to it.

J. W. GREEN LTD., THE BREWERY, LUTON
TELEPHONE: LUTON 1454

**ALMA
KINEMA LUTON**

TO-NIGHT—

CONSTANCE CUMMINGS and
LEE TRACY in

INVISIBLE POWER

Also TIM McCOY in

The WESTERN CODE

ERNEST GAUTIER at the Mighty
Compton Organ.

**THE GREATEST SHOW
FOR MILES!**

JANES BROS.

ENGINEERS TO THE
HAT TRADE SINCE

1888

High Town Road - - Luton
PHONE 242

PALACE

TO-NIGHT—

THE MIDSHIPMAID

Featuring JESSIE MATHEWS. ALSO

WAY OF LIFE

LUTON TOWN.

COLOUR—WHITE.

RIGHT

Harford

Kingham

Mackey

Kean

McGinnigle

Fraser

Mills

Hutchison

Rennie

Alderson

Roberts

Referee—
Mr. J. M. Wiltshire
(Sherborne).



Linesmen—
Mr. F. G. Crabb, New South-
gate (red flag); Mr. A. T.
Norman-Polley, East Ham
(blue flag).

Chandler

Oxberry

Gamble

Eaton

Ritchie

Barley

Allan

Johnson

Richardson

Rowe

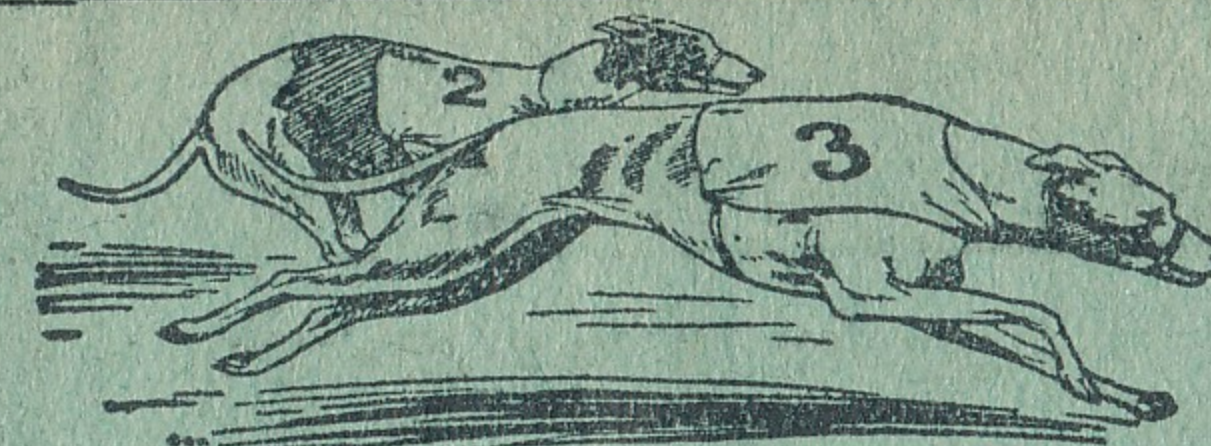
Mellors

READING.

COLOURS—BLUE & WHITE.

LEFT

RIGHT



Proprietors:
Luton & Dunstable
Greyhound Racing Club, Ltd.
Room 4,
Old G.P.O. Buildings,
Cheapside, Luton.
Phone: 366.

GREYCYING

LUTON - Dunstable Rd. Track

EVERY WEDNESDAY AND SATURDAY EVENING
AT 7.30 P.M.

AND SUNDAYS AT 11.0 A.M. AND 6.30 P.M.

ADMISSION: 1/4, 2/6, incl. Tax & Card. Free Car Park

**EMPIRE
BURY PARK RD**

TO-NIGHT—

**THE MAID of
the MOUNTAINS**

NANCY BROWN and
HARRY WELCHMAN with all Star Cast.

NEXT WEEK—

"SAY IT WITH MUSIC."
JACK PAYNE and his FAMOUS BAND.

**LUTON'S MOST
EXCLUSIVE CINEMA**

TAILORING FOR ALL

The largest selection of Made-to-Measure and
Ready-to-Wear OVERCOATS and SUITS in
LUTON. Prices within reach of all.

Quality, Value and Satisfaction Guaranteed.

Your inspection invited without obligation to
purchase.

JOHN BRIGHT
OUTFITTERS LIMITED

"THE BELL," GEORGE ST., LUTON.

The Tailor that suits you best

Here for
SPECIAL BARGAINS

LOOK

GENT'S

Solid Gold STRAP WATCH

15-Jewel lever movement in latest square shapes. This
is an exceptional offer from a large cash purchase.
Worth £3 3s. od., and carries our usual Full Guarantee.

F. HINDS, Ltd.

JEWELLERS
EST. 1856

5, PARK SQUARE, LUTON

BRANCHES LONDON AND PROVINCES

(Up to preceding Game).

Name.	3rd Div.	L.C.	F.	F.A. Cup.
Alderson	4	5	—	1
Bailey	—	1	1	—
Brown	—	6	1	—
Corkindale	—	5	1	—
Diaper	—	1	—	—
Fraser	2	—	—	—
J. Hoar	—	1	4	—
Hutchison	5	11	—	—
Kean	2	—	—	1
McGinnigle	—	—	—	1
Mills	9	—	—	—
Nelson	5	5	1	1
Pacey	—	1	—	—
Parish	—	7	—	—
Rennie	5	1	—	5
Roberts	2	—	—	—
Rowe	2	7	—	—
Tait	18	—	—	5
Weaver	—	8	5	—
Whalley	1	11	—	—
Rockford (Portsm'th) own goal	—	1	—	—
	—	—	—	—
	—	—	—	—
	—	—	—	—
	—	—	—	—



Today's Half-time Scores

The half-time scores are given in two lists. Copy the first list and then watch the Board for the second list, which will be given immediately.

CLUBS		Scores.	CLUBS		Scores.
First named is home team.			First named is home team.		
FIRST LIST.			SECOND LIST.		
F.A. CUP (Semi-Final).					
A	Derby v. Manchester City	0 1	A	Notts Co. v. Manchester Utd.	
B	Everton v. West Ham	1 1	B	Port Vale v. Spurs	
LEAGUE.					
C	Birmingham v. Chelsea	0 0	C	Southampton v. Oldham	
D	Blackburn v. Bolton	2 2	D	Swansea v. Stoke	
E	Leeds v. Liverpool	1 0	E	Bournemouth v. Brighton	
F	Wednesday v. Leicester	2 1	F	Bristol C. v. Southend	
G	Sunderland v. Huddersfield		G	Coventry v. Palace	
H	W. Brömwich v. Portsmouth	1 1	H	Exeter v. Cardiff	
K	Bradford v. Charlton	2 0	K	Northampton v. Q. P. Rangers	
L	Bury v. Preston		L	Swindon v. Bristol R.	
M	Chesterfield v. Forest	1 0	M	Hartlepoons v. Chester	
N	Lincoln v. Burnley		N	Hull v. Accrington	

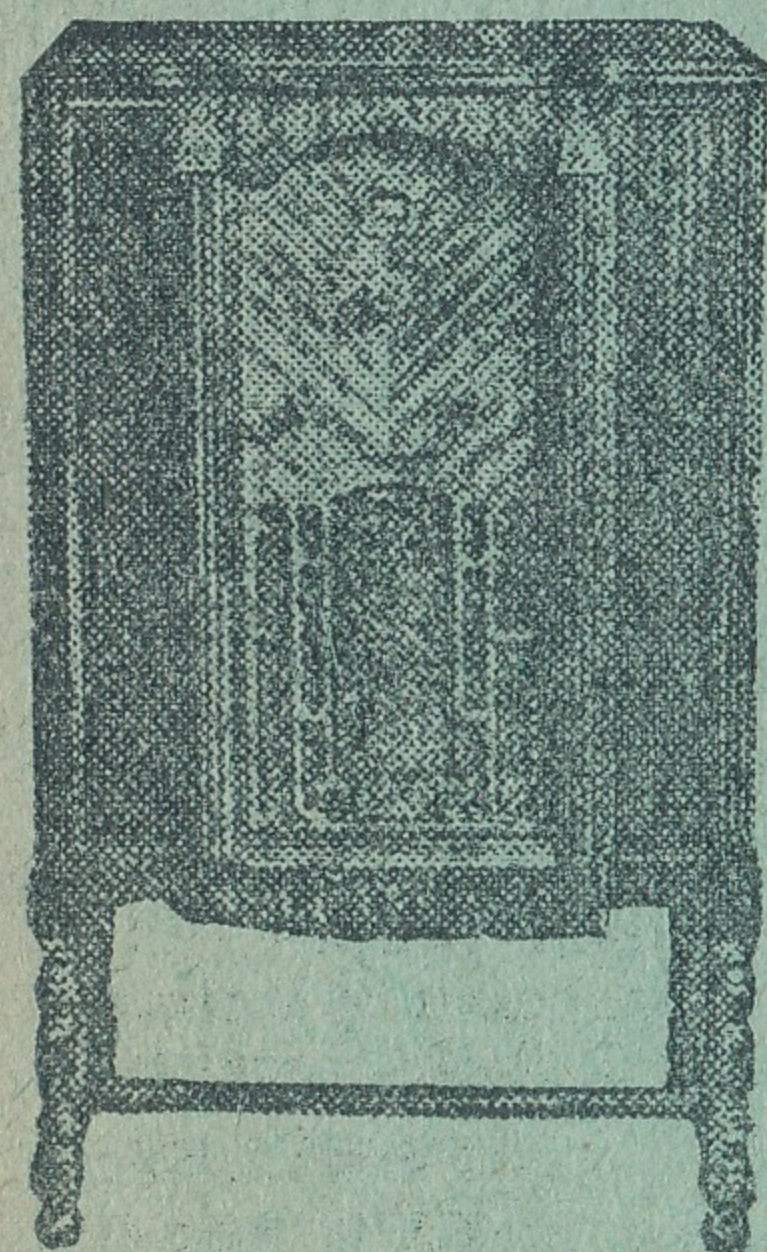
NOTE.—The letter in the Programme corresponds with the letter on the Board—thus A o-i means that the first-named Club has scored o and their opponents 1.

HEAR THEM
FREE TODAY
IN YOUR
OWN HOME

PHILCO

BALANCED UNIT RADIO

THE MOST
SENSATIONAL
PERFORMANCE
IN RADIO . . .



MODEL 56 LOWBOY
22 GNS.

The most amazing value in radio—the New Philco 5-valve balanced superhet for 16 gns. ! No other set at the price comes near it for tone, for range, for selectivity. See it and hear it—free—to-day !

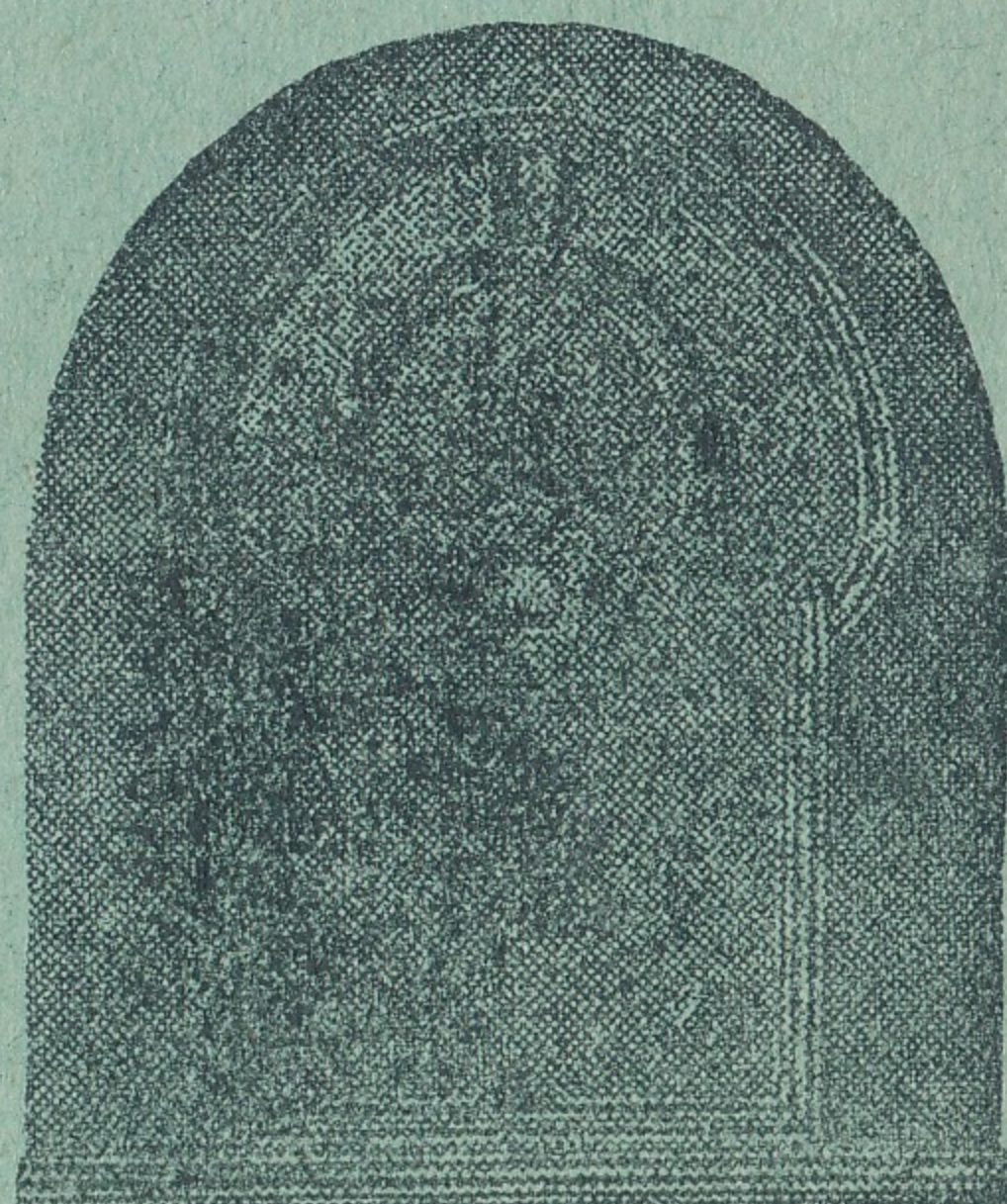
EASY TERMS ARRANGED

ACCREDITED DEALER—

BROWN

36 Park St, Luton

PHONE 1809



MODEL 56 BABY GRAND
16 GNS.

BEST AFTER ALL TESTS

ASK
FOR
G. K.
AT
YOUR
CLUB



DELIVERIES
IN ALL
DISTRICTS
SEVERAL
TIMES
DAILY

G.K.

4½d.

LARGE BOTTLES

8d.

FLAGONS

1/3

G.K. MILD

4d.

7d.

1/1

**SOLE
LOCAL
AGENTS**

SOLE LOCAL AGENTS **H. INWOOD, LTD.,** SOLE LOCAL AGENTS

NEW BEDFORD ROAD

42. CHAPEL STREET

108, DUNSTABLE ROAD

'Phone 241.

'Phone 1425.

'Phone 241.

GRAND THEATRE · LUTON

EDWARD DUNSTAN and HIS COMPANY
Present

MON., TUES., WED. & SAT.—

The NAUGHTY WIFE

A sparkling Comedy by FREDERICK JACKSON.

THURS. ONLY, by special request—

Mary Queen of Scots

FRI. NIGHT ONLY—Twice Nightly prices
SHAKESPEARE'S

TWELFTH NIGHT

FOR
MEN ONLY
TO-MORROW
at 3 p.m.

AT

ST. MATTHEW'S MEN'S SERVICE

SPEAKER:

The Rev. C. J. Hancock

ALL SUPPORTERS WELCOMED

Entertainments in Luton

GRAND THEATRE

THIS WEEK'S PLAYS

For to-night's performances at 6.45 and 9. Mr. Edward Dunstan is reviving "David Garrick" as the costume play of the week, and the Shakespearean play to-morrow is to be "Othello." The latter should have special interest for those who have been earlier in the week, or who are going on Saturday, when the last two performances of "Carnival" are given. In "Carnival," much is heard about "Othello," for the third act is laid behind the stage of a theatre, where it is being played. "Carnival" is a play with a fine dramatic story laid in a Venetian setting, and Mr. Dunstan plays the Matheson Lang part of "Silvio Steno." Very appropriately before the play Mr. Davidson sings the prologue to "Pagliacci."

NEXT WEEK

For four nights next week, "The Naughty Wife" will be staged, and this brilliant comedy has all the fun required by those who want to laugh heartily when they go to a theatre.

The costume play for Thursday will be "Mary Queen of Scots," and for Friday's Shakespearean night, "Twelfth Night" has been selected.

EMPIRE

Wholesome humour, romance and fine singing make splendid entertainment of "The Maid of the Mountains" at the Empire to-night. It has an all-star cast. Other attractions are a comedy, "Heavens, My Husband"; an interest film, "Mammals of the Deep"; a Technicolour revue, "C'est Paris"; and the Ideal Cinemagazine. Jack Payne and his band will appear all next week in "Say it with Music," and Raymond Massey in the milder mystery, "The Face at the Window."

PALACE

Jessie Matthews has established herself as a screen favourite, and in "The Midshipmaid," which is full of fun and laughs, she has a strong supporting cast. "Way of Life" is an intensely human second feature, with Loretta Young as the heroine, and George Brent as the man who eventually wins her. Next week, Sydney Howard in "It's a King," and "The World, the Flesh, and the Devil."

ALMA

"Invisible Power," showing for the rest of the week, deals with the adventures of a political reformer who, although subjected to ridicule and unseated from Congress, remains unbroken in spirit and brings about the downfall of the political bosses. Lee Tracy is the reformer and Constance Cummings has the leading feminine role. In "The Western Code," Tim McCoy features in an adventurous role as a disguised Texas Ranger.

WELLINGTON

"THE LAW OF THE TONG"

A sinister story of modern Chinatown is being shown at the Wellington Cinema to-night, when "The Law of the Tong," starring Phyllis Barrington, Jason Robards and John Harron, heads the programme. Lovely little Joan, hostess in Madam Duval's taxi dance hall on the outskirts of Chinatown, is annoyed while hurrying to work one night by a pair of drunks. Jerry, a handsome newcomer to the district, rescues her, and learning where she works, follows her, and makes her realise that her job is a bad one. What happens next makes this a thrilling blend of mystery and romance. Also being shown to-night is "Sporting Justice," with Jack Perrin and his wonder horse, Starlight.

"THE GIRL IN THE CAB"

On Monday comes, "The Girl in the Cab," with James Rennie at the head of the cast and Olive Borden and Judith Wood in leading feminine roles. It is a baffling mystery, with a crooked lawyer murdered in broad daylight, a daringly different story.

Also being shown on Monday is Rex Bell in "The Man from Arizona."

WELLINGTON CINEMA

TO-NIGHT—

An exposure of modern Chinatown

The Law of the Tong

Featuring JASON ROBARDS
and PHYLLIS BARRINGTON.

Also JACK PERRIN in
SPORTING JUSTICE

MONDAY NEXT—

A modern mystery thriller.

JAMES RENNIE and
OLIVE BORDEN in

The Girl in the Cab

Supported by REX BELL in

The MAN from ARIZONA

Matinees Mon., Wed., Fri. & Sat. at 2 p.m.

Luton

Football Supporters Club.

JOIN TO-DAY

Fill up this Membership Form now and send, together with your Subscription, to the Registrar (Mr. Denis Wright, Cromwell Hill, Luton), or the Hon. Secs., Messrs. Gilder and Hunt, "News" Office, Luton.

I desire to be enrolled as a member of the above Club, and have pleasure in forwarding my subscription for the year ending August 31st, 1933. (The minimum subscription is 1/- annually).

Name.....

Address.....

.....

How They Stand in the League

DIVISION III (SOUTH)

	P.	W.	L.	D.	F.	A.	P.
Brentford	30	20	5	5	66	34	45
Norwich	32	17	4	11	70	39	45
Exeter	31	18	6	7	71	36	43
Reading	30	17	5	8	85	48	42
Coventry	32	16	13	3	87	60	35
Palace	32	14	11	7	59	49	35
Northampton	31	13	11	7	66	46	33
Bristol Rovers	30	12	10	8	50	44	32
Brighton	30	14	12	4	48	51	32
Southend	33	12	13	8	55	66	32
Watford	31	11	12	8	49	50	30
Torquay	31	10	12	9	52	55	29
Bournemouth	33	9	13	11	50	69	29
Gillingham	31	11	14	6	49	49	28
Rangers	31	10	13	8	58	66	28
LUTON TOWN	29	9	12	8	55	56	26
Bristol City	30	9	13	8	62	68	26
Aldershot	29	10	13	6	46	54	26
Cardiff	31	9	16	6	50	78	24
Orient	32	7	15	10	47	75	24
Newport	33	7	19	7	43	88	21
Swindon	31	7	18	6	51	88	20

LONDON COMBINATION

	P.	W.	L.	D.	F.	A.	P.
Brentford	37	26	5	6	116	46	58
Fulham	37	25	5	7	89	40	57
West Ham	36	22	6	8	116	48	52
Arsenal	36	24	9	3	115	46	51
Swansea	35	20	9	6	65	46	46
Palace	35	19	10	6	86	64	44
Spurs	33	19	10	4	92	64	42
Leicester	36	16	13	7	95	90	39
Portsmouth	36	13	12	11	65	65	37
Rangers	36	14	17	5	71	88	33
Chelsea	37	14	18	5	56	83	33
Watford	32	14	14	4	77	88	32
Coventry	35	13	17	5	82	71	31
Reading	37	12	18	7	79	102	31
LUTON TOWN	35	12	17	6	71	67	30
Charlton	33	11	15	7	60	71	29
Brighton	35	12	18	5	65	81	29
Millwall	35	7	13	15	59	83	29
Southend	34	13	19	2	68	80	28
Northampton	32	11	15	6	52	72	28
Bristol C.	35	9	20	6	58	88	24
Orient	37	6	22	9	45	98	21
Aldershot	34	7	22	5	43	90	19
Southampton ...	33	7	21	5	39	97	19

THE LAST PART

Send the parts of your magazine to us. A good book is worth good binding. We pride ourselves on the strength and handsome appearance of our work.

from **4/-** per volume

GIBBS, BAMFORTH & Co.

"Luton News" Buildings

LUTON.

Telephone 1121.

WARREN'S IRELESS SERVICE STANDS SUPREME

CONSULT THEM AT

70, WELLINGTON ST.
LUTON.

W. F. BING

Dyer & Cleaner

70, Stuart St. - Luton

Cleaning Suits,
Costumes and Coats
a speciality

from **3/6**

Suits, Coats and
Costumes Sponged
and Pressed

1/6

Mourning Orders Dyed in 24 hrs.
VALET SERVICE

Your Own Judgment Will Tell You—

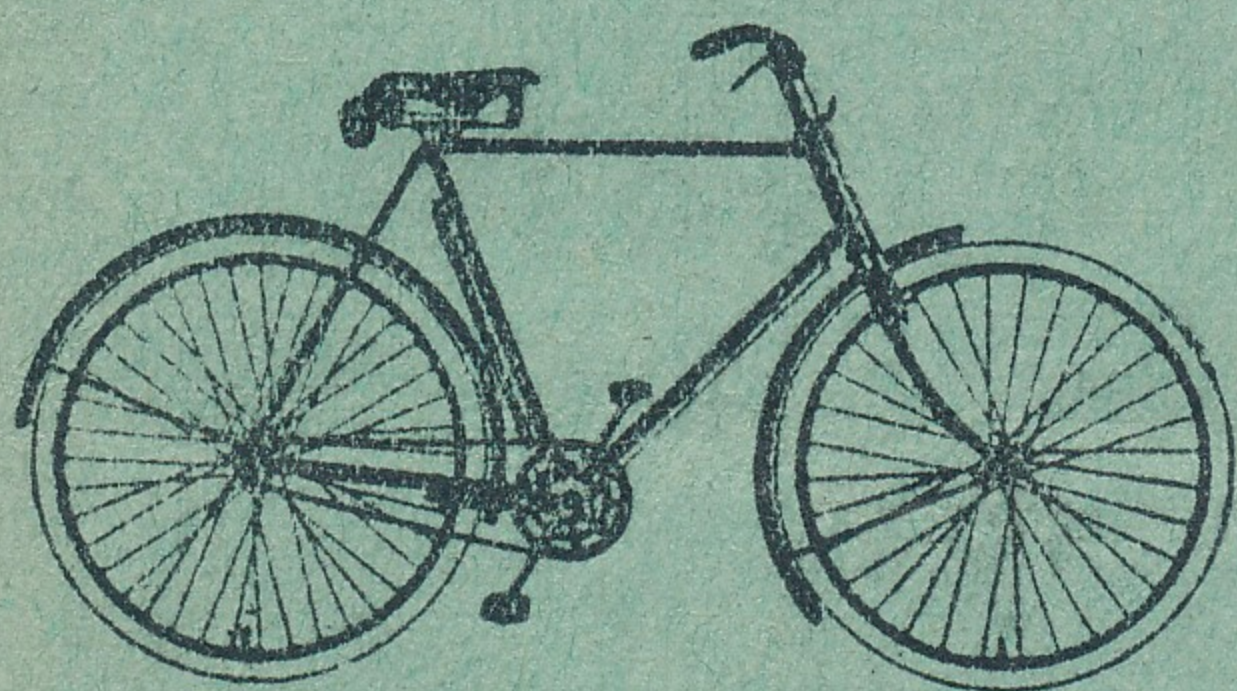
why New Hudson is THE BEST BICYCLE FOR YOU—directly you start examining it at Partridge's.

And as soon as you ride it—your judgment will be confirmed. You'll appreciate (by comparison) that never before has rider-comfort been so assiduously studied.

Every New Hudson Bicycle is the master-product of master-craftsmen with over 50 years' experience in the manufacture of QUALITY BICYCLES.

Small wonder that countless thousands of discriminating cyclists prefer NEW HUDSON—for "EXCELLENT" REASONS!

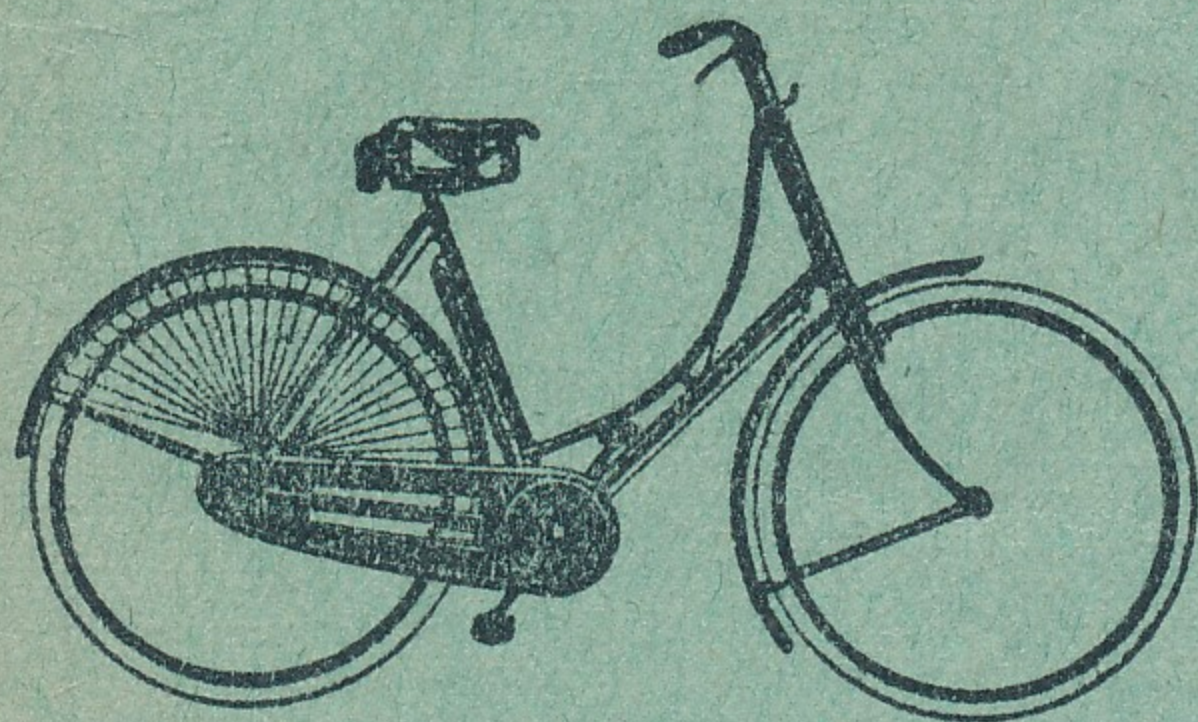
NEW-HUDSON



MODELS

from

£4/19/6



EASY TERMS
ARRANGED

LUTON'S LEADING CYCLE AGENTS

A. G. Partridge & Co

PHONE 234

10-12 CHAPEL ST.
LUTON

NEW HUDSON DEPOT