



TRUE - FORM



FOOTWEAR

The Best Value

IN THE TOWN

=====
BUY FROM THE ACTUAL MAKERS

LOCAL BRANCH:

44, GEORGE STREET.

Head Office and Factories, NORTHAMPTON.

The Fox Hotel

J.W. GREEN'S
FINE
ALES
AND
STOUTS



A.R.
Monument
WILL BE PLEASED
TO MEET
OLD & NEW
FRIENDS

PHONE 822

DUNSTABLE RD LUTON - CLOSE TO FOOTBALL GROUND

Charnley
and Sons

Qualified
Ophthalmic Opticians

SIGHT-TESTING
EYEGLASSES
SPECTACLES
- REPAIRS -

15, Wellington Street
LUTON

For First Class

TEAS
& REFRESHMENTS

after the match
call at the —

OAKEN
CASKET

184, Dunstable Rd.
QUICK SERVICE & QUALITY
CYCLES STORED

Luton Town Football & Athletic

CO., LTD.

PRESIDENT:
MR. HARRY ARNOLD, C.A., J.P.

DIRECTORS:
MESSRS. E. G. GIBBS (CHAIRMAN), E. MOUSE (VICE-CHAIRMAN),
WILLET BALL, J.P., S. H. GODFREY, C.A., H. R. HANSELL,
H. HEWSON, C. JEYES, C.C., S. WILKINSON.

SECRETARY-MANAGER: MR. HAROLD WIGHTMAN.

ASSISTANT SECRETARY: MR. A. E. WICKSON.

The League—Div. III.

LUTON v. BRENTFORD.

Wed., Feb. 1st.

Our first word must be of heartiest congratulation to the boys for their magnificent victory on Saturday. It was thoroughly earned, without a suggestion of a fluke at all, and in spite of the fact that some of the critics would rather run down the losers than praise the winners, we pay tribute to the 'Spurs for a good sportsmanlike game, and the genuine expression of goodwill and compliment they paid to the victors.

We wish the 'Spurs the best of good luck in their quest for promotion, for they proved that they could take defeat with good grace, and such a team deserves to prosper.

Fate has not been kind to us in the draw for the next round, but we have no need to fear the result, whether it be at Chester or Halifax.

We have received many messages of congratulation, all of which we appreciate very much. If Mr. Wightman cannot reply to all individually, especially from our regular supporters, we are sure they will accept this paragraph as an acknowledgment.

To-day we have to play Brentford, and for them, even more than for us, the match holds big things. They lost the leadership to Exeter City on Saturday, and a win to-day would restore them. They have a strong side, and Bain is down to resume after absence through injury.

We are fielding our Cup team, and we hope to win, for we are in need of points.

The ground is bound to be in a bad state after the thaw, but we should have a good match.

On Saturday we have Northampton here in a London Combination game. Kick-off at 3 o'clock.

FULL REPORT

OF BRENTFORD AND COMMENTS ON THE 'SPURS MATCH

IN TO-MORROW'S

"Luton News"

See the Latest MARCONIPHONES
at

MASTERPHONE &

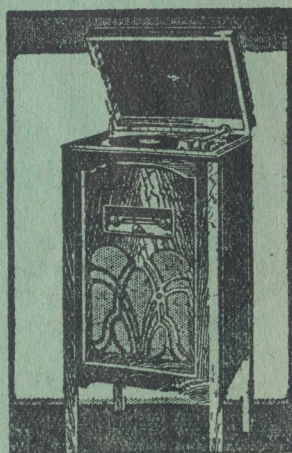
ELECTRIC Co., Ltd.

BURY PARK RD., LUTON

PHONE 1807

Model 330, as illustrated, has already established itself as the finest value in Radiograms in its class on the market. Combined in its handsome oak cabinet is a four-valve (inc. rect.) Receiver of unique design, a highly sensitive Moving Coil Speaker, and complete electrical gramophone equipment and pick-up—no winding.

CASH PRICE **32 Gns.** Or 67/- down and 12 monthly payments of 54/3.



Luton Town F.C. 1st.XI Fixtures

The League, Div. III (Southern).

DATE	OPPONENTS	GROUND	F.	A.
Aug. 27	Northampton Town	H	2	1
" 29	Clapton Orient	A	0	0
Sept. 3	Bristol City	A	2	5
" 5	Clapton Orient	H	4	1
" 10	Coventry City	H	4	1
" 17	Brentford	A	0	1
" 24	Torquay United	H	2	1
Oct. 1	Exeter City	A	0	2
" 8	Gillingham	H	2	1
" 15	Newport	H	2	2
" 22	Watford	A	1	4
" 29	Cardiff City	H	8	1
Nov. 5	Reading	A	1	4
" 12	Norwich City	H	1	1
" 19	Brighton & H.A.	A	0	2
" 26	Kingstonians (F.A. Cup, 1st round)	H	2	2
" 30	Kingstonians (F.A. Cup Replay)	A	3	2
Dec. 3	Aldershot	A	2	2
" 10	Stockport (F.A. Cup, 2nd Round)	A	3	2
" 17	Southend U.	A	1	2
" 24	Crystal Palace	H	1	1
" 26	Bournemouth	A	2	0
" 27	Bournemouth	H	1	2
" 31	Northampton Town	A	0	1
Jan. 7	Bristol City	H	5	4
" 14	Barnsley (F.A. Cup, 3rd Round, Competition Proper)	A	0	0
" 18	Barnsley (F.A. Cup Replay)	H	2	0
" 21	Coventry City	A	0	4
" 28	Tottenham Hotspurs (F.A. Cup, 4th Round, Competition Proper)	H	2	0
Feb. 4	Torquay United	A		
" 11	Exeter City	H		
" 18	Gillingham	A		
" 25	Newport	A		
Mar. 4	Watford	H		
" 11	Cardiff City	A		
" 18	Reading	H		
" 25	Norwich City	A		
April 1	Brighton & H.A.	H		
" 8	Bristol Rovers	A		
" 14	Swindon Town	H		
" 15	Aldershot	H		
" 17	Swindon Town	A		
" 22	Queen's Park R.	A		
" 29	Southend United	H		
May 6	Crystal Palace	A		

PHONE:
288



PHONE:
288

LUTON 2/6 LONDON

Any Day

Any Time

SALOON COACHES FOR PRIVATE HIRE
FOOTBALL PARTIES CATERED FOR

BOOKING OFFICE: 25, PARK STREET WEST, LUTON.

BOND'S
98/100 CASTLE ST.

for

Radio Gramophones
from 12 Gns.

CASH OR EASY TERMS.

Free Service after Purchase for full
period of Guarantee.

Accumulator Charging Service.

EFFICIENT Hire Car SERVICE

'Phone 858

GARAGE :: PETROL, ETC.

OVERCOAT
DAYS ARE!
HERE AGAIN!

Newest Models

All Sizes

2 gns. to 5½ gns.

SEE SPECIAL WINDOW DISPLAYS
AT

CHARLES MARES,
65-67, George St., and
187, Dunstable Rd., Luton

CHARLES MARES, LTD.

Luton Town F.C. 2nd.XI Fixtures

London Combination.

DATE	OPPONENTS	GROUND	F.	A.
Aug. 27	Clapton Orient	A	1	1
" 29	Bristol City	H	2	6
Sept. 3	West Ham Utd.	H	1	2
" 5	Bristol City	A	1	1
" 10	Fulham	A	1	5
" 12	Southampton	H	3	0
" 17	Brentford	H	1	2
" 19	Southampton	A	1	0
" 24	Northampton T.	A	2	3
" 26	Reading	H	6	1
Oct. 1	Swansea Town	H	0	2
" 8	Coventry City	A	2	4
" 15	Aldershot	A	1	1
" 20	Cambridge U. (F.)	A	5	0
" 22	Millwall	H	8	0
" 29	Chelsea	A	0	3
Nov. 5	Tottenham H.	H	0	0
" 12	Watford	A	1	3
" 19	Brighton & H.A.	H	1	1
Dec. 3	Portsmouth	H	3	1
" 10	Queen's Park R.	A	1	2
" 17	Southend Utd.	H	3	0
" 24	Crystal Palace	A	1	5
" 26	Arsenal	H	1	0
" 27	Arsenal	A	1	3
" 31	Clapton Orient	H	8	1
Jan. 7	West Ham Utd.	A	0	3
" 14	Charlton Athletic	H	5	1
" 21	Fulham	H	0	2
" 28	Brentford	A	0	5
Feb. 4	Northampton Town	H		
" 11	Swansea Town	A		
" 18	Coventry City	H		
" 25	Aldershot	H		
Mar. 8	Reading	A		
" 11	Chelsea	H		
" 16	Leicester City	A		
" 18	Tottenham H.	A		
" 25	Watford	H		
April 1	Brighton & H.A.	A		
" 8	Leicester City	H		
" 15	Portsmouth	A		
" 18	Millwall	A		
" 22	Queen's Park Rangers	H		
" 29	Southend Utd.	A		
May 6	Crystal Palace	H		

ASK FOR
**J. W. GREEN'S
X.X.X.X. STINGO**

An invigorating Ale of generous strength and excellent quality

When you're on a good thing, stick to it.

J. W. GREEN LTD., THE BREWERY, LUTON
TELEPHONE: LUTON 1454

PALACE

TO-NIGHT—

Luton v. 'Spurs Cup Tie

Come and see yourself in the Films.



Proprietors:
Luton & Dunstable
Greyhound Racing Club, Ltd.
Room 4,
Old G.P.O. Buildings,
Cheapside, Luton.
Phone: 366.

GREYCYING

LUTON - Dunstable Rd. Track

EVERY WEDNESDAY AND SATURDAY EVENING
AT 7.30 P.M.

AND SUNDAYS AT 11.0 A.M. AND 6.30 P.M.

ADMISSION: 1/4, 2/6, incl. Tax & Card. Free Car Park

ALMA

KINEMA LUTON

TO-NIGHT—

TULLULAH BANKHEAD and GARY COOPER in

Devil and the Deep

Also TIM McCOY in

Fighting Marshall

Ernest Gautier at the Grand Compton Organ

**the GREATEST SHOW
FOR MILES!**

LUTON TOWN.
COLOUR—WHITE.

RIGHT

1 Harford
2 Kingham
3 Mackey
4 Kean
5 McGinnigle
6 Fraser
7 Mills
8 Nelson
9 Tait
10 Alderson
11 Roberts

Referee—
Mr. A. J. Brown, Bristol.

12 Crompton
13 Scott
14 Holliday
15 Walsh
16 Hopkins
17 J. C. Burns
18 Bain
19 Ware
20 Hodge
21 Stevenson
22 Baker

LEFT

LEONARD BROTHERS
A 5 GNS. SUIT FOR 50!

BRENTFORD.
COLOURS—RED & WHITE.

RIGHT

EMPIRE

BURY PARK RD

ALL NEXT WEEK—

Open each day at 12.30.
1 p.m. 3.30 p.m. 6 p.m. 8.30 p.m.

GRETA GARBO, JOHN BARRYMORE,
JOAN CRAWFORD, WALLACE BEERY,
LIONEL BARRYMORE, and all Star
Cast, in

GRAND HOTEL

The greatest attraction in stage or screen history.

LUTON'S MOST EXCLUSIVE CINEMA

JANES BROS.

ENGINEERS TO THE
HAT TRADE SINCE

1888

High Town Road - - Luton

PHONE 242

TAILORING FOR ALL

The largest selection of Made-to-Measure and Ready-to-Wear OVERCOATS and SUITS in LUTON. Prices within reach of all.

Quality, Value and Satisfaction Guaranteed.

Your inspection invited without obligation to purchase.

JOHN BRIGHT
OUTFITTERS LIMITED

"THE BELL," GEORGE ST., LUTON.

The Tailor that suits you best

Here for
SPECIAL BARGAINS

LOOK

GENT'S

Solid Gold STRAP WATCH

15-Jewel lever movement in latest square shapes. This is an exceptional offer from a large cash purchase. Worth £3 3s. od., and carries our usual Full Guarantee.

F. HINDS, Ltd.

JEWELLERS
EST. 1856

5, PARK SQUARE, LUTON

BRANCHES LONDON AND PROVINCES

THE SEASON'S GOAL SCORERS

(Up to preceding Game).

Name.	3rd Div.	L.C.	F.	F.A. Cup.
Alderson	3	5	—	1
Bailey	—	1	1	—
Brown	—	6	1	—
Corkindale	—	5	1	—
Fraser	2	—	—	—
J. Hoar	—	1	—	—
Hutchison	4	2	—	—
Kean	2	—	—	1
McGinnigle	—	—	—	1
Mills	7	—	—	—
Nelson	2	5	1	—
Pacey	—	1	—	—
Parish	—	7	—	—
Rennie	5	1	—	5
Roberts	1	—	—	—
Rowe	2	5	—	—
Tait	12	—	—	4
Weaver	—	5	1	—
Whalley	1	10	—	—
Rockford(Portsm'th)own goal	—	1	—	—

"A FINE PAIR OF BACKS"

—Vide LONDON PRESS



KINGHAM



MACKEY

HEAR THEM
FREE TODAY
IN YOUR
OWN HOME

PHILCO

BALANCED UNIT RADIO

THE MOST
SENSATIONAL
PERFORMANCE
IN RADIO . . .

The most amazing value in radio—the New Philco 5-valve balanced superhet for 16 gns. ! No other set at the price comes near it for tone, for range, for selectivity. See it and hear it—free—to-day !

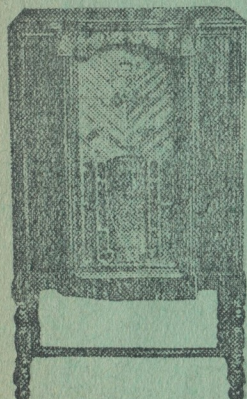
EASY TERMS
ARRANGED

ACCREDITED DEALER—

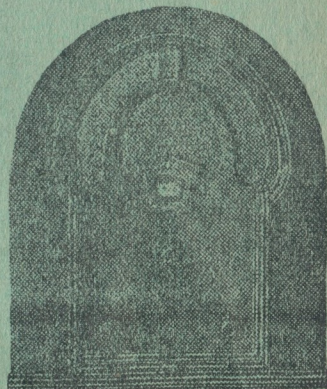
BROWN

36 Park St, Luton

PHONE 1809



MODEL 56 LOWBOY
22 GNS.



MODEL 56 BABY GRAND
16 GNS.

BEST AFTER ALL TESTS

ASK
FOR
G. K.
AT
YOUR
CLUB



DELIVERIES
IN ALL
DISTRICTS
SEVERAL
TIMES
DAILY

G.K.	4½d.	8d.	1/3
G.K. MILD	4d.	7d.	1/1

SOLE LOCAL AGENTS
H. INWOOD, LTD.,
NEW BEDFORD ROAD 42, CHAPEL STREET 103, DUNSTABLE ROAD
'Phone 241. 'Phone 1425. 'Phone 241.

GRAND

THEATRE • LUTON

ALL NEXT WEEK—

WELCOME RETURN OF
Edward Dunstan
and His
**Repertory
Company**

See Bills and Press announcements for full
details.

St. Matthew's Church

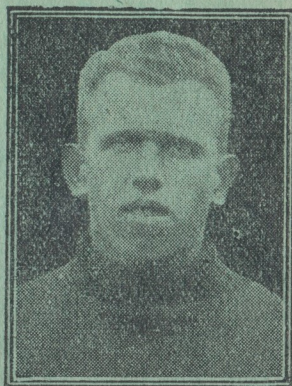
**POPULAR
SERVICE**

for

MEN

Every Sunday Afternoon

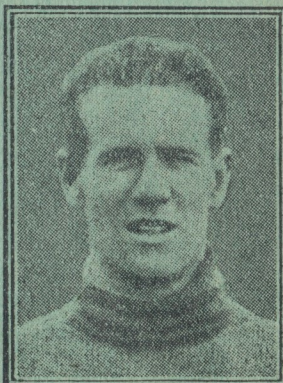
PORTRAIT



ALDERSON



FRASER



HARFORD

GALLERY



TAIT



KEAN



MCGINNIGLE

WELLINGTON
CINEMA

TO-MORROW—

Overshadows any Picture ever made.

Dirigible

STARRING

JACK HOLT
AND
RALPH GRAVES

Matinees Friday and Saturday at 2 o'clock.

Luton
Football Supporters Club.

JOIN TO-DAY

Fill up this Membership Form now and
send, together with your Subscription,
to the Registrar (Mr. Denis Wright,
Cromwell Hill, Luton), or the Hon.
Secs., Messrs. Gilder and Hunt,
"News" Office, Luton.

I desire to be enrolled as a member
of the above Club, and have pleasure
in forwarding my subscription for the
year ending August 31st, 1933.
(The minimum subscription is 1/-
annually).

Name.....

Address.....

How They Stand in the League

DIVISION III (SOUTH)

	P	W	L	D	F	A	P
Brentford	23	16	4	3	44	24	55
Exeter	24	15	5	4	57	28	54
Reading	25	13	3	7	64	33	53
Norwich	24	11	4	9	46	29	51
Northampton	24	10	8	6	50	35	26
Palace	25	10	9	6	43	40	26
Brighton	24	11	9	4	36	40	26
Coventry	24	11	10	3	62	46	25
Watford	25	10	10	5	41	41	25
Southend	24	9	8	7	40	48	25
Bournemouth	26	8	9	9	41	51	25
Bristol R.	23	10	9	4	41	39	24
Gillingham	24	10	12	2	38	34	22
Rangers	24	9	11	4	46	49	22
Aldershot	24	9	11	4	37	44	22
Torquay	24	7	10	7	45	44	21
LUTON TOWN	23	8	10	5	41	43	21
Orient	25	6	10	9	42	56	21
Bristol City	24	7	12	5	46	52	19
Cardiff	24	6	14	4	39	61	16
Swindon	23	6	13	4	42	68	16
Newport	26	4	15	7	32	66	15

LONDON COMBINATION

	P	W	L	D	F	A	P
Fulham	29	20	3	6	73	31	46
Brentford	28	19	4	5	81	37	43
Arsenal	28	20	6	2	97	32	42
West Ham	28	17	5	6	92	37	40
Swansea	29	17	8	4	56	39	38
Palace	29	15	9	5	74	58	35
Spurs	27	15	10	2	74	56	32
Portsmouth	28	11	7	10	59	46	32
Leicester	30	13	12	5	76	78	31
Coventry	28	12	14	2	72	67	26
Reading	29	10	13	6	62	80	26
Charlton	26	10	11	5	49	55	25
Rangers	29	10	14	5	54	70	25
Chelsea	28	10	13	5	43	64	25
Millwall	29	6	11	12	50	70	24
LUTON TOWN	28	9	14	5	55	53	23
Watford	25	10	12	3	60	60	23
Northampton	25	9	12	4	40	58	22
Brighton	27	9	14	4	43	60	22
Southend	27	10	16	1	52	68	21
Bristol City	28	7	16	5	49	71	19
Orient	29	5	16	8	39	75	18
Aldershot	29	6	19	4	40	81	16
Southampton	25	5	16	4	31	70	14

YOU ARE KNOWN BY YOUR NOTEPAPER ::

Your notepaper is your emissary into an unknown world—the forerunner of an interview, the first impression on a man when you write for a job.

Let his first impression of you be one of respect and admiration, brought in by the use of good stationery.

Let your letter paper
be better paper.

GIBBS, BAMFORTH & Co.
Manchester Street - - - Luton

WARREN'S
WIRELESS
SERVICE
STANDS
SUPREME

CONSULT THEM AT
70, WELLINGTON ST.
LUTON.

W. F. BING
Dyer & Cleaner
70, Stuart St. - Luton

Cleaning Suits,
Costumes and Coats
a speciality
from **3/6**

Suits, Coats and
Costumes Sponged
and Pressed
1/6

Mourning Orders Dyed in 24 hrs.
VALET SERVICE

Your Own Judgment Will Tell You—

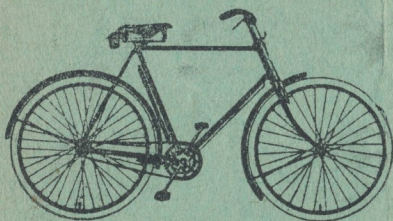
why New Hudson is THE BEST BICYCLE FOR YOU—directly you start examining it at Partridge's.

And as soon as you ride it—your judgment will be confirmed. You'll appreciate (by comparison) that never before has rider-comfort been so assiduously studied.

Every New Hudson Bicycle is the master-product of master-craftsmen with over 50 years' experience in the manufacture of QUALITY BICYCLES.

Small wonder that countless thousands of discriminating cyclists prefer NEW HUDSON—for "EXCELLENT" REASONS!

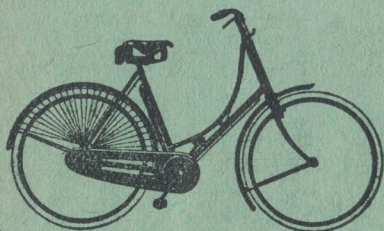
NEW-HUDSON



MODELS

from

£4/19/6



EASY TERMS
ARRANGED

LUTON'S LEADING CYCLE AGENTS

A. G. Partridge & Co

PHONE 234

10-12 CHAPEL ST.
LUTON

NEW HUDSON DEPOT