



TRUE - FORM



FOOTWEAR

The Best Value
IN THE TOWN

=====

BUY FROM THE ACTUAL MAKERS

LOCAL BRANCH:

44, GEORGE STREET.

Head Office and Factories, NORTHAMPTON.

The Fox Hotel

J.W. GREEN'S
FINE
ALES
AND
STOUTS



A.R.
Monument
WILL BE PLEASED
TO MEET
OLD & NEW
FRIENDS

PHONE 822

DUNSTABLE RD LUTON - CLOSE TO FOOTBALL GROUND

Charnley
and Sons

Qualified
Ophthalmic Opticians

SIGHT-TESTING
EYEGLASSES
SPECTACLES
- REPAIRS -

15, Wellington Street
LUTON

For First Class

TEAS
& REFRESHMENTS

after the match
call at the —

OAKEN
CASKET

184, Dunstable Rd.
QUICK SERVICE & QUALITY
CYCLES STORED

Luton Town Football & Athletic

CO., LTD.

PRESIDENT:
MR. HARRY ARNOLD, C.A., J.P.

DIRECTORS:
MESSRS. E. G. GIBBS (CHAIRMAN), E. MOUSE (VICE-CHAIRMAN),
WILLET BALL, J.P., S. M. GODFREY, C.A., H. R. HANSELL,
H. HEWSON, C. JEYES, C.C., S. WILKINSON.

SECRETARY-MANAGER: MR. HAROLD WIGHTMAN.

ASSISTANT SECRETARY: MR. A. E. WICKSON.

F.A. CUP (4th Round)

LUTON v. TOTTENHAM H.

Sat., Jan. 28th.

So thoroughly have the newspapers covered the story of the 'Spurs and the Town in Cup-ties, that it is needless to recount, romantic reading though the tales make.

We heartily welcome our old friends, and the worst we wish them is that they will be eliminated from the Cup Competition this afternoon, but obtain consolation in the shape of promotion to the First Division at the end of the season.

Despite the keenness of modern Cup-tie games, they are not so fiercely fought as they were, and this game should be a proof that even Cup-ties can provide good football.

We hope to pull through, for the issue is on the turf and not in cold print, and in spite of all the predictions made by the multitude of writers, many of them here to-day, we feel that we have quite as good a chance against the 'Spurs as Walsall had against the Arsenal.

Of course we lament the absence of Andrew Rennie, but he has been ill enough during this week to have made his appearance in this tie almost impossible, even if the F.A. had not said he must be excluded.

According to the names provided by the 'Spurs, they will have Levene at centre-half instead of Rowe.

We hope for a really good sporting tussle, and if the 'Spurs are in the hat on Monday, we shall wish them all good luck. They have had two draws away from home, and if they succeed in two such matches, they deserve a run at White Hart Lane.

If this game reaches a definite result to-day, we are at home on Wednesday to Brentford for the League game postponed from to-day. We should like to see as big a crowd as we have this afternoon, and if the lads win they will deserve it. We would point out that our League position is not so bad as it appears to be, for we are three home games in hand.

We would like at this point to express our appreciation of the way the 'Spurs have fallen in with our work during the last fortnight, and especially their willingness to change their colours to red, for this will help spectators to follow the game much better.

The LUTON BAND will commence playing at 1.30, and their programme will consist of POPULAR SONGS and DANCE NUMBERS.

FULL LENGTH REPORT

OF
TO-DAY'S CUP TIE
WITH
PHOTOGRAPHS
IN TO-NIGHT'S

Beds & Herts
Saturday Telegraph

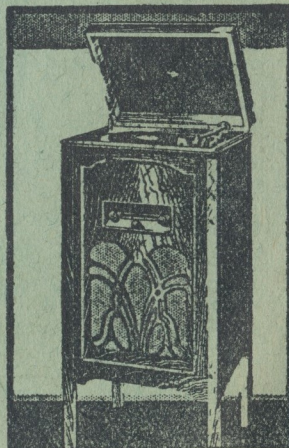
See the Latest MARCONIPHONES
at

**MASTERPHONE &
ELECTRIC Co., Ltd.**
BURY PARK RD., LUTON

PHONE 1807

Model 330, as illustrated, has already established itself as the finest value in Radiograms in its class on the market. Combined in its handsome oak cabinet is a four-valve (inc. rect.) Receiver of unique design, a highly sensitive Moving Coil Speaker, and complete electrical gramophone equipment and pick-up—no winding.

CASH PRICE **32 Gns.** Or 67/- down and 12 monthly payments of 54/3.



Luton Town F.C. 1st.X1 Fixtures

The League, Div. III (Southern).

DATE	OPPONENTS	GROUND	P.	A.
Aug. 27	Northampton Town	...	H	2
" 29	Clapton Orient	...	A	0
Sept. 3	Bristol City	...	A	2
" 5	Clapton Orient	...	H	4
" 10	Coventry City	...	H	4
" 17	Brentford	...	A	0
" 24	Torquay United	...	H	2
Oct. 1	Exeter City	...	A	0
" 8	Gillingham	...	H	2
" 15	Newport	...	H	2
" 22	Watford	...	A	1
" 29	Cardiff City	...	H	8
Nov. 5	Reading	...	A	1
" 12	Norwich City	...	H	1
" 19	Brighton & H.A.	...	A	0
" 26	Kingstonians (F.A. Cup, 1st round)	...	H	2
" 30	Kingstonians (F.A. Cup Replay)	...	A	3
Dec. 3	Aldershot	...	A	2
" 10	Stockport (F.A. Cup, 2nd Round)	...	A	3
" 17	Southend U.	...	A	1
" 24	Crystal Palace	...	H	1
" 26	Bournemouth	...	A	2
" 27	Bournemouth	...	H	1
" 31	Northampton Town	...	A	0
Jan. 7	Bristol City	...	H	5
" 14	Barnsley (F.A. Cup, 3rd Round, Competition Proper)	...	A	0
" 18	Barnsley (F.A. Cup Replay)	...	H	2
" 21	Coventry City	...	A	0
" 28	Tottenham Hotspurs (F.A. Cup, 4th Round, Competition Proper)	...	H	...
Feb. 4	Torquay United	...	A	...
" 11	Exeter City	...	H	...
" 18	Gillingham	...	A	...
" 25	Newport	...	A	...
Mar. 4	Watford	...	H	...
" 11	Cardiff City	...	A	...
" 18	Reading	...	H	...
" 25	Norwich City	...	A	...
April 1	Brighton & H.A.	...	H	...
" 8	Bristol Rovers	...	A	...
" 14	Swindon Town	...	H	...
" 15	Aldershot	...	H	...
" 17	Swindon Town	...	A	...
" 22	Queen's Park R.	...	A	...
" 29	Southend United	...	H	...
May 6	Crystal Palace	...	A	...

PHONE:
288



PHONE:
288

LUTON 2/6 LONDON

Any Day

Any Time

SALOON COACHES FOR PRIVATE HIRE
FOOTBALL PARTIES CATERED FOR

BOOKING
OFFICE:

25, PARK STREET WEST, LUTON.

BOND'S

98/100 CASTLE ST.

for

Radio Gramophones

from 12 Gns.

CASH OR EASY TERMS.

Free Service after Purchase for full
period of Guarantee.

Accumulator Charging Service.

EFFICIENT Hire Car SERVICE

'Phone 858

GARAGE :: PETROL, ETC.

OVERCOAT DAYS ARE HERE AGAIN!

Newest Models

All Sizes

2 gns. to 5½ gns.

SEE SPECIAL WINDOW DISPLAYS
AT

CHARLES MARES,
65-67, George St., and
187, Dunstable Rd., Luton

CHARLES MARES, LTD.

Luton Town F.C. 2nd.XI Fixtures

London Combination.

DATE	OPPONENTS	GROUND	F.	A.
Aug. 27	Clapton Orient	A	1	1
" 29	Bristol City	H	2	6
Sept. 3	West Ham Utd.	H	1	2
" 5	Bristol City	A	1	1
" 10	Fulham	A	1	5
" 12	Southampton	H	3	0
" 17	Brentford	H	1	2
" 19	Southampton	A	1	0
" 24	Northampton T.	A	2	3
" 26	Reading	H	6	1
Oct. 1	Swansea Town	H	0	2
" 8	Coventry City	A	2	4
" 15	Aldershot	A	1	1
" 20	Cambridge U. (F.)	A	5	0
" 22	Millwall	H	8	0
" 29	Chelsea	A	0	3
Nov. 5	Tottenham H.	H	0	0
" 12	Watford	A	1	3
" 19	Brighton & H.A.	H	1	1
Dec. 3	Portsmouth	H	3	1
" 10	Queen's Park R.	A	1	2
" 17	Southend Utd.	H	3	0
" 24	Crystal Palace	A	1	5
" 26	Arsenal	H	1	0
" 27	Arsenal	A	1	3
" 31	Clapton Orient	H	8	1
Jan. 7	West Ham Utd.	A	0	3
" 14	Charlton Athletic	H	5	1
" 21	Fulham	H	0	2
" 28	Brentford	A		
Feb. 4	Northampton Town	H		
" 11	Swansea Town	A		
" 18	Coventry City	H		
" 25	Aldershot	H		
Mar. 8	Reading	A		
" 11	Chelsea	H		
" 16	Leicester City	A		
" 18	Tottenham H.	A		
" 25	Watford	H		
April 1	Brighton & H.A.	A		
" 8	Leicester City	H		
" 15	Portsmouth	A		
" 18	Millwall	A		
" 22	Queen's Park Rangers	H		
" 29	Southend Utd.	A		
May 6	Crystal Palace	H		

ASK FOR
**J. W. GREEN'S
X.X.X.X. STINGO**

An invigorating Ale of generous strength and excellent quality

When you're on a good thing, stick to it.

J. W. GREEN LTD., THE BREWERY, LUTON
TELEPHONE: LUTON 1454

PALACE
TO-NIGHT—
The Greatest Mystery Picture!!

THE OLD DARK HOUSE
Also WILL ROGERS at his wittiest, in
DOWN TO EARTH

LUTON TOWN. 2
COLOURS—BLACK & WHITE STRIPES

RIGHT

LEFT

**ALMA
KINEMA LUTON**

TO-NIGHT—

INA CLAIRE in

**THE GREEKS
HAD A WORD
FOR THEM**

Also BUCK JONES in

HIGH SPEED

Ernest Gautier at the Grand Compton Organ

**THE GREATEST SHOW
FOR MILES!**

RIGHT

Harford

Kingham

Mackey

Kean

McGinnigle

Fraser

Mills

Nelson

Tait

Alderson

Roberts

Referee—
Mr. G. C. Denton
(Northampton)

Linesmen—
Mr. G. O. Smith, Warsop
(red flag); Mr. G. W. Har-
wood, Sherwood (blue flag)

Leopard
BROTHERS
A 5GN SUIT
FOR 10!

Evans

Hall

Hunt

Howe

Meads

Levene

Colquhoun

Whatley

Felton

Nicholls

LEFT

TOTTENHAM HOTSPURS 0
COLOUR—RED.



Proprietors:
Luton & Dunstable
Greyhound Racing Club, Ltd.
Room 4,
Old G.P.O. Buildings,
Cheapside, Luton.
Phone: 366.

GREYCEING

LUTON - Dunstable Rd. Track

EVERY WEDNESDAY AND SATURDAY EVENING
AT 7.30 P.M.

AND SUNDAYS AT 11.0 A.M. AND 6.30 P.M.

ADMISSION: 1/4, 2/6, incl. Tax & Card. Free Car Park

**EMPIRE
BURY PARK RD**

TO-NIGHT—

STAN LAUREL & OLIVER HARDY in

**PACK UP YOUR
TROUBLES**

Also HENRY KENDALL in

WATCH BEVERLEY

**LUTON'S MOST
EXCLUSIVE CINEMA**

JANES BROS.

ENGINEERS TO THE
HAT TRADE SINCE

1888

High Town Road - - Luton
PHONE 242

TAILORING FOR ALL

The largest selection of Made-to-Measure and Ready-to-Wear OVERCOATS and SUITS in LUTON. Prices within reach of all.

Quality, Value and Satisfaction Guaranteed.

Your inspection invited without obligation to purchase.

JOHN BRIGHT
OUTFITTERS LIMITED

"THE BELL," GEORGE ST., LUTON.

The Tailor that suits you best

Here for
SPECIAL BARGAINS

GENT'S

Solid Gold STRAP WATCH

15-Jewel lever movement in latest square shapes. This is an exceptional offer from a large cash purchase. Worth £3 3s. od., and carries our usual Full Guarantee.

F. HINDS, Ltd.

JEWELLERS
EST. 1856

5, PARK SQUARE, LUTON

BRANCHES LONDON AND PROVINCES

THE SEASON'S GOAL SCORERS

(Up to preceding Game).

Name.	3rd Div.	L.C.	F.	F.A. Cup.
Alderson	3	5	—	—
Bailey	—	1	1	—
Brown	—	6	1	—
Corkindale	—	5	1	—
Fraser	2	—	—	—
J. Hoar	—	1	—	—
Hutchison	4	2	—	—
Kean	2	—	—	1
McGinnigle	—	—	—	1
Mills	7	—	—	—
Nelson	2	5	1	—
Pacey	—	1	—	—
Parish	—	7	—	—
Rennie	5	1	—	5
Roberts	1	—	—	—
Rowe	2	5	—	—
Tait	12	—	—	3
Weaver	—	5	1	—
Whalley	1	10	—	—
Rockford(Portsm'th)own goal	—	1	—	—

Today's Half-time Scores

The half-time scores are given in two lists. Copy the first list and then watch the Board for the second list, which will be given immediately.

CLUBS	Scores.	CLUBS	Scores.
First named is home team.		First named is home team.	
FIRST LIST.		SECOND LIST.	
F.A. CUP.			
A Aston Villa v. Sunderland.		A Southend v. Derby.	
B Aldershot v. Millwall.		B Tranmere v. Leeds.	
C Burnley v. Sheffield Utd.		C West Ham v. West Bromwich.	
D Birmingham v. Blackburn.		LEAGUE.	
E Bolton v. Grimsby.		D Chelsea v. Wolves.	
F Blackpool v. Huddersfield.		E Portsmouth v. Newcastle.	
G Brighton v. Bradford.		F P. Vale v. Fulham.	
H Chester v. Halifax.		G Preston v. Charlton.	
K Darlington v. Chesterfield.		H Southampton v. Lincoln.	
L Everton v. Bury.		K Swansea v. Bradford.	
M Middlesbrough v. Stoke.		L Bristol R. v. Cardiff.	
N Manchester v. Walsall.		M Rangers v. Gillingham.	
		N Swindon v. Northampton.	

NOTE.—The letter in the Programme corresponds with the letter on the Board—thus A o-x means that the first-named Club has scored o and their opponents x.

HEAR THEM
FREE TODAY
IN YOUR
OWN HOME

PHILCO

BALANCED UNIT RADIO

THE MOST
SENSATIONAL
PERFORMANCE
IN RADIO . . .

The most amazing value in radio—the New Philco 5-valve balanced superhet for 16 gns. ! No other set at the price comes near it for tone, for range, for selectivity. See it and hear it—free—to-day !

EASY TERMS
ARRANGED

ACCREDITED DEALER—

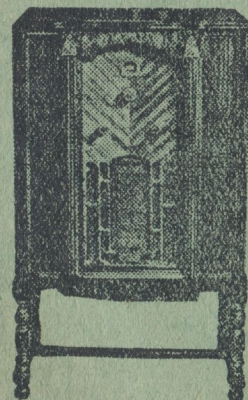
BROWN

36 Park St, Luton

PHONE 1809



MODEL 56 BABY GRAND
16 GNS.



MODEL 56 LOWBOY
22 GNS.

BEST AFTER ALL TESTS

ASK
FOR
G. K.
AT
YOUR
CLUB



DELIVERIES
IN ALL
DISTRICTS
SEVERAL
TIMES
DAILY

G.K.	SMALL BOTTLES 4½d.	LARGE BOTTLES 8d.	FLAGONS 1/3
G.K. MILD	4d.	7d.	1/1

SOLE
LOCAL
AGENTS

H. INWOOD, LTD.,

SOLE
LOCAL
AGENTS

NEW BEDFORD ROAD

42, CHAPEL STREET

108, DUNSTABLE ROAD

'Phone 241.

'Phone 1425.

'Phone 241.

GRAND THEATRE · LUTON

TO-NIGHT AT 7.45 p.m.

L.A.O.D.S. presents

THE ARCADIANS

The Musical Comedy of all time.

A Real Musical Treat.

An Abundance of Good Humour.

If Luton likes good music, fine singing,
and a delightful plot—then this is the
Production to see.

EARL HAIG MEMORIAL

SERVICE for
MEN ONLY

IN

St. Matthew's Church
at 3 p.m.

Parade of Luton British Legion

Address by the Vicar

* * * *

VOCALISTS:

MR. & MRS. CARTER GREGORY

Entertainments in Luton

GRAND THEATRE

"THE ARCADIANS."

In Arcadia it is always summer; there is a patch of blue sky beyond the shady elms, and blossom hangs above the mossy boulders, while the people of that fair land are as picturesque as their home, with flowery garlands, skins and draperies for clothing, and life as simple as a song.

Such are the folk into whom Luton Amateur Operatic and Dramatic Society have changed themselves this week, for the performance at the Grand Theatre of "The Arcadians," a fantastical musical play in three acts, which they have chosen to perform this year for their tenth musical production.

The outstanding impression is one of prettiness and simple charm, contrasted first with the clumsiness of the modern "monster," who chances upon this land of pleasant unreality and is responsible for the introduction of more of his type, and secondly with the no less picturesque, but oppositely smart and sophisticated set, who have gathered at the Askwood racecourse for a social event no less than for a sporting one.

The cast is undoubtedly good, and the wide range of "types" which the play introduces with such variety to characterisation and plot has given scope for acting of almost every kind any amateur could desire within the confines of one play, whether it be the serious, the buffoon, the smart man-about-town and his lady friends, the simple idealist, or the "nouveau-riche."

EMPIRE

"PACK UP YOUR TROUBLES."

In this, their second full-length film, "Pack up Your Troubles," showing to-night, that inimitable pair, Laurel and Hardy, are even more hilarious than ever. It is their efforts to help win the war that runs them into such comical situations of the sort in which they have no equals. Titterton, the great English tenor, is shown in Pathetone Weekly. The supporting picture, "Watch Beverly," shows Henry Kendall and Dorothy Bartlam in some amusing adventures.

ALMA

"The Greeks had a word for them" is a fast-moving story of three girls who came to Broadway. How the men took to them—and how they took the men—these three gold diggers, Joan Blondell, Ina Claire and Madge Evans, are the stars to-night. Buck Jones is also featured in new thrills in "High Speed," a daring drama of the speedway. On Monday Tallulah Bankhead and Gary Cooper appear in "Devil and the Deep," and Tim McCoy in "The Fighting Marshal."

PALACE

"THE DARK HOUSE."

J. B. Priestley's great mystery novel has become the greatest mystery picture. "The Old Dark House," featuring Boris Karloff, Charles Laughton, Melvyn Douglas and others, vividly portrays a night of terrors in an ancient house in the lonely mountains of Wales. Boris Karloff is even more grotesque than in that remarkable picture, "Frankenstein." A contrast is provided by Will Rogers at his wittiest in "Down to Earth." Patrons to-night are assured of a good evening's entertainment.

WELLINGTON

"JACK'S THE BOY."

To-night the famous British pair, Jack Hulbert and Cicely Courtneidge, appear together in "Jack's the Boy," a film whose humour has become by this time proverbial. Jack is the son of a "big noise" at Scotland Yard, but his father did not take this as justification for Jack's joining the force to re-organise it. As Constable Brown, Jack has some first-rate adventures, the full humour of which must be seen to be appreciated.

"THE GUILTY GENERATION."

How children suffer for the sins of their parents, how family ties make young innocents guilty, is the theme of the Columbia picture, "The Guilty Generation," showing next Monday. Leo Carrillo is the motivating force in the play. He even puts artistry into the flicking of cigar ashes. Emma Dunn, in the character role, Constance Cummings, Robert Young and Boris Karloff, give capable performances. The supporting feature is Buck Jones in "The Lone Rider."

WELLINGTON CINEMA

TO-NIGHT—

JACK HULBERT in

JACK'S THE BOY

MONDAY NEXT—

Matinees Mon. and Wed. at 2 o'clock.

THE GUILTY GENERATION

Also BUCK JONES in

The LONE RIDER

Join To-day

Fill up this Membership Form now and send, together with your Subscription, to the Registrar (Mr. Denis Wright, Cromwell Hill, Luton), or the Hon. Secs., Messrs. Gilder and Hunt, "News" Office, Luton.

I desire to be enrolled as a member of the above Club, and have pleasure in forwarding my subscription for the year ending August 31st, 1933. (The minimum subscription is 1/- annually).

Name.....

Address.....

.....
.....

How They Stand in the League

DIVISION III (SOUTH)

	P	W	L	D	F	A	P
Brentford	23	16	4	3	44	24	35
Exeter	24	15	5	4	57	28	34
Reading	23	13	3	7	64	33	33
Norwich	24	11	4	9	46	29	31
Northampton	24	10	8	6	50	35	26
Palace	25	10	9	6	43	40	26
Brighton	24	11	9	4	36	40	26
Coventry	24	11	10	3	62	46	25
Watford	25	10	10	5	41	41	25
Southend	24	9	8	7	40	48	25
Bournemouth	26	8	9	9	41	51	25
Bristol R.	23	10	9	4	41	39	24
Gillingham	24	10	12	2	38	34	22
Rangers	24	9	11	4	46	49	22
Aldershot	24	9	11	4	37	44	22
Torquay	24	7	10	7	45	44	21
LUTON TOWN	23	8	10	5	41	43	21
Orient	25	6	10	9	42	56	21
Bristol City	24	7	12	5	46	52	19
Cardiff	24	6	14	4	39	61	16
Swindon	23	6	13	4	42	68	16
Newport	26	4	15	7	32	66	15

LONDON COMBINATION

	P	W	L	D	F	A	P
Fulham	29	20	3	6	73	31	46
Brentford	28	19	4	5	81	37	43
Arsenal	28	20	6	2	97	32	42
West Ham	28	17	5	6	92	37	40
Swansea	29	17	8	4	56	39	38
Palace	29	15	9	5	74	58	35
Spurs	27	15	10	2	74	56	32
Portsmouth	28	11	7	10	59	46	32
Leicester	30	13	12	5	76	78	31
Coventry	28	12	14	2	72	67	26
Reading	29	10	13	6	62	80	26
Charlton	26	10	11	5	49	55	25
Rangers	29	10	14	5	54	70	25
Chelsea	28	10	13	5	43	64	25
Millwall	29	6	11	12	50	70	24
LUTON TOWN	28	9	14	5	55	53	23
Watford	25	10	12	3	60	60	23
Northampton	26	9	12	4	40	58	22
Brighton	27	9	14	4	43	60	22
Southend	27	10	16	1	52	68	21
Bristol City	28	7	16	5	49	71	19
Orient	29	5	16	8	39	75	18
Aldershot	29	6	19	4	40	81	16
Southampton	25	5	16	4	31	70	14

YOU ARE KNOWN BY YOUR NOTEPAPER ::

Your notepaper is your emissary into an unknown world. The forerunner of an interview; the first impression on a man when you write for a job.

Let his first impression of you be one of respect and admiration, brought in by the use of good stationery.

Let your letter paper
be better paper.

GIBBS, BAMFORTH & Co.
Manchester Street - - - Luton

**WARREN'S
WIRELESS**

**SERVICE
STANDS
SUPREME**

CONSULT THEM AT
70, WELLINGTON ST.
LUTON.

W. F. BING

Dyer & Cleaner

70, Stuart St. - Luton

Cleaning Suits,
Costumes and Coats
a speciality
from **3/6**

Suits, Coats and
Costumes Sponged
and Pressed

1/6

Mourning Orders Dyed in 24 hrs.
VALET SERVICE

Your Own Judgment Will Tell You—

why New Hudson is THE BEST BICYCLE FOR YOU—directly you start examining it at Partridge's.

And as soon as you ride it—your judgment will be confirmed. You'll appreciate (by comparison) that never before has rider-comfort been so assiduously studied.

Every New Hudson Bicycle is the master-product of master-craftsmen with over 50 years' experience in the manufacture of QUALITY BICYCLES.

Small wonder that countless thousands of discriminating cyclists prefer NEW HUDSON—for "EXCELLENT" REASONS!

NEW-HUDSON



MODELS

from

£4/19/6



EASY TERMS
ARRANGED

LUTON'S LEADING CYCLE AGENTS

A. G. Partridge & Co

PHONE 234

10-12 CHAPEL ST.
LUTON

NEW HUDSON DEPOT