



TRUE - FORM



FOOTWEAR

The Best Value
IN THE TOWN

BUY FROM THE ACTUAL MAKERS

LOCAL BRANCH:

44, GEORGE STREET.

Head Office and Factories, NORTHAMPTON.

The Fox Hotel

J.W. GREEN'S
FINE
ALES
AND
STOUTS



A.R.
Monument
WILL BE PLEASED
TO MEET
OLD & NEW
FRIENDS

PHONE 822

DUNSTABLE RD LUTON - CLOSE TO FOOTBALL GROUND

Charnley
and Sons

Qualified
Ophthalmic Opticians

SIGHT-TESTING
EYEGLASSES
SPECTACLES
- REPAIRS -

15, Wellington Street
LUTON

For First Class

TEAS
& REFRESHMENTS

after the match
call at the —

OAKEN
CASKET

184, Dunstable Rd.
QUICK SERVICE & QUALITY
CYCLES STORED

Luton Town Football & Athletic

CO., LTD.

PRESIDENT:
MR. HARRY ARNOLD, C.A., J.P.

DIRECTORS:
MESSRS. E. G. GIBBS (CHAIRMAN), E. MOUSE (VICE-CHAIRMAN),
WILLET BALL, J.P., S. H. GODFREY, C.A., H. R. HANSELL,
H. HEWSON, C. JEYES, C.C., S. WILKINSON.

SECRETARY-MANAGER: MR. HAROLD WIGHTMAN.

ASSISTANT SECRETARY: MR. A. E. WICKSON.

F.A. Cup Replay.

LUTON v. BARNSELEY.

Wednesday, Jan. 18th.

Once more our boys have confounded the pessimists. Few of the critics thought that we could hold Barnsley to a draw, to say little of a possible win, but we ought to have pulled through in the first half. Still, though we are confident that with average luck we shall win this afternoon, we have only the fullest possible respect for our friend the enemy. Perhaps they are just as confident, and that is the right spirit. We do not anticipate any change in either team, and we hope there will be an easy time for the referee. Considering the issues involved, we could not grumble about the play on Saturday, and we hope our Barnsley friends will have no fault to find with their reception here: though we want the result to be in our favour, of course.

We were made very welcome at Barnsley, and all they could do to make us comfortable was done, and we appreciated Yorkshire hospitality.

Barnsley's history is almost contemporaneous with ours, and similar in its inception. They did not join the Second Division of the League until 1898, but had already won some fame as Cup-fighters. Big strides were made during the term of our old friend and secretary, John M'Cartney, who went from Luton to Barnsley as a player, and became Secretary-Manager. Oakwell is the original ground of the club, and Saturday was not the first time that Luton Town had played at Barnsley—both clubs were in the Second Division in 1898—9 and 1899—1900. It was in the latter season that Luton finished second from the bottom, and Barnsley were only one rung above them. They have not often been very high in the Division, but only just missed promotion in 1914-15 and 1921-22. Last season they were relegated, but it is probable that their fall was due chiefly to the industrial depression, which has been very severe in that area. Win or lose to-day, we wish them good luck and hope one of these fine days to meet them in the Second Division.

A BIG PRIZE.

There is no need to remind either team that there is a big prize attaching to the team for the next round—for the winners entertain the 'Spurs.

THE LUTON BAND

Programme of Music

FOX TROT	-	"When they are on the Love Parade"	-	Wallace
TWO-STEP	-	"The London Fire Brigade"	-	Nicholls
FOX TROT	-	"A Bed-Time Story"	-	Nicholls
FOX TROT	-	"I don't want to go to bed"	-	Bates
TWO-STEP	-	"How are you?"	-	Pola
TWO-STEP	-	"Marching along together"	-	Steininger

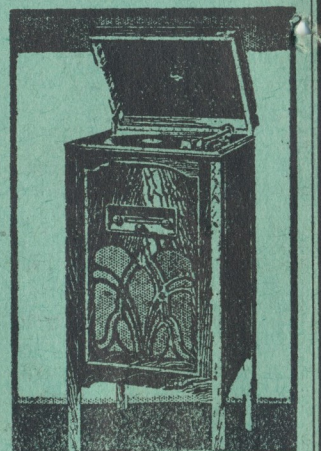
See the Latest MARCONIPHONES
at

**MASTERPHONE &
ELECTRIC Co., Ltd.**
BURY PARK RD., LUTON

PHONE 1807

Model 330, as illustrated, has already established itself as the finest value in Radiograms in its class on the market. Combined in its handsome oak cabinet is a four-valve (inc. rect.) Receiver of unique design, a highly sensitive Moving Coil Speaker, and complete electrical gramophone equipment and pick-up—no winding.

CASH PRICE 32 Gns. Or 67/- down and 12 monthly payments of 54/3.



Luton Town F.C. 1st.X1 Fixtures

The League, Div. III (Southern).

DATE	OPPONENTS	GROUND	F.	A.
Aug. 27	Northampton Town	H	2	1
" 29	Clapton Orient	A	0	0
Sept. 3	Bristol City	A	2	5
" 5	Clapton Orient	H	4	1
" 10	Coventry City	H	4	1
" 17	Brentford	A	0	1
" 24	Torquay United	H	2	1
Oct. 1	Exeter City	A	0	2
" 8	Gillingham	H	2	1
" 15	Newport	H	2	2
" 22	Watford	A	1	4
" 29	Cardiff City	H	8	1
Nov. 5	Reading	A	1	4
" 12	Norwich City	H	1	1
" 19	Brighton & H.A.	A	0	2
" 26	Kingstonians (F.A. Cup, 1st round)	H	2	2
" 30	Kingstonians (F.A. Cup Replay)	A	3	2
Dec. 3	Aldershot	A	2	2
" 10	Stockport (F.A. Cup, 2nd Round)	A	3	2
" 17	Southend U.	A	1	2
" 24	Crystal Palace	H	1	1
" 26	Bournemouth	A	2	0
" 27	Bournemouth	H	1	2
" 31	Northampton Town	A	0	1
Jan. 7	Bristol City	H	5	4
" 14	Barnsley (F.A. Cup, 3rd Round, Competition Proper)	A	0	0
" 18	Barnsley (F.A. Cup Replay)	H	2	0
" 21	Coventry City	A	0	4
" 28	Brentford	H	2	0
" 28	SPURS (F.A. Cup, 4th Rd.)	H	2	0
Feb. 4	Torquay United	A		
" 11	Exeter City	H		
" 18	Gillingham	A		
" 25	Newport	A		
Mar. 4	Watford	H		
" 11	Cardiff City	A		
" 18	Reading	H		
" 25	Norwich City	A		
April 1	Brighton & H.A.	H		
" 8	Bristol Rovers	A		
" 14	Swindon Town	H		
" 15	Aldershot	H		
" 17	Swindon Town	A		
" 22	Queen's Park R.	A		
" 29	Southend United	H		
May 6	Crystal Palace	A		

PHONE:
288



PHONE:
288

LUTON 2/6 LONDON

Any Day

Any Time

SALOON COACHES FOR PRIVATE HIRE
FOOTBALL PARTIES CATERED FOR

BOOKING OFFICE: 25, PARK STREET WEST, LUTON.

BOND'S

98/100 CASTLE ST.

for

Radio Gramophones
from 12 Gns.

CASH OR EASY TERMS.

Free Service after Purchase for full
period of Guarantee.

Accumulator Charging Service.

EFFICIENT Hire Car SERVICE

'Phone 858

GARAGE :: PETROL, ETC.

OVERCOAT DAYS ARE! HERE AGAIN!

Newest Models

All Sizes

2 gns. to 5½ gns.

SEE SPECIAL WINDOW DISPLAYS
AT

CHARLES MARES,
65-67, George St., and
187, Dunstable Rd., Luton

CHARLES MARES, LTD.

Luton Town F.C. 2nd.XI Fixtures

London Combination.

DATE	OPPONENTS	GROUND	F.	A.
Aug. 27	Clapton Orient	A	1	1
" 29	Bristol City	H	2	6
Sept. 3	West Ham Utd.	H	1	2
" 5	Bristol City	A	1	1
" 10	Fulham	A	1	5
" 12	Southampton	H	3	0
" 17	Brentford	H	1	2
" 19	Southampton	A	1	0
" 24	Northampton T.	A	2	3
" 26	Reading	H	6	1
Oct. 1	Swansea Town	H	0	2
" 8	Coventry City	A	2	4
" 15	Aldershot	A	1	1
" 20	Cambridge U. (F.)	A	5	0
" 22	Millwall	H	8	0
" 29	Chelsea	A	0	3
Nov. 5	Tottenham H.	H	0	0
" 12	Watford	A	1	3
" 19	Brighton & H.A.	H	1	1
Dec. 3	Portsmouth	H	3	1
" 10	Queen's Park R.	A	1	2
" 17	Southend Utd.	H	3	0
" 24	Crystal Palace	A	1	5
" 26	Arsenal	H	1	0
" 27	Arsenal	A	1	3
" 31	Clapton Orient	H	8	1
Jan. 7	West Ham Utd.	A	0	3
" 14	Charlton Athletic	H	5	1
" 21	Fulham	H		
" 28	Brentford	A		
Feb. 4	Northampton Town	H		
" 11	Swansea Town	A		
" 18	Coventry City	H		
" 25	Aldershot	H		
Mar. 8	Reading	A		
" 11	Chelsea	H		
" 16	Leicester City	A		
" 18	Tottenham H.	A		
" 25	Watford	H		
April 1	Brighton & H.A.	A		
" 8	Leicester City	H		
" 15	Portsmouth	A		
" 18	Millwall	A		
" 22	Queen's Park Rangers	H		
" 29	Southend Utd.	A		
May 6	Crystal Palace	H		

ASK FOR
**J. W. GREEN'S
X.X.X.X. STINGO**

An invigorating Ale of generous strength and excellent quality

When you're on a good thing, stick to it.

J. W. GREEN LTD., THE BREWERY, LUTON
TELEPHONE: LUTON 1454

PALACE

TO-NIGHT—

THE WONDER BRITISH FILM ROME EXPRESS



Proprietors:
Luton & Dunstable
Greyhound Racing Club, Ltd.
Room 4,
Old G.P.O. Buildings,
Cheapside, Luton.
Phone: 366.

GREYCYING

LUTON - Dunstable Rd. Track

EVERY WEDNESDAY AND SATURDAY EVENING
AT 7.30 P.M.

AND SUNDAYS AT 11.0 A.M. AND 6.30 P.M.

ADMISSION: 1/4, 2/6, incl. Tax & Card. Free Car Park

ALMA

KINEMA LUTON

THURS., FRI. & SAT.—

SARI MARITZA in

Forgotten Commandments

Also JACK OAKIE and
BEN TURPIN in

Million Dollar Legs

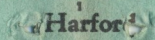
Ernest Gautier at the Grand Compton Organ

**the GREATEST SHOW
FOR MILES!**

RIGHT

LUTON TOWN.

COLOUR—WHITE



7 Mills

4 Kean

8 Tait

Referee—

Mr. T. Greaves, Burslem.

5 McGinnigle

9 Rennie



3 Mackey

6 Fraser

10 Alderson

11 Roberts

Linesmen—Mr. W. S. Dalý,
Essex (red flag); Mr. S.
A. Monison, The Army
(blue flag).

12 Archibald

13 Andrews

14 Wallbanks

15 Smith

16 Ashton

17 Whitworth

18 Henderson

19 Lax

20 Shotton

21 Richards

22 Ellis

BARNSELY.

COLOUR—RED.

LEFT

RIGHT

EMPIRE

BURY PARK RD

TO-NIGHT—

DIVORCE IN THE FAMILY

With JACKIE COOPER, CONRAD
NAGEL, LEWIS STONE, LOIS WILSON.
Also

DANGERS of the ARCTIC

A Drama of the Frozen North. Based on
the Earl Rossman Arctic Expedition.

LUTON'S MOST EXCLUSIVE CINEMA

JANES BROS.

ENGINEERS TO THE
HAT TRADE SINCE
1888

High Town Road - - Luton
PHONE 242

TAILORING FOR ALL

The largest selection of Made-to-Measure and
Ready-to-Wear OVERCOATS and SUITS in
LUTON. Prices within reach of all.

Quality, Value and Satisfaction Guaranteed.

Your inspection invited without obligation to
purchase.

JOHN BRIGHT
OUTFITTERS LIMITED

"THE BELL," GEORGE ST., LUTON.

The Tailor that suits you best

Here for
SPECIAL BARGAINS

GENT'S

Solid Gold STRAP WATCH

15-Jewel lever movement in latest square shapes. This
is an exceptional offer from a large cash purchase.
Worth £3 3s. od., and carries our usual Full Guarantee.

F. HINDS, Ltd. JEWELLERS
EST. 1856

5, PARK SQUARE, LUTON

BRANCHES LONDON AND PROVINCES

THE SEASON'S GOAL SCORERS

(Up to preceding Game).

Name.	3rd Div.	L.C.	F.	F.A. Cup.
Alderson	3	5	—	—
Bailey	—	1	1	—
Brown	—	6	1	—
Corkindale	—	5	1	—
Fraser	2	—	—	—
J. Hoar	—	1	—	—
Hutchison	4	2	—	—
Kean	2	—	—	1
McGinnigle	—	—	—	1
Mills	7	—	—	—
Nelson	2	5	1	—
Pacey	—	1	—	—
Parish	—	7	—	—
Rennie	5	1	—	3
Roberts	1	—	—	—
Rowe	2	5	—	—
Tait	12	—	—	3
Weaver	—	5	1	—
Whalley	1	10	—	—
Rockford(Portsm'th)own goal	—	1	—	—

THE CUP TIE

GET TO-MORROW'S
“LUTON NEWS”
for
Full Descriptive Report
of
To-day's Cup Match
“All the Views—All the News”

HEAR THEM
 FREE TODAY
 IN YOUR
 OWN HOME

PHILCO
 BALANCED UNIT RADIO

THE MOST
 SENSATIONAL
 PERFORMANCE
 IN RADIO . . .

The most amazing
 value in radio—the
 New Philco 5-valve
 balanced superhet for
 16 gns. ! No other set
 at the price comes
 near it for tone, for
 range, for selectivity.
 See it and hear it—
 free—to-day !

EASY TERMS
 ARRANGED

ACCREDITED DEALER—

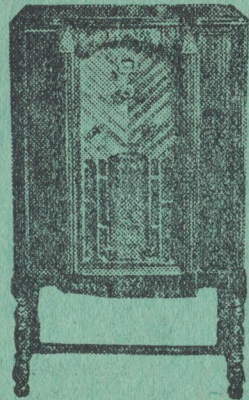
BROWN

36 Park St, Luton

PHONE 1809



MODEL 56 BABY GRAND
 16 GNS.



MODEL 56 LOWBOY
 22 GNS.

BEST AFTER ALL TESTS

ASK
 FOR
G. K.
 AT
 YOUR
 CLUB



DELIVERIES
 IN ALL
 DISTRICTS
 SEVERAL
 TIMES
 DAILY

G.K.

4½d.

8d.

FLAGONS
 1/3

G.K. MILD

4d.

7d.

1/1

SOLE
 LOCAL
 AGENTS

NEW BEDFORD ROAD

'Phone 241.

H. INWOOD, LTD.,

42, CHAPEL STREET

'Phone 1425.

108, DUNSTABLE ROAD

'Phone 241.

SOLE
 LOCAL
 AGENTS

GRAND

THEATRE • LUTON

TO-NIGHT—

Children half-price to all performances (at the doors only) except Saturday night.

DOT STEPHENS presents a real old Christmas Pantomime,

ROBINSON CRUSOE

THE SUNSHINE FOLLIES BAND,
THE SUNSHINE SALLY GIRLS,
and the famous SUNSHINE BABIES.

St. Matthew's Church

POPULAR SERVICE

for

MEN

Every Sunday Afternoon

OUR PORTRAIT GALLERY



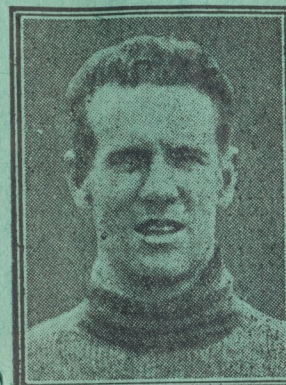
KEAN



MCGINNIGLE



FRASER



HARFORD



MACKEY



RENNIE

WELLINGTON

CINEMA

TO-NIGHT—

ISOBEL ELSOM and AUSTIN TREVOR
in a New Mystery Thriller,

THE CROOKED LADY

Also TIM McCOY in

Daring Danger

Join To-day

Fill up this Membership Form now and send, together with your Subscription, to the Registrar (Mr. Denis Wright, Cromwell Hill, Luton), or the Hon. Secs., Messrs. Gilder and Hunt, "News" Office, Luton.

I desire to be enrolled as a member of the above Club, and have pleasure in forwarding my subscription for the year ending August 31st, 1933. (The minimum subscription is 1/- annually).

Name.....

Address.....

.....
.....

How They Stand in the League

DIVISION III (SOUTH)

	P	W	L	D	F	A	P
Brentford	22	16	3	3	44	22	35
Reading	22	12	3	7	61	31	31
Norwich	23	11	3	9	44	26	31
Exeter	22	13	5	4	51	27	30
Palace	24	10	8	6	43	39	26
Northampton	23	9	8	6	44	35	24
Bristol Rov.	22	10	8	4	40	36	24
Brighton	22	10	8	4	33	35	24
Coventry	23	10	10	3	58	46	23
Bournemouth	24	7	8	9	38	46	23
Southend	23	8	8	7	38	47	23
Aldershot	22	9	9	4	34	37	22
LUTON TOWN	22	8	9	5	41	39	21
Torquay	23	7	9	7	44	42	21
Watford	23	8	10	5	35	38	21
Gillingham	23	9	12	2	33	32	20
Rangers	22	8	10	4	45	46	20
Orient	24	5	10	9	35	55	19
Bristol City	22	6	11	5	41	47	17
Swindon	22	6	12	4	41	61	16
Cardiff	23	6	13	4	38	59	16
Newport	24	3	14	7	28	63	13

LONDON COMBINATION

	P	W	L	D	F	A	P
Fulham	28	19	3	6	71	31	44
Arsenal	27	20	5	2	96	30	42
Brentford	27	18	4	5	75	35	41
West Ham	27	16	5	6	87	37	38
Swansea	28	16	8	4	53	39	36
Palace	28	15	8	5	72	52	35
Spurs	26	14	10	2	67	54	30
Portsmouth	27	10	7	10	56	46	30
Leicester	28	13	11	4	74	75	30
Coventry	27	12	13	2	71	64	26
Reading	28	10	12	6	61	73	26
Charlton	25	10	10	5	49	52	25
LUTON TOWN	27	9	13	5	55	51	24
Watford	24	10	11	3	57	56	23
Rangers	28	9	14	5	50	67	23
Millwall	27	6	10	11	49	64	23
Chelsea	26	9	12	5	37	60	23
Northampton	23	9	10	4	40	50	22
Brighton	26	8	14	4	40	59	20
Southend	25	9	15	1	46	65	19
Orient	28	5	15	8	37	70	18
Bristol City	27	6	16	5	47	70	17
Southampton	24	4	16	4	29	69	12
Aldershot	27	4	19	4	35	79	12

YOU ARE KNOWN BY YOUR NOTEPAPER ::

Your notepaper is your emissary into an unknown world. The forerunner of an interview; the first impression on a man when you write for a job.

Let his first impression of you be one of respect and admiration, brought in by the use of good stationery.

Let your letter paper
be better paper.

GIBBS, BAMFORTH & Co.
Manchester Street - - - Luton

**WARREN'S
WIRELESS**

**SERVICE
STANDS
SUPREME**

CONSULT THEM AT
70, WELLINGTON ST.
LUTON.

W. F. BING

Dyer & Cleaner

70, Stuart St. - Luton

Cleaning Suits,
Costumes and Coats
a speciality

from **3/6**

Suits, Coats and
Costumes Sponged
and Pressed

1/6

Mourning Orders Dyed in 24 hrs.
VALET SERVICE

Your Own Judgment Will Tell You—

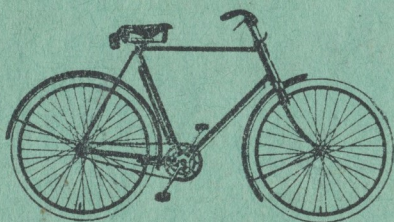
why New Hudson is THE BEST BICYCLE FOR YOU—directly you start examining it at Partridge's.

And as soon as you ride it—your judgment will be confirmed. You'll appreciate (by comparison) that never before has rider-comfort been so assiduously studied.

Every New Hudson Bicycle is the master-product of master-craftsmen with over 50 years' experience in the manufacture of QUALITY BICYCLES.

Small wonder that countless thousands of discriminating cyclists prefer NEW HUDSON—for "EXCELLENT" REASONS!

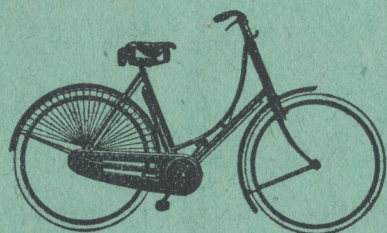
NEW-HUDSON



MODELS

from

£4/19/6



EASY TERMS
ARRANGED

LUTON'S LEADING CYCLE AGENTS

A. G. Partridge & Co

PHONE 234

10-12 CHAPEL ST.
LUTON

NEW HUDSON DEPOT