



**TRUE - FORM**



**FOOTWEAR**

**The Best Value**  
IN THE TOWN

**BUY FROM THE ACTUAL MAKERS**

LOCAL BRANCH:

**44, GEORGE STREET.**

Head Office and Factories, NORTHAMPTON.



# The Fox Hotel

J.W. GREENS  
FINE  
ALES  
AND  
STOUTS



A.R.  
Monument  
WILL BE PLEASED  
TO MEET  
OLD & NEW  
FRIENDS

PHONE 822

DUNSTABLE RD LUTON - CLOSE TO FOOTBALL GROUND

**Charnley**  
and Sons

Qualified  
Ophthalmic Opticians

SIGHT-TESTING  
EYEGLASSES  
SPECTACLES  
- REPAIRS -

15, Wellington Street  
LUTON

For First Class

**TEAS**  
& REFRESHMENTS

after the match  
call at the —

**OAKEN  
CASKET**

184, Dunstable Rd.  
QUICK SERVICE & QUALITY  
CYCLES STORED

# Luton Town Football & Athletic

CO., LTD.

PRESIDENT:  
MR. HARRY ARNOLD, C.A., J.P.

DIRECTORS:  
MESSRS. E. G. GIBBS (CHAIRMAN), E. MOUSE (VICE-CHAIRMAN),  
WILLET BALL, J.P., S. H. GODFREY, C.A., H. R. HANSELL,  
H. HEWSON G. JEYES, C.C., S. WILKINSON.

SECRETARY-MANAGER: MR. HAROLD WIGHTMAN.

ASSISTANT SECRETARY: MR. A. E. WICKSON.

F.A. CUP.

LUTON v. KINGSTONIANS.

Sat., Nov. 26th.

Everyone of our supporters will join with us in giving a most cordial welcome to the Kingstonsians. We hope to beat them, naturally, but we are sure they will leave Luton fully satisfied with the sportsmanship of the crowd and the Town team. We have had a few amateur sides here since the War, and without exception they have expressed pleasure with the game and with the encouragement received. We feel sure the Kingstonsians will be with them when they bid us good-bye.

We had to make changes this afternoon, and the Kingstonsians may be surprised to learn that no fewer than four of our forwards and one half-back have been playing in the Reserves during the last month. Mills would have been playing but for a severe ankle injury at Brighton in the last minute, and this gives Corkindale his second game with the seniors, his first being on the other extreme at Exeter. Nelson was another to suffer at Brighton, and Hutchison resumes at inside-right, while Fred Kean returns to his old position, and Hayhurst gets a further run as pivot.

We shall be pleased to see Douglas Whitehead again. He has scored a lot of goals for the Kingstonsians; we held a high opinion of him as an inside-left, and he played very well for us in several games the season before last. Macey we know very well by repute, and we hear good opinions about the whole team. They are deservedly leading the Isthmian League, and we wish them continued success.

The members of the Football Supporters Club are working very hard, and are not receiving as much encouragement as they would like. On Monday night they are holding another whist drive at the Central Cafe, Cheapside, and would be glad to get a full house. Be there by 7.45, please.

SUPPORTERS CLUB.—Ball ticket scheme. Winning No. 54,562, held by Mr. Cook, 14, Mill Street, Luton.



# THE LUTON BAND

## Programme of Music

FOX TROT	-	-	-	" Kiss by Kiss "	-	-	-	-	Rose
FOX TROT	-	-	-	" Underneath the Arches "	-	-	-	-	Flanagan
FOX TROT	-	-	-	" Hummin' to Myself "	-	-	-	-	Fain
FOX TROT	-	-	-	" Marta "	-	-	-	-	Gilbert
FOX TROT	-	-	-	" The Clouds Will Soon Roll By "	-	-	-	-	Brown
MARCH	-	-	-	" The Thunderer "	-	-	-	-	Sousa

See the Latest MARCONIPHONES

at

MASTERPHONE &

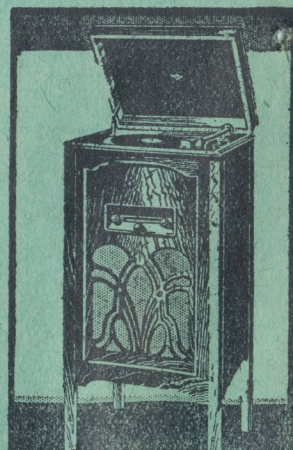
ELECTRIC Co., Ltd.

BURY PARK RD., LUTON

PHONE 1807

Model 330, as illustrated, has already established itself as the finest value in Radiograms in its class on the market. Combined in its handsome oak cabinet is a four-valve (inc. rect.) Receiver of unique design, a highly sensitive Moving Coil Speaker, and complete electrical gramophone equipment and pick-up—no winding.

CASH PRICE **32 Gns.** Or 67/- down and 12 monthly payments of 54/3.



# Luton Town F.C. 1st.X1 Fixtures

## The League, Div. III (Southern).

DATE	OPPONENTS	GROUND	F.	A.
Aug. 27	Northampton Town	H	2	1
" 29	Clapton Orient	A	0	0
Sept. 3	Bristol City	A	2	5
" 5	Clapton Orient	H	4	1
" 10	Coventry City	H	4	1
" 17	Brentford	A	0	1
" 24	Torquay United	H	2	1
Oct. 1	Exeter City	A	0	2
" 8	Gillingham	H	2	1
" 15	Newport	H	2	2
" 22	Watford	A	1	4
" 29	Cardiff City	H	8	1
Nov. 5	Reading	A	1	4
" 12	Norwich City	H	1	1
" 19	Brighton & H.A.	A	0	2
" 26	Kingstonians (F.A. Cup, 1st round)	H		
Dec. 3	Aldershot	A		
" 10	Queen's Park R.	H		
" 17	Southend U.	A		
" 24	Crystal Palace	H		
" 26	Bournemouth	A		
" 27	Bournemouth	H		
" 31	Northampton Town	A		
Jan. 7	Bristol City	H		
" 14	Bristol Rovers	H		
" 21	Coventry City	A		
" 28	Brentford	H		
Feb. 4	Torquay United	A		
" 11	Exeter City	H		
" 18	Gillingham	A		
" 25	Newport	A		
Mar. 4	Watford	H		
" 11	Cardiff City	A		
" 18	Reading	H		
" 25	Norwich City	A		
April 1	Brighton & H.A.	H		
" 8	Bristol Rovers	A		
" 14	Swindon Town	H		
" 15	Aldershot	H		
" 17	Swindon Town	A		
" 22	Queen's Park R.	A		
" 29	Southend United	H		
May 6	Crystal Palace	A		





PHONE:  
288

PHONE:  
288

DAILY SERVICE—  
LUTON AND LONDON  
—2/6 RETURN

SALOON COACHES FOR HIRE.  
HEATED and SUPPLIED WITH RUGS.

BOOKING OFFICE: 25, PARK STREET WEST, LUTON.

**BOND'S**  
98/100 CASTLE ST.  
for

**Radio Gramophones**

from 12 Gns.

CASH OR EASY TERMS.

Free Service after Purchase for full  
period of Guarantee.

Accumulator Charging Service.

**EFFICIENT Hire Car SERVICE**

'Phone 858

GARAGE :: PETROL, ETC.

**OVERCOAT  
DAYS ARE!  
HERE AGAIN.**

Newest Models

All Sizes

2 gns. to 5½ gns.

SEE SPECIAL WINDOW DISPLAYS  
AT

**CHARLES MARES,**

65-67, George St., and  
187, Dunstable Rd., Luton

CHARLES MARES, LTD.

# Luton Town F.C. 2nd.XI Fixtures

## London Combination.

DATE	OPPONENTS	GROUND	F.	A.
Aug. 27	Clapton Orient	A	1	1
" 29	Bristol City	H	2	6
Sept. 3	West Ham Utd.	H	1	2
" 5	Bristol City	A	1	1
" 10	Fulham	A	1	5
" 12	Southampton	H	3	0
" 17	Brentford	H	1	2
" 19	Southampton	A	1	0
" 24	Northampton T.	A	2	3
" 26	Reading	H	6	1
Oct. 1	Swansea Town	H	0	2
" 8	Coventry City	A	2	4
" 15	Aldershot	A	1	1
" 20	Cambridge U. (F.)	A	5	0
" 22	Millwall	H	8	0
" 29	Chelsea	A	0	3
Nov. 5	Tottenham H.	H	0	0
" 12	Watford	A	1	3
" 19	Brighton & H.A.	H	1	1
Dec. 3	Portsmouth	H		
" 10	Queen's Park R.	A		
" 17	Southend Utd.	H		
" 24	Crystal Palace	A		
" 26	Arsenal	H		
" 27	Arsenal	A		
" 31	Clapton Orient	H		
Jan. 7	West Ham Utd.	A		
" 14	Charlton Athletic	A		
" 21	Fulham	H		
" 28	Brentford	A		
Feb. 4	Northampton Town	H		
" 11	Swansea Town	A		
" 18	Coventry City	H		
" 25	Aldershot	H		
Mar. 8	Reading	A		
" 11	Chelsea	H		
" 16	Leicester City	A		
" 18	Tottenham H.	A		
" 25	Watford	H		
April 1	Brighton & H.A.	A		
" 8	Leicester City	H		
" 15	Portsmouth	A		
" 18	Millwall	A		
" 22	Queen's Park Rangers	H		
" 29	Southend Utd.	A		
May 1	Charlton Athletic	H		
" 6	Crystal Palace	H		



It's Still a Good Thing!

**J. W. GREEN'S  
NOTED LUTON ALE**  
Quality and Excellence Maintained

When you're on a good thing, stick to it.

J. W. GREEN, LTD., THE BREWERY, LUTON  
TELEPHONE: LUTON 1454

**ALMA  
KINEMA LUTON**

TO-NIGHT—

LIONEL BARRYMORE and  
NANCY CARROLL in

**The Man I Killed**

with PHILLIPS HOLMES.

Also BENITA HUME in

**Women Who Play**

Ernest Gautier at the Grand Compton Organ

**The GREATEST SHOW  
FOR MILES!**

**JANES BROS.**

ENGINEERS TO THE  
HAT TRADE SINCE

1888

High Town Road - - Luton

PHONE 242

**PALACE**

TO-NIGHT—

TOM WALLS and ANNE GREY in

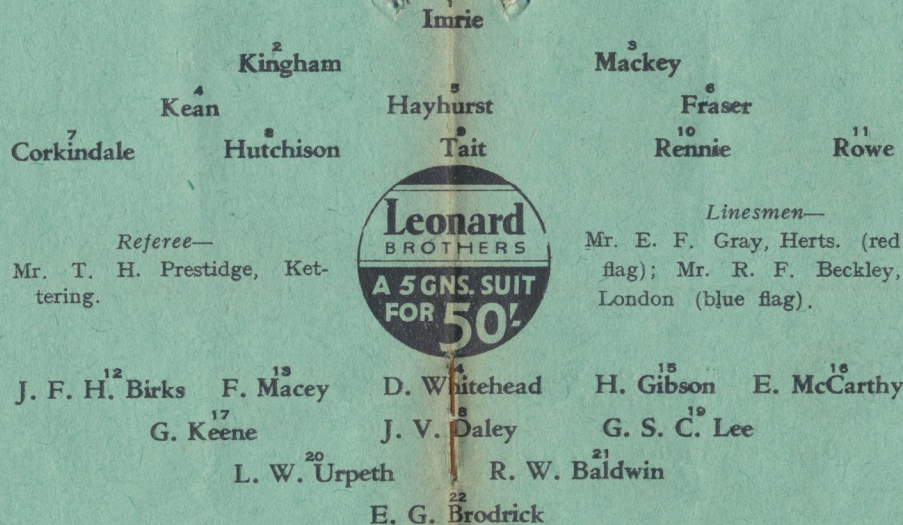
**LEAP YEAR**

Saucy! Witty!! Startling!!!

**LUTON TOWN.**

COLOUR—WHITE

RIGHT



LEFT

**KINGSTONIAN**

COLOURS—RED & WHITE.

LEFT

**EMPIRE  
BURY PARK RD**

TO-NIGHT—

MARION NIXON and RALPH BELLAMY  
in

**Rebecca of  
Sunnybrook Farm**

Also JANE BAXTER in  
FLAT No. NINE

**LUTON'S MOST  
EXCLUSIVE CINEMA**

RIGHT

**TAILORING FOR ALL**

The largest selection of Made-to-Measure and  
Ready-to-Wear OVERCOATS and SUITS in  
LUTON. Prices within reach of all.

Quality, Value and Satisfaction Guaranteed.

Your inspection invited without obligation to  
purchase.

**JOHN BRIGHT**  
OUTFITTERS LIMITED

"THE BELL," GEORGE ST., LUTON.

*The Tailor that suits you best*



Proprietors:  
Luton & Dunstable  
Greyhound Racing Club, Ltd.  
Room 4,  
Old G.P.O. Buildings,  
Cheapside, Luton.  
Phone: 366.

**GREYCYING**

**LUTON - Dunstable Rd. Track**

EVERY WEDNESDAY AND SATURDAY EVENING  
AT 7.30 P.M.

AND SUNDAYS AT 11.0 A.M. AND 6.30 P.M.

ADMISSION: 1/4, 2/6, incl. Tax & Card. Free Car Park

**LOOK**

Here for  
SPECIAL BARGAINS

GENT'S

**Solid Gold STRAP WATCH**

15-Jewel lever movement in latest square shapes. This  
is an exceptional offer from a large cash purchase.  
Worth £3 3s. od., and carries our usual Full Guarantee.

**F. HINDS, Ltd.** JEWELLERS  
EST. 1856

**5, PARK SQUARE, LUTON**

BRANCHES LONDON AND PROVINCES



# THE SEASON'S GOAL SCORERS

(Up to preceding Game).

Name.	3rd Div.	L.C.	F.	F.A. Cup.
Alderson	—	3	—	—
Bailey	—	1	1	—
Brown	—	6	1	—
Corkindale	—	4	1	—
Fraser	2	—	—	—
Hutchison	4	1	—	—
Kean	2	—	—	—
Mills	6	—	—	—
Nelson	2	4	1	—
Parish	—	7	—	—
Rennie	1	1	—	—
Rowe	2	—	—	—
Tait	9	—	—	—
Weaver	—	1	1	—
Whalley	1	4	—	—
	—	—	—	—
	—	—	—	—

# Today's Half-time Scores

The half-time scores are given in two lists. Copy the first list and then watch the Board for the second list, which will be given immediately.

CLUBS	Scores.	CLUBS	Scores.
First named is home team.		First named is home team.	
<b>First List.</b>		<b>Second List.</b>	
<b>F.A. CUP.</b>		<b>F.A. CUP.</b>	
A Bristol City v. Romford.		A Reading v. Brentford.	
B Cardiff City v. Bristol Rovers.		B Southend v. Exeter.	
C Orient v. Aldershot.		C Swindon v. Dulwich.	
D Palace v. Brighton.		D Torquay v. Bournemouth.	
E Dartford v. Yeovil.		E Walsall v. Mansfield.	
F Folkestone v. Norwich.		<b>LEAGUE.</b>	
G Guildford v. Coventry.		F Arsenal v. Middlesbrough.	
H Gillingham v. Wycombe.		G Leeds v. Chelsea.	
K Margate v. Ryde.		H Manchester v. Villa.	
L Merthyr v. Q.P. Rangers.		K Bradford v. 'Spurs.	
M Northampton v. Lloyds.		L Bury v. Plymouth.	
N Newport v. Ilford.		M Fulham v. Stoke.	
		N West Ham v. Charlton.	

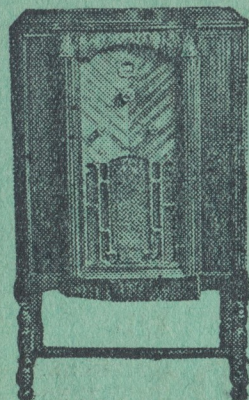
NOTE.—The letter in the Programme corresponds with the letter on the Board—thus A 0-1 means that the first-named Club has scored 0 and their opponents 1.

HEAR THEM  
FREE TODAY  
IN YOUR  
OWN HOME

## PHILCO

BALANCED UNIT RADIO

THE MOST  
SENSATIONAL  
PERFORMANCE  
IN RADIO . . .



MODEL 56 LOWBOY  
22 GNS.

The most amazing value in radio—the New Philco 5-valve balanced superhet for 16 gns. ! No other set at the price comes near it for tone, for range, for selectivity. See it and hear it—free—to-day !

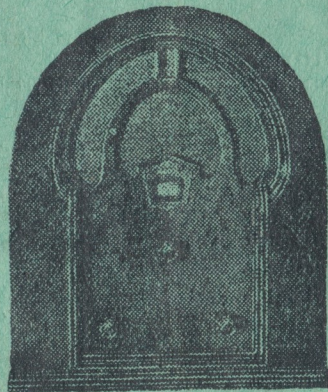
EASY TERMS  
ARRANGED

ACCREDITED DEALER—

## BROWN

36 Park St, Luton

PHONE 1809



MODEL 56 BABY GRAND  
16 GNS.

## BEST AFTER ALL TESTS

ASK  
FOR  
G. K.  
AT  
YOUR  
CLUB



DELIVERIES  
IN ALL  
DISTRICTS  
SEVERAL  
TIMES  
DAILY

	SMALL BOTTLES	LARGE BOTTLES	FLAGONS
G.K.	4½d.	8d.	1/3
G.K. MILD	4d.	7d.	1/1
<b>H. INWOOD, LTD.,</b> SOLE LOCAL AGENTS NEW BEDFORD ROAD 42, CHAPEL STREET 108, DUNSTABLE ROAD 'Phone 241. 'Phone 1425. 'Phone 241.			



# GRAND THEATRE · LUTON

TO-NIGHT—

MONDAY NEXT—at 6.45 & 9 p.m.

*Special Visit of the Big Super Revue*

## THE SHOW GIRL

The record-breaking attraction.

Featuring

CHARLES REGAN and  
JANET WARBURTON.

TO-MORROW,  
at 3 p.m.

## MEN ONLY

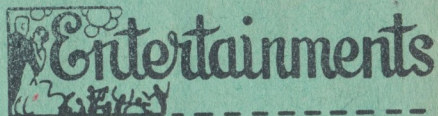
IN

St. Matthew's Church

SPEAKER:

REV. J. OAKES MONGER  
VICAR OF MARKYATE

INSTRUMENTALIST:  
MR. JOHN WARD



### WELLINGTON

"DANGEROUS GROUND"

"Dangerous Ground," the star feature at the Wellington to-night, presents in a new way the problem of the love-starved wife, whose husband is so absorbed in his profession that he has no time nor inclination for the social diversions and intimacies so vital to his wife's happiness. The husband's brother, an ex-convict, though this he keeps secret, gaily accepts the husband's suggestion to act as escort for his wife, with the inevitable result that they fall in love. Staunch loyalty to the husband and brother gives the story an unusual twist before its climax.

Jack Mulhall also appears to-night in "Passport to Paradise," the story of a banished young man who finds love and a new life abroad.

"THE SCOOP"

On Monday comes "The Scoop," the tale of a young journalist struggling for recognition. He is assisted by his sweetheart, who accidentally discovers a code giving a clue to the identity of the chief of a gang of criminals.

Rex Bell, Sally Blane and William Farnum also appear on Monday in "The Law of the Sea."

### GRAND

THE SAN MARINO BAND

The San Marino Accordion Band is the strong feature of this week's programme at the Grand Theatre, which reverted to twice-nightly performances for the present. Under Tony Stanella, it provides a musical programme of considerable variety and much attraction, with a smartness that many bands could copy. To some of their numbers there are dances by Coral and Dorian. The Storks, a pair of gymnasts, is the other most notable turn in the programme, for which Fred Walker is back again as the compere. Performances are at 6.45 and 9.

"THE SHOW GIRL"

This revue, sponsored by Samuel Walmsley and George L. Kaye, has been booked for next week, and is understood to be an outstanding production in this type of entertainment.



### PALACE

"LEAP YEAR"—"DECEIT"

As a critic has said, just to sit and hear Tom Walls talk is marvellously entertaining. It isn't what he says so much as the way he says it. Beautiful Anne Grey is the girl who has to sit and listen to his blarney in "Leap Year" at the Palace Theatre this week, and she does it delightfully. The performances of Jeanne Stuart and Edmund Breon are also in keeping with the spirit of the picture.

"With Cobham to Kivu" is now the second feature.

Owen Nares and Winifred Shotter are in next week's romantic offering, "The Love Contract" and "The Mouthpiece" is also to be screened.

### EMPIRE

"REBECCA OF SUNNYBROOK FARM"

Rebecca, the naive, wistful, impulsive girl whose adventures and romance have thrilled many in book and play, is portrayed by Marian Nixon in "Rebecca of Sunnybrook Farm" at the Empire to-night. Opposite her is Ralph Bellamy. In "Flat No. 9," a comedy of matrimonial misunderstandings, are Marjorie Brooks, Jane Baxter and Reginald Gardiner.

Mirth combines with melody in "Looking on the Bright Side," Gracie Fields's new picture which will be shown all next week. Some of the tunes are already popular. Gracie offers diverting entertainment. Fim McCoy will be seen in "Daring Danger."

### ALMA

"THE MAN I KILLED"—"WOMEN WHO PLAY"

Lionel Barrymore, Nancy Carroll and Phillips Holmes have the leading roles in "The Man I Killed," at the Alma Cinema this week. It is the story of a tragedy that becomes a beautiful romance, centring round a young French soldier who kills a German during the war and in after years becomes the firm friend of the father and the lover of the sweetheart of the dead man. A British picture, "Women Who Play," adapted from Frederick Lonsdale's brilliant stage success, "Spring Cleaning," is in support.

"Two Kinds of Women" and "Life Goes On" will be showing for the first half of next week and "The Misleading Lady" and "Working Girls" at the end.



TO-NIGHT—

SALLY BLANE & JAMESON THOMAS in

## Dangerous Ground

Also JACK MULHALL in a sparkling  
comedy-romance,

## PASSPORT TO PARADISE

## Join To-day

Fill up this Membership Form now and send, together with your Subscription, to the Registrar (Mr. Denis Wright, Cromwell Hill, Luton), or the Hon. Secs., Messrs. Gilder and Hunt, "News" Office, Luton.

I desire to be enrolled as a member of the above Club, and have pleasure in forwarding my subscription for the year ending August 31st, 1933. (The minimum subscription is 1/- annually).

Name.....

Address.....

.....  
.....



# How They Stand in the League

## DIVISION III (SOUTH)

	P	W	L	D	F	A	P
Brentford	15	12	1	2	34	15	26
Reading	15	8	2	5	38	21	21
Norwich	15	6	2	7	27	18	19
Exeter	15	8	4	3	32	23	19
Bristol R.	15	7	4	4	32	26	18
Palace	15	7	5	3	28	22	17
Rangers	15	6	5	4	30	31	16
Northampton	15	5	5	5	36	24	15
LUTON TOWN	15	6	6	3	29	27	15
Aldershot	15	6	6	3	24	23	15
Watford	15	6	6	3	23	23	15
Bournemouth	15	4	4	7	25	28	15
Southend	16	4	5	7	26	33	15
Bristol C.	15	5	6	4	28	24	14
Coventry	15	6	7	2	34	32	14
Torquay	15	5	7	3	32	28	13
Brighton	15	5	7	3	19	28	13
Orient	15	2	5	8	18	30	12
Gillingham	15	5	9	1	21	27	11
Swindon	15	4	9	2	25	39	10
Cardiff	15	4	9	2	26	41	10
Newport	16	2	9	5	21	45	9

## LONDON COMBINATION

	P	W	L	D	F	A	P
Fulham	20	13	1	6	50	23	32
Brentford	19	13	3	3	58	27	29
West Ham	19	11	4	4	67	31	26
Arpsenal	17	12	4	1	57	25	25
Swansea	19	10	7	2	35	29	22
Palace	19	9	6	4	45	39	22
Spurs	17	10	6	1	46	37	21
Coventry	18	9	7	2	49	34	20
Reading	18	8	7	3	41	41	19
Portsmouth	16	6	4	6	33	30	18
Rangers	18	7	7	4	34	37	17
Leicester	18	7	7	4	40	46	18
Millwall	18	5	6	7	38	47	17
Chelsea	17	6	7	4	23	39	16
Watford	14	7	6	1	37	35	15
Northampton	15	6	7	2	25	31	14
Southend	17	7	10	0	33	45	14
LUTON TOWN	18	4	9	5	32	35	13
Brighton	19	5	12	2	32	45	13
Orient	19	4	10	5	24	40	13
Charlton	14	3	6	5	25	31	11
Bristol City	18	3	11	4	29	42	10
Aldershot	18	3	11	4	23	51	10
Southampton	17	1	12	4	22	59	6

# REMEMBER YOUR FRIENDS : : :

Christmas time is the time of Remembrance for all your friends. A Christmas Card with a message of goodwill is a kindly thought, and nothing is so much appreciated.

We have a large selection of such Greeting Cards at moderate prices.

Call and see the specimens, without obligation.

## GIBBS, BAMFORTH & Co.

"Luton News" Buildings, Luton.

PHONE 1121 (3 LINES).

# WARREN'S WIRELESS

# SERVICE STANDS SUPREME

CONSULT THEM AT  
70, WELLINGTON ST.  
LUTON.

## W. F. BING

*Dyer & Cleaner*

70, Stuart St. - Luton

Cleaning Suits,  
Costumes and Coats  
a speciality  
from **3/6**

Suits, Coats and  
Costumes Sponged  
and Pressed

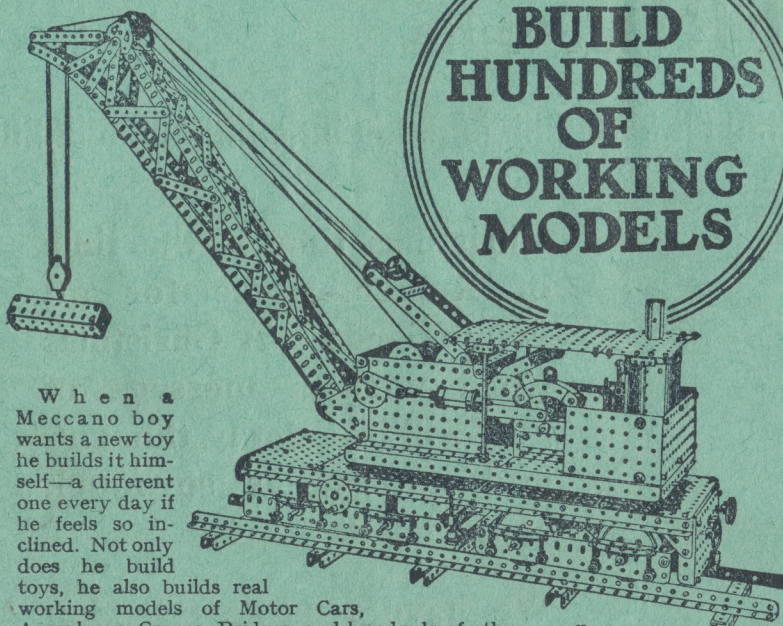
**1/6**

Mourning Orders Dyed in 24 hrs.  
VALET SERVICE



Largest selection of British Toys in the District

**BUILD  
HUNDREDS  
OF  
WORKING  
MODELS**



When a Meccano boy wants a new toy he builds it himself—a different one every day if he feels so inclined. Not only does he build toys, he also builds real working models of Motor Cars, Aeroplanes, Cranes, Bridges, and hundreds of other engineering structures. He builds them with Meccano parts, because they are real engineering parts in miniature. All the parts are standardised and the same units can be used in hundreds of different models.

Meccano, the most thrilling hobby in the world, becomes more fascinating every day.

Prices of  
Meccano  
Outfits  
from 2/-  
to 450/-

# MECCANO

FROM

## NEW HUDSON XMAS BAZAAR

THOUSANDS OF TOYS, DOLLS,  
GAMES, SPORTS GOODS, Etc.

10/12, CHAPEL STREET - - LUTON