



**TRUE - FORM**



**FOOTWEAR**

**The Best Value**  
IN THE TOWN

=====  
**BUY FROM THE ACTUAL MAKERS**

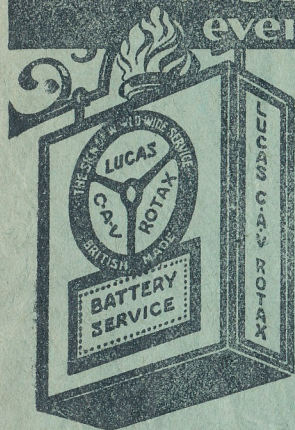
**LOCAL BRANCH:**

**44, GEORGE STREET.**

**Head Office and Factories, NORTHAMPTON.**



# The Biggest Battery Renewal Scheme ever offered to motorists



The introduction of this original scheme of battery service is of vital interest to all car owners whose cars are already equipped with a LUCAS, C.A.V. or ROTAX Battery. It is simple and straightforward, will eliminate much of the trouble hitherto experienced with battery failures and will definitely save time and expense. Moreover it is an addition to the existing 90 days free service covering defective materials or workmanship, under which any repair or replacement is carried out entirely free of charge.

Every Motorist provided for in one of the following  
**THREE ALTERNATIVE SCHEMES**

**20**  
MINUTES  
SERVICE

**Battery Exchanged For Brand New One During First Two Years.**

At any time during the first two years of a LUCAS, C.A.V. or ROTAX Battery's life we will, (provided there has been no obvious abuse or accidental damage) supply a brand new battery in exchange for your present one, you paying one twenty-fourth of the list price for each month since the battery to be replaced was first put into service. This service can be effected in 20 minutes.

**40**  
MINUTES  
SERVICE

**Battery Exchanged For Thoroughly-Reconditioned One.**

Your present LUCAS, C.A.V. or ROTAX Battery will be examined and a quotation given for necessary repairs which fixes the price at which a thoroughly reconditioned battery can be fitted and retained in exchange. This service can be effected in 40 minutes.

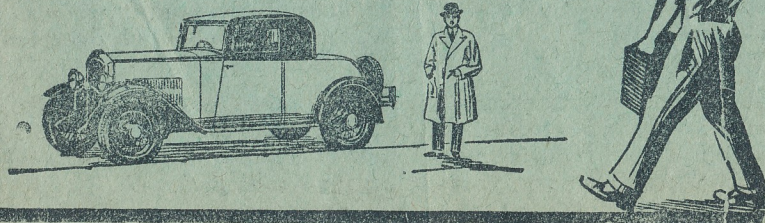
**TWO**  
HOURS  
SERVICE

**Any Make of Battery Replated or Repaired.**

Any make of battery of standard modern design can be overhauled and if necessary fitted with new plates in two hours, excepting in cases of exceptional rush periods.

**The Borough Engineering Works, Ltd.,  
28, ASHTON ROAD, LUTON.**

**LUCAS  
C.A.V.-ROTAX  
BATTERY SERVICE AGENTS**



# Luton Town Football & Athletic

Co., Ltd.

President:

Harry Arnold, Esq., C.A., J.P.

Directors:

Messrs E. G. Gibbs (Chairman), E. Mousse (Vice-Chairman),  
Willet Ball, P. A. Edwards, S. H. Godfrey, H. R. Hansell,  
C. Jeyes.

Secretary-Manager: Mr. Harold Wightman.

The League—Div. III.

**LUTON v. MANSFIELD.**

Friday, March 25th.

We are very pleased to welcome Mansfield Town to Luton on their first visit. It is problematical whether they will be in the Southern Section long, but everybody with knowledge of football knows what a plucky fight they made year after year to obtain admission to the Northern Section. They failed, but would probably agree that they were even more fortunate to get into the Southern Section than they would have been in the Northern.

They began quite well, but of late have not been fulfilling their early promise, though for a first venture, and made at a time when most of the "bargains" in players had been snapped up, they have nothing with which to reproach themselves.

They have shown a lot of courage in the acquisition of players, and will probably do better next season.

Their record may not be very bright, but that does not mean that the Town have an easy job this afternoon. Certainly we hope to make a good start for a successful Easter, and if our lads play as they did last Saturday, we should win all right.

Please take note of the following games:—

To-morrow (Saturday), Chelsea Reserves are due at Luton.

On Monday, Cardiff Reserves are our guests.

On Tuesday, Norwich City are to visit us for the postponed League game.

We want a big crowd at each match, for those of our supporters who read the remarks of the Chairman at the meeting for the election of directors will appreciate the serious position.

We cordially welcome Councillor Stewart Wilkinson and Mr. H. S. Hewson as new members of the directorate, and hope their arrival will mean a change of fortune for the Club. Both are very much interested in the Club, and Mr. Hewson has often found his way to matches far afield.

## CONTENTS.

Page	
3	Comments.
4/5	Fixtures and Results.
6	Luton Supporters' Club.
8/9	Teams and Officials.
10/11	News from all Quarters.
12	Entertainments.
13	Luton Red Cross.
16	Luton Supporters Club.



# Luton Town F.C. 1st.X1 Fixtures

## The League, Div. III (Southern).

Date.	Opponents.	Ground.	F.	A.	Date.	Opponents.	Ground.	F.	A.
Aug. 20	Reading	.....	1	2	Jan. 2	Reading	.....	6	1
" 31	Northampton	.....	H.	1	" 9	Wolverhampton W.	.....		
Sept. 5	Southend U	.....	H.	1		F.A. Cup	.....	1	2
" 9	Gillingham	.....	A.	3	" 11	Clapton Orient	.....	H.	1
" 12	Fulham	.....	A.	2	" 16	Southend United	.....	A.	1
" 14	Gillingham	.....	H.	2	" 23	Fulham	.....	H.	1
" 19	Thames	.....	H.	2	" 25	London U. (F)	.....	H.	4
" 26	Brentford	.....	A.	0	" 30	Thames	.....	A.	4
" 28	Northampton	.....	A.	2	Feb. 6	Brentford	.....	H.	1
Oct. 3	Exeter City	.....	H.	6	" 13	Exeter City	.....	A.	1
" 7	Derby County (F)	.....	H.	5	" 20	Coventry City	.....	H.	3
" 10	Coventry City	.....	A.	2	Mar. 5	Crystal P.	.....	H.	3
" 17	Watford	.....	H.	0	" 12	Bournemouth	.....	A.	1
" 24	Crystal P.	.....	A.	1	" 19	Queen's Park R.	.....	H.	4
" 31	Bournemouth	.....	H.	1	" 25	Mansfield T.	.....	H.	
Nov. 7	Queen's Park R.	.....	A.	1	" 26	Bristol Rovers	.....	A.	
" 14	Bristol Rovers	.....	H.	3	" 28	Mansfield T.	.....	A.	
" 21	Torquay United	.....	A.	2	" 29	Norwich City	.....	H.	
" 28	Swindon, F.A. Cup	.....	A.	5	April 2	Torquay Utd.	.....	H.	
Dec. 5	Swindon Town	.....	A.	2	" 9	Clapton O.	.....	A.	
" 12	Lincoln City F.A. Cup	.....	A.	2	" 13	Watford	.....	A.	
" 16	Lincoln (Replay)	.....	H.	4	" 16	Swindon Town	.....	H.	
" 19	Brighton	.....	A.	2	" 23	Norwich City	.....	A.	
" 25	Cardiff City	.....	H.	2	" 30	Brighton	.....	H.	
" 26	Cardiff City	.....	A.	1					

# Luton Town F.C. 2nd.X1 Fixtures

## London Combination.

Date.	Opponents.	Ground.	F.	A.	Date.	Opponents.	Ground.	F.	A.
1931.					1932.				
Aug. 29	Reading	.....	H.	6	Jan. 2	Reading	.....	A.	0
" 31	Swansea T.	.....	A.	1	" 16	Southend U.	.....	H.	0
Sept. 5	Southend U.	.....	A.	1	" 30	Fulham	.....	H.	5
" 7	Millwall	.....	A.	5	Feb. 4	Cambridge U. (F)	.....	A.	5
" 12	Arsenal	.....	H.	3	" 6	Brentford	.....	A.	1
" 19	Fulham	.....	A.	0	" 13	Portsmouth	.....	H.	3
" 21	Millwall	.....	H.	2	" 20	Coventry C.	.....	A.	0
" 26	Brentford	.....	H.	2	" 27	Brighton	.....	H.	3
" 28	Swansea T.	.....	H.	2	Mar. 10	Leicester C.	.....	A.	2
Oct. 3	Portsmouth	.....	A.	1	" 12	Tottenham H.	.....	H.	3
" 10	Coventry C.	.....	H.	1	" 16	Arsenal	.....	A.	0
" 17	Brighton	.....	A.	1	" 19	Clapton O.	.....	A.	1
" 24	Leicester C.	.....	H.	5	" 25	Cardiff C.	.....	A.	
" 31	Tottenham H.	.....	A.	2	" 26	Chelsea	.....	H.	
Nov. 7	Clapton O.	.....	H.	3	" 28	Cardiff C.	.....	H.	
" 14	Chelsea	.....	A.	2	April 2	West Ham U.	.....	A.	
" 21	West Ham U.	.....	H.	3	" 9	Queen's Park R.	.....	H.	
" 28	Queen's Park R.	.....	A.	2	" 16	Southampton	.....	A.	
Dec. 5	Southampton	.....	H.	2	" 23	Crystal P.	.....	H.	
" 12	Crystal P.	.....	A.	0	" 30	Charlton A.	.....	A.	
" 19	Charlton A.	.....	H.	3	May 7	Beds Premier Cup. Final,			
" 26	Watford	.....	H.	3		Biggleswade & Dist.	.....	H.	

If you want a WIRELESS  
THINK OF  
**BOND'S**  
98/100 CASTLE ST.  
LUTON

ALL RELIABLE MAKES IN STOCK

**Radio Gramophones**  
from 14 Gns.

CASH OR EASY TERMS.

EFFICIENT Hire Car SERVICE  
'Phone 858  
GARAGE :: PETROL, ETC.

**MARES**  
for  
**MEN'S**  
**WEAR**

\* \*

65-67, George St., and  
187, Dunstable Rd., Luton

CHARLES MARES, LTD.



PHONE:  
288

PHONE:  
288

**THE MOST UP-TO-DATE  
FLEET OF MOTOR COACHES  
IN THE DISTRICT.**

**PIONEERS OF MOTOR COACH TRAVEL**

Let us quote you for your Outing.

BOOKING OFFICE: 25, PARK STREET WEST, LUTON.



# Luton Football Supporters Club.

Chairman: MR. HORACE I. GODFREY.

Vice-Chairman: MR. OSCAR E. HART.

Hon Treasurer: MR. ALBERT E. NICHOLLS.

Hon. Registrar: MR. DENIS WRIGHT, Cromwell Hill, Luton.

Joint Hon. Secretaries:

MESSRS. J. J. HUNT and C. W. GILDER, "News" Office, Luton.

I desire to be enrolled as a member of the above club and have pleasure in forwarding herewith my subscription for the year ending August 31st, 1932. (The minimum subscription is 1s. annually).

Name.....

Address.....

Date..... Amount.....

Please fill in and send to the Secs., the Registrar, or hand to any member of the Council of the Supporters Club on the ground. The membership card will be forwarded to you by the Registrar.

NOTE.—If Badge is required, please add another 1/- to your subscription.

# TWO OF THE TOWN'S DEFENDERS



McGINNIGLE



HODGSON



PIANOS  
OF  
QUALITY

THE

LUTON PIANO CO.'S

"NO DEPOSIT" TERMS  
ARE THE BEST.

THE FOLLOWING ARE A FEW OF  
OUR BARGAIN OFFERS:

£6—WORNUM PIANO; rosewood case. Bargain. Yours for 1/6 weekly.

£8—LYON PIANO; walnut case; nice tone. Yours for 2/- weekly.

£12—ALLANSON PIANO; rosewood case, good condition. Yours for 2/6 weekly.

£16—MORNINGTON PIANO; clear, full tone; a real bargain. Yours for 2/6 weekly.

GRAMOPHONES:

FINEST SELECTION IN THE DISTRICT  
Call now and hear the new season's models

TERMS FROM 2/- WEEKLY.

**LUTON PIANO CO.**

(Opposite WELLINGTON STREET (Opposite  
Cinema) LUTON Cinema)

**WARREN'S  
WIRELESS  
SERVICE  
STANDS  
SUPREME**

CONSULT THEM AT

70, WELLINGTON ST.  
LUTON.

CHALLENGE CUP

GOLD MEDAL

CHAMPIONSHIP

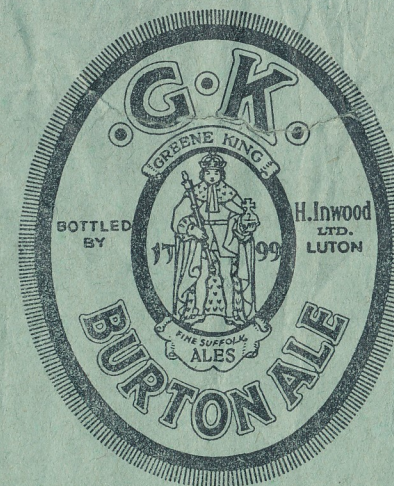
ALL WON AT THE 1930 BREWERS' EXHIBITION BY

G·K·  
MILD

A Good Drink

at a

Cheaper Price.



Ask for  
it at  
your Club!

The finest  
Ale in the  
District.

The Best Value.

SOLE  
LOCAL  
AGENTS

(Light or Dark)  
**H. INWOOD, LTD.,**

SOLE  
LOCAL  
AGENTS

NEW BEDFORD ROAD 42, CHAPEL STREET 108, DUNSTABLE ROAD  
'Phone 241. 'Phone 1425. 'Phone 241.



It's Still a Good Thing!

**J. W. GREEN'S**  
**NOTED LUTON ALE**  
 Quality and Excellence Maintained.

When you're on a good thing, stick to it.

J. W. GREEN, LTD., THE BREWERY, LUTON.

TELEPHONE: LUTON 1454.

# ALMA KINEMA LUTON

NEXT WEEK—

CLARK GABLE in  
**SPORTING  
 BLOOD**

\* \* \*  
 SYDNEY PHASEY AND THE  
 ALMA ORCHESTRA.

**THE GREATEST SHOW  
 FOR MILES!**

# JANES BROS.

ENGINEERS TO THE  
 HAT TRADE SINCE  
 1888

High Town Road - - Luton  
 PHONE 242

# PALACE

NEXT WEEK—

EDNA BEST IN

## THE CALENDAR

*Reg Fisher* AND *HIS RASCALS OF RHYTHM.*

### LUTON TOWN.

COLOUR—WHITE

RIGHT

<sup>1</sup>Imrie

<sup>2</sup>Kingham

<sup>3</sup>Hodgson

<sup>4</sup>Kean

<sup>5</sup>McGinnigle

<sup>6</sup>Fraser

<sup>7</sup>Cupit

<sup>8</sup>Tait

<sup>9</sup>Loasby

<sup>10</sup>Rennie

Referee—

Mr. T. J. Botham, Walsall.



Linesmen—

Mr. F. Ratcliff (red flag);  
 Mr. A. L. R. Bellion (blue flag).

<sup>12</sup>Bowater

<sup>13</sup>Featherby

<sup>14</sup>Johnson

<sup>15</sup>Brown

<sup>16</sup>Storer

<sup>17</sup>Blackburn

<sup>18</sup>Robinson

<sup>19</sup>Readman

<sup>20</sup>England

<sup>21</sup>Clifford

<sup>22</sup>Staples

### MANSFIELD TOWN.

COLOUR—BLUE.

LEFT

LEFT

# EMPIRE BURY PARK RD

SATURDAY

Thrilling Mystery Drama:—

## MURDER AT MIDNIGHT

with

AILEEN PRINGLE, HALE HAMILTON.  
 Also Glenn Tryon in NECK & NECK.

British Movietone News: Comedies.

MONDAY NEXT—

CHARLES FARRELL & MADGE EVANS  
 in

## HEARTBREAK

Also Sally O'Neill in THE BRAT.

## LUTON'S MOST EXCLUSIVE CINEMA

RIGHT

### THE HOUSE for RINGS



4/6 to £4 10

WEDDING RINGS

9 ct. and 22 ct.  
 gold, 15 sizes in  
 20 prices, includ-  
 ing 'Court' Shapes.



£1 10 to £50

DIAMOND RINGS

Beautiful stones  
 securely set in 18  
 ct. gold and  
 platinum.



3/6 to £4

SIGNET RINGS

9 ct. and 18 ct.  
 gold, in a vast  
 range of the  
 latest designs.

## F. HINDS, Ltd.

5, PARK SQUARE, LUTON. ESTABLISHED 1856.  
 Branches in London and Provinces.

# A. N. BROWN

Wireless and Electrical Stores

## 36 PARK STREET

LUTON :: PHONE LUTON 1809

## BATTERY CHARGING STATION



Proprietors:  
 Luton & Dunstable  
 Greyhound Racing Club, Ltd.  
 Room 4,  
 Old G.P.O. Buildings,  
 Cheapside, Luton.  
 'Phone: 366.

## GREYCEING

### LUTON - Dunstable Rd. Track

EVERY WEDNESDAY AND SATURDAY EVENING

AT 7.30 P.M.

AND SUNDAYS AT 11.0 A.M. AND 6.30 P.M.

ADMISSION: 1/4, 2/6, incl. Tax & Card. Free Car Park



# News from all Quarters

Old friends will regret to hear that Tom Boyle's health has failed, and he is now in a nursing home near the scene of his former football triumphs after he left Yorkshire and became the leader of Burnley's great side and the idol of East Lancashire. Since his retirement Tom has been in Blackpool, but recently he has been in his old haunts, and it is well that when he broke down there were friends handy to see he was properly looked after.

The outstanding objection to paying footballers at so much a match is simply that you cannot look at professional football in terms of matches. During my days as a manager a good many lads came to me who seemed to have the idea that a footballer's life consisted of playing a match a week and pleasing himself for the rest of the time. Nothing is further from the truth. The root of all professionalism is training and practice, and nothing else. I mean, the only difference between the good amateur and the good professional is that the professional trains and practices more.—Andy Ducat.

George Waterfield is one of Burnley's two old servants, the other being Louis Page, who has just been transferred. The former went to Turf Moor as an outside-left, and when he was converted into a back Page took his place on the wing. Waterfield might have gone elsewhere within the last few months had not his wife belonged to Burnley and been so attached to it that she wished to stay there.

"Jerry" Dawson, who was Burnley's goalkeeper for twenty years, is now a scout for his old club, as well as showing the young idea how to keep the ball from going between the posts. Jerry still retains that rosy colour, so much so that he looked as though he ought to be in the thick of things to-day. Turf Moor could do with a change of fortune, for the old club is in a bad way at present.

A well-known Lancashire official who had charge of a Second Division match recently confessed to me that he was greatly mystified on at least two occasions by the extraordinary interpretation placed on the rules.

# News from all Quarters

In the course of the game there were two incidents associated with the taking of corner kicks. In the first case, one of the defenders approached to within a yard of the flag and stood on the goal line while the opposing outside-right was preparing to take the kick.

The referee at once went across to the defender, who was rather startled when informed that he would have to move at least ten yards away from the kicker before he would allow the corner kick to be taken in accordance with the regulations.

In the second case the two backs proceeded to the back of the net behind their goalkeeper, and when the ball came across they ran out and leaped into the air with the object of getting an advantage over the attacking forwards. Unfortunately for the players the referee was very much awake and he refused to allow the game to proceed until the two backs had re-entered the field.

After the match the referee informed me that he made it his duty to institute inquiries into the new practices, and was surprised to find that the players had been specially studying tactics. At the same

time he was more astonished to learn that certain other referees had permitted such methods, but he did not leave the ground until he had made it plain that they were illegal and contrary to the regulations.

"Cornish Referee" writes me from Penzance, asking "whether off-side is determined by the position a player is in when he receives the ball, or the position he was in when the ball was last played."

This is one of the questions the answer to which is always fresh to some people. If the ball is played forward by an attacker and goes to one of his own side, the latter must have had two opponents between himself and the goal-line when the ball was last played, otherwise he is out of play.

If the ball is played back to an attacker by a player who is on-side, the question for the referee to decide is where was the player when the ball was last played. If he had two opponents between himself and the goal-line, then all is correct, and if he was behind the ball when it is last played by one of his side, then he is also in a legitimate position.—Mr. J. T. Howcroft, the famous referee.

**Charnley**  
and Sons

Qualified  
Ophthalmic Opticians

SIGHT-TESTING  
EYEGLASSES  
SPECTACLES  
- REPAIRS -

15, Wellington Street  
LUTON

**W. F. BING**

*Dyer & Cleaner*

70, Stuart St. - Luton

Cleaning Suits,  
Costumes and Coats  
a speciality

from **4/6**

Suits, Coats and  
Costumes Sponged  
and Pressed

**1/6**

Mourning Orders Dyed in 24 hrs.  
VALET SERVICE

**FOR BETTER WIRELESS**

— TRY —

**MASTERPHONE**  
and **ELECTRIC Co.**

110 BURY PARK Rd., LUTON



PHILIPS' ALL-ELECTRIC RECEIVERS

Stockists of  
Pye, Lissen,  
Amplion,  
Ultra, Phillips,  
Kolster-Brandes  
Gecophone,  
Ormond,  
Cosser, Ecko,  
and all  
Electric  
Receivers.  
Also latest  
Radio  
Gramophones  
and  
Portables.

Service  
Department.  
Electrical  
Installations.

**EASY  
TERMS**

See our wide  
range of  
Receivers and  
Components  
before  
Purchasing.

Ediswan  
Service Station.

**LUTON'S LEADING RADIO ENGINEERS**



# GRAND

THEATRE • LUTON

Easter Week

## The Life Machine

GET THE THEATRE HABIT.

# PLAZA

(HIGH TOWN)

General Manager - - - W. J. Godleman.

FOR THE  
BEST  
PICTURES

# WELLINGTON

CINEMA

Easter Monday.

## Constance Bennett in Bought

# LUTON GREYHOUND ASSOCIATION

Proprietors: The Associated Sports Grounds, Ltd.

## NEW BEDFORD TRACK (NEAR GOLF LINKS)

## EASTER ARRANGEMENTS

GOOD FRIDAY, at 11 a.m.

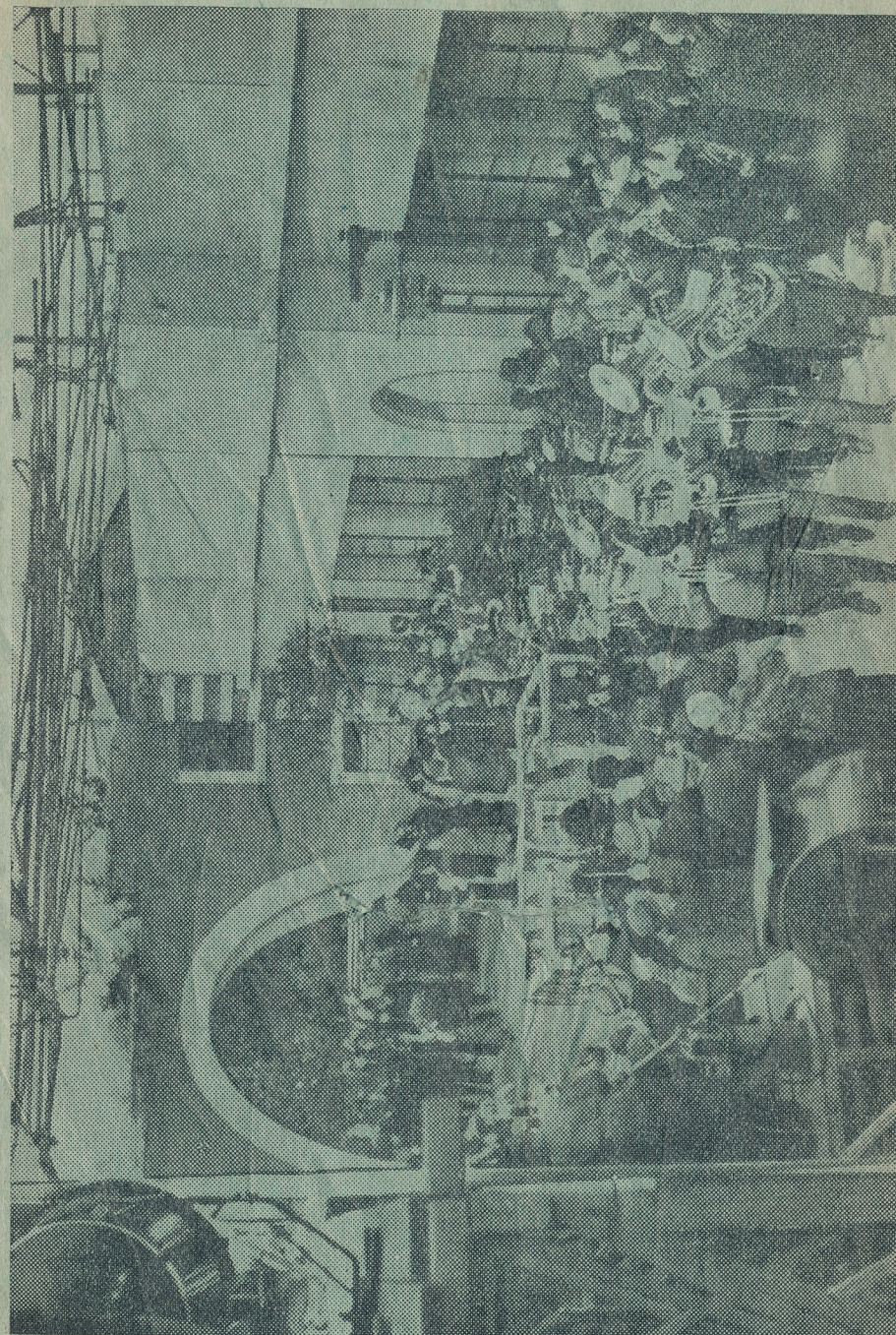
EASTER MONDAY, at 3.15 p.m.

Other Meetings as Usual.

LUTON'S PREMIER TRACK. Out grading ensures better prices than any other Track in the District. Visit us and compare for yourselves.

'Buses from Manchester Square.

Admission (including Tax), 1/-.  
Card 3d.



A scene from "The Mayor's Nest" in which the Luton Red Cross Band are taking a part.





## CENTRAL RESTAURANT

20, 22, 24, Cheapside,  
LUTON.

PHONE 172.

Luton's oldest, but  
still the best.

We can seat 200.  
Quick Service, Best  
Quality and Reason-  
able Prices.

Support Local Traders.

PROPRIETOR: S. G. PRIMETT

## F. J. COOPER

251, High Town Road

16 & 20-Seater  
COACHES  
— FOR HIRE —

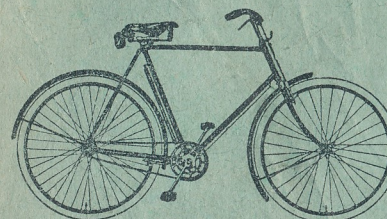
*Travel by the Cosy for  
Safety and Reliability*

Book at  
251, High Town Rd., or  
Loveday's, 15a, Waldeck Rd.

PHONE 731

# CHOICE!

## NEW HUDSON

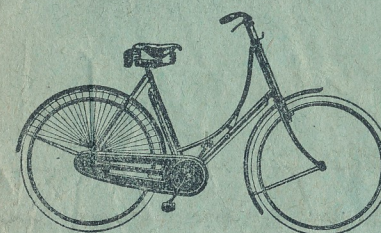


## 1932 Models

represent the highest standard in  
wide choice of models, superior  
design and finish and unbeatable  
value.

There's a New-Hudson for  
every purse and every purpose.  
Easiest pay-as-you-ride terms.

Prices from £4 19s. 6d. Cash  
or on first payment of 10/-,  
balance weekly or monthly.



## MODELS:

### GENTS'

Imperial Roadster ...	£4-19-6
Imperial Light Roadster	£4-19-6
Popular Racer .....	£4-19-6
Imperial Club .....	£5 -5-0
Gents' All-weather .....	£6-12-6
Gent's Super Chrome	£6-17-6
Gent's Speed .....	£7-17-6
Gent's Light Tourist ...	£7-17-6
Tradesman's Carrier .....	£7 -5-0

### Special Tradesman's

Carrier	£8-12-6
Boy's .....	£4-10-0

### LADIES'

Imperial Roadster .....	£5 -7-6
Lady's All-weather .....	£6-15-0
Lady's Super Chrome ...	£6-19-6
Girl's .....	£4-15-0
All models fitted with Dunlop tyres and complete equipment.	

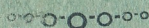
LUTON'S LEADING CYCLE AGENTS

*A. G. Partridge & Co*  
10-12, CHAPEL ST.  
LUTON  
PHONE 234  
NEW HUDSON DEPOT



# Luton Football Supporters Club

BROUGHT YOU  
MARIUS WINTER'S BAND



ON

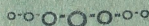
WEDNESDAY, MARCH 30th

We shall present

PERCIVAL MACKEY  
(HIMSELF)  
AND HIS BAND

(From the Dominion Theatre, London).

AT THE ASSEMBLY HALL  
(Waller Street, Luton)



At Popular Prices.

Floor 2/6 ; Double Tickets (if purchased before the day) 4/6 ;  
Balcony only 1/-, including tax.

Tickets from Messrs. S. Farmer & Co., Wellington Street ; A. E. Nicholls, Mill Street ; Denis Wright, 4, Cromwell Hill ; M. Sills, 13, Butlin Road ; W. Pease, 287, Hitchin Road ; or from 92, Chapel Street.

GET YOUR DOUBLE TICKET NOW.