



**TRUE - FORM**



**FOOTWEAR**

**The Best Value**  
IN THE TOWN

=====  
**BUY FROM THE ACTUAL MAKERS**

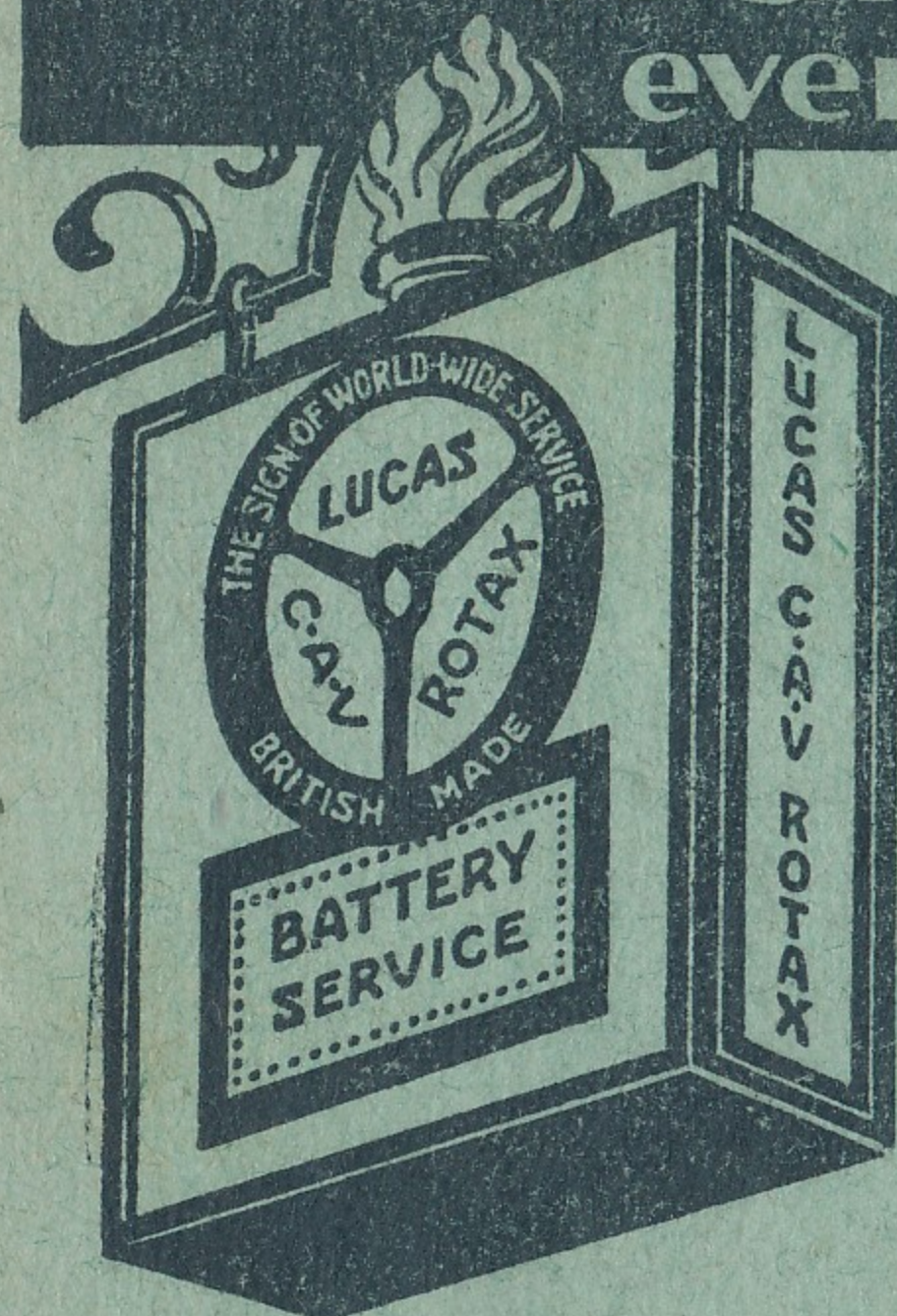
LOCAL BRANCH:

**44, GEORGE STREET.**

Head Office and Factories, NORTHAMPTON.



# The Biggest Battery Renewal Scheme ever offered to motorists



The introduction of this original scheme of battery service is of vital interest to all car owners whose cars are already equipped with a LUCAS, C.A.V. or ROTAX Battery. It is simple and straightforward, will eliminate much of the trouble hitherto experienced with battery failures and will definitely save time and expense. Moreover it is an addition to the existing 90 days free service covering defective materials or workmanship, under which any repair or replacement is carried out entirely free of charge.

Every Motorist provided for in one of the following  
**THREE ALTERNATIVE SCHEMES**

**20**  
MINUTES  
SERVICE

**Battery Exchanged For Brand New One During First Two Years.**

At any time during the first two years of a LUCAS, C.A.V. or ROTAX Battery's life we will, (provided there has been no obvious abuse or accidental damage) supply a brand new battery in exchange for your present one, you paying one twenty-fourth of the list price for each month since the battery to be replaced was first put into service. This service can be effected in 20 minutes.

**40**  
MINUTES  
SERVICE

**Battery Exchanged For Thoroughly-Reconditioned One.**

Your present LUCAS, C.A.V. or ROTAX Battery will be examined and a quotation given for necessary repairs which fixes the price at which a thoroughly reconditioned battery can be fitted and retained in exchange. This service can be effected in 40 minutes.

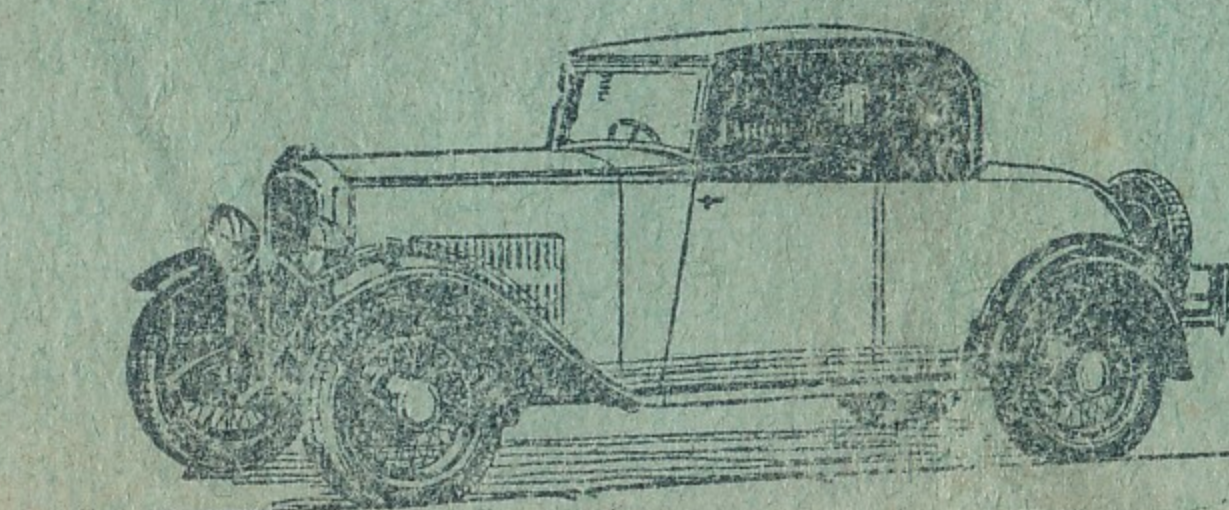
**TWO**  
HOURS  
SERVICE

**Any Make of Battery Replated or Repaired.**

Any make of battery of standard modern design can be overhauled and necessary fitted with new plates in two hours, excepting in cases of exceptional rush periods.

**The Borough Engineering Works, Ltd.,  
28, ASHTON ROAD, LUTON.**

**LUCAS  
C.A.V.-ROTAX  
BATTERY SERVICE AGENTS**



## Luton Town Football & Athletic Club Ltd

President:

Harry Arnold, Esq., C.A., J.P.

Directors:

Messrs. E. G. Gibbs (Chairman), E. Mouse (Vice-Chairman),  
Willet Ball, P. A. Edwards, S. H. Godfrey, H. R. Hansell,  
C. Jeyes.

Secretary-Manager: Mr. Harold Wightman.

League—Div. III.

LUTON v. NORTHAMPTON.

Monday, Aug. 31st.

There was a tremendous cheer on the Town ground when the half-time scores went up on Saturday. Alas! this only heightened one's sense of disappointment when the result came through. Let us assure the Town supporters, and confirmation will have been gleaned from the Sunday papers, that the Town did not deserve defeat. Those who knew the full facts could only sympathise with the Town, for while Reading's first goal was due in a large measure to an error of judgment, the second and winning goal would have been saved but for the rather severe

injury sustained by George Harford. Luckily, he did not have much to do after he was hurt in the first half, and this shot was very close to him, but he could not bend quickly enough owing to his knee, which was badly kicked. It will be gathered from his absence how serious the hurt was, and we were in a quandary for another goalkeeper, as Ward has not yet had sufficient experience for the more important games, though he did well on Saturday.

This morning we engaged James Imrie, who has kept goal for two seasons for Crystal Palace and before then was with Kettering. He is 6ft. 1in. and weighs 13st

After the fine display of Yardley on Saturday his inclusion was anticipated by many supporters. Jimmy was playing very well at the end of last season, and scoring goals, though at centre-forward. We hope he will make his mark to-night. There will also be a change at centre-half, not from any reason of panic, but because the players named as providing the possible pivot this evening did so very well on Saturday. Gale has given almost convincing proof that he is about all right again, and Hale is doing really well.

We cordially welcome our friends from Northampton, and trust that we shall have a good game. Their usual centre-half, Maloney, is not yet recovered from illness, and will not be able to play, but they gave a good account of themselves on Saturday when they beat Cardiff City.

The Reserves did very well in beating Reading by six goals clear, and they are engaged at Swansea this evening. Wales and Chapman have gone and although the "Swans" beat Cardiff Reserves at Ninian Park on Saturday, we shall look for further good news and a couple of Combination points.

### CONTENTS.

Page	
3	Comments.
4/5	Fixtures and Results.
6	Portrait Gallery.
6	Query Corner.
7	Portraits.
8/9	Teams and Officials.
10	News from all Quarters.
11	Luton Supporters' Club.
12/13	Entertainments.
14	League Tables.



# Luton Town F.C. 1st.X1 Fixtures

## The League, Div. III (Southern).

Date.	Opponents.	Ground.	F.	A.	Date.	Opponents	Ground.	F.	A.
1931.					1932.				
Aug. 29—Reading	.....A...	1	2		Jan. 2—Reading	.....H...			
„ 31—Northampton	.....H...				„ 9—Clapton Orient	.....H...			
Sept. 5—Southend U.	.....H...				„ 16—Southend United	.....A...			
„ 9—Gillingham	.....A...				„ 23—Fulham	.....H...			
„ 12—Fulham	.....A...				„ 30—Thames	.....A...			
„ 14—Gillingham	.....H...				Feb. 6—Brentford	.....H...			
„ 19—Thames	.....H...				„ 13—Exeter City	.....A...			
„ 26—Brentford	.....A...				„ 20—Coventry City	.....H...			
„ 28—Northampton	.....A...				„ 27—Watford	.....A...			
Oct. 3—Exeter City	.....H...				Mar. 5—Crystal P.	.....H...			
„ 10—Coventry City	.....A...				„ 12—Bournemouth	.....A...			
„ 17—Watford	.....H...				„ 19—Queen's Park R.	.....H...			
„ 24—Crystal P.	.....A...				„ 25—Mansfield T.	.....H...			
„ 31—Bournemouth	.....H...				„ 26—Bristol Rovers	.....A...			
Nov. 7—Queen's Park R.	.....A...				„ 28—Mansfield T.	.....A...			
„ 14—Bristol Rovers	.....H...				April 2—Torquay Utd.	.....H...			
„ 21—Torquay United	.....A...				„ 9—Clapton O.	.....A...			
„ 28—F. A. Cup.					„ 16—Swindon Town	.....H...			
Dec. 5—Swindon Town	.....A...				„ 23—Norwich City	.....A...			
„ 12—Norwich City	.....H...				„ 30—Brighton	.....H...			
„ 19—Brighton	.....A...								
„ 25—Cardiff City	.....H...								
„ 26—Cardiff City	.....A...								

# Luton Town F.C. 2nd.X1 Fixtures

## London Combination.

Date.	Opponents.	Ground.	F.	A.	Date.	Opponents	Ground.	F.	A.
1931.					1932.				
Aug. 29—Reading	.....H...	6	0		Jan. 2—Reading	.....A...			
„ 31—Swansea T.	.....A...				„ 9—Watford	.....A...			
Sept. 5—Southend U.	.....A...				„ 16—Southend U.	.....H...			
„ 7—Millwall	.....A...				„ 23—Arsenal	.....A...			
„ 12—Arsenal	.....H...				„ 30—Fulham	.....H...			
„ 19—Fulham	.....A...				Feb. 6—Brentford	.....A...			
„ 21—Millwall	.....H...				„ 13—Portsmouth	.....H...			
„ 26—Brentford	.....H...				„ 20—Coventry C.	.....A...			
„ 28—Swansea T.	.....H...				„ 27—Brighton	.....H...			
Oct. 3—Portsmouth	.....A...				Mar. 5—Leicester C.	.....A...			
„ 10—Coventry C.	.....H...				„ 12—Tottenham H.	.....H...			
„ 17—Brighton	.....A...				„ 19—Clapton O.	.....A...			
„ 24—Leicester C.	.....H...				„ 25—Cardiff C.	.....A...			
„ 31—Tottenham H.	.....A...				„ 26—Chelsea	.....H...			
Nov. 7—Clapton O.	.....H...				„ 28—Cardiff C.	.....H...			
„ 14—Chelsea	.....A...				April 2—West Ham U.	.....A...			
„ 21—West Ham U.	.....H...				„ 9—Queen's Park R.	.....H...			
„ 28—Queen's Park R.	.....A...				„ 16—Southampton	.....A...			
Dec. 5—Southampton	.....H...				„ 23—Crystal P.	.....H...			
„ 12—Crystal P.	.....A...				„ 30—Charlton A.	.....A...			
„ 19—Charlton A.	.....H...								
„ 26—Watford	.....H...								

If you want a WIRELESS  
THINK OF  
**BOND'S**  
98/100 CASTLE ST.  
LUTON

ALL RELIABLE MAKES IN STOCK.

**Radio Gramophones**  
from 14 Gns.

CASH OR EASY TERMS.

EFFICIENT Hire Car SERVICE  
'Phone 858  
GARAGE :: PETROL, ETC.

**MARES**  
**THE STORE**

for

**MEN'S**  
**WEAR**

Distinctive Styles.  
Moderate Prices.

o-o-o-o-o

65-67, George St., and  
187, Dunstable Rd., Luton

CHARLES MARES, LTD.



## FORTHCOMING TRIPS.

Sunday—Weekly Returns to	
Bournemouth	7 a.m., 20/-
Yarmouth	7 a.m., 20/-
Southsea	7.30 a.m., 18/-

Also each Saturday and Sunday during September.

Wednesday, September 3rd—Southend	8.30 a.m., 6/6
Thursday, September 4th—Waddesdon Flower Show	10 a.m., 3/6
Eastbourne	7.30 a.m., 8/6

1931 Saloon Coaches For Hire. Daimler Cars at your service.

All seats numbered and reserved. Book early and choose your seats.

BOOKING OFFICE: 25, PARK STREET WEST, LUTON.



# Our Portrait Gallery

HAROLD WIGHTMAN  
Secretary-Manager



comes with the highest credentials, proven as a player, as a coach, and in no small degree as a team manager. As a player he won esteem by his personal character and skill, and in his later years devoted himself to a study of the managerial side of the game. Unassuming yet enthusiastic, it will be no fault of his if Luton's return to Second Division Football is long delayed.

# Our Query Corner

W.S., Luton.—This will give the necessary information :—

## Individual Goal-scoring Records :—

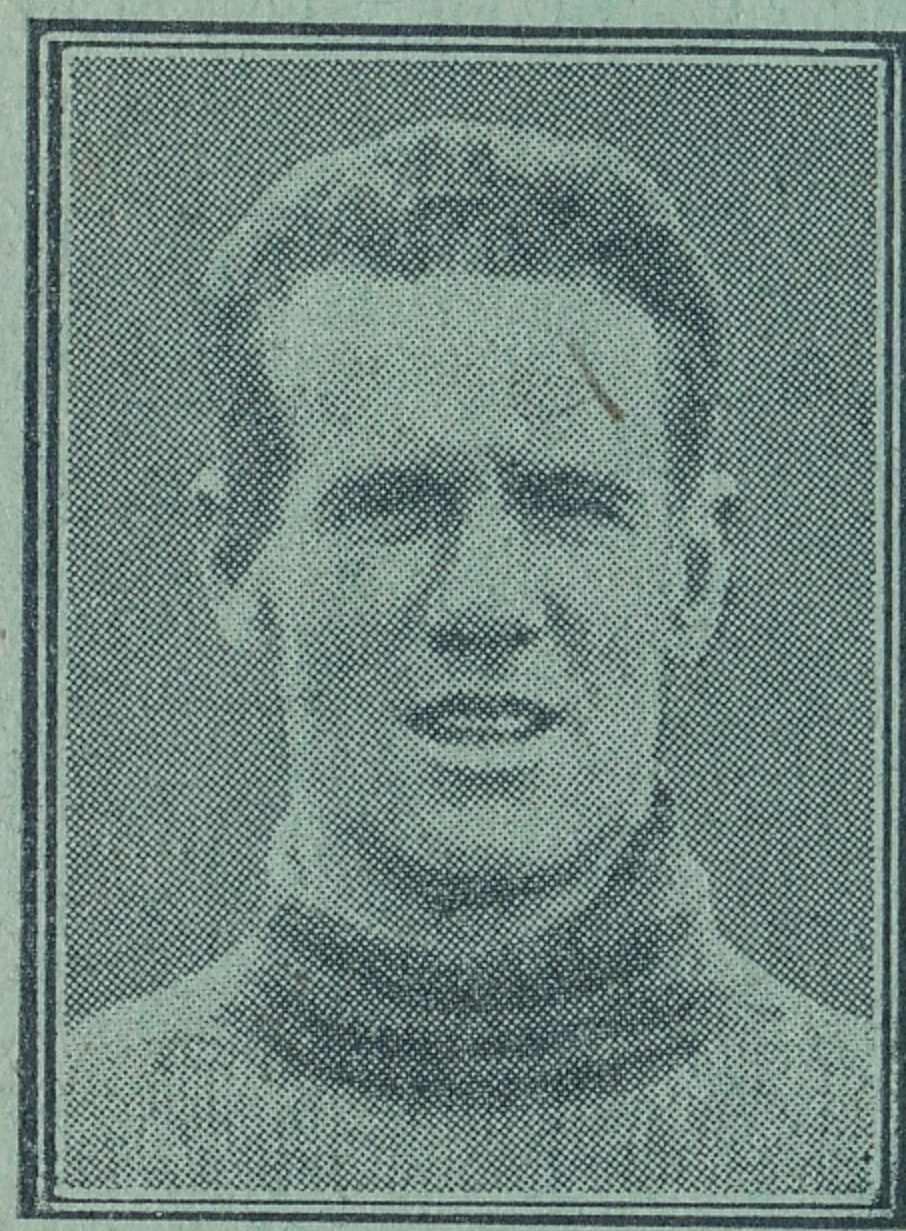
Player.	League. Div.	Sea'n. Gls.
W. R. Dean (Everton)	English 1st	1927-28 60
G. Camsell (Middlebrough)	English 2nd	1926-27 59
J. Cookson (Chesterfield)	English 3rd(N)	1925-26 44
D. H. Morris (Swindon)	English 3rd(S)	1926-27 46
J. M'Grory (Celtic)	Scottish 1st	1926-27 49
J. Smith (Ayr U.)	Scottish 2nd	1927-28 66
J. Bambrick (Linfield)	Irish —	1929-30 101

L.M.S.—Scottish Cup winners since 1911-12 are :

- 1911-12—Celtic at Clyde, 2—0.
- 1912-13—Falkirk beat Raith Rovers, 2—0.
- 1913-14—Celtic beat Hibernians 4—1; after draw 0—0
- 1914-15 to 1918-19—Competition suspended.
- 1919-20—Kilmarnock beat Albion Rovers, 3—2.
- 1920-21—Partick beat Rangers, 1—0.
- 1921-22—Morton beat Rangers, 1—0.
- 1922-23—Celtic beat Hibernians, 1—0.
- 1923-24—Airdrie beat Hibernians, 2—0.
- 1924-25—Celtic beat Dundee, 2—1.
- 1925-26—St. Mirren beat Celtic, 2—0.
- 1926-27—Celtic beat East Fife, 3—1.
- 1927-28—Rangers beat Celtic, 4—0.
- 1928-29—Kilmarnock beat Rangers, 2—0.
- 1929-30—Rangers beat Partick 2—1; after draw 1—1.
- 1930-31—Celtic beat Motherwell 4—2; after draw 2—2

Queries for this column should reach "Luton News" Office by Wednesday, 10 a.m. Address: Query Corner.

# TWO OF LUTON'S DEFENDERS



HARFORD



GALE



## PIANOS OF QUALITY

THE  
LUTON PIANO CO.'S  
"NO DEPOSIT" TERMS  
ARE THE BEST.

- THE FOLLOWING ARE A FEW OF OUR BARGAIN OFFERS:
- £6—WORNUM PIANO; rosewood case. Bargain. Yours for 1/6 weekly.
  - £8—LYON PIANO; walnut case; nice tone. Yours for 2/- weekly.
  - £12—ALLANSON PIANO; rosewood case, good condition. Yours for 2/6 weekly.
  - £16—MORNINGTON PIANO; clear, full tone; a real bargain. Yours for 2/6 weekly.
- GRAMOPHONES:  
FINEST SELECTION IN THE DISTRICT  
Call now and hear the new season's models  
TERMS FROM 2/- WEEKLY.

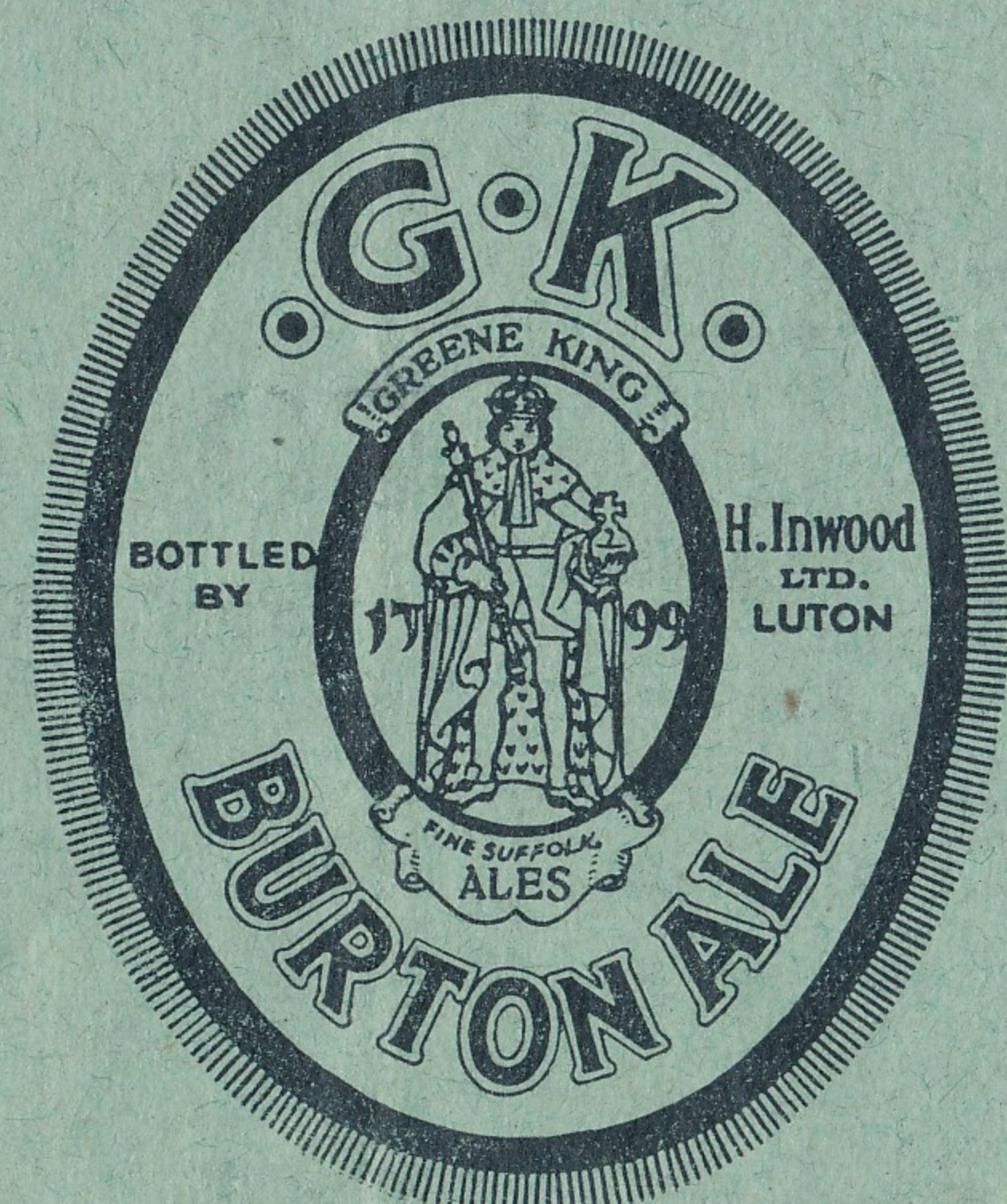
LUTON PIANO CO.  
(Opposite WELLINGTON STREET (Opposite  
Cinema) LUTON Cinema)

## FOR ALL THE BEST FOOTBALL PICTURES

SEE  
TO-MORROW'S  
Pictorial

## CHALLENGE CUP — GOLD MEDAL — CHAMPIONSHIP ALL WON AT THE LAST BREWERS' EXHIBITION BY

Brewed from  
the finest  
East Anglian  
Barley and  
Kentish Hops



Ask for  
it at  
your Club!

The finest  
Ale in the  
District.

The Best Value.

SOLE LOCAL AGENTS  
NEW BEDFORD ROAD 'Phone 241.  
(Light or Dark)  
H. INWOOD, LTD., 42, CHAPEL STREET 'Phone 1425.  
SOLE LOCAL AGENTS  
108, DUNSTABLE ROAD 'Phone 241.



If you want Beers of quality then you MUST have J. W. GREEN'S Noted Luton Ales.

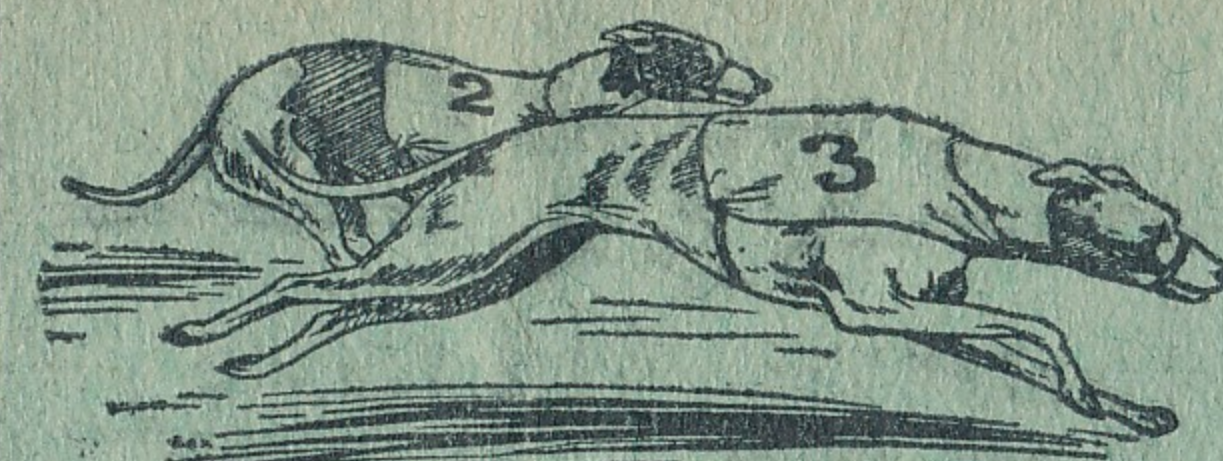
J. W. GREEN, LTD., THE BREWERY, LUTON.  
TELEPHONE: LUTON 1454.

# PALACE

ALL THIS WEEK—  
LUTON'S BIGGEST PICTURE.

## HELL'S ANGELS

*Reg Fisher AND HIS RASCALS OF RHYTHM.*



Proprietors:  
Luton & Dunstable  
Greyhound Racing Club, Ltd.  
Room 4,  
Old G.P.O. Buildings,  
Cheapside, Luton.  
Phone: 366.

## GREYACING

**LUTON - Dunstable Rd. Track**  
**WEDNESDAY AT 7.45 p.m.**  
EVERY WEDNESDAY AND SATURDAY.  
ADMISSION: 1/3. 2/4, incl. Tax & Card. Free Car Park.

# ALMA

KINEMA LUTON

TO-NIGHT.

A Story of Romantic Bagdad.

# KISMET

featuring

OTIS SKINNER

ORCHESTRA :: ORGAN.

*The* **GREATEST SHOW FOR MILES!**

## LUTON TOWN.

COLOUR—WHITE

RIGHT

Imrie<sup>1</sup>

Kingham<sup>2</sup>

Kean<sup>4</sup>

Gale (or Hale)<sup>5</sup>

Hodgson<sup>3</sup>

Fraser<sup>6</sup>

M'Nestry<sup>7</sup>

Yardley<sup>8</sup>

Tait<sup>9</sup>

Rennie<sup>10</sup>

Slicer<sup>11</sup>

Referee—  
Mr. H. E. Gray (Ilford)

Linesmen—  
Mr. H. J. Hancock (Harlesden), red striped flag; Mr. L. G. Charles (Enfield), blue striped flag.

Wells<sup>12</sup>

Dawes<sup>13</sup>

Bowen<sup>14</sup>

Boyle<sup>15</sup>

Davies<sup>17</sup>

Odell<sup>18</sup>

Allon<sup>19</sup>

Anthoney<sup>20</sup>

Inglis<sup>21</sup>

Hammond<sup>22</sup>

LEFT

## NORTHAMPTON.

COLOUR—CLARET.

RIGHT

# EMPIRE

BURY PARK RD

TO-NIGHT—

KAY FRANCIS and CHAS. BICKFORD in

# PASSION FLOWER

FULL SUPPORTING PROGRAMME.

**LUTON'S MOST EXCLUSIVE CINEMA**

INSTAL NOW.  
ANITA B ZIG-ZAG EDGE to EDGE SEWING MACHINES.

ANITA 11

Is the latest Model. The result of many years' experience. Undoubtedly the best machine for both Edge-to-Edge or Lapping.

ASK FOR DEMONSTRATIONS.

JANES BROS., ENGINEERS,  
HIGH TOWN RD., LUTON.

## A. N. BROWN

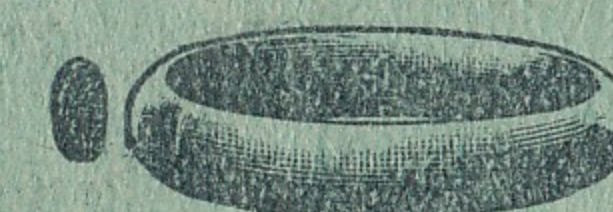
Wireless & Electrical Stores

**36 PARK STREET**  
**LUTON :: PHONE 1809**

---

**BATTERY CHARGING STATION**

THE HOUSE for RINGS



4/6 to £4 10

WEDDING RINGS

9 ct. and 22 ct gold, 15 sizes in 20 prices, including 'Court' Shapes.



£1 10 to £50

DIAMOND RINGS

Beautiful stones securely set in 18 ct. gold and platinum.



3/6 to £4

SIGNET RINGS

9 ct. and 18 ct. gold, in a vast range of the latest designs.

**F. HINDS, Ltd.**  
**5, PARK SQUARE, LUTON.** ESTABLISHED 1856.  
Branches in London and Provinces.



# News from all Quarters

**Mr. Peter McWilliam (Manager of Middlesbrough).**—More science; less of this fetish for speed—that is football's great need.

I admit the difficulty since the last alteration to the off-side rule.

The throw-in change is certainly more equitable. Referees, I hope, will seek more diligently than ever to check rough tendencies, with all that they mean as a deterrent to the finer points of play. May the new season prove far better than is generally feared.

**Mr. Peter Hodge, Manager of Manchester City.**—There has been much comment on the quiet close season from a transfer point of view, but this may prove to be the lull before the storm. By this I mean that the season may turn out a much better one than some people seem to think.

One reason for the quietness has been that besides money being scarce there has not been an abundance of outstanding players available, and in this respect all clubs will be more on a level.

To me it looks like being a season when young players will have a better chance of making good than at any time since the war.

There is a story attached to the signing by Sunderland of William Nichol, the Galashiels inside left. He had been down at Roker Park for over a week, with a view to taking part in a private trial game, and then a public practice last Wednesday, which, however, was postponed owing to wet weather.

In the meantime a First Division Club in the South had sent a scout to Roker to try and spirit Nichol away. Unfortunately for the scout he was recognised and his mission ascertained. Within 24 hours Nichol was a signed professional for Sunderland.

\* \* \* \* \*

Football club's don't go asking for trouble, but some like to get at the little troubles to save themselves from bigger ones.

Take Millwall. They have a staff less, by double figures, than last season. But they have many new players. And these new players have been surprised since their arrival by the sincerity with which they have been 'ordered' to take their troubles to the management.

This way for all men with grievances—big or little—is the message in the passage leading to the office.

## Luton Football Supporters Club

### JOIN TO-DAY

Fill up this Membership Form now and send, together with your Subscription, to the Registrar (Mr. Denis Wright, Cromwell Hill, Luton), or the Hon. Secs., Messrs. Gilder and Hunt, 'News Office, Luton.

I desire to be enrolled as a member of the above Club, and have pleasure in forwarding my subscription for the year ending August 31st, 1932. (The minimum subscription is 1/- annually).

Name.....

Address.....

.....

.....

THE Luton Supporters' Club will concentrate on making new members during the next few weeks, as well as running various schemes, and it was a pleasure to receive from one member of the Council, Mr. A. H. Rance, on Saturday, the subscriptions of 20 new members, all from one establishment. That is how we like to get them. There should be healthy rivalry between the Luton and the Watford Supporters' Clubs, as there is between the teams, but the latter have good start. Last season they got the Shield awarded by the Federation of Supporters' Clubs for highest membership. They had a little over 1,500 members. I am reliably informed that their total at the first practice game was about 600. That should not be nearly enough for us at Luton, and 1,500 will not be half as many as we expect. We hope to make that total before the end of September.

The first donation to the Town Club was made last Saturday, when £25 was handed over to Mr. Wightman.

It is a long way ahead yet, but book Monday, October 19th, for a Dance at the Assembly Hall.

**Charnley**  
and Sons

Qualified  
Ophthalmic Opticians

SIGHT-TESTING  
EYEGLASSES  
SPECTACLES  
- REPAIRS -

15 Wellington Street  
LUTON

**W. F. BING**

*Dyer & Cleaner*

70 Stuart St. - Luton

Dyeing of Suits,  
Costumes and Coats  
a speciality

**5/-**

Suits, Coats and  
Costumes Sponged  
and Pressed

**1/6**

Mourning Orders Dyed in 24 hrs.  
VALET SERVICE



**MASTERPHONE**  
and ELECTRIC Co.  
110 BURY PARK Rd., LUTON



PHILIPS' ALL-ELECTRIC RECEIVERS

**LUTON'S LEADING RADIO ENGINEERS**

Stockists of  
Pye, Lissen,  
Amplion,  
Ultra, Phillips,  
Kolster-Brandes  
Gecophone,  
Ormond,  
Cosser, Ecko,  
and all  
Electric  
Receivers.  
Also latest  
Radio  
Gramophones  
and  
Portables.

Service  
Department.  
Electrical  
Installations.

**EASY  
TERMS**

See our wide  
range of  
Receivers and  
Components  
before  
Purchasing

Ediswan  
Service Station



# PLAZA

(HIGH TOWN)

General Manager - - - W. J. Godleman.

TO-NIGHT—

A Sherlock Holmes All-Talking Thriller.

## THE SLEEPING CARDINAL

From the late Sir Arthur Conan Doyle's Series.

FULL PROGRAMME.

DAILY 2 P.M. TO 11 P.M.

## LUTON GREYHOUND ASSOCIATION

NEW BEDFORD TRACK

(NEAR GOLF LINKS)

Meetings (Summer Time)

Sundays 11 a.m. & 6.30 p.m.

Wednesdays 3 p.m.

GOOD GRADED & OPEN FLAT AND  
HURDLE RACES EVERY MEETING.

WATCH FOR OUR GRAND ALL  
ENGLAND OPEN SWEEPSTAKES TO  
BE RUN ON OUR FIRST ANNIVERSARY

## Entertainments

### PLAZA

SHERLOCK HOLMES.

"THE SLEEPING CARDINAL."

On Wednesday comes one of the late Sir Arthur Conan Doyle's stories, "The Sleeping Cardinal," adapted from "The Final Problem of the Empty House." The story:—"The Sleeping Cardinal"—an innocent looking oil painting, but one which has led many a man to his doom, for behind it in a secret room is the world's greatest organiser of crime—Moriarty!!

The night watchman of the Commercial Bank is murdered—and though the safe is entered, nothing is missing.

Ronald Adair is cheating at bridge—and his sister, Kathleen, asks Dr. Watson to help her to put an end to it. Watson consults Holmes, who interviews Kathleen, and deduces that there is a connecting link between the Bank Murder and Ronald Adair. Forged notes have been substituted in the Bank safe, and Adair, being in the power of Moriarty, is to take the real notes to France. At the last moment he shirks the job—and is killed.

Holmes, who is now hot on the scent tracks down the murderer by following up a clue of a boot-tag which he had noticed on Moriarty's left boot when the latter had visited him in disguise.

### ALMA KINEMA

"Kismet," a story of romantic Bagdad twelve centuries ago, will form the leading screen feature this week. Oscar Asche and Lily Brayton figured in the principal roles in the original stage play twenty years ago, and Otis Skinner, who is the crafty beggar, Hajji, in the talkie version, played the part on the legitimate stage over seventeen hundred times, and also for the silent screen version. There is a long and powerful cast, and it is a superb spectacle. A British production will feature Leslie Fuller, of Margate Pedlars fame, in "What a Night," an uproarious comedy centred round a commercial traveller who stays for the night in a haunted inn.

"An Oriental Fantasy," arranged by Mr. Phasey will figure in the orchestral presentation, together with Ketelby's "In a Persian Market," and a foxtrot "Egyptian-Elle."

## in Luton

### WELLINGTON

"THE BACHELOR FATHER."

Marion Davies stars in her fourth talkie in "The Bachelor Father," that is being shown at the Wellington for the first half of this week. The picture is an adaptation of a stage hit, and the vivacious blonde comedienne finds in it ample scope for her talents, when she takes Sir Basil Winterton as father on probation.

Also being shown on Monday is "Westward Bound," starring Buddy Roosevelt and Buffalo Bill, junr., in a Western talkie. When a man is young and handsome and has always sat lazily in the lap of luxury and then suddenly is sent out west with only his chauffeur as company because his escapades are ruining his father's chances of re-election to the Senate, what does he do?

### EMPIRE

"PASSION FLOWER."

On Monday and the following two days of the week, the programme will be headed by "Passion Flower," a powerful domestic drama with Kay Francis, Charles Bickford, Kay Johnson, Lewis Stone and Zasu Pitts. According to William De Mille, who directed, there are no heroes, no heroines or villains. The story was selected because it is a simple and essentially human narrative of the circumstances by which very normal people get into a marital muddle, and what they were forced to do in order to get themselves straightened out again. There is again an excellent list of supporting features.

### PALACE

"HELL'S ANGEL'S."

This week the management are presenting one of the most lavish and talked of films of the century, "Hell's Angels." This spectacular air thriller was produced at a cost of £800,000, and took three years to complete, with eighteen months alone devoted to aviation and Zeppelin sequences. The largest air fleet ever assembled, except by governments, participated in the picture. The aerial squadron comprising 87 planes, with 137 pilots, including every stunt flyer and ex-war ace in America. The same lavish enterprise was displayed in the operations on land.

## WELLINGTON CINEMA

TO-NIGHT—

Vivacious! Saucy! Thrilling!

## THE BACHELOR FATHER

Featuring MARION DAVIES and RALPH FORBES.

A Riot of Mirth and Romance. Also

Buffalo Bill, Jr. and Allene Ray in

WESTWARD BOUND

## Luton's Wireless Doctor

SETS REPAIRED  
AND RE-MADE  
BY EFFICIENT  
STAFF OF  
QUALIFIED ENGINEERS.

Satisfaction Assured.  
Ask for Quotations.

## WARREN'S

RADIO ASSOCIATION AUTHORISED  
REPAIRER.

121, Dallow Road, LUTON.



# How They Stand in the League

## HOW THEY FINISHED.

### THE LEAGUE. DIVISION III. (South)

	P	W	L	D	F	A	P
Notts. C.....	42	24	7	11	97	46	59
Crystal P.....	42	22	13	7	107	71	51
Brentford ...	42	22	14	6	90	64	50
Brighton .....	42	17	10	15	68	53	49
Southend ....	42	22	15	5	76	60	49
Northampton	42	18	12	12	77	59	48
Luton Town..	42	19	15	8	76	51	46
Q.P.R. ....	42	20	19	3	82	75	43
Fulham .....	42	18	17	7	77	75	43
Bournemouth	42	15	14	13	72	73	43
Torquay .....	42	17	16	9	80	84	43
Swindon .....	42	18	18	6	89	94	42
Exeter .....	42	17	17	8	84	90	42
Coventry .....	42	16	17	9	75	65	41
Bristol R.....	42	16	18	8	75	92	40
Gillingham .	42	14	18	10	61	76	38
Walsall .....	42	14	19	9	78	95	37
Watford .....	42	14	21	7	72	75	35
Clapton O.....	42	14	21	7	63	91	35
Thames .....	42	13	21	8	54	93	34
Newport ....	42	11	25	6	69	111	28
Norwich .....	42	10	24	8	47	76	28

### LONDON COMBINATION.

	P	W	L	D	F	A	P
Arsenal .....	42	28	8	6	120	48	62
Chelsea .....	42	26	9	7	101	48	59
West Ham ...	42	26	11	5	130	69	57
Tottenham ...	42	25	10	7	107	58	57
Fulham .....	42	21	13	8	93	65	50
Brentford ....	42	21	13	8	98	84	50
Millwall .....	42	18	14	10	76	70	46
Leicester C....	42	21	18	3	102	84	45
Southampton.	42	17	15	10	100	94	44
Crystal P. ...	42	20	19	3	78	75	43
Luton Town.	42	17	17	8	77	78	42
Southend ....	42	18	20	4	94	105	40
Cardiff C. ...	42	17	19	6	80	88	40
Brighton & H.	42	17	21	4	80	98	38
Swansea T....	42	17	23	2	72	96	36
Q.P.R. ....	42	15	21	6	84	105	36
Coventry C....	42	15	23	4	81	97	34
Watford .....	42	13	21	8	75	95	34
Reading .....	42	13	22	7	84	126	33
Portsmouth..	42	10	23	9	75	116	29
Charlton .....	42	13	27	2	76	111	28
Clapton O.....	42	8	29	6	62	135	21

## CENTRAL RESTAURANT

20, 22, 24, Cheapside,  
LUTON.

PHONE 172.

Luton's oldest, but  
still the best.

We can seat 200.

Quick Service, Best  
Quality and Reason-  
able Prices.

Support Local Traders.

PROPRIETOR: S. G. PRIMETT

## F. J. COOPER

*Automobile  
Engineer*

### REPAIRS and OVERHAULS SPARE PARTS

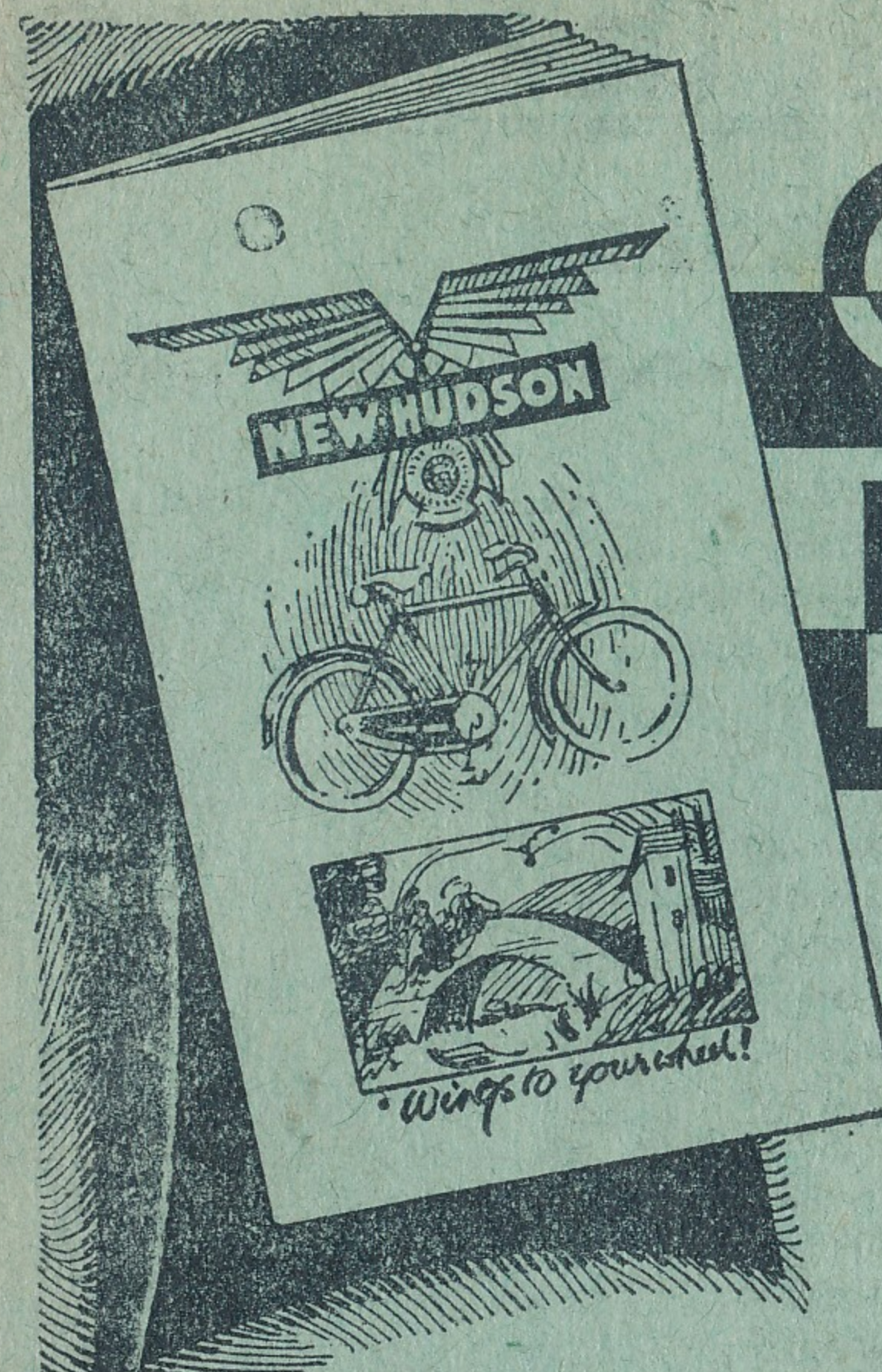
of Every Description  
IN STOCK

### 14 & 20 SEATER CARS FOR HIRE

ACCUMULATORS CHARGED  
BY EFFICIENT METHODS

251 High Town Road  
LUTON—Phone 731

# Get This Free Book



## 22 Superb Bicycle Models To Choose From

You can't be satisfied with  
any other Bicycle after  
looking through this latest  
Catalogue of



### BICYCLES

Models for sport, business,  
touring. For the youngsters  
too—special New-Hudson  
Juvenile Cycles.

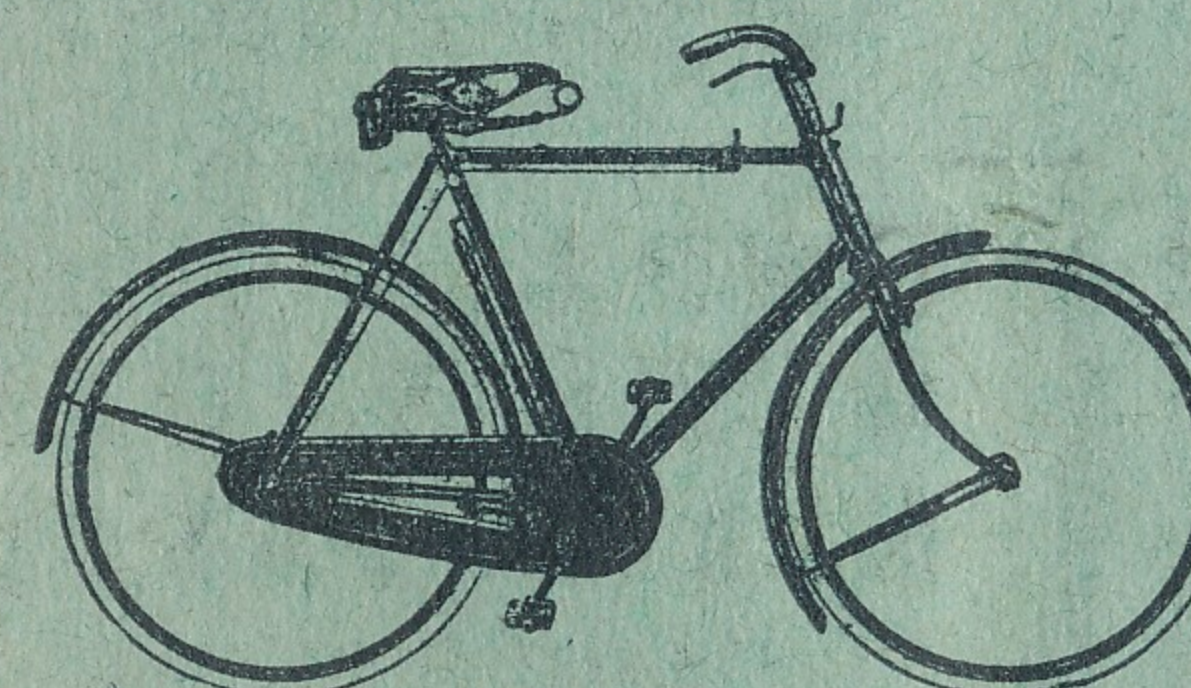
Call and ask for your Copy—  
ask for particulars of easy  
pay-as-you-ride terms and  
see the complete range.

Prices from £4-19-6 or  
10/- down.

H. G. Partridge & Co.  
LUTON



Lady's All-Weather Model.  
PRICE..... £6 - 15 - 0



Gent's All-Weather Model.  
PRICE..... £6 - 12 - 6

LUTON'S LEADING CYCLE DEALERS

*H. G. Partridge & Co*  
PHONE 234 10-12 CHAPEL ST.  
LUTON NEW HUDSON DEPOT



ALL REGULAR  
GOODS REDUCED  
3/- IN THE £

**SALE**  
**—NOW—**  
**PROCEEDING**

**SEE WINDOWS  
FOR BARGAINS**

**Laceys**  
*"The House that Value Built."*

**14 WELLINGTON STREET 14**