



TRUE - FORM



FOOTWEAR

The Best Value
IN THE TOWN

=====

BUY FROM THE ACTUAL MAKERS

LOCAL BRANCH:

44, GEORGE STREET.

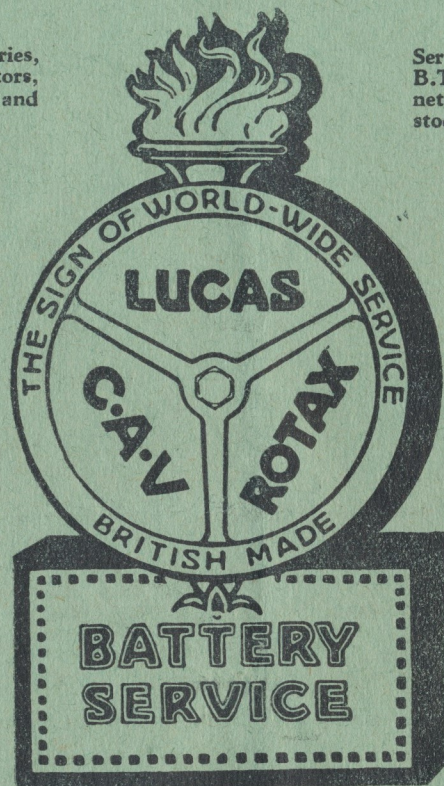
Head Office and Factories, NORTHAMPTON.

DAILY DELIVERY SERVICE

IN YOUR DISTRICT BY SPECIALISTS

In all repairs to Automobile Electrical equipment,
Dynamos, Starters, Magnets, Coils, and Car Wiring.

Large Stocks of Batteries,
Magnets, Dynamotors,
Coil Ignition, New and
Service Units.



Service agents for the
B.T.H. and Marelli Mag-
netos. Comprehensive
stocks always carried.

MOTORISTS ! !—If your New Car is fitted with either of these Batteries, you will receive, when taking delivery, a **SERVICE VOUCHER**. Hand this voucher to us, and you are then entitled for a period of 90 days, to have your Battery examined and **SERVICED FREE**.

WIRELESS ACCUMULATORS ! !—Large Stocks of **GLASS—CELLULOID — JELLY ACID — HIGH TENSION**. The new C.A.V. H.T. Accumulator represents the culmination of endless experiments of chemists and designers, and is the product of the most modern plant in the world. Built in one piece moulded containers, made like a car battery.

Borough Engineering Works,

LTD.

THE AUTOMOBILE ELECTRICAL SERVICE STATION
28, ASHTON ROAD - - - LUTON

PHONE 1914-15

Luton Town Football & Athletic Club Ltd

President:
Harry Arnold, Esq., C.A., J.P.

Directors:
Messrs. E. G. Gibbs (Chairman), E. Mounse (Vice-Chairman),
Willet Ball, P. A. Edwards, S. H. Godfrey, H. R. Hansell,
O. Jeyes.

Secretary-Manager: Mr. George Kay.

The League—Div. III.

LUTON v. COVENTRY.

Sat., March 14th.

We have been able to jog along fairly happily recently without making many changes, but this week we have a couple to record. Yardley was so severely knocked on the knee at Fulham that he has to stand down, and so Bill Brown gets a further opportunity with the first eleven. Bryce returns again, but this time to outside left, his original position.

Coventry are making forward changes also, otherwise the team is the same as drew at home with Southend United. Lake, who has been a live wire at inside left, will lead the forwards, this being his first run in that position. Ball, the former Bury and West Ham player, will be at inside left.

We enjoy our duels with Coventry City, and give them a very hearty welcome. They will go above us if they win this afternoon, but we want to keep our place and go a little higher, and expect to do so. We trust the only regrets the City will have when they go home will be that they were not able to take a point with them.

Our Reserves are at Cardiff this afternoon, and the latest recruit to the professional ranks, Percy Smart, is playing. He has done very well with the Reserves, and we wish him a long and successful term at Luton.

Next Saturday's Cup Tie.

We hope our supporters will come next Saturday to see the A.F.A. Cup Semi-Final on our ground. It is a nice little compliment that we should have the opportunity, and we trust our followers will appreciate it. The teams concerned are St. Albans City and Derbyshire Amateurs. Most of the latter, if not all, are Derby Players, and have made a good show in amateur football.

CONTENTS.

Page	
3	Comments.
4/5	Fixtures and Results.
6	Portrait Gallery.
6	Query Corner.
7	Half-time Scores.
8/9	Teams and Officials.
10/11	News from all Quarters.
12/13	Entertainments.
14	League Tables.

Luton Town F.C. 1st.X1 Fixtures

The League Div. III (Southern)

Date.	Opponents.	Ground.	F.	A.	Date.	Opponents.	Ground.	F.	A.
Aug. 30	Brentford	H.	1	1	Dec. 26	Torquay	A.	1	1
Sept. 3	Exeter C.	A.	1	1	" 27	Brentford	A.	1	0
" 6	Crystal P.	A.	1	5	1931.				
" 8	Brighton	H.	2	2	Jan. 3	Crystal P.	H.	1	2
" 13	Southend	H.	2	1	" 10	Norwich C.	H.	1	0
" 17	Brighton	A.	0	2	" 17	Southend	A.	2	0
" 20	Watford	A.	0	1	" 24	Cam. University (F)	H.	5	2
" 27	Bristol R.	A.	1	5	" 28	Watford	H.	4	1
" 29	Exeter C.	H.	3	1	" 31	Bristol R.	H.	4	1
Oct. 4	Newport C.	H.	3	1	Feb. 7	Newport C.	A.	1	3
" 11	Gillingham	A.	0	4	" 14	Gillingham	H.	4	1
" 18	Bournemouth	H.	2	3	" 21	Bournemouth	A.	0	0
" 25	Swindon T.	A.	0	0	" 28	Swindon T.	H.	4	0
Nov. 1	Fulham	H.	5	0	Mar. 7	Fulham	A.	1	2
" 8	Coventry C.	A.	2	1	" 14	Coventry C.	H.		
" 15	Walsall	H.	0	0	" 23	Clapton O.	H.		
" 22	Queen's Park R.	A.	1	3	" 21	Walsall	A.		
" 29	Clapton O. (F.A. Cup)	H	2	2	" 28	Q. P. R.	H.		
Dec. 4	Clapton O. (Replay)	A.	4	2	April 3				
" 6	Thames	A.	0	1	" 4	Norwich C.	A.		
" 13	Watford (F.A. Cup)	A.	1	3	" 6	Northampton	H.		
" 15	Clapton O. (aban.)	H.	3	4	" 7	Northampton	A.		
" 20	Notts C.	A.	0	1	" 11	Thames	H.		
" 25	Torquay	H.	3	1	" 18	Clapton O.	A.		
					" 25	Notts. C.	H.		

A MAXIM FOR FOOTBALL
(and other things):
"He who hesitates is lost."
Don't hesitate to try

FLITTON'S

PRIZE WINNING
BEERS

C. H. TAYLER,
THE STAR INN, CHALTON,
Near Luton.
Delivers frequently in Luton and District.

MARES

THE STORE

for

MEN'S WEAR

Distinctive Styles.
Moderate Prices.

—o—o—o—o—

65-67, George St., and
187, Dunstable Rd., Luton

CHARLES MARES. LTD.

Luton Town F.C. 2nd.X1 Fixtures

London Combination.

Date.	Opponents.	Ground.	F.	A.	Date.	Opponents.	Ground.	F.	A.
1930.					1931.				
Sept. 1	Reading	H.	4	1	Jan. 3	Brentford	A.	1	5
" 6	Brentford	H.	2	2	" 10	Reading	A.	4	3
" 13	Millwall	A.	1	2	" 14	Southend	H.	1	0
" 15	Crystal P.	H.	2	2	" 17	Millwall	H.	0	1
" 20	Watford	H.	6	1	" 29	Swansea T.	A.	4	2
" 25	Chelsea	A.	1	3	Feb. 7	West Ham	H.	0	0
" 27	Southend U.	A.	0	2	" 14	Southampton	A.	1	3
Oct. 4	West Ham	A.	0	5	" 21	Clapton O.	H.	2	0
" 11	Southampton	H.	2	1	" 28	Portsmouth	A.	3	2
" 18	Clapton O.	A.	1	1	Mar. 7	Arsenal	H.	2	2
" 25	Portsmouth	H.	7	1	" 11	Watford	A.		
Nov. 1	Arsenal	A.	1	3	" 14	Cardiff C.	A.		
" 8	Cardiff C.	H.	3	1	" 21	Q.P.R.	H.		
" 15	Q. P. R.	A.	0	2	April 3	Brighton	H.		
" 22	Swansea T.	H.	4	1	" 4	Coventry C.	H.		
" 29	Coventry C.	A.	1	1	" 6	Brighton	A.		
Dec. 6	Leicester C.	H.	3	0	" 7	Crystal P.	A.		
" 13	Fulham	H.	0	1	" 11	Leicester C.	A.		
" 20	Charlton A.	H.	4	1	" 18	Fulham	A.		
" 26	Tottenham	H.	0	4	" 20	Chelsea	H.		
" 27	Chelsea (Abnd.)	H.	0	0	" 25	Charlton A.	A.		
					May 2	Tottenham	A.		



UP-TO-DATE SALOON COACHES
— FOR PRIVATE HIRE —

Coaches Steam Heated and Rugs Supplied.

Regular Service 12 times daily

LUTON and LONDON

Booking Office: 25, Park Street West, Luton.

Our Portrait Gallery

WM. BROWN



Who owing to the injury of Jimmy Yardley once more gets a chance as leader of the attack.

Our Query Corner

JIM (Dunstable).—You are right. The Town's first win last season was at Watford. The first ten results were :—

Exeter	...	A	2-2
Norwich	...	H	1-1
Southend	...	H	0-3
Watford	...	A	4-0
Gillingham	...	H	2-0
Bournemouth	...	A	1-5
Walsall	...	H	2-3
Q.P.R.	...	A	0-1
Fulham	...	H	4-1
Newport	...	H	4-2

SUPPORTER (Luton).—Thirlaway is with Tunbridge Wells Rangers.

W.H. (Luton).—The League has nothing to do with the allocation of Cup Final tickets. The F.A. manage the whole thing. We can apply for tickets, but have to be content with what we are allowed.

Questions should reach us not later than Thursday morning and should be addressed : "Football Query," News Office, Luton.

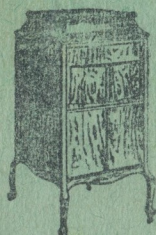
Today's Half-time Scores

The half-time scores are given in two lists. Copy the first list and then watch the Board for the second list, which will be given immediately.

CLUBS	Scores.	CLUBS	Scores.
First named is home team.		First named is home team.	
FIRST LIST.		SECOND LIST.	
F.A. CUP.			
A Birmingham v. Sunderland		A Notts Forest v. Port Vale	
B West Bromwich v. Everton		B Preston v. Charlton	
LEAGUE.		C Reading v. Cardiff	
C Aston Villa v. Arsenal		D Southampton v. Bristol City	
D Bolton v. Sheffield Utd.		E Stoke v. Plymouth	
E Chelsea v. Blackburn		F Brighton v. Notts Co.	
F Huddersfield v. Portsmouth		G Bristol R. v. Fulham	
G Liverpool v. Derby County		H Exeter v. Watford	
H Middlesbrough v. Manchester C.		K Gillingham v. Bournemouth	
K Newcastle v. Blackpool		L Northampton v. Thames	
L Sheffield Wed. v. Leeds Utd.		M Southend v. Walsall	
M Bradford v. Bury		N Cardiff Res. v. Luton Res.	
N Burnley v. Barnsley			

NOTE.—The letter in the Programme corresponds with the letter on the Board—thus A 0-1 means that the first-named Club has scored 0 and their opponents 1.

Gramophones



of TONE and
DISTINCTION

TERMS FROM
2/-
WEEKLY.

The following are a few of our big offers.

Cash	NO DEPOSIT	Weekly Terms
£3/3/-	Table Model	2/-
£5/5/-	Pedestal Model	2/6
£6/6/-	Console Model	2/6
£8/8/-	Console Model	3/-

Call and hear our large range of new season's models NOW.

LUTON PIANO CO.

(Opposite WELLINGTON STREET (Opposite Cinema) LUTON (Opposite Cinema)

LOWEST MARKET PRICES

Brown Paper, M.G.
Kraft, Special White
Counter and Shelf
Paper.

PAPER & STRING
Pack-
ing Tissue,
Coloured Tissue,
Millinery Bags, Sisal
Cord & Carton Twine.

J. A. BURGESS

Phone : & SONS. 75

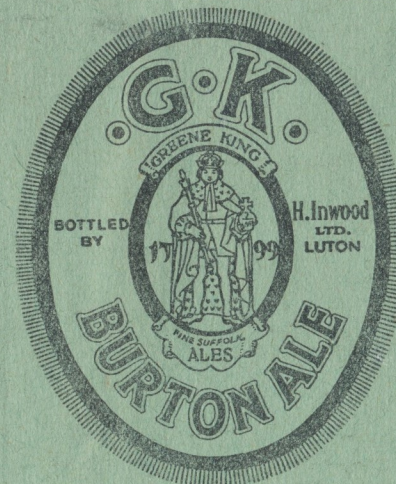
ALL KEPT IN STOCK.

26-28, BUTE STREET, and

42-44 HASTINGS ST., LUTON.

SILVER MEDAL—CHAMPIONSHIP GOLD MEDAL—BRONZE MEDAL ALL WON AT THE LAST BREWERS' EXHIBITION BY

Brewed from
the finest
East Anglian
Barley and
Kentish Hops



Ask for
it at
your Club!
—
The finest
Ale in the
District.

SOLE LOCAL AGENTS **H. INWOOD, LTD.,** SOLE LOCAL AGENTS
NEW BEDFORD ROAD 42, CHAPEL STREET 108, DUNSTABLE ROAD
'Phone 241. 'Phone 1425. 'Phone 241.

If you want Beers of
quality then you **MUST**
have J. W. GREEN'S
Noted Luton Ales.

J. W. GREEN, LTD., THE BREWERY, LUTON.

TELEPHONE: LUTON 1454.

PALACE

For the Best Programme in the Provinces.

TO-NIGHT.

Banish the Blues—Revel in the

CUCKOOS

VARIETY and ORCHESTRA.

Charnley
and Sons

Qualified Ophthalmic Opticians

SIGHT-TESTING — SPECTACLES
EYEGLASSES — — REPAIRS

15, WELLINGTON STREET,
LUTON.

ALMA KINEMA LUTON

TO-NIGHT.

OUTSTANDING SUCCESS!

ALL-TALKING!

ANN HARDING in

HOLIDAY

with MARY ASTOR, ROBERT AMES,
HEDDA HOPPER and EDWARD
EVERETT HORTON.

— ALSO —

TALKING COMEDIES, NOVELTIES,
CARTOONS.

**THE GREATEST SHOW
FOR MILES!**

RIGHT

LUTON TOWN

COLOUR—WHITE

1 Harford

2 Kingham

3 Hodgson

4 Clark

5 McGinnigle

6 Fraser

7 Heslop

8 M'Nestry

10 Rennie

11 Bryce

Referee—

Mr. W. J. Lewington (Croydon)



Linesmen—

Mr. S. E. Short, Portsmouth
(red cross flag); Mr. W. B.
Rainey, Chatham (blue cross
flag).

12 Bowden

13 Ball

14 Lake

15 Alsop

16 Richards

17 Bell

18 Baker

19 Stokes

20 Tilford

21 Crown

22 Allen

LEFT

COVENTRY CITY

COLOURS—BLUE & WHITE

RIGHT

ELLIMAN'S

Embrocation

INVIGORATES THE MUSCLES.



INVALUABLE FOR LUMBAGO, STIFFNESS,
SCIATICA, MUSCULAR RHEUMATISM, SPRAINS,
BRUISES, CHEST COLDS, SORE THROAT FROM
COLD.

At all Chemists, 1/3, 2/- & 4/-

Free booklets on "Training," by T.
Whittaker (the Arsenal Trainer), and on
"Massage" may be had on application.

ELLIMAN, SONS & Co., Ltd., SLOUGH

INSTAL NOW.

ANITA B ZIG-ZAG EDGE to EDGE
SEWING MACHINES.

ANITA 11

Is the latest Model. The result of many years'
experience. Undoubtedly the best machine for both
Edge-to-Edge or Lapping.

ASK FOR DEMONSTRATIONS.

JANES BROS., ENGINEERS,
HIGH TOWN RD., LUTON.

BUY YOUR WIRELESS SETS

FOR CASH OR EASY TERMS

COMPONENTS



FROM

VALVES, Etc.

A. N. BROWN,

Accumulators Charged.

Exide and Oldham Stockist.

36, Park Street, LUTON.

WIRELESS
STORES,

PHONE 1809

THE HOUSE for RINGS



4/6 to £4 10

WEDDING RINGS

9 ct. and 22 ct.
gold, 15 sizes in
20 prices, includ-
ing 'Court' Shapes.

£1 10 to £50

DIAMOND RINGS

Beautiful stones
securely set in 18
ct. gold and
platinum.

3/6 to £4

SIGNET RINGS—
9 ct. and 18 ct.
gold, in a vast
range of the
latest designs.

F. HINDS, Ltd.

5, PARK SQUARE, LUTON.

Branches in London and Provinces.

The London
Jewellers,

ESTABLISHED
1856.

News from all Quarters

Littlewood, the Oldham Athletic centre-forward, and former Luton player, has been transferred back to Port Vale at what is stated to be a substantial fee.

Littlewood, who is 24 years of age, joined Oldham from Port Vale in January, 1929, when he was secured by the Athletic in exchange for Pynegar and a fee. He was then in his third season.

Since his move to Boundary Park, Littlewood has appeared in 78 League games and scored two goals in Cup matches.

He gave Oldham considerable assistance last season, when he appeared in 38 matches and scored 22 goals.

* * *

Surprising news regarding the relations of two famous football clubs—Arsenal and Clapton Orient—leaked out during the week-end.

The "Sporting Chronicle" understands that arrangements are being made for considerable financial assistance by the League leaders to the Orient, who have been passing through a period of financial stress.

Mr. Herbert Chapman, the Arsenal's manager, denies, however, that the Arsenal have "taken over" the Orient's affairs, but Mr. Percy Boyden, chairman of the board of directors of the Clapton Orient club, has issued the following statement:—

"Through the help of the nominees of the Arsenal Football Club and Clapton Stadium, arrangements have been practically completed to ensure the continuation of the Clapton Orient club.

"Whatever the final arrangements may be, the club will still run under the title of the Clapton Orient Football Club."

Mr. F. W. Snewin, a director of Clapton, states: "No definite arrangement has yet been made, but the Arsenal are going to help us. There is no suggestion that they are going to 'buy us up,' but they are going to give us assistance, and we certainly need it, otherwise we should have to go under.

"The present Clapton directorate will remain and the Arsenal will have a sort of watching brief in the affairs of the club. It is probable that they will use us as a 'nursery' for players."

News from all Quarters

CHAIRMAN'S STATEMENT.

"Recently our 'gates' have been heart-breaking small. On Saturday there were only 3,200 spectators. The takings were £160—a ridiculous sum for a League match."

Sir Samuel Hill-Wood, chairman of the Arsenal, said: "I have seen the report in which it is stated that the Arsenal proposes to take over Clapton Orient lock, stock, and barrel, including all liabilities.

"That is not true. What we propose to do is to assist the old club to see if we can get it going again on a permanent basis.

"Negotiations have been proceeding for some time in this direction, and our whole aim and object is to avoid anything like absorption and rather try to preserve a fine old sporting club.

"I am not in a position to state definitely how far the negotiations have proceeded, but we are all hopeful that the measure of assistance the Arsenal has offered will be accepted and the old club placed on its legs again. A statement of the position will be made at an early date."

Mr. J. McKenna, President of the Football League, when interviewed on the subject, said: "We are in the dark at the moment, but any club that assists any other club is doing a good work, and we hope this principle will spread.

"The earliest rule of the Football League was that clubs should assist each other."

An application is to be made by the nominees of the Arsenal Football Club for permission to appoint a Receiver to attend to the affairs of the Clapton Orient Football Club, which, it was announced on Saturday, the Highbury club have taken over with a view to re-establishing it on a sound basis.

Subject to both parties agreeing, and to the consent of the Judge hearing the application, the affairs of the Orient club will be conducted by the Receiver until a debenture share, which the Arsenal's nominees hold, has been redeemed.

The Fox Hotel

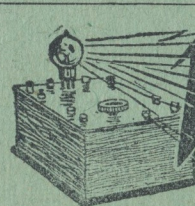
J.W. GREEN'S
FINE
ALES
AND
STOUTS



Fred Martin
WILL BE PLEASED
TO MEET
OLD & NEW
FRIENDS

PHONE 822

DUNSTABLE RD LUTON - CLOSE TO FOOTBALL GROUND



Wireless

MASTERPHONE
and ELECTRIC Co.
110 BURY PARK Rd., LUTON

Stockists of
Pye, Lissen,
Amplion,
Ultra, Phillips,
Kolster-Brandes
Gecophone,
Ormond,
Cosser, Ecko,
and all
Electric
Receivers.
Also latest
Radio
Gramophones
and
Portables.



Service
Department.
Electrical
Installations.

EASY TERMS

See our wide
range of
Receivers and
Components
before
Purchasing.

Ediswan
Service Station

PHILIPS' ALL-ELECTRIC RECEIVERS

LUTON'S LEADING RADIO ENGINEERS

TO-NIGHT



LUTON'S EXCLUSIVE KINEMA

Telephone : Luton 1440.

CONTINUOUS SHOWING FROM 2.30.

SPECIAL PRICES

each day till 4 p.m. All seats half-price.

ALL-TALKING DRAMA !

SISTERS

with SALLY O'NEIL, MOLLY O'DAY,
and RUSSELL GLEASON.

GREAT SUPPORTING PROGRAMME.

ALL NEXT WEEK—

GRETA GARBO in "ROMANCE."



TWO BIG TALKIES !

H. B. WARNER in

TIGER LOVE

EDWARD E. HORTON in

THE SAP

Entertainments in Luton

EMPIRE.

"ROMANCE"

A big film is coming to the Empire for the whole of next week, when Greta Garbo's "Romance" will be shown for a pre-release run. The star is in her most alluring and appealing moods in a flawless portrayal of the opera singer in Edmund Sheldon's celebrated stage success. In keeping with the period, Miss Garbo is seen in picturesque old-fashioned costumes—crinolines and hoop skirts. She is well seconded by two remarkably clever artistes in Lewis Stone and Gavin Gordon.

Of Greta Garbo, one critic wrote: "If there were doubting diehards left among her admirers after they had seen "Anna Christie," there will be none when they have seen "Romance."

WELLINGTON.

"THE GREAT GAME."

Here is something truly British—a soccer "talkie," which presents the great winter pastime as its myriad followers understand it. "The Great Game," to be shown at the Wellington for the whole of next week, is the first British soccer talkie to be made. It shows thrilling football matches, including a Wembley final, and also takes the spectator "behind the scenes" in the dressing rooms and at directors' meetings. It is not only to football enthusiasts, however, that the film will appeal, for the young centre-forward is in love with the team manager's daughter. The question as to whether the teams are over-burdened with conflicting directorial advice before they go on to the field, is raised, and the working behind big football transfers is revealed.

There are to be matinees on Monday, Wednesday, and Saturday.

HIGH TOWN.

"TIGER ROSE"

One of the most thrilling episodes of "Tiger Rose," the all-talking picture at High Town to-night, is a race through the rapids. This thrilling feat is performed by Grant Withers and Lupe Velez in an attempt to escape from pursuing North West Mounted Police, led by Monte Blue. The denouement of the story is highly unusual. The rapids scenes, representing the Hudson Bay country, were actually taken in California. Every precaution was taken to safeguard the lives of the actors by studio officials and state authorities, as there was, of course, the chance of the canoe overturning. "Tiger Rose" is taken from Willard Mack's New York stage play of a woman's fight for her lover's life.

WELLINGTON CINEMA

ALL NEXT WEEK—

THE FIRST BRITISH SOCCER TALKIE

THE GREAT GAME

with John Batten, Rene Clama, Jack Cock,
and 22 well-known Professional Football
Stars.

* * * *

MATINEES—MON., WED., & SAT.

Luton's Wireless Doctor

SETS REPAIRED
AND RE-MADE
BY EFFICIENT
STAFF OF
QUALIFIED ENGINEERS.

Satisfaction Assured.
Ask for Quotations.

WARREN'S

RADIO ASSOCIATION AUTHORISED
REPAIRER,

121, Dallow Road, LUTON.

ALMA KINEMA.

NEXT WEEK'S DOUBLE FEATURE

Two all-talkie features figure in next week's programme. Gary Cooper, the popular old Dunstablian, makes a welcome reappearance as the Llano Kid in "The Texan," a terror to men and a torment to women. It is a gripping tale of a villain who turns hero in an amazing series of hard-riding, quick-shooting adventures. Another popular star, lovable Charles Rogers, of "Wings" fame, is said to be more enthralling than ever in "Young Eagles," in which a woman matches wits against a dare-devil air-fighter and wins love. Jean Arthur is his leading lady.

On the stage will be Parr and Parr, eccentric dancers, direct from Continental successes, and Mr. Phasey and the Symphony Orchestra, to commemorate the week in which St. Patrick's Day falls, are presenting an Irish programme, consisting of selection, "The Shamrock," Myddleton; "Danny Boy," Londonderry air; and rhythmic paraphrase, "Echoes of Ireland," Lance.

PALACE THEATRE.

"RENEGADES"

"Renegades," Warner Baxter's latest feature picture for Fox Movietone, which comes to the Theatre next week, is said to give a vivid portrayal of life in that famous organisation, the French Foreign Legion, refuge of the world's most picturesque adventurers. Victor Fleming directed and Myrna Loy and Noah Beery head the supporting cast.

Charles Rogers appears in a talking sketch, and there is a Walt Disney Cartoon in addition to the customary interest pictures.

On the stage there will be Georges Durant, the live wire, assisted by Nancy Massey, and Reg Fisher and his Rascals of Rhythm, in "something different." What it is, is a jealously-guarded secret, but this much is known, that there will be singing and dancing, and the introduction of one or two outside artistes.

How They Stand in the League

Division III (South).

	P	W	L	D	F	A	P
Notts County	32	20	5	7	82	38	47
Northampton	32	15	9	8	61	40	38
Brighton	31	13	7	11	50	37	37
Brentford	32	15	11	6	71	54	36
Southend	31	16	11	4	60	49	36
Fulham	32	15	11	6	59	55	36
Palace	31	15	11	5	79	58	35
Swindon	32	16	13	3	67	65	35
Torquay	33	14	12	7	58	66	35
Bournemouth	32	12	10	10	61	59	34
LUTON TOWN	32	13	12	7	51	45	33
Coventry	31	13	13	5	60	48	31
Q. P. R.	32	14	15	3	65	68	31
Exeter	31	11	12	8	56	67	30
Gillingham	32	10	13	9	47	57	29
Watford	32	11	15	6	56	60	28
Bristol Rovers	33	10	15	8	58	79	28
Walsall	32	10	15	7	65	76	27
Orient	29	11	13	5	44	54	27
Thames	32	10	17	5	44	76	25
Norwich	32	7	18	7	38	61	21
Newport	32	8	21	3	58	94	19

London Combination.

	P	W	L	D	F	A	P
Arsenal	32	21	7	4	95	41	46
Chelsea	30	19	6	5	75	31	43
West Ham	32	20	9	3	94	57	43
Tottenham	33	18	10	5	77	49	41
Millwall	33	16	8	9	64	56	41
Brentford	33	17	11	5	82	70	39
Leicester	32	18	12	2	86	62	38
Fulham	32	17	12	3	69	50	37
Palace	32	16	14	2	66	60	34
Southend	31	15	13	3	74	69	33
Southampton	31	12	12	7	78	62	31
LUTON	31	12	12	7	60	56	31
Brighton	31	13	14	4	62	73	30
Swansea	31	13	16	2	54	65	28
Cardiff	33	12	17	4	62	78	28
Watford	31	11	15	5	59	65	27
Coventry	32	12	17	3	63	72	27
Reading	34	10	18	6	65	102	26
Portsmouth	31	7	17	7	60	89	21
Q.P. Rangers	32	9	20	3	58	95	21
Charlton	31	9	20	2	58	87	20
Orient	33	7	22	4	60	105	18

FIRST and FULL REPORT of the LUTON v. COVENTRY MATCH

FULL TIME LEAGUE SCORES

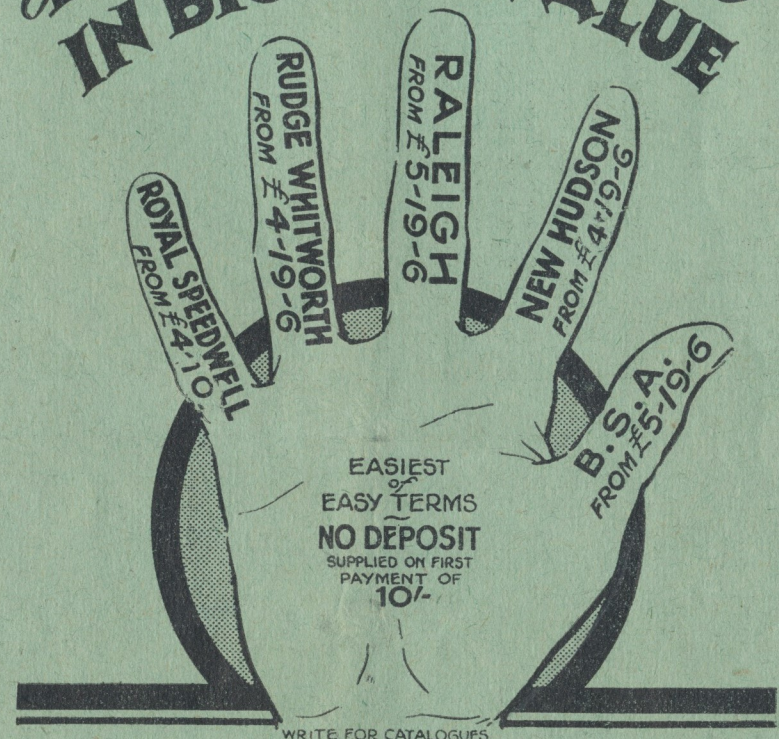
TO-DAY'S RACING RESULTS

All appear in

SATURDAY TELEGRAPH

TO-NIGHT at 6.15 p.m.

The NAP HAND IN BICYCLE VALUE



WRITE FOR CATALOGUES

DIAMOND £3-10-0 & £3-18-6

SOLE AGENTS FOR NEW HUDSON
AND RALEIGH MOTOR CYCLES.

A.G. Partridge & Co
10-12 CHAPEL ST.
LUTON
PHONE 234
NEW HUDSON DEPOT

LUTON'S LEADING CYCLE DEALERS

The Man's Tailor!

PRICES WITHIN REACH OF ALL

STYLES AND MATERIALS TO SUIT ALL TASTES.

We have the Largest Selection of Overcoatings and Suitings in Luton. MADE TO YOUR EXACT MEASUREMENTS AND STYLE OR READY FOR IMMEDIATE WEAR. All sizes and fittings stocked.

Our **37/6** Overcoat, which is ready to slip on, has no equal for value. It is modelled in a fine quality MELTON and is cut on exactly the same lines as those which are to be seen in the West End of London.

Make a Point of Inspecting these Coats—the value will astonish you.

Sole Makers of the

"3 GREAT COATS"

BEDFORD OVERCOAT 50/-

IDEAL OVERCOAT - 60/-

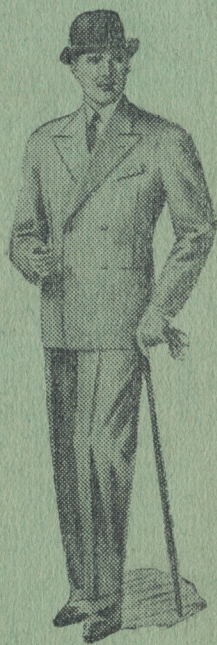
OVERCOAT DE LUXE 70/-

50/- SUITS TO MEASURE

A fine selection of materials in the Season's Latest Designs at this price await your inspection.

Suits at other prices to meet all requirements.

Sole Makers of "JUTLAND SERGE" Suits. The material is woven from the Finest Indigo dyed Botany Wool that neither Shrinks nor Fades. WE GUARANTEE EVERY SUIT SOLD OF THIS SERGE to the extent that in the event of dissatisfaction we will either REPLACE or REFUND MONEY IN FULL.



We cordially invite you to pay us a visit to inspect and examine our tailoring. Such a visit, we are sure, will be to your advantage.

JOHN BRIGHT (Outfitters) Ltd

"The Bell,"

George Street, Luton.

BRANCHES THROUGHOUT THE UNITED KINGDOM.

— The Tailor that suits you best —