

COVENTRY CITY

FOOTBALL
CLUB LTD.

CLUB & GROUND HIGHFIELD RD.



MITCHELLS

*"Good
Honest
Beer"*

AND



BUTLERS

The Midland Daily Telegraph.

WILL GIVE YOU

The Earliest Results OF ALL THE Important League Matches

THE FOOTBALL FINAL EDITION,
CONTAINS MANY SPECIAL SPORTS
ARTICLES AND LOCAL NOTES

ASK FOR Licensed Trade Minerals NEXT TIME !

LEMONADE
STONE BEER
DRY GINGER
VINTO
CHERRY CIDER

SUPPLIERS OF WINES,
SPIRITS, LIQUERS, Etc.
FOR
BANQUETS, DANCES,
WEDDINGS and SOCIAL
FUNCTIONS

BOTTLERS OF
BASS
GUINNESS
WORTHINGTON

The LICENSED TRADE Ltd.,
Albert Street, Coventry

PHONE 2447



President: HIS WORSHIP THE MAYOR, ALDERMAN FRED LEE, J.P.

Vice-Presidents: ALD. F. SNAPE, J.P., COUNCILLOR F. W. KIMBERLEY,
and W. W. SPICER, Esq.

Directors: COUNCILLOR W. W. BRANDISH, (*Chairman*), COUNCILLOR
F. W. KIMBERLEY (*Vice-Chairman*), MESSRS. H. OLLIVER, W. G. SLADE,
F. STRINGER and W. YOUNG.

Medical Officer: DR. A. ST. LAWRENCE-BURKE.

Secretary-Manager: MR. J. A. MCINTYRE.

Telegrams: CITY FOOTBALL COVENTRY.

Telephone: 3461.

Vol. XI. No. 12. NOVEMBER 8, 1930. TWOPENCE

A Weekly Causerie.

By far the most interesting news of the week-end was the excellent display of the Combination eleven against Tottenham Hotspur at Highfield Road. It has been pleasing

From the Boardroom. to hear the comments of the crowd, and softened to some extent the hard things

said about the seniors, who, although playing well, were hardly good enough for Southend, while there was an element of luck about their two goals. In view of adding strength to our playing resources, Mr. McIntyre has been in search of new blood, with the result that he has signed on professional forms, Frederick Simpson centre-half, of Marsden Colliery who are members of the Wearside League. Simpson who is 21 years of age, stands 5 ft. 11 ins., and weighs 12½ stone. The Northern press seem rather annoyed that this player should have left the district. Edward Taylor, an inside forward, accompanies him for a month's trial. Simpson makes his debut at Southampton to-day. Marsden Colliery,

WHO IS THIS ?



Here is another old city player.

CAN YOU IDENTIFY HIM ?

If so, send your solution on the coupon below, addressed to:—
Editor, Programme, Highfield Road, Coventry.

A centre stand ticket will be sent to the reader sending the first correct answer opened. Letters which must carry a three-halfpenny stamp, must reach our office by first post Tuesday.

The first solution opened last week, was sent by Mr. H. Quinney, 63 Bond Street, Coventry, who identified the photo as George Chaplin.

COUPON NO. 11.

I identify the photo as.....

Name

Address

.....



THE WEEK'S DIARY

SUNDAY

MONDAY

TUESDAY

Remembrance Day. Armistice signed 1918.
Lest we Forget.

WEDNESDAY

THURSDAY

Mid-week League. At 2-45 p.m.

WALSALL

FRIDAY

London Combination. At 2-45 p.m.

West Ham

SATURDAY

Football League. At Bristol.

BRISTOL ROVERS.



Football League :

(A) City 0 Southend United 2
(Barnett)

London Combination :

(H) City 6 Tottenham Hotspur 2
(Alsop 4, Ball, Bowden) (Cook, Thompson)

This is the time of the year when youth predominates. With the grounds getting heavier, youthful stamina will have an important bearing on results for some time to come. It is also the period when teams who have not made provision for this change in conditions will have seriously to consider their future, to find out whether in their midst they have youth who can be regarded as a player with a ninety minutes qualification. One may be excused perhaps, in reviewing the doings of the Combination game at Highfield Road on Saturday, before those of the League side at Southend. The reason is obvious. As expected the Hotspur eleven contained men of repute and experience, but the junior Bantams have the satisfaction of knowing that they put up a good game, and what is more greatly pleased the crowd. The game will be classified as one of the best seen on the ground in the London Combination. It was a football treat, while applause, often so rare, was freely bestowed upon the players. Alsop's play was greatly admired, while one of his goals was among the finest ever seen on the ground. The match proved something of an individual triumph for him and a repetition of work of this nature will sooner or later find its reward. The number of gains to the Combination eleven now stand at ten.

As a result of a 2-0 defeat at Southend, the League side have descended to the 12th position in the chart of merit, and have further reduced their number of points gained to 4. It was not a classic encounter, the elements of the weather being against it. Rain fell throughout the game, there was also a greasy ball and troublesome wind. But it was not the scramble that some would have us believe. There were at times bright patches of clever football by both teams and plenty of exciting incidents. Southend were

perhaps on the run of play slightly superior. Strangely enough, though Southend deserved their two goals, the manner in which they were scored was by no means convincing. Much better and deserving shots failed to register. Barnett scored both goals and in each instance a Coventry defender lent his unwilling assistance. The first, after thirty minutes, was a hard drive following a corner kick, and the ball went through off Baker. Fifteen minutes after the interval, Barnett obtained his second, Crown helping the ball over the line in attempting to kick clear. It requires a strong and determined effort to-day against Luton who are not doing any too well this season although they scored five goals against Fulham on Saturday. Highfield Road, with one exception in the F.A. Cup, has never been a happy hunting ground for them. The clubs have met on eighteen occasions, and of the eight Football League games at Highfield Road the "Bantams" have won six and drawn two.

The official attendance last Saturday
was 4,835.

The Late A. J. Dickenson.

It is with regret that we learn of the death of Mr. A. J. Dickenson, a respected member of the League Management Committee. Like the late Charles Crump, John Lewis, and Harry Keys, he died in harness, and the game is all the poorer for his death. The League has sustained a severe blow during the past year or two from this cause. Perhaps the only quarrel that we have with these happenings is that it separates us from those we respect. It stops our communication and ends our fellowship. The place to which we resorted for counsel and guidance, for sympathy and comfort, is empty and the voice silent.

PLAY THE GAME to yourself
and SUPPORT the
ONLY TRADING ORGANISATION UNDER
YOUR OWN CONTROL.
EVERYTHING FOR THE HOME.

For full particulars apply:-

**Coventry & District Co-operative Society, Limited,
West Orchard.**

Hamilton's

For all Varieties of FOOTWEAR

7, 8 and 9 Market Street,
Coventry.

Malt Shovel Inn, Stonebridge.

ATKINSON'S ALES.

Good Draw-in for 200 Cars.
Old and New Friends will be welcome.
Large and Small Parties Catered For.

Proprietor: Billy Slade.

Phone 102 HAMPTON.

The Printers who DO Satisfy.

The "Swanswell"
Printing Co

24b. Bishop St Coventry.

We can Satisfy YOU!

PHONE 4934.



Select
your
Motor
Clothing
from

LYNES,
Army & Navy Stores

Teams for to-day's Match, November 8th, 1930.

FOOTBALL LEAGUE.

Coventry City / v. Luton Town. 2

COVENTRY CITY (Blue and White Stripe Shirts, Black Knickers)

Right

Allen (1)

Left

Crown (2)

Watson (3)

Smith (4)

Baker (5)

Bell (6)

Reay (7)

Roe (8)

Phillips (9)

Lake (10)

Pick (11)

Referee:

Mr. W. J. LEWINGTON,

Croydon.



Linesmen:

Messrs. C. N. Wood.

F. Smith.

Bryce (12)

Dent (13)

2 Rennie (14)

McNestry (15)

Heslop (16)

Fraser (17)

Gale (18)

Clark (19)

Left

Hodgson (20)

Banes (22)

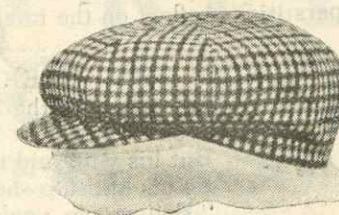
Kingham (21)

Right

LUTON TOWN (White Jerseys, Black Knickers)

In the event of any alterations in the above teams a board giving particulars will be sent round the ground

The LANARK CAP



Manufactured by Ayres and Smith,
London

Made from the Finest
Cloth. Hand Finished
Throughout.

SOLE AGENTS—

STATHAM &
FENSOM,

6 King's Head Buildings,
Coventry.

COMPLETE GENTS OUTFITTERS

"THE QUEEN'S."

Coventry's most comfortable Hotel.

Spacious Dining Room and Lounge. Fifty Bedrooms.

LUNCHEONS. TEAS. DINNERS.

High-Class Cuisine.

Phone 2424.

Telegrams: Queen's, Coventry.

R. J. OXLEY, Resident Proprietor.

WINE LODGE HOTEL

THE BURGESS

.....

TRUMAN'S

BURTON ALES

AND

LONDON STOUT

BREWERS SINCE 1666.

FOR ALL
MEDICAL & SURGICAL REQUISITES

J. Robinson, M.P.S.
Chemist,

WALSgrave ROAD, WYKEN.

Specialist in TRUSS, BELT, and ELASTIC
STOCKING FITTING.

Here and There.

Two hundred and one goals were scored in Saturday's Football League games. This was a record aggregate, the previous highest number scored in one day being 199 on January 7th, 1928.

The unlucky number 13 proved quite pleasing to Manchester United. But of course there are always exceptions. Such puerile superstitions reflect on the intelligence of man, so we are told.

THE WEEK'S LIMERICK.

In the palace the Bishop said: "Dear!
We're thirteen at luncheon, I fear."
But his wife said in haste,
As his lordship she faced:
"Believe me, you're not counted here."

According to a special correspondent to the "Athletic News" records prove Aston Villa to be the finest club in the country. He awards points for League Championships, Runner-up, Cup Finalists, Semi-finalists. Their total is 44 points

Other clubs come out in the following order:- Blackburn Rovers 26, Newcastle United 22, Everton 21, Sunderland 20, Sheffield Wednesday 19, Sheffield United 18, Huddersfield Town 17, Preston North End 16, Liverpool 15, and West Bromwich Albion 14.

★
Always ask for
Ansell's
The Better Beer

"Its easy to pay the Jay way"

JAY'S

—offer a suitable FREE GIFT FOR EVERY ROOM

Latest Triple Mirror Bed-
room Suite, with large
drawer accommodation.

16 gns.
or 10/- Monthly.

A FULL SIZE
BEDSTEAD
FREE WITH
EVERY BED-
ROOM SUITE



Fine Bedroom Suite, in solid Oak; frameless
mirrors to Dressing Table, large drawer
accommodation; including a full-size Bedstead

This full panel Bed is FREE.
Jay's, 4 Fleet St., Coventry.

Supporters' Club Gossip.

BY "THE SEC."

On Saturday last 1,116 penny-on-the-ball tickets were sold realising £4 13s. The ball was won by Mr. H. Mitchell of Longford who very kindly gave it back to us to be sold for the benefit of our funds. We are most grateful to Mr. Mitchell. The centre stand tickets were not claimed.

The Committee are pleased that supporters are rallying round us so well with this scheme and in thanking everyone for the help given so far, we confidently appeal for a yet greater measure of support. It will mean a big struggle to raise the amount required in order to clear the new Cover of debt. We, however, have confidence that all those who use it week by week realise the benefit it bestows on wet Saturdays and in consequence will do their utmost by patronising our ticket sellers.

Christmas Draw.

Anyone requiring books of tickets for this draw can be supplied by the following:— Mr. Clarke, 43 Russell St., (Soc. Secretary); Mr. C. Shale, 21 Argyle St., (Chairman); Mr. G. Mitchell, 25 George St., (Asst. Sec.); Mr. C. S. Morris, 90 King William St., (Gen. Sec.); Mr. E. W. Hammersley, 60 Primrose Hill St., (Treasurer).

Poultry Drive.

Don't forget **December 22nd.**



To-morrow, Sunday, Nov. 9th.

10.50 a.m. London*	5	0
Northampton	2	6

Monday, Nov. 10th.

8.40 a.m. London*	10	6
-------------------	----	---

Wednesday, Nov. 12th.

8.40 a.m. London*	10	6
12.25 p.m. London*	5	0
(Restaurant Car Train)		

Thursday, Nov. 13th.

8.40 a.m. London*	10	6
-------------------	----	---

Wednesday, Thursday, and Friday, Nov. 12th, 13th, and 14th.

9.25 a.m. Derby	5	0
(Races)		

Saturday, Nov. 15th.

8.40 a.m. London*	10	6
12.15 p.m. London*	5	0
(Kensington)		
11.5 a.m. Cheltenham*	4	0
Gloucester*	4	6
Bristol*	5	0
(Coventry City v. Bristol)		
12.55 p.m. Liverpool*	5	6

Sunday, Nov. 16th.

10.40 a.m. Stoke*	4	0
Macclesfield*	4	6
Stockport* and		
Manchester*	5	0
11.15 „ London*	5	0

*Period Bookings also, at Higher Fares

Cycle and Motor Cycle Show at Olympia, November 10th to 15th.

Weekly Season Tickets issued from Coventry to London up to November 15th. First Class £3 18s. 6d. Third Class £2 7s. 6d. for 7 days, additional days pro rata.

League Tables.

Football League, Div. 3.

	Pld	W.	L.	D.	For	Ag.	P.
Notts C.	14	11	0	3	41	13	25
North'ton	13	9	1	3	22	6	21
Torquay U.	14	8	4	2	39	24	18
Brentford	14	7	3	4	31	22	18
Crystal P.	13	7	3	3	44	26	17
Fulham	13	6	4	3	19	25	15
Brighton	14	5	4	5	19	19	15
Gillingham	13	5	4	4	26	18	14
Southend	13	6	5	2	28	23	14
Watford	13	6	5	2	26	24	14
Bourne'mth	13	5	4	4	26	24	14
Coventry C.	13	5	5	3	26	22	13
Swindon	14	6	7	1	27	28	13
Exeter City	14	4	5	5	25	30	13
Luton T.	14	4	6	4	21	27	12
Bristol R.	14	4	6	4	22	33	12
Queen's P.	13	4	8	1	23	28	9
Clapton O.	13	3	7	3	20	29	9
Norwich C.	13	2	7	4	14	28	8
Walsall	13	3	9	1	27	40	7
Newport C.	13	3	9	1	22	38	7
Thames	13	2	9	2	14	34	6

London Combination.

	Pld	W.	L.	D.	For	Ag.	P.
Arsenal	13	10	3	0	36	11	20
Chelsea	12	9	2	1	30	9	19
Leicester C.	12	9	2	1	35	15	19
Southend	14	8	3	3	40	24	19
Swansea	12	8	3	1	28	19	17
Millwall	13	8	4	1	24	21	17
Brentford	14	6	5	3	27	31	15
Fulham	12	7	5	0	23	23	14
Coventry C.	12	6	5	1	33	23	13
Queen's P.	12	6	6	0	30	27	12
Portsmouth	12	4	4	4	24	32	12
Crystal P.	14	5	8	1	33	28	11
Luton	12	4	5	3	27	24	11
Tottenham	13	5	7	1	24	29	11
Cardiff City	14	3	7	4	28	37	10
Reading	13	4	7	2	26	38	10
Clapton O.	15	4	9	2	21	38	10
West Ham	13	4	8	1	25	34	9
Brighton	12	4	7	1	24	36	9
South'pton	13	4	8	1	22	34	9
Watford	12	4	8	0	21	32	8
Charlton	13	3	9	1	19	35	7

You'll Always Hear it Best

AT THE

ALEXANDRA

Coventry. Phone 4716.

The Premier Talking House of the Midlands. **Western Electric Sound System**, and the only Theatre in Coventry with **The Magnascope Wide Screen**.

Continuous Performance Daily, 2-30 to 10-30. Special Performance Every Sunday at 8-0. Doors open 7-0

COMMENCING

Monday, Nov. 10th.

For Six Days Only

BEBE DANIELS IN "LOVE COMES ALONG"

Tullulah Bankhead played the feminine lead in the stage play

Bebe Daniels is a joy in Tallulah's part

An exceptional Supporting Programme includes

"A NIGHT IN A SHOOTING GALLERY."

THE COVENTRY SILVER BAND

are now booking engagements for next season. For Terms apply

MR. F. PUGH,
74 Cox Street,
Coventry.

Midland Mid-Week League

	Pld	W.	L.	D.	For	Ag.	P.
Aston Villa	6	3	3	0	17	19	6
Derby C.	3	2	0	1	16	6	5
Birm'ham	5	2	2	1	11	10	5
Coventry C.	4	2	2	0	7	6	4
Walsall	4	1	2	1	7	11	3
West B. A.	5	1	3	1	5	14	3
Stoke City	1	1	0	0	3	2	2
Port Vale	2	1	1	0	7	5	2

Record of Attendances & Goals.

Name.	F.L.		L.C.		Mid-Week League		Total	
	At.	G.	At.	G.	At.	G.	At.	G.
Allen	13	0	0	0	0	0	13	0
Alsop	0	0	5	6	4	2	9	8
Baker	13	0	0	0	0	0	13	0
Bell	13	1	0	0	0	0	13	1
Bowden	4	1	7	1	3	1	14	3
Ball	6	1	6	2	0	0	12	3
Crown	13	0	0	0	0	0	13	0
Gray	0	0	7	0	1	0	8	0
Lake	12	6	0	0	0	0	12	6
Loughlin	5	1	7	9	1	0	13	10
McNab	3	0	7	2	1	0	11	2
Norrington	0	0	6	0	2	0	8	0
Owen	0	0	5	0	3	0	8	0
Plummer	0	0	11	0	4	0	15	0
Pick	9	2	4	3	0	0	13	5
Phillips	11	9	2	2	0	0	13	11
Reay	4	0	8	0	1	0	13	0
Richards	9	2	3	0	1	0	13	2
Roe	3	0	7	2	3	1	13	3
Stokes	1	0	5	0	2	0	8	0
Smailes	9	0	3	0	0	0	12	0
Smith	0	0	9	0	3	0	12	0
Tilford	0	0	12	0	3	0	15	0
Watson	13	0	0	0	0	0	13	0
Widdowson	2	1	8	5	1	0	11	6
Wilken	0	0	7	0	3	0	10	0
Opponents	0	2	0	1	0	0	0	3

The following amateurs have received trials:—

Bass	0	0	0	0	1	0	1	0
Bratby	0	0	0	0	1	1	1	1
Lillycrapp	0	0	0	0	1	0	1	0
Lockey	0	0	3	0	0	0	3	0
O'Brien	0	0	0	0	1	2	1	2
Parkes	0	0	0	0	2	0	2	0
Perry	0	0	0	0	2	0	2	0

Telephone:
4733.Telegrams:
"Quality."**BERNARD PYE**55 Smithford Street
and Fish Market,
COVENTRY.

For Fish, Game and Poultry

HAROLD F. WELCH
(late of Coventry City F.C.)will be pleased to welcome Old
and New Friends at the**SPITTLEMORE
INN**

Lower Ford Street.

NORTHAMPTON ALES.

Wines and Spirits, finest quality

League Fixtures and Results.

Football League.

Date	Opponents	F	A
Aug. 30	Notts County	h	1 2
Sept. 1	Fulham	a	0 0
6	Clapton Orient	a	3 3
8	Swindon Town	h	4 0
13	Thames	h	7 1
17	Swindon Town	a	0 4
20	Norwich City	a	2 2
27	Queen's Park Ran.	h	2 0
Oct. 4	Walsall	a	2 1
11	Northampton	h	0 1
18	Brentford	a	2 1
25	Crystal Palace	h	3 5
Nov. 1	Southend United	a	0 2
8	Luton Town	h	1 2
15	Bristol Rovers	a	
22	Newport County	h	
29	F.A. Cup tie		
Dec. 6	Exeter City	h	
13	Brighton & Hove	a	
20	Torquay United	h	
25	Bournemouth & B.	h	
26	Bournemouth & B.	a	
27	Notts County	a	
Jan. 3	Clapton Orient	h	
10	Gillingham	a	
17	Thames	a	
24	Norwich City	h	
31	Queen's Park Ran.	a	
Feb. 7	Walsall	h	
14	Northampton	a	
21	Brentford	h	
28	Crystal Palace	a	
Mar. 7	Southend United	h	
14	Luton Town	a	
21	Bristol Rovers	h	
28	Newport County	a	
April 3	Watford	a	
4	Gillingham	h	
7	Watford	h	
11	Exeter City	a	
18	Brighton & Hove	h	
25	Torquay United	a	
May 2	Fulham	h	

London Combination.

Date	Opponents	F	A
Aug. 30	Clapton Orient	a	1 3
Sept. 1	Charlton Athletic	h	4 1
6	Portsmouth	h	5 2
13	Arsenal	a	2 0
15	Watford	h	3 1
20	Cardiff City	h	2 2
27	Queen's Park Ran.	a	3 4
Oct. 4	Swansea Town	h	4 0
11	Crystal Palace	a	0 2
18	Reading	h	0 2
25	Brighton & Hove	a	3 4
Nov. 1	Tottenham	h	6 2
8	Southampton	a	
15	West Ham	h	
22	Southend United	a	
29	Luton Town	h	
Dec. 6	Millwall	a	
13	Brentford	h	
20	Chelsea	a	
25	Leicester City	a	
26	Leicester City	h	
27	Clapton Orient	h	
Jan. 3	Portsmouth	a	
17	Arsenal	h	
24	Cardiff City	a	
31	Queen's Park Ran.	h	
Feb. 7	Swansea Town	a	
14	Crystal Palace	h	
21	Reading	a	
28	Brighton & Hove	h	
Mar. 7	Tottenham	a	
9	West Ham	a	
14	Southampton	h	
28	Southend United	h	
April 3	Fulham	h	
4	Luton Town	a	
6	Fulham	a	
7	Watford	a	
11	Millwall	h	
18	Brentford	a	
25	Chelsea	h	
May 2	Charlton Athletic	a	

Midland Mid-week League.

Date	Opponents	F	A	Date	Opponents	F	A
Sept. 29	West Brom. A.	a	2 1	Feb. 12	Port Vale	h	
Oct. 16	West Brom. A.	h	0 1	Mar. 12	Derby County	h	
22	Aston Villa	a	3 1	16	Walsall	a	
30	Aston Villa	h	2 3	26	Stoke	h	
Nov. 13	Walsall	h		30	Port Vale	a	
Jan. 29	Birmingham	h		Apl. 15	Birmingham	a	
Feb. 4	Derby County	a			Stoke	a	

C. G. DAVIES,

Complete Sports Outfitter.

Note the Address:—

Tel, 4809.

149 FAR GOSFORD STREET, COVENTRY.

A TRIAL SOLICITED.

AGENT for all MANSFIELD BOOTS as supplied to Coventry City F.C.

White Disc	1/2-time	Code	Red Disc	1/2-time
A Arsenal		A Everton		
B Aston Villa		B Wolverhampton W.		
C Birmingham		C Plymouth Argyle		
D West Ham		D Stoke City		
E Blackburn R.		E Port Vale		
F Chelsea		F Notts Forest		
G Blackpool		G Swansea		
H Newcastle United		H Millwall		
I Derby County		I West Brom. Albion		
J Liverpool		J Oldham Athletic		
K Leeds United		K Bournemouth		
L Sheffield W.		L Gillingham		
M Leicester City		M Fulham		
N Manchester United		N Bristol Rovers		
O Manchester City		O Norwich City		
P Middlesbrough		P Brentford		
Q Portsmouth		Q Notts County		
R Huddersfield		R Brighton		
S Sheffield U.		S Queen's Park R.		
T Bolton		T Crystal Palace		
U Sunderland		U Walsall		
V Grimsby Town		V Southend		

Always buy

OLD JOE'S TOFFEE

and be a

Supporter of Coventry City

Made only by GLENN & Co., Ltd., COVENTRY.

GAS FIRES

increase

HOME COMFORT

and reduce

HOUSEHOLD LABOUR

May be hired from 7/8 per annum.

GAS DEPT. SHOWROOMS:

COUNCIL HOUSE,
COVENTRY

WARWICK ROAD,
KENILWORTH

RED HOUSE GARAGE Co., Ltd.

Stoney Stanton Road and

5 Swanswell House Buildings,
WHEATLEY STREET.

Tel. 8352.

Tel. 8352.

Saloon Coaches and Taxis.

Large and small Parties catered for.

Haulage Contractors. 1 to 10 ton.

Lorries for hire. Enquire our Terms.

TYRES. Pneumatic, Solids and

Cushion. All makes. Solid Tyre

Power-press. Electric Inflators.

Tyres fitted and inflated free.

REPAIRS. Private and Commercial
Motor Vehicles.

First Class Service and Prompt
Attention to All Orders.

The Coventry Association and Rugby
Football Clubs contract with us for
their journeys, so why not YOUR
Team or Party.

THE Coventry Permanent

AN IDEAL MEANS

OF INVESTMENT

FREE OF

TAX

EASY

TERMS

FOR HOUSE

PURCHASERS

ECONOMIC

Building Society,

19 & 20, HIGH STREET, COVENTRY.



HANSONS LTD.

ARE SOLE AGENTS
FOR THE GENUINE

“*Pianola*” Piano

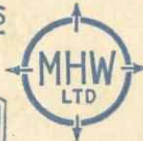
FULL VALUE OFFERED
FOR YOUR OLD PIANO
: IN PART EXCHANGE :

20 HERTFORD STREET AND BRANCHES.



TEL. 4081

6 LINES



CROSS
CHEAPING

MATTERSON

HUXLEY
AND WATSON LTD.
COVENTRY.

HALES
STREET

FOR

PRESENTATION GOODS

OF EVERY DESCRIPTION.

.....

**CUTLERY
CANTEENS**

A SPECIALITY.

.....

CALL AND INSPECT OUR SHOWROOM,
YOU WILL NOT BE PRESSED TO BUY.