

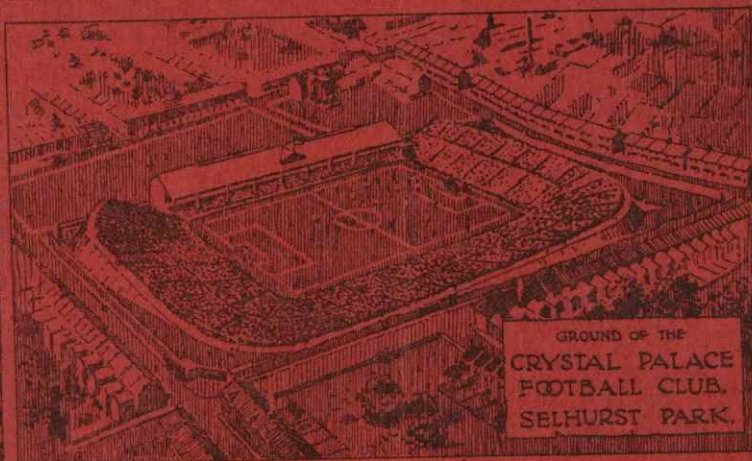
CRYSTAL PALACE

FOOTBALL



CLUB

Official Programme



GROUND OF THE
CRYSTAL PALACE
FOOTBALL CLUB.
SELHURST PARK.

NEXT HOME MATCHES

Wednesday, 10th September. *London Combination*
MILLWALL RESERVES

KICK-OFF 6.30 p.m.

Saturday, 13th September. *London Combination*
SOUTHAMPTON RESERVES

KICK-OFF 3.30 p.m.

Wednesday, 17th September. *League Match*
NORTHAMPTON

KICK-OFF 6 p.m.

S. C. WILSON



For your Health's sake
eat
DAREN
THE
BEST BROWN BREAD

Awarded the Certificate of the
INSTITUTE of HYGIENE for
PURITY and QUALITY.

BAKED BY ALL HIGH-CLASS BAKERS.

Telephone: CROYDON 2340.

Drive Yourself

NO DEPOSIT.

FULLY INSURED.

NEW CARS ONLY.

UNLIMITED MILEAGE.

WRITE, PHONE
OR CALL—

SEYMOUR'S,

SPECIAL
WINTER
TERMS.

North End,
CROYDON.

VALUE!

Exchanges — Deferred Terms without Insurance
MOTOR-CYCLES PURCHASED FOR CASH

Cash Price Gns.				Deposit.			Monthly Instalments		
				£	s.	d.	£	s.	d.
13	1925	3.48 h.p. O.H.V. A.J.S., 70 m.p.h.	...	5	0	0	18	7	
9	1924	3.48 h.p. Sports A.J.S., tuned engine	...	4	10	0	17	5	
29	1929	3.48 h.p. A.J.S., saddle tank, dynamo	...	7	19	0	2	12	6
33	1929	3.48 h.p. O.H.V. A.J.S., dynamo lighting	...	9	13	0	2	6	8
42	1930	3.48 h.p. O.H.V. A.J.S., dynamo lighting	...	*12	0	0	3	7	3
32	1929	4.97 h.p. 2-port Ariel, dynamo lighting	...	8	12	0	2	6	8
21	1928	4.97 h.p. O.H.V. Ariel, very fast	...	5	11	0	1	12	6
25	1929	2-port O.H.V. Ariel Colt	...	6	15	0	1	15	10
32	1930	Special Competition Colt, dynamo lighting	...	8	12	0	2	6	8
26	1924-25	SS 80 Brough Superior, dynamo lighting	...	6	16	0	1	19	2
42	1927	6.80 h.p. O.H.V. Brough Superior, dynamo lighting	...	*12	12	0	3	10	0
31	1929	4.93 h.p. B.S.A., dynamo lighting	...	8	11	0	2	5	0
42	1930	4.93 h.p. 2-port B.S.A., almost new	...	*12	12	0	3	10	0
29	1929	4.93 h.p. B.S.A., dynamo lighting	...	7	14	0	2	2	11
29	1930	2.46 h.p. 2-port B.S.A., dynamo lighting	...	7	14	0	2	2	11
22	1929	2.49 h.p. B.S.A., saddle tank, almost new	...	6	0	0	1	13	6
8	1925	3.49 h.p. O.H.V. B.S.A., saddle tank	...				Cash only		
6	1925	3.49 h.p. B.S.A., runs splendidly	...				Cash only		
29	1929	2-port Ivory Calthorpe, plated tank	...	7	19	0	2	2	6
39	1930	Ivory Calthorpe, dynamo lighting	...	15	19	0	2	6	8
31	1928	4.98 h.p. O.H.V. Cotton-Blackburn, 80 m.p.h.	...	8	11	0	2	5	0
17	1929	4-stroke Coventry Eagle, pressed steel frame	...	5	0	0	1	6	5
23	1929-30	1.72 h.p. Super Sports Dot-Villiers, as new	...	6	3	0	1	15	0
8	1926	E.W. Douglas, equipped, taxed...	...				Cash only		
31	1929	3.48 h.p. O.H.V. Dunelt Riviera, dynamo lighting	...	8	11	0	2	5	0
34	1929	4.88 h.p. 2-port Enfield, dynamo lighting	...	10	14	0	2	6	8
14	1928	2½ 4-stroke Enfield, saddle tank	...	5	0	0	1	0	4
10	1925	3.46 h.p. O.H.V. Enfield, very fast	...	5	0	0	13	4	
19	1929	1.72 h.p. Super Sports, Francis-Barnett	...	5	0	0	1	9	11
28	1930	2.47 h.p. Empire Model, Francis Barnett	...	7	13	0	2	0	10
27	1928	4.99 h.p. Super Sports Twin James	...	7	7	0	2	0	0
19	1929	2.47 h.p. Levis, dynamo lighting	...	5	0	0	1	9	11
24	1929	2-port Matchless, as new	...	6	14	0	1	15	10
20	1928	4.98 h.p. Matchless, fine condition	...	5	10	0	1	5	10
47	1930	Silver Arrow Matchless, electric model	...	*13	17	0	3	17	6
14	1927	4.98 h.p. Matchless, balloons	...	5	0	0	1	0	4
9	1926	4.98 h.p. Matchless, very powerful	...				Cash only		
39	1930	3.46 h.p. 2-port Special New Imperial, dynamo	...	*11	4	0	3	3	4
17	1928	3.46 h.p. O.H.V. New Imperial, fast	...	5	0	0	1	6	5
32	1929	3.46 h.p. 2-port O.K. Supreme, dynamo lighting	...	8	12	0	2	6	8
47	1930	2-port P & M Panther, dynamo lighting	...	*13	17	0	3	17	6
37	1929	2-port P & M Panther, dynamo lighting	...	13	17	0	2	6	8
24	1929	2.48 h.p. Raleigh, saddle tank	...	6	14	0	1	15	10
8	1925-26	2.48 h.p. Raleigh, very smart	...				Cash only		
29	1928	Rudge Special, dynamo lighting	...	7	19	0	2	2	6
10	1926	Rudge, 4-speed, dynamo lighting	...	5	0	0	13	4	

*These terms include a full comprehensive insurance policy.

Also 150 Others

G. GRAY, The Used Motor-Cycle Specialist

Chief Address **STRATHMORE ROAD, WHITEHORSE ROAD, CROYDON**

"THE CAPTAIN"

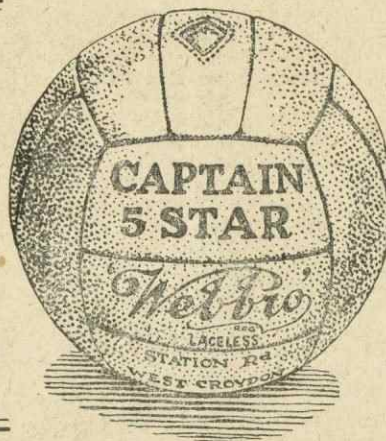
Sports & Athletic Outfitter

To the Crystal Palace Football Club.

NOTED FOR
THE "CAPTAIN 5-STAR" FOOTBALL.
[Webbro Laceless Patent No. 221938]

Used by the
Crystal Palace
Football Club.

CAPTAIN
5-STAR 22/6.
4-STAR 19/6.
3-STAR 17/6.
Laced Pattern.
5-STAR 22/6.
4-STAR 19/6.
3-STAR 17/6.
2-STAR 15/6.
1-STAR 12/6.
MARK I. 10/6.



As used in the
English Cup Final.
Wembley, 1925.
England v. Scotland.
England v. Wales.
England v. Ireland.
(Amateur.)
New Zealand v. China.
Amateur Cup Final.
England v. Scotland.
1926, &c.

FOOTBALL JERSEYS	...	22/- to 54/- per doz.
FOOTBALL KNICKERS	...	1/9 to 6/11 ,, pair
FOOTBALL STOCKINGS	...	1/6 to 3/6 ,, pair
FOOTBALL BOOTS	...	8/11 to 17/6 ,, pair
FOOTBALL SHINGUARDS	...	10½d. to 4/6 ,, pair
SPECIAL BOOTS For REFEREES (Black), 14/6 ,, pair		
GOAL POSTS, NETS, CORNER FLAGS Etc., to Order		
SPECIAL TERMS TO CLUBS & SCHOOLS		

Match Dart Boards and Darts, Draughts, Chess, Cards, etc. always in stock
CYCLING SHOES, CAPES, LEGGINGS, Etc.

"THE CAPTAIN"
22 STATION ROAD, WEST CROYDON

TELEPHONE 0663.

Crystal Palace Football Club, Ltd.

OFFICIAL PROGRAMME.

President : F. J. NETTLEFOLD, Esq.

Directors : SYDNEY BOURNE (Chairman). LOUIS T. BELLATTI (Vice-Chairman)
M. DERISLEY. R. S. FLEW. F. GATES. H. WATSON HUMPHRIES.

Secretary : Manager :
E. F. GOODMAN. F. MAVEN.

Registered Offices :
Selhurst Park, London, S.E.25.

No. 1. v. LUTON TOWN September 6th, 1930



No Job
too
large.
No Job
too
small.
Let US
quote your
next
enquiry.

THE MODERN PRESS

General Printers
AND
Advertising ::
:: Contractors

Clayton Works

Phone CROYDON 1999

JOHN T. HAYES

Boot Repairer

Mars' Rubbers a Speciality.

Ladies' Shoes Soled & Heeled 2/3. Gent's 3/9

111, FAIRHOLME ROAD, Sutherland Rd.
WEST CROYDON.



A New Campaign.

Another football season has started (accompanied by the now inevitable heat wave) with the usual hopes and fears. Perhaps I should only say hopes for, at the commencement of the campaign, every club seems to regard itself as the potential champion; fears do not come until later on.

In company, no doubt, with the 21 other clubs in the Southern Section of the Third Division we of the Crystal Palace have also started with high hopes. Promotion and nothing less is the goal, a goal which the Club is quite capable of reaching. Success depends upon more than mere ability, it requires determination and the team spirit. This quality seems so strong in the Club at the present time that I feel confident our boys will make a strong bid to return to the Second Division.

Splendid Start.

A splendid start was certainly made at Southend last Saturday when the season opened with a 4-2 victory over the United. The home team were very unlucky to lose the services of Powell, but it is doubtful if they could have staged off defeat even with a full team. Our boys played together with a purposefulness that was good to watch. Every man pulled his weight and for the first match of the season the team work was excellent.

The victory was all the more acceptable in view of the fact that the Kursaal has not been a happy hunting ground for the Palace in recent years, and only last Season the Seaside took full points from us. This season Southend are regarded as strong candidates for promotion so that the Palace win was all the more meritorious. It will please some to



MUSIC SALOON

COLUMBIA RADIO SETS and
GRAMOPHONES

Cash or Deferred Payments

DALE FORTY PIANOS

"His Master's Voice," Columbia,
Regai, Parlophone, &c., Records.

D. L. KING & CO.
20, HIGH STREET, THORNTON HEATH

E. G. GOLDING

Wine, Spirit & Beer Merchant,
58, NORBURY ROAD,
THORNTON HEATH.

Agent for

Lacon's, Hammerton's, Fremlin's,
Whitbread's, Barclay's Truman's &
Watney Combe Reid's Bottled Beers

All Proprietary Brands of Wines
and Spirits Stocked.

Lacon's Yarmouth Ale Drawn from
the Wood.

Orders taken. Deliveries twice daily
Postcards receive prompt attention.

Editor's Desk—continued.

think that the last season in which the Palace won at Southend was that in which they achieved promotion.

The Palace suffered a set-back at Torquay on Wednesday, when they lost 3—1 after leading by a goal at half-time. This need not cause undue alarm, however, for Torquay have a greatly strengthened side this season. We shall face Luton to-day full of hope.

Twenty-Five Years Old.

The Club has just recently celebrated its twenty-fifth birthday. At a dinner given by the Directors at the Greyhound Hotel, Croydon, the other day, presentations were made to Mr. S. Bourne (the Chairman), and Mr. E. F. Goodman (the Secretary), who have been with the Club ever since its inception. General regret was expressed that owing to ill-health Mr. Bourne was unable to be present.

There has been no more enthusiastic supporter of the Crystal Palace F.C. than Mr. Bourne and his insistence upon "sportsmanship first" has done much to build up for the Club such enviable traditions in its comparatively short history. Mr. Goodman has been the mainspring of the Club, which could not have had a more loyal and enthusiastic official. The presentations, which were organised by the Shareholders, took the form of a silver rose bowl to Mr. Bourne, and a clock with Westminster chimes to Mr. Goodman. Both mementoes were suitably inscribed.

Congratulations.

Our congratulations are extended to Mr. W. J. Lewington, the well-known Croydon referee who officiated at the practice match a fortnight ago. He is now on the full League list after only one season on the Supplementary List. This rapid recognition is something of a record and is indicative of the favourable reports that have been received concerning the capable way in which Mr. Lewington handled his games last season.

This month is a busy one for him, as altogether he has to officiate at no fewer than thirteen matches. Nine of these are Football League games and for the opening day of the season he had the important game between Leeds United and Portsmouth. He has also been honoured by the Football Association by being chosen to referee the League Champions (Sheffield Wed.) v. Cup Holders (Arsenal) for the F.A. Charity Shield to be played at Stamford Bridge on October 8th, and has been appointed a Southern representative on the committee of the newly formed association of referees and linesmen of the Football League.

THE BROADWAY OFF-LICENSE

(G. W. WILLIS, Proprietor).

For Wine, Spirits & Bottled Beers

344 & 346, Whitehorse Rd., Croydon

(Five Minutes from Football Ground).

Agent for—

Phone 1032 Thornton Heath

HAMMERTON'S STOUT.



For straw hats is the town of Luton famed,
"Strawplaiters" are the men of Luton named.

This logic then we hope contains no flaw—

May they against our team prove
"men of straw."

Welcome to Luton, old Southern League friends and foes and always sturdy fighters.

They have departed from the past policy by relying to a much larger extent than hitherto on new talent. Only nine of last season's first team will again wear the club colours, with Gale, a young centre half from Southall, and Brown and Rickett, two London junior inside forwards, who made their debut for Luton as professionals at the back end of the season and have yet to win their spurs.

Mr. George Kay, the old West Ham captain, will this year enter on his first full season as Secretary-manager, a position in which he succeeded Mr. John McCartney during last season.

The back division is considerably strengthened by the acquisition of Hodgson and Knox, from West Ham and Burnley respectively. A complete Scottish half-back line has been secured in Muir and McGinnigle from Falkirk, and Richmond from Partick Thistle. In addition there is Hale, who has been with Lincoln City for four seasons.

Of the seven new forwards secured four are extreme wing men, McNestry from Sunderland, and Heslop from Burnley, will improve the right wing, and Slicer and Bryce, from Norwich and Bournemouth respectively, should be satisfactory candidates for the opposite flank.

In addition, there are three experienced inside forwards in Armstrong (Tottenham Hotspur), F. Dent (Swindon), and J. Page (Millwall).

Transfer fees have been paid for twelve of the thirteen new men. In addition, they have secured the signatures to amateur forms of nearly a score of promising young players, several of whom were tried last season.

We give a most cordial welcome to Luton, but—we want the points.

FOR SATISFACTION

Try

R. W. Davis

BUILDER

External and Internal

DECORATIONS RENOVATIONS

and

ALTERATIONS

Domestic Boilers Fitted and
Cleaned Periodically.

Personal Attention.

Best Materials.

245, Selhurst Road

Norwood Junction.

Phone: THORNTON HEATH 2672

SUPPORTERS' CLUB.

Hon. Secretary: Mr. A. Williamson,
20 Croydon Grove, West Croydon.

At the commencement of a new season it is usual for the officers of a Club to announce the policy of the Club for the ensuing period of activities.

We intend to make our club the strongest and best in the country. In regard to strength, last season the Crystal Palace Supporters' Club came second to the Watford Club, whose figures of membership at the close of the Football season constituted a record. Our membership was 1666. Now, this season we aim at 2,000, and up to time of going to press 600 have been obtained. Membership costs but the minimum fee of 1/- (not necessary the maximum), and there is no entrance fee. For the 'bob' you obtain an enamelled seasonal badge and membership card with rules. But the officers appeal to those who join the club to support to the best of their ability the money-making efforts promoted by the club.

Have you thought of taking advantage of the facilities offered to every member of the Club in the purchase of season

tickets for the centre stand on "easy payment system." No charge over and above the actual cost of the ticket is made.

Arrangements for the disposal of these tickets are in the hands of one of the Trustees of the club, Mr. R. S. Moyes, 14, Waddon Close, Croydon, to whom all enquiries are to be addressed.

YOU CAN OBTAIN A SEASON TICKET FOR THE CENTRE STAND, NUMBERED AND RESERVED FOR LESS THAN THE PRICE OF AN UNRESERVED SEAT IN THE WING STANDS.

In regard to travel, it is the declared policy of the club that arrangements for travel will only be made in connection with local Derbies and Cup-Ties, and the annual outing.

MATCH BALL WINNER.—The ball with which the Southend Reserves match was played on Saturday last, 30th August, was won by Mr. J. H. Wright, 147 Bensham Lane, Thornton Heath, with ticket No. K8896.

HAVE YOU PURCHASED YOUR TICKET TO-DAY?—There are plenty of Stewards at all entrances to the ground, enclosures and stands with tickets for sale.



The Reserves did not make such an auspicious start as the First team and, at Selhurst Park, had to admit defeat from Southend United by two clear goals in a London Combination match. The visitors scored a goal in each half. This was a tribute to their opportunities for, owing to the steady play of the Palace defence, they had very few opportunities. The Palace forwards, on the other hand, were far more prodigal with the numerous chances that came their way, and some bad misses were made by the inside forwards. Fishlock was the only forward really to do himself justice.

"The idea of your permitting such a thing! Why didn't you call me when he attempted to kiss you?"

"But, Mamma, how was I to know you wanted to be kissed?"



Sheffield Wednesday have one great ambition, apart from the very natural one of wanting to win the Cup, and that is to equal Huddersfield's feat of winning the First Division championship for the third season in succession. They seem well equipped for it, too, with all their internationals and stars of last season.

A number of prominent Welsh Rugby players are seriously contemplating a change over from Rugby to Soccer. One of these, Iorwerth Jones, the Wales and Llanelli forward who figured in several Soccer games last season and revealed a natural genius for the game, is likely to be given a trial by Swansea.

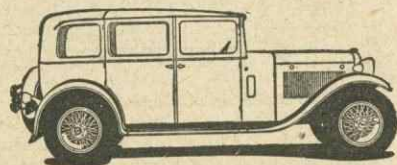
Is it a fact that Arsenal have signed on Don Bradman as centre forward and offered A.P.F. Chapman terms to write their weekly match programme.

TO HIRE A CAR

Private or Drive Yourself

Phone SYDENHAM 5492

EMPIRE MOTORS - PENGES



Repairs and Overhauls
Guaranteed.

Personal Attention
in all matters.

FOR HEALTH'S SAKE

LIVE IN THE

Medway Towns



GILLINGHAM, CHATHAM, ROCHESTER, STROOD.

MOST GO-AHEAD TOWNS IN SOUTH OF ENGLAND.

Also WAREHOUSE, FACTORY SITES and RIVER FRONTAGE TO LET.

Wonderful Opportunities.

GOOD RAIL AND BUS FACILITIES.

**HOUSES and BUNGALOWS NOW BEING ERECTED
IN THE CENTRES OF ALL DISTRICTS.**

FROM £275 FREEHOLD

NO LEGAL OR ROAD CHARGES.

Property For Sale throughout the District.

**C. J. HOWARD'S ESTATE AGENCY,
373, HIGH STREET, CHATHAM. Phone 3175**

H. E. HARFORD*Ladies' and Gent's***Outfitter****HIGH-CLASS MATERIALS.**Customer's Own Materials
made up.**13-15, HIGH STREET****Thornton Heath.**

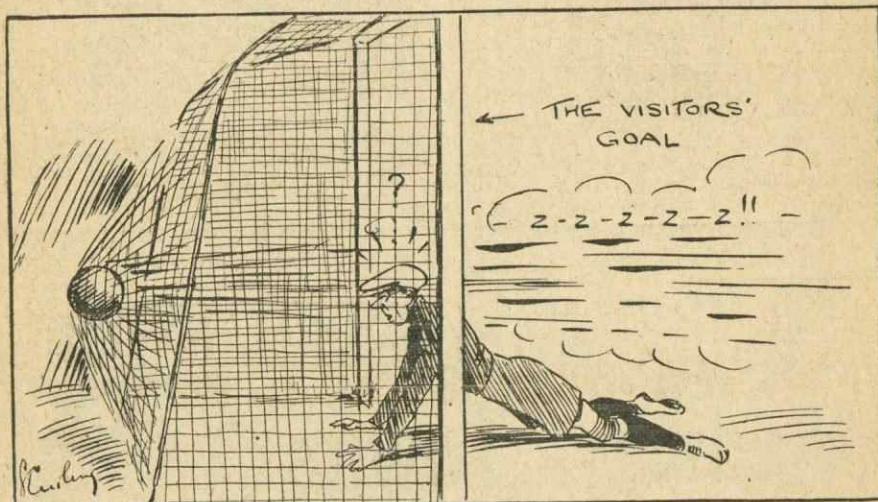
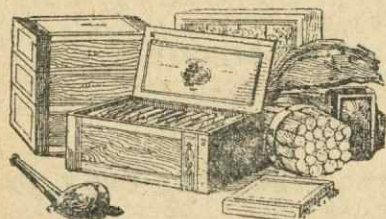
Phone—Thornton Heath 1387



Phone : THORNTON HEATH 3480.

Overhauls & Repairs.**CASTLE ENGINEERING CO.,
Stanley Road, Croydon.****DE-CARBONISING from 17/6**By Latest (*Black & Decker*) System
by which VALVES are RE-GROUND
& RE-SEATED without use of
abrasive paste.**CARS for HIRE**

PLAYS WE SHOULD LIKE TO SEE

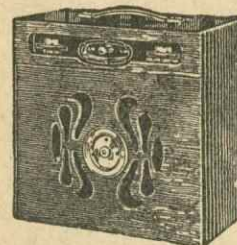
**"THE SILENT WITNESS"**
(NOT at the "Comedy")**KEEN & STREET****64, HIGH STREET,
THORNTON HEATH.**

Phone—Thornton Heath 2212

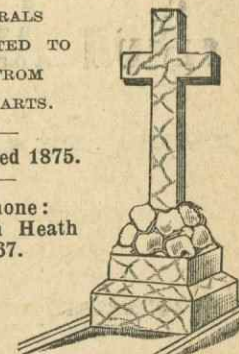
TOBACCONIST, NEWSAGENT AND STATIONER

NOTED FOR PROMPT DELIVERY of NEWSPAPERS & PERIODICALS. Call & Inspect Our Library

Booking Agents for all Leading Coach Services. Away Matches Specially Catered for

**Palace Radio
Supplies,
84, WESTOW STREET,
UPPER NORWOOD***Everything for Wireless
at Store Prices*Accumulators Charged, Collected &
Delivered at Charging Cost only.**PHONE—SYDENHAM 6561**
and we will come and see you.**FUNERALS
CONDUCTED TO
AND FROM
ALL PARTS.**

Established 1875.

Telephone :
Thornton Heath
1667.**ROWLAND BROS.,**

(H. ROWLAND, Proprietor).

**Furnishing Undertakers
& Monumental Masons****301, WHITEHORSE RD.,
CROYDON.****1,000 NEW MEMBERS WANTED (AGE 16 to 45)**

TO JOIN

The Croydon and District Sick Benefit Share-Out Society

(FOR MEN ONLY)

Subscribers to the Friendly Societies' Convalescent Home, Herne Bay.

Prepare for long illness. Sick Pay from 1st day of Illness.**20 WEEKS INCREASE BENEFITS.****CONTRIBUTION** (inclusive) 1/1 per week.

10 weeks at 18/-;

Further 10 weeks at 25/-

FUNERAL BENEFIT £22.

Free Convalescent Home Treatment.

Share-Out in December of each year.

OFFICIAL COLLECTORS IN THE FOLLOWING DISTRICTS—Croydon, Thornton Heath, Penge, Elmers End, Streatham,
Camberwell, Bromley, Downham, Borough, Lewisham.Contributions may be paid or forwarded direct to the **SECRETARY,**
MR. W. MASTERTON, 51, KESTON ROAD, THORNTON HEATH (nr. Pond)**Office Hours : 7 to 9 Mondays. Proposal Forms sent on application.**

Wilton Arms ^{AND} Prince George

FREE HOUSE

TRAM TERMINUS, THORNTON HEATH

THE HOUSES FOR QUALITY

HEADQUARTERS OF THE CRYSTAL PALACE SUPPORTERS CLUB

Music. Sunday Concerts. Billiards.

LUNCHEONS. Private Parties Catered for.

J. H. PALMER, Proprietor. Telephone—Thornton Heath 1628

C. HEWITT & SON

Croydon's Men's and Boys' Complete Outfitters

45/49, Church Street, Croydon

CROYDON'S SPORTS MECCA

CLOTHING, EQUIPMENT and FOOTWEAR for every Sport
FOOTBALL, HOCKEY, BADMINTON, TENNIS, CRICKET
BILLIARDS . DARTS . INDOOR GAMES . HORNBY
TRAINS, MECCANO, SCOUT and GUIDE EQUIPMENT

Whatever your Sports Need you will find it at Hewitt's

THE FIRM WITH 60 YEARS VALUE REPUTATION.

CRYSTAL PALACE

COLOURS—CARDINAL & BLUE

Right

Left

1
Imrie2
Wetherby3
Charlton4
Frost5
Barrie6
Greener7
Harry8
Havelock9
Simpson10
Butler11
Clarke

Referee: J. M. WILTSHIRE.
(Sherborne)

KICK-OFF 3.30 p.m.



Linesmen:

W. J. CURTIS, Red Cross Flag.

H. J. HANCOCK, Blue Cross Flag.

Slicer
12Armstrong
13

McGinnigle
~~Rennie~~
14

Yardley
15McNestry
16Hale
17Clark
18

Richmond
~~McGinnigle~~
19

Richards
20Kingham
21Banes
22

Left

Right

LUTON TOWN
COLOURS—WHITE

Telephone: THORNTON HEATH 1174.

J. Sedgwick

Plumber and :
: : Decorator

28, Colliers Water Lane
THORNTON HEATH.

RESERVED

While you wait

"What is a clue, dad?"

"A clue, my boy, is that which keeps detectives occupied whilst the criminal escapes."

Miss Black: "Miss Elderly carries her age well, doesn't she?"

Miss Green: "But she must be used to it by now."

"What kind of husband do you advise me to get?"

"You get a single man and let the husbands alone."

Seot (to ironmonger): "Twopence is too much for this mouse-trap. Besides, I want a trap that'll kill the mouse before he eats the cheese."

Child: "Papa, why do people cry at weddings?"

Papa (abstractedly): "Most of 'em have been married themselves."

Teacher: "Now, Jimmy, give me a sentence with the word 'seldom' in it."

Jimmy (thoughtfully): "My father had two goats, but he sold 'em!"

Chairman (proposing a vote of thanks to a speaker): "The lecturer has come up to our most sanguinary observations."

Host: "Have a cigar?"

Guest: "No, thanks, I don't smoke."

"Have a drink, then?"

"I really don't drink."

"Perhaps you'd like to go in the ball-room and have a dance?"

"Sorry, but I don't dance."

"Well, my wife has a ball of yarn and some needles, perhaps you'd like to knit a little."

It was a magnificent prospect. Levi a successful business man, had built himself a pretentious riverside cottage, although it lay rather near the river bank. Levi was very pleased with himself. "Yes, I've insured it against fire and burglary for £3,000," he confided to Isaacs, a city friend, on their round of inspection.

"But vot about floods?" asked Isaacs. "You're very near the river, you know."

Levi (thinking hard): "How do you make a flood?"

"CROWN HOTEL"

Restaurant & Delicacy Shop

NORTH END, CROYDON

Telephone: Croydon 1383.

Manager: E. H. Burwood

Restaurant on First Floor. Fully Licensed till 11 p.m.

Music in Hall every Evening.

NOTED FOR FINE SELECTION of WINES and SPIRITS

BARCLAY'S BEERS

Large Variety of SNACKS in Saloon Bar.

LUNCHEONS served in all Bars

DON'T

PUT YOUR SHIRT ON
A MATCH.

BUT IF YOU DO, AND LOSE,
BE SURE TO
BUY A NEW ONE

(FROM)

MANDER'S

*The Store where
money goes
farthest.*

TAILORING.

Ready to Wear,
or to Measure.

Overcoats, Lounge Suits,
Plus Fours, Dress Suits,
etc.

You can get Everything for
Men and Boys' Wear

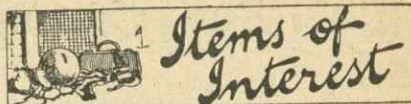
(FROM)

MANDER'S

904, LONDON ROAD
THORNTON HEATH.

Near the Pond,
Corner of Lyndhurst Road.

**PALACE SUPPORTERS
SUPPORT A
PALACE SUPPORTER**



It is just as well at the start of the season for clubs, players, and spectators to become acquainted with changes that have been made since the previous campaign.

So far as the rules governing the Association are concerned changes are practically nil. There is also no change in the laws of the game; but an official decision has been given of the meaning of the word "stand" in Law 17, which refers to the taking of the penalty kick. The Law says:—

"The opponents' goalkeeper must stand on his own goal line until the ball is kicked."

"Stand" is now defined as "must not move his feet."

Players should also note they—
"Must not question a referee's decision, but accept it without demur. To approach and argue with a referee, to touch him or show dissent is ungentlemanly behaviour for which a player must be cautioned and on a repetition of it be ordered off."

Careful notice of the latter instruction should save much unpleasantness on the field.

* * * * *

It will not be surprising to find Frank Osborne, the international forward of Tottenham Hotspur, on the look-out for another club. A natural centre, he has been pitch-forked into other positions which do not suit him, the official excuse being that he was not heavy enough for the buffeting a leader gets.

* * * * *

Glasgow is delighted. The Corinthians are coming back to revive the New Year's Day fixtures with Queen's Park. The Scottish League, in their mercy, have allowed the Hampden club to transfer their League game with Ayr United from Ne'erday to Christmas Day. So Queen's Park will gain both ways.

* * * * *

Bristol soccer fans are interested in Brentford this season, for the Griffin Park club now includes Foster, Blakemore, Sherlaw and Roberts, all formerly of Bristol. If the Bees hope for promotion they may probably find Bristol Rovers one of the most serious obstacles in their path.

LEAGUE TABLES.

For the "FINAL" word on
all Motoring Matters,
consult Specialists.

The Proprietor's 25 years'
experience is at your service

ANY MAKE OF CAR SUPPLIED.

Repairs. Overhauls.
Spares. Petrols. Oils.
ETC.

SATISFACTION GUARANTEED

SHAW'S

SERVICE STATION
AND GARAGE,

48, Croydon Road
PENGE, S E.20

PRESENTATION CAPS,
EMBROIDERED & METAL

BADGES & RIBBONS

For Universities, Colleges,
Schools & Athletic Clubs.

Manufactured for
Outfitters and Trade Houses
only, by

GEORGE KENNING & SON

1/4, LITTLE BRITAIN,
.. LONDON, E.C.1.

And at Liverpool, Manchester and
Glasgow.

Ribbon Factory: Coventry.

SUPPORT

THE

CLUB!

SUPPORT

THE

ADVERTISERS

GOOD

VALUE

FROM

BOTH.

Glico No. 1
ANTI-PINKING
MOTOR SPIRIT

IN THE FORWARD LINE
OF MOTOR SPIRITS

Glico
MOTOR OILS

Local Depot for Trade only—

GLICO PETROLEUM LTD.
The Southern Railway Goods Yard,
Tel. Croydon 1022. Selsdon Rd., S. Croydon.

THE
"THREE TUNS"
HIGH STREET, BECKENHAM.

109 & 54a, Buses pass the door

THE HOUSE FOR CONGENIAL
COMPANY, CIVILITY & COMFORT

Noted for LUNCHEONS and DINNERS

The only house in Beckenham selling
Bass's Bitter Ale on Draught,
Special Catering for Footballers & Parties
WINES AND SPIRITS
OF THE BEST QUALITY.

Headquarters of the Beckenham Bowling
Club and Beckenham Football Club.

Phone: Proprietor:
Beckenham 0259. J. W. Bonham

KEY OF THE BOARD.

TO-DAY'S LEAGUE MATCHES

Code	Matches	Half-Time	Code	Matches.	Half-Time
A	Arsenal Leeds U.		G	Brentford Bristol R.	
B	Aston V. West Ham		H	Clapton Orient Coventry C.	
C	Chelsea Manchester U.		K	Norwich Queen's Park R.	
D	Charlton Millwall		L	Notts C. Fulham	
E	Wolverhampton Tottenham H.		M	Thames Walsall	
F	Bournemouth Southend		N	Watford Swindon	

CASH ADVANCED

With or WITHOUT Security

£10 to £2,000

— BY —

R. J. HARMON

Stuart House, Falkland Road,
KENTISH TOWN, N.W.5

Phone—North 2925.

Established 16 years

The Ambition of every Footballer is to obtain a Cup-Final Medal

Telephone :
THORNTON
HEATH
1225.



Furniture
Warehoused.
—
Estd. 1897.

Our Ambition is to obtain you as a satisfied Customer.
Let us estimate for your next removal !

Chief Office : **95, Windmill Road, W. Croydon**

SOUTH NORWOOD BENEFIT & SHARING OUT SOCIETY

(Established 1902.)

Reg. Friendly Society, 2006 Surrey.

AGE of ADMISSION—14 to 45.

A. Section. Contribution 9d. a week
Sick Benefit ... 14/-
£20 Funeral Benefit for
Member or Member's Wife

B. Section. Contribution 1/6 a week
Sick Benefit ... 28/-
£40. Funeral Benefit for
Member or Member's Wife

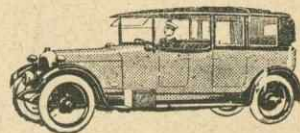
**NO ENTRANCE FEE
NO DEATH LEVIES**

Management Fund 6d. and 1/- qtr.
Benevolent Fund 6d. and 1/- ann.

The Club is held at Birchanger
Road Schools, South Norwood,
every SATURDAY Afternoon
between 2.30 and 5.30

SECRETARY—

Mr. W. SIMMONS,
48, Parnham Rd., Thornton Heath



Cars and Coaches

For PRIVATE HIRE.

All Occasions.

We follow the First Team to
all Away Matches, starting
from THE GLO'STER,
Whitehorse Road.

**THEATRES, DANCES & MASONIC
PARTIES in Town a Speciality.**

The Glo'ster Garage,
Hampton Road, West Croydon.
(Proprietor: G. ELLIS).
Phone: Thornton Heath 2158.

J. M. OCKELFORD & SONS

FAMILY BUTCHERS

Noted for
**ENGLISH and
SCOTCH MEAT**



**BEEF and PORK
SAUSAGES
a Speciality**

115, Beulah Road, Thornton Heath

Phone: THORNTON HEATH 1642

THE FIXTURE LIST

FIRST TEAM.			F A	RESERVE TEAM.			F A
1930	Opponents	Ground		1930	Opponents	Ground	
Aug. 30	Southend United	... Away	4 2	Aug. 30	Southend United	... Home	0 2
Sept. 3	Torquay United	... Away	1 3	Sept. 6	West Ham United	... Away	
" 6	Luton Town	... Home		" 10	Millwall	... Home	
" 8	Northampton Town	Away		" 13	Southampton	... Home	
" 13	Bristol Rovers	... Away		" 15	Luton Town	... Away	
" 17	Northampton Town	Home		" 20	Tottenham Hotspur	Away	
" 20	Newport County	... Home		" 22	Southampton	... Away	
" 27	Gillingham	... Away		" 27	Brighton & Hove A.	Home	
Oct. 4	Exeter City	... Home		Oct. 1	Brentford	... Home	
" 11	Brighton & Hove A.	Away		" 4	Reading	... Away	
" 18	Fulham	... Home		" 11	Coventry City	... Home	
" 25	Coventry City	... Away		" 18	Leicester City	... Away	
Nov. 1	Walsall	... Home		" 25	Fulham	... Home	
" 8	Queen's Park Rangers	Away		Nov. 1	Charlton Athletic	... Away	
" 15	Norwich City	... Home		" 8	Watford	... Home	
" 22	Thames	... Away		" 15	Clapton Orient	... Away	
" 29	E.C.1st Round	...		" 22	Portsmouth	... Home	
Dec. 6	Notts County	... Away		" 29	Arsenal	... Away	
" 13	Watford	... Home		Dec. 6	Cardiff City	... Home	
" 20	Bournemouth	... Away		" 13	Queen's Park Rangers	Away	
" 25	(C.D.) Brentford	... Away		" 20	Swansea Town	... Home	
" 26	(B.D.) Brentford	... Home		" 25	(C.D.) Chelsea	... Home	
" 27	Southend United	... Home		" 26	(B.D.) Chelsea	... Away	
1931				" 27	Southend United	... Away	
Jan. 1		1931			
" 3	Luton Town	... Away		Jan. 3	West Ham United	... Home	
" 10	Clapton Orient	... Home		" 10	Millwall	... Away	
" 17	Bristol Rovers	... Home		" 17 Away	
" 24	Newport County	... Away		" 24	Tottenham Hotspur	Home	
" 31	Gillingham	... Home		" 31	Brighton & Hove A.	Away	
Feb. 7	Exeter City	... Away		Feb. 7	Reading	... Home	
" 14	Brighton & Hove A.	Home		" 14	Coventry City	... Away	
" 21	Fulham	... Away		" 21	Leicester City	... Home	
" 28	Coventry City	... Home		" 28	Fulham	... Away	
Mar. 7	Walsall	... Away		Mar. 7	Charlton Athletic	... Home	
" 14	Queen's Park Rangers	Home		" 14	Watford	... Away	
" 21	Norwich City	... Away		" 21	Clapton Orient	... Home	
" 28	Thames	... Home		" 28	Portsmouth	... Away	
Apl. 3	(G.F.) Swindon Town	Home		Apl. 3	(G.F.)	... Away	
" 4	Clapton Orient	... Away		" 4	Arsenal	... Home	
" 6	(E.M.) Swindon Town	Away		" 6	(E.M.) Brentford	... Away	
" 7		" 7	Luton Town	... Home	
" 11	Notts County	... Home		" 11	Cardiff City	... Away	
" 18	Watford	... Away		" 18	Queen's Park Rangers	Home	
" 25	Bournemouth	... Home		" 25	Swansea Town	... Away	
May 2	Torquay United	... Home		May 2 Away	

SOUTHERN

FOOTBALL at SELHURST PARK

SEASON 1929-1930

CHEAP DAY TICKETS

In connection with ALL Football Matches to be played at
SELHURST PARK as under

From.	Departure Times.	Return Fares, 3rd Class		
		to Selhurst.	to Norwood J.	to T. Heath.
HONOR OAK PARK ...		s. d.	s. d.	s. d.
FOREST HILL	0 6	...
SYDENHAM	0 5	...
PENGE WEST	0 4	...
ANERLEY	0 3	...
TULSE HILL		...	0 7	0 7
STREATHAM HILL	0 7	...
WEST NORWOOD	0 5	...
GIPSY HILL	0 4	...
CRYSTAL PALACE (L.L.)		...	0 3	...
WANDSWORTH COMMON		0 8
BALHAM	0 7
STREATHAM	0 5
STREATHAM COMMON		0 4
NORBURY ...		0 3
COULSDON NORTH		0 9	0 10	...
PURLEY ...		0 7	0 8	...
PURLEY OAKS ...		0 5	0 6	...
SOUTH CROYDON ...		0 4	0 5	...
EAST CROYDON ...		0 2	0 3	...
BANSTEAD ...		1 1	1 2	...
BELMONT ...		0 11	0 11	...
EPSOM TOWN ...		1 3	1 3	...
EWELL EAST ...		1 1	1 2	...
CHEAM ...		0 11	0 11	...
SUTTON ...		0 9	0 10	...
CARSHALTON BEECHES		0 8	0 9	...
WALLINGTON ...		0 6	0 7	...
WADDON ...		0 4	0 5	...
WEST CROYDON ...		0 2	0 3	...

Tickets available for return by any Train on the day of issue.

In the event of a Match being postponed, these arrangements will NOT be carried out.

Waterloo Station, S.E.1.
August, 1929.

H. A. WALKER,
General Manager.

Why endure discomfort to get here?

When by Calling on

W. Wallis

Light Car Agent

AT

and Motor Cycle Specialist

129, High Street, Croydon

Telephone - - - Croydon 2672

You can be supplied with either
Motor Cycle or Light Car to suit
both your taste and cash balance



Contracting Agent

LIGHT CARS.

for all makes of

AUSTIN

MOTOR CYCLES

MORRIS etc.

Overhauls—Repairs—Exchanges

Deferred Terms a Pleasure **NOT** a Penance.

Those that
Appreciate
Quality,
Sound Value
and
Reliable
Service—



—Ring up
GUTTERIDGE'S
for
their
Outfitting
and
Shoes!

GUTTERIDGE'S

CLOTHIERS, HATTERS and SHOE FITTERS

Established over 40 Years.

92, BRIGSTOCK ROAD

(Near the Station)

THORNTON HEATH

Phone 1526

OR

832, LONDON ROAD

(Dovercourt Parade)

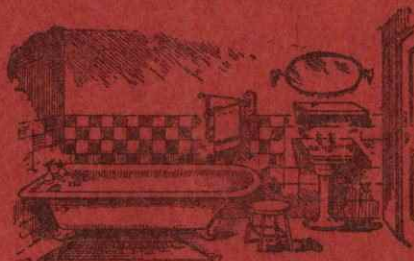
Near THORNTON HEATH POND

Phone 1635

H. A. FALLOWFIELD

Builder and Decorator

Central Heating,
Plumbing,
Electrical
Fittings,
etc.



Specialist in
Sanitation.

Fencing Work
a
Speciality.

23, CROXTED ROAD

WEST DULWICH, S.E. 21

Telephone

- - SYDENHAM 5485.