



Saturday, May 5th, 1928.

# TRUE - FORM



## FOOTWEAR

The Best Value  
IN THE TOWN

=====  
BUY FROM THE ACTUAL MAKERS

LOCAL BRANCH:

### 44, GEORGE STREET.

HEAD OFFICE AND FACTORIES, NORTHAMPTON.



## COMMENTS ON THE GAME AND PLAYERS

Charlton Athletic occupy a much better position in the League than the Town, but we hope to improve our position a little at their expense this afternoon. We were very unfortunate to lose at the Valley by the odd goal of seven, we thought, and we hope for a balance this afternoon. The Athletic have done pretty well just lately, whereas the defeats of the Town at Walsall and Plymouth have kept us in the lower half of the table. Still, the position is much better than we could have hoped for three months ago, and we can heartily congratulate the players on their splendid recovery.

The signatures of Bob Graham and Peter Spence have brought our total of re-engaged players to 14, and we think supporters will agree that we have the nucleus of two good sides for next season. We wish well those players who are not retained, and thank our supporters for the manner in which they stood by the club during the very gloomy periods we experienced this season.

### SCHOOLBOY GAMES.

On Wednesday evening two boys' matches are booked for the Town ground. In the first the younger boys of Beech Hill and Christ Church Schools play the final of the Luton Tradesmen's Association Cup, and this will be followed immediately by the match between the Schools' League champions (Dunstable-road) and the Rest of the League. The kick-off in the first game is at 5.15 p.m., and the admission to both is 6d. for adults, and 3d. for boys or girls.

### SENIOR CUP.

On Saturday next the final of the Beds. Senior Cup will be played on our ground, and the teams engaged are Waterlow's Athletic v. Kempston Rovers. This should be a good game, well worth watching, and a big crowd is expected.

## HALF-TIME SCORES.

CLUBS First named is home team	Scores	CLUBS First named is home team	Scores
<b>LIST No. 1.</b>		<b>LIST No. 2.</b>	
A Birmingham v. Derby County		A West Bromwich v. Port Vale	
B Blackburn v. Bury		B Brighton v. Swindon	
C Bolton v. Sheffield Utd.		C Exeter v. Merthyr	
D Everton v. Arsenal		D Northampton v. Coventry	
E Huddersfield v. Portsmouth		E Norwich v. Gillingham	
F Manchester Utd. v. Liverpool		F Southend v. Newport	
G Middlesbro' v. Sunderland		G Chelsea v. Barnsley	
H Newcastle Utd. v. West Ham U.		H Clapton v. Wolves	
K Sheffield Wed. v. Aston Villa		K Brentford v. Watford	
L Blackpool v. Fulham		L Palace v. Plymouth	
M Notts County v. Manchester C.		M Millwall v. Bristol Rovers	
N Stoke City v. Leeds Utd.		N Torquay v. Walsall	

**NOTE**—The letter in the Programme corresponds with the letter on the Board—thus A 0—1 means that the first-named Club has scored 0 and their opponents 1.

## NO DEPOSIT BUY YOUR FURNITURE LOCALLY

THE LUTON FURNISHING COMPANY have furnished more homes in Luton and District than any other firm, and since the introduction of our no-deposit system, the results have been simply amazing, and in each case satisfaction has been expressed at the manner in which the contract has been executed. They were the originators of the Hire Purchase System for Luton Residents, and their 30 years' high reputation is your guarantee. Once you approach the Luton Furnishing Company your furnishing problems cease. You buy on value alone, and the benefits given assure you absolute protection.

<b>£1 a month</b>	<b>buys</b>	<b>£40</b>	<b>worth of furniture</b>
<b>£1.10 „</b>	<b>buys</b>	<b>£60</b>	<b>worth of furniture</b>
<b>£2 „</b>	<b>buys</b>	<b>£80</b>	<b>worth of furniture</b>
<b>£2.10 „</b>	<b>buys</b>	<b>£100</b>	<b>worth of furniture</b>

*Luton Furnishing Co.*  
A HOUSEHOLD NAME FOR HOUSEHOLD FURNITURE  
22 BUTE ST & 2-4 WALLER ST LUTON

*Make it a habit to use Genoxide*

### The Perfect Peroxide of Hydrogen

For the Mouth, Teeth, and Throat, Genoxide prevents pyorrhoea. A powerful First Aid for Cuts, Wounds, Ulcers, Abrasions and Insect Bites, "Genoxide" sterilizes—and prevents blood poisoning.

At all Chemists in Three Sizes.

4 ozs. 1/- 8 ozs. 1/6 16 ozs. 2/6

## GENOXIDE Bath Powder

(Oxygenated and Perfumed).

Full of healthful benefits. Universally recommended for Rheumatism, Sciatica and Lumbago. Use "Genoxide" Bath Powder and leave your aches and pains in the bath. It is also the best means for removing corns.

8 ozs. Packet 1/- 16 ozs. Packet 1/9

**GENOXIDE Ltd. LUTON**

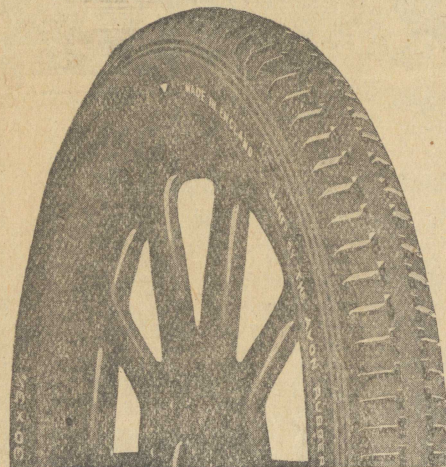


## LUTON TOWN F.C.—1st XI. FIXTURES.

Date.	Opponents.	Ground.	F	A	Date.	Opponents.	Ground.	F	A
1927.					1928.				
Aug. 27	Southend United	A.	0	1	Jan. 7	Brighton and Hove	A.	1	3
" 29	Norwich City	H.	1	3	" 14	Bolton F.A. Cup	A.	1	2
Sep. 3	Brighton & Hove A.	H.	2	5	" 21	Bournemouth	H.	3	3
" 5	Norwich City	A.	0	3	" 28	Brentford	A.	2	4
" 10	Bournemouth	A.	2	2	Feb. 4	Watford	H.	3	2
" 17	Brentford	H.	5	2	" 11	Millwall	H.	1	1
" 24	Watford	A.	0	1	" 18	Crystal Palace	A.	2	3
Oct. 1	Millwall	A.	2	3	" 25	Exeter City	H.	2	1
" 8	Crystal Palace	H.	6	1	Mar. 3	Newport County	A.	2	7
" 15	Exeter City	A.	2	3	" 10	Swindon Town	H.	2	1
" 22	Newport County	H.	1	1	" 17	Q.P. Rangers	A.	2	3
" 29	Swindon Town	A.	2	4	" 19	Northampton Town	H.	2	0
Nov. 5	Q.P. Rangers	H.	0	1	" 24	Coventry City	H.	3	1
" 12	Coventry City	A.	2	4	" 31	Gillingham	A.	4	0
" 19	Gillingham	H.	6	1	April 6	Torquay United	H.	5	0
" 30	Clapton F.A. Cup	H.	9	0	" 7	Plymouth Argyle	H.	1	1
Dec. 3	Merthyr Town	H.	5	1	" 9	Torquay United	A.	4	0
" 10	Norwich F.A. Cup	H.	6	0	" 14	Merthyr Town	A.	0	0
" 17	Bristol Rovers	H.	2	0	" 21	Walsall	H.	4	1
" 24	Charlton	A.	3	4	" 23	Walsall	A.	1	4
" 26	Northampton Town	A.	5	6	" 28	Bristol Rovers	A.	2	1
" 31	Southend United	H.	0	0	May 2	Plymouth Argyle	A.	0	4
					" 5	Charlton	H.		

## LUTON TOWN F.C.—2nd XI. FIXTURES.

1927.	Opponents	Grd.	F	A	1928.	Opponents	Grd.	F	A
Aug. 27	Southend United	H.	3	0	Jan. 7	Brighton & Hove	H.	0	2
Sep. 3	Brighton & Hove	A.	2	3	" 14	Cardiff City	H.	0	3
" 10	Fulham	H.	5	2	" 21				
" 17	Reading	H.	6	1	" 28	Brentford	H.	1	2
" 17	Brentford	A.	2	2	Feb. 4	Watford	A.	1	3
" 21	Reading	A.	1	3	" 9	Clapton Orient	A.	0	3
" 24	Watford	H.	8	2	" 11	Millwall	A.	2	4
Oct. 1	Millwall	H.	2	1	" 15	Clapton Orient	H.	3	2
" 8	Crystal Palace	A.	3	1	" 18	Crystal Palace	H.	4	0
" 15	Tottenham Hotspur	H.	4	1	" 25	Tottenham Hotspur	A.	0	2
" 20	Fulham	A.	4	1	Mar. 3	Leicester City	H.	4	1
" 22	Leicester City	A.	2	8	" 15	Chelsea	A.	1	4
" 29	West Ham United	H.	2	3	" 17	Queen's P. R.	H.	5	0
Nov. 2	Southampton	A.	0	2	" 24	Coventry City	A.	4	5
" 5	Queen's P. R.	A.	3	1	" 31	Arsenal	H.	1	2
" 12	Coventry City	H.	1	0	April 6	Swansea Town	A.	1	3
" 19	West Ham United	A.	2	7	" 9	Swansea Town	H.	2	1
Dec. 3	Portsmouth	A.	0	0	" 10	Southampton	H.	1	1
" 10	Cardiff City	A.	1	7	" 14	Chelsea	H.	2	1
" 17	Arsenal	A.	0	4	" 18	Southend United	A.	1	2
" 24	Charlton Athletic	H.	3	4	" 21				
					" 28	Portsmouth	H.	0	0
					May 5	Charlton Athletic	A.		



**REDUCED  
PRICES**

OF THE

**AVON "PIONEER"  
CORD TYRES**

30 x 3½ B. E. (Ford,  
Bean, &c.) ... 39/9  
27 x 4.40 W.B. (Morris,  
Clyno, &c.) ... 37/6  
29 x 4.40 W.B. or S.S.  
(Ford, &c.) ... 41/9

**DON'T DELAY—  
Get Your's To-day!**

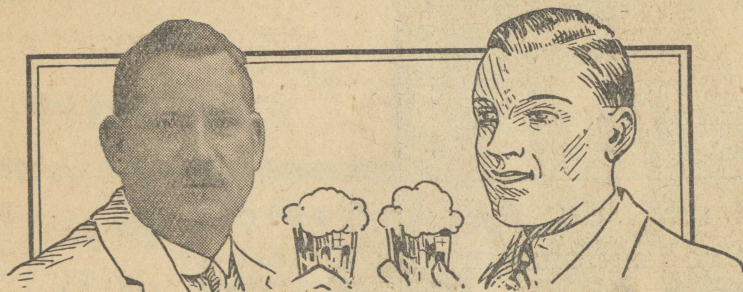
**The Luton Tyre Re-Rubbering Co.**

REAR OF FOSTER'S WINE STORES,

**9D, MARKET HILL - - LUTON**



**THE MATCH MAY NOT HAVE BEEN GOOD**



**BUT BE SURE OF A GOOD ONE AT THE**

PROPRIETOR  
**FRED MARTIN**

**Fox Hotel**

TELEPHONE  
**822**

**J.W.GREENS FINE ALES & STOUTS**



# J. W. GREEN'S

NOTED

**LUTON ALES and STOUT**  
are Brewed from the finest Malt & Hops

AT

**THE BREWERY, LUTON**

Prices on Application. Telephone: LUTON 1454

LUTON'S

LEADING



**DRAPERS & FURNISHERS**

SMOKE

**SUNRIPE**  
The 'Quality'  
**CIGARETTES**

10 for 6d.

20 for 1/-



After  
the  
Match!

**Don't Forget . .  
your Doggy Pal**

TAKE HIM SOME

**Entwistles  
'MORSELS'**

**The Unique Dog Biscuit**

Sold by Dealers everywhere  
in 1/- cartons or per lb. loose

**LUTON TOWN.**  
Colours—White Jerseys, Black Knickers

RIGHT

Abbott  
Graham  
Black  
Nunn  
Yardley  
Fulton  
Rennie  
Woods  
Dennis  
Richards  
Millar

Referee:  
MR. A. S. KING,  
Swindon.

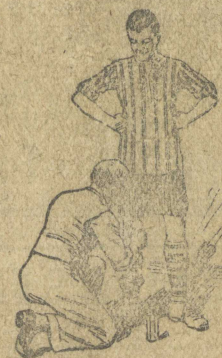
Linesmen:  
Messrs. E. J. CLARK, Gillingham  
and A. CURTIS, Fulham.

HEROD  
Horton  
Welsh  
Hird  
Lennox  
Rankin  
Sherlaw  
Codd  
Smith  
Preedy

LEFT

**CHARLTON ATHLETIC.**  
Colours—Red

**ELLIMAN'S**  
Embrocation  
PUTS LIFE IN LIMBS!



**PUT IT IN**

For SPRAINS, BRUISES and  
STRAINS STIFFNESS  
At all Chemists, 2/- & 4/- per bottle  
A Booklet on Massage and Hygiene of the  
Athlete, Free on Application, from  
**ELLIMAN, SONS & Co., Ltd., SLOUGH**

Further Remarkable  
Productions in the Latest  
Machines for the Hat Trade

Ask for particulars

**JANES BROS., Ltd., LUTON**

WE SUPPLY ON  
**EASY TERMS**

Cycles.  
Wireless Sets.  
Loud Speakers.

Furniture.  
Sewing Machines.  
Mangles, etc., etc.

FROM

**1/- down and 5/- per week**

Let us know your requirements

**BOULTER & CO., 48 CASTLE ST., LUTON**

Have your CAMERA FILMS  
DEVELOPED and PRINTED at

**COCKER'S**

The Photographic Chemist.

He will try and get a good negative from every snapshot

**169, DUNSTABLE RD., LUTON**  
Corner of Kenilworth Road.



# PICTUREDROME

TO-NIGHT

**RENEE ADOREE**

famous star of THE SHOW  
and BIG PARADE, in

## BACK TO GOD'S COUNTRY

MONDAY NEXT



**HOOT  
GIBSON**

in **PETER B.  
KYNE'S** latest  
whirlwind romance

## Galloping Fury

# WELLINGTON

CINEMA

TO-NIGHT

A Colossal Attraction.

## THE WINNING OF BARBARA WORTH

Featuring

**RONALD COLMAN**  
and **VILMA BANKY.**

MONDAY NEXT

## A DAUGHTER IN REVOLT

Featuring

**MABEL POULTON**

# ENTERTAINMENTS

PICTUREDROME.

"BACK TO GOD'S COUNTRY."

Rene Adoree, the famous star of the "Show," which created such a success at the Picturedrome, recently, features in a gripping searing story of a woman's courageous battle against terrible circumstances, seething passion and angry elements—a gorgeous, dramatic panorama of the frozen wastelands of the snow country. The picture is showing to night.

"GALLOPING FURY."

The world's greatest Western comedian, Hoot Gibson, will feature, on Monday next in "Galloping Fury," a gripping story of the West. Hoot endears himself by his delightful characterisation of the tidy toreador, a rodeo bull thrower, who never allows his face, hands or clothes to be soiled by contact with the dusty earth

WELLINGTON.

"THE WINNING OF BARBARA WORTH."

Ronald Coleman and Vilma Banky play the leading parts in to-night's feature, "The Winning of Barbara Worth," the story of a young man who assists his stepfather in an irrigation project. How he prevents his stepfather's villainy from ruining the girl's father and wins the girl, makes an ideal narrative.

"A DAUGHTER IN REVOLT."

The expansion of woman's rights and privileges is the theme of "A Daughter in Revolt," featuring Mabel Poulton, on Monday next. The girl desires to possess the new freedom of her sex, but is prevented by the Victorian ideas of her parents. Packed off to her aunt, even more of a martinet than her father, she induces her companion to impersonate her and runs off with a strange but handsome young man.

# IN LUTON

GORDON STREET.

"DARING DEEDS."

Billy Sullivan is featured to-night in "Daring Deeds." Billy, booted none too gently from the parental home by a sorely tried father, sets out, accompanied by his faithful mechanic, in search of fame and fortune. He meets many weird adventures, and proves himself an airman of great ability, with an absolute disregard for peril.

"MISTER MUSTARD'S MILLIONS."

"Mister Mustard's Millions" makes natural and riotous entertainment. Koline is a great actor of phenomenal versatility and quite unrivalled in the humanity of his characterisation." The picture is showing on Monday next.

EMPIRE.

"MAN POWER."

There are thrills in plenty from the time Richard Dix arrives in Peaceful Valley on a freight train, in "Man Power," the big picture at the Empire to-night. One of the most thrilling rides seen on the screen is when Dix saves the Town by driving an auto-tractor, loaded with sandbags, into the breach caused by a crumbling dam. Mary Brian, who played opposite Dix in "Knock-out Reilly," again proves a charming heroine.

"THE TEMPLE OF SHADOWS"

For the whole of next week, Mr. George Jackson, has booked "The Temple of Shadows," starring Queenie Thomas and Bernard Goetzke with a powerful international cast. The film tells the story of a mysterious Eastern city beyond the snow-capped Himalayas, ruled by a still more mysterious prince, who proves to be . . . but that would be telling! One of the most striking features are the settings, which are colossal and bizarre. The interior of the temple, with its pagan god, is something new in screen settings.

# GORDON STREET

County Electric Pavilion  
THE HOME OF IDEAL COMEDIES

TO-NIGHT

**Billy Sullivan**  
in

## DARING DEEDS

The earth and air are all one to  
Billy Sullivan—See him and  
marvel at his courage.

MONDAY NEXT

## Mister Mustard's Millions

Featuring

**KOLINE**, the great comedian

# EMPIRE CINEMA

BURY PARK ROAD

## ALL NEXT WEEK

Matinee, WEDNESDAY at 2.30

SENSATIONAL ATTRACTION!

## The Temple of Shadows

with

**Queenie Thomas** and  
**Bernard Goetzke.**



# THE LEAGUE: DIVISION III. (South).

# LONDON COMBINATION.

		Goals					
	P	W	L	D	F	A	P
Millwall Athletic .....	41	29	7	5	126	50	63
Northampton Town.....	41	22	10	9	100	63	53
Plymouth Argyle .....	41	22	12	7	83	54	51
Crystal Palace .....	41	18	11	12	79	70	48
Swindon Town .....	41	19	13	9	88	65	47
Brighton & Hove .....	41	18	13	10	77	67	46
Newport County .....	41	19	13	9	80	79	45
Southend United .....	41	19	16	6	75	63	44
Exeter City .....	41	16	13	12	68	60	44
Queen's Pk. R. ....	42	17	16	9	72	71	43
Charlton Athletic .....	41	15	13	13	59	68	43
Brentford .....	41	16	18	7	75	73	39
Bournemouth .....	42	13	17	12	72	79	38
LUTON TOWN .....	41	15	19	7	92	86	37
Watford .....	41	14	18	9	67	77	37
Gillingham .....	41	13	18	10	62	81	36
Norwich City .....	41	10	16	15	66	70	35
Walsall .....	41	12	21	8	74	100	32
Bristol Rovers .....	41	14	23	4	67	92	32
Coventry City .....	41	11	21	9	66	94	31
Merthyr Town .....	41	9	19	13	53	89	31
Torquay United .....	41	8	20	13	52	102	29

	Goals						
	P	W	L	D	F	A	P
Arsenal .....	41	26	8	7	102	45	59
Tottenham H. ....	41	27	9	5	120	61	59
West Ham United ..	41	25	12	4	119	62	54
Brighton & Hove A...	41	22	9	10	97	68	54
Chelsea .....	42	22	12	8	102	72	52
Portsmouth .....	42	20	13	9	88	58	49
Southampton .....	41	21	14	6	91	72	48
Reading .....	41	18	14	9	76	74	45
Brentford .....	41	17	15	9	93	68	43
Leicester City .....	41	18	16	7	86	69	43
Cardiff City .....	42	17	17	8	83	76	42
Clapton Orient .....	42	16	17	9	78	88	41
Southend United .....	42	16	20	6	73	80	38
LUTON TOWN .....	41	16	21	4	87	94	36
Swansea Town .....	41	14	19	8	55	75	36
Millwall .....	41	14	20	7	77	89	35
Fulham .....	42	15	23	4	75	102	34
Charlton Athletic .....	41	13	22	6	83	114	32
Queen's Pk. R. ....	41	13	24	4	83	118	30
Coventry City .....	42	11	22	9	73	114	31
Crystal Palace .....	42	7	24	11	63	133	25
Watford .....	41	10	27	4	66	148	24

# L-N-E-R

## FOOTBALL MATCHES

### CHEAP TICKETS to LUTON

FROM

HITCHIN	-	A 2/9	B 3/3	HATFIELD	-	1/4
STEYENAGE	-	A 2/5	B 2/10	WELWYN GARDEN CITY	1/4	
KNEBWORTH	-	A 1/11	B 2/5	AYOT	-	1/4
WELWYN NORTH	A 1/6	B 2/-	WHEATHAMPSTEAD	1/-		
HERTFORD NORTH	-	2/2	HARPENDEN	-	-/9	
HERTINGFORDBURY	-	2/-	LUTON HOO	-	-/5	
COLE GREEN	-	1/10	DUNSTABLE (Town.)	-	-/6	

A Via Welwyn Garden City. B Via Hatfield

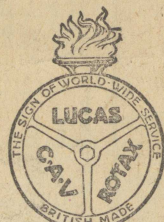
By any train between 9.0 a.m. and 3 p.m.

CHEAP FIRST CLASS TICKETS WILL ALSO BE ISSUED.

In connection with Evening Matches the outward halves of tickets will be available between the hours of 9 a.m. and 5 p.m.

Return same day by any train after 3-0 p.m.

**LUCAS**  
**C. A. V.**  
**ROTAX**



Large  
Stocks  
held.

**Official Battery**  
**Agents for Luton**  
**.. and District ..**

The  
Trade  
Supplied.

:: :: All makes of Accumulators charged and repaired :: ::  
We carry an extensive stock of Electrical and Wireless Accessories

**BOROUGH ENGINEERING WORKS, Ltd.**  
**45, CASTLE STREET,**  
**LUTON**  
Phone 646

**Charnley**  
and Sons

Qualified  
Ophthalmic Opticians

SIGHT-TESTING SPECTACLES  
EYE-GLASSES REPAIRS

**15, Wellington Street,**  
**LUTON**

## THE HOUSE FOR RINGS.



**Diamond Rings.**  
Beautiful stones  
securely set in 18 ct.  
gold and platinum.

£1 10 to £50



**Signet Rings.**  
9 ct. and 18 ct. gold,  
in a vast range of  
the latest designs.

3/6 to £4



**Wedding Rings.**  
9 ct. and 22 ct. gold,  
15 sizes in 20 prices,  
including latest  
"Court" Shapes.

4/6 to £4 10

**F. HINDS, Ltd.**

*The London Jewellers,*  
**5, Park Square, LUTON.**  
Branches in London and Provinces.  
Established 1856.



---

# The *BEST* Bicycles on the *BEST* Terms.



That's what you expect. Be sure you get it. There are "cheaper" mounts—yes, but not one of them with the real pedigree and lifelong service you get with the World famous

**NEW-HUDSON**

A Bicycle guaranteed 15 years,  
but built to last many more

MODELS FROM (Cash)

**£5 : 19 : 6**

Easiest of Easy Payments

**NO DEPOSIT**

SEE OUR RANGE OF  
**NEW HUDSON MOTOR CYCLES**  
Special show this week

## H. G. PARTRIDGE & Co.

NEW HUDSON DEPOT

10/12, CHAPEL STREET, LUTON