

1927-28
OFFICIAL

No
37

WITCHAMPTON
LUTON TOWN F.C.

Monday, March 19th, 1928.

TRUE - FORM



FOOTWEAR

The Best Value
IN THE TOWN

BUY FROM THE ACTUAL MAKERS

LOCAL BRANCH;

44, GEORGE STREET.

HEAD OFFICE AND FACTORIES, NORTHAMPTON.

COMMENTS ON THE GAME AND PLAYERS

This game is the postponed match due to the failure of Northampton to get to Luton on December 27th, owing to the heavy fall of snow. We hope for a big crowd, but, of course, we do not anticipate anything like the number of spectators that gathered on that day and were disappointed. We believe that we had the biggest crowd since the visit of Preston in the Cup Competition some years ago, and probably a record for a League match at Luton. It was the extraordinary score of the day before at Northampton that did it, for after leading by 5-1 at half-time, we lost by 6-5.

There have been changes in both teams since then, but while

the "Cobblers" have managed to keep so near to the top, we have not been able to get away from the bottom. If our team can manage to get the points to-night we shall feel happier, but the "Cobblers" have a splendid record, and one upon which we can thoroughly congratulate them. They have lost only one League game since Christmas, and though Millwall are stronger favourites for promotion, the "Cobblers" are close on their heels, and may yet capture the prize. Though we should greatly miss the matches, we would be the first to congratulate them on achieving promotion.

On Saturday they were at Walsall and managed to share the

Comments on the Game and Players—continued.

spoils, while we were at Shepherd's Bush, fighting, as usual, against eleven opponents and misfortune.

At Shepherd's Bush not only did we suffer defeat unluckily, but several players were placed on the injured list.

Millar sustained a severe strain just above the right hip, Ramage a damaged ankle, and Pointon got a blow on the back of the leg.

There are thus six positional changes involved.

Graham is restored to right back, and Black to right half. Fulton comes in at centre-half, and Dennis did well enough at left half following Millar's injury

on Saturday, to justify his retention in that position to-night.

The two extreme wing positions are also changed, and so we get a complete alteration in the middle line, as well as right back and two outside forward positions.

SCHOOLBOYS' MATCH.

On Wednesday night, on our ground, there should be a large attendance to see the duel between Dunstable Road Schoolboys and Watford Field Schoolboys, in the final of the Wix Trophy Competition. The kick-off is fixed for 4 p.m. It is hoped that the Mayors of Luton and Watford and Mr. E. N. Wix, the donor of the trophy, will be present.

Buy Your Furniture Locally

FACTS

For 30 years we have given the public reliable goods at lowest prices. Our reputation for fair dealing is undeniable, our stock equals any shown elsewhere, we are actual manufacturers, therefore save you 5/- in each £. Every advantage offered by London firms is given you, so why not deal with us? Thousands of satisfied customers is your safest guarantee.

Our Simple System

First choose the Furniture you require, suggest terms suiting your individual income, and no reasonable proposition will be refused. Goods are then positively delivered in 24 hours. No references whatever are required, and our Manager's advice, experience, and personal attention is always at your service.

*Payments Suspended during
Sickness, Unemployment
or Adversity*

Luton Furnishing Co
A HOUSEHOLD NAME FOR HOUSEHOLD FURNITURE
22 BUTE ST & 2-4 WALLER ST LUTON

THE LARGEST CREDIT FURNISHERS

*Make it
a habit to use Genoxide*

The Perfect Peroxide of Hydrogen

For the Mouth, Teeth, and Throat, Genoxide prevents pyorrhoea. A powerful First Aid for Cuts, Wounds, Ulcers, Abrasions and Insect Bites, "Genoxide" sterilizes—and prevents blood poisoning.

At all Chemists in Three Sizes.

4 ozs. 1/- 8 ozs. 1/6 16 ozs. 2/6

GENOXIDE Bath Powder

(Oxygenated and Perfumed).

Full of healthful benefits. Universally recommended for Rheumatism, Sciatica and Lumbago. Use "Genoxide" Bath Powder and leave your aches and pains in the bath. It is also the best means for removing corns.

8 ozs. Packet 1/- 16 ozs. Packet 1/9

GENOXIDE Ltd. LUTON

LUTON TOWN F.C.—1st XI. FIXTURES.

Date.	Opponents.	Ground.	F	A	Date.	Opponents.	Ground.	F	A
1927.					1928.				
Aug. 27	Southend United	A.	0	1	Jan. 7	Brighton and Hove	A.	1	3
" 29	Norwich City	H.	1	3	" 14	Bolton F.A. Cup	A.	1	2
Sept. 3	Brighton & Hove A.	H.	2	5	" 21	Bournemouth	H.	3	3
" 5	Norwich City	A.	0	3	" 28	Brentford	A.	2	4
" 10	Bournemouth	A.	2	2	Feb. 4	Watford	H.	3	2
" 17	Brentford	H.	5	2	" 11	Millwall	H.	1	1
" 24	Watford	A.	0	1	" 18	Crystal Palace	A.	2	3
Oct. 1	Millwall	A.	2	3	" 25	Exeter City	H.	2	1
" 8	Crystal Palace	H.	6	1	Mar. 3	Newport County	A.	2	7
" 15	Exeter City	A.	2	3	" 10	Swindon Town	H.	2	1
" 22	Newport County	H.	1	1	" 17	Q.P. Rangers	A.	2	3
" 29	Swindon Town	A.	2	4	" 19	Northampton Town	H.		
Nov. 5	Q.P. Rangers	H.	0	1	" 24	Coventry City	H.		
" 12	Coventry City	A.	2	4	" 31	Gillingham	A.		
" 19	Gillingham	H.	6	1	April 6	Torquay United	H.		
" 30	Clapton F.A. Cup	H.	9	0	" 7	Plymouth Argyle	H.		
Dec. 3	Merthyr Town	H.	5	1	" 9	Torquay United	A.		
" 10	Norwich F.A. Cup	H.	6	0	" 14	Merthyr Town	A.		
" 17	Bristol Rovers	H.	2	0	" 21	Walsall	H.		
" 24	Charlton	A.	3	4	" 23	Walsall	A.		
" 26	Northampton Town	A.	5	6	" 28	Bristol Rovers	A.		
" 31	Southend United	H.	0	0	May 2	Plymouth Argyle	A.		
					" 5	Charlton	H.		

LUTON TOWN F.C.—2nd XI. FIXTURES.

1927.	Opponents	Grd.	F	A	1928.	Opponents	Grd.	F	A
Aug. 27	Southend United	H.	3	0	Jan. 7	Brighton & Hove	H.	0	2
Sept. 3	Brighton & Hove	A.	2	3	" 14	Cardiff City	H.	0	3
" 10	Fulham	H.	5	2	" 21
" 14	Reading	H.	6	1	" 28	Brentford	H.	1	2
" 17	Brentford	A.	2	2	Feb. 4	Watford	A.	1	3
" 21	Reading	A.	1	3	" 9	Clapton Orient	A.	0	3
" 24	Watford	H.	8	2	" 11	Millwall	A.	2	4
Oct. 1	Millwall	H.	2	1	" 15	Clapton Orient	H.	3	2
" 8	Crystal Palace	A.	3	1	" 18	Crystal Palace	H.	4	0
" 15	Tottenham Hotspur	H.	4	1	" 25	Tottenham Hotspur	A.	0	2
" 20	Fulham	A.	4	1	Mar. 3	Leicester City	H.	4	1
" 22	Leicester City	A.	2	8	" 15	Chelsea	A.	1	4
" 29	West Ham United	H.	2	3	" 17	Queen's P. R.	H.	5	0
Nov. 2	Southampton	A.	0	2	" 24	Coventry City	A.		
" 5	Queen's P. R.	A.	3	1	" 31	Arsenal	H.		
" 12	Coventry City	H.	1	0	April 6	Swansea Town	A.		
" 19	West Ham United	A.	2	7	" 9	Swansea Town	H.		
Dec. 3	Portsmouth	A.	0	0	" 10	Southampton	H.		
" 10	Cardiff City	A.	1	7	" 14	Chelsea	H.		
" 17	Arsenal	A.	0	4	" 18	Southend United	A.		
" 24	Charlton Athletic	H.	3	4	" 21
					" 28	Portsmouth	H.		
					May 5	Charlton Athletic	A.		



REDUCED PRICES OF THE AVON "PIONEER" CORD TYRES

30 x 3½ B. E. (Ford, Bean, &c.)	39/9
27 x 4.40 W.B. (Morris, Clyno, &c.)	37/6
29 x 4.40 W.B. or S.S. (Ford, &c.)	41/9

**DON'T DELAY—
Get Your's To-day!**

The Luton Tyre Re-Rubbering Co.

REAR OF FOSTER'S WINE STORES,
9D, MARKET HILL - - LUTON



THE MATCH MAY NOT HAVE BEEN GOOD



BUT BE SURE OF A GOOD ONE AT THE

PROPRIETOR
FRED MARTIN

Fox Hotel

TELEPHONE
822

J.W.GREENS FINE ALES & STOUTS

J. W. GREEN'S

NOTED

LUTON ALES and STOUT
are Brewed from the finest Malt & Hops

AT

THE BREWERY, LUTON

Prices on Application. Telephone: LUTON 1454

LUTON'S

LEADING



DRAPERS & FURNISHERS

SMOKE

SUNRIPE
The 'Quality'
CIGARETTES

10 for 6d.

20 for 1/-



After
the
Match!

**Don't Forget . .
your Doggy Pal**

TAKE HIM SOME

**Entwistles
"MORSELS"**

The Unique Dog Biscuit

Sold by Dealers everywhere
in 1/- cartons or per lb. loose

LUTON TOWN.
Colours—White Jerseys, Black Knickers

RIGHT

1 Abbott

2 Graham

3 Richards

4 Black

5 Fulton

6 Dennis

7 Banks

8 Yardley

9 Rennie

10 Woods

11 Nunn

Referee:
MR. J. H. COLLINS,
Birmingham.

LEFT

12 Wells

13 Shaw

14 Bowen

15 Smith

16 Fraser

17 Odell

18 Maloney

19 Allon

20 Brett

21 Watson

22 Hammond

RIGHT

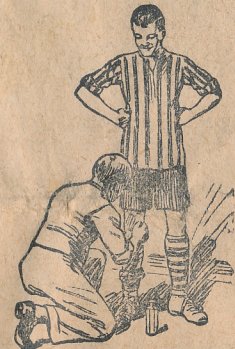
NORTHAMPTON TOWN.
Colours—Claret and White.

TAILORS
LACOYS
OF LUTON
OUTFITTERS

Linesmen:
Messrs. J. D. PATRICK, Southend
and S. F. ROUS, Hemel Hempst'd

ELLIMAN'S

**Embrocation
PUTS LIFE IN LIMBS!**



RUB IT IN

For **SPRAINS** and **BRUISES** and
STRAINS and **STIFFNESS**

At all Chemists, 2/- & 4/- per bottle

A Booklet on Massage and Hygiene of the
Athlete, Free on Application, from

ELLIMAN, SONS & Co., Ltd., SLOUGH

Repairs to Sewing Machines

Executed at the shortest
notice, of **ALL MODELS**.
The largest stock of spares
:: held in the District. ::

JANES BROS., Ltd., LUTON

WE SUPPLY ON

EASY TERMS

Cycles. Furniture.
Wireless Sets. Sewing Machines.
Loud Speakers. Mangles, etc., etc.

FROM

1/- down and 5/- per week

Let us know your requirements

BOULTER & CO., 48 CASTLE ST.,
LUTON

Have your **CAMERA FILMS**
DEVELOPED and PRINTED at

COCKER'S

The Photographic Chemist.

He will try and get a good negative from every snapshot

169, DUNSTABLE RD., Corner of
Kenilworth Road, **LUTON**

PICTUREDROME

PARK ST

TO-NIGHT

LOUISE FAZENDA

With **HELEN COSTELLO** in

FINGER PRINTS

Warner Bros.' Super Mystery Thriller

WELLINGTON

CINEMA

TO-NIGHT

The Silent Lover

Featuring

MILTON SILLS, VIOLA DANA
and **CHARLIE MURRAY.**

ENTERTAINMENTS

PICTUREDROME.

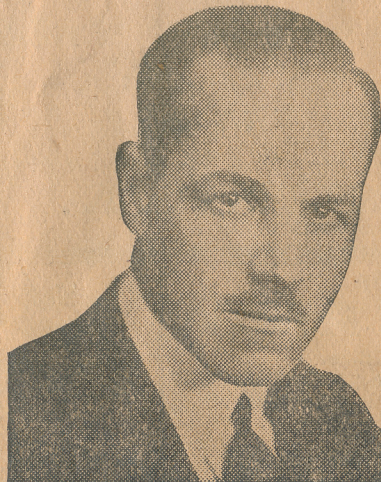
"FINGER PRINTS."

Louise Fazenda and Helen Costella are featuring to-night in "Finger Prints," a side-splitting and hair-raising mystery and thrilling drama, written by a master of thrill fiction. The panorama will give selections at all performances.

WELLINGTON.

"THE SILENT LOVER."

Milton Sills features to-night in a new type of role in "The Silent Lover," a tale of the French Foreign Legion. The young and successful diplomat by his own folly is forced to seek forgetfulness in that strange company, the Legion. His loves, his redemption, his restoration to his high place and happiness, affords a great opportunity for the finished acting of the star. The plot is of dynamic action, with love and romance, and touches of wistful comedy cleverly intermingled.



Jack Holt.

IN LUTON

GORDON STREET.

"DANCING MAD."

To-night, "Dancing Mad," featuring Maria Corda, will be shown. It emphasises the ways of society when a dance comes before anything else. Such was the case with Estelle Benoit, who, unable to find time to arrange details of her forthcoming marriage, referred her future husband to her mother, who promptly refused to take over what was the duty of the bride. How she nearly lost him makes an entertaining story.

EMPIRE.

"BOHEMIAN LOVE."

Adapted from the French novel and play, "La Femme Nue," "Bohemian Love" is the attraction for this week. It is a passionate story of Montmartre, where a beautiful artist's model poses in the nude for a painting which brings fame and fortune to her artist husband, who, forgetting his love and gratitude, loses his heart to another woman, whose treachery and deceit drive him back to his former love, Louise Lagrange and Ivan Petrovitch head a talented cast.



Mary Gwynne.

GORDON STREET

County Electric Pavilion
THE HOME OF IDEAL COMEDIES

TO-NIGHT

MARIA CORDA

in

DANCING MAD

A drama of a wife whose life was
bound in dancing.

EMPIRE CINEMA

BURY PARK ROAD

ALL THIS WEEK

Matinee, **WEDNESDAY** at 2.30 p.m.

Terrific Attraction

BOHEMIAN LOVE

Starring

IVAN PETROVITCH.

LAST SATURDAY'S GOAL SCORERS.



YARDLEY



DENNIS

L-N-E-R

FOOTBALL MATCHES

CHEAP TICKETS to LUTON

FROM

HITCHIN	-	-	A 2/9	B 3/3	HATFIELD	-	-	1/4
STEVENAGE	-	-	A 2/5	B 2/10	WELWYN GARDEN CITY	-	-	1/4
KNEBWORTH	-	-	A 1/11	B 2/5	AYOT	-	-	1/4
WELWYN NORTH	-	-	A 1/6	B 2/-	WHEATHAMPSTEAD	-	-	1/-
HERTFORD NORTH	-	-	-	2/2	HARPENDEN	-	-	-/9
HERTINGFORDBURY	-	-	-	2/-	LUTON HOO	-	-	-/5
COLE GREEN	-	-	-	1/10	DUNSTABLE (Town.)	-	-	-/6

A Via Welwyn Garden City. B Via Hatfield

By any train between 9.0 a.m. and 3 p.m.

CHEAP FIRST CLASS TICKETS WILL ALSO BE ISSUED.

In connection with Evening Matches the outward halves of tickets will be available between the hours of 9 a.m. and 5 p.m.

Return same day by any train after 3-0 p.m.

Cheap tickets will also be issued on Easter Monday.

LUCAS

C. A. V.

ROTAX

**BATTERY
SERVICE**

Official Battery

Agents for Luton

.. and District ..

Large
Stocks
held.

The
Trade
Supplied.

:: :: All makes of Accumulators charged and repaired :: ::
We carry an extensive stock of Electrical and Wireless Accessories

BOROUGH ENGINEERING WORKS, Ltd.

45, CASTLE STREET,
LUTON

Phone 646

Charnley
and Sons

Qualified
Ophthalmic Opticians

SIGHT-TESTING SPECTACLES

EYE-GLASSES REPAIRS

15, Wellington Street,

LUTON

THE HOUSE FOR RINGS.



Diamond Rings.

Beautiful stones
securely set in 18 ct.
gold and platinum.

£1 10 to £50



Signet Rings.

9 ct. and 18 ct. gold,
in a vast range of
the latest designs.

3/6 to £4



Wedding Rings.

9 ct. and 22 ct. gold,
15 sizes in 20 prices,
including latest
"Court" Shapes.

4/6 to £4 10

F. HINDS, Ltd.

The London Jewellers,

5, Park Square, LUTON.

Branches in London and Provinces.

Established 1856.



GOAL!

and your Goal for
all Sports Goods is

NEW HUDSON Sports Depot

Where Satisfaction is Assured

Footballs
Jerseys
Knickers
Shinguards

Every requisite
at lowest prices

Send for our
Winter Sports
List to-day. It
is Free



Hose
Boots
Goal Nets
Kit Bags

Special Terms
to Clubs

IMPROVED "T"
BALL 22/6
as supplied by
us to Luton
Town F.C.

H. G. PARTRIDGE & Co.

10-12 CHAPEL STREET, LUTON.

PHONE 234.