



No
29

1927-28
OFFICIAL

MATCHCARD
LUTON TOWN.F.C

Saturday, February 4th, 1928.

TRUE - FORM



REG. TRADE MARK

FOOTWEAR

The Best Value
IN THE TOWN

BUY FROM THE ACTUAL MAKERS

LOCAL BRANCH:

44, GEORGE STREET.

HEAD OFFICE AND FACTORIES, NORTHAMPTON.

COMMENTS ON THE GAME AND PLAYERS

We are happy to welcome our old friends from Watford again. Our followers may have expected some further change in the team to-day, and it is due to them to say that there have been negotiations during the week, but at the moment they have not come to fruition. However, we feel sure that interest in the first appearance at home of John Ramage will be of ample interest, and if he shows up as well as at Brentford we know they will be satisfied.

It is unfortunate that we have lost Reid at such a critical time, but if Rennie finds his shooting boots we think the little centre-forward will not be missed.

Our guests are in little better position than we, and if we manage to get through to-day with a brace of points our hopes will rise a good deal, though the programme ahead is a stiff one. They have their strongest team out, and it will

be a grim struggle. There are several players who did not play against us at Watford, when we were unfortunate to lose.

It is a remarkable record we have with Watford since the War. In all 17 games have been played, and we have won only two—by 1—0 in 1920-21, and by 5—0 in 1925-26. The following figures are eloquent as showing that our turn is overdue:—

	P	W	L	D	F	A	P
Home	8	2	3	3	10	9	7
Away	9	0	7	2	7	18	2
	17	2	10	5	17	27	9

Next Saturday we have the League leaders at Luton. At New Cross we were beaten by 3—2 after leading by 2—0. We hope to do better than that at Luton, and to emulate the feat of Bournemouth, who defeated the "Lions" by 5—0.

HALF-TIMES SCORES.

LIST No. 1.

CLUBS	Scores	CLUBS	Scores
First named is home team		First named is home team	
A Ireland v. Wales		G Liverpool v. West Ham Utd.	
B Arsenal v. Derby County		H Middlesborough v. Bolton W.	
C Burnley v. Sunderland		K Newcastle v. Cardiff City	
D Bury v. Aston Villa		L Sheffield W. v. Sheffield U.	
E Huddersfield v. Everton		M Orient v. Barnsley	
F Leicester v. Portsmouth		N Fulham v. Wolves	

NOTE—The letter in the Programme corresponds with the letter on the Board—thus **A** 0—1 means that the first-named Club has scored 0 and their opponents 1.

Buy Your Furniture Locally

FACTS

For 30 years we have given the public reliable goods at lowest prices. Our reputation for fair dealing is undeniable, our stock equals any shown elsewhere, we are actual manufacturers, therefore save you 5/- in each £. Every advantage offered by London firms is given you, so why not deal with us? Thousands of satisfied customers is your safest guarantee.

Our Simple System

First choose the Furniture you require, suggest terms suiting your individual income, and no reasonable proposition will be refused. Goods are then positively delivered in 24 hours. No references whatever are required, and our Manager's advice, experience, and personal attention is always at your service.

*Payments Suspended during
Sickness, Unemployment
or Adversity*

Luton Furnishing Co
A HOUSEHOLD NAME FOR HOUSEHOLD FURNITURE
22 BUTE ST & 2-4 WALLER ST LUTON

THE LARGEST CREDIT FURNISHERS

*Make it
a habit to use Genoxide*

REGD

The Perfect Peroxide of Hydrogen

For the Mouth, Teeth, and Throat, Genoxide prevents pyorrhoea. A powerful First Aid for Cuts, Wounds, Ulcers, Abrasions and Insect Bites, "Genoxide" sterilizes and prevents blood poisoning.

At all Chemists in Three Sizes.

4 ozs. 1/-

8 ozs. 1/6

16 ozs. 2/6

GENOXIDE Bath Powder

(Oxygenated and Perfumed).

Full of healthful benefits. Universally recommended for Rheumatism, Sciatica and Lumbago. Use "Genoxide" Bath Powder and leave your aches and pains in the bath. It is also the best means for removing corns.

8 ozs. Packet 1/-

16 ozs. Packet 1/9

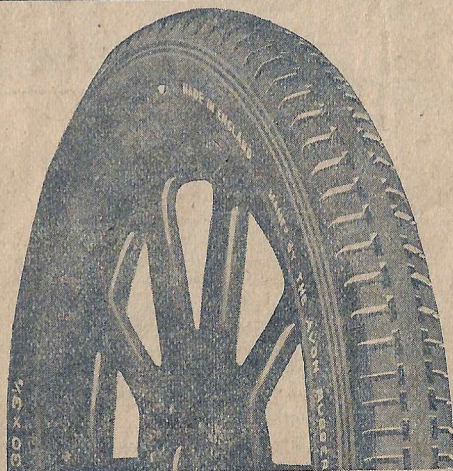
GENOXIDE Ltd. LUTON

LUTON TOWN F.C.—1st XI. FIXTURES.

Date.	Opponents.	Ground.	F	A	Date.	Opponents.	Ground.	F	A
1927.					1928.				
Aug. 27	Southend UnitedA..	0	1	Jan. 7	Brighton and HoveA..	1	3
" 29	Norwich CityH..	1	3	" 14	Bolton F.A. CupA..	1	2
Sept. 3	Brighton & Hove A.H..	2	5	" 21	BournemouthH..	3	3
" 5	Norwich CityA..	0	3	" 28	BrentfordA..	2	4
" 10	BournemouthA..	2	2	Feb. 4	WatfordH..		
" 17	BrentfordH..	5	2	" 11	MillwallH..		
" 24	WatfordA..	0	1	" 18	Crystal PalaceA..		
Oct. 1	MillwallA..	2	3	" 25	Exeter CityH..		
" 8	Crystal PalaceH..	6	1	Mar. 3	Newport CountyA..		
" 15	Exeter CityA..	2	3	" 10	Swindon TownH..		
" 22	Newport CountyH..	1	1	" 17	Q.P. RangersA..		
" 29	Swindon TownA..	2	4	" 19	Northampton TownH..		
Nov. 5	Q.P. RangersH..	0	1	" 24	Coventry CityH..		
" 12	Coventry CityA..	2	4	" 31	GillinghamA..		
" 19	GillinghamH..	6	1	April 6	Torquay UnitedH..		
" 30	Clapton F.A. CupH..	9	0	" 7	Plymouth ArgyleH..		
Dec. 3	Merthyr TownH..	5	1	" 9	Torquay UnitedA..		
" 10	Norwich F.A. CupH..	6	0	" 14	Merthyr TownA..		
" 17	Bristol RoversH..	2	0	" 21	WalsallH..		
" 24	CharltonA..	3	4	" 23	WalsallA..		
" 26	Northampton TownA..	5	6	" 28	Bristol RoversA..		
" 31	Southend UnitedH..	0	0	May 2	Plymouth ArgyleA..		
					" 5	CharltonH..		

LUTON TOWN F.C.—2nd XI. FIXTURES.

1927.	Opponents	Grd.	F	A	1928.	Opponents	Grd.	F	A
Aug. 27	Southend UnitedH..	3	0	Jan. 7	Brighton & HoveH..	0	2
Sept. 3	Brighton & HoveA..	2	3	" 14	Cardiff CityH..	0	3
" 10	FulhamH..	5	2	" 21		
" 14	ReadingH..	6	1	" 28	BrentfordH..	1	2
" 17	BrentfordA..	2	2	Feb. 4	WatfordA..		
" 21	ReadingA..	1	3	" 9	Clapton OrientA..		
" 24	WatfordH..	8	2	" 11	MillwallA..		
Oct. 1	MillwallH..	2	1	" 15	Clapton OrientH..		
" 8	Crystal PalaceA..	3	1	" 18	Crystal PalaceH..		
" 15	Tottenham HotspurH..	4	1	" 25	Tottenham HotspurA..		
" 20	FulhamA..	4	1	Mar. 3	Leicester CityH..		
" 22	Leicester CityA..	2	8	" 15	ChelseaA..		
" 29	West Ham UnitedH..	2	3	" 17	Queen's P. R.H..		
Nov. 2	SouthamptonA..	0	2	" 24	Coventry CityA..		
" 5	Queen's P. R.A..	3	1	" 31	ArsenalH..		
" 12	Coventry CityH..	1	0	April 6	Swansea TownA..		
" 19	West Ham UnitedA..	2	7	" 9	Swansea TownH..		
Dec. 3	PortsmouthA..	0	0	" 10	SouthamptonH..		
" 10	Cardiff CityA..	1	7	" 14	ChelseaH..		
" 17	ArsenalA..	0	4	" 18	Southend UnitedA..		
" 24	Charlton AthleticH..	3	4	" 21		
					" 28	PortsmouthH..		
					May 5	Charlton AthleticA..		



REDUCED PRICES OF THE AVON "PIONEER" CORD TYRES

30 x 3½ B. E. (Ford, Bean, &c.)	39/9
27 x 4.40 W.B. (Morris, Clyno, &c.)	37/6
29 x 4.40 W.B. or S.S. (Ford, &c.)	41/9

DON'T DELAY—
Get Your's To-day!

The Luton Tyre Re-Rubbering Co.

REAR OF FOSTER'S WINE STORES,

9D, MARKET HILL - - LUTON



The Fox Hotel

DUNSTABLE RD LUTON
CLOSE TO FOOTBALL GROUND
PHONE 822

**J.W.GREEN'S
FINE
ALES
AND
STOUTS**



FRED MARTIN WILL BE PLEASED TO MEET OLD & NEW FRIENDS

J. W. GREEN'S

NOTED

LUTON ALES and STOUT
are Brewed from the finest Malt & Hops

AT

THE BREWERY, LUTON

Prices on Application.

Telephone: LUTON 1454

LUTON'S

LEADING



DRAPERS & FURNISHERS

SMOKE

SUNRIPE
The 'Quality'
CIGARETTES

10 for 6d.

20 for 1/-



After
the
Match!

Don't Forget . .
your Doggy Pal

TAKE HIM SOME

Entwistles
"MORSELS"

The Unique Dog Biscuit

Sold by Dealers everywhere
in 1/- cartons or per lb. loose

LUTON TOWN.

Colours—White Jerseys, Black Knickers

RIGHT

LEFT



WATFORD.

Colours—Blue and White.

ELLIMAN'S

Embrocation
PUTS LIFE IN LIMBS!



RUB IT IN

For **SPRAINS** **BRUISES** and
STRAINS **STIFFNESS**

At all Chemists, 2/- & 4/- per bottle

A Booklet on Massage and Hygiene of the
Athlete, Free on Application, from
ELLIMAN, SONS & Co., Ltd., SLOUGH

A GOOD GOAL!

JANES BROS., Ltd.

For your next

Sewing Machine

38, HIGH TOWN ROAD, LUTON

WE SUPPLY ON

EASY TERMS

Cycles.
Wireless Sets.
Loud Speakers.

Furniture.
Sewing Machines.
Mangles, etc., etc.

FROM

1/- down and 5/- per week

Let us know your requirements

BOULTER & CO., 48 CASTLE ST., LUTON

Have your **CAMERA FILMS**
DEVELOPED and PRINTED at

COCKER'S

The Photographic Chemist.

He will try and get a good negative from every snapshot

169, DUNSTABLE RD., LUTON
Corner of Kenilworth Road.

PICTUREDROME

PARK ST

TO-NIGHT

VICTOR McLAGLEN

Belle Bennett & Ted McNamara

in the Stupendous Fox Production,

MOTHER MACREE

Greater even than the World-famous
Song.

MONDAY NEXT

Breed of the Sea

with

RALPH INCE.

The Greatest Sea Drama ever filmed.

WELLINGTON

CINEMA

TO-NIGHT

A Stupendous Attraction

SPUDS

Featuring **LARRY SEMON**

MONDAY NEXT

A Great Super Production,

The LADYBIRD

Featuring **BETTY COMPSON** and
MALCOLM MCGREGOR,

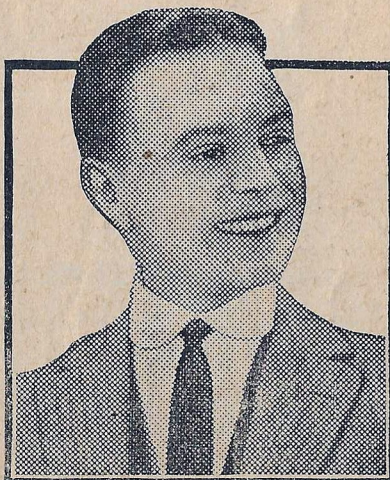
Also **HENRY AINLEY** in

THE CURSE OF RAVENSCROFT

FILM



Clare Windsor



Douglas Maclean

STARS.



James Kirkwood



Ethel Clayton

GORDON STREET

County Electric Pavilion
THE HOME OF IDEAL COMEDIES

TO-NIGHT

BEN LYON and **AILEEN PRINGLE**

in

The Great Deception

Love and War—Devotion and Daring
in vivid drama.

MONDAY NEXT

JIM THE CRACKSMAN

The humorous escapades of a man
who impersonates a famous Cracks-
man and finds himself arrested
as such.

EMPIRE CINEMA

BURY PARK ROAD

MONDAY, TUESDAY, WEDNESDAY

Florence Vidor in

AFRAID TO LOVE

with **CLIVE BROOK**, **JOCELYN LEE**,
and **NORMAN TREVOR.**

THURSDAY, FRIDAY & SATURDAY

Esther Ralston in

Fashions for Women

with **RAYMOND HATTON** and
ENAR HANSON.

HALF-TIME SCORES.

LIST No. 2.

CLUBS First named is home team	Score	CLUBS First named is home team	Score
A Hull v. Leeds		G West Bromwich v. Chelsea	
B Manchester C. v. Notts F.		H Exeter v. Brighton	
C Notts County v. Oldham		K Millwall v. Brentford	
D Preston N. E. v. S. Shields		L Bradford v. Tranmere Rovers	
E Stoke v. Reading		M Lincoln v. Halifax	
F Swansea v. Port Vale		N Rotherham v. Doncaster	

NOTE—The letter in the Programme corresponds with the letter on the Board—thus **A 0-1** means that the first-named Club has scored **0** and their opponents **1**.

L-N-E-R

FOOTBALL MATCHES

CHEAP TICKETS to LUTON

FROM			
HITCHIN	-	A 2/9	B 3/3
STEVENAGE	-	A 2/5	B 2/10
KNEBWORTH	-	A 1/11	B 2/5
WELWYN NORTH	-	A 1/6	B 2/-
HERTFORD NORTH	-	2/2	
HERTFORDBURY	-	2/-	
COLE GREEN	-	1/10	
HATFIELD	-		1/4
WELWYN GARDEN CITY	-		1/4
AYOT	-		1/4
WHEATHAMPSTEAD	-		1/-
HARPENDEN	-		-/9
LUTON HOO	-		-/5
DUNSTABLE (Town.)	-		-/6

A Via Welwyn Garden City. B Via Hatfield

By any train between 9.0 a.m. and 3 p.m.

CHEAP FIRST CLASS TICKETS WILL ALSO BE ISSUED.

In connection with Evening Matches the outward halves of tickets will be available between the hours of 9 a.m. and 5 p.m.

Return same day by any train after 3-0 p.m.

Cheap tickets will also be issued on Easter Monday.

LUCAS

C. A. V.

ROTAX

Large
Stocks
held.

**BATTERY
SERVICE**

Official Battery

Agents for Luton

.. and District ..

The
Trade
Supplied.

:: :: All makes of Accumulators charged and repaired :: ::
We carry an extensive stock of Electrical and Wireless Accessories

BOROUGH ENGINEERING WORKS, Ltd.

45, CASTLE STREET,

LUTON

Phone 646

Charnley
and Sons

Qualified
Ophthalmic Opticians

SIGHT-TESTING SPECTACLES

EYE-GLASSES

REPAIRS

15, Wellington Street,

LUTON

THE HOUSE FOR RINGS.



Diamond Rings.

Beautiful stone
securely set in 18 c
gold and platinum

£1 10 to £50



Signet Rings.

9 ct. and 18 ct. gold
in a vast range of
the latest design

3/6 to £4



Wedding Rings.

9 ct. and 22 ct. gold,
15 sizes in 20 prices,
including latest
"Court" Shapes.

4/6 to £4 10

F. HINDS, Ltd.

The London Jewellers,

5, Park Square, LUTON.

Branches in London and Provinces.

Established 1856.



and your Goal for
all Sports Goods is

NEW HUDSON Sports Depot

Where Satisfaction is Assured

Footballs
Jerseys
Knickers
Shinguards

Every requisite
at lowest prices

Send for our
Winter Sports
List to-day. It
is Free



Hose
Boots
Goal Nets
Kit Bags

Special Terms
to Clubs

IMPROVED "T"
BALL 22/6
as supplied by
us to Luton
Town F.C.

H. G. PARTRIDGE & Co.

10-12 CHAPEL STREET, LUTON.

PHONE 234.