

Monday, August 29th, 1927

TRUE - FORM



FOOTWEAR

The Best Value
IN THE TOWN

BUY FROM THE ACTUAL MAKERS

LOCAL BRANCH:

44, GEORGE STREET.

HEAD OFFICE AND FACTORIES, NORTHAMPTON.

COMMENTS ON THE GAME AND PLAYERS

We were decidedly unfortunate in our first venture at Southend, and the 2,000 followers who encouraged our boys realised that by a stroke of misfortune we were deprived of at least one point. To-night we hope to do better. Norwich City made a grand start by defeating the powerful Crystal Palace side by four goals to one, so we know that the task is not an easy one, and that our lads will have to go all out if they are to maintain their long record at home. Within a fortnight it is two years since we lost at Luton, but last

season the "Canaries" shared four goals here, and they will be encouraged by their success on Saturday to go one better.

They have some very good men in their team. With the exception of Pembleton their whole defence is composed of last season's players, but the forward line is entirely new. Pembleton has been with Millwall several seasons, as also has Moule; Porter was with Reading last season, Varco with the Rangers, Robinson with Northampton, and Slicer with Huddersfield Town. It is not

Buy Your Furniture Locally

FACTS

For 30 years we have given the public reliable goods at lowest prices. Our reputation for fair dealing is undeniable, our stock equals any shown elsewhere, we are actual manufacturers, therefore save you 5/- in each £. Every advantage offered by London firms is given you, so why not deal with us? Thousands of satisfied customers is your safest guarantee.

Our Simple System

First choose the Furniture you require, suggest terms suiting your individual income, and no reasonable proposition will be refused. Goods are then positively delivered in 24 hours. No references whatever are required, and our Manager's advice, experience, and personal attention is always at your service.

*Payments Suspended during
Sickness, Unemployment
or Adversity*

Luton Furnishing Co
A HOUSEHOLD NAME FOR HOUSEHOLD FURNITURE
22 BUTE ST & 2-4 WALLER ST LUTON

THE LARGEST CREDIT FURNISHERS

COMMENTS, Etc. (Continued).

improbable that the "Canaries" first clash without mishap, and we will turn out to be one of the most could hope they will go through improved teams in the competition. the whole season in that way.

If Galloway is declared fit there will be no alteration in our side from that on duty at Southend. He pulled a muscle slightly, and that gave him trouble, but if Trainer Pakes has got him round he will lead the attack to-night. All the others came through the

Rings! Rings!! Rings!!!

The "Pictorial" photographer will be present at the match to-night. Look out for him. 5/- Rings will appear in to-morrow's "Pictorial." You may be the lucky one.

*Make it
a habit to use Genoxide*

The Perfect Peroxide of Hydrogen

For the Mouth, Teeth, and Throat, Genoxide prevents pyorrhoea. A powerful First Aid for Cuts, Wounds, Ulcers, Abrasions and Insect Bites, "Genoxide" sterilizes—and prevents blood poisoning.

At all Chemists in Three Sizes.

4 ozs. 1/-

8 ozs. 1/6

16 ozs. 2/6

GENOXIDE Bath Powder

(Oxygenated and Perfumed).

Full of healthful benefits. Universally recommended for Rheumatism, Sciatica and Lumbago. Use "Genoxide" Bath Powder and leave your aches and pains in the bath. It is also the best means for removing corns.

8 ozs. Packet 1/-

16 ozs. Packet 1/9

GENOXIDE Ltd. LUTON

LUTON TOWN F.C.—1st XI. FIXTURES.

Date.	Opponents.	Ground.	F A	Date.	Opponents.	Ground.	F A
1927.				1928.			
Aug. 27	Southend United	A.	0 1	Jan. 7	Brighton and Hove	A.	
" 29	Norwich City	H.		" 14	Plymouth Argyle	A.	
Sept. 3	Brighton & Hove A.	H.		" 21	Bournemouth	H.	
" 5	Norwich City	A.		" 28	Brentford	A.	
" 10	Bournemouth	A.		Feb. 4	Watford	H.	
" 17	Brentford	H.		" 11	Millwall	H.	
" 24	Watford	A.		" 18	Crystal Palace	A.	
Oct. 1	Millwall	A.		" 25	Exeter City	H.	
" 8	Crystal Palace	H.		Mar. 3	Newport County	A.	
" 15	Exeter City	A.		" 10	Swindon Town	H.	
" 22	Newport County	H.		" 17	Q.P. Rangers	A.	
" 29	Swindon Town	A.		" 24	Coventry City	H.	
Nov. 5	Q.P. Rangers	H.		" 31	Gillingham	A.	
" 12	Coventry City	A.		April 6	Torquay United	H.	
" 19	Gillingham	H.		" 7	Plymouth Argyle	H.	
" 26	F.A. Cup			" 9	Torquay United	A.	
Dec. 3	Merthyr Town	H.		" 14	Merthyr Town	A.	
" 10	Walsall	A.		" 21	Walsall	H.	
" 17	Bristol Rovers	H.		" 28	Bristol Rovers	A.	
" 24	Charlton	A.		May 5	Charlton	H.	
" 26	Northampton Town	A.					
" 27	Northampton Town	H.					
" 31	Southend United	H.					

LUTON TOWN F.C.—2nd XI. FIXTURES.

1927.	Opponents	Grd.	F A	1928.	Opponents	Grd.	F A
Aug. 27	Southend United	H.	3 0	Jan. 7	Brighton & Hove	H.	
Sept. 3	Brighton & Hove	A.		" 14	Cardiff City	H.	
" 10	Fulham	H.		" 21			
" 14	Reading	H.		" 28	Brentford	H.	
" 17	Brentford	A.		Feb. 4	Watford	A.	
" 21	Reading	A.		" 11	Millwall	A.	
" 24	Watford	H.		" 18	Crystal Palace	H.	
Oct. 1	Millwall	H.		" 25	Tottenham Hotspur	A.	
" 8	Crystal Palace	A.		Mar. 3	Leicester City	H.	
" 15	Tottenham Hotspur	H.		" 15	Chelsea	A.	
" 20	Fulham	A.		" 17	Queen's P. R.	H.	
" 22	Leicester City	A.		" 24	Coventry City	A.	
" 29	West Ham United	H.		" 31	Arsenal	H.	
Nov. 2	Southampton	A.		April 6	Swansea Town	A.	
" 5	Queen's P. R.	A.		" 9	Swansea Town	H.	
" 12	Coventry City	H.		" 10	Southampton	H.	
" 19	West Ham United	A.		" 14	Chelsea	H.	
Dec. 3	Portsmouth	A.		" 21			
" 10	Cardiff City	A.		" 28	Portsmouth	H.	
" 17	Arsenal	A.		May 5	Charlton Athletic	A.	
" 24	Charlton Athletic	H.					
" 26	Clapton Orient	H.					
" 27	Clapton Orient	A.					
" 31	Southend United	A.					

SAVE MONEY!

Tyres

Have them
re-rubbered by the
Tyre and Tube
Repair Experts

5000 miles written guarantee

Ask for Price List

Hat Bags

Why worry when
you can have them
re-vulcanized by
Expert Workmen

We Save you Pounds

Prices on Application

The Luton Tyre Re-Rubbing Co.

REAR OF FOSTER'S WINE STORES,

9D, MARKET HILL - - LUTON



The Fox Hotel



DUNSTABLE RD LUTON
CLOSE TO FOOTBALL GROUND
PHONE 822

J.W.GREEN'S
FINE
ALES
AND
STOUTS



FRED MARTIN WILL BE PLEASED TO MEET OLD & NEW FRIENDS

J. W. GREEN'S

NOTED
LUTON ALES and STOUT
IN CASK AND BOTTLE

Prize Medal and Diploma awarded
Brewers' Exhibition, London, 1926

LUTON'S

LEADING



DRAPERS & FURNISHERS

SMOKE

SUNRIPE

The 'Quality'
CIGARETTES

10 for 6d.

20 for 1/-

LUTON TOWN.

Colours—White Jerseys, Black Knickers

RIGHT

LEFT

	1 Abbott	
2 Richards		3 Till
4 Black	5 Rennie	6 Millar
7 Pointon	8 Reid	10 Woods
	9 Galloway	11 Dennis
	<p>Referee: Mr. H. E. GRAY, Forest Gate.</p>	
	<p>Linesmen: Messrs. L. E. GIBBS, Reading. A. J. JEWELL, London.</p>	
12 Slicer	13 Moule	14 Varco
	15 Robinson	16 Porter
17 McGree	18 Richmond	19 Pemberton
20 Campbell		21 Hannah
	22 Dennington	

LEFT

RIGHT

NORWICH CITY.

ELLIMAN'S

Embrocation
PUTS LIFE IN LIMBS!



RUB IT IN

For **SPRAINS** **BRUISES and**
STRAINS **STIFFNESS**

At all Chemists, 2/- & 4/- per bottle

A Booklet on Massage and Hygiene of the
Athlete, Free on Application, from
ELLIMAN, SONS & Co., Ltd., SLOUGH



After
the
Match!

Don't Forget . .
your Doggy Pal

TAKE HIM SOME

Entwistles
"MORSELS"
The Unique Dog Biscuit

Sold by Dealers everywhere
in 1/- cartons or per lb. loose

Repairs to Sewing Machines

Executed at the shortest
notice, of **ALL MODELS**.
The largest stock of spares
:: held in the District. ::

JANES BROS., Ltd., LUTON

WE SUPPLY ON

EASY TERMS

Cycles.
Wireless Sets.
Loud Speakers.

Furniture.
Sewing Machines.
Mangles, etc., etc.

FROM

1/- down and 5/- per week

Let us know your requirements.

BOULTER & CO., 48 CASTLE ST.,
LUTON

Have your **CAMERA FILMS**
DEVELOPED and PRINTED at

COCKER'S

The Photographic Chemist.

He will try and get a good negative from every snapshot

169, DUNSTABLE RD., Corner of
Kenilworth Road, LUTON

PICTUREDROME

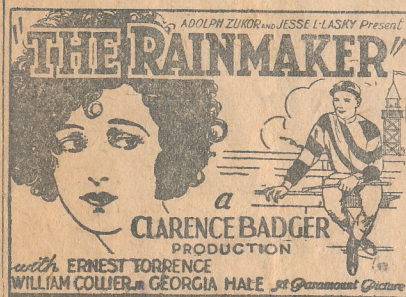
PARK ST

TO-NIGHT
DOUBLE FEATURE PROGRAMME

BOB CUSTER in

Beyond the Rockies

and



WELLINGTON CINEMA

TO-NIGHT

Tuesday and Wednesday

Enormous Attraction.

KIKI

Starring

Norma Talmadge
and Ronald Colman

"Kiki," the story of a girl
who stopped at nothing.

ENTERTAINMENTS

PICTUREDROME.
"THE RAINMAKER."

A poignant, human drama, graphically developed, convincingly portrayed, and intelligently directed — "The Rainmaker," a new Paramount picture—will be shown To-night. Romance and regeneration are the two interlocking elements in this gripping story. The action revolves around a broken-down jockey and a dance hall girl, whose love for each other eventually triumphs over overwhelming trials and tribulations.

WELLINGTON.
"KIKI."

Historic theatrical photographs of priceless value to the owners were used in making some of the scenes in "Kiki." The organisation was required to post a \$3,000 bond for the safe return of the relics to their owners. Opening scenes in the cinema version are laid in a Paris theatrical manager's office, on the walls of which are hung old framed photographs of famous actors and actresses. The street gamin of Paris, played on the "stage" by Lenore Ulric, is a bewitching little person with no respect for either reputations or conventions. But she has ambition, and this centres on becoming a famous dancer. As the result of persistent effort, she wins the confidence of a theatrical manager and eventually takes the place of a star of the company for which he is responsible. In addition to Norma Talmadge, the cast features Ronald Colman, Gertrude Astor, Marc MacDermott, George K. Arthur, and Frankie Darro, to-night.

A SMOKER'S

It is pleasant to be able to enjoy a good cigarette and at the same time bear in mind that for every ten smoked one gains a point towards securing a delightful free gift.

The "Sunripe" and "Spinnet Round" (cork tipped) Prize Gift Scheme has become immensely popular amongst cigarette smokers. Prizes include field glasses, opera glasses, rose bowls, bronzed metal ware, toys, games, books, suitcase, an "Auction Bridge" set of finest quality, a volume of Dickens' works, a Dickens plaque in plaster, an

IN LUTON

GORDON STREET.

"THE TWO BROTHERS."

Two brothers—Peter and Walter Moran—are in the employ of the powerful Raucheisen combine. Peter Moran, the factory manager, is an idealist—just and considerate to those working under him; and Walter, the younger brother, secretary to Joseph Raucheisen, clever but crafty.

Walter is dismissed for being ten minutes late, and Peter resigns his position the same day because he recognises that Raucheisen has no heart for the men whose labour has helped to pile up his fortune. Walter decides to build up his own fortune as quickly as possible in order to be able to revenge himself on Raucheisen. Peter, on the other hand, took a different view of life. His one aim was to wage war against poverty, and he henceforward decided to devote his life to the relief of suffering and distress among the poor—the workless and the homeless. Conrad Veidt plays the dual role of the brothers in this picture, to-night.

EMPIRE.
"SECOND TO NONE."

The first film to be produced with the co-operation of the Admiralty, and for which scenes were taken on board his Majesty's ships, is "Second to None," a romance of the Royal Navy founded on stories by "Bartimeus," which comes to the Empire this week. It is a British film featuring Moore Marriott, with Benita Hume and Ian Fleming, and is "second to none" in the reality of its Naval scenes ashore and afloat and in its fine patriotic story.

OPPORTUNITY

attache case, a fountain pen, a set of oak trays, and many others. The number of points varies according to the value of the gift. A complete list of prizes and full particulars can be obtained from most tobacconists, but those who find any difficulty have only to drop a postcard to Messrs. R. & J. Hill, Ltd., 175, Shoreditch, London, E.C.1.

Another point of interest is the new series of picture cards, i.e., historical places mentioned in the Dickens classics, which are now being issued with Sunripe cigarettes.

GORDON STREET

County Electric Pavilion
THE HOME OF IDEAL COMEDIES

TO-NIGHT

GREAT ATTRACTION

THE TWO BROTHERS

Featuring

CONRAD VEIDT

In a dual role

EMPIRE CINEMA

BURY PARK ROAD

ALL THIS WEEK

Matinee - Wednesday at 2.30

ENORMOUS ATTRACTION

SECOND TO NONE

Featuring

MOORE MARRIOT

And an All-Star Cast

THE TWO NEW MEN.



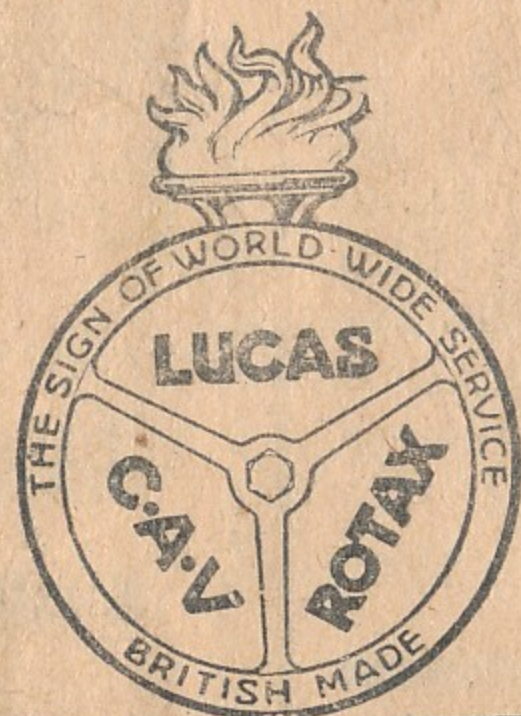
ABBOTT.



GALLOWAY.

LUCAS
C. A. V.
ROTAX

Large
Stocks
held.



**BATTERY
SERVICE**

**Official Battery
Agents for Luton
.. and District ..**

The
Trade
Supplied.

:: :: All makes of Accumulators charged and repaired :: ::
We carry an extensive stock of Electrical and Wireless Accessories

BOROUGH ENGINEERING WORKS, Ltd.
45, CASTLE STREET,
LUTON
Phone 646

—L-N-E-R— FOOTBALL MATCHES

CHEAP TICKETS to LUTON

FROM

HITCHIN	-	A 2/9	B 3/3	HATFIELD	-	1/4
STEVENAGE	-	A 2/5	B 2/10	WELWYN GARDEN CITY	-	1/4
KNEBWORTH	-	A 1/11	B 2/5	AYOT	-	1/4
WELWYN NORTH	-	A 1/6	B 2/-	WHEATHAMPSTEAD	-	1/-
HERTFORD NORTH	-	—	2/2	HARPENDEN	-	-/9
HERTINGFORDBURY	-	—	2/-	LUTON HOO	-	-/5
COLE GREEN	-	—	1/10	DUNSTABLE (Town.)	-	-/6

A Via Welwyn Garden City. B Via Hatfield

By any train between 9.0 a.m. and 3 p.m.

CHEAP FIRST CLASS TICKETS WILL ALSO BE ISSUED.

In connection with Evening Matches the outward halves of tickets will be available between the hours of 9 a.m. and 5 p.m.

Return same day by any train after 3-0 p.m.

Cheap tickets will also be issued on Boxing Day and Easter Monday.

Charnley
and Sons

Qualified
Ophthalmic Opticians

8 SIGHT-TESTING SPECTACLES
EYE-GLASSES REPAIRS

15, Wellington Street,
LUTON

THE HOUSE FOR RINGS.



Diamond Rings.
Beautiful stones
securely set in 18 ct.
gold and platinum.

£1 10 to £50



Signet Rings.
9 ct. and 18 ct. gold,
in a vast range of
the latest designs.

3/6 to £4



Wedding Rings.
9 ct. and 22 ct. gold,
15 sizes in 20 prices,
including latest
"Court" Shapes.

4/6 to £4 10

F. HINDS, Ltd.
The London Jewellers,
5, Park Square, LUTON.
Branches in London and Provinces.
Established 1856.



GOAL!

and your Goal for
all Sports Goods is

NEW HUDSON Sports Depot

Where Satisfaction is Assured

Footballs
Jerseys
Knickers
Shinguards

Every requisite
at lowest prices

Send for our
Winter Sports
List to-day. It
is Free



Hose
Boots
Goal Nets
Kit Bags

Special Terms
to Clubs

IMPROVED "T"
BALL 22/6
as supplied by
us to Luton
Town F.C.

H. G. PARTRIDGE & Co.

10-12, CHAPEL STREET, LUTON.
PHONE 234.